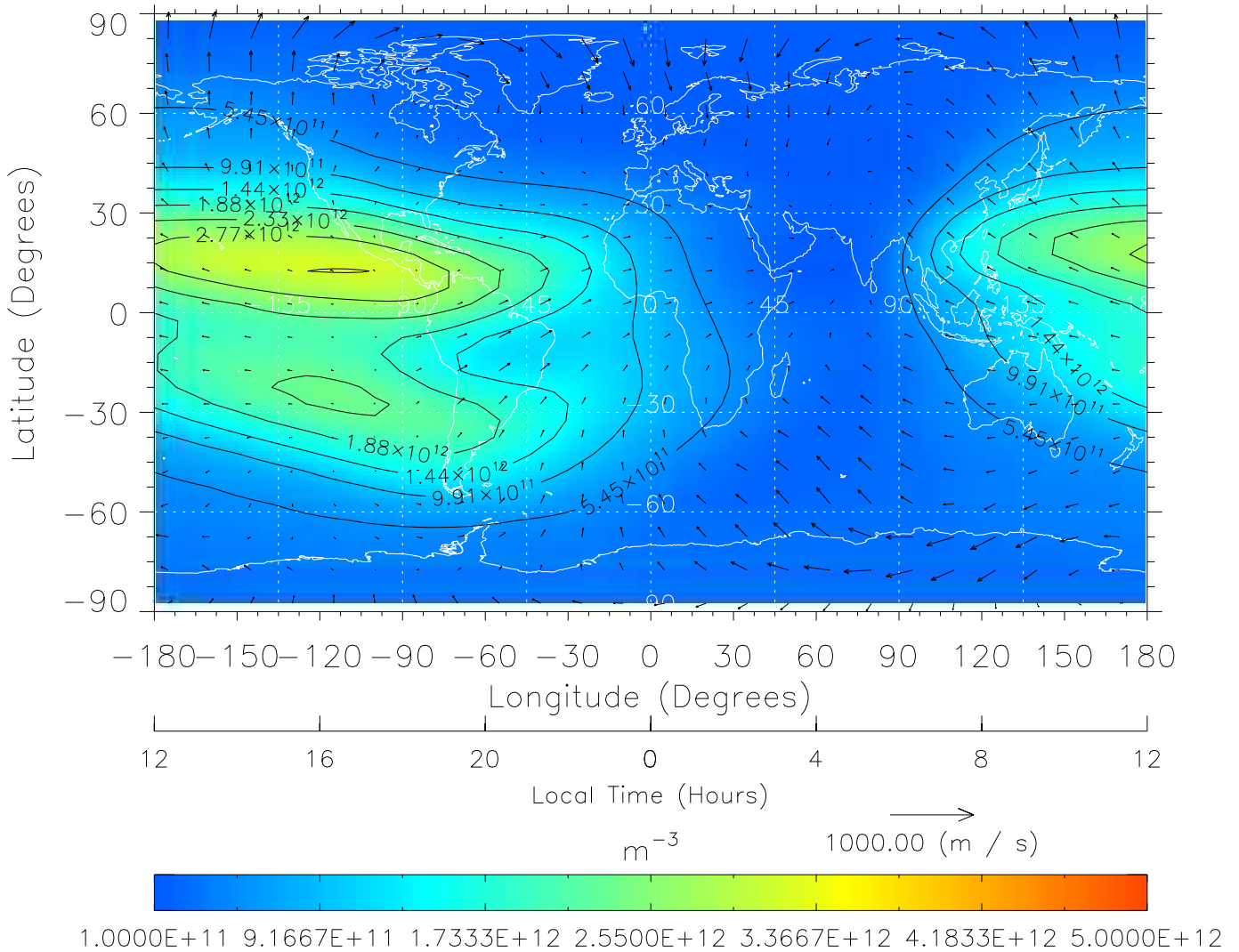


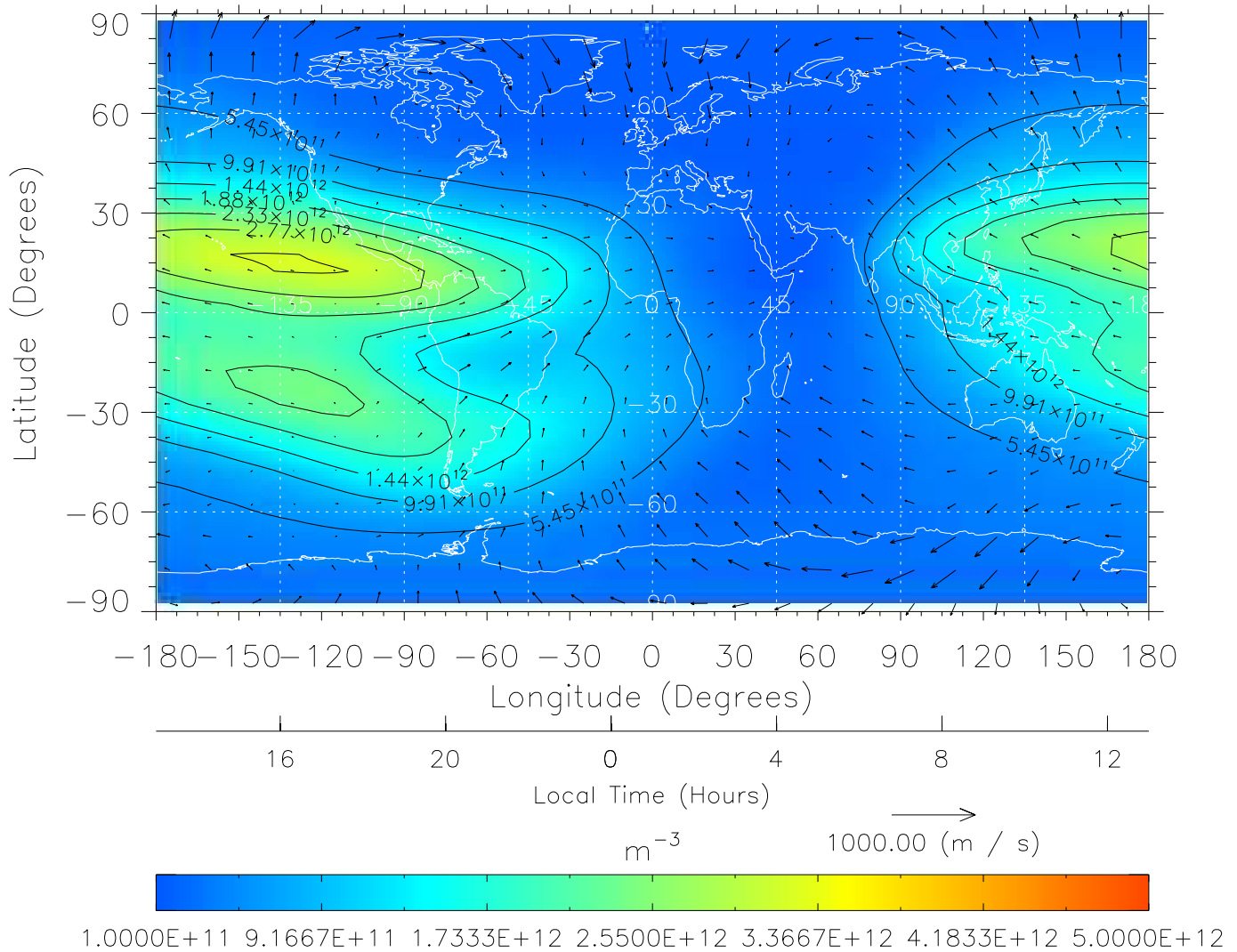
TIME-GCM MAP NmF2 with Neutral Wind vectors  
 ZP = 2.00 UT = 0.00 DOY = 324



Created: Thu Mar 10 14:26:47 2005

From: /home/tgcm/histories/secondary/OctoberNovember2003/OctoberNovember2003\_v1/324.nc

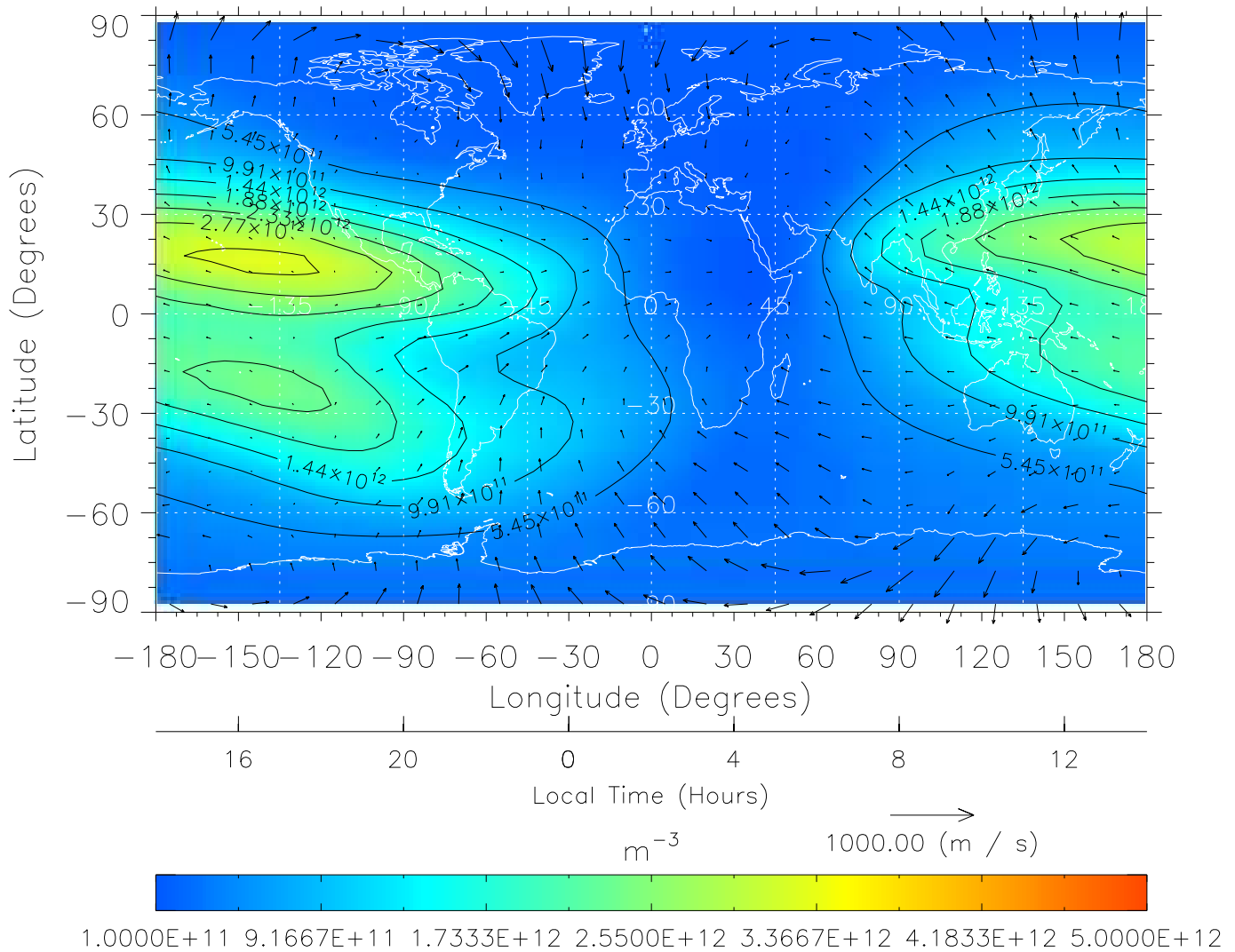
TIME-GCM MAP NmF2 with Neutral Wind vectors  
 ZP = 2.00 UT = 1.00 DOY = 324



Created: Thu Mar 10 14:26:47 2005

From: /home/tgcm/histories/secondary/OctoberNovember2003/OctoberNovember2003\_v1/324.nc

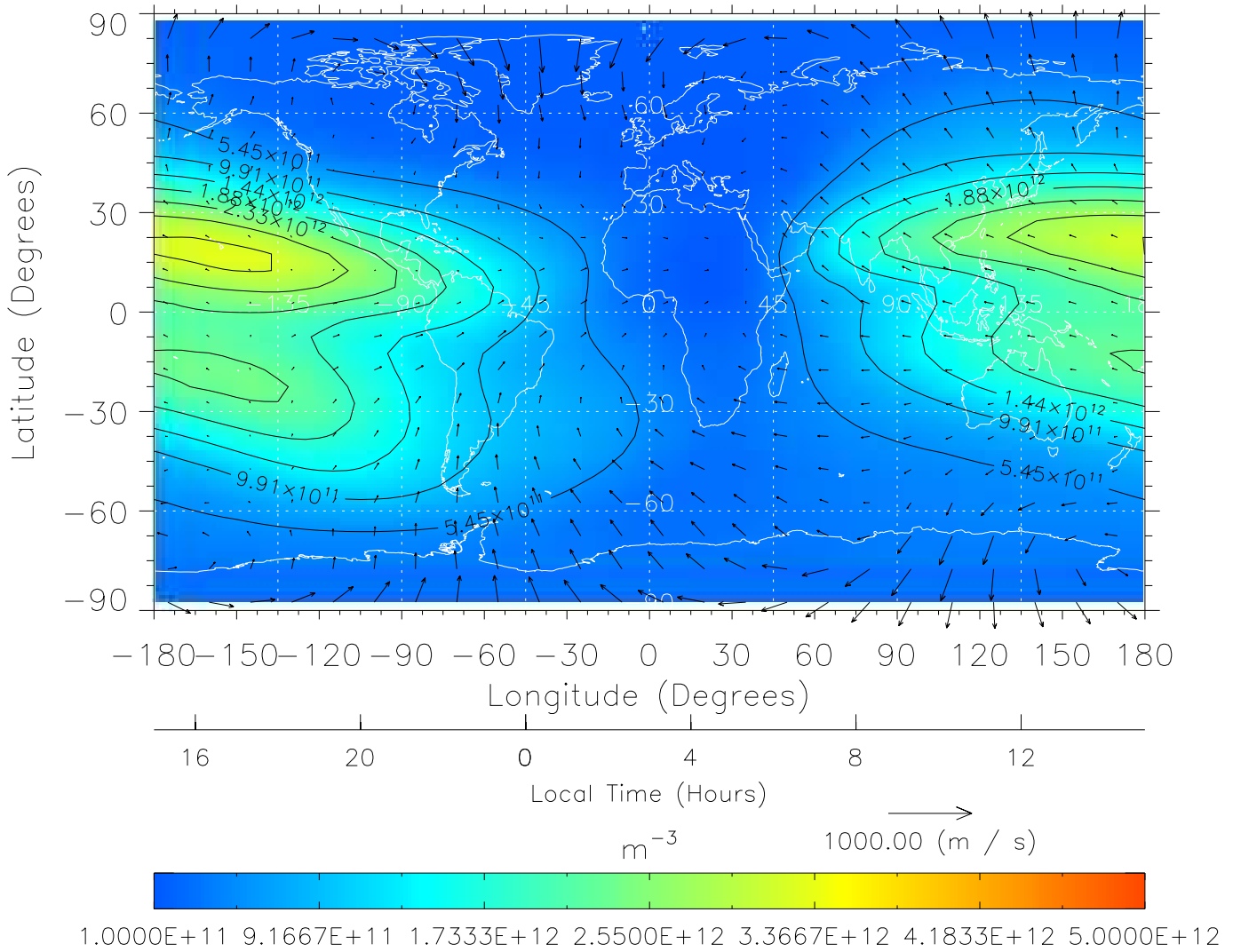
TIME-GCM MAP NmF2 with Neutral Wind vectors  
 ZP = 2.00 UT = 2.00 DOY = 324



Created: Thu Mar 10 14:26:48 2005

From: /home/tgcm/histories/secondary/OctoberNovember2003/OctoberNovember2003\_v1/324.nc

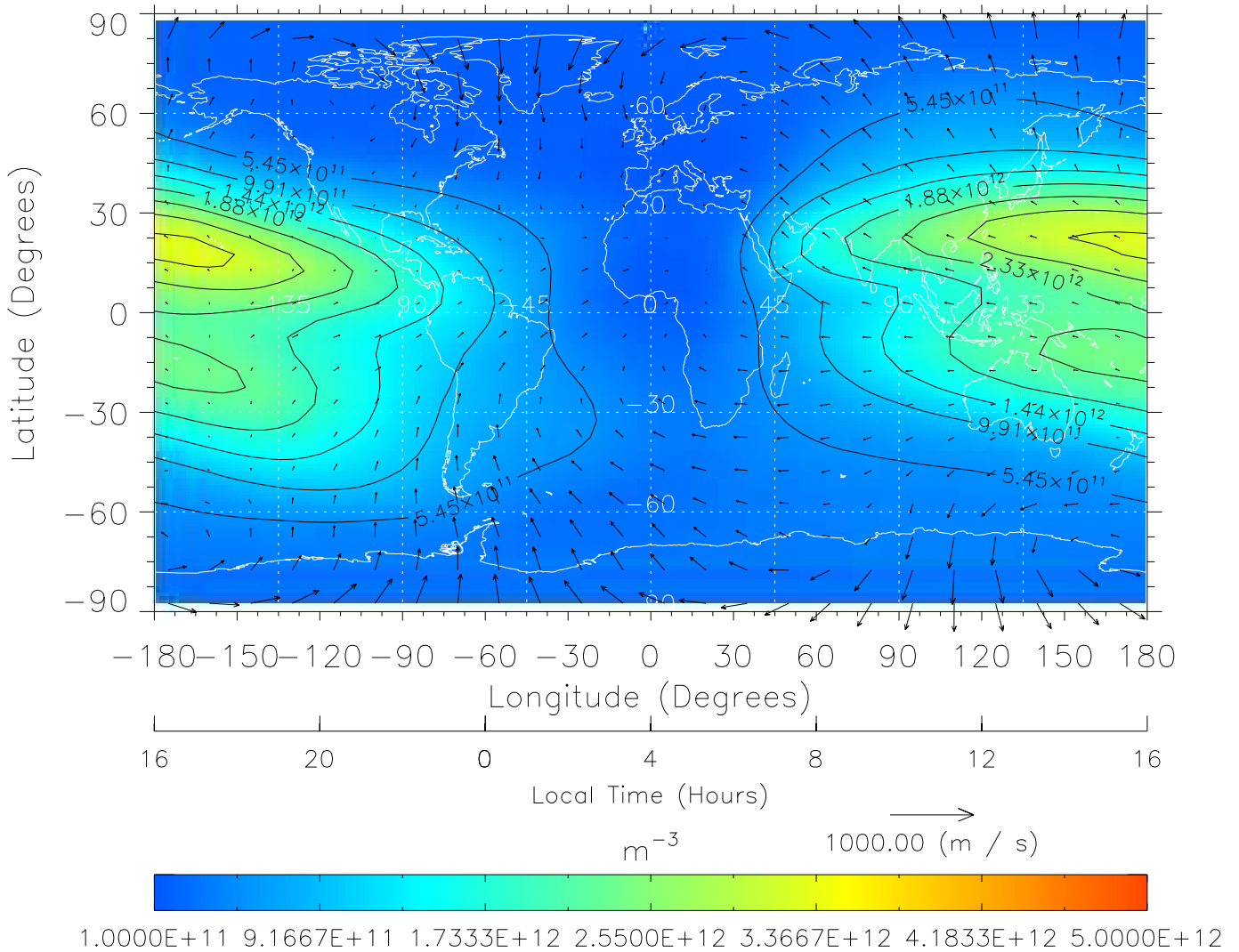
TIME-GCM MAP NmF2 with Neutral Wind vectors  
 ZP = 2.00 UT = 3.00 DOY = 324



Created: Thu Mar 10 14:26:48 2005

From: /home/tgcm/histories/secondary/OctoberNovember2003/OctoberNovember2003\_v1/324.nc

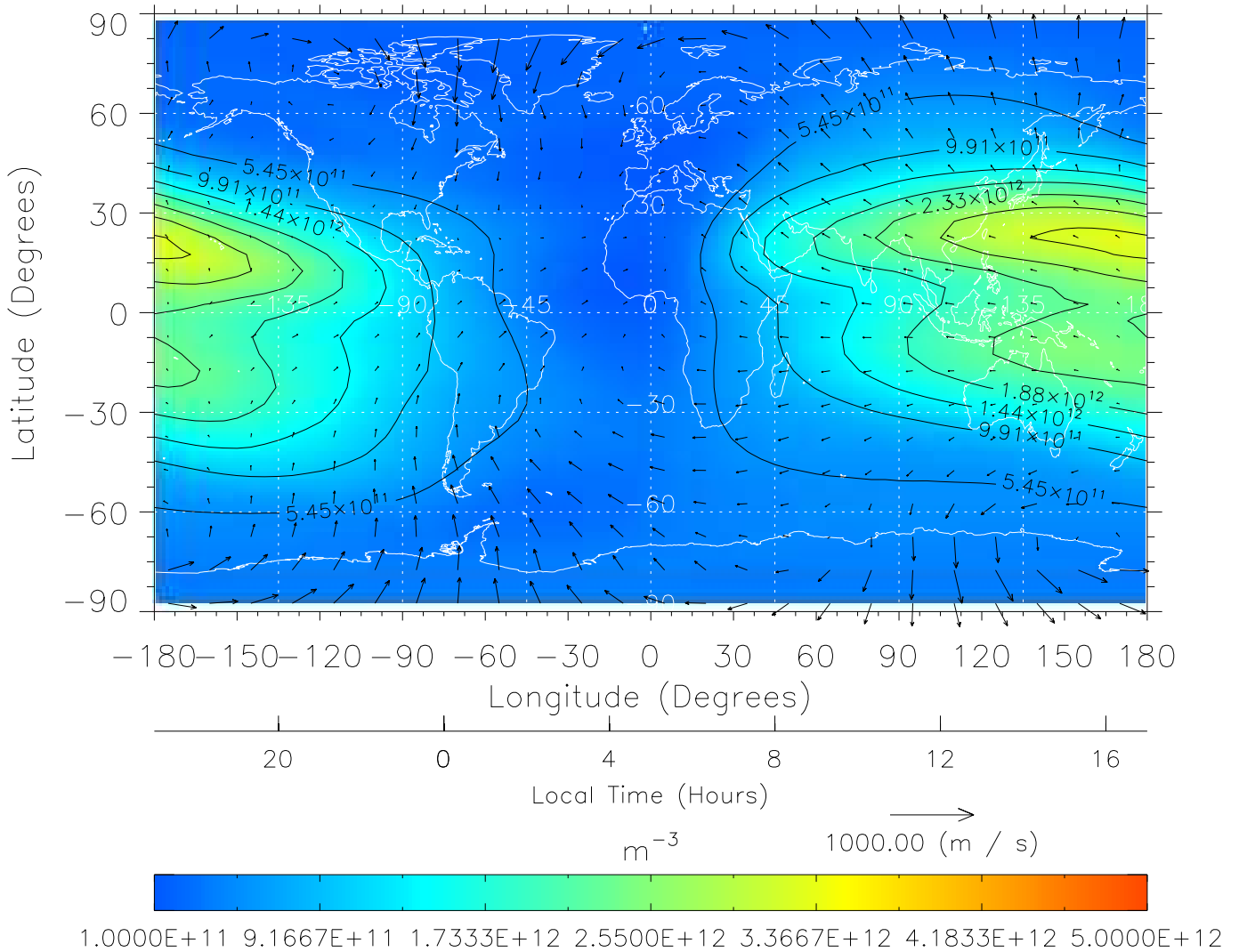
TIME-GCM MAP NmF2 with Neutral Wind vectors  
 ZP = 2.00 UT = 4.00 DOY = 324



Created: Thu Mar 10 14:26:49 2005

From: /home/tgcm/histories/secondary/OctoberNovember2003/OctoberNovember2003\_v1/324.nc

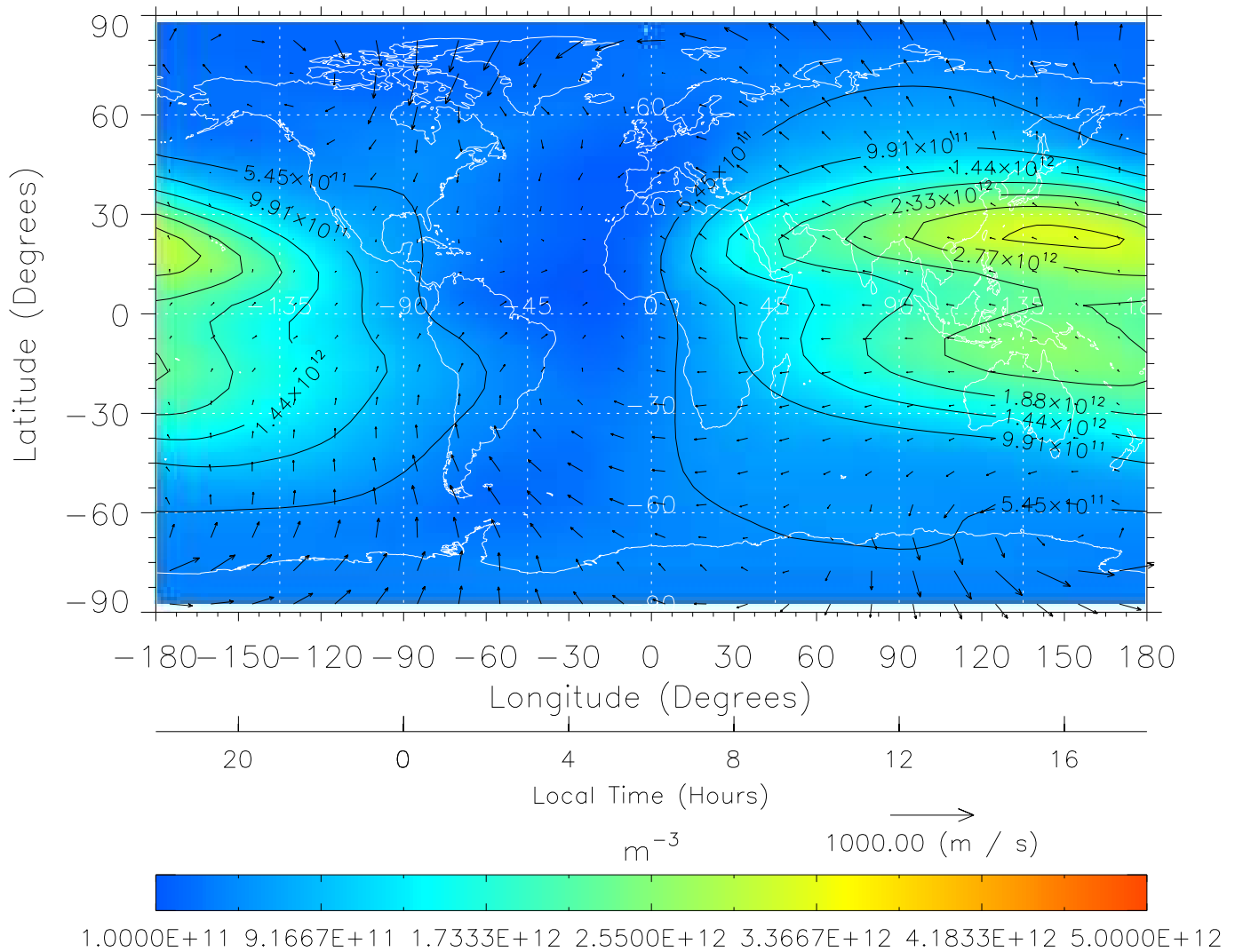
TIME-GCM MAP NmF2 with Neutral Wind vectors  
 ZP = 2.00 UT = 5.00 DOY = 324



Created: Thu Mar 10 14:26:49 2005

From: /home/tgcm/histories/secondary/OctoberNovember2003/OctoberNovember2003\_v1/324.nc

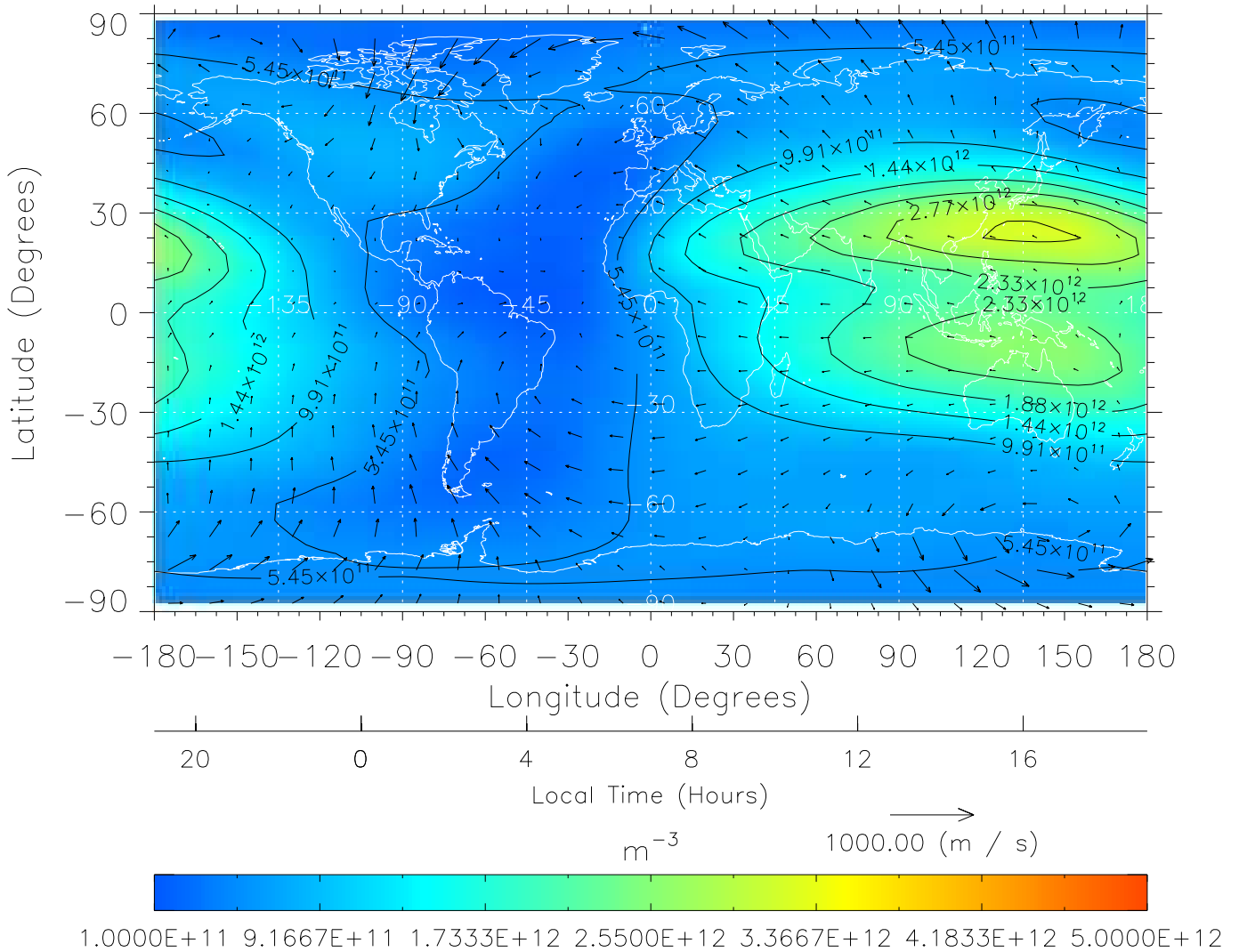
TIME-GCM MAP NmF2 with Neutral Wind vectors  
 ZP = 2.00 UT = 6.00 DOY = 324



Created: Thu Mar 10 14:26:50 2005

From: /home/tgcm/histories/secondary/OctoberNovember2003/OctoberNovember2003\_v1/324.nc

TIME-GCM MAP NmF2 with Neutral Wind vectors  
 ZP = 2.00 UT = 7.00 DOY = 324

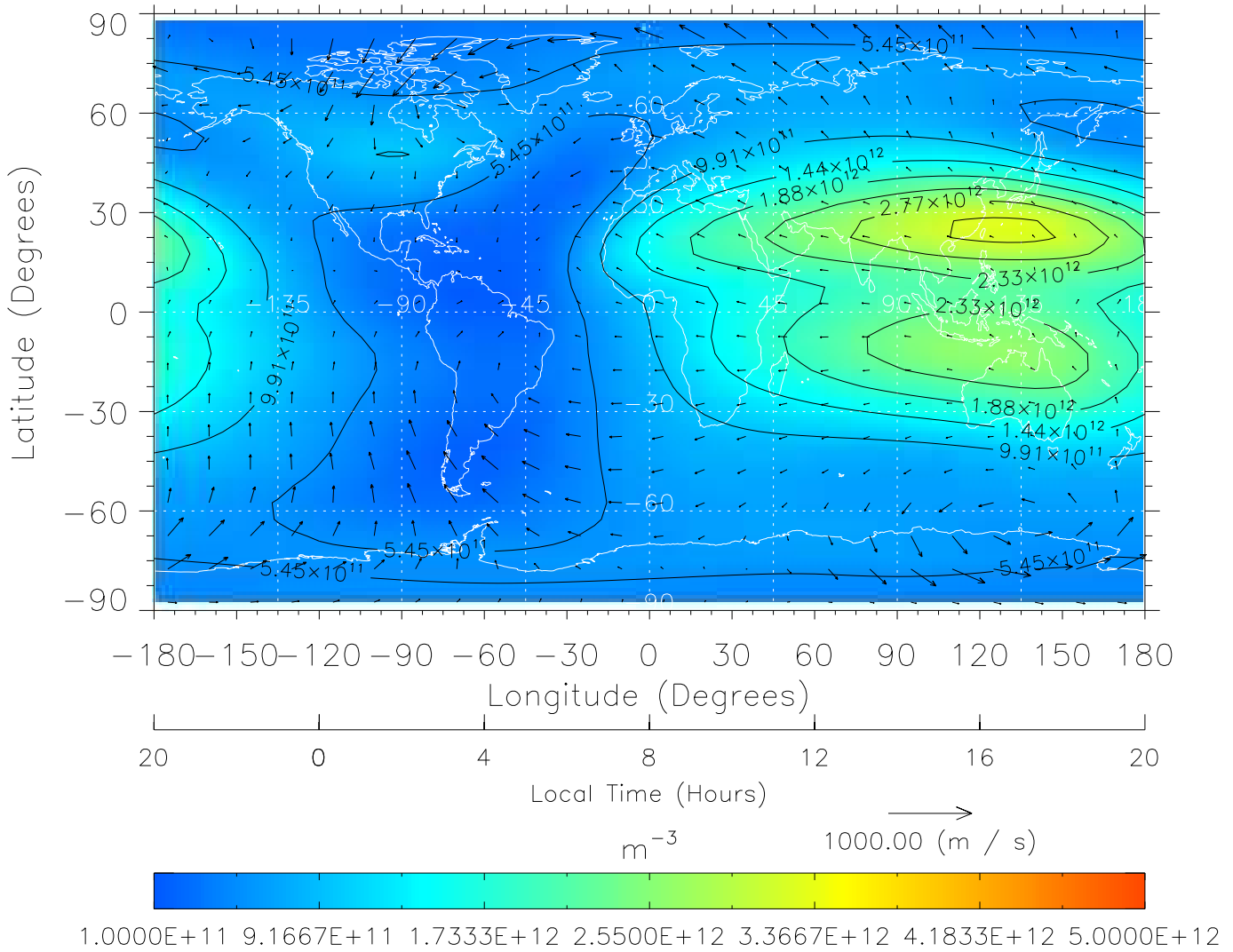


Created: Thu Mar 10 14:26:50 2005

From: /home/tgcm/histories/secondary/OctoberNovember2003/OctoberNovember2003\_v1/324.nc



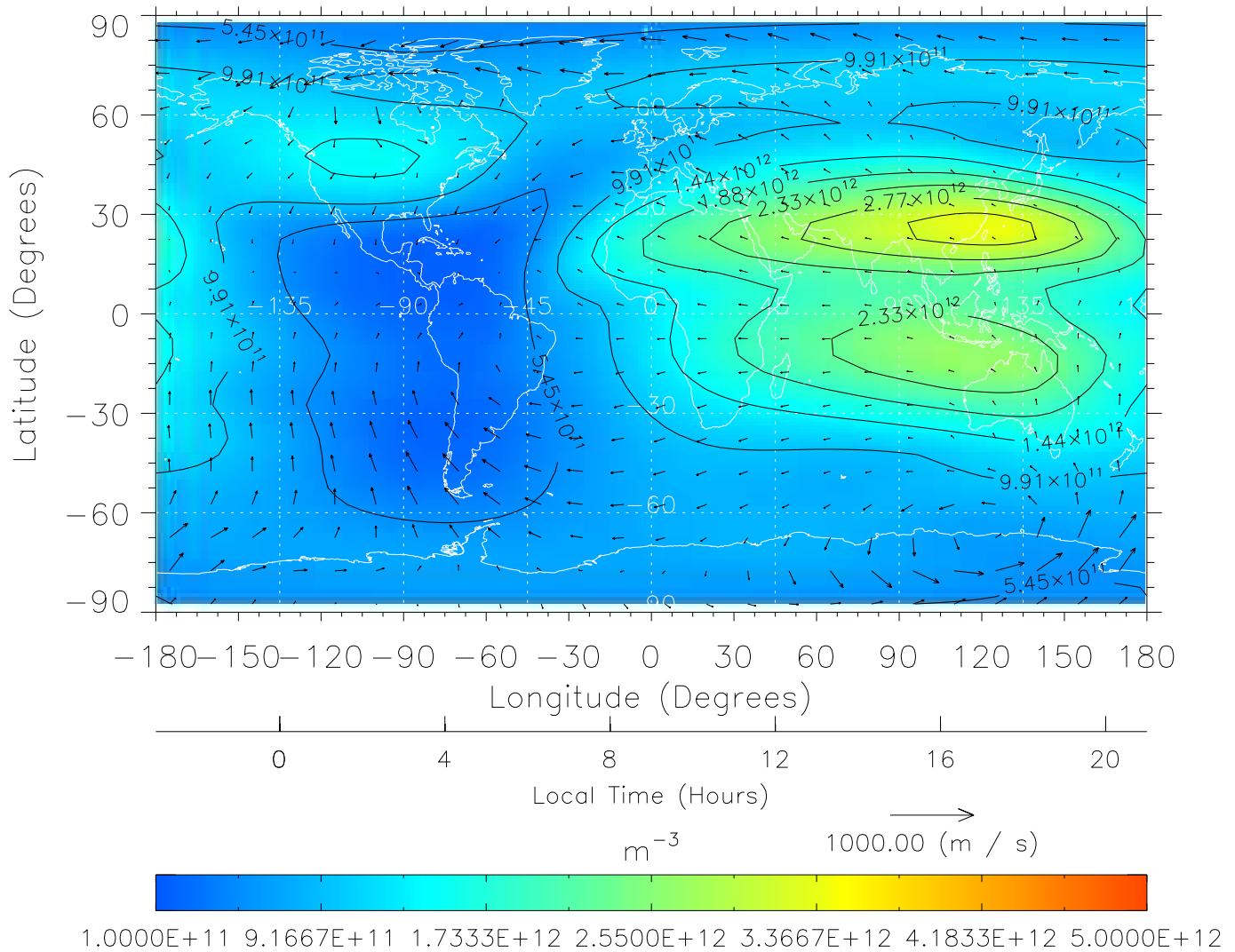
TIME-GCM MAP NmF2 with Neutral Wind vectors  
 ZP = 2.00 UT = 8.00 DOY = 324



Created: Thu Mar 10 14:26:51 2005

From: /home/tgcm/histories/secondary/OctoberNovember2003/OctoberNovember2003\_v1/324.nc

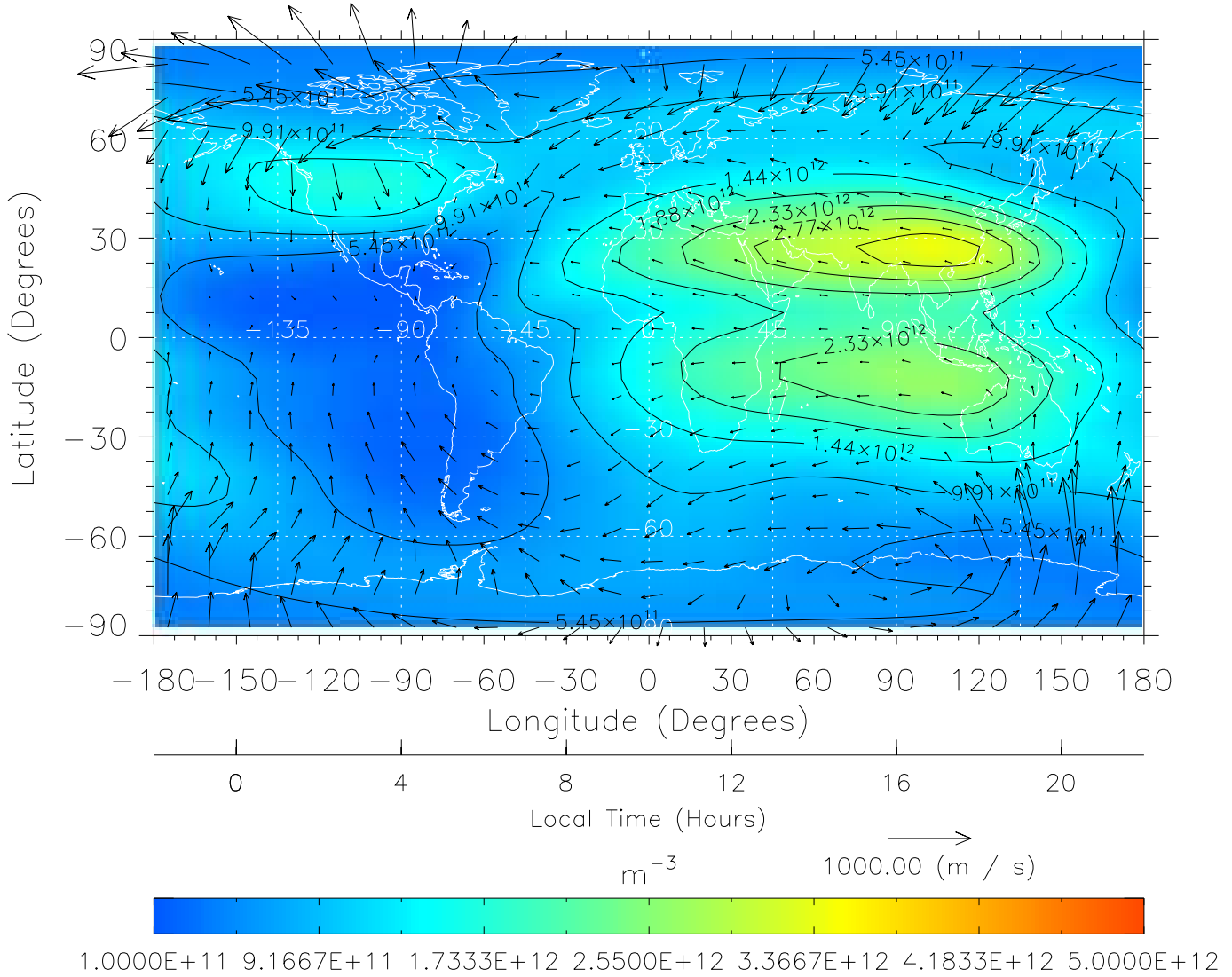
TIME-GCM MAP NmF2 with Neutral Wind vectors  
 ZP = 2.00 UT = 9.00 DOY = 324



Created: Thu Mar 10 14:26:51 2005

From: /home/tgcm/histories/secondary/OctoberNovember2003/OctoberNovember2003\_v1/324.nc

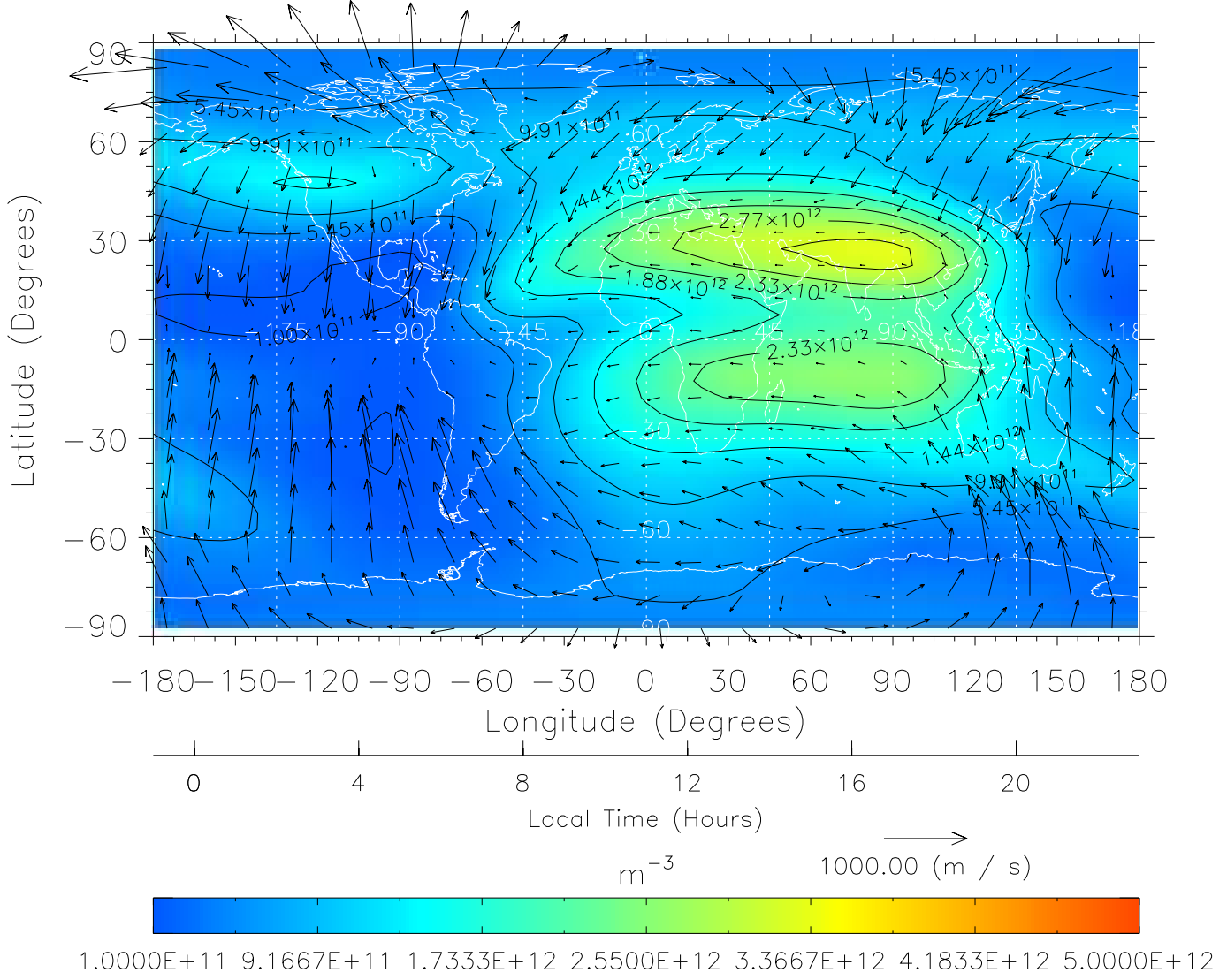
TIME-GCM MAP NmF2 with Neutral Wind vectors  
 ZP = 2.00 UT = 10.00 DOY = 324



Created: Thu Mar 10 14:26:51 2005

From: /home/tgcm/histories/secondary/OctoberNovember2003/OctoberNovember2003\_v1/324.nc

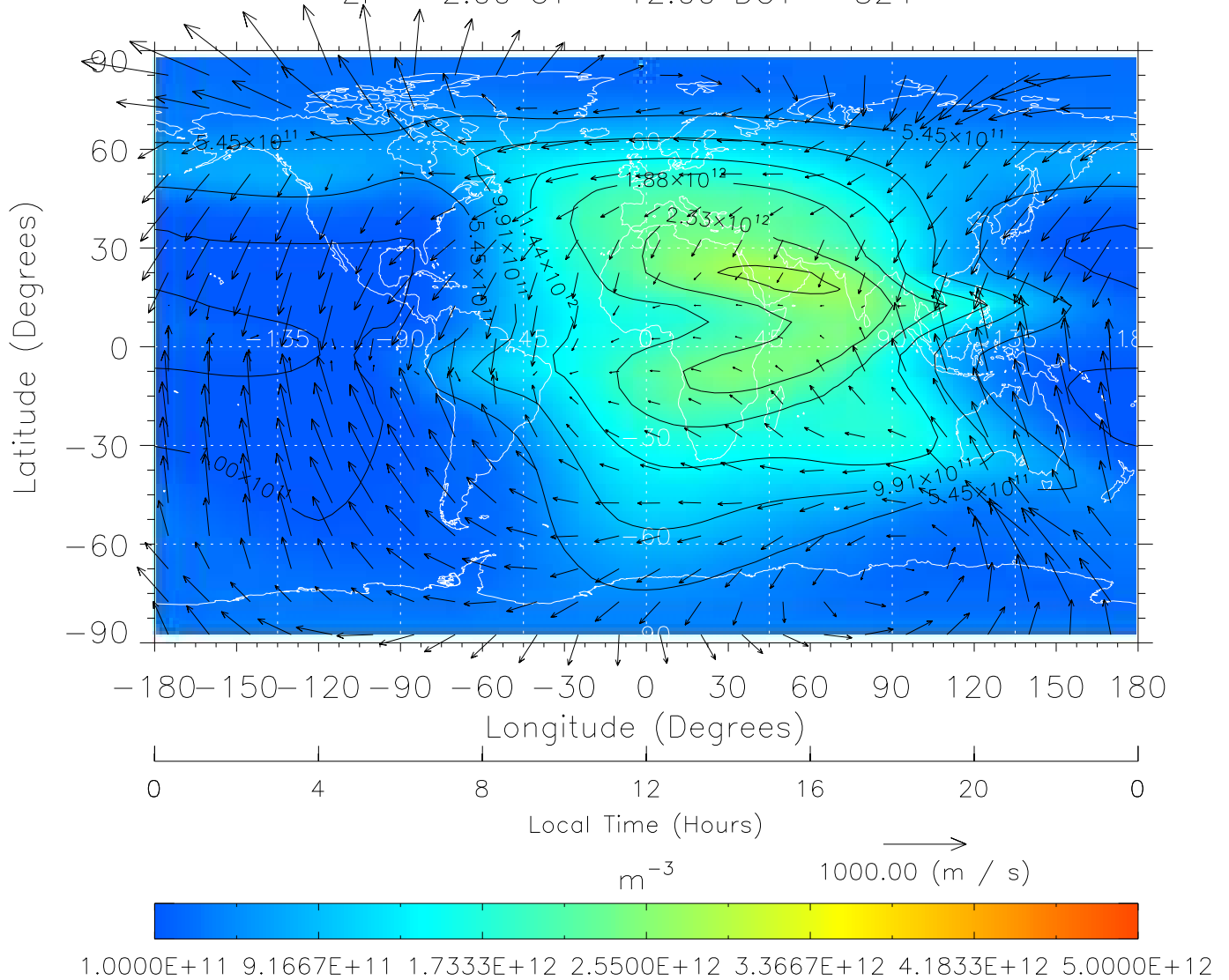
TIME-GCM MAP NmF2 with Neutral Wind vectors  
 ZP = 2.00 UT = 11.00 DOY = 324



Created: Thu Mar 10 14:26:52 2005

From: /home/tgcm/histories/secondary/OctoberNovember2003/OctoberNovember2003\_v1/324.nc

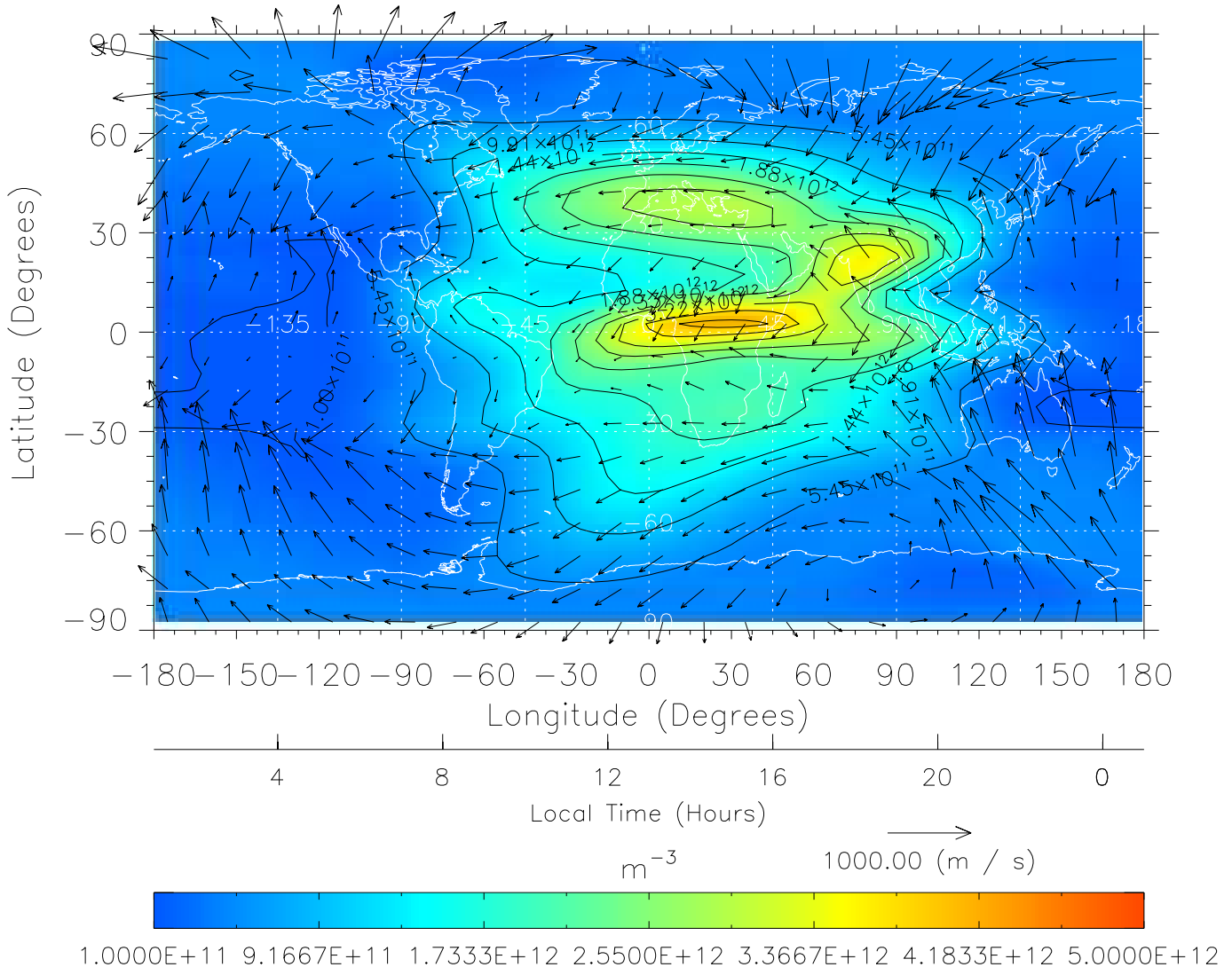
TIME-GCM MAP NmF2 with Neutral Wind vectors  
 ZP = 2.00 UT = 12.00 DOY = 324



Created: Thu Mar 10 14:26:52 2005

From: /home/tgcm/histories/secondary/OctoberNovember2003/OctoberNovember2003\_v1/324.nc

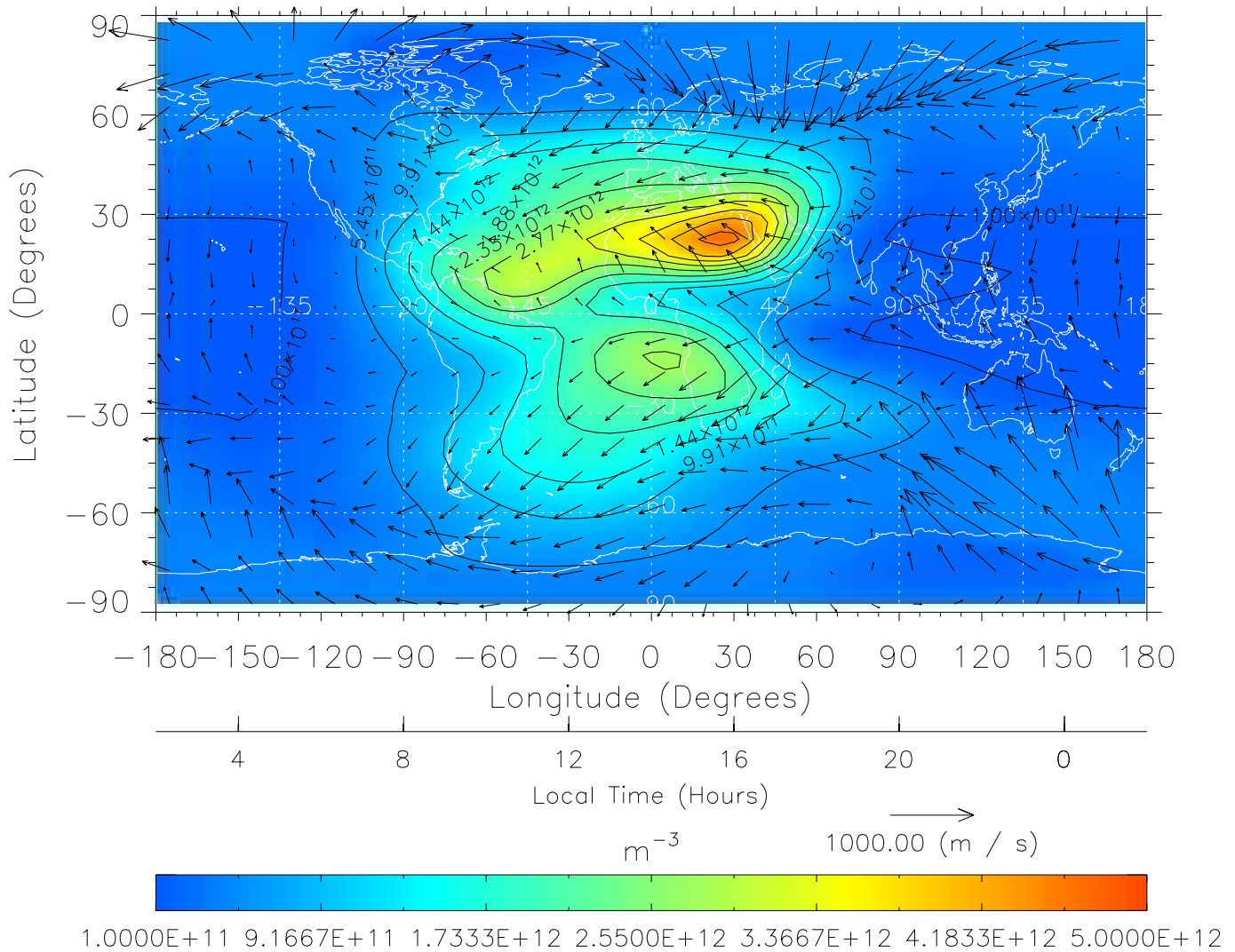
TIME-GCM MAP NmF2 with Neutral Wind vectors  
 ZP = 2.00 UT = 13.00 DOY = 324



Created: Thu Mar 10 14:26:53 2005

From: /home/tgcm/histories/secondary/OctoberNovember2003/OctoberNovember2003\_v1/324.nc

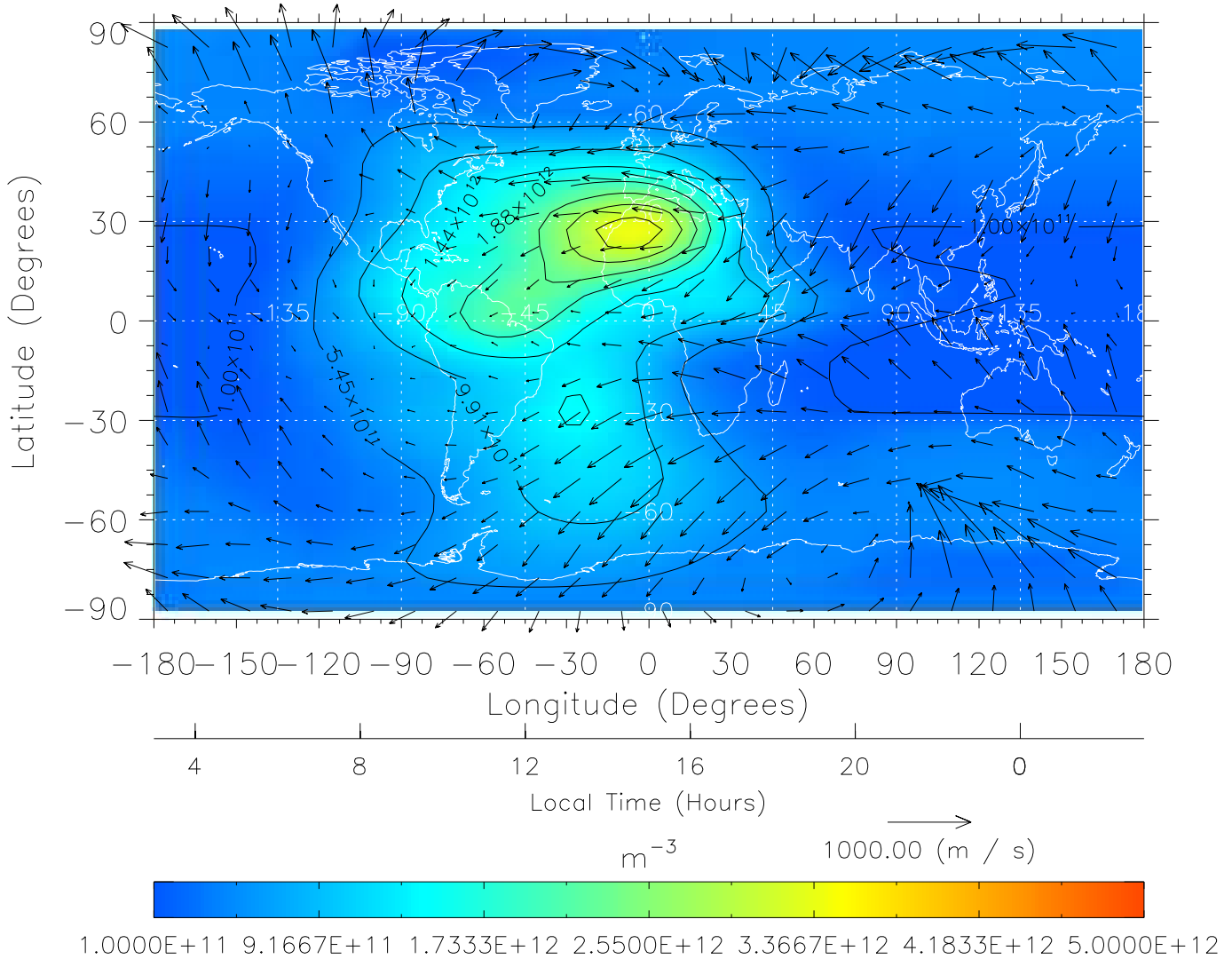
TIME-GCM MAP NmF2 with Neutral Wind vectors  
 ZP = 2.00 UT = 14.00 DOY = 324



Created: Thu Mar 10 14:26:53 2005

From: /home/tgcm/histories/secondary/OctoberNovember2003/OctoberNovember2003\_v1/324.nc

TIME-GCM MAP NmF2 with Neutral Wind vectors  
 ZP = 2.00 UT = 15.00 DOY = 324

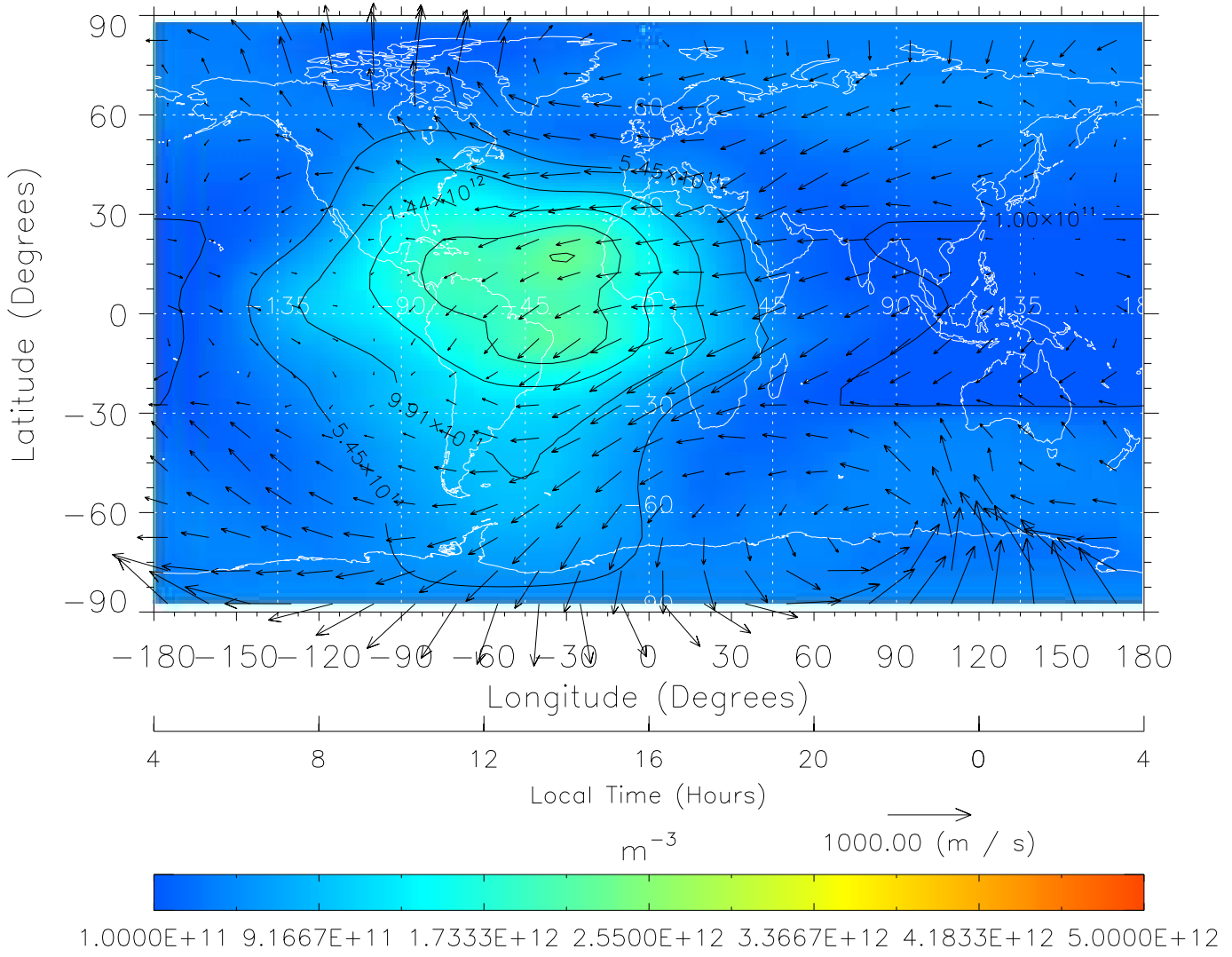


Created: Thu Mar 10 14:26:54 2005

From: /home/tgcm/histories/secondary/OctoberNovember2003/OctoberNovember2003\_v1/324.nc



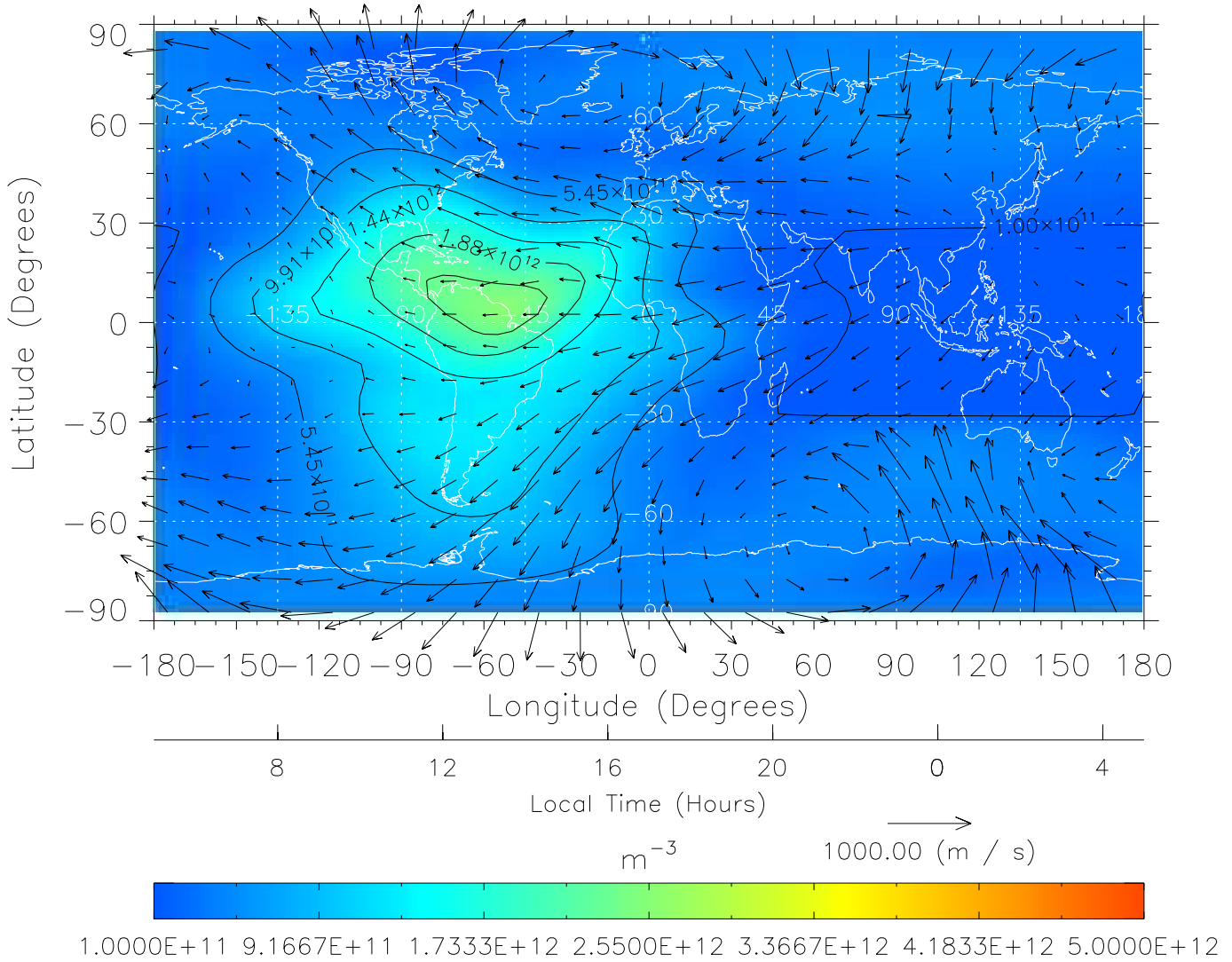
TIME-GCM MAP NmF2 with Neutral Wind vectors  
 ZP = 2.00 UT = 16.00 DOY = 324



Created: Thu Mar 10 14:26:54 2005

From: /home/tgcm/histories/secondary/OctoberNovember2003/OctoberNovember2003\_v1/324.nc

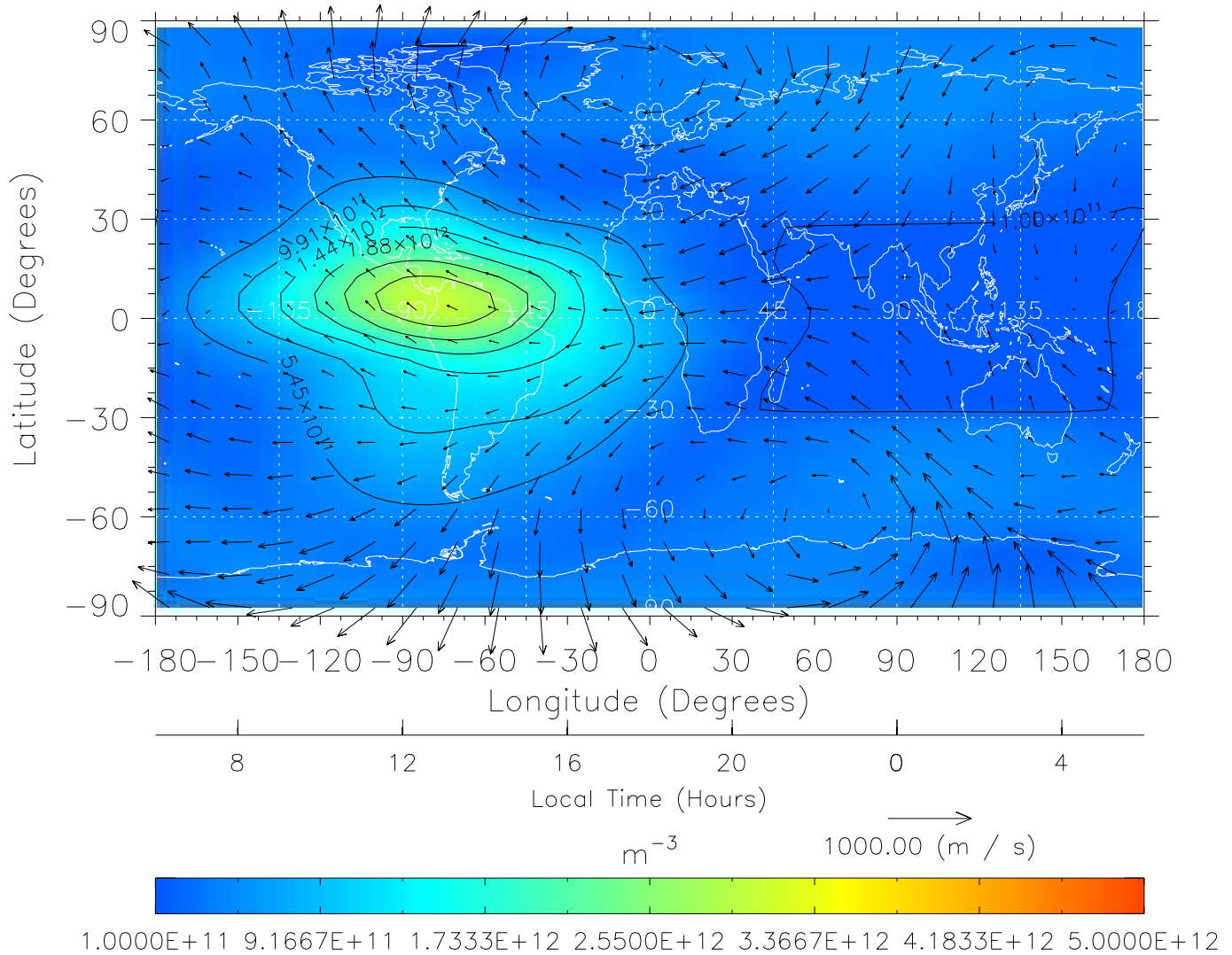
TIME-GCM MAP NmF2 with Neutral Wind vectors  
 ZP = 2.00 UT = 17.00 DOY = 324



Created: Thu Mar 10 14:26:55 2005

From: /home/tgcm/histories/secondary/OctoberNovember2003/OctoberNovember2003\_v1/324.nc

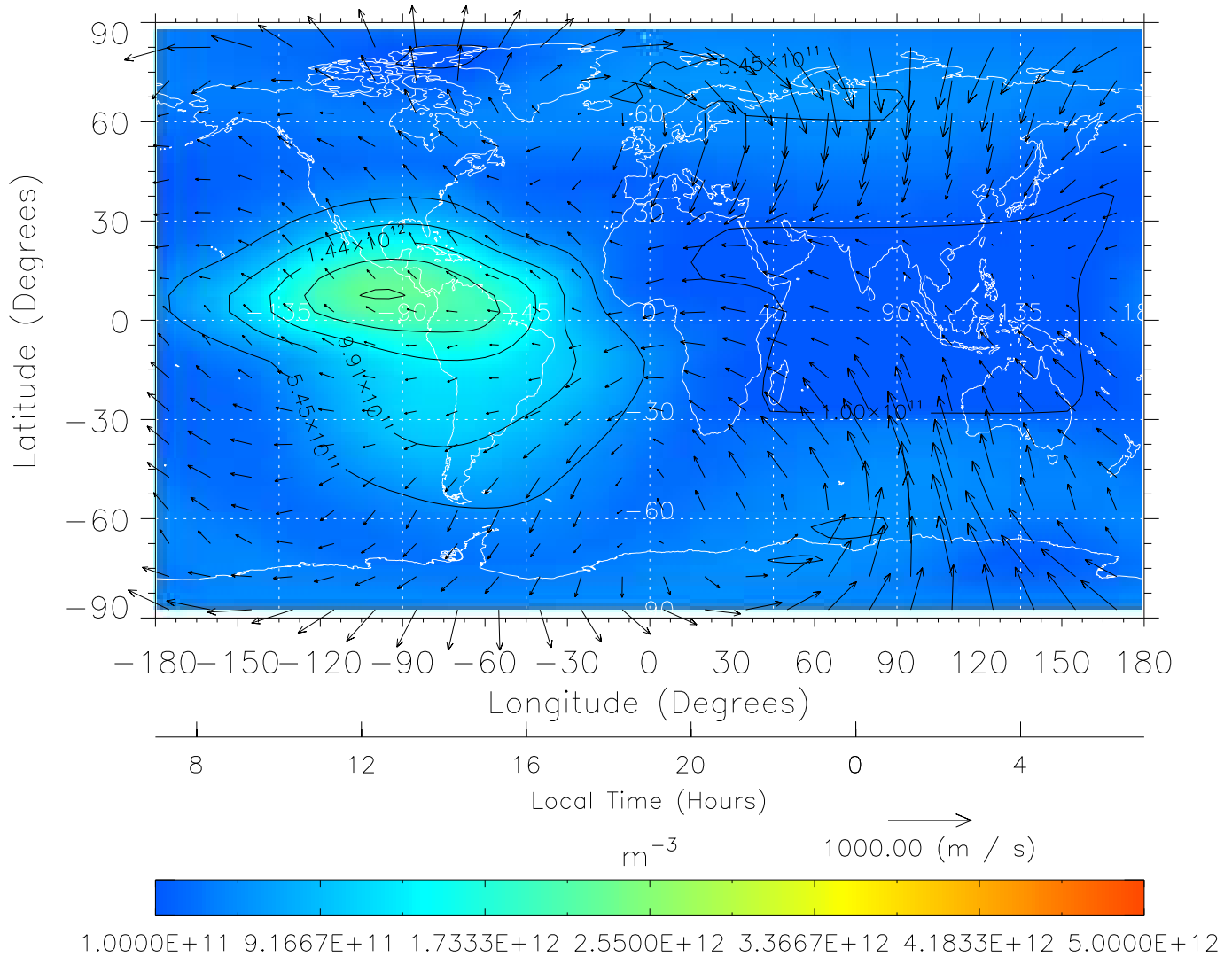
TIME-GCM MAP NmF2 with Neutral Wind vectors  
 ZP = 2.00 UT = 18.00 DOY = 324



Created: Thu Mar 10 14:26:55 2005

From: /home/tgcm/histories/secondary/OctoberNovember2003/OctoberNovember2003\_v1/324.nc

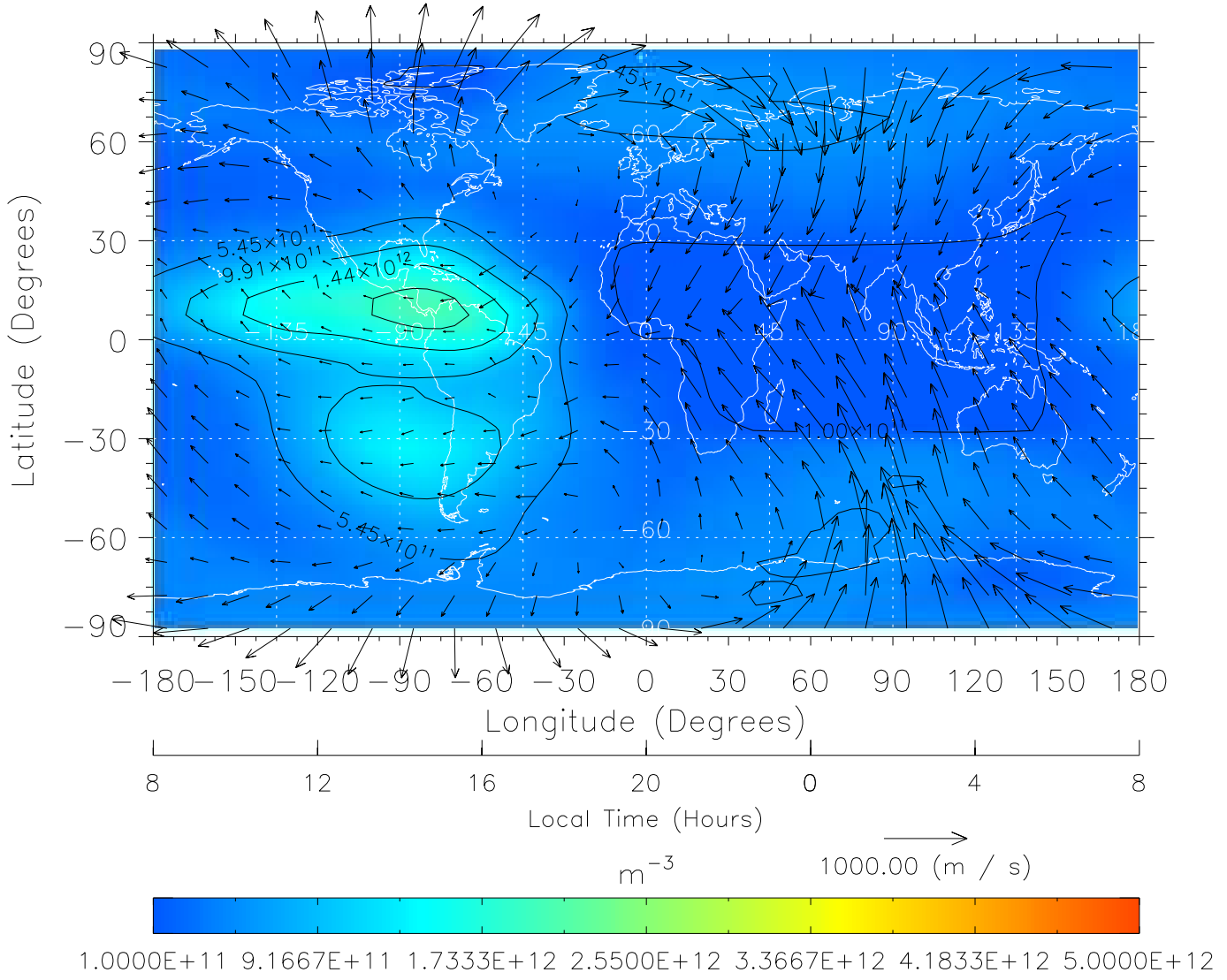
TIME-GCM MAP NmF2 with Neutral Wind vectors  
 ZP = 2.00 UT = 19.00 DOY = 324



Created: Thu Mar 10 14:26:56 2005

From: /home/tgcm/histories/secondary/OctoberNovember2003/OctoberNovember2003\_v1/324.nc

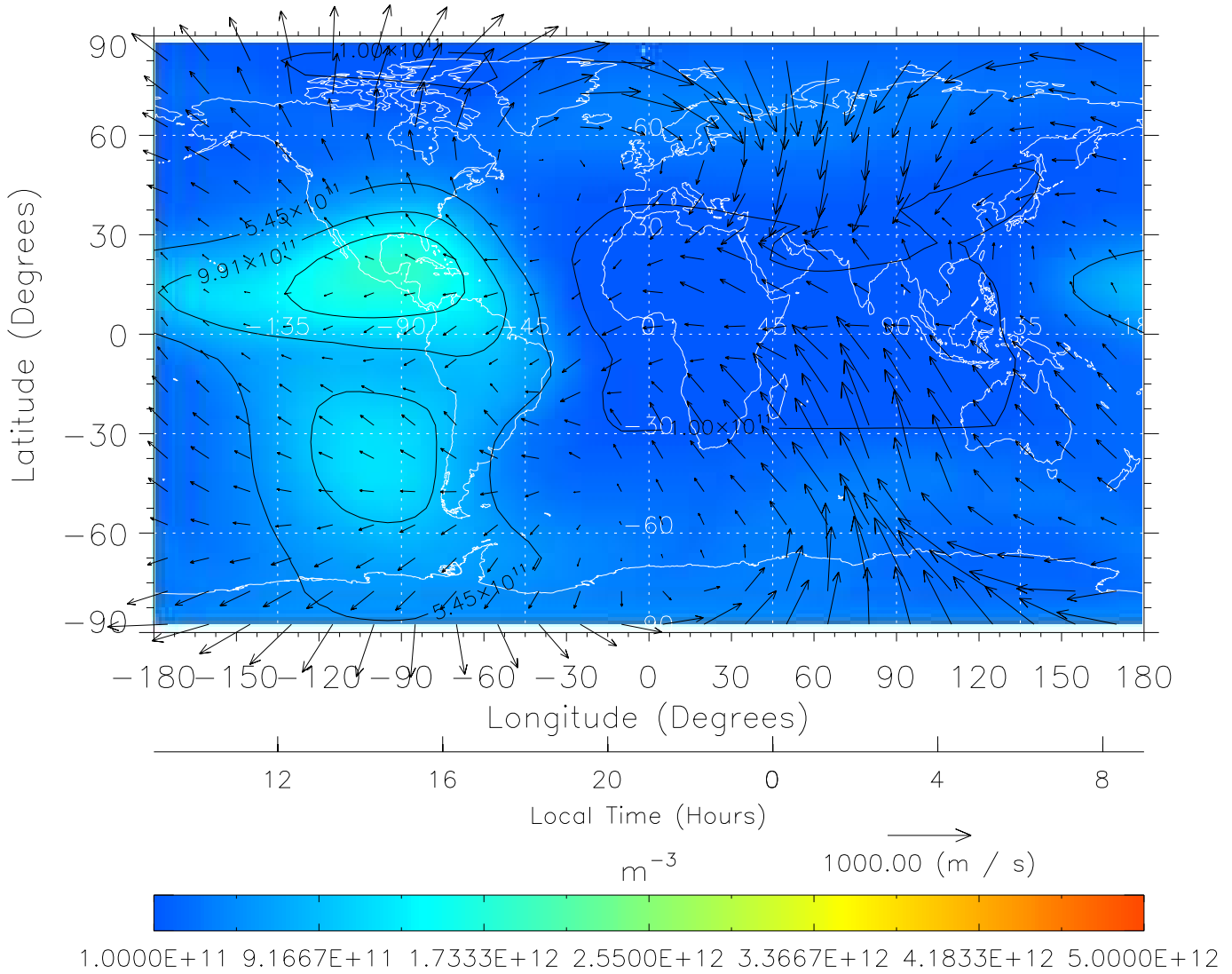
TIME-GCM MAP NmF2 with Neutral Wind vectors  
 ZP = 2.00 UT = 20.00 DOY = 324



Created: Thu Mar 10 14:26:56 2005

From: /home/tgcm/histories/secondary/OctoberNovember2003/OctoberNovember2003\_v1/324.nc

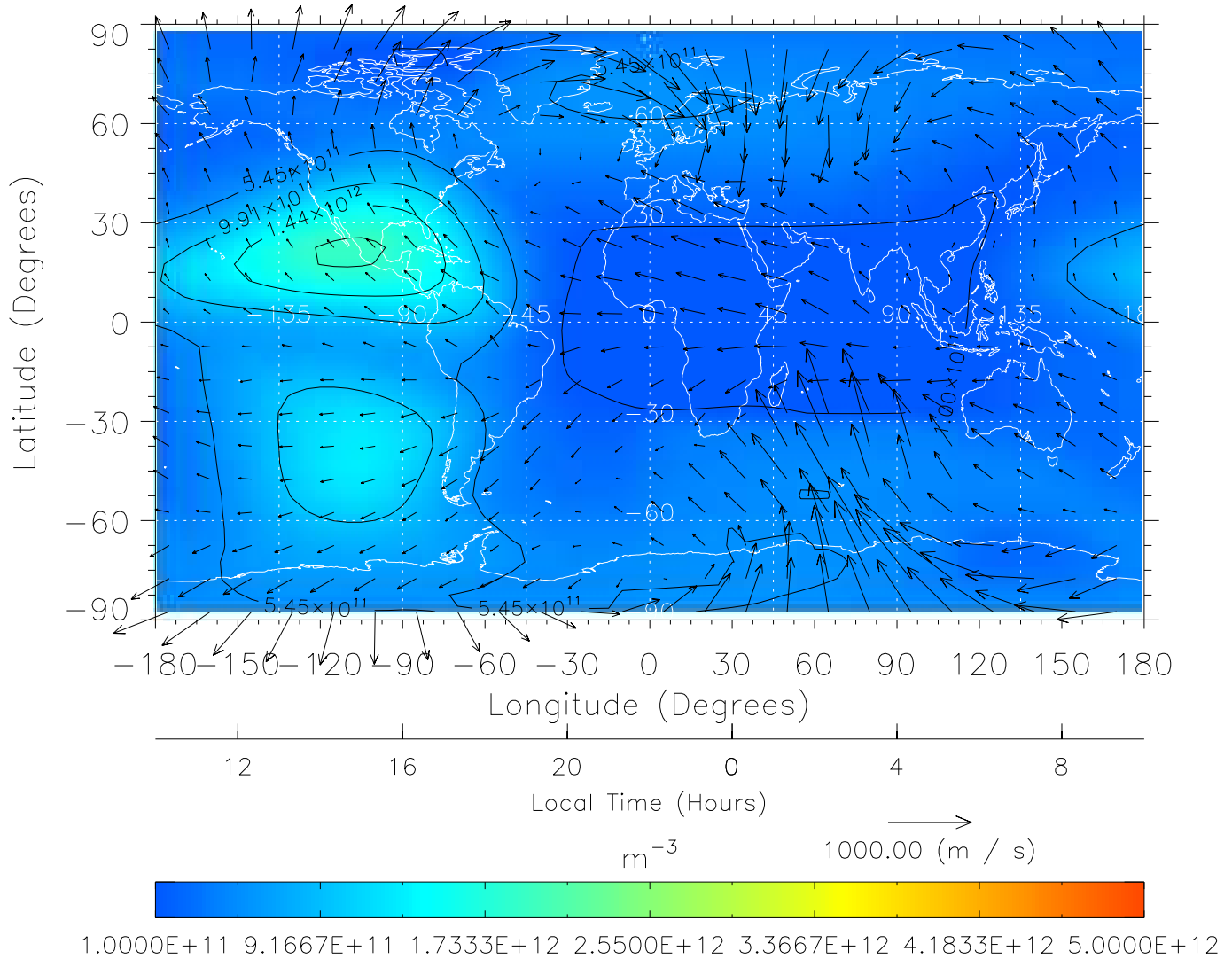
TIME-GCM MAP NmF2 with Neutral Wind vectors  
 ZP = 2.00 UT = 21.00 DOY = 324



Created: Thu Mar 10 14:26:57 2005

From: /home/tgcm/histories/secondary/OctoberNovember2003/OctoberNovember2003\_v1/324.nc

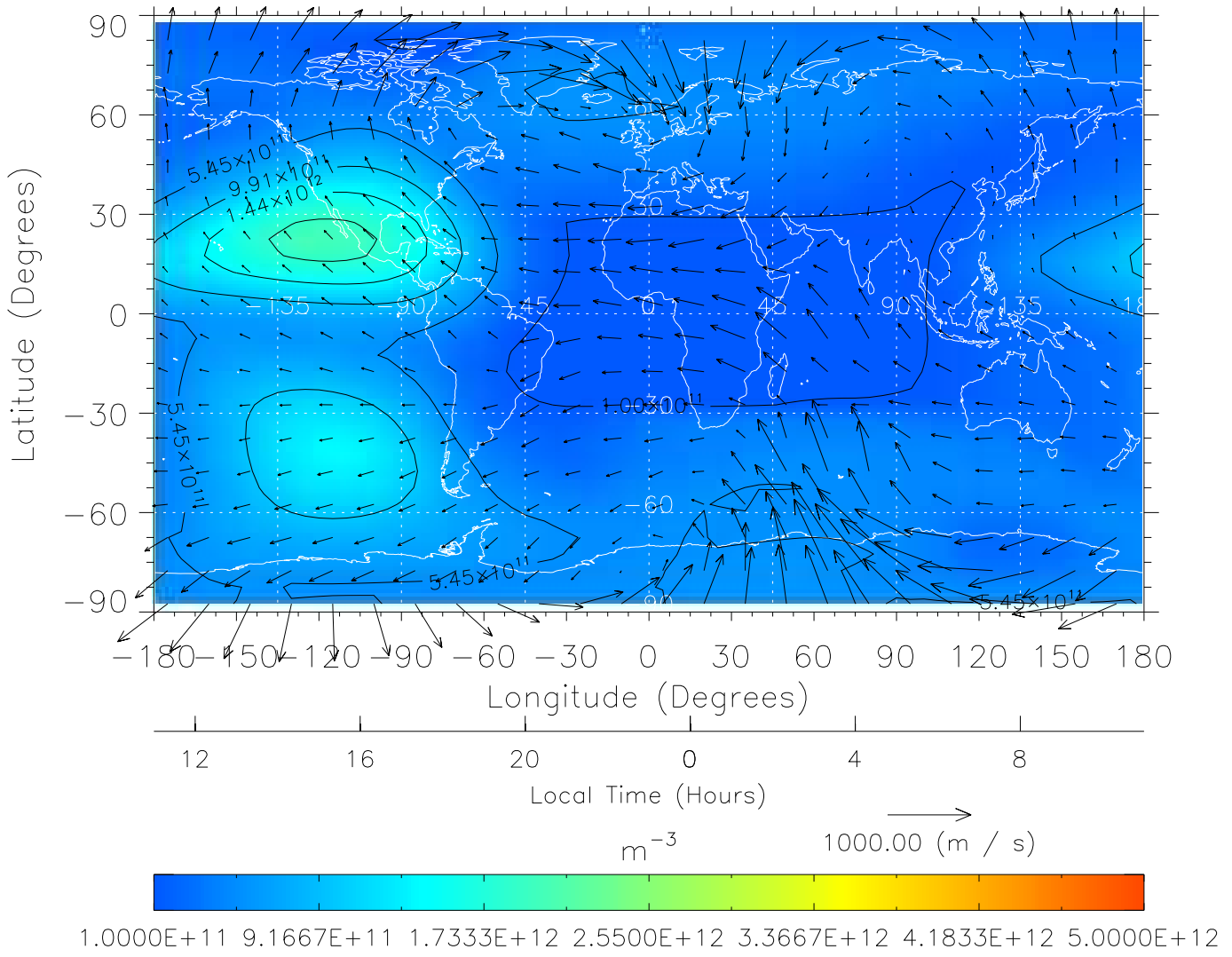
TIME-GCM MAP NmF2 with Neutral Wind vectors  
 ZP = 2.00 UT = 22.00 DOY = 324



Created: Thu Mar 10 14:26:57 2005

From: /home/tgcm/histories/secondary/OctoberNovember2003/OctoberNovember2003\_v1/324.nc

TIME-GCM MAP NmF2 with Neutral Wind vectors  
 ZP = 2.00 UT = 23.00 DOY = 324



Created: Thu Mar 10 14:26:58 2005

From: /home/tgcm/histories/secondary/OctoberNovember2003/OctoberNovember2003\_v1/324.nc