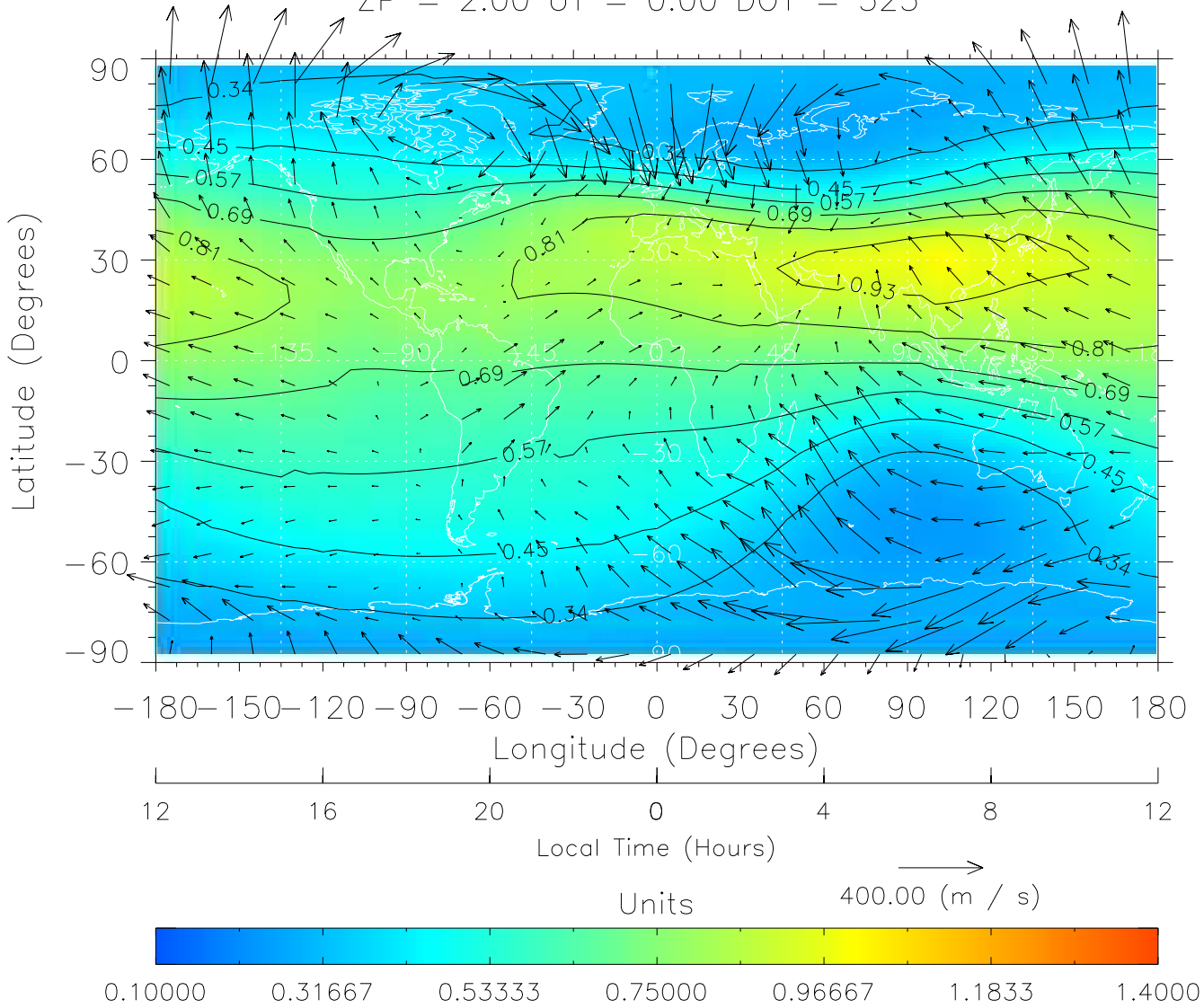


TIME-GCM MAP $\Sigma O/N_2$ with Neutral Wind vectors
ZP = 2.00 UT = 0.00 DOY = 323

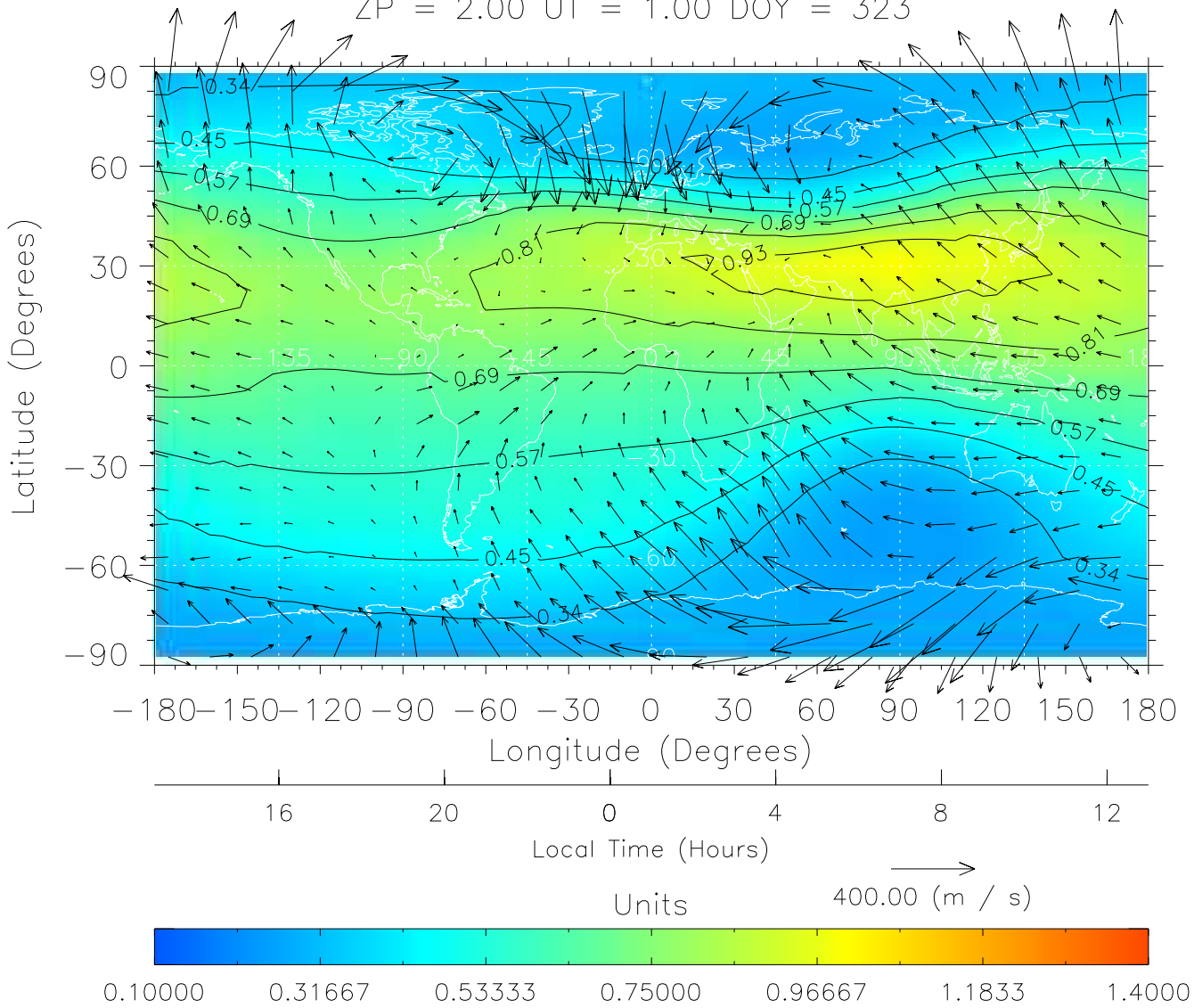


Created: Thu Mar 10 14:25:22 2005

From: /home/tgcm/histories/secondary/OctoberNovember2003/OctoberNovember2003_v1/323.nc

TIME-GCM MAP $\Sigma O/N_2$ with Neutral Wind vectors

ZP = 2.00 UT = 1.00 DOY = 323

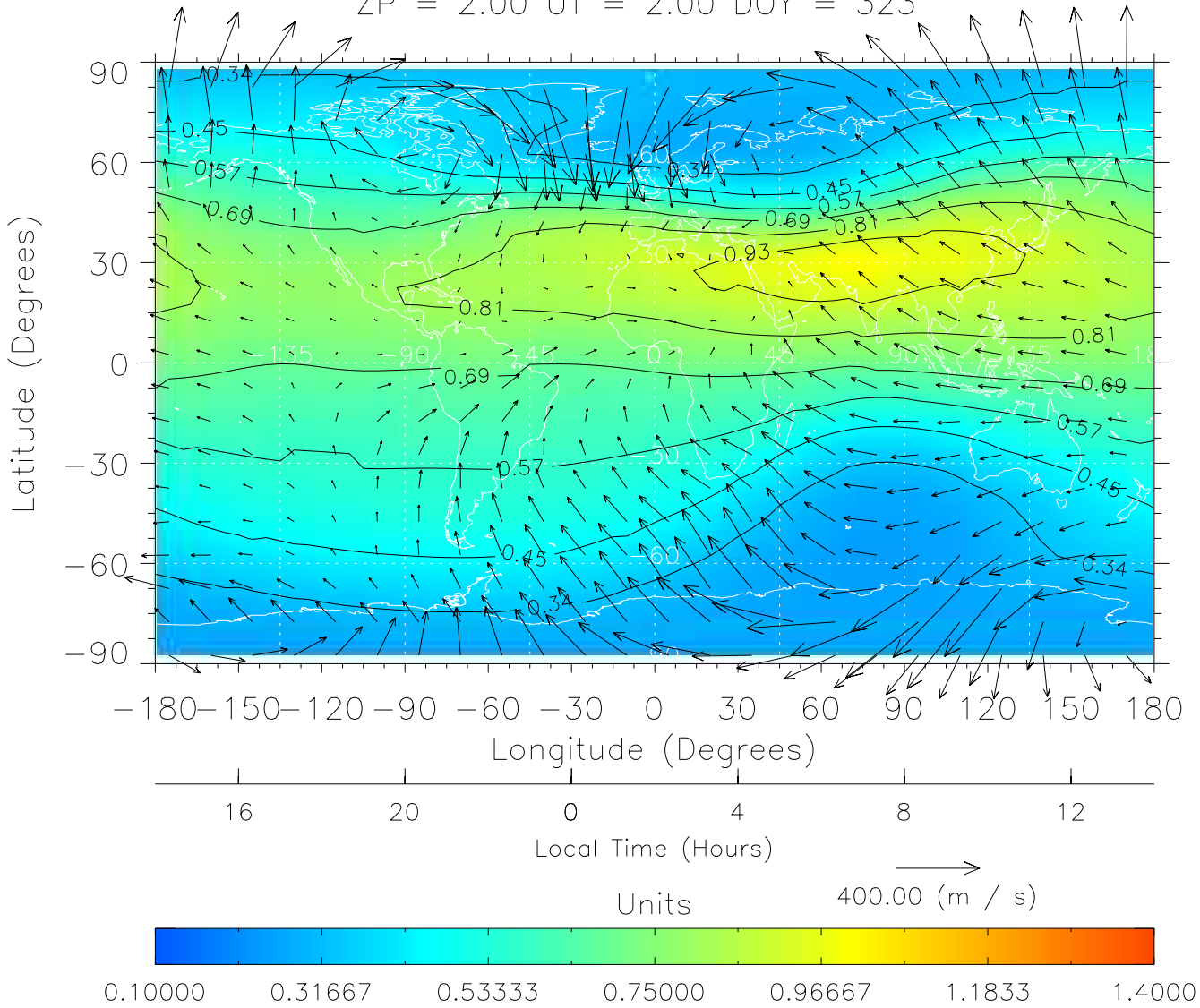


Created: Thu Mar 10 14:25:23 2005

From: /home/tgcm/histories/secondary/OctoberNovember2003/OctoberNovember2003_v1/323.nc

TIME-GCM MAP $\Sigma O/N_2$ with Neutral Wind vectors

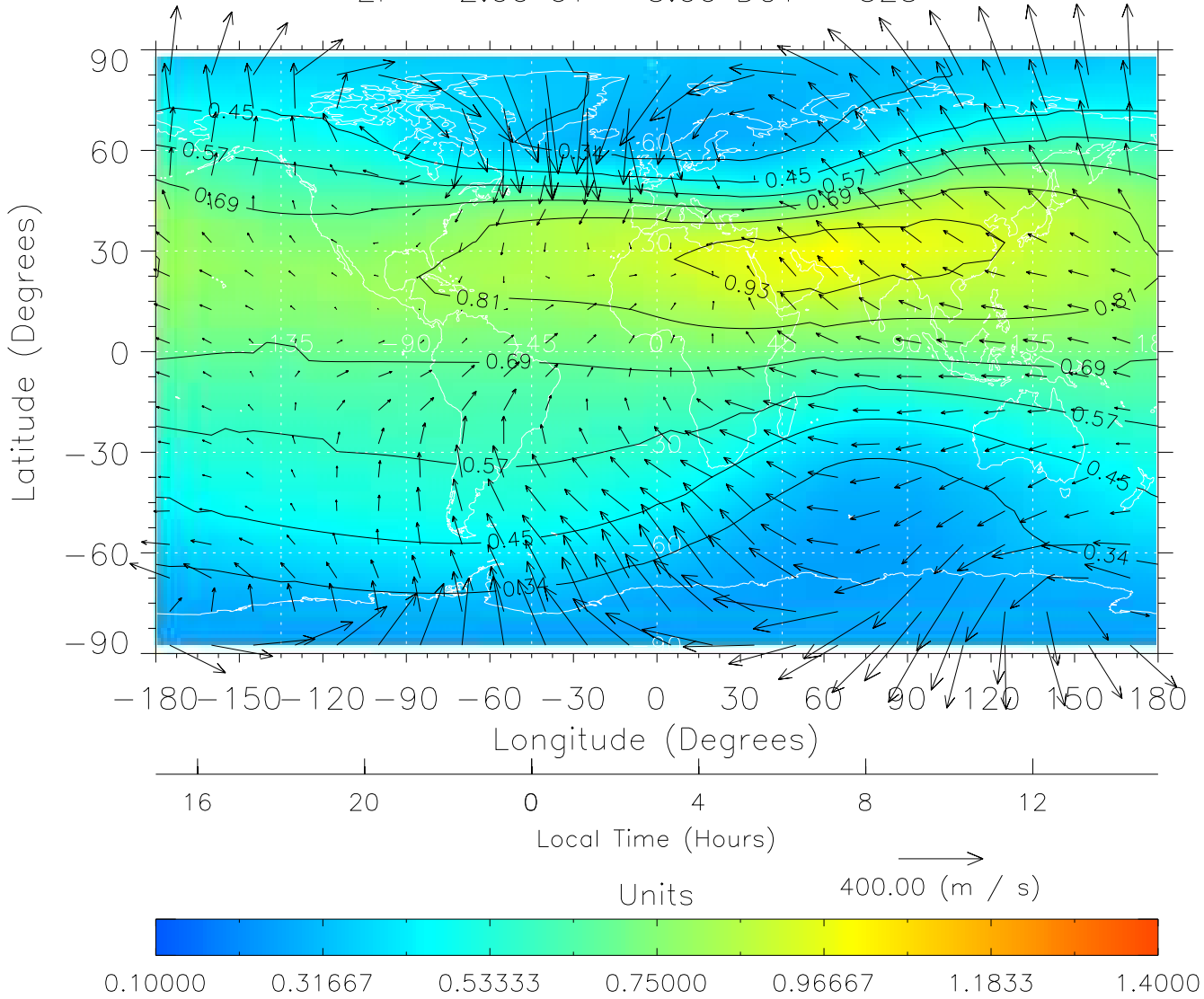
ZP = 2.00 UT = 2.00 DOY = 323



Created: Thu Mar 10 14:25:23 2005

From: /home/tgcm/histories/secondary/OctoberNovember2003/OctoberNovember2003_v1/323.nc

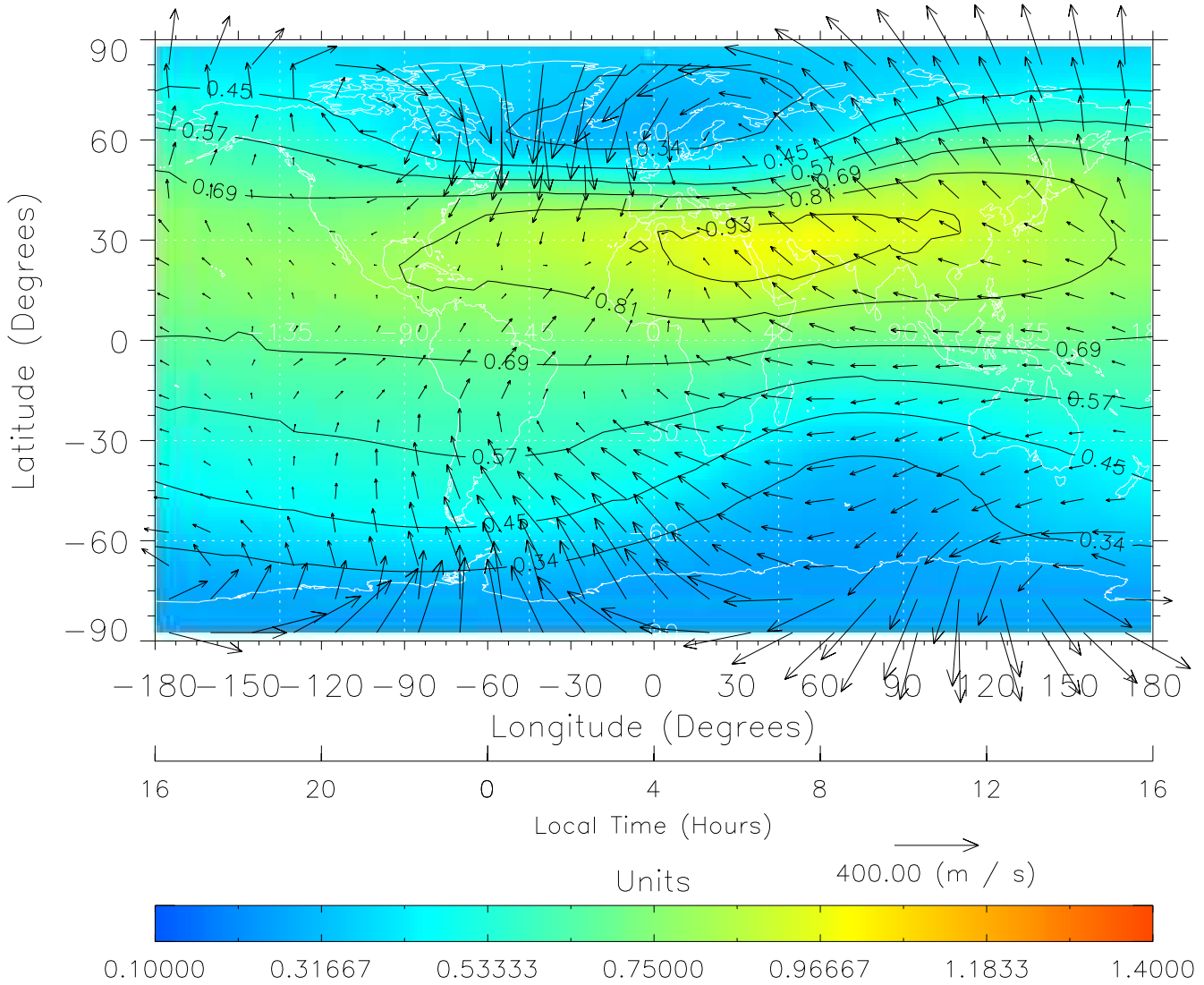
TIME-GCM MAP $\Sigma O/N_2$ with Neutral Wind vectors
ZP = 2.00 UT = 3.00 DOY = 323



Created: Thu Mar 10 14:25:24 2005

From: /home/tgcm/histories/secondary/OctoberNovember2003/OctoberNovember2003_v1/323.nc

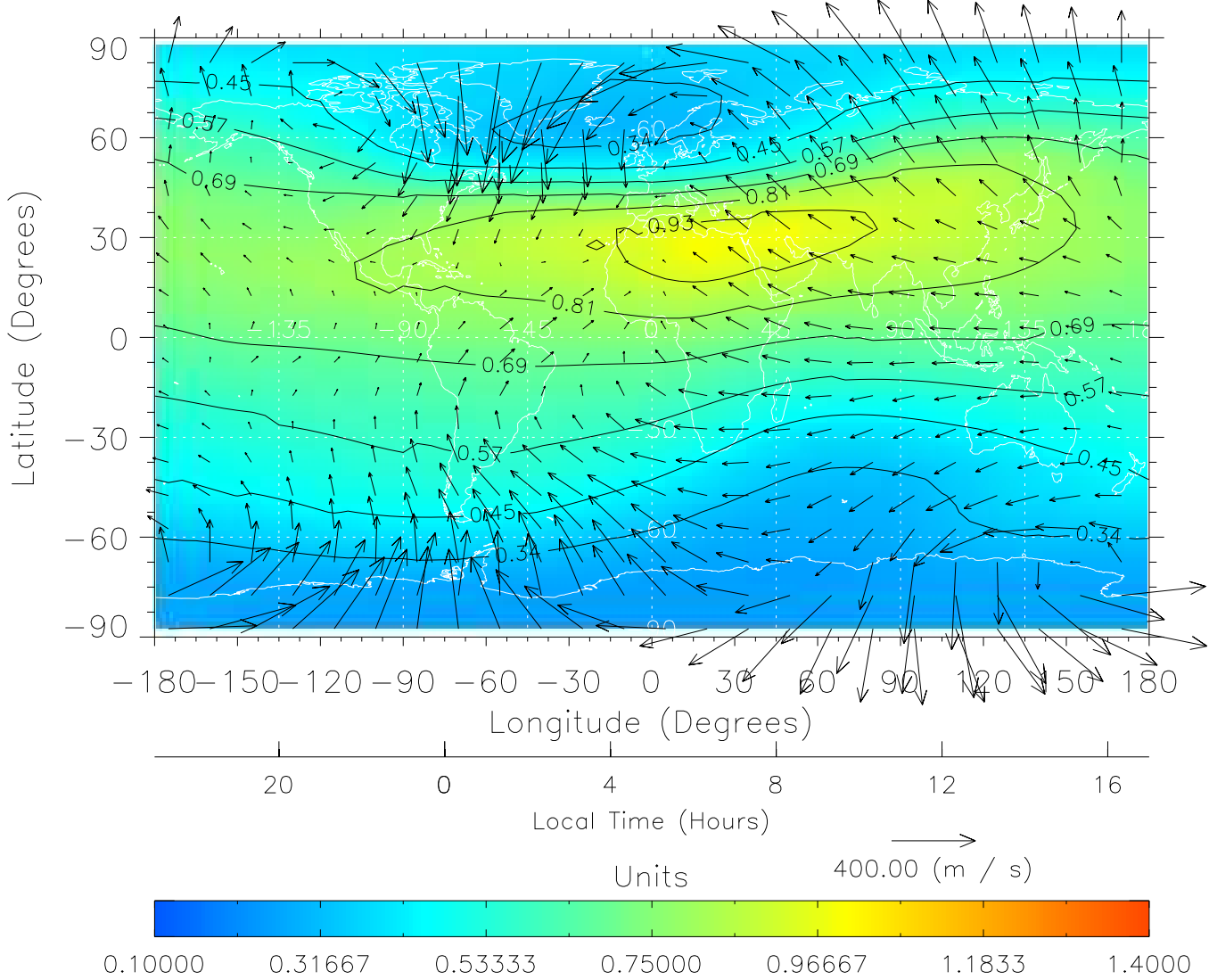
TIME-GCM MAP $\Sigma O/N_2$ with Neutral Wind vectors
ZP = 2.00 UT = 4.00 DOY = 323



Created: Thu Mar 10 14:25:24 2005

From: /home/tgcm/histories/secondary/OctoberNovember2003/OctoberNovember2003_v1/323.nc

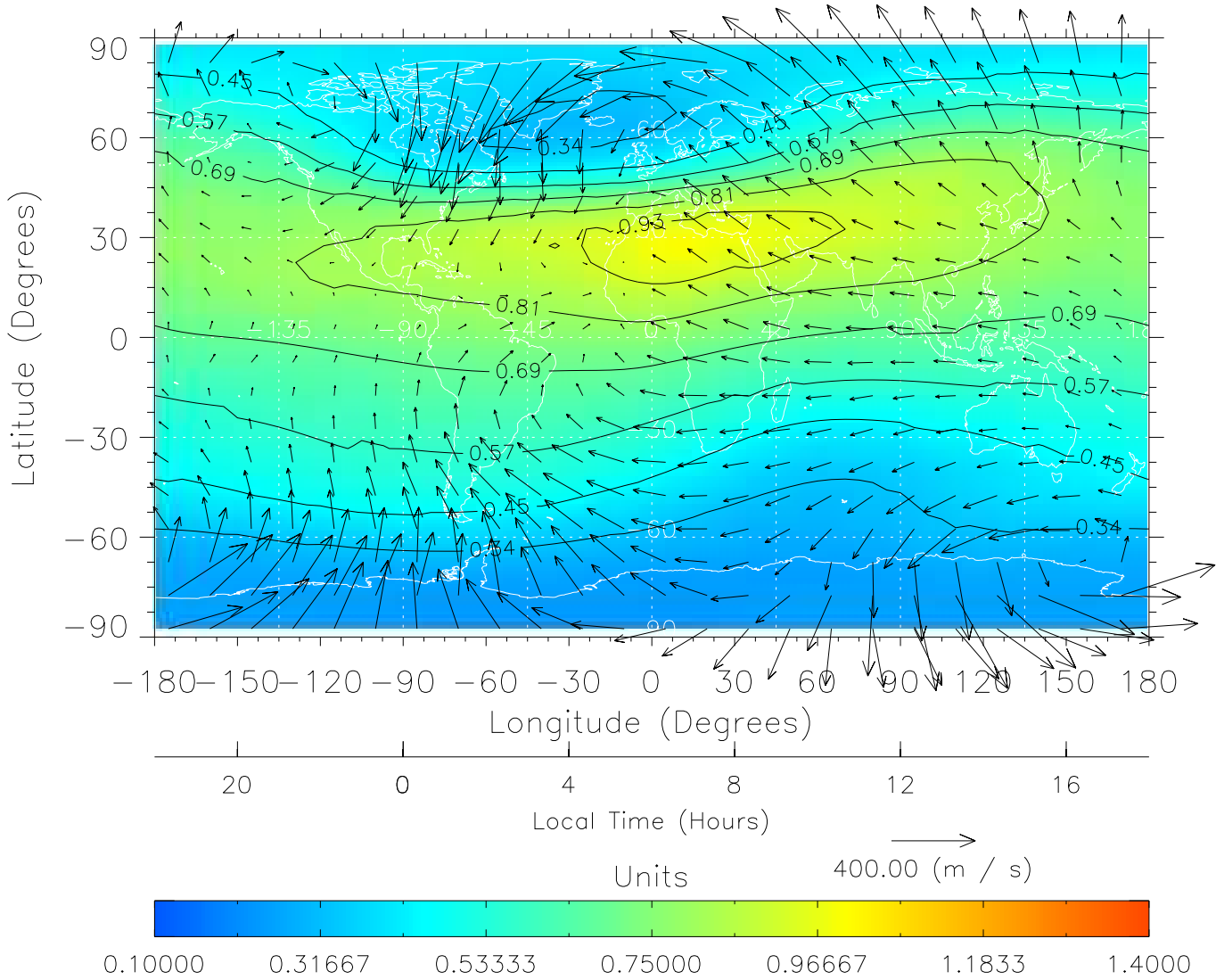
TIME-GCM MAP $\Sigma O/N_2$ with Neutral Wind vectors
ZP = 2.00 UT = 5.00 DOY = 323



Created: Thu Mar 10 14:25:25 2005

From: /home/tgcm/histories/secondary/OctoberNovember2003/OctoberNovember2003_v1/323.nc

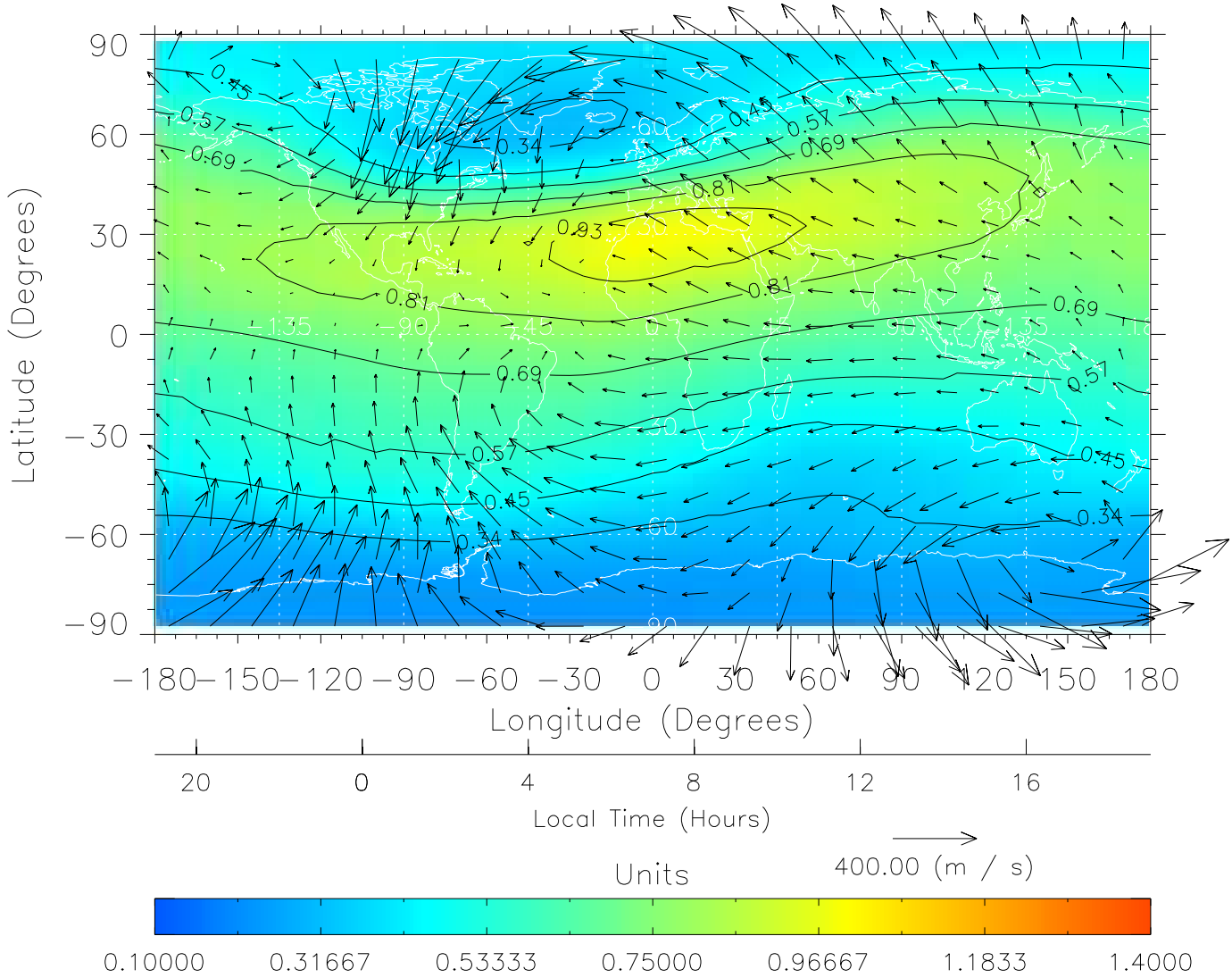
TIME-GCM MAP $\Sigma O/N_2$ with Neutral Wind vectors
ZP = 2.00 UT = 6.00 DOY = 323



Created: Thu Mar 10 14:25:25 2005

From: /home/tgcm/histories/secondary/OctoberNovember2003/OctoberNovember2003_v1/323.nc

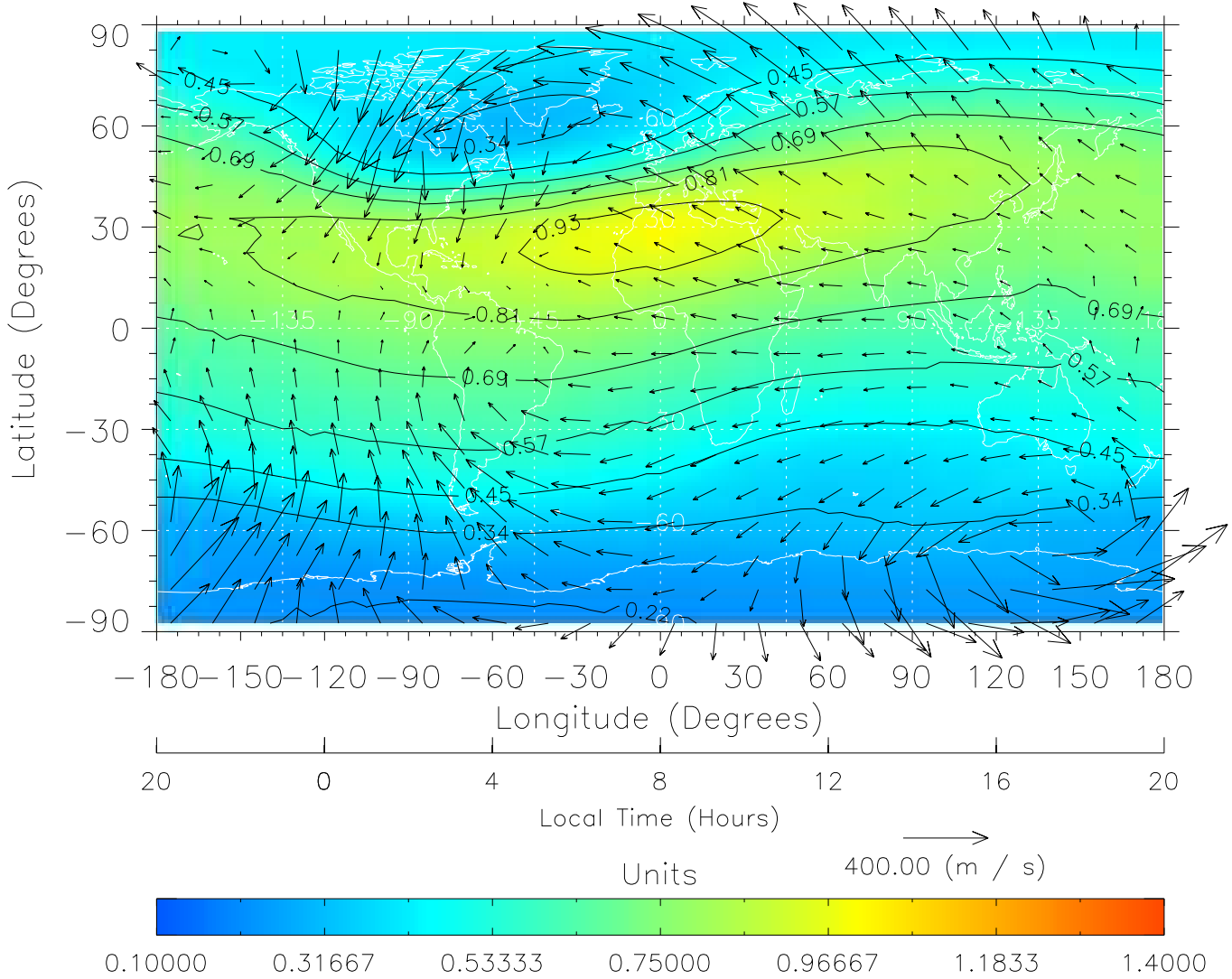
TIME-GCM MAP $\Sigma O/N_2$ with Neutral Wind vectors
ZP = 2.00 UT = 7.00 DOY = 323



Created: Thu Mar 10 14:25:26 2005

From: /home/tgcm/histories/secondary/OctoberNovember2003/OctoberNovember2003_v1/323.nc

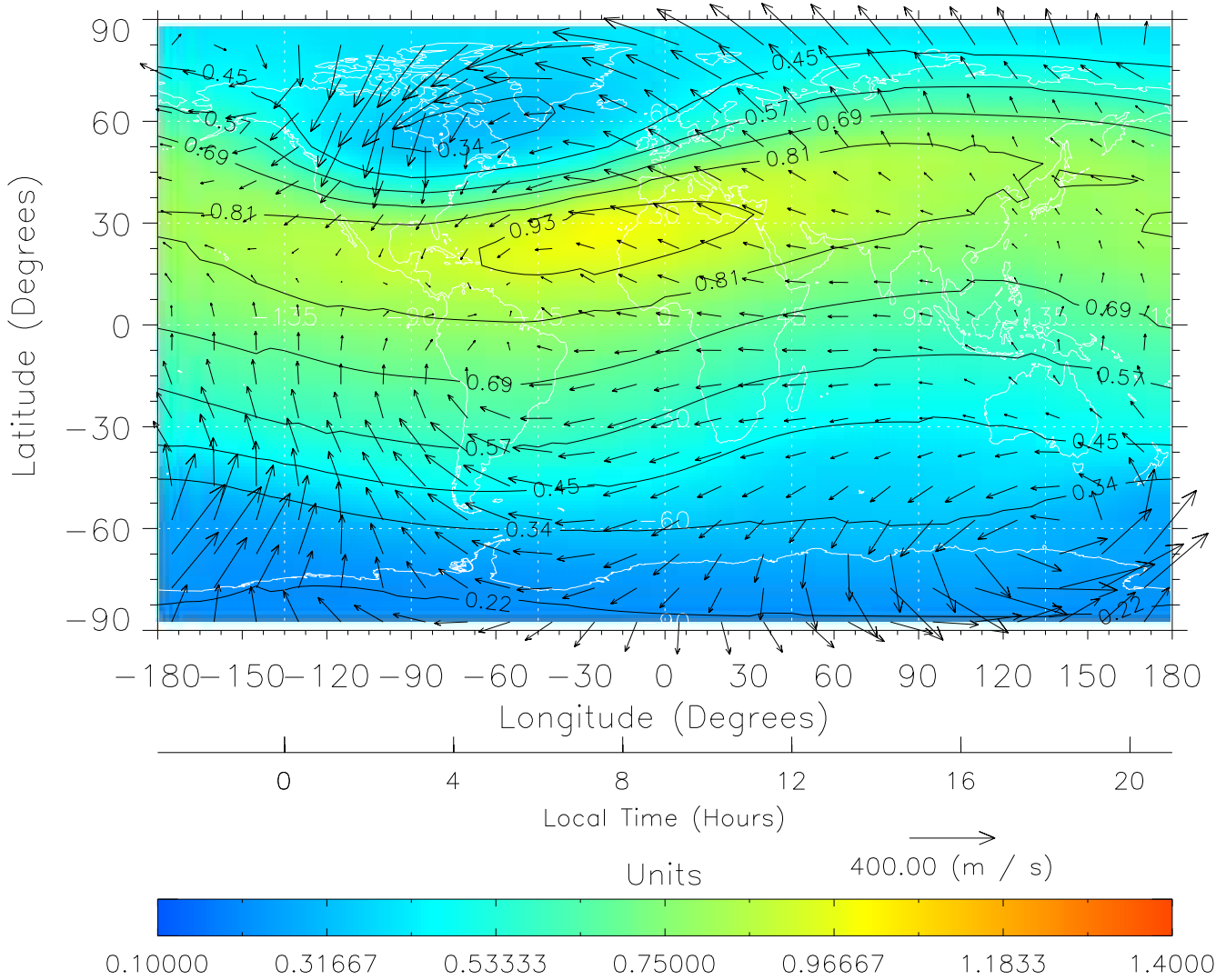
TIME-GCM MAP $\Sigma O/N_2$ with Neutral Wind vectors
ZP = 2.00 UT = 8.00 DOY = 323



Created: Thu Mar 10 14:25:26 2005

From: /home/tgcm/histories/secondary/OctoberNovember2003/OctoberNovember2003_v1/323.nc

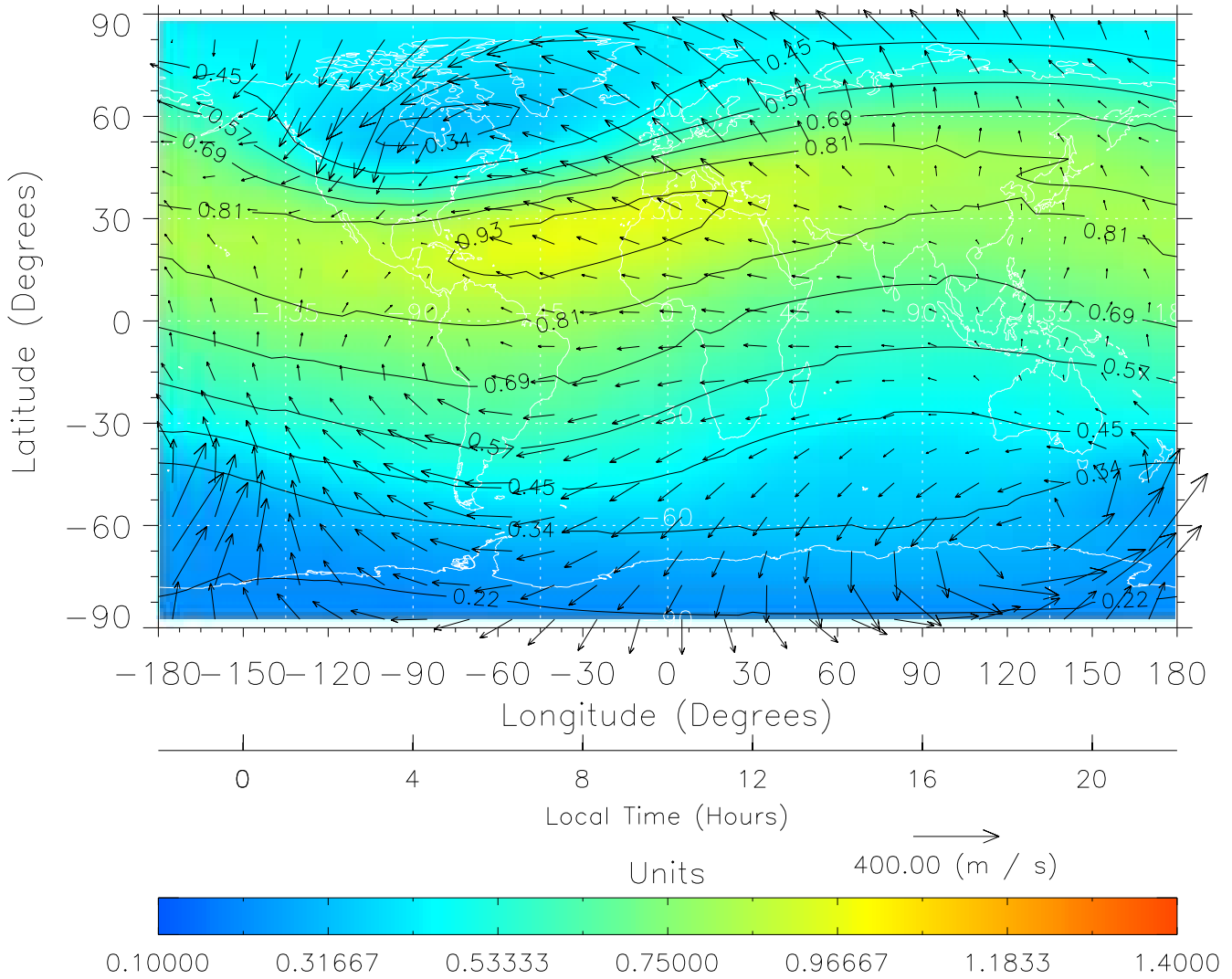
TIME-GCM MAP $\Sigma O/N_2$ with Neutral Wind vectors
ZP = 2.00 UT = 9.00 DOY = 323



Created: Thu Mar 10 14:25:26 2005

From: /home/tgcm/histories/secondary/OctoberNovember2003/OctoberNovember2003_v1/323.nc

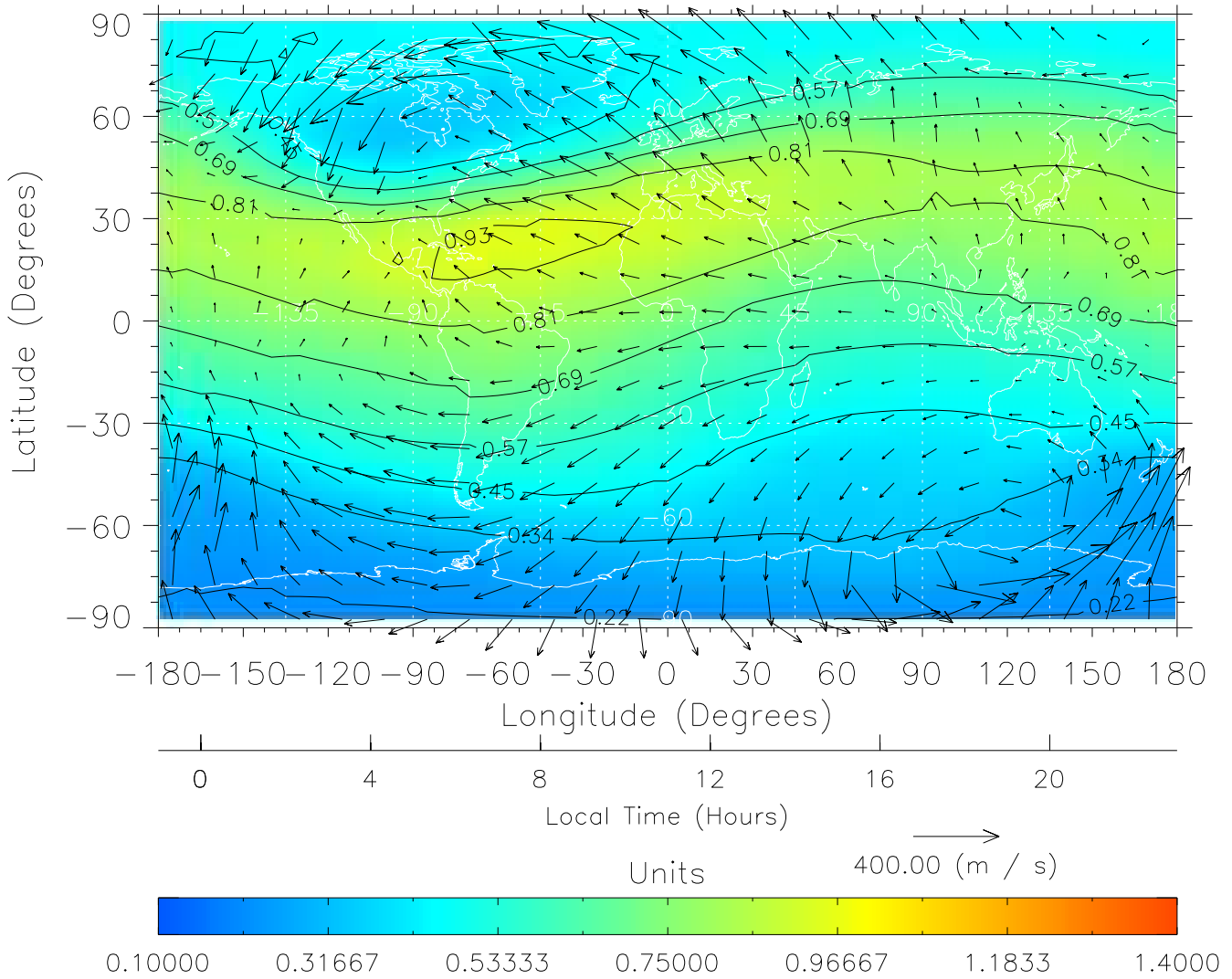
TIME-GCM MAP $\Sigma O/N_2$ with Neutral Wind vectors
ZP = 2.00 UT = 10.00 DOY = 323



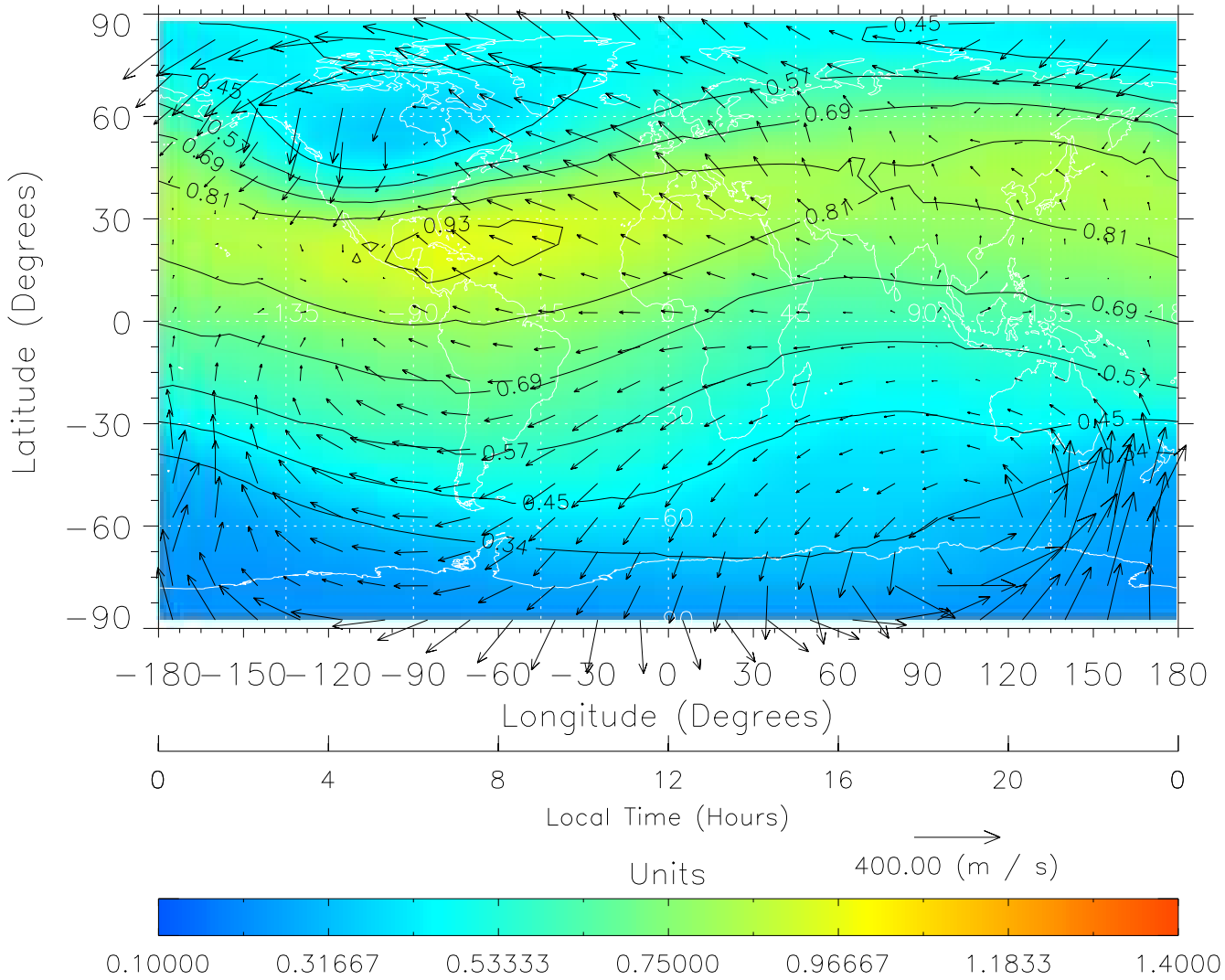
Created: Thu Mar 10 14:25:27 2005

From: /home/tgcm/histories/secondary/OctoberNovember2003/OctoberNovember2003_v1/323.nc

TIME-GCM MAP $\Sigma O/N_2$ with Neutral Wind vectors
ZP = 2.00 UT = 11.00 DOY = 323



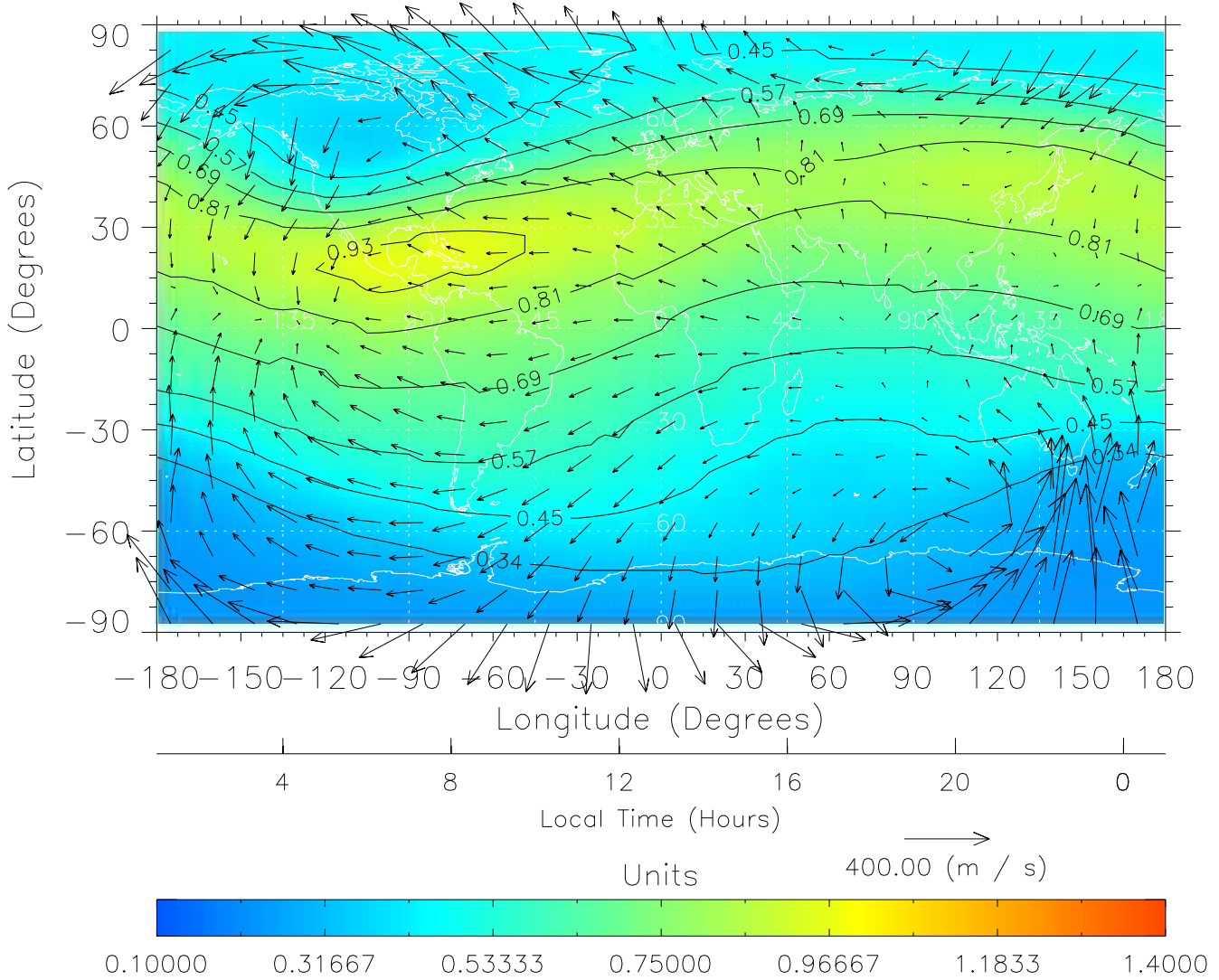
TIME-GCM MAP $\Sigma O/N_2$ with Neutral Wind vectors
ZP = 2.00 UT = 12.00 DOY = 323



Created: Thu Mar 10 14:25:28 2005

From: /home/tgcm/histories/secondary/OctoberNovember2003/OctoberNovember2003_v1/323.nc

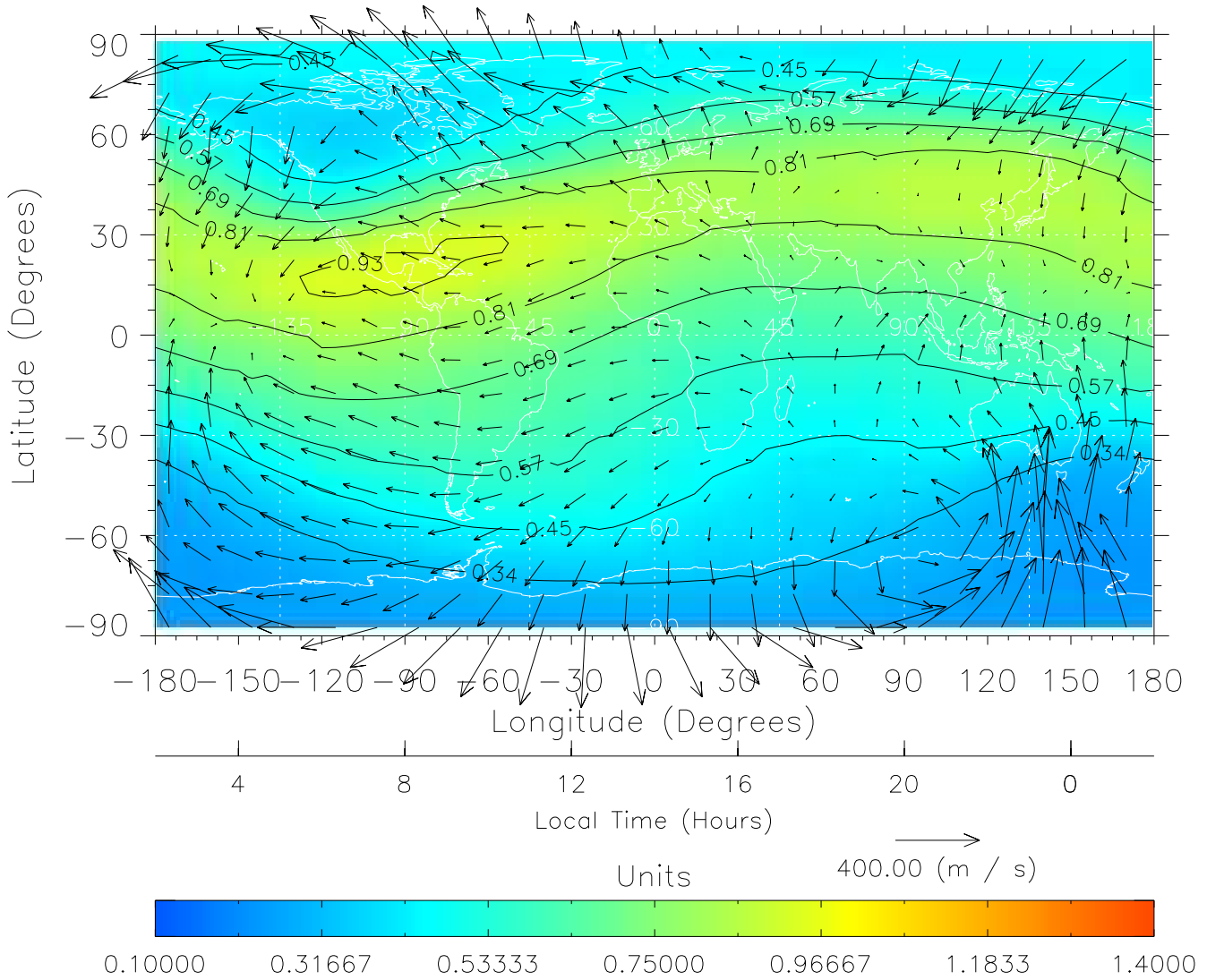
TIME-GCM MAP $\Sigma O/N_2$ with Neutral Wind vectors
ZP = 2.00 UT = 13.00 DOY = 323



Created: Thu Mar 10 14:25:28 2005

From: /home/tgcm/histories/secondary/OctoberNovember2003/OctoberNovember2003_v1/323.nc

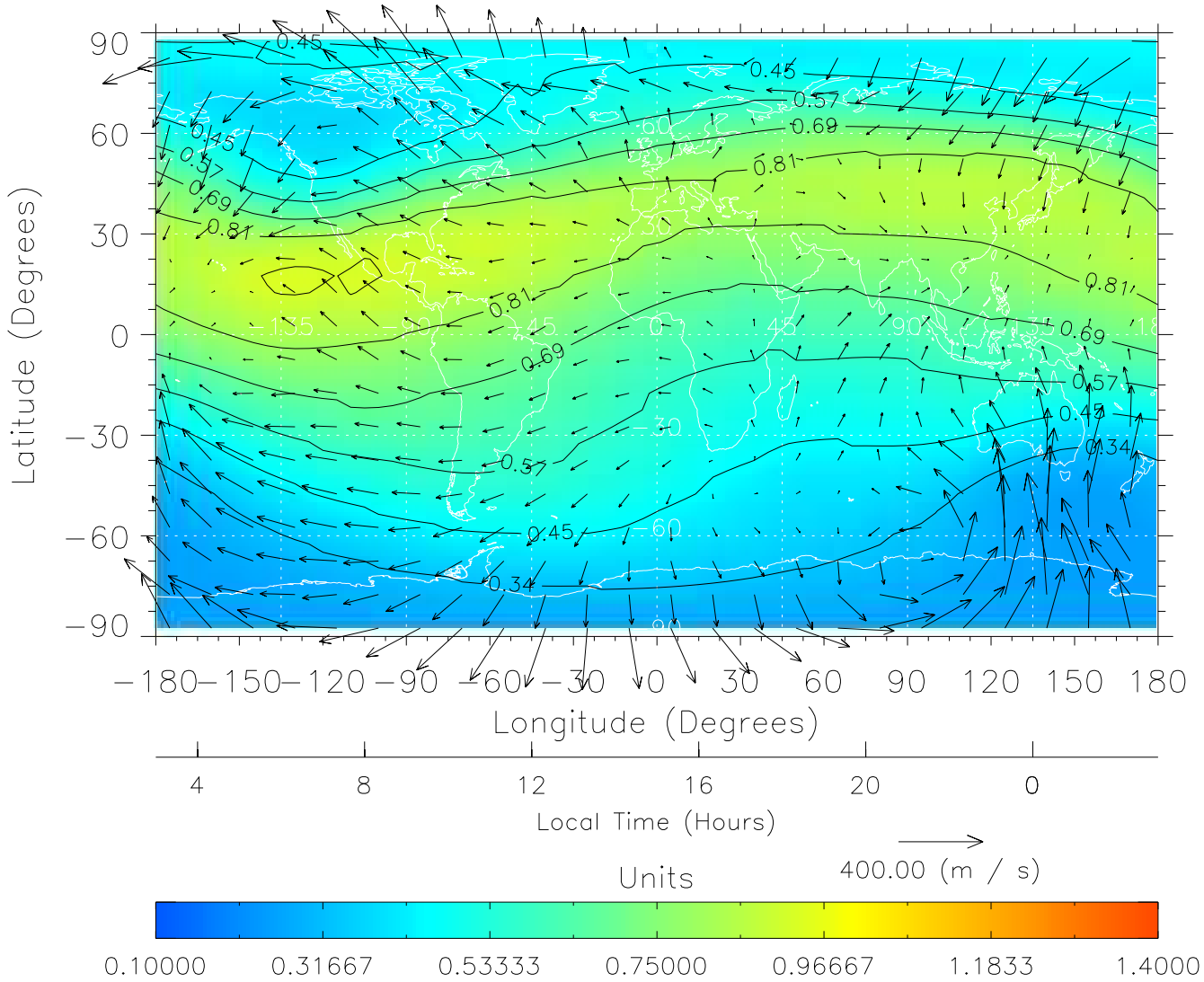
TIME-GCM MAP $\Sigma O/N_2$ with Neutral Wind vectors
ZP = 2.00 UT = 14.00 DOY = 323



Created: Thu Mar 10 14:25:29 2005

From: /home/tgcm/histories/secondary/OctoberNovember2003/OctoberNovember2003_v1/323.nc

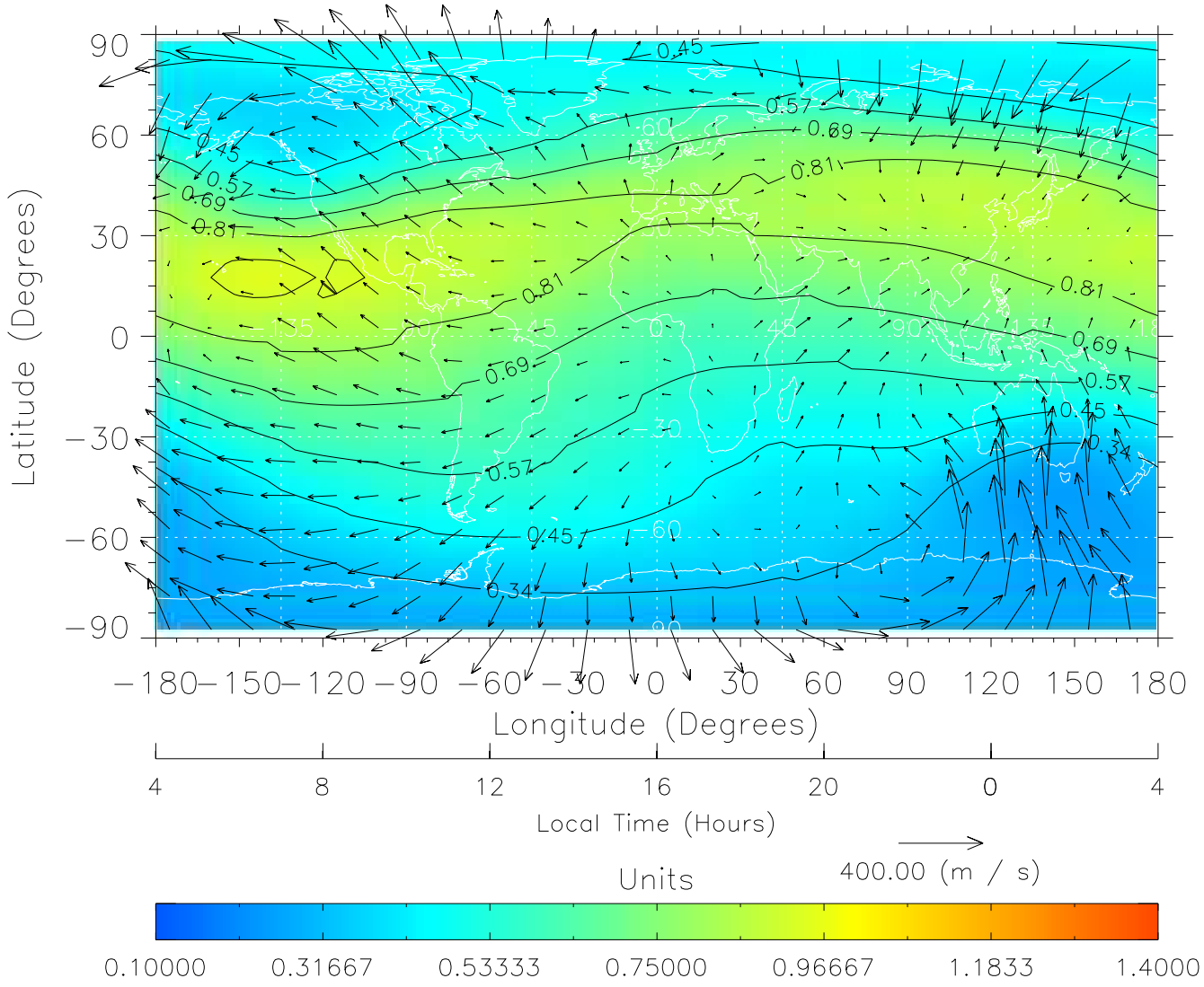
TIME-GCM MAP $\Sigma O/N_2$ with Neutral Wind vectors
ZP = 2.00 UT = 15.00 DOY = 323



Created: Thu Mar 10 14:25:29 2005

From: /home/tgcm/histories/secondary/OctoberNovember2003/OctoberNovember2003_v1/323.nc

TIME-GCM MAP $\Sigma O/N_2$ with Neutral Wind vectors
ZP = 2.00 UT = 16.00 DOY = 323

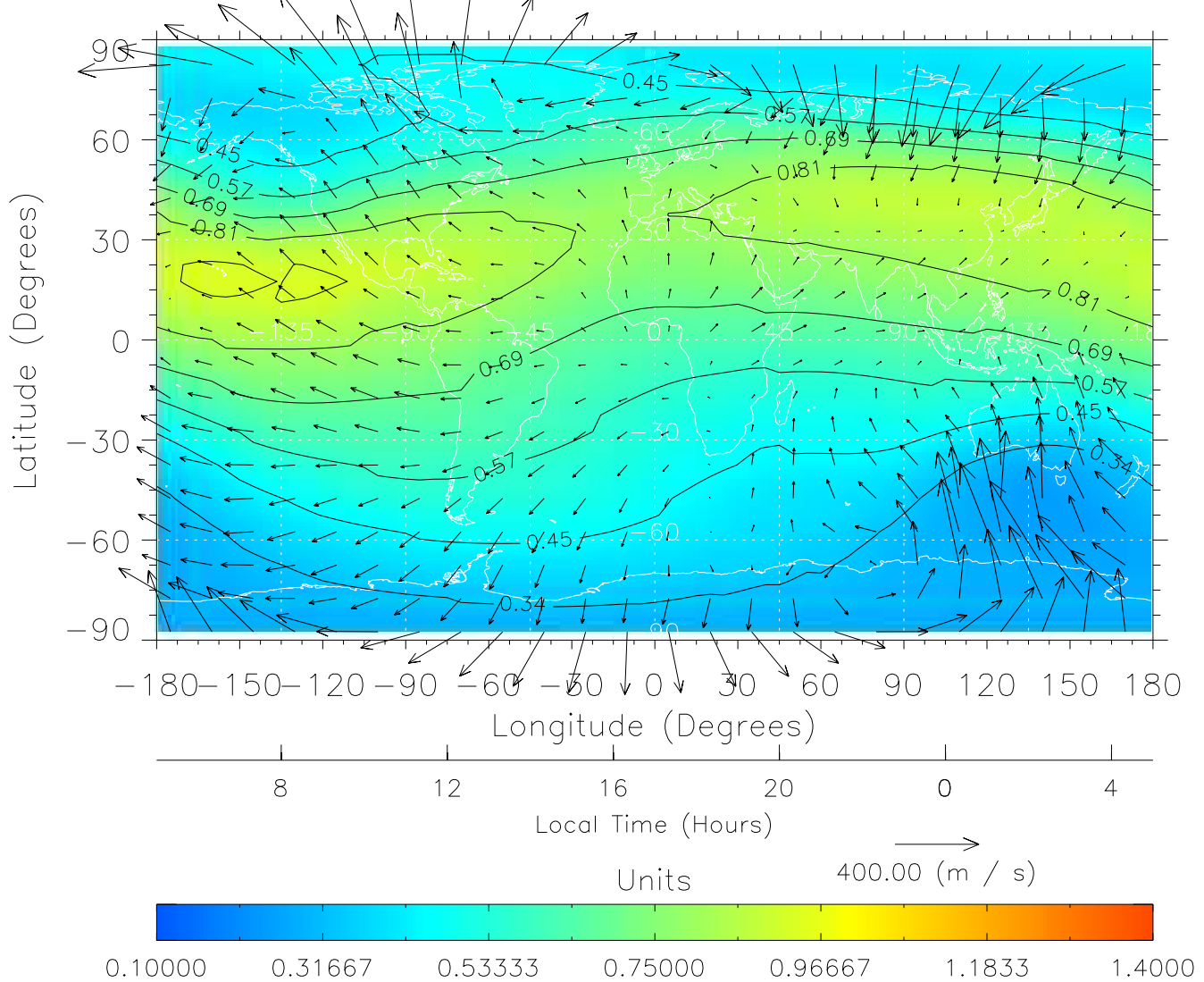


Created: Thu Mar 10 14:25:30 2005

From: /home/tgcm/histories/secondary/OctoberNovember2003/OctoberNovember2003_v1/323.nc

TIME-GCM MAP $\Sigma O/N_2$ with Neutral Wind vectors

ZP = 2.00 UT = 17.00 DOY = 323

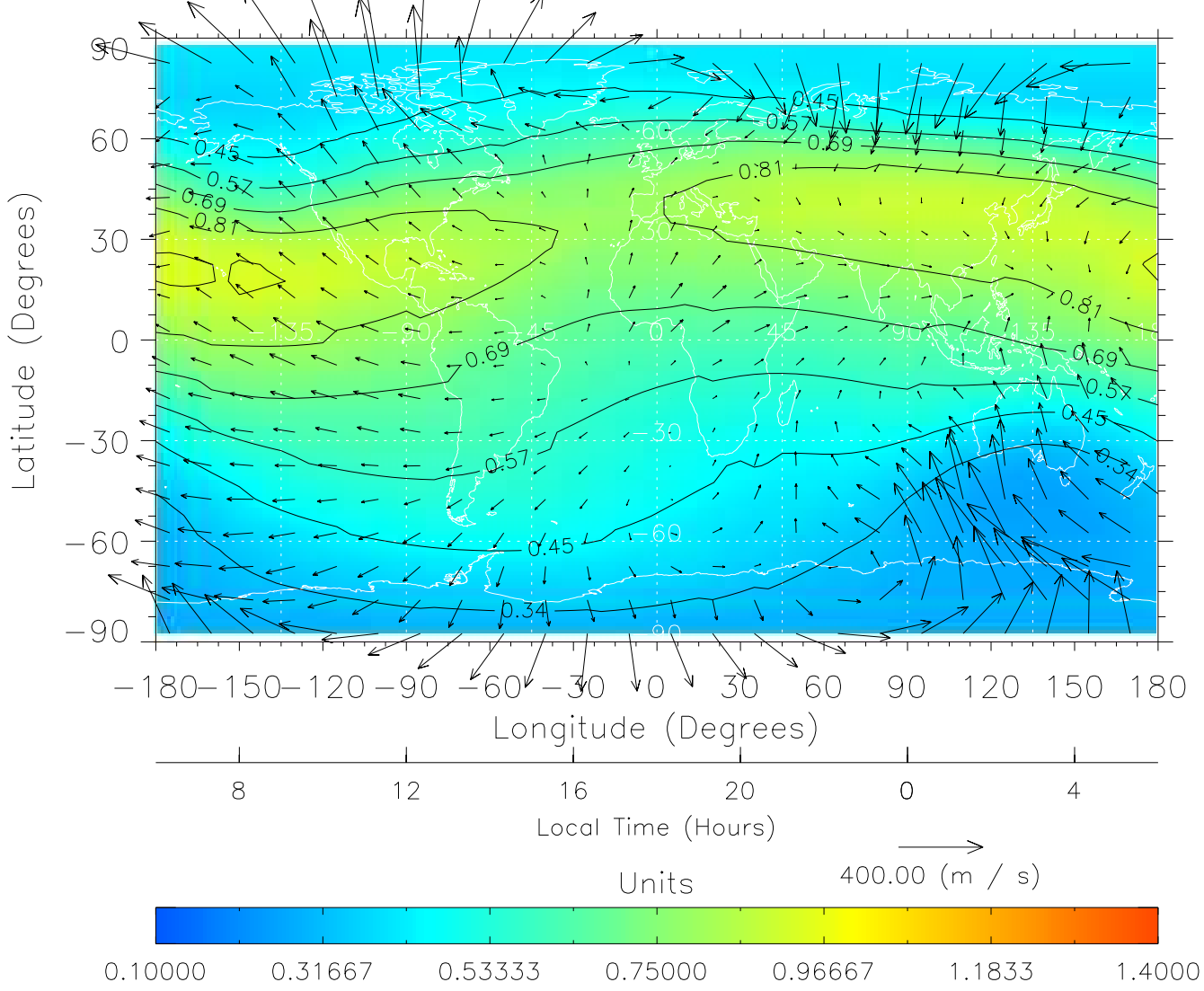


Created: Thu Mar 10 14:25:30 2005

From: /home/tgcm/histories/secondary/OctoberNovember2003/OctoberNovember2003_v1/323.nc

TIME-GCM MAP $\Sigma O/N_2$ with Neutral Wind vectors

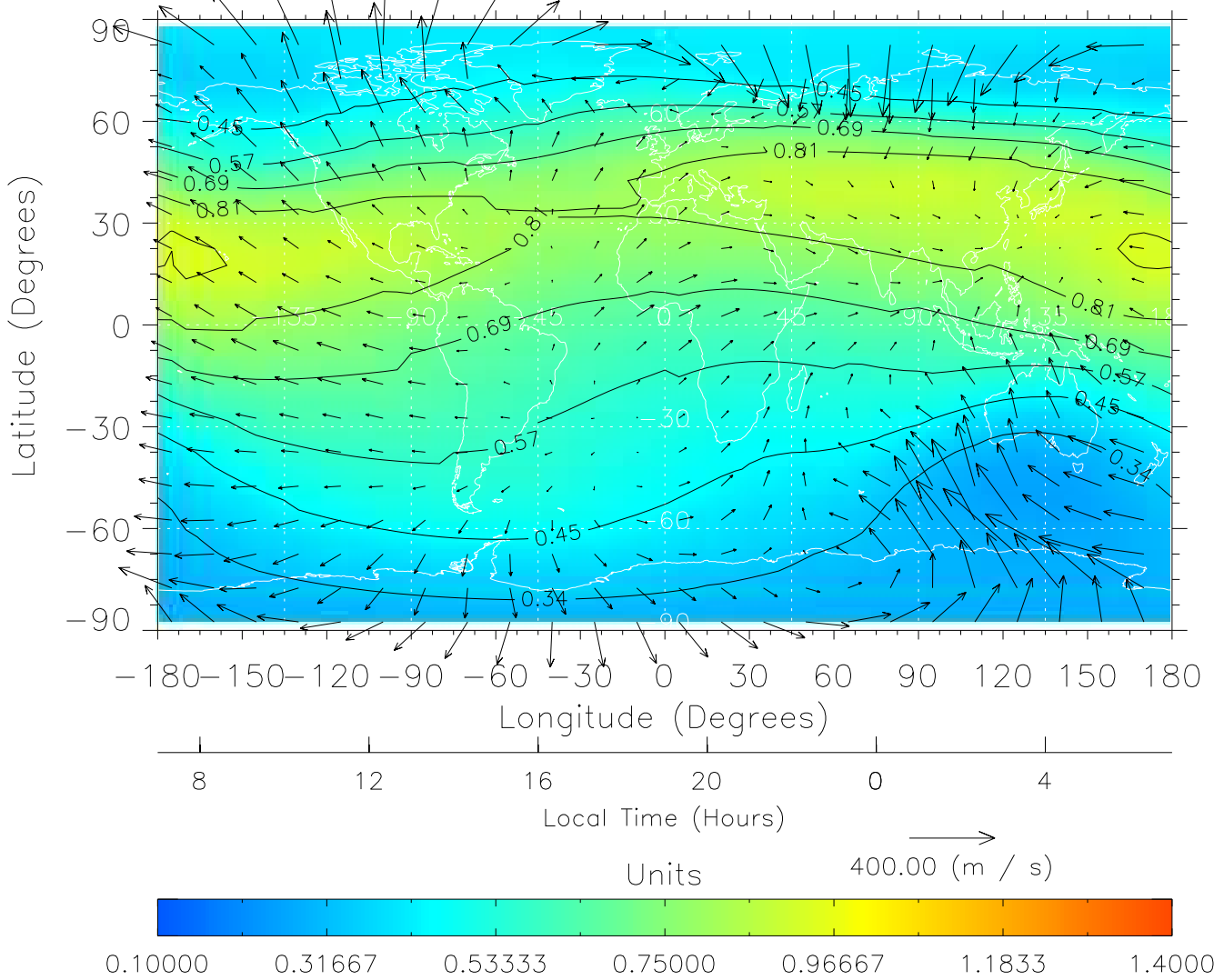
AP = 2.00 UT = 18.00 DOY = 323



Created: Thu Mar 10 14:25:31 2005

From: /home/tgcm/histories/secondary/OctoberNovember2003/OctoberNovember2003_v1/323.nc

TIME-GCM MAP $\Sigma O/N_2$ with Neutral Wind vectors
ZP = 2.00 UT = 19.00 DOY = 323

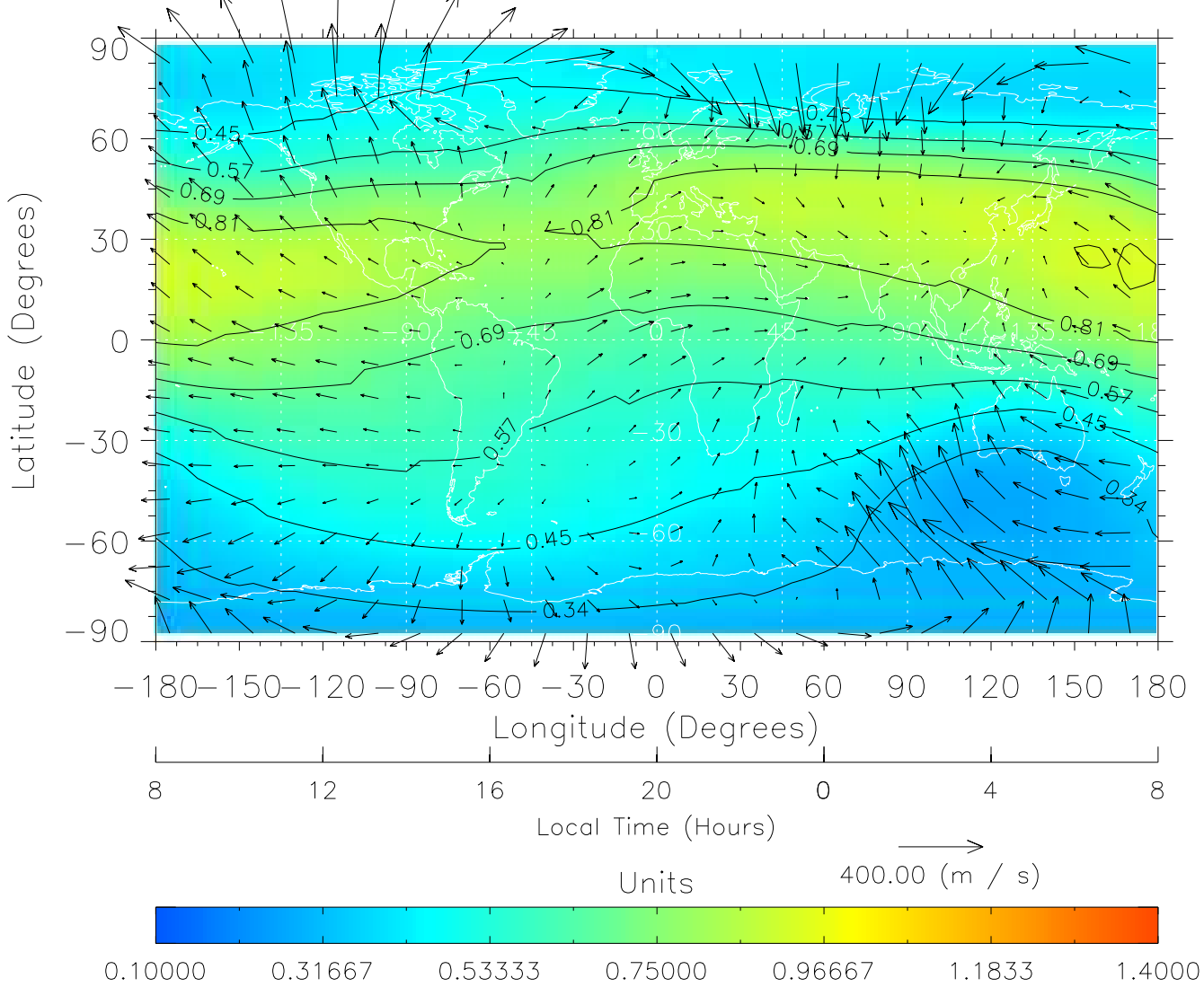


Created: Thu Mar 10 14:25:31 2005

From: /home/tgcm/histories/secondary/OctoberNovember2003/OctoberNovember2003_v1/323.nc

TIME-GCM MAP $\Sigma O/N_2$ with Neutral Wind vectors

ZP = 2.00 UT = 20.00 DOY = 323

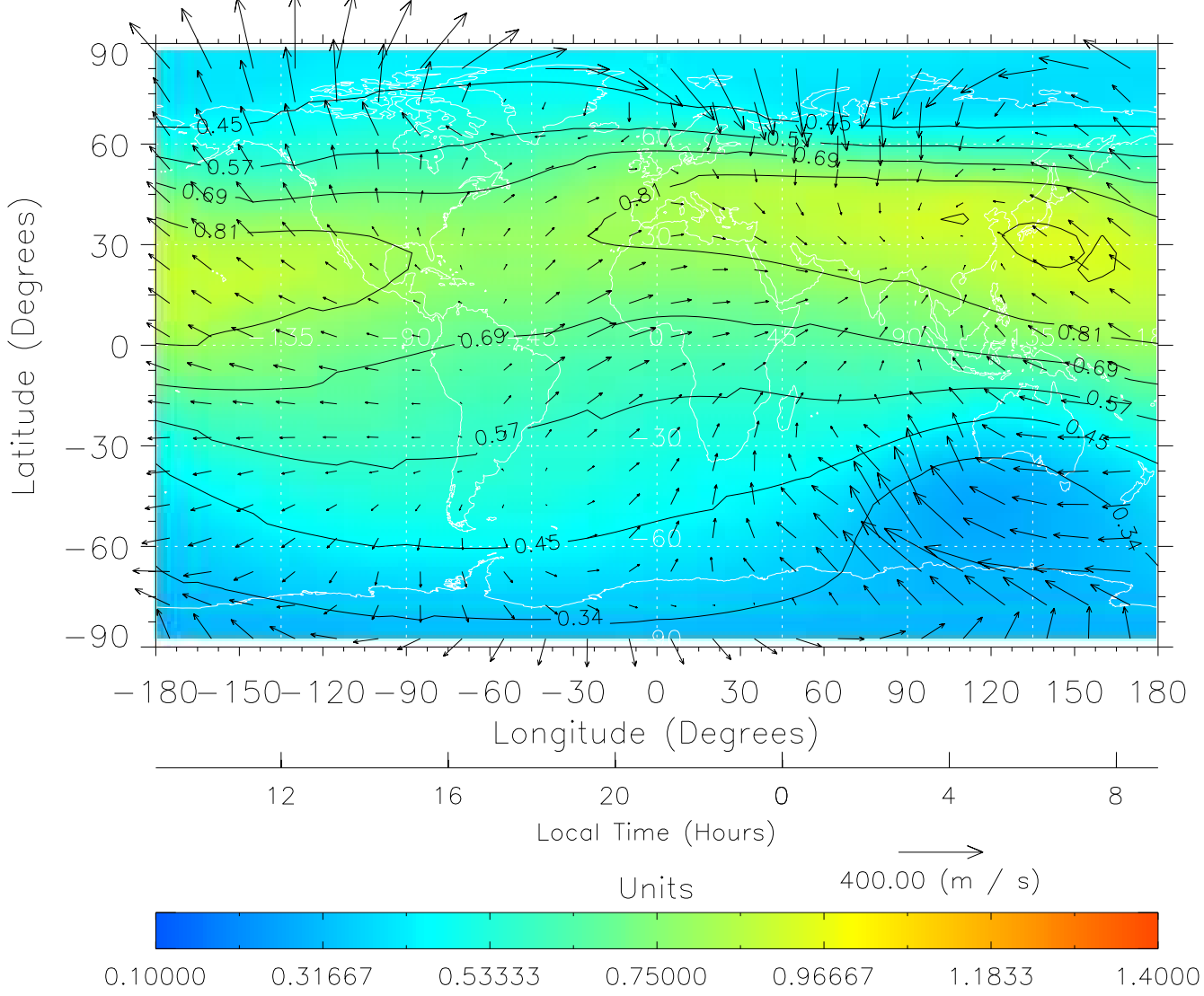


Created: Thu Mar 10 14:25:32 2005

From: /home/tgcm/histories/secondary/OctoberNovember2003/OctoberNovember2003_v1/323.nc

TIME-GCM MAP $\Sigma O/N_2$ with Neutral Wind vectors

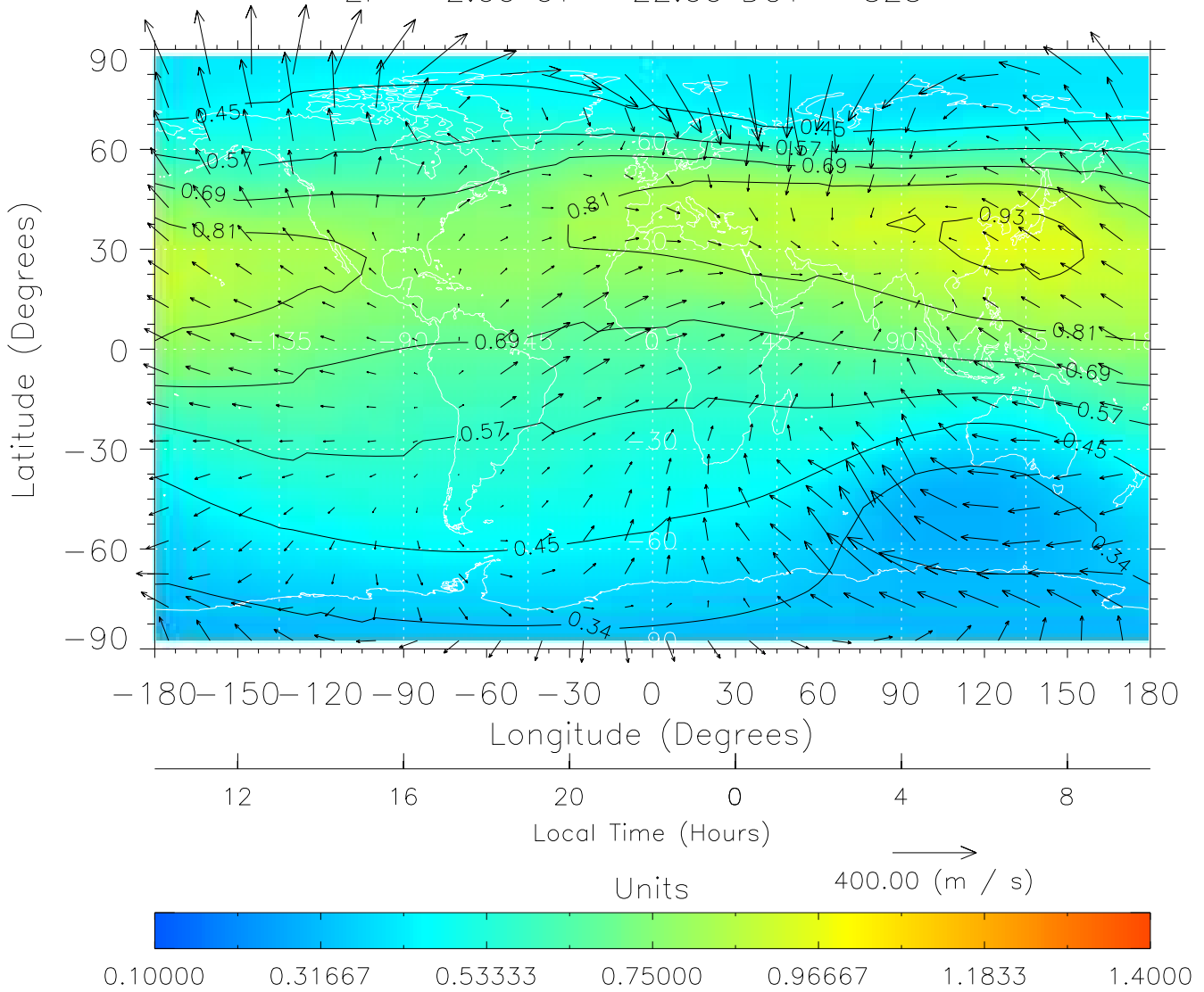
ZP = 2.00 UT = 21.00 DOY = 323



Created: Thu Mar 10 14:25:32 2005

From: /home/tgcm/histories/secondary/OctoberNovember2003/OctoberNovember2003_v1/323.nc

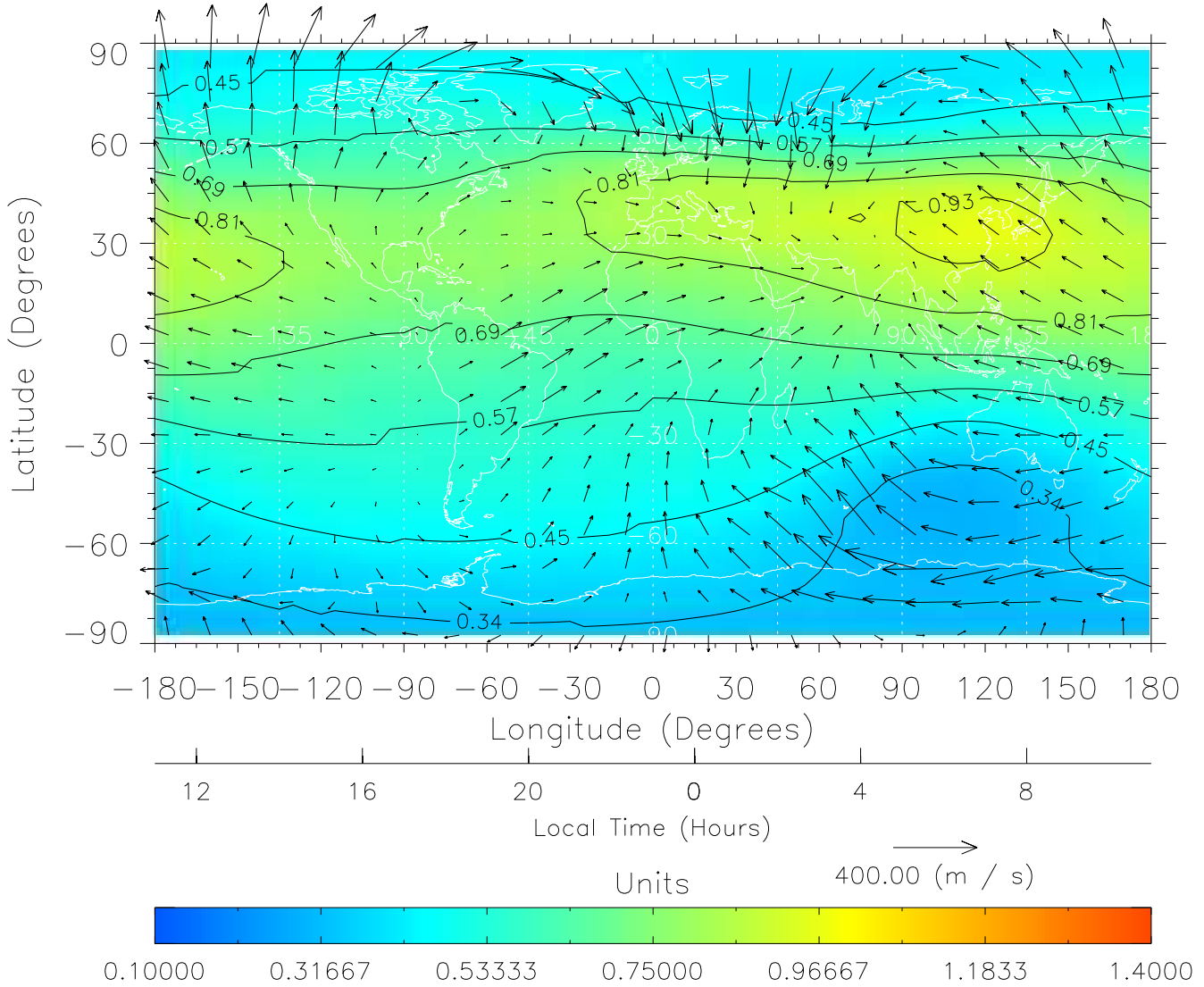
TIME-GCM MAP $\Sigma O/N_2$ with Neutral Wind vectors
ZP = 2.00 UT = 22.00 DOY = 323



Created: Thu Mar 10 14:25:33 2005

From: /home/tgcm/histories/secondary/OctoberNovember2003/OctoberNovember2003_v1/323.nc

TIME-GCM MAP $\Sigma O/N_2$ with Neutral Wind vectors
ZP = 2.00 UT = 23.00 DOY = 323



Created: Thu Mar 10 14:25:33 2005

From: /home/tgcm/histories/secondary/OctoberNovember2003/OctoberNovember2003_v1/323.nc