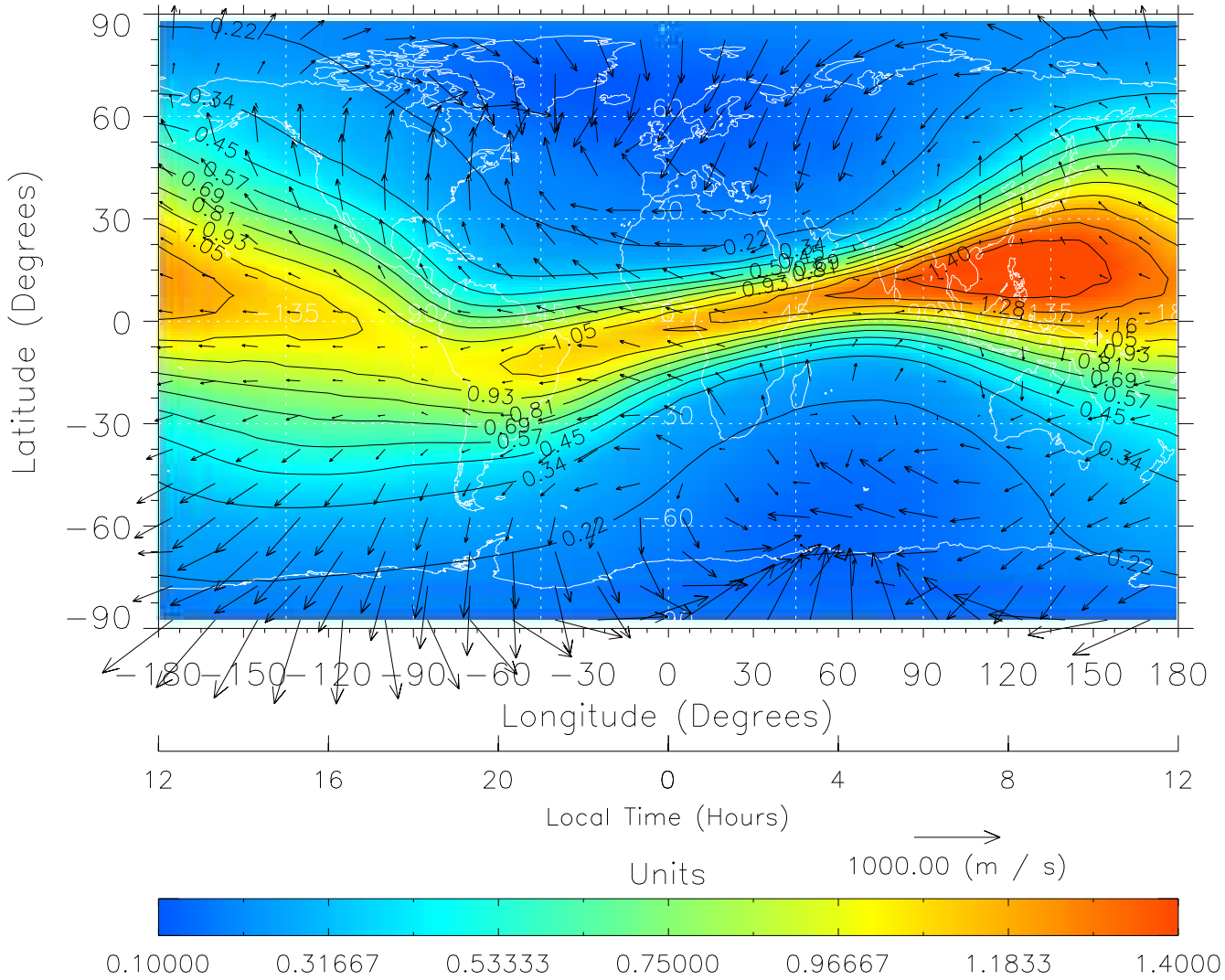


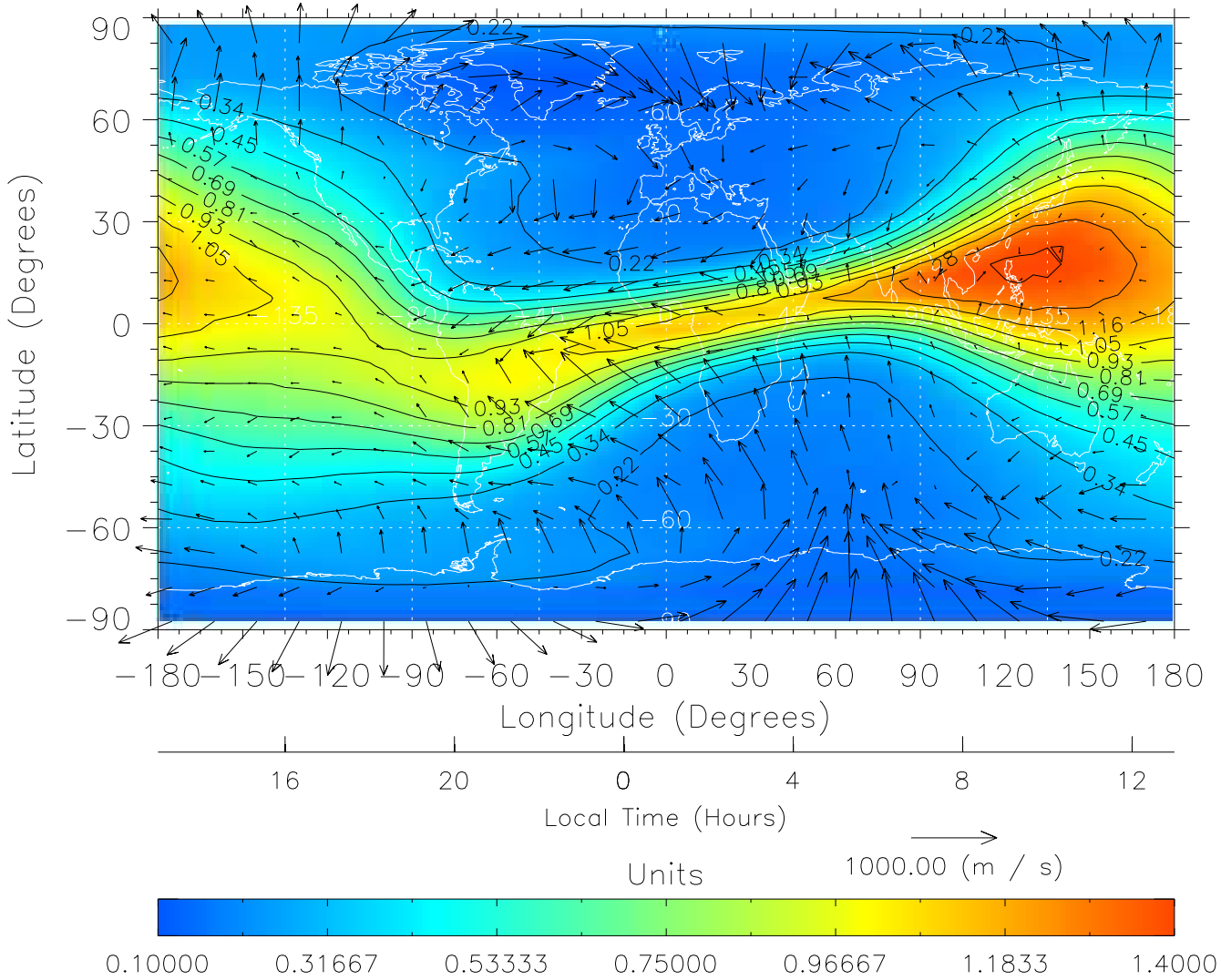
TIME-GCM MAP $\Sigma O/N_2$ with Neutral Wind vectors
ZP = 2.00 UT = 0.00 DOY = 304



Created: Thu Mar 10 14:23:03 2005

From: /home/tgcm/histories/secondary/OctoberNovember2003/OctoberNovember2003_v1/304.nc

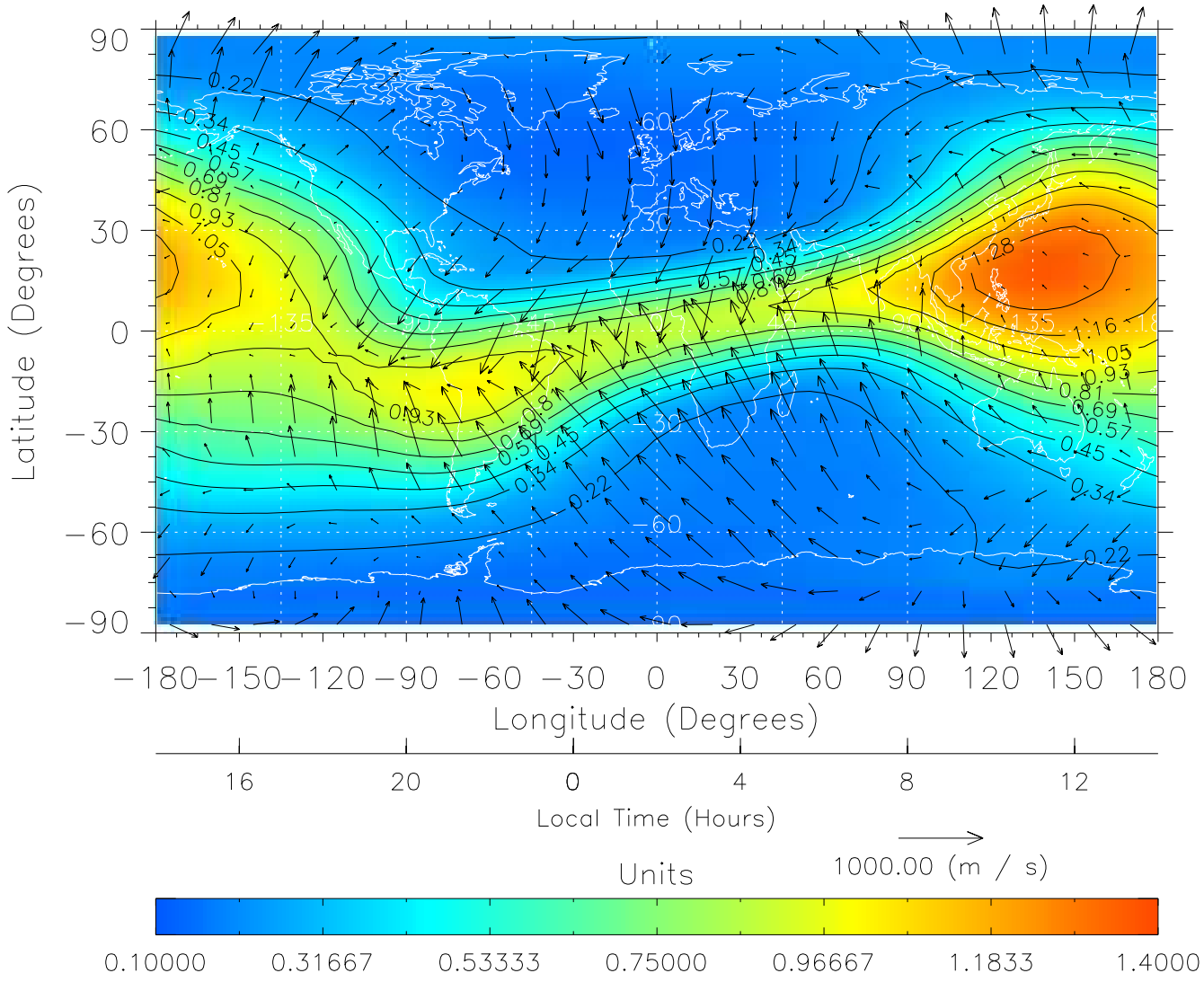
TIME-GCM MAP $\Sigma O/N_2$ with Neutral Wind vectors
ZP = 2.00 UT = 1.00 DOY = 304



Created: Thu Mar 10 14:23:03 2005

From: /home/tgcm/histories/secondary/OctoberNovember2003/OctoberNovember2003_v1/304.nc

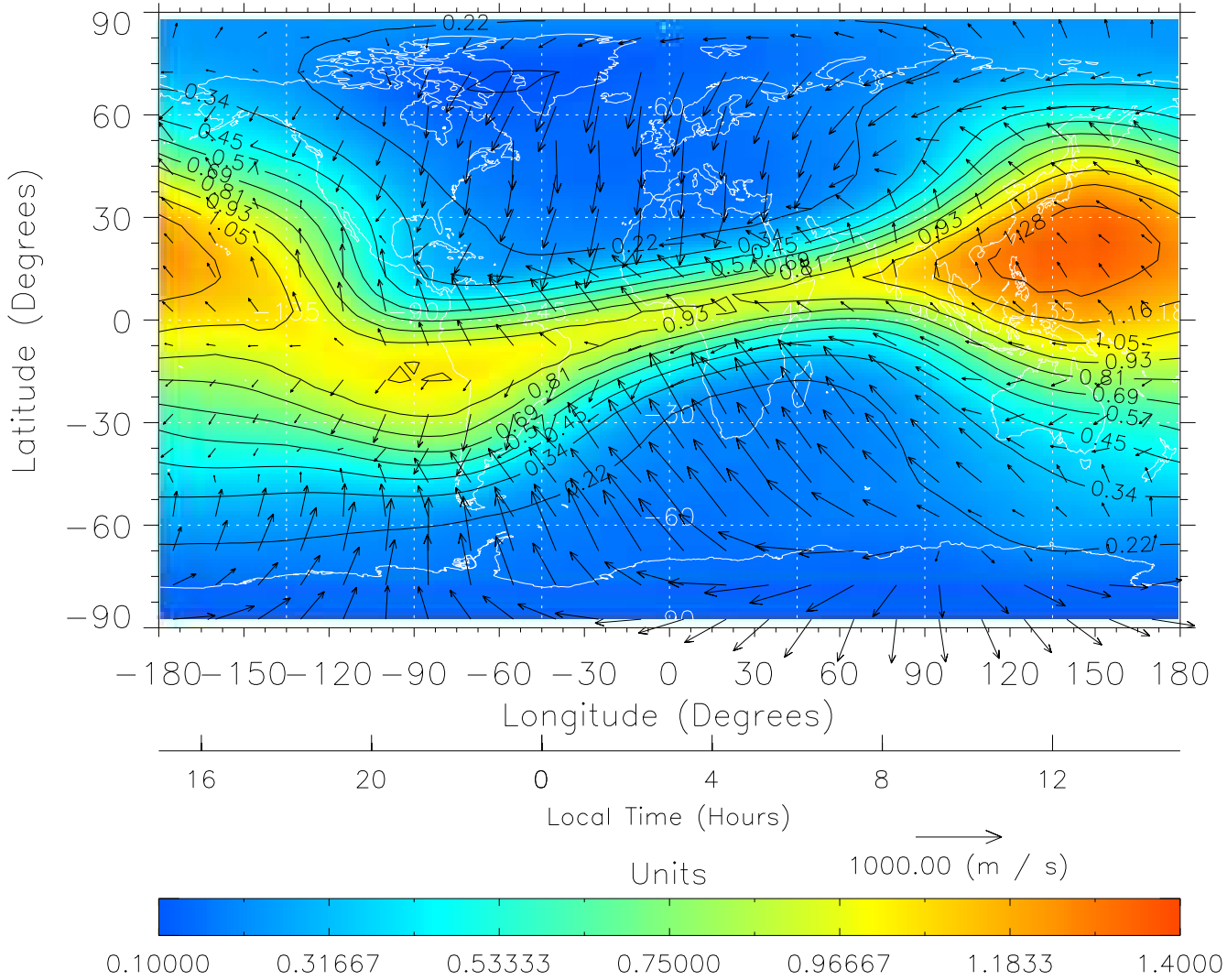
TIME-GCM MAP $\Sigma O/N_2$ with Neutral Wind vectors
ZP = 2.00 UT = 2.00 DOY = 304



Created: Thu Mar 10 14:23:04 2005

From: /home/tgcm/histories/secondary/OctoberNovember2003/OctoberNovember2003_v1/304.nc

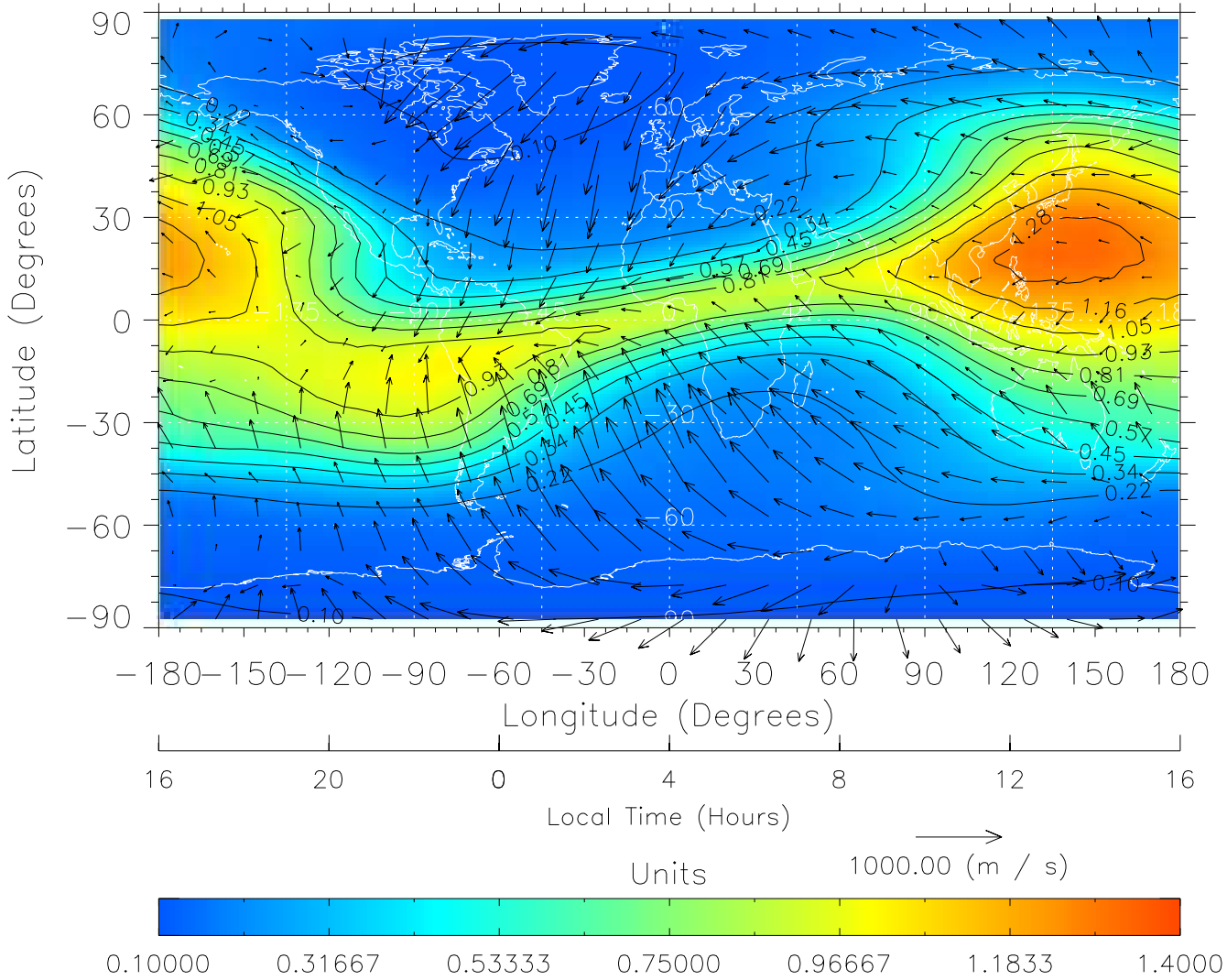
TIME-GCM MAP $\Sigma O/N_2$ with Neutral Wind vectors
ZP = 2.00 UT = 3.00 DOY = 304



Created: Thu Mar 10 14:23:04 2005

From: /home/tgcm/histories/secondary/OctoberNovember2003/OctoberNovember2003_v1/304.nc

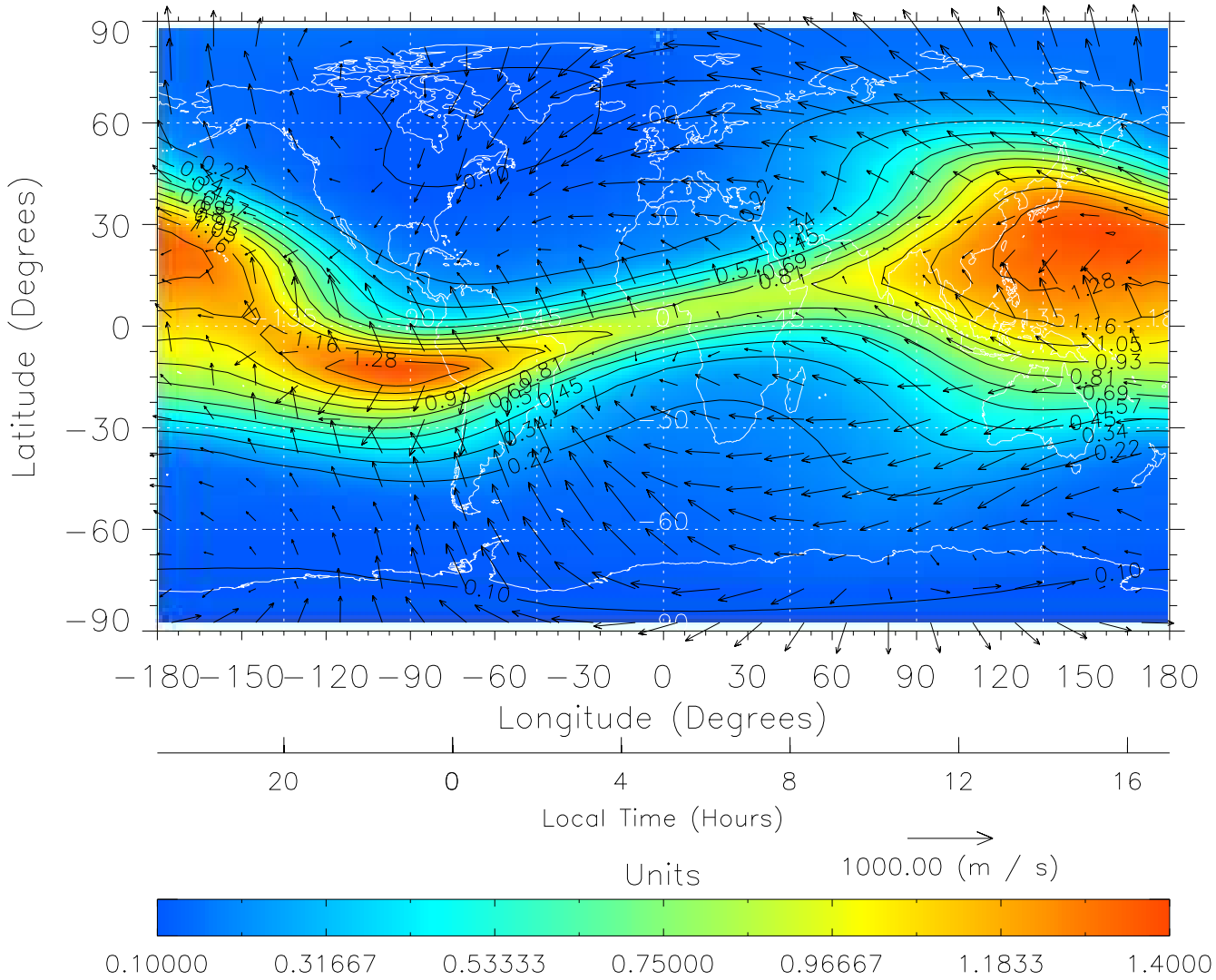
TIME-GCM MAP $\Sigma O/N_2$ with Neutral Wind vectors
ZP = 2.00 UT = 4.00 DOY = 304



Created: Thu Mar 10 14:23:05 2005

From: /home/tgcm/histories/secondary/OctoberNovember2003/OctoberNovember2003_v1/304.nc

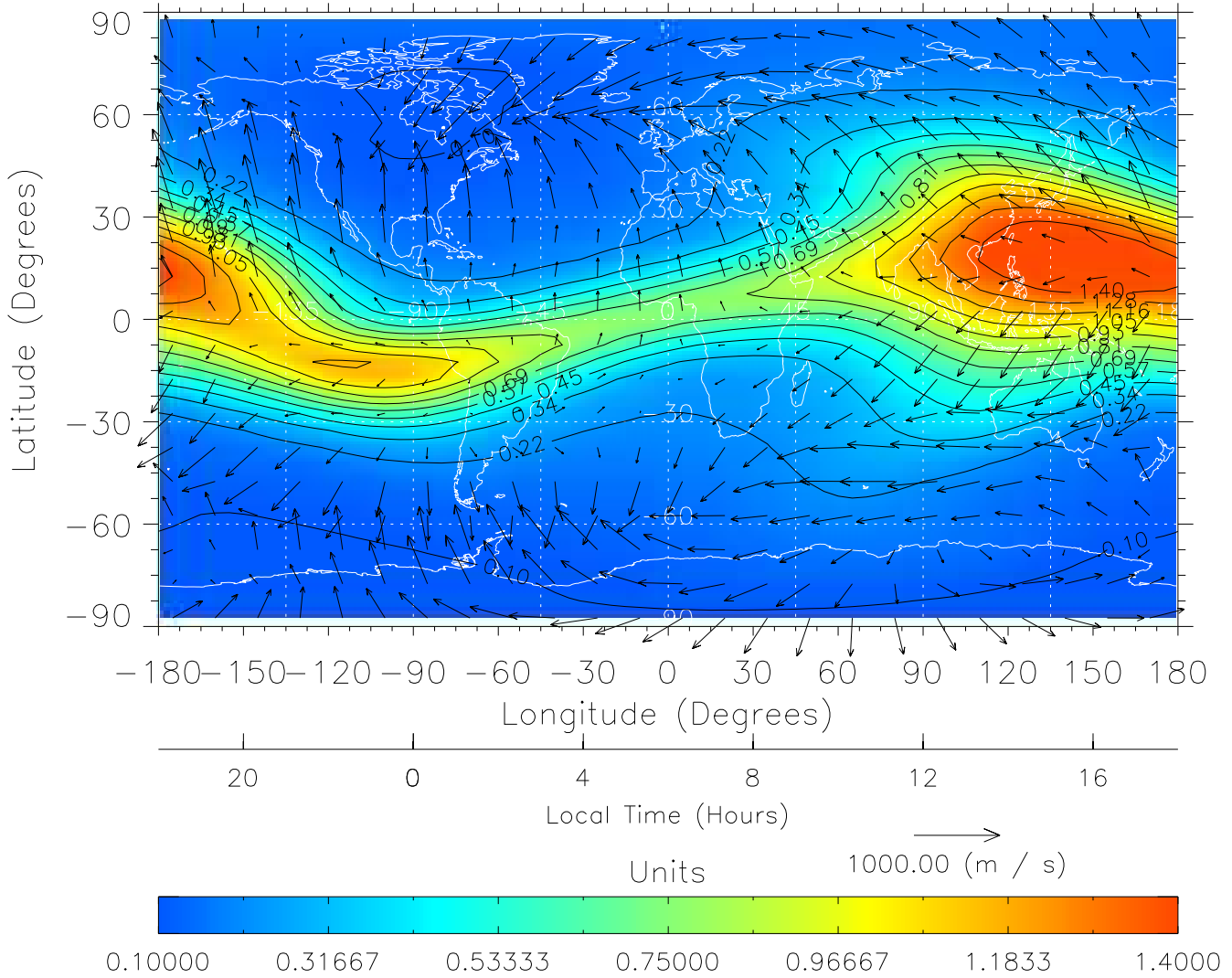
TIME-GCM MAP $\Sigma O/N_2$ with Neutral Wind vectors
ZP = 2.00 UT = 5.00 DOY = 304



Created: Thu Mar 10 14:23:05 2005

From: /home/tgcm/histories/secondary/OctoberNovember2003/OctoberNovember2003_v1/304.nc

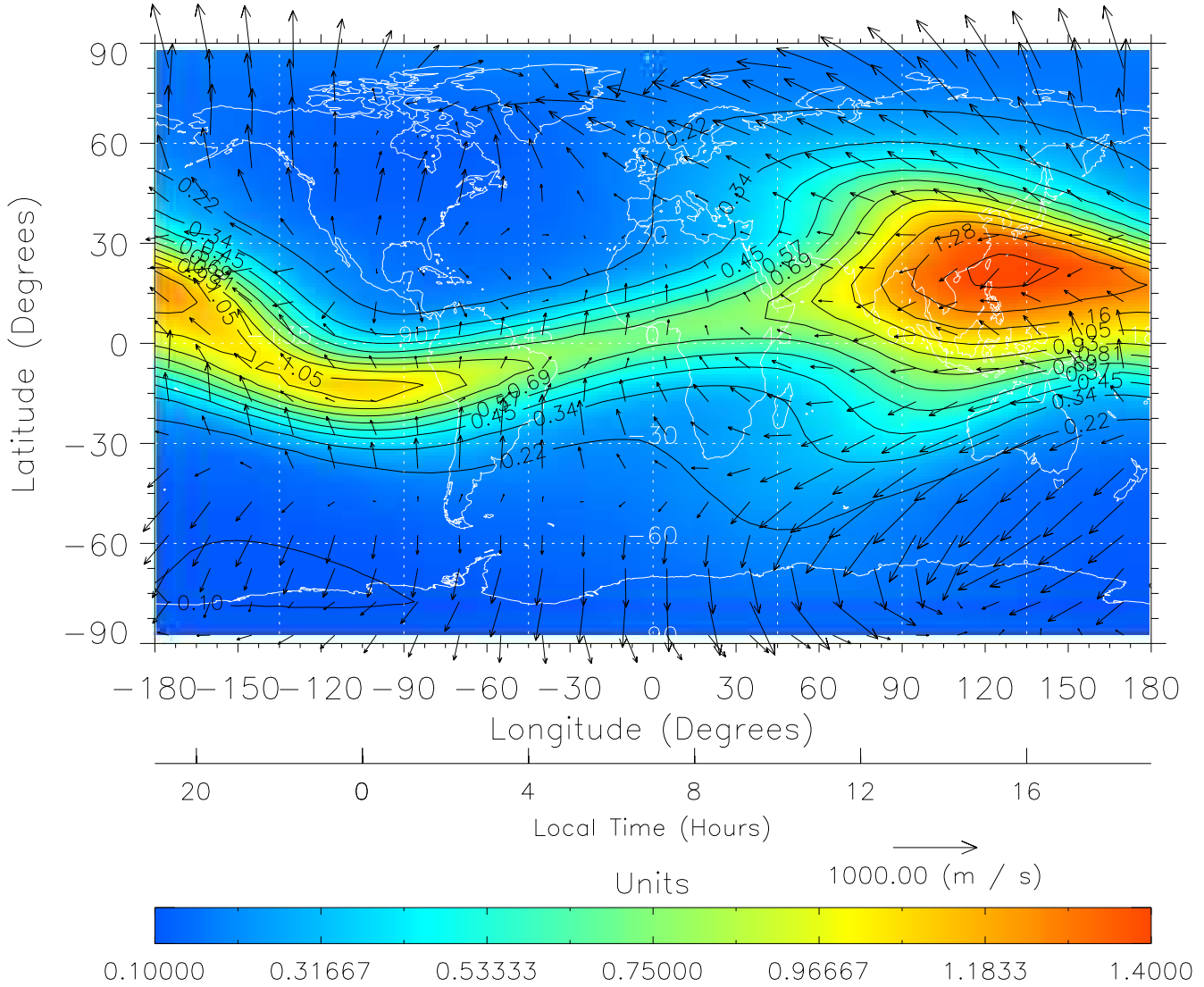
TIME-GCM MAP $\Sigma O/N_2$ with Neutral Wind vectors
ZP = 2.00 UT = 6.00 DOY = 304



Created: Thu Mar 10 14:23:06 2005

From: /home/tgcm/histories/secondary/OctoberNovember2003/OctoberNovember2003_v1/304.nc

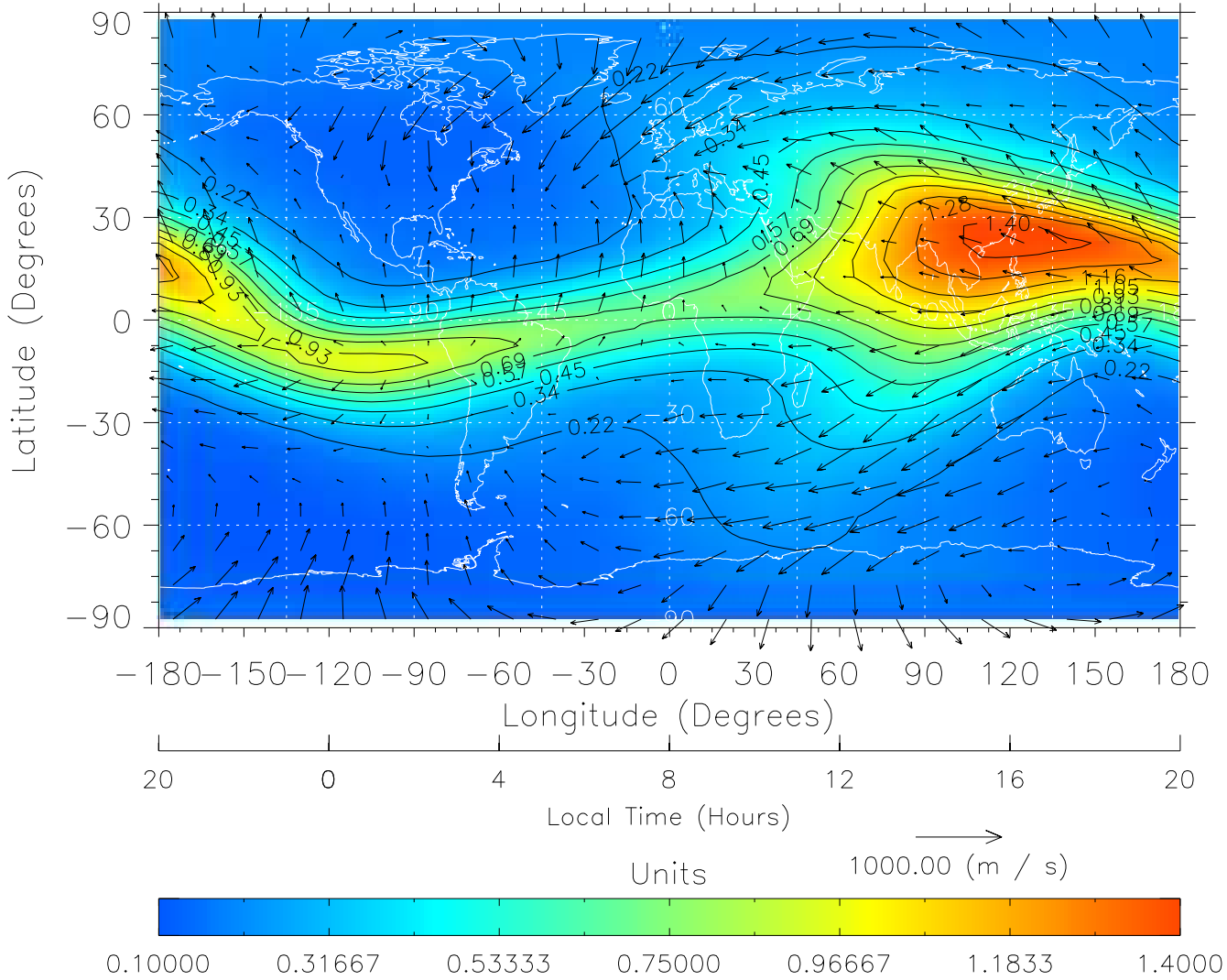
TIME-GCM MAP $\Sigma O/N_2$ with Neutral Wind vectors
ZP = 2.00 UT = 7.00 DOY = 304



Created: Thu Mar 10 14:23:06 2005

From: /home/tgcm/histories/secondary/OctoberNovember2003/OctoberNovember2003_v1/304.nc

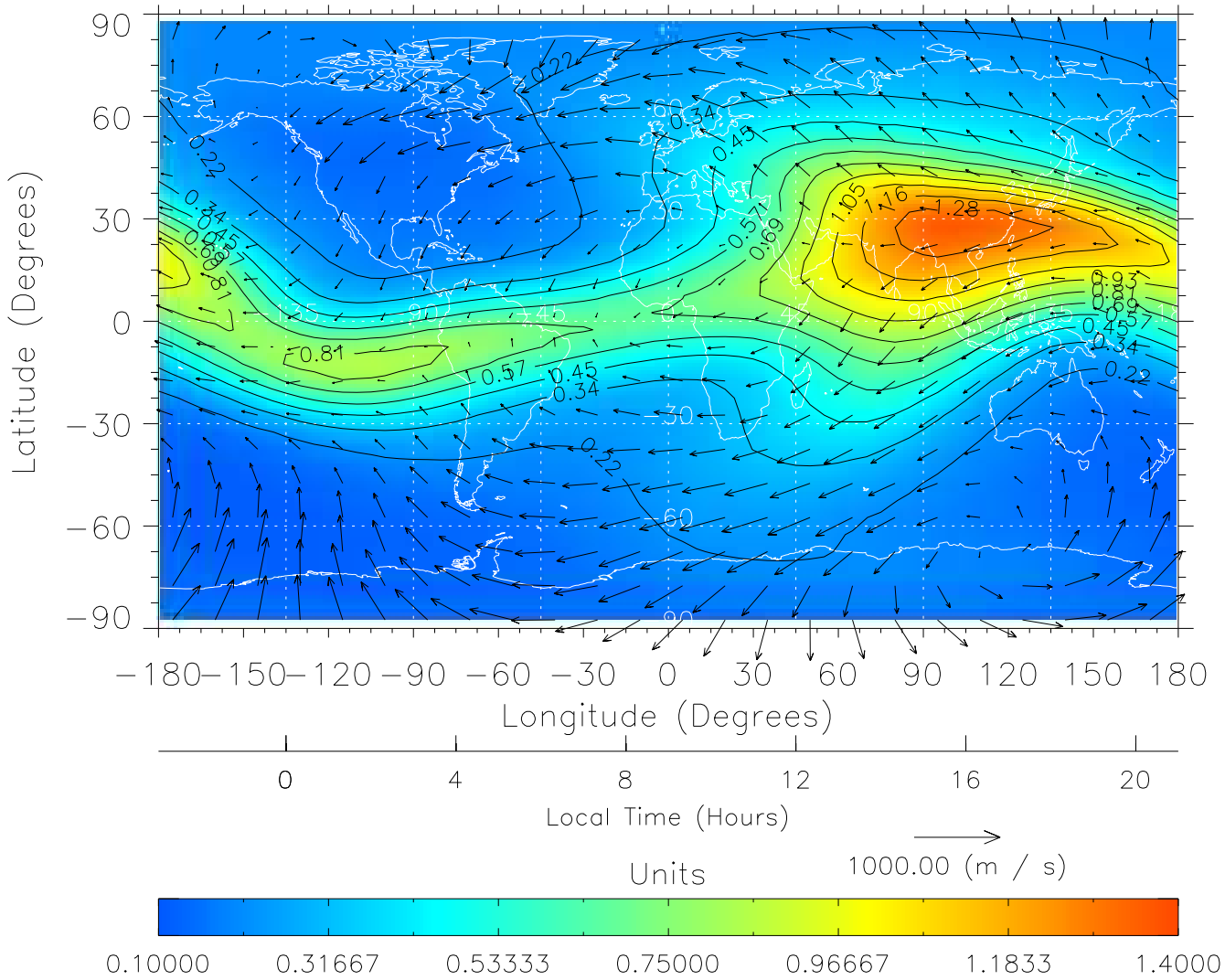
TIME-GCM MAP $\Sigma O/N_2$ with Neutral Wind vectors
ZP = 2.00 UT = 8.00 DOY = 304



Created: Thu Mar 10 14:23:07 2005

From: /home/tgcm/histories/secondary/OctoberNovember2003/OctoberNovember2003_v1/304.nc

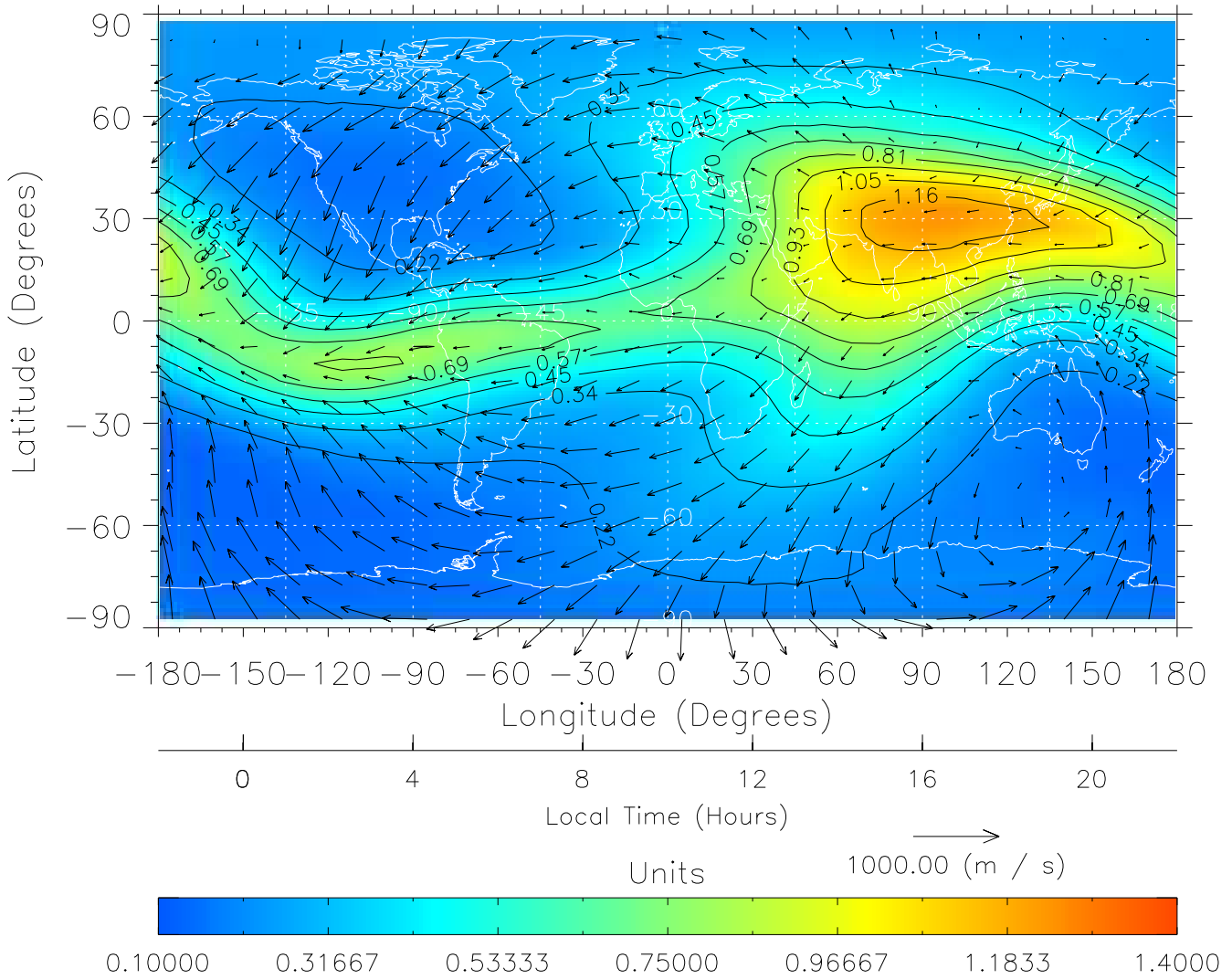
TIME-GCM MAP $\Sigma O/N_2$ with Neutral Wind vectors
ZP = 2.00 UT = 9.00 DOY = 304



Created: Thu Mar 10 14:23:08 2005

From: /home/tgcm/histories/secondary/OctoberNovember2003/OctoberNovember2003_v1/304.nc

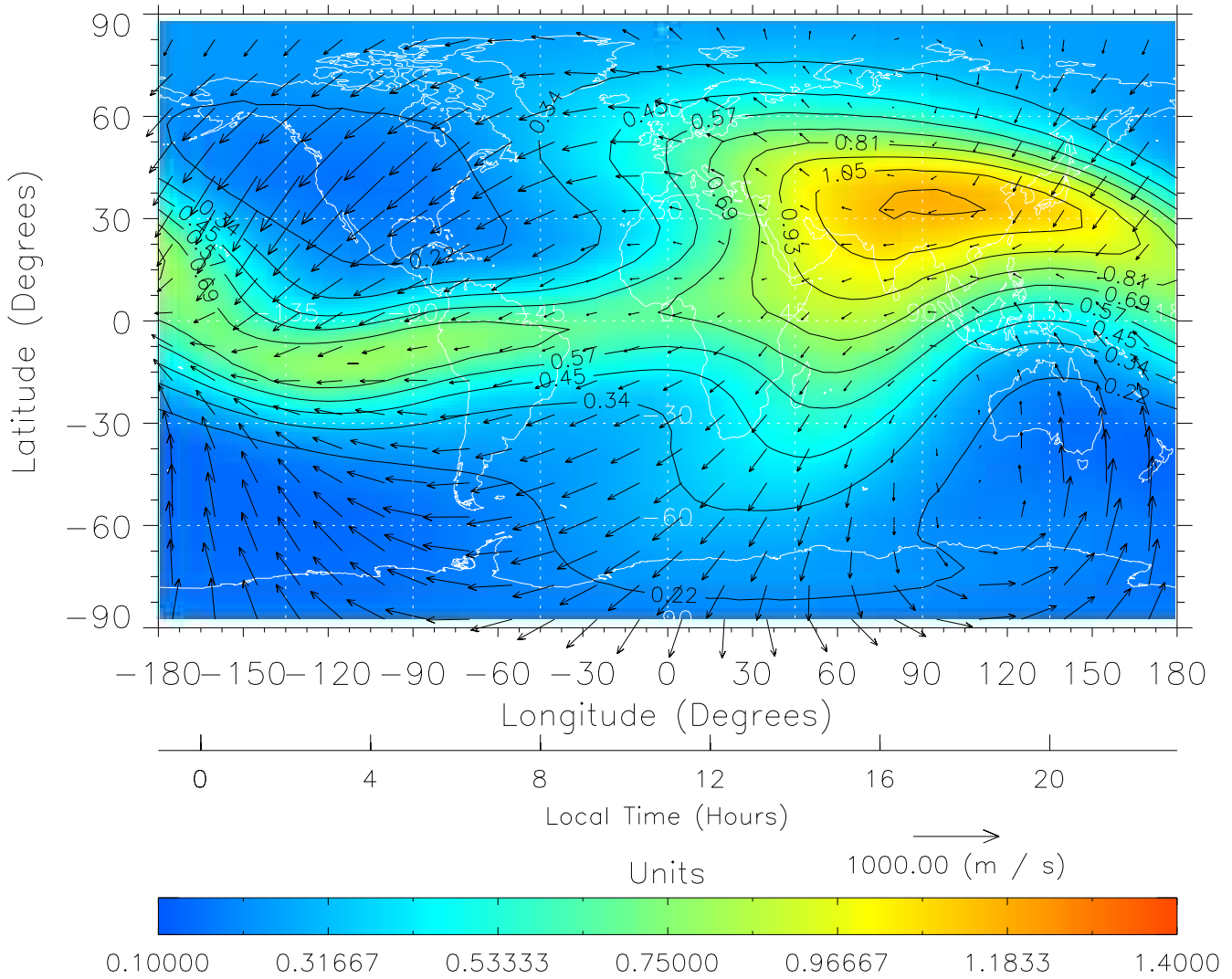
TIME-GCM MAP $\Sigma O/N_2$ with Neutral Wind vectors
ZP = 2.00 UT = 10.00 DOY = 304



Created: Thu Mar 10 14:23:08 2005

From: /home/tgcm/histories/secondary/OctoberNovember2003/OctoberNovember2003_v1/304.nc

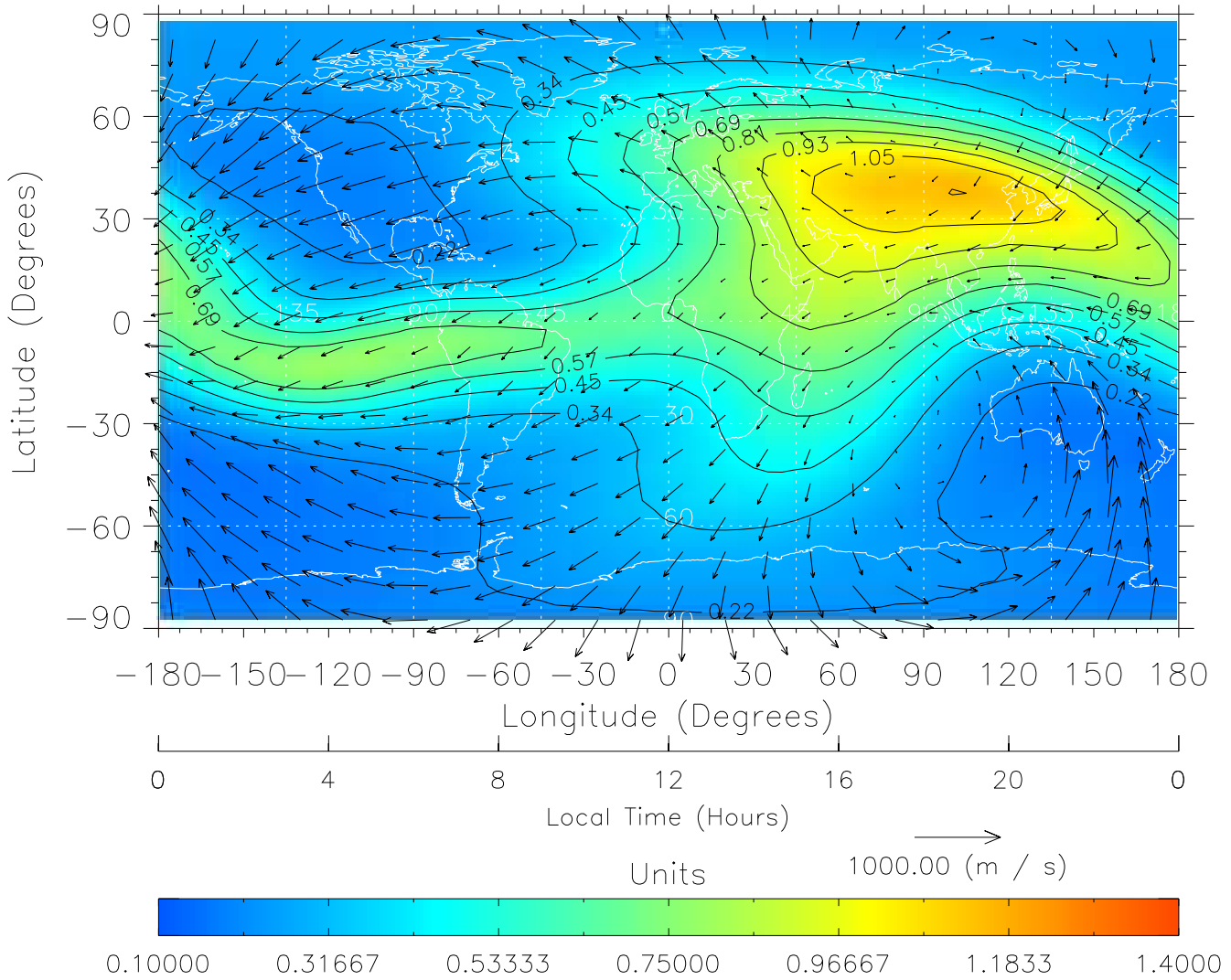
TIME-GCM MAP $\Sigma O/N_2$ with Neutral Wind vectors
ZP = 2.00 UT = 11.00 DOY = 304



Created: Thu Mar 10 14:23:09 2005

From: /home/tgcm/histories/secondary/OctoberNovember2003/OctoberNovember2003_v1/304.nc

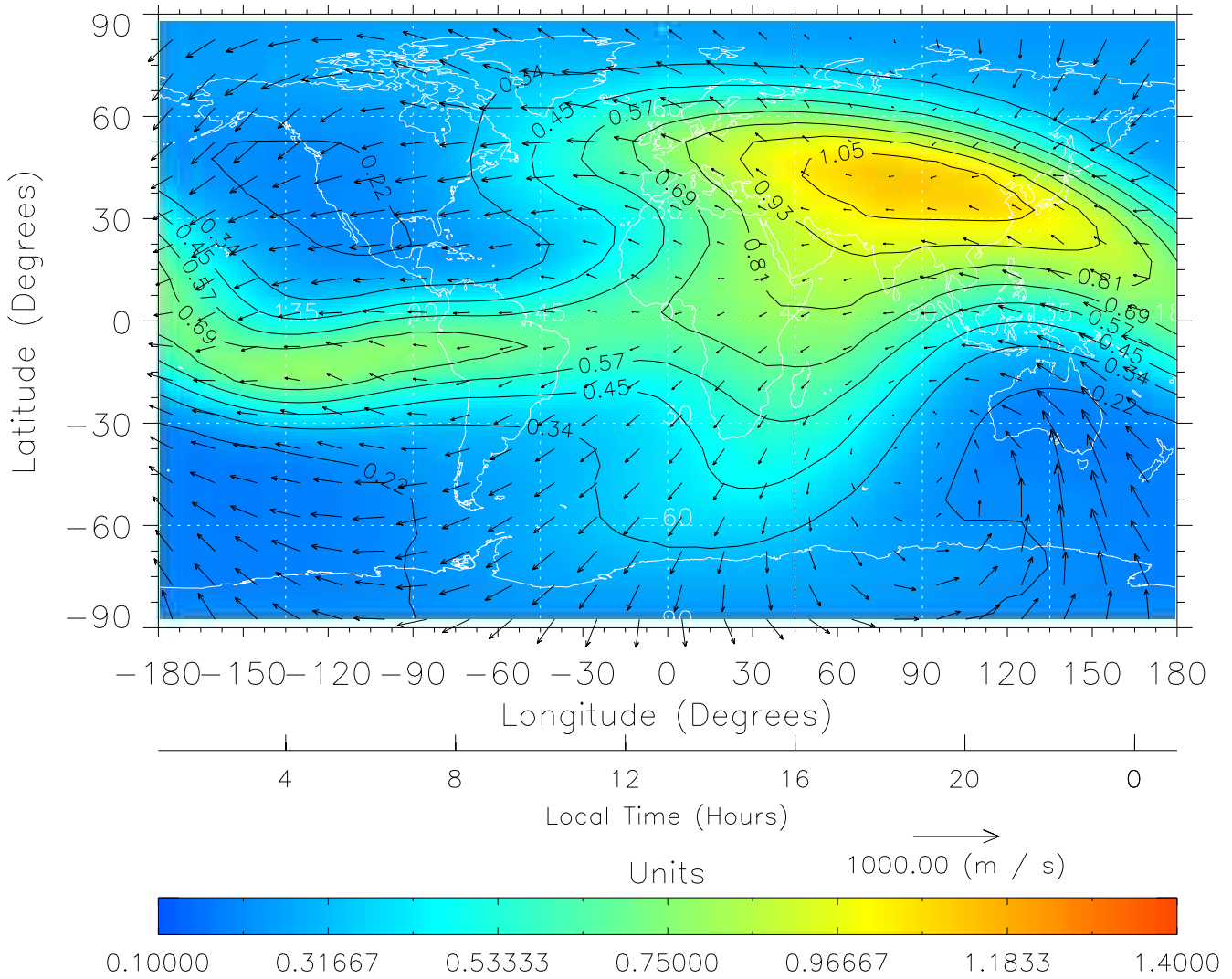
TIME-GCM MAP $\Sigma O/N_2$ with Neutral Wind vectors
ZP = 2.00 UT = 12.00 DOY = 304



Created: Thu Mar 10 14:23:09 2005

From: /home/tgcm/histories/secondary/OctoberNovember2003/OctoberNovember2003_v1/304.nc

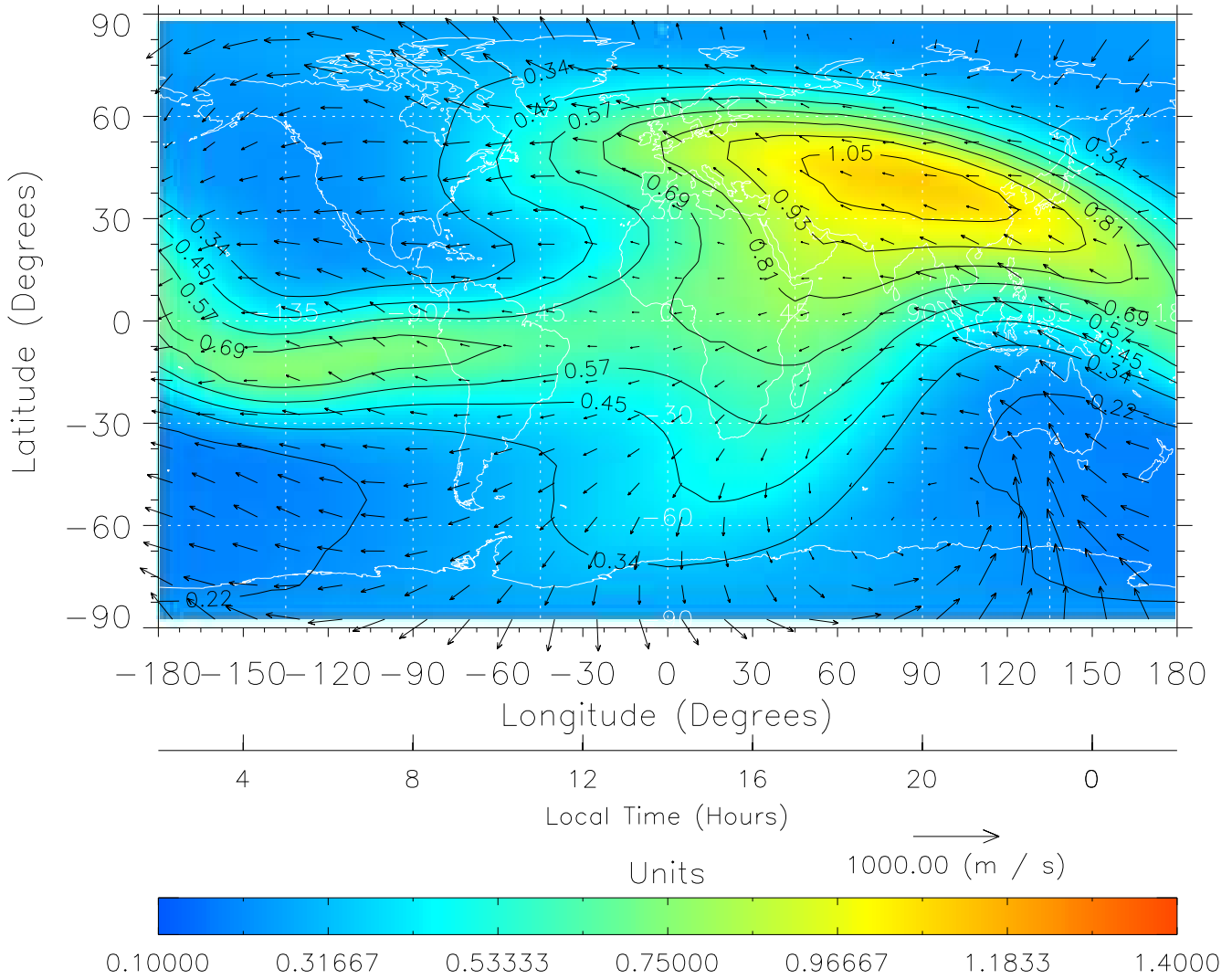
TIME-GCM MAP $\Sigma O/N_2$ with Neutral Wind vectors
ZP = 2.00 UT = 13.00 DOY = 304



Created: Thu Mar 10 14:23:10 2005

From: /home/tgcm/histories/secondary/OctoberNovember2003/OctoberNovember2003_v1/304.nc

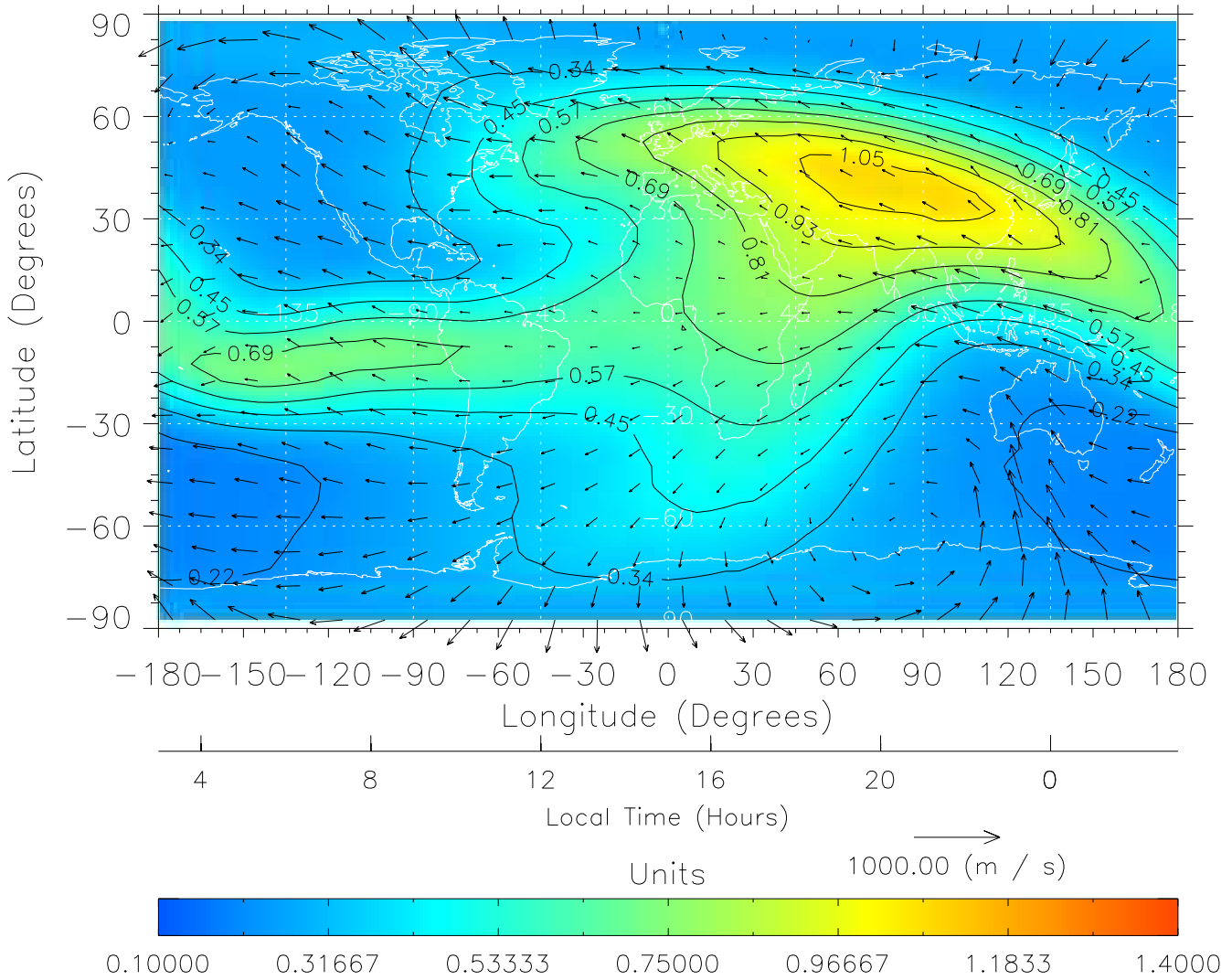
TIME-GCM MAP $\Sigma O/N_2$ with Neutral Wind vectors
ZP = 2.00 UT = 14.00 DOY = 304



Created: Thu Mar 10 14:23:10 2005

From: /home/tgcm/histories/secondary/OctoberNovember2003/OctoberNovember2003_v1/304.nc

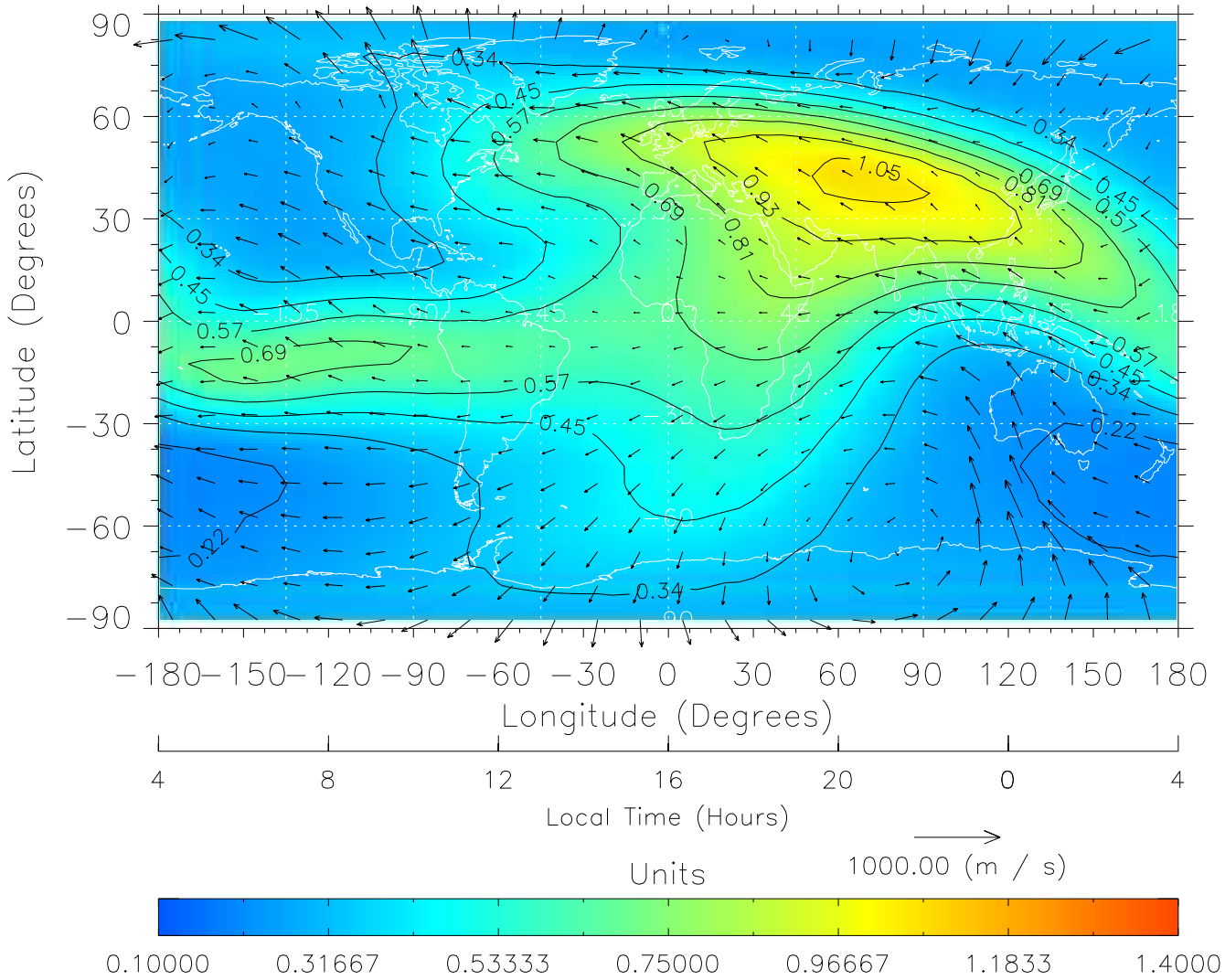
TIME-GCM MAP $\Sigma O/N_2$ with Neutral Wind vectors
ZP = 2.00 UT = 15.00 DOY = 304



Created: Thu Mar 10 14:23:11 2005

From: /home/tgcm/histories/secondary/OctoberNovember2003/OctoberNovember2003_v1/304.nc

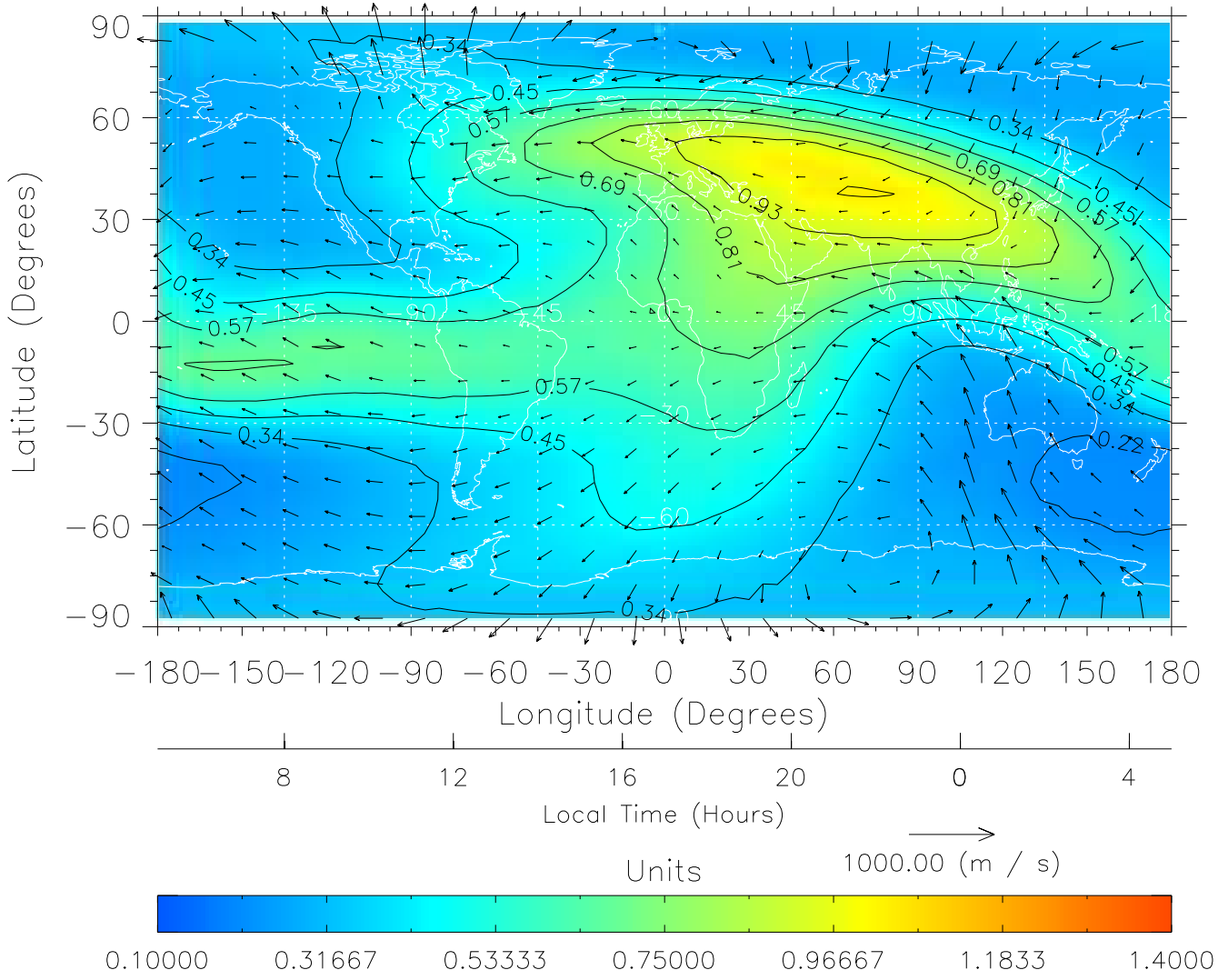
TIME-GCM MAP $\Sigma O/N_2$ with Neutral Wind vectors
ZP = 2.00 UT = 16.00 DOY = 304



Created: Thu Mar 10 14:23:11 2005

From: /home/tgcm/histories/secondary/OctoberNovember2003/OctoberNovember2003_v1/304.nc

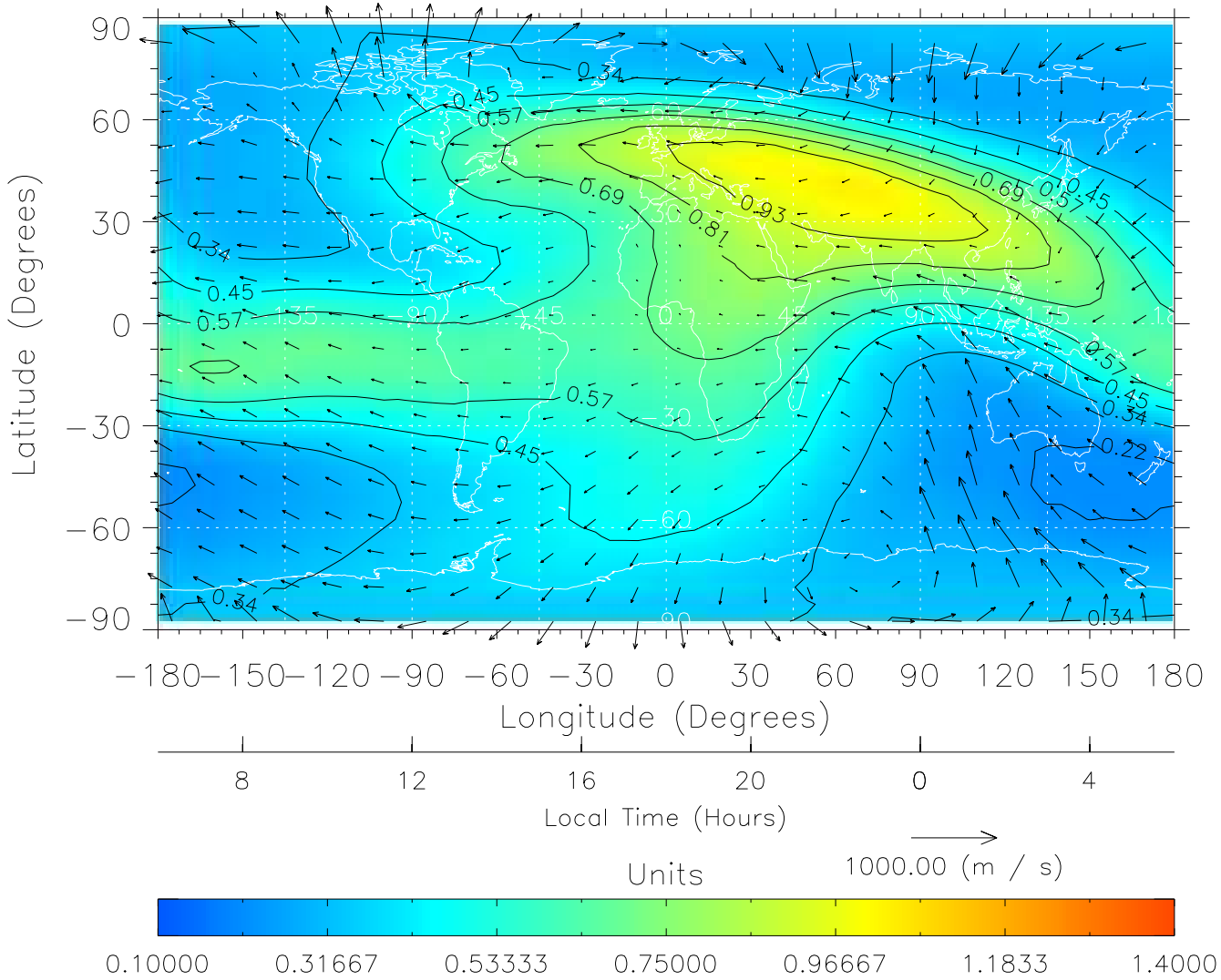
TIME-GCM MAP $\Sigma O/N_2$ with Neutral Wind vectors
ZP = 2.00 UT = 17.00 DOY = 304



Created: Thu Mar 10 14:23:12 2005

From: /home/tgcm/histories/secondary/OctoberNovember2003/OctoberNovember2003_v1/304.nc

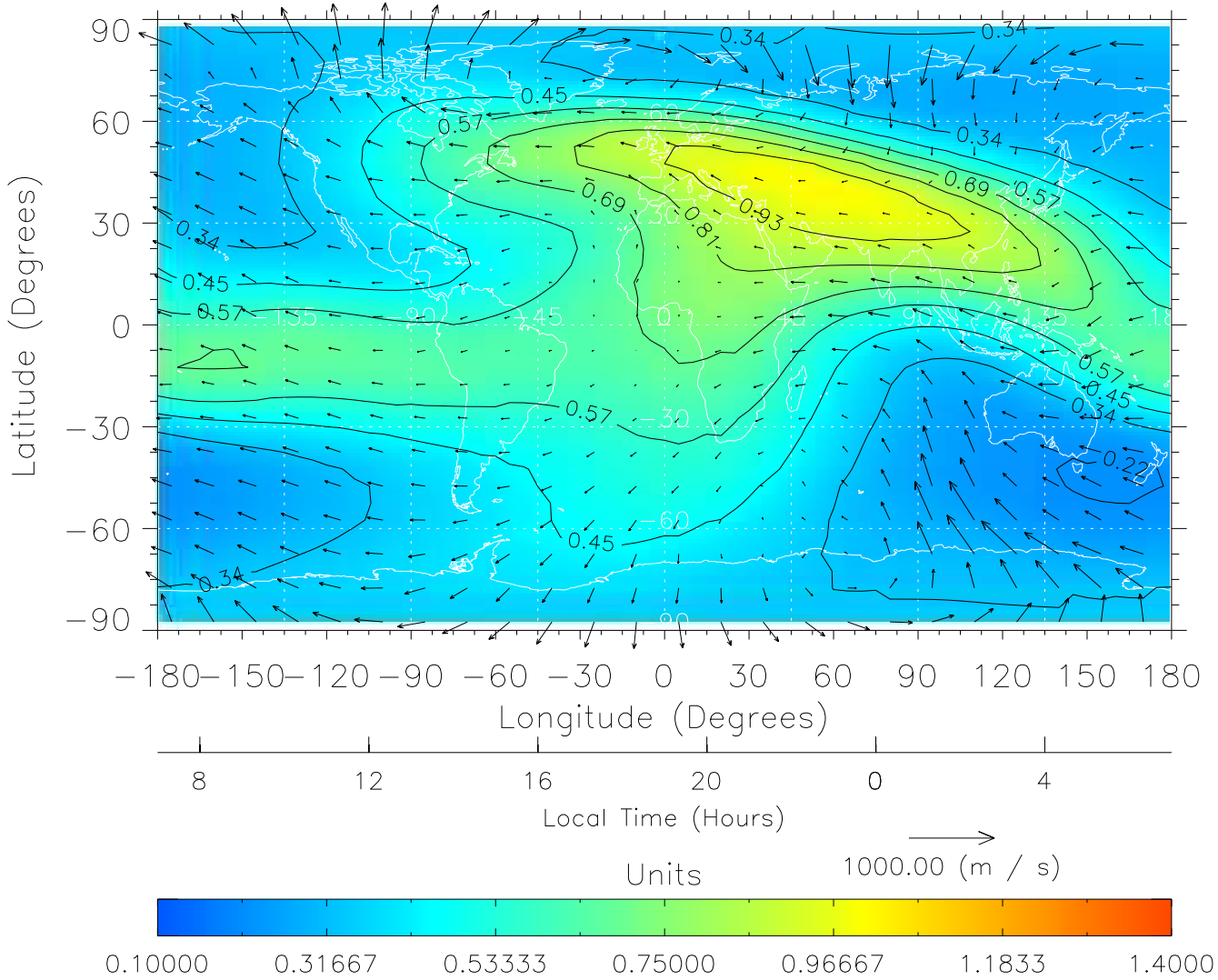
TIME-GCM MAP $\Sigma O/N_2$ with Neutral Wind vectors
ZP = 2.00 UT = 18.00 DOY = 304



Created: Thu Mar 10 14:23:12 2005

From: /home/tgcm/histories/secondary/OctoberNovember2003/OctoberNovember2003_v1/304.nc

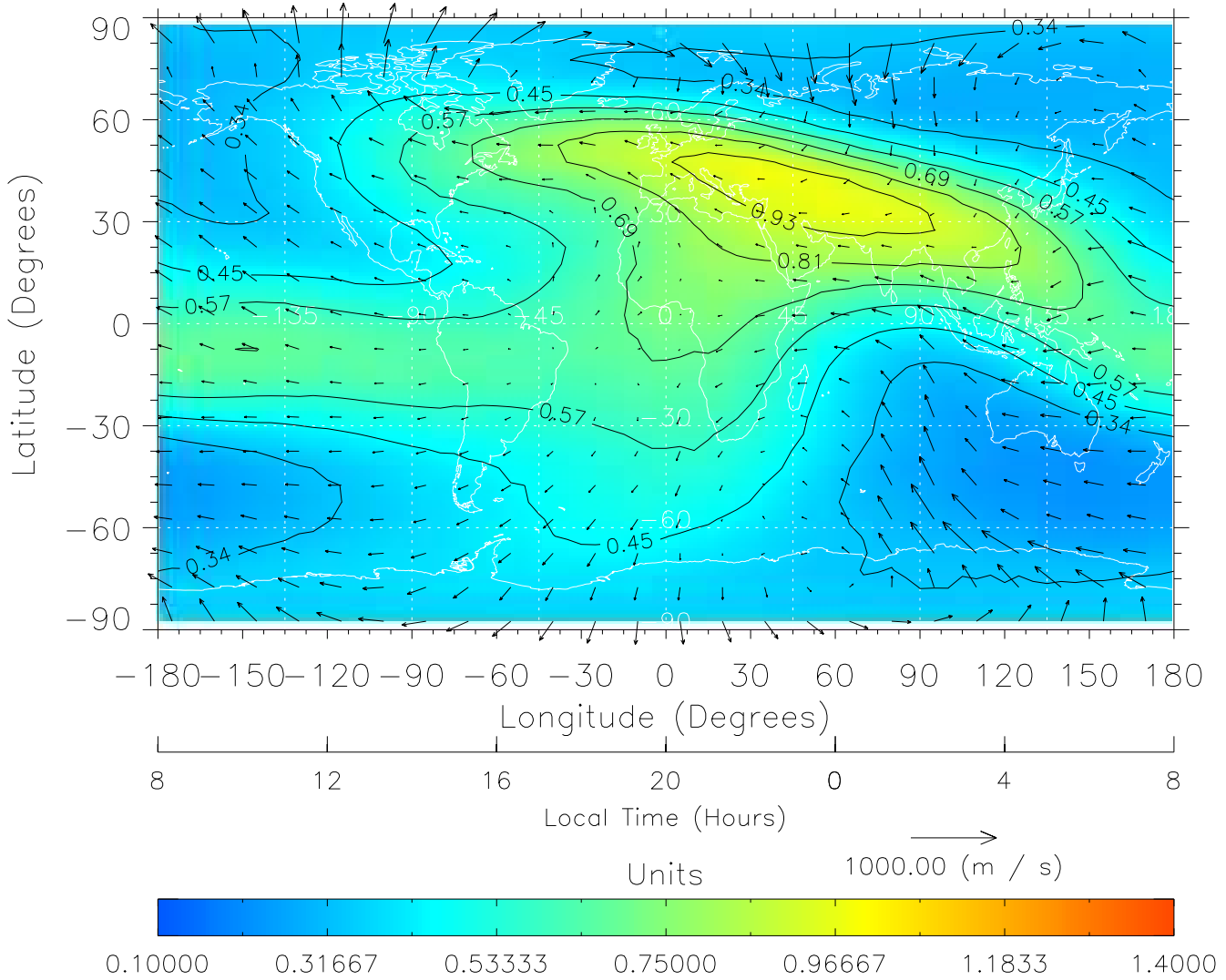
TIME-GCM MAP $\Sigma O/N_2$ with Neutral Wind vectors
ZP = 2.00 UT = 19.00 DOY = 304



Created: Thu Mar 10 14:23:13 2005

From: /home/tgcm/histories/secondary/OctoberNovember2003/OctoberNovember2003_v1/304.nc

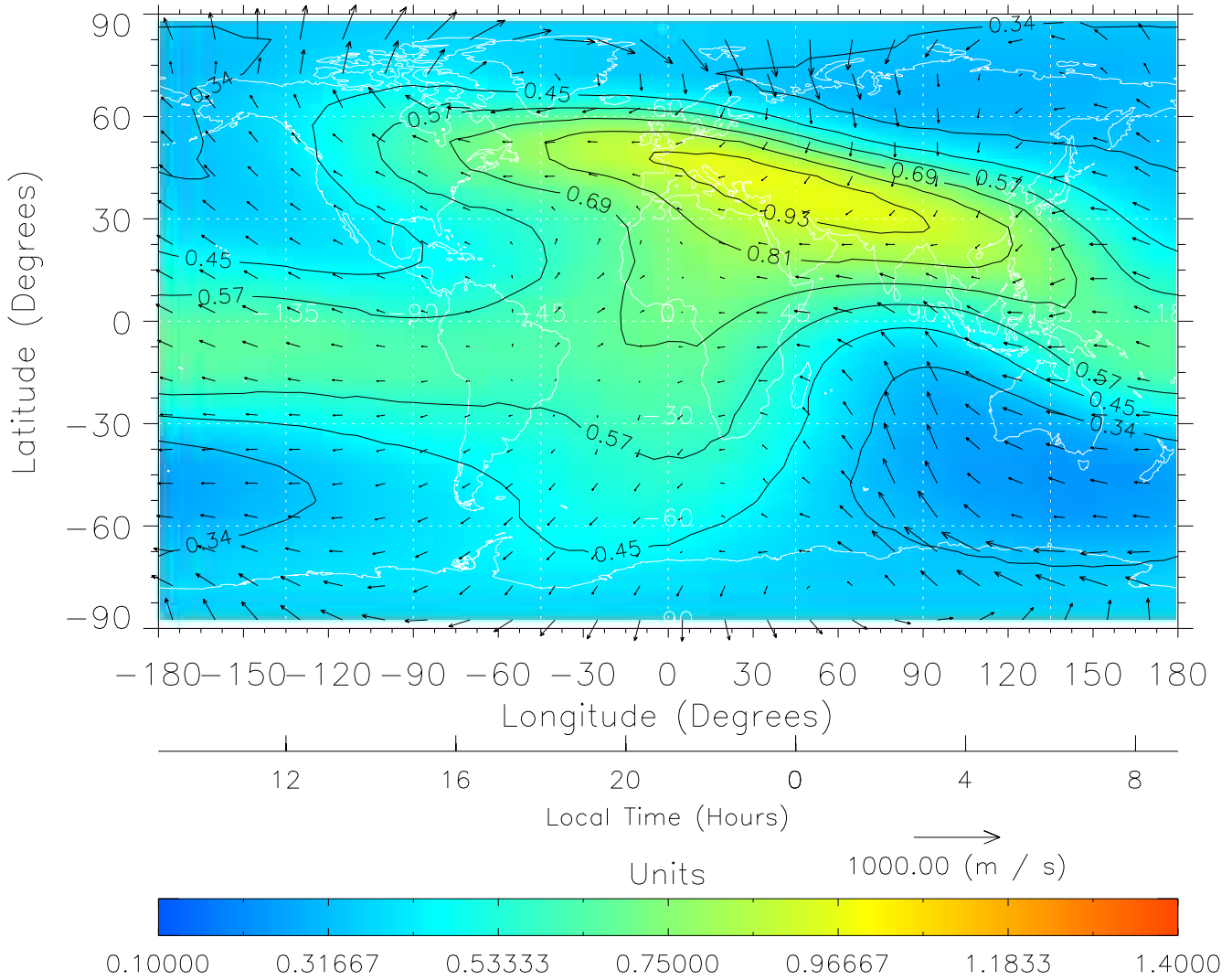
TIME-GCM MAP $\Sigma O/N_2$ with Neutral Wind vectors
ZP = 2.00 UT = 20.00 DOY = 304



Created: Thu Mar 10 14:23:14 2005

From: /home/tgcm/histories/secondary/OctoberNovember2003/OctoberNovember2003_v1/304.nc

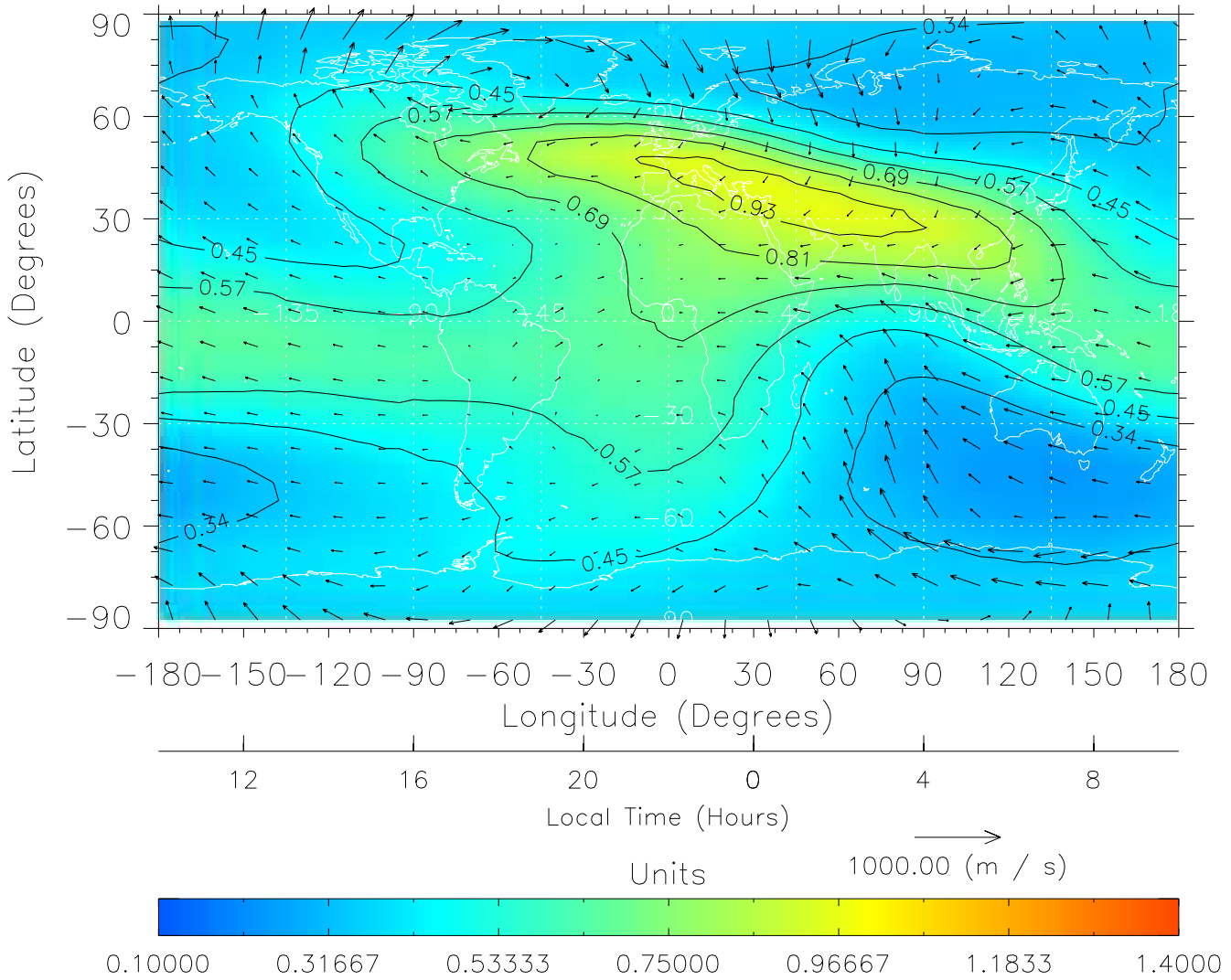
TIME-GCM MAP $\Sigma O/N_2$ with Neutral Wind vectors
ZP = 2.00 UT = 21.00 DOY = 304



Created: Thu Mar 10 14:23:14 2005

From: /home/tgcm/histories/secondary/OctoberNovember2003/OctoberNovember2003_v1/304.nc

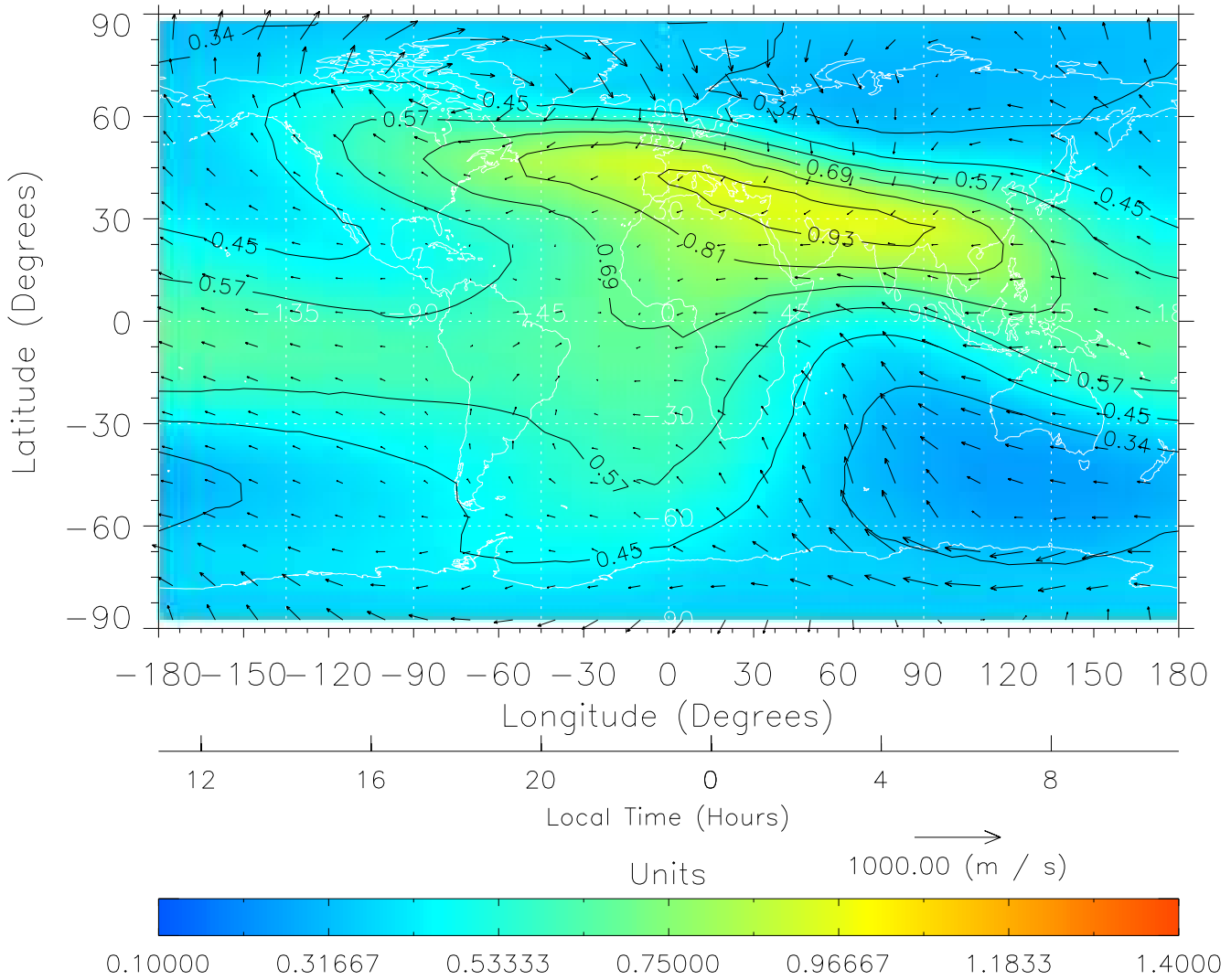
TIME-GCM MAP $\Sigma O/N_2$ with Neutral Wind vectors
ZP = 2.00 UT = 22.00 DOY = 304



Created: Thu Mar 10 14:23:15 2005

From: /home/tgcm/histories/secondary/OctoberNovember2003/OctoberNovember2003_v1/304.nc

TIME-GCM MAP $\Sigma O/N_2$ with Neutral Wind vectors
ZP = 2.00 UT = 23.00 DOY = 304



Created: Thu Mar 10 14:23:15 2005

From: /home/tgcm/histories/secondary/OctoberNovember2003/OctoberNovember2003_v1/304.nc