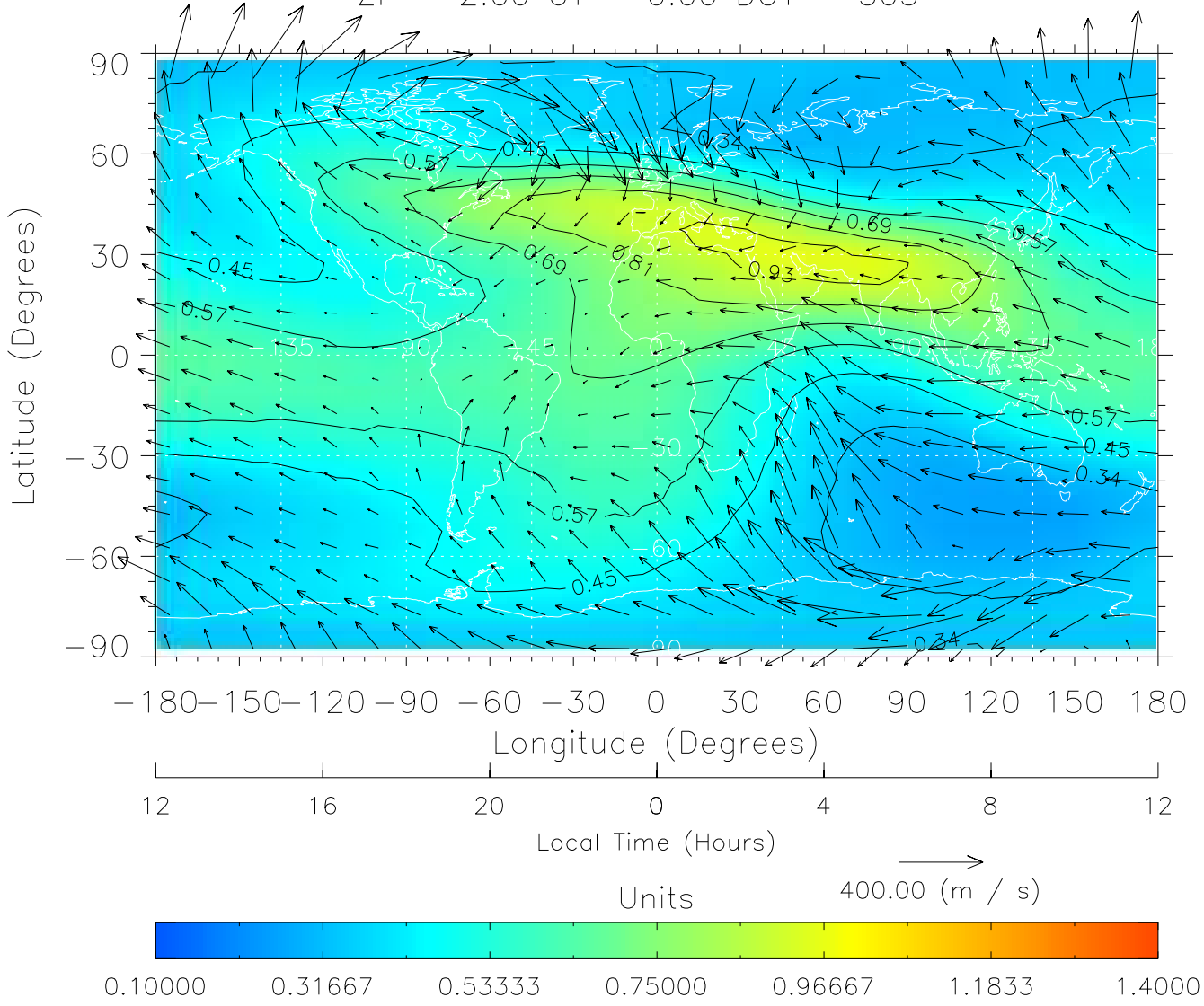


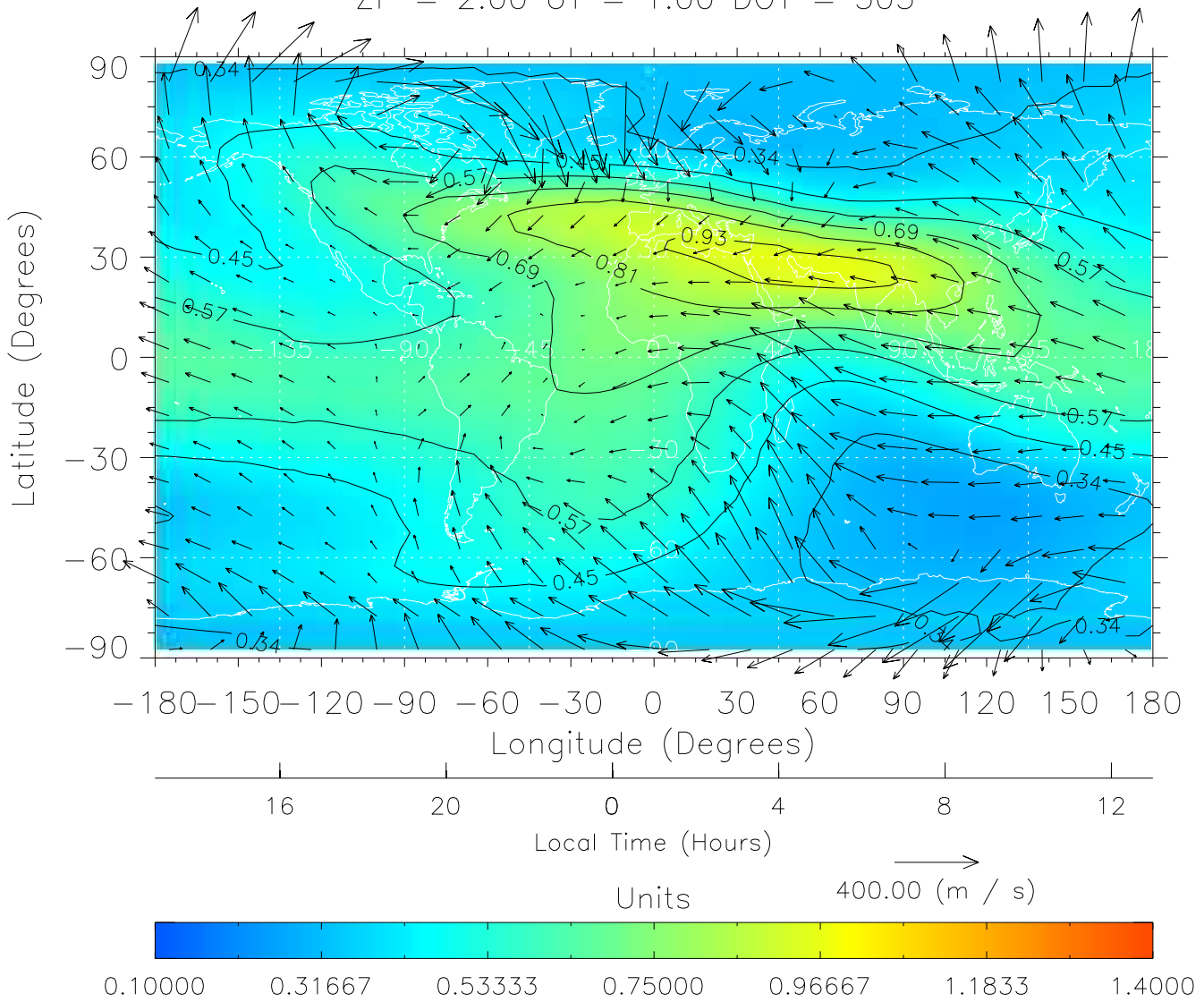
TIME-GCM MAP  $\Sigma O/N_2$  with Neutral Wind vectors  
ZP = 2.00 UT = 0.00 DOY = 305



Created: Thu Mar 10 14:24:13 2005

From: /home/tgcm/histories/secondary/OctoberNovember2003/OctoberNovember2003\_v1/305.nc

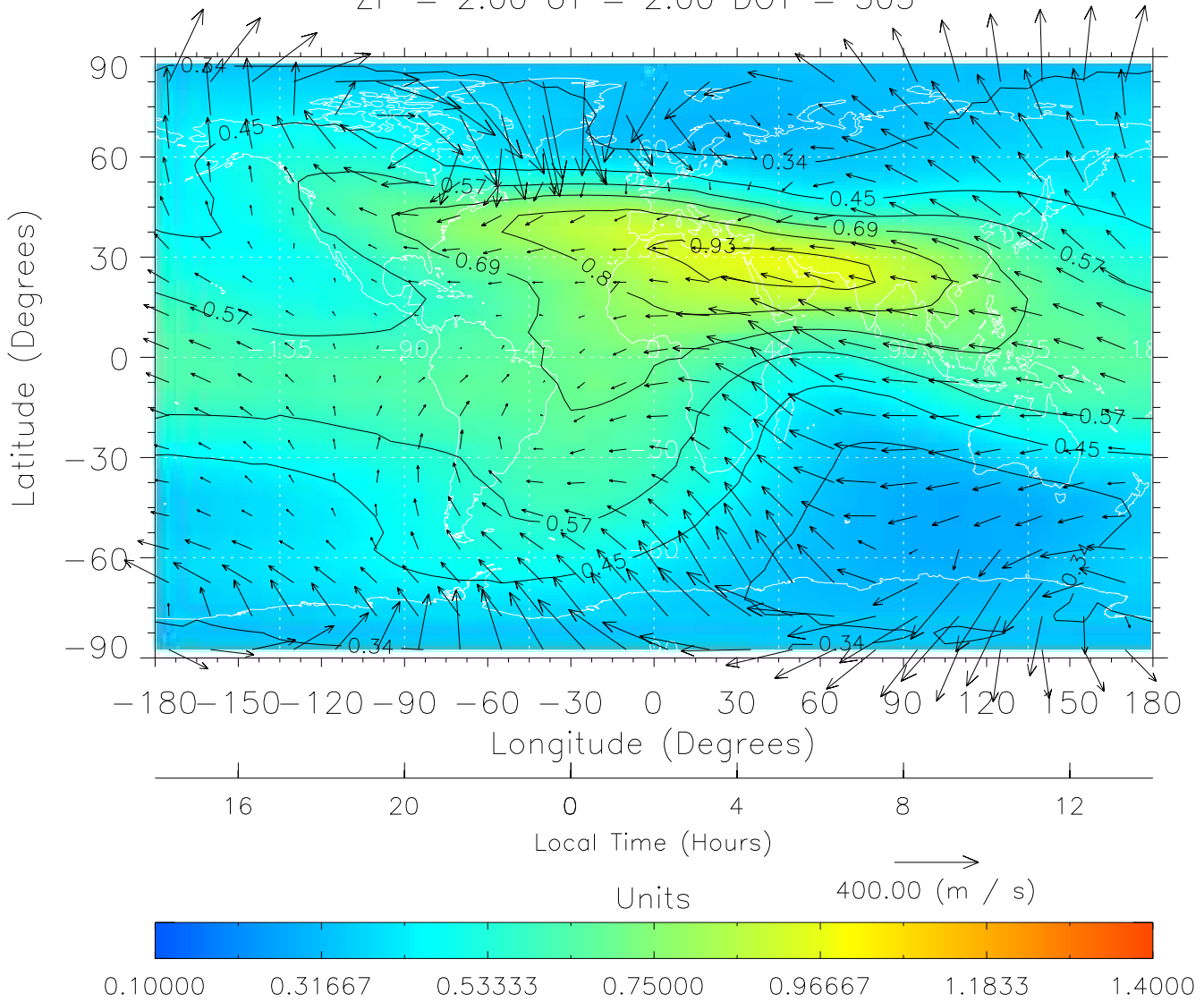
TIME-GCM MAP  $\Sigma O/N_2$  with Neutral Wind vectors  
ZP = 2.00 UT = 1.00 DOY = 305



Created: Thu Mar 10 14:24:13 2005

From: /home/tgcm/histories/secondary/OctoberNovember2003/OctoberNovember2003\_v1/305.nc

TIME-GCM MAP  $\Sigma O/N_2$  with Neutral Wind vectors  
ZP = 2.00 UT = 2.00 DOY = 305

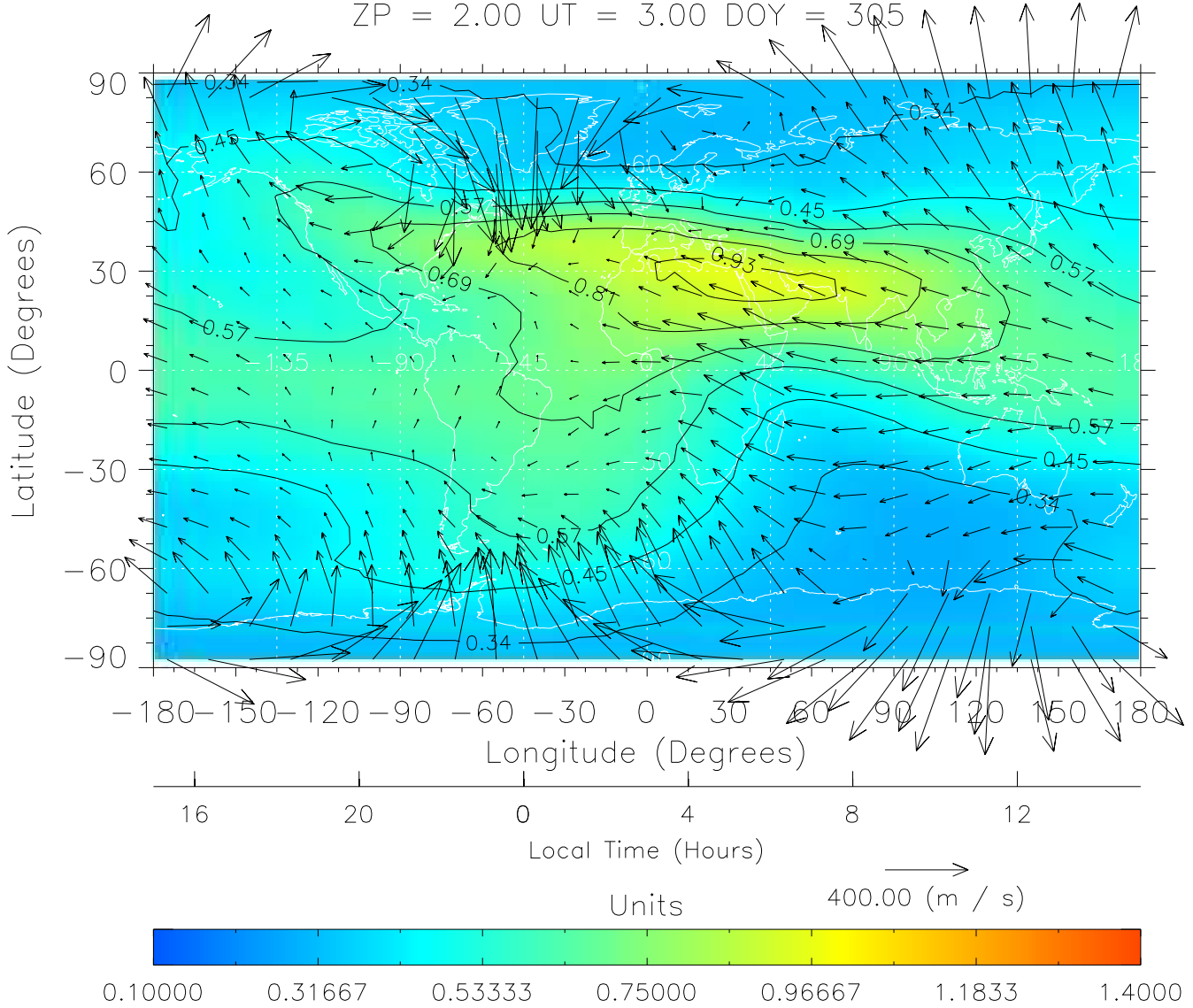


Created: Thu Mar 10 14:24:14 2005

From: /home/tgcm/histories/secondary/OctoberNovember2003/OctoberNovember2003\_v1/305.nc

TIME-GCM MAP  $\Sigma O/N_2$  with Neutral Wind vectors

ZP = 2.00 UT = 3.00 DOY = 305

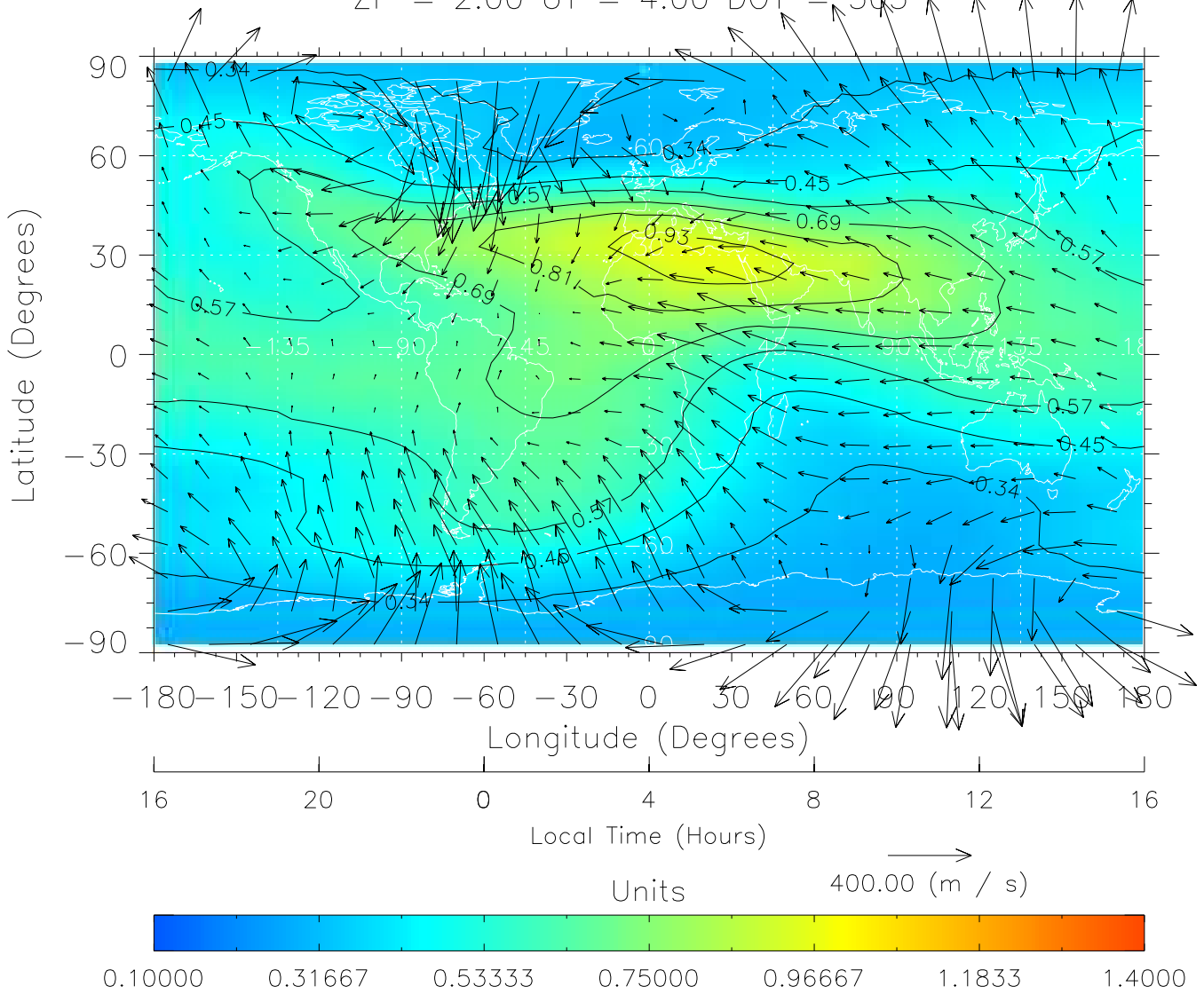


Created: Thu Mar 10 14:24:14 2005

From: /home/tgcm/histories/secondary/OctoberNovember2003/OctoberNovember2003\_v1/305.nc

TIME-GCM MAP  $\Sigma O/N_2$  with Neutral Wind vectors

ZP = 2.00 UT = 4.00 DOY = 305

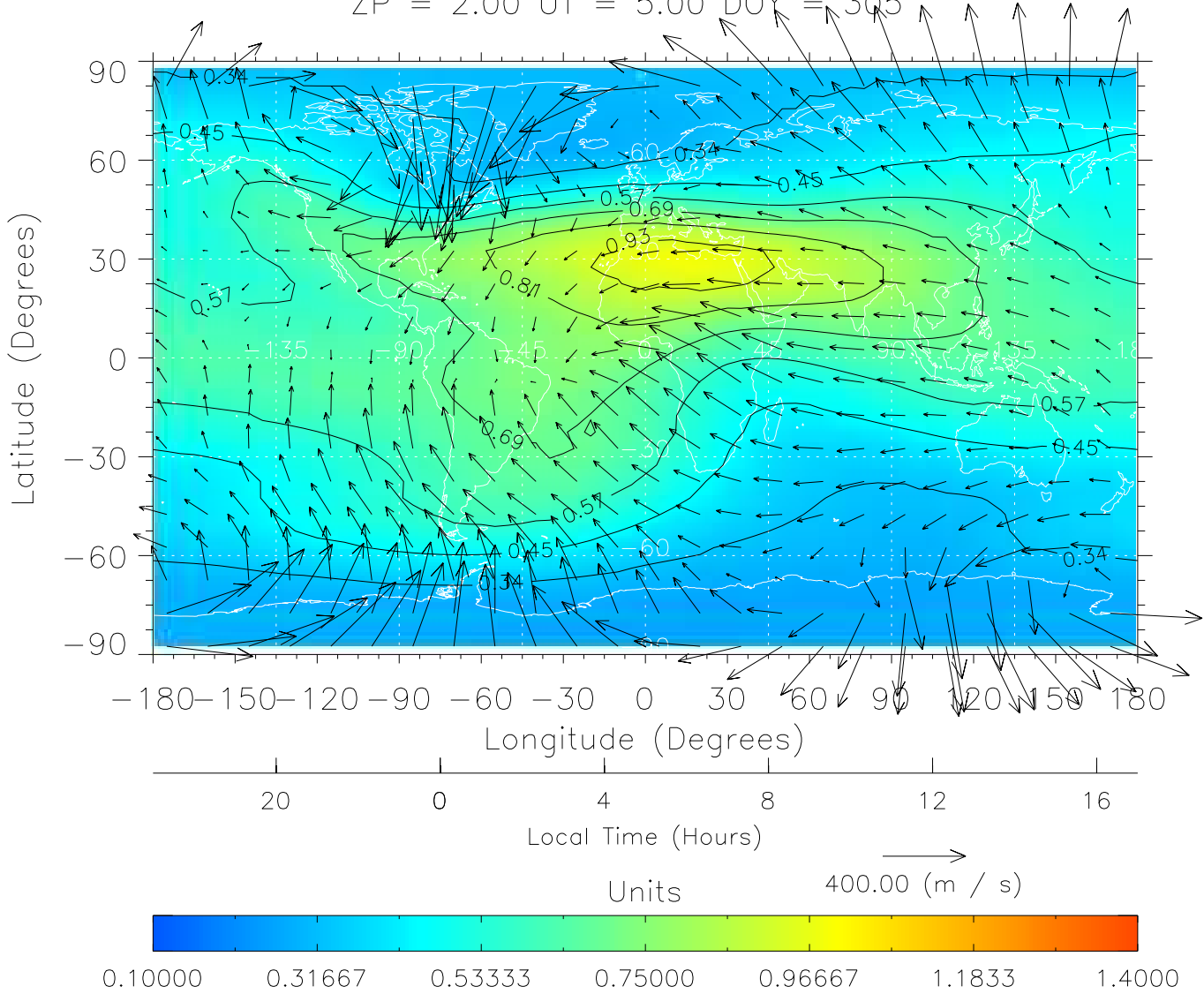


Created: Thu Mar 10 14:24:15 2005

From: /home/tgcm/histories/secondary/OctoberNovember2003/OctoberNovember2003\_v1/305.nc

TIME-GCM MAP  $\Sigma O/N_2$  with Neutral Wind vectors

ZP = 2.00 UT = 5.00 DOY = 305

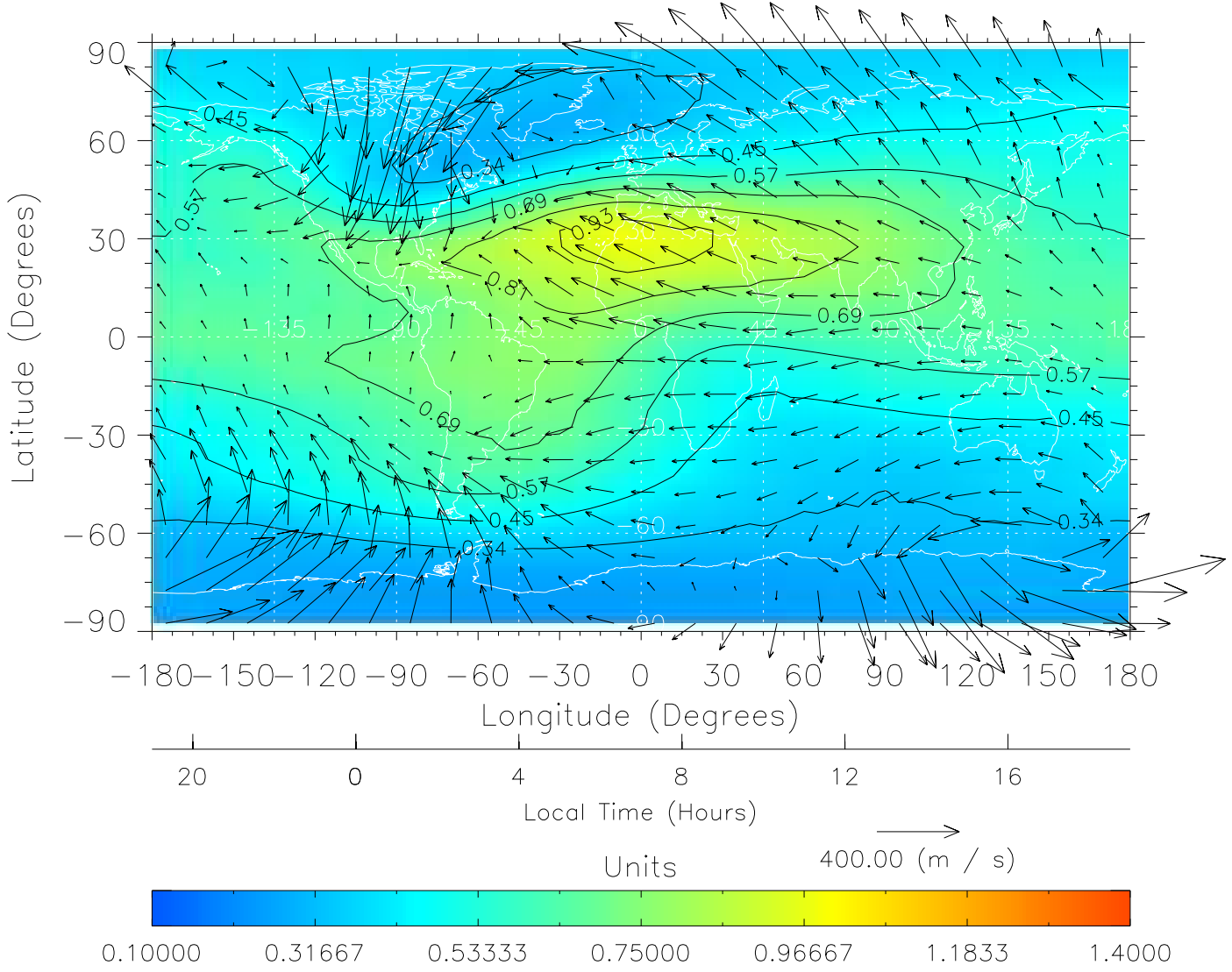


Created: Thu Mar 10 14:24:15 2005

From: /home/tgcm/histories/secondary/OctoberNovember2003/OctoberNovember2003\_v1/305.nc



TIME-GCM MAP  $\Sigma O/N_2$  with Neutral Wind vectors  
ZP = 2.00 UT = 7.00 DOY = 305

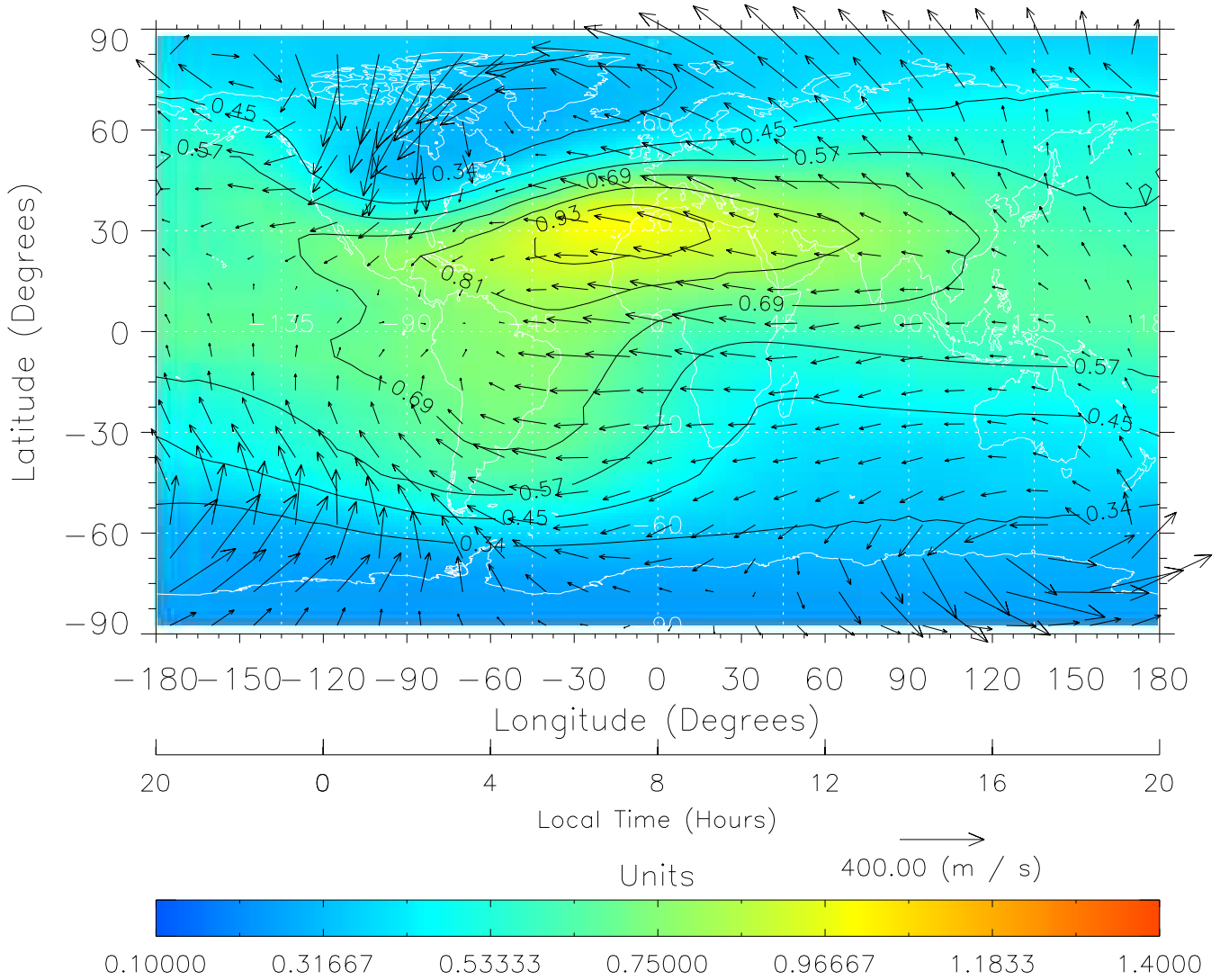


Created: Thu Mar 10 14:24:17 2005

From: /home/tgcm/histories/secondary/OctoberNovember2003/OctoberNovember2003\_v1/305.nc



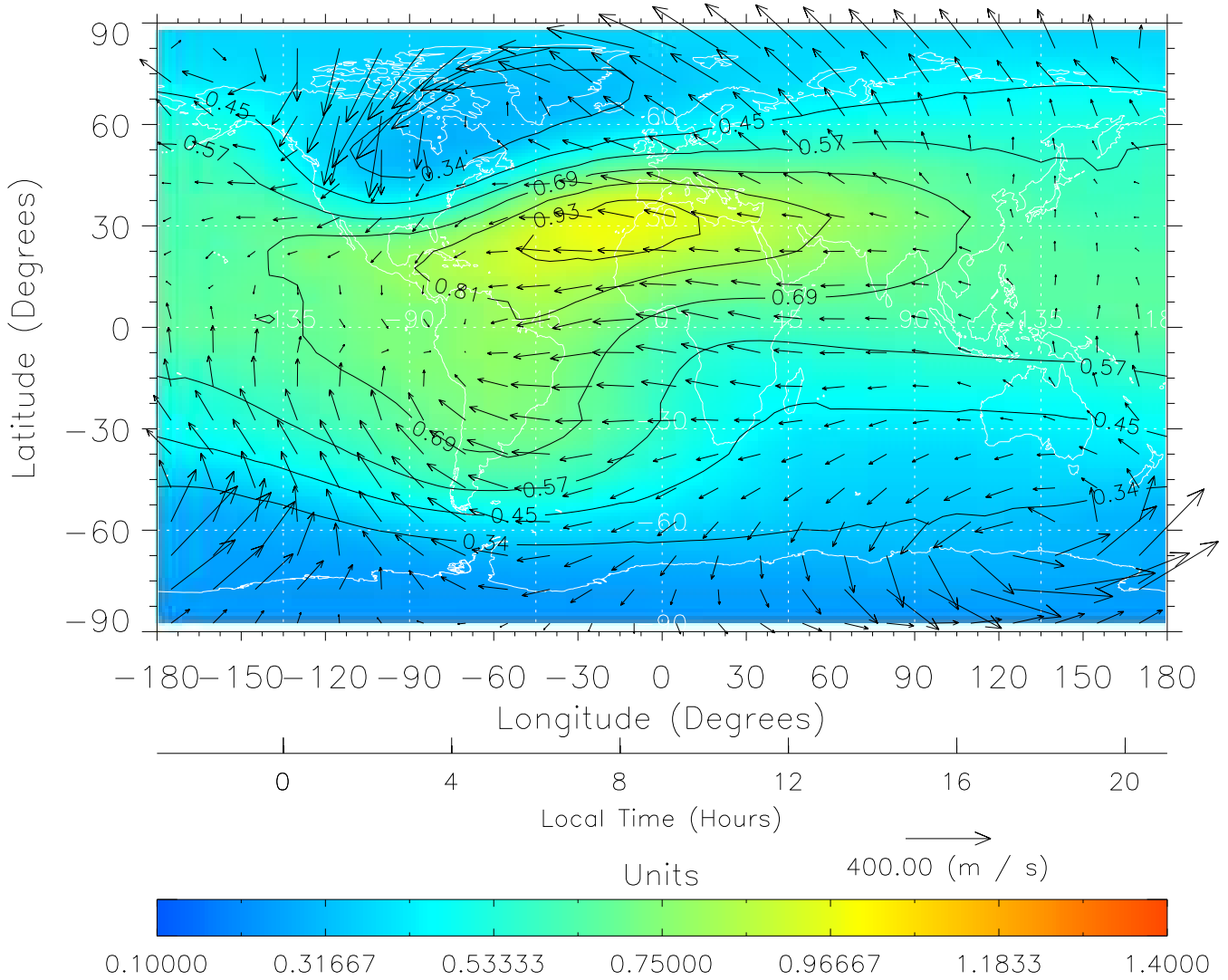
TIME-GCM MAP  $\Sigma O/N_2$  with Neutral Wind vectors  
ZP = 2.00 UT = 8.00 DOY = 305



Created: Thu Mar 10 14:24:17 2005

From: /home/tgcm/histories/secondary/OctoberNovember2003/OctoberNovember2003\_v1/305.nc

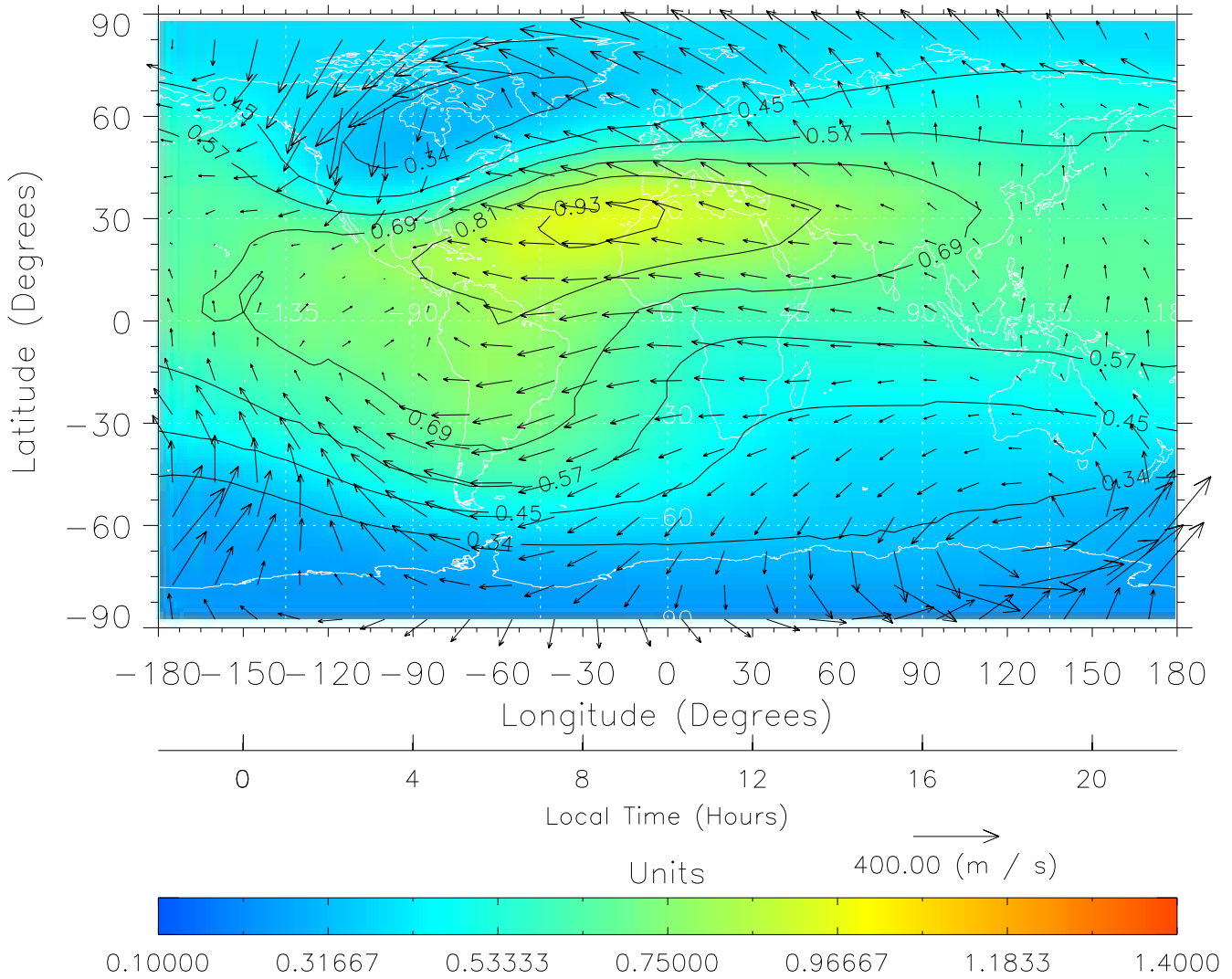
TIME-GCM MAP  $\Sigma O/N_2$  with Neutral Wind vectors  
ZP = 2.00 UT = 9.00 DOY = 305



Created: Thu Mar 10 14:24:18 2005

From: /home/tgcm/histories/secondary/OctoberNovember2003/OctoberNovember2003\_v1/305.nc

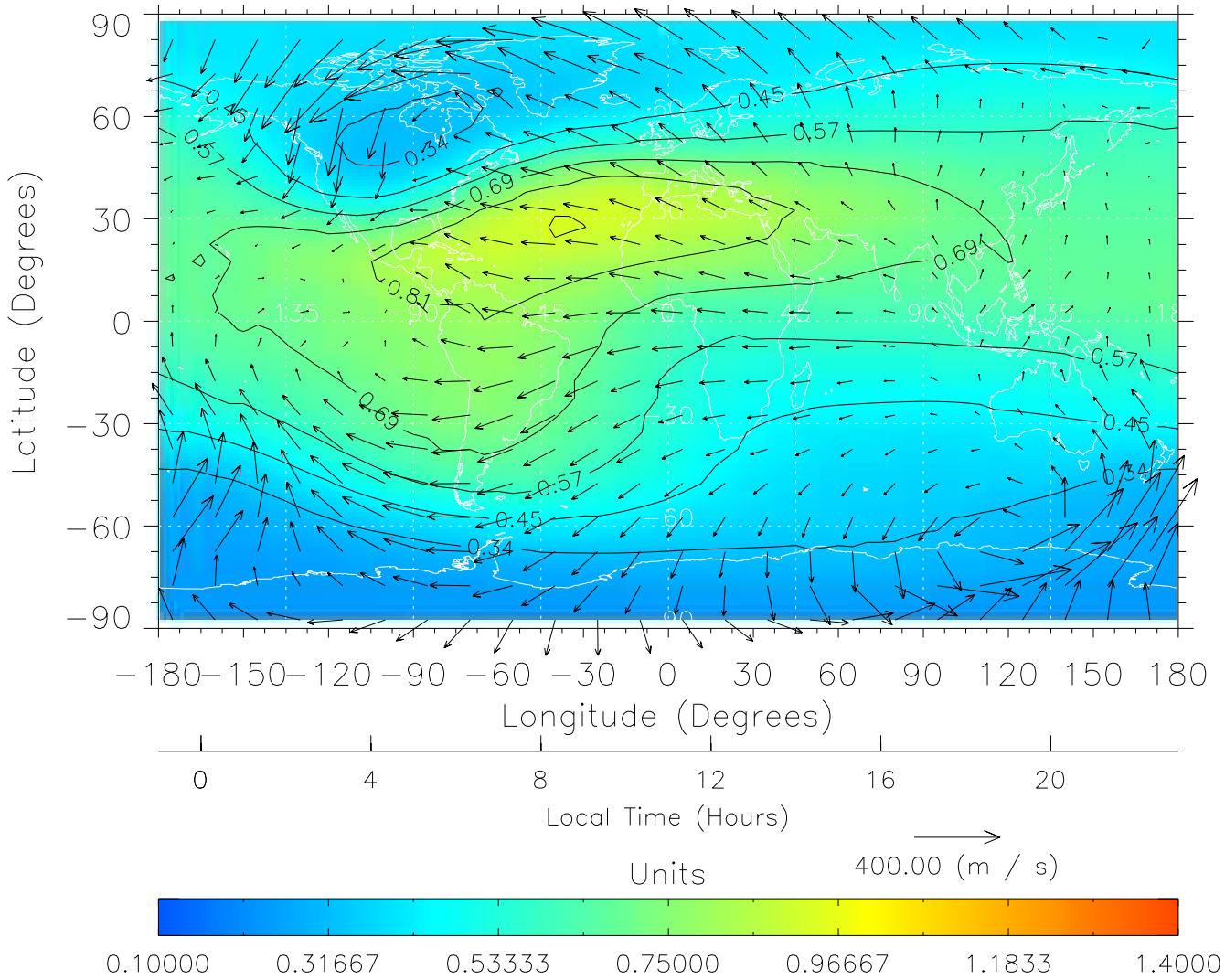
TIME-GCM MAP  $\Sigma O/N_2$  with Neutral Wind vectors  
ZP = 2.00 UT = 10.00 DOY = 305



Created: Thu Mar 10 14:24:18 2005

From: /home/tgcm/histories/secondary/OctoberNovember2003/OctoberNovember2003\_v1/305.nc

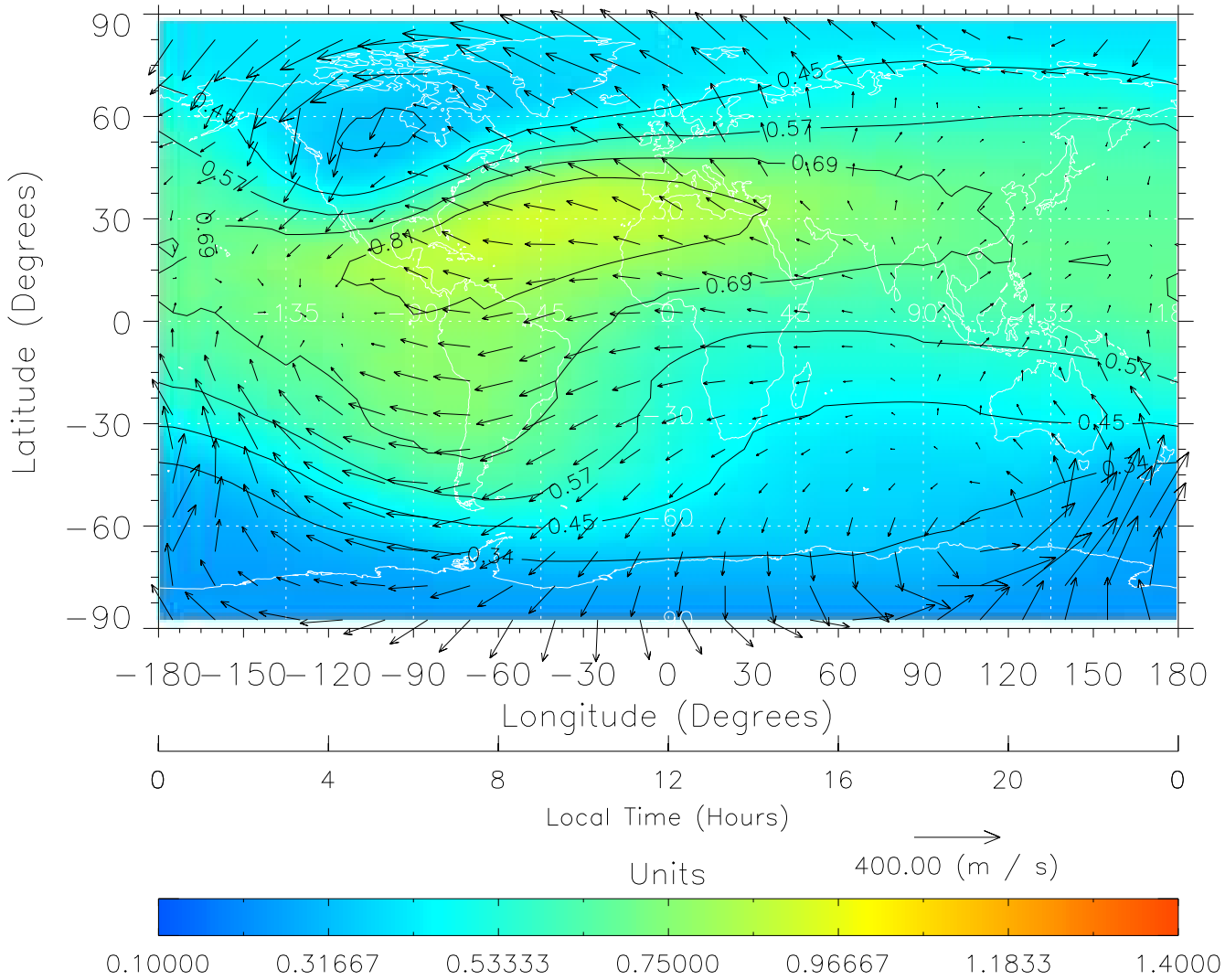
TIME-GCM MAP  $\Sigma O/N_2$  with Neutral Wind vectors  
ZP = 2.00 UT = 11.00 DOY = 305



Created: Thu Mar 10 14:24:19 2005

From: /home/tgcm/histories/secondary/OctoberNovember2003/OctoberNovember2003\_v1/305.nc

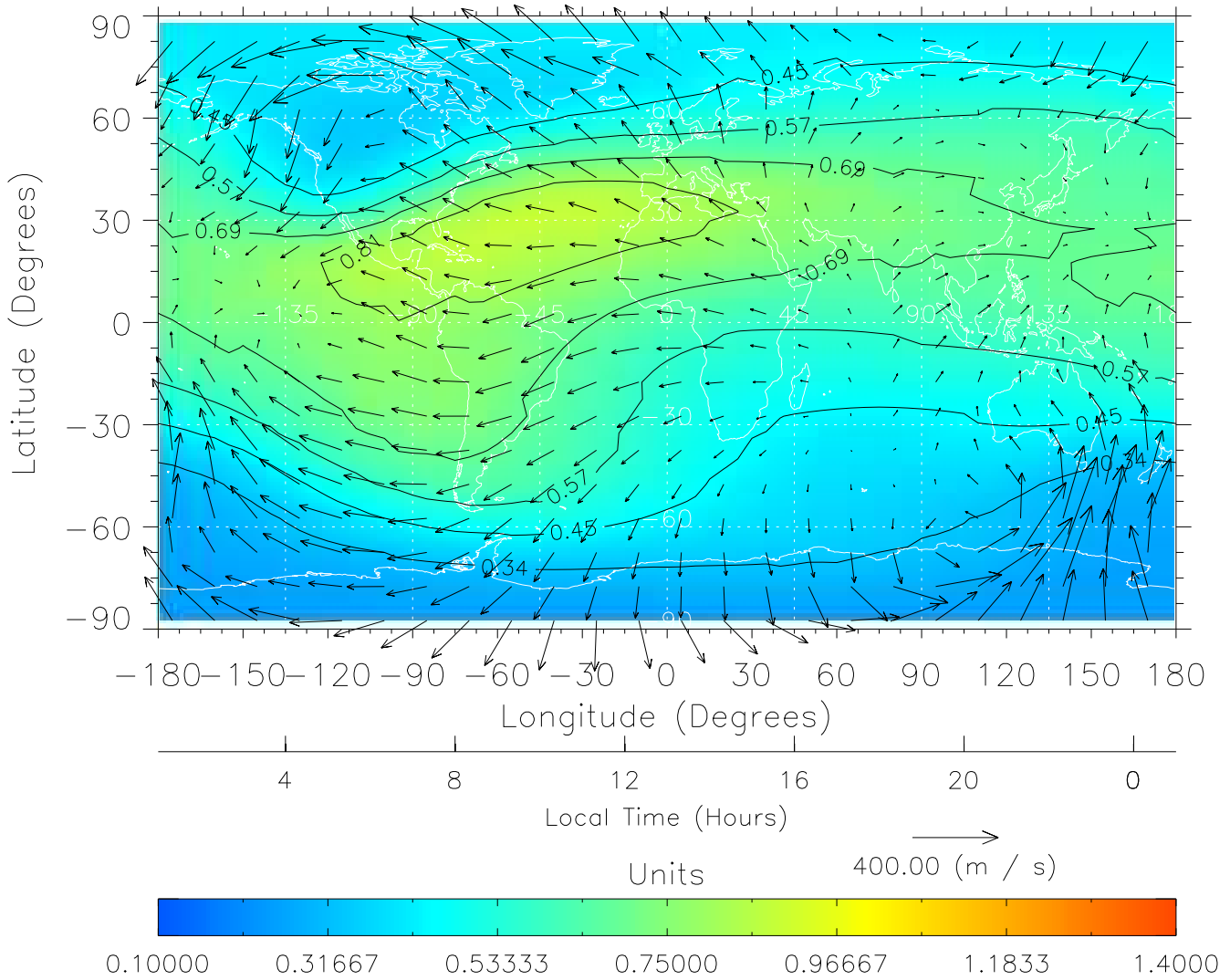
TIME-GCM MAP  $\Sigma O/N_2$  with Neutral Wind vectors  
ZP = 2.00 UT = 12.00 DOY = 305



Created: Thu Mar 10 14:24:19 2005

From: /home/tgcm/histories/secondary/OctoberNovember2003/OctoberNovember2003\_v1/305.nc

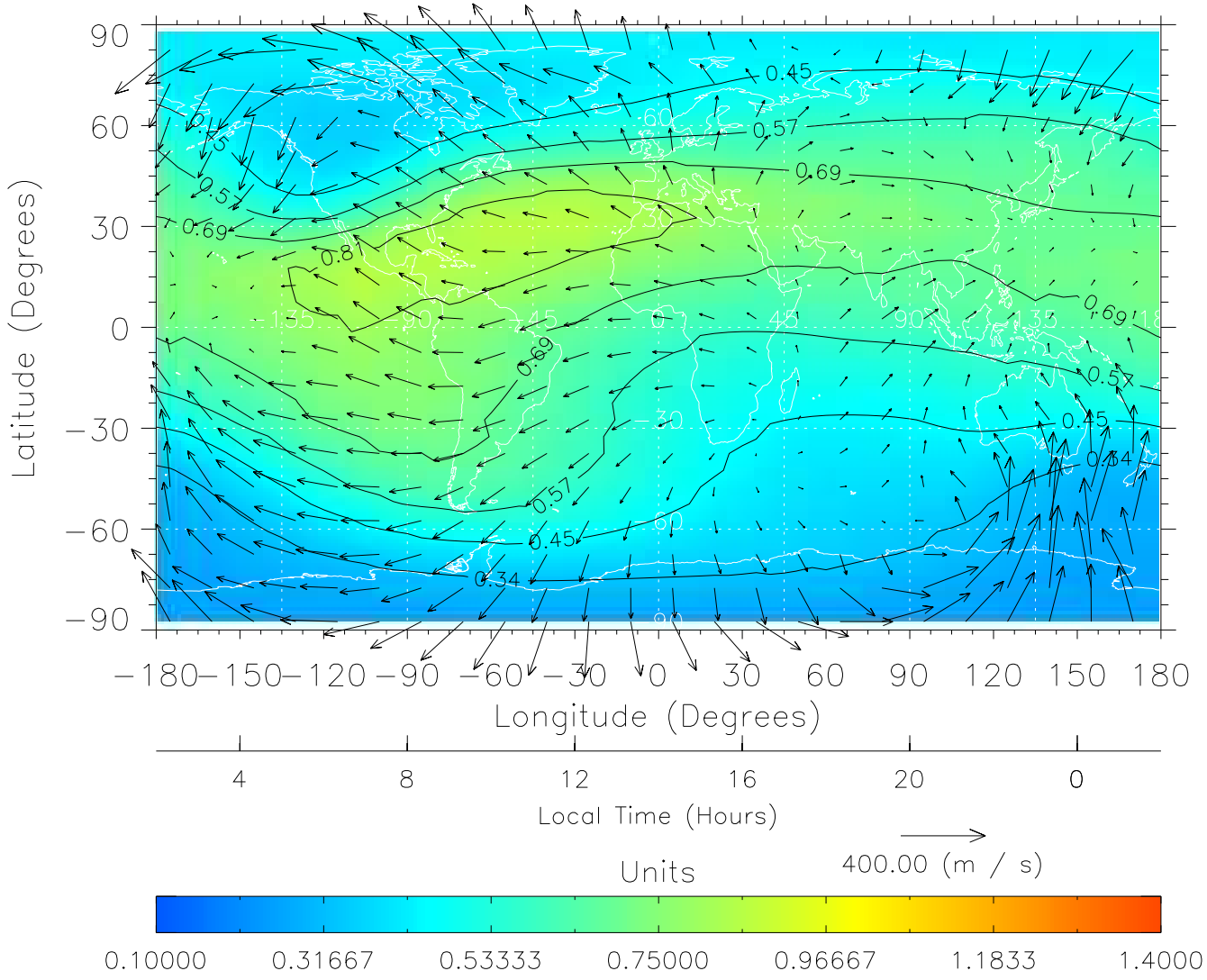
TIME-GCM MAP  $\Sigma O/N_2$  with Neutral Wind vectors  
ZP = 2.00 UT = 13.00 DOY = 305



Created: Thu Mar 10 14:24:19 2005

From: /home/tgcm/histories/secondary/OctoberNovember2003/OctoberNovember2003\_v1/305.nc

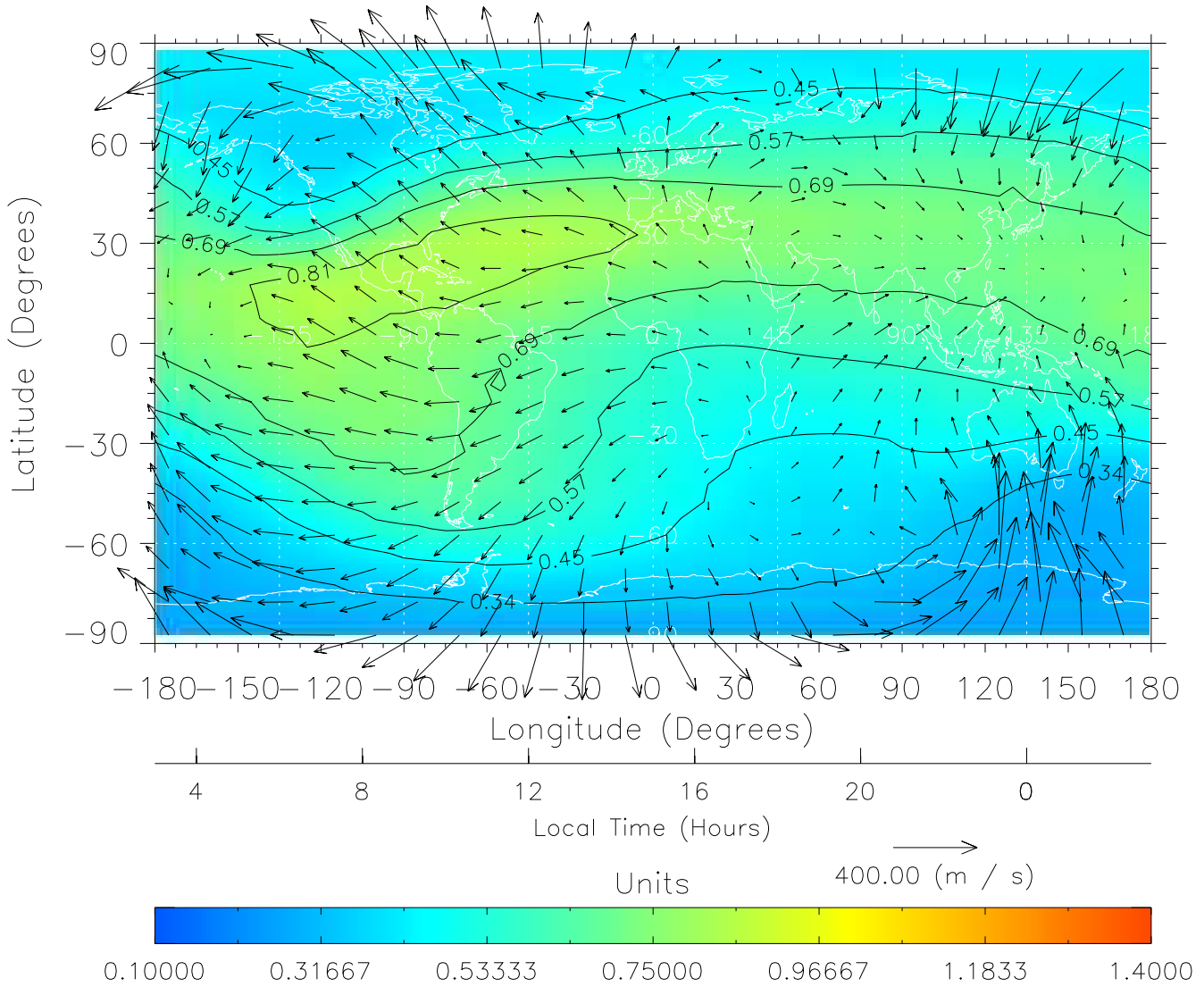
TIME-GCM MAP  $\Sigma O/N_2$  with Neutral Wind vectors  
ZP = 2.00 UT = 14.00 DOY = 305



Created: Thu Mar 10 14:24:20 2005

From: /home/tgcm/histories/secondary/OctoberNovember2003/OctoberNovember2003\_v1/305.nc

TIME-GCM MAP  $\Sigma O/N_2$  with Neutral Wind vectors  
ZP = 2.00 UT = 15.00 DOY = 305



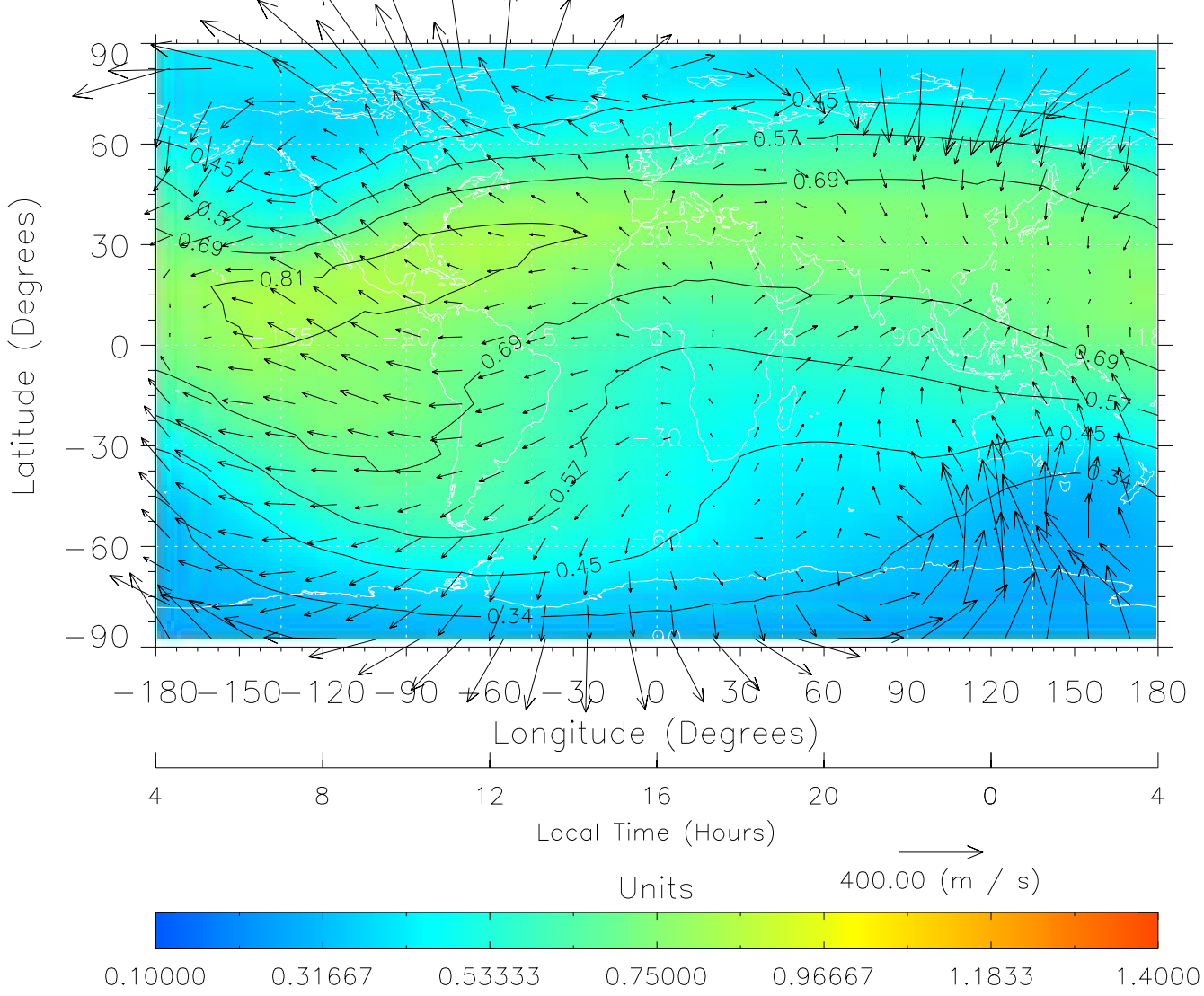
Created: Thu Mar 10 14:24:20 2005

From: /home/tgcm/histories/secondary/OctoberNovember2003/OctoberNovember2003\_v1/305.nc



TIME-GCM MAP  $\Sigma O/N_2$  with Neutral Wind vectors

ZP = 2.00 UT = 16.00 DOY = 305

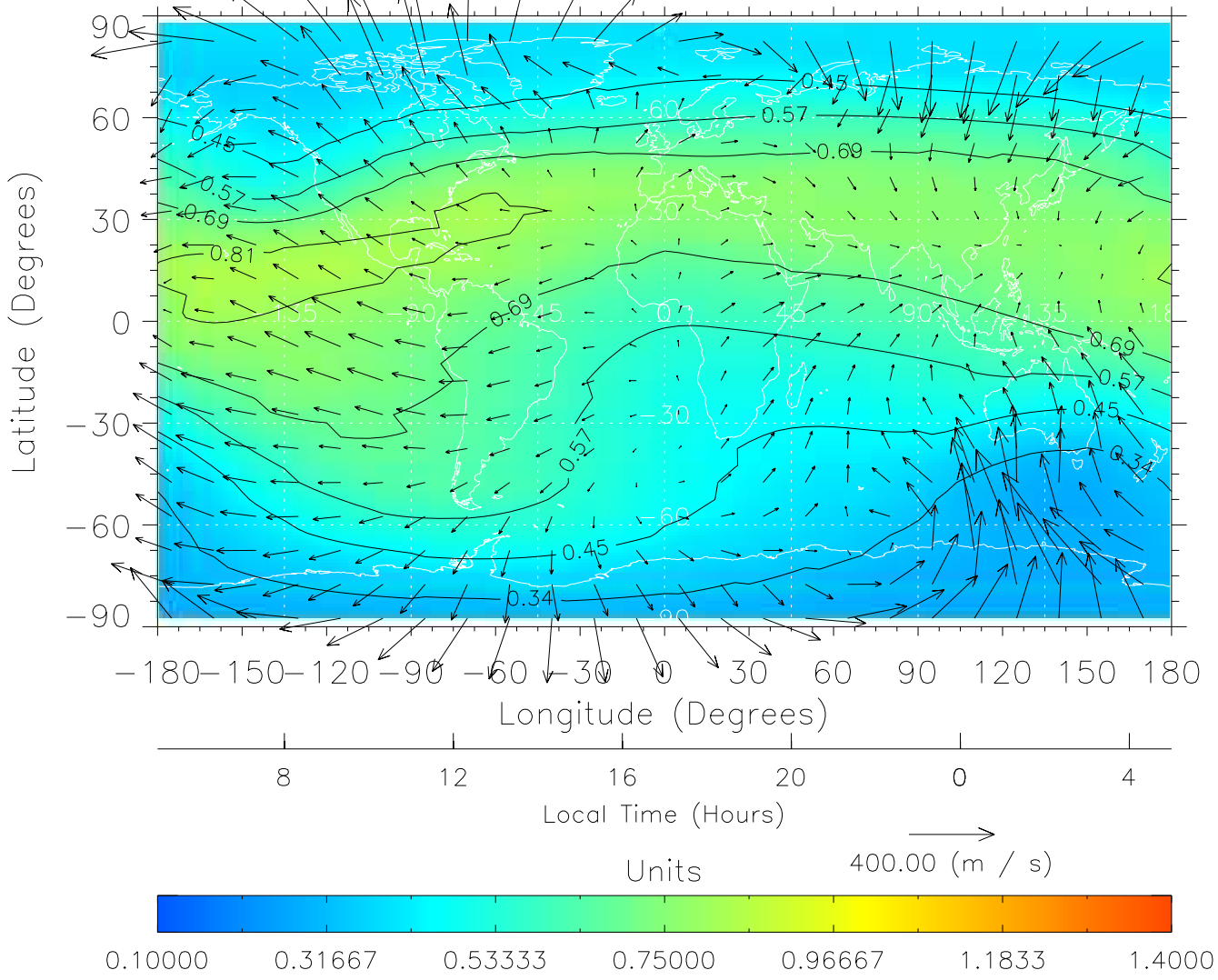


Created: Thu Mar 10 14:24:21 2005

From: /home/tgcm/histories/secondary/OctoberNovember2003/OctoberNovember2003\_v1/305.nc

TIME-GCM MAP  $\Sigma O/N_2$  with Neutral Wind vectors

ZP = 2.00 UT = 17.00 DOY = 305

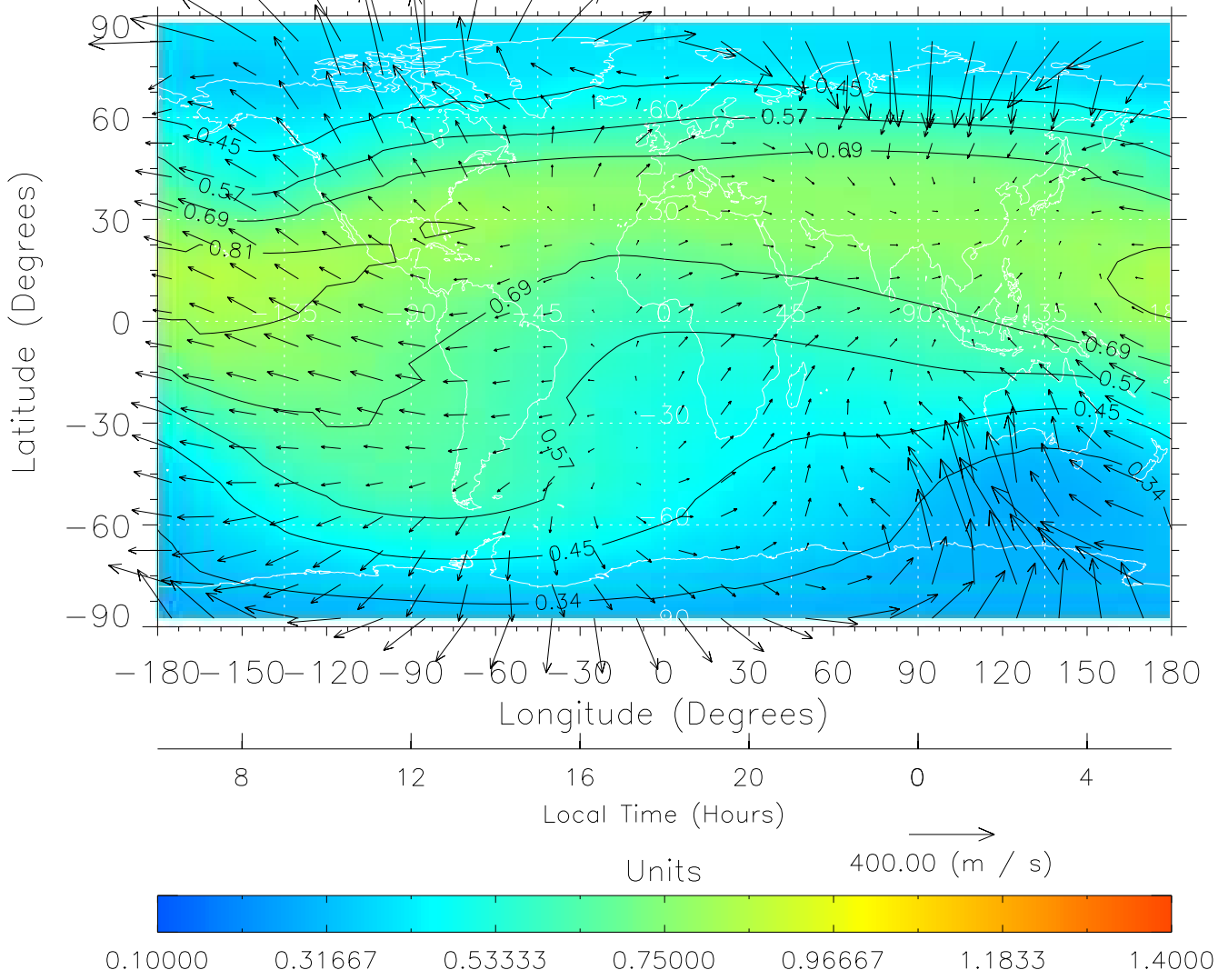


Created: Thu Mar 10 14:24:21 2005

From: /home/tgcm/histories/secondary/OctoberNovember2003/OctoberNovember2003\_v1/305.nc

TIME-GCM MAP  $\Sigma O/N_2$  with Neutral Wind vectors

TP = 2.00 UT = 18.00 DOY = 305

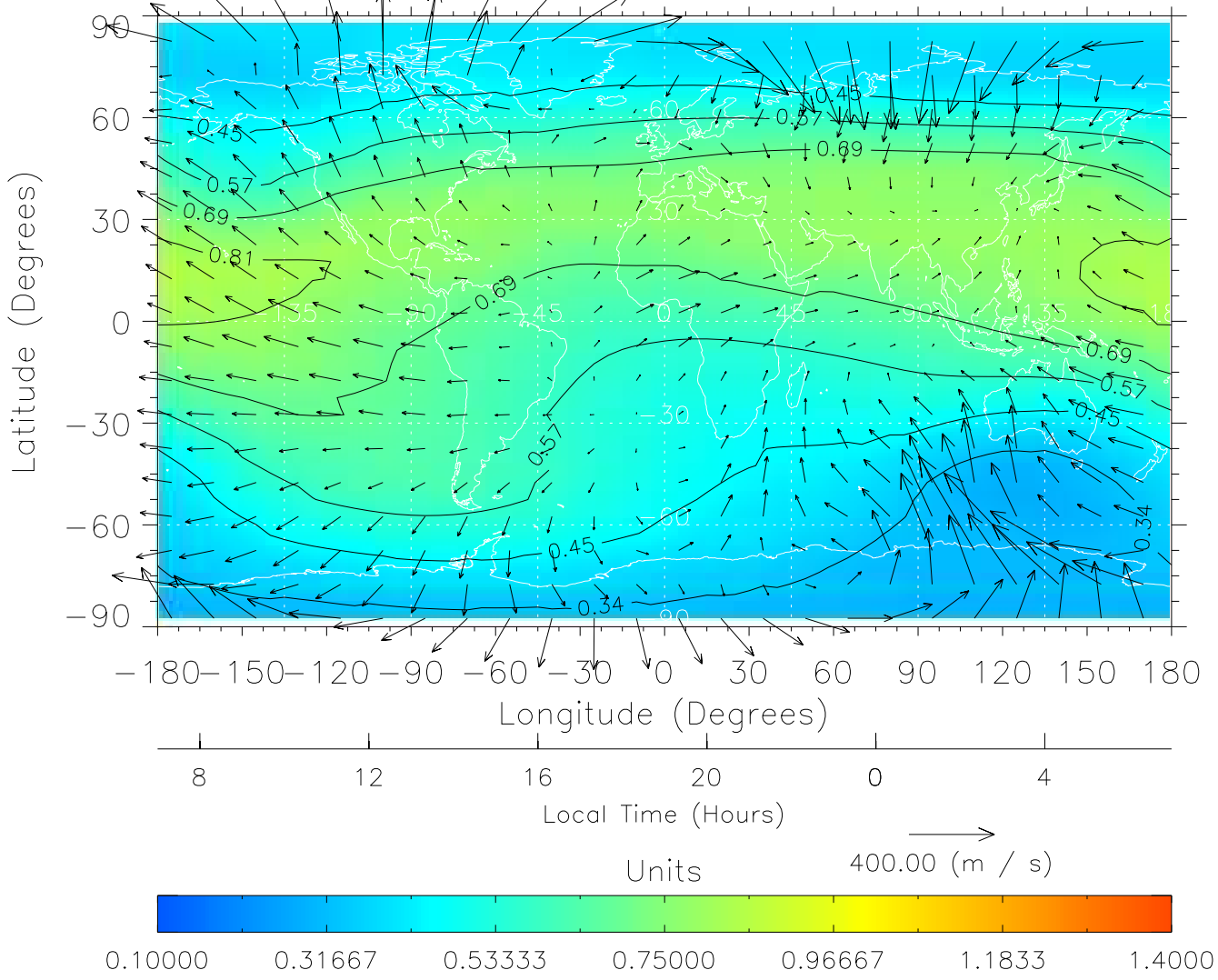


Created: Thu Mar 10 14:24:22 2005

From: /home/tgcm/histories/secondary/OctoberNovember2003/OctoberNovember2003\_v1/305.nc

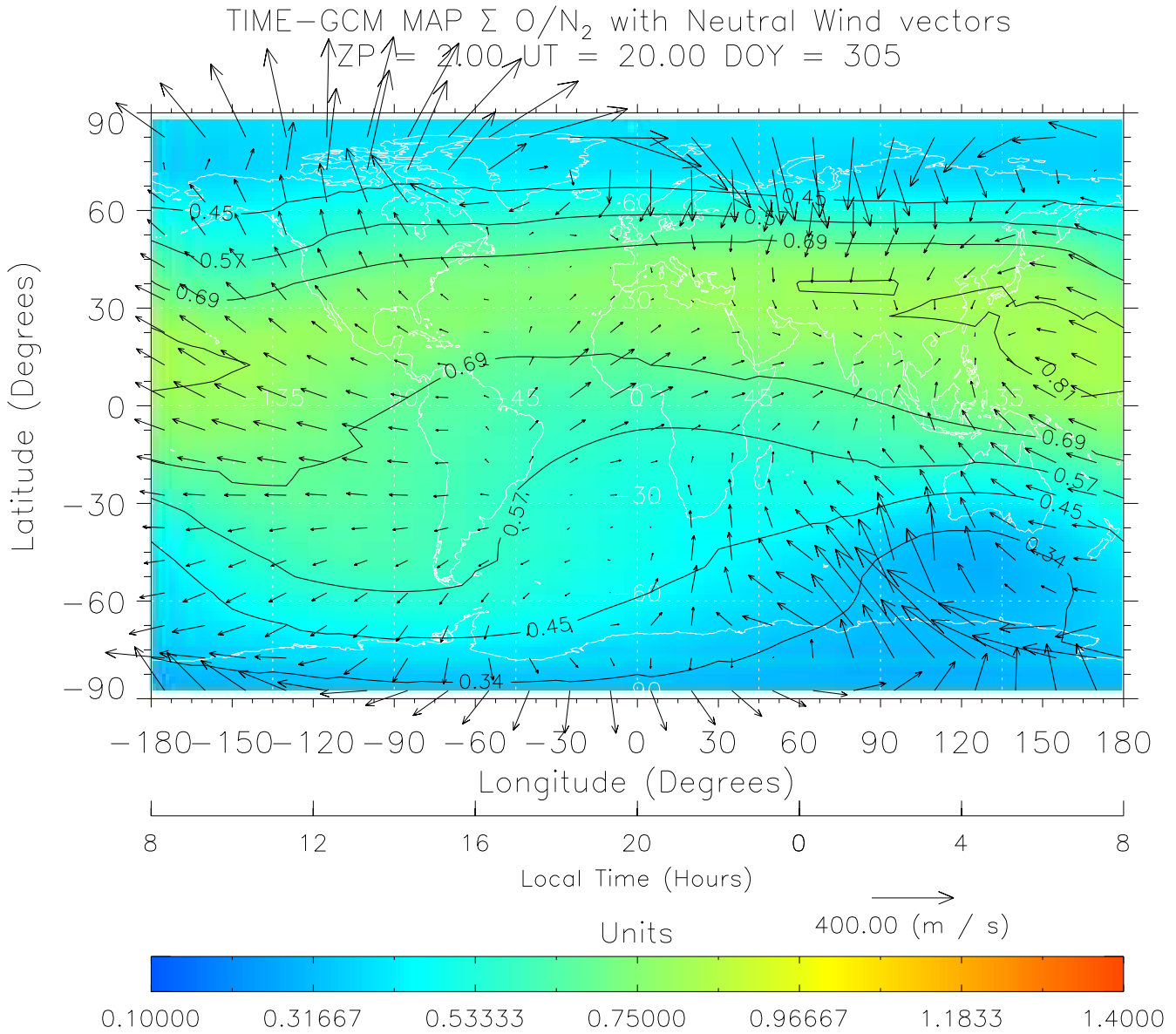
TIME-GCM MAP  $\Sigma O/N_2$  with Neutral Wind vectors

ZP = 2.00 UT = 19.00 DOY = 305



Created: Thu Mar 10 14:24:22 2005

From: /home/tgcm/histories/secondary/OctoberNovember2003/OctoberNovember2003\_v1/305.nc

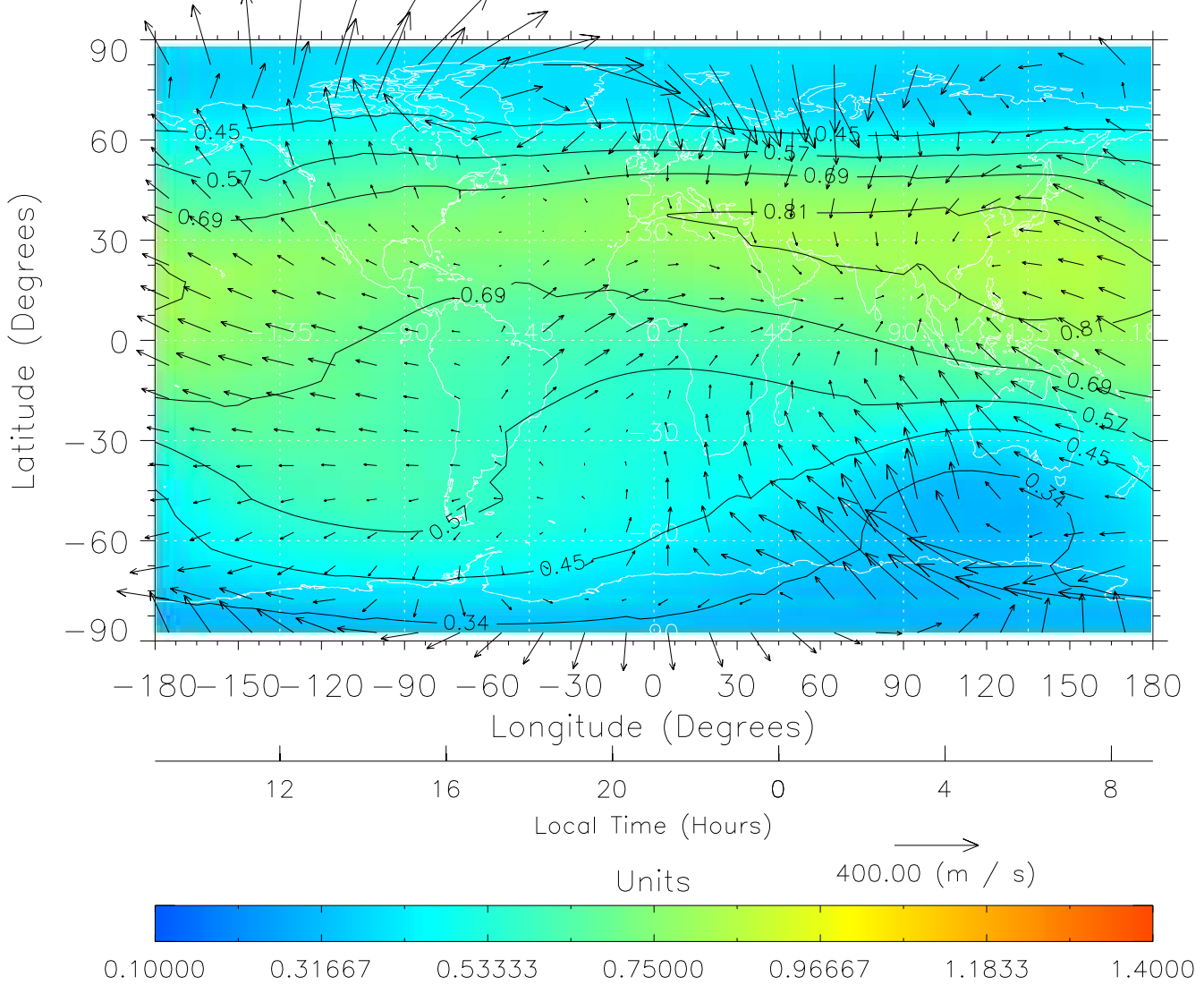


Created: Thu Mar 10 14:24:23 2005

From: /home/tgcm/histories/secondary/OctoberNovember2003/OctoberNovember2003\_v1/305.nc

TIME-GCM MAP  $\Sigma O/N_2$  with Neutral Wind vectors

ZP  $\Rightarrow$  2.00 UT = 21.00 DOY = 305

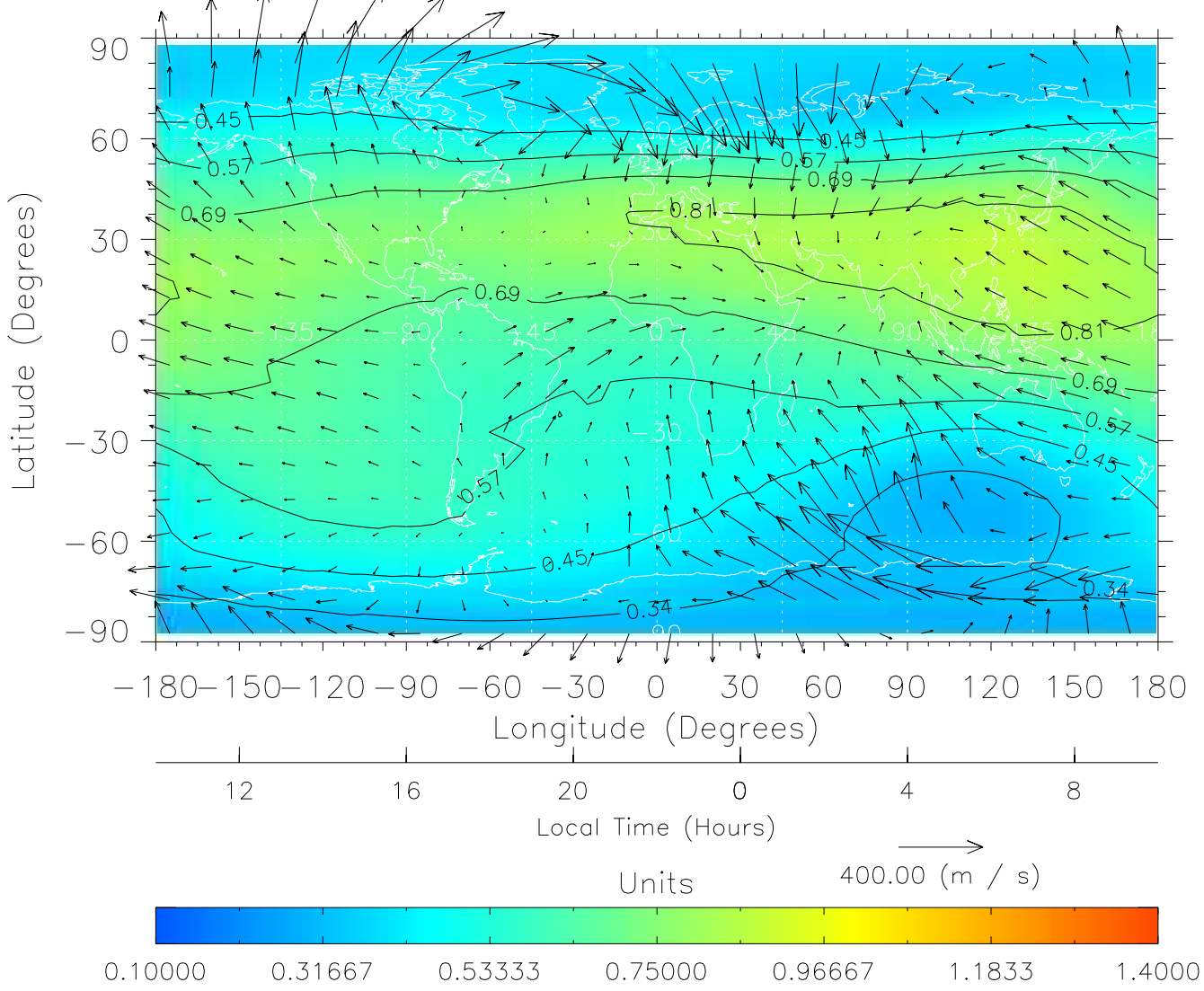


Created: Thu Mar 10 14:24:23 2005

From: /home/tgcm/histories/secondary/OctoberNovember2003/OctoberNovember2003\_v1/305.nc

TIME-GCM MAP  $\Sigma O/N_2$  with Neutral Wind vectors

ZP = 2.00 UT = 22.00 DOY = 305

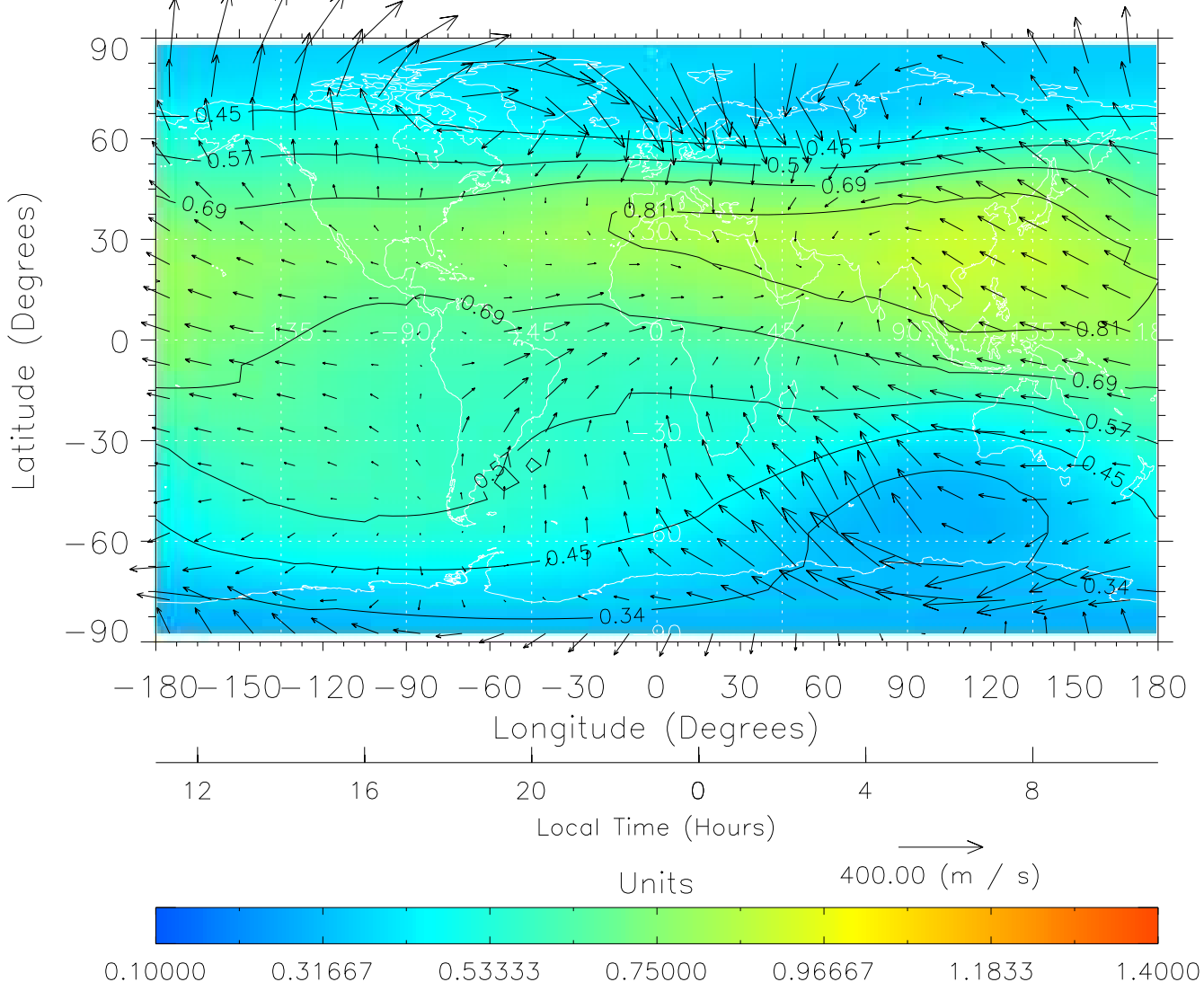


Created: Thu Mar 10 14:24:24 2005

From: /home/tgcm/histories/secondary/OctoberNovember2003/OctoberNovember2003\_v1/305.nc

TIME-GCM MAP  $\Sigma O/N_2$  with Neutral Wind vectors

ZP = 2.00 UT = 23.00 DOY = 305



Created: Thu Mar 10 14:24:24 2005

From: /home/tgcm/histories/secondary/OctoberNovember2003/OctoberNovember2003\_v1/305.nc