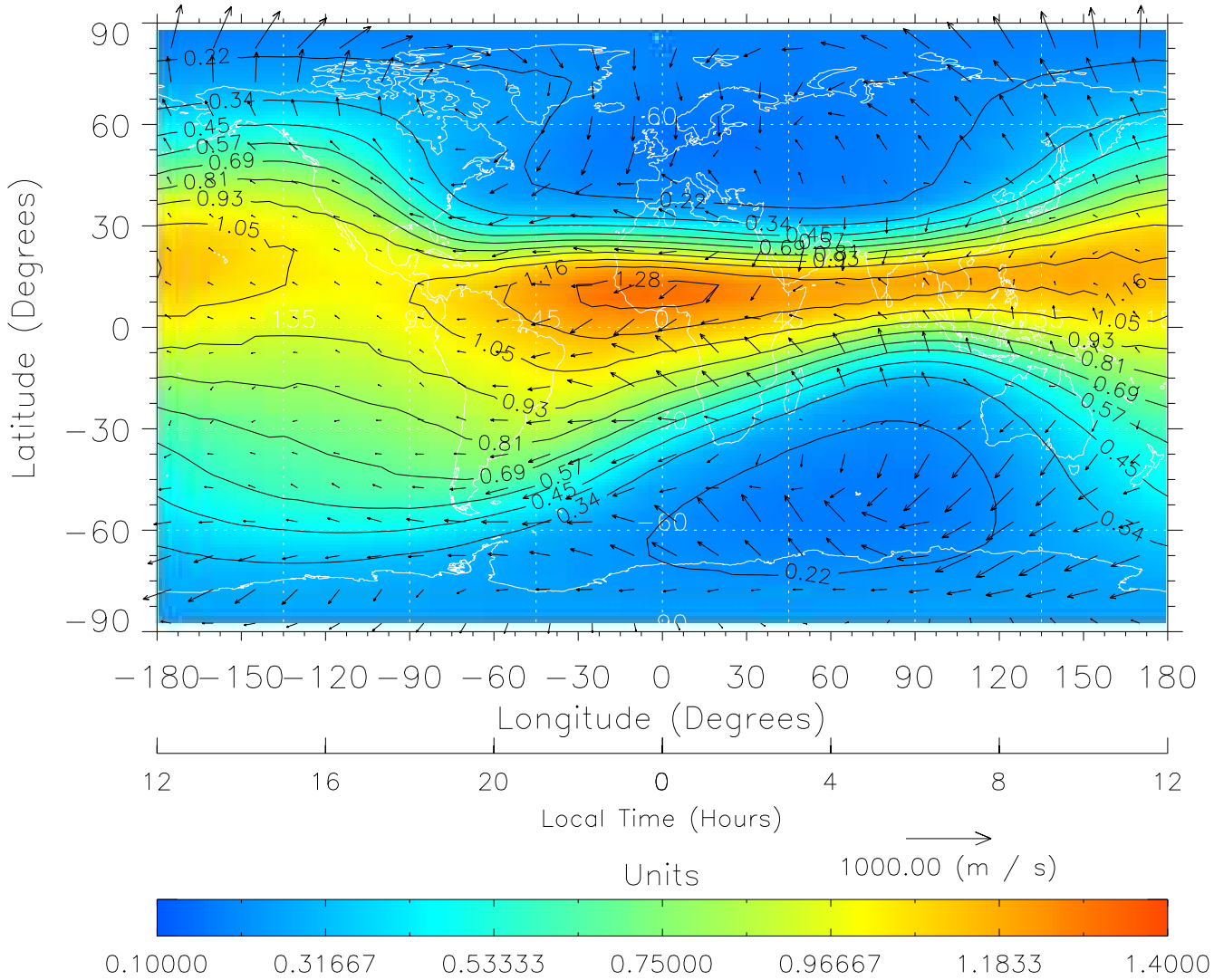


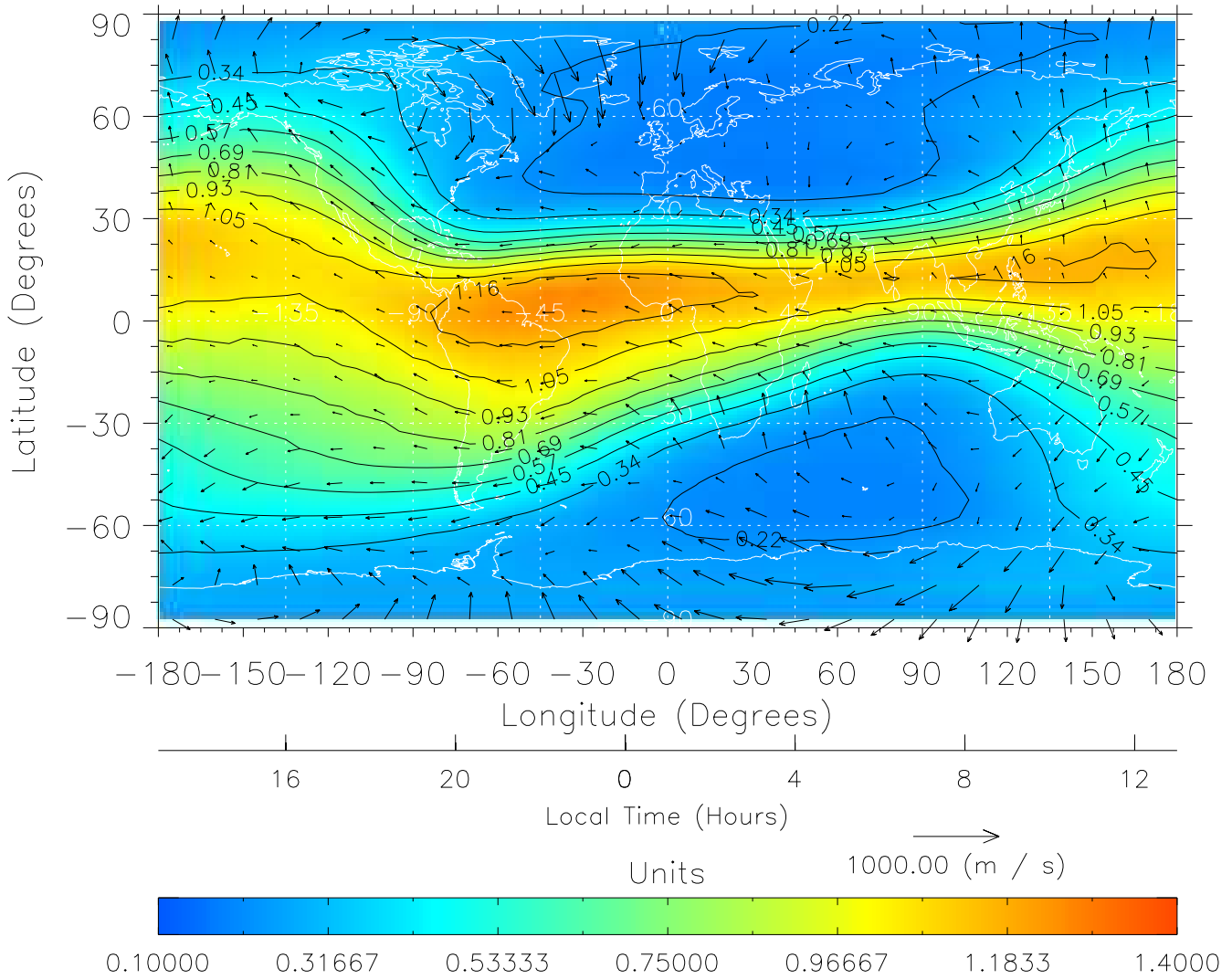
TIME-GCM MAP $\Sigma O/N_2$ with Neutral Wind vectors
 ZP = 2.00 UT = 0.00 DOY = 303



Created: Thu Mar 10 14:21:43 2005

From: /home/tgcm/histories/secondary/OctoberNovember2003/OctoberNovember2003_v1/303.nc

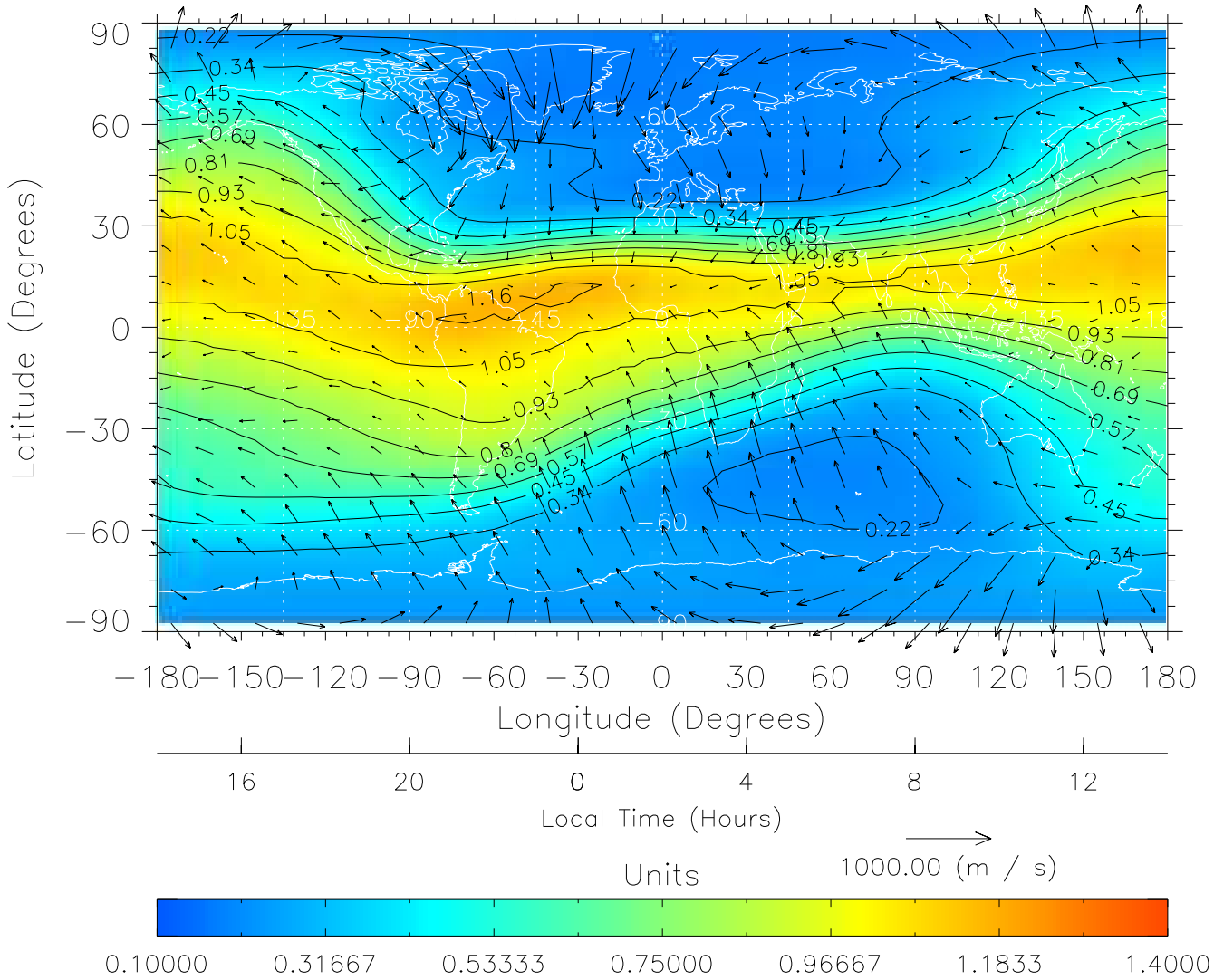
TIME-GCM MAP $\Sigma O/N_2$ with Neutral Wind vectors
ZP = 2.00 UT = 1.00 DOY = 303



Created: Thu Mar 10 14:21:44 2005

From: /home/tgcm/histories/secondary/OctoberNovember2003/OctoberNovember2003_v1/303.nc

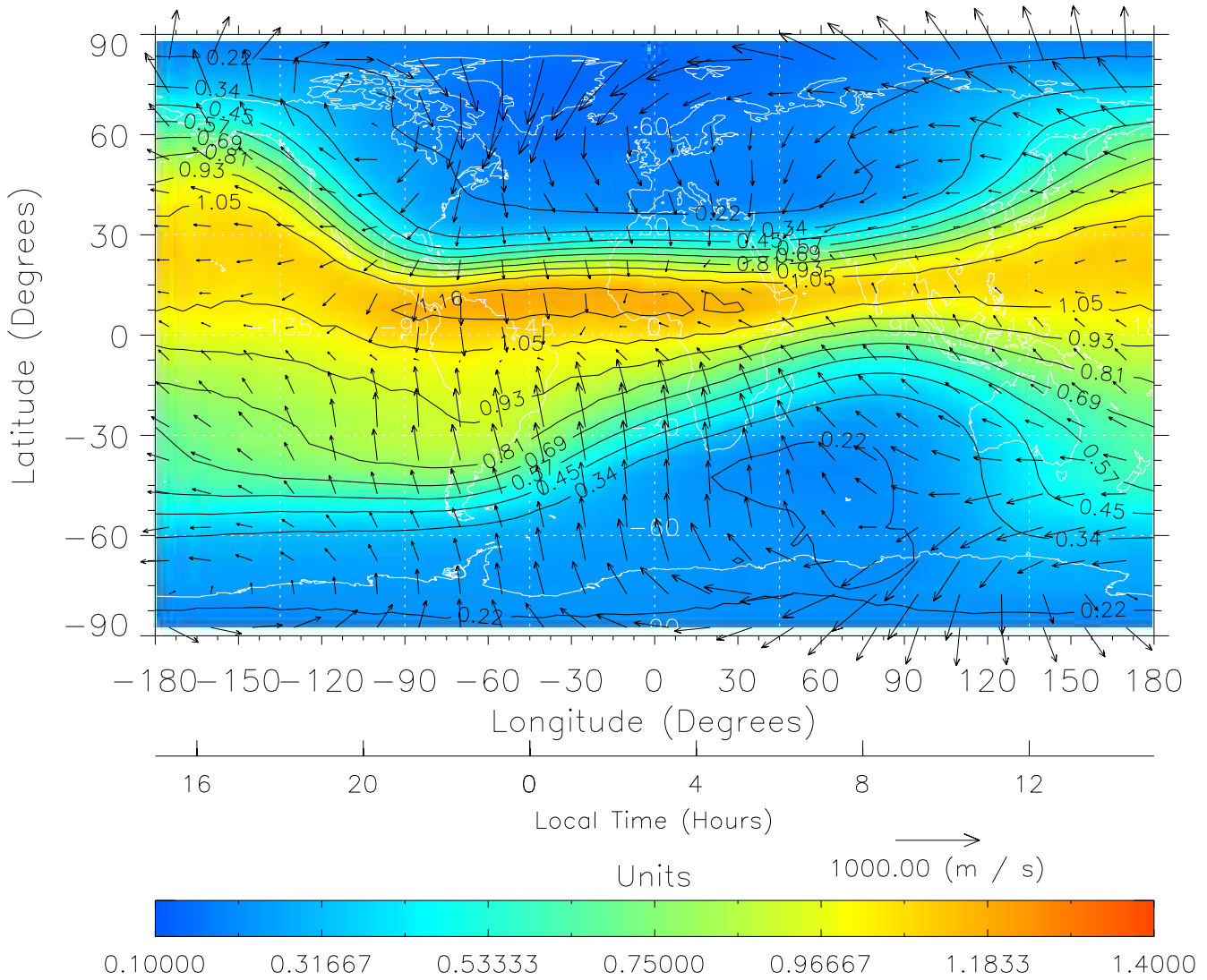
TIME-GCM MAP $\Sigma O/N_2$ with Neutral Wind vectors
 ZP = 2.00 UT = 2.00 DOY = 303



Created: Thu Mar 10 14:21:45 2005

From: /home/tgcm/histories/secondary/OctoberNovember2003/OctoberNovember2003_v1/303.nc

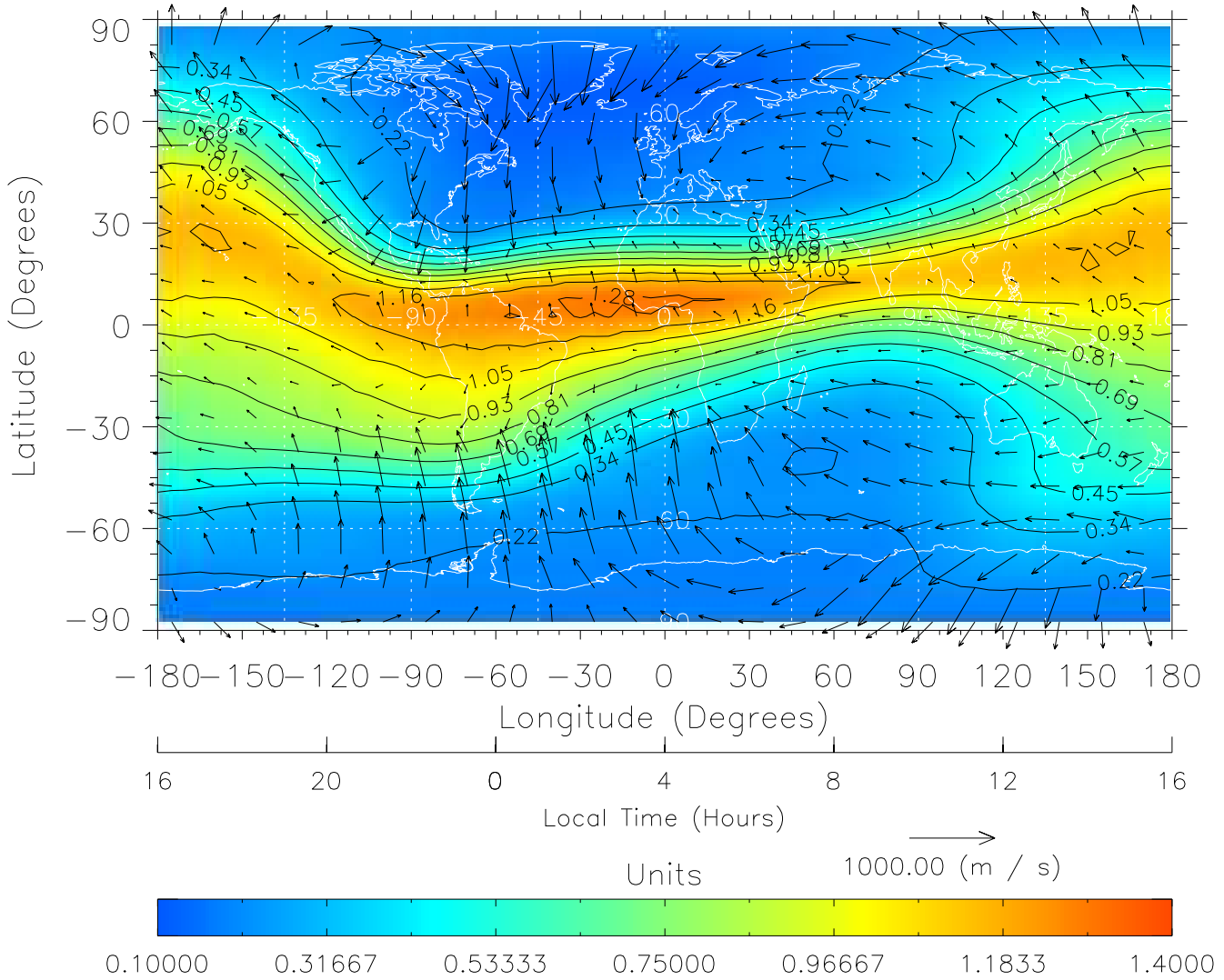
TIME-GCM MAP $\Sigma O/N_2$ with Neutral Wind vectors
ZP = 2.00 UT = 3.00 DOY = 303



Created: Thu Mar 10 14:21:45 2005

From: /home/tgcm/histories/secondary/OctoberNovember2003/OctoberNovember2003_v1/303.nc

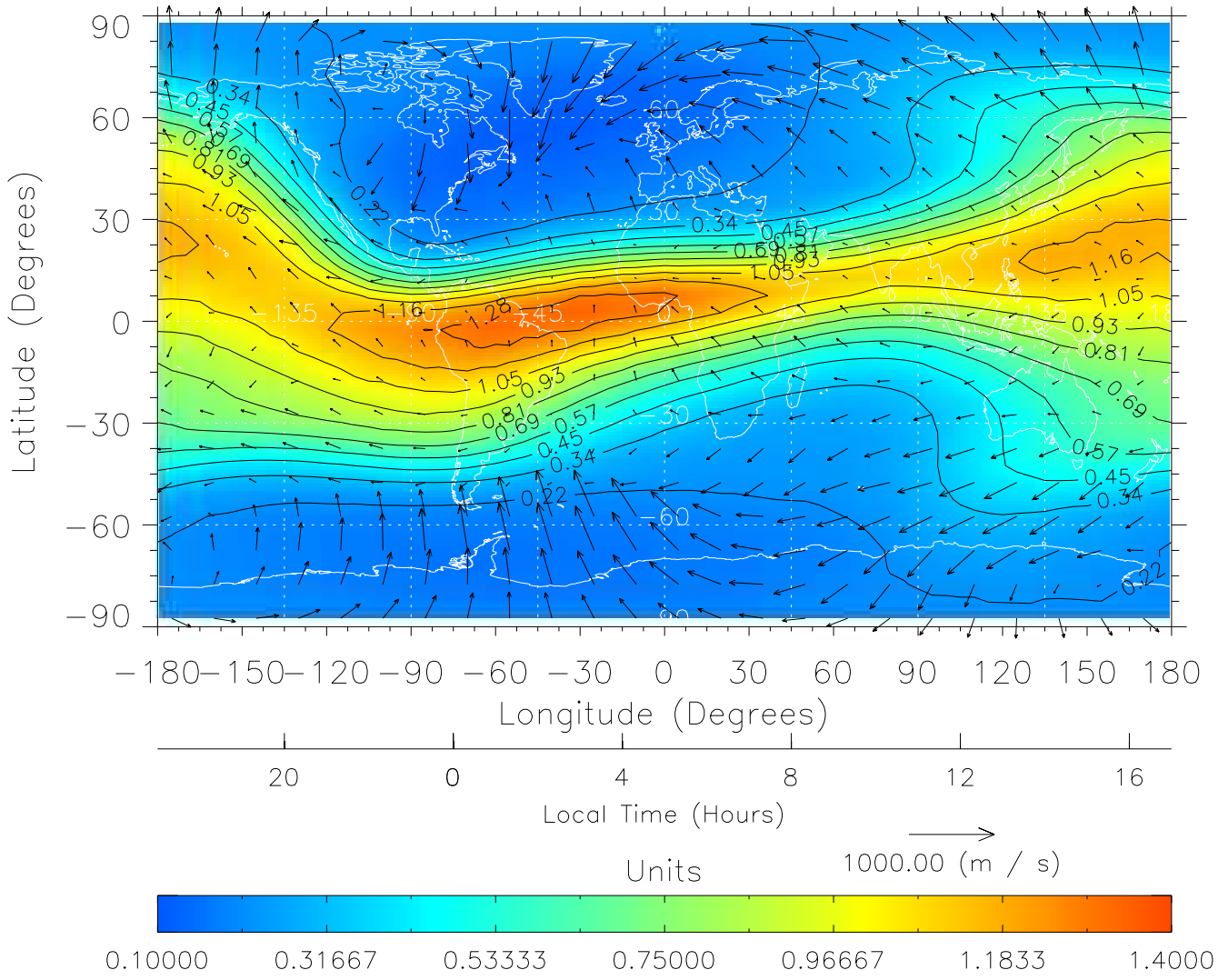
TIME-GCM MAP $\Sigma O/N_2$ with Neutral Wind vectors
ZP = 2.00 UT = 4.00 DOY = 303



Created: Thu Mar 10 14:21:46 2005

From: /home/tgcm/histories/secondary/OctoberNovember2003/OctoberNovember2003_v1/303.nc

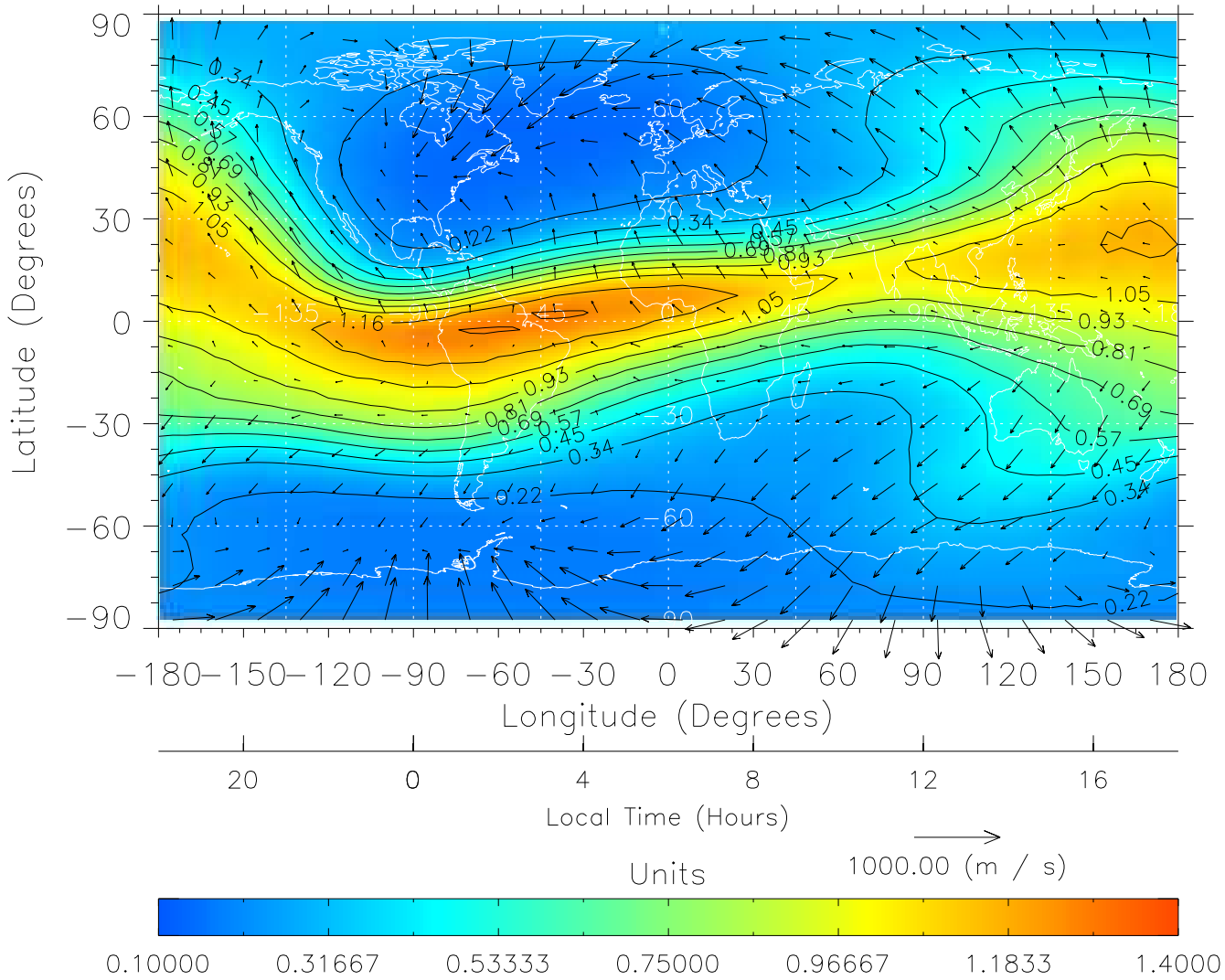
TIME-GCM MAP $\Sigma O/N_2$ with Neutral Wind vectors
ZP = 2.00 UT = 5.00 DOY = 303



Created: Thu Mar 10 14:21:46 2005

From: /home/tgcm/histories/secondary/OctoberNovember2003/OctoberNovember2003_v1/303.nc

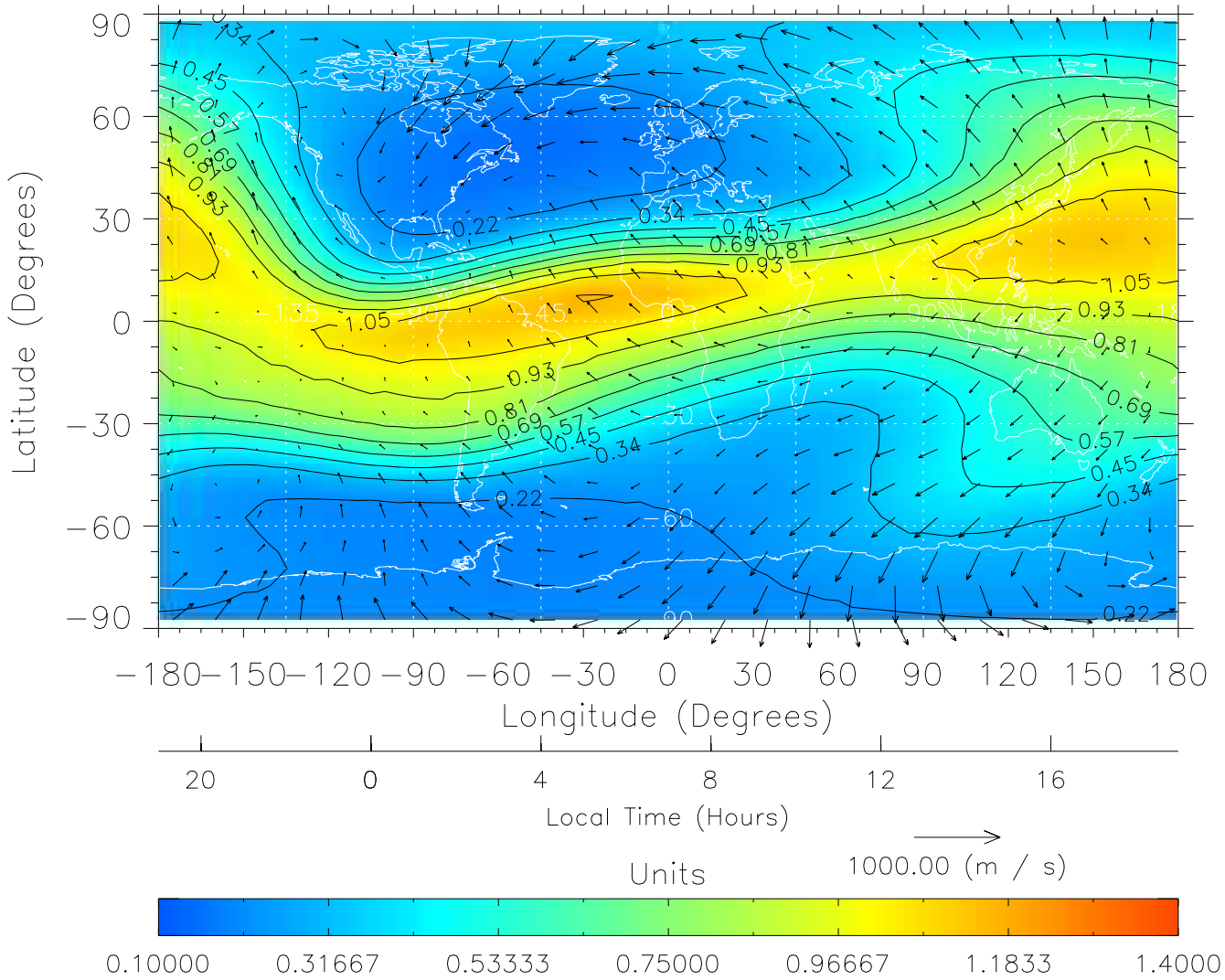
TIME-GCM MAP $\Sigma O/N_2$ with Neutral Wind vectors
ZP = 2.00 UT = 6.00 DOY = 303



Created: Thu Mar 10 14:21:47 2005

From: /home/tgcm/histories/secondary/OctoberNovember2003/OctoberNovember2003_v1/303.nc

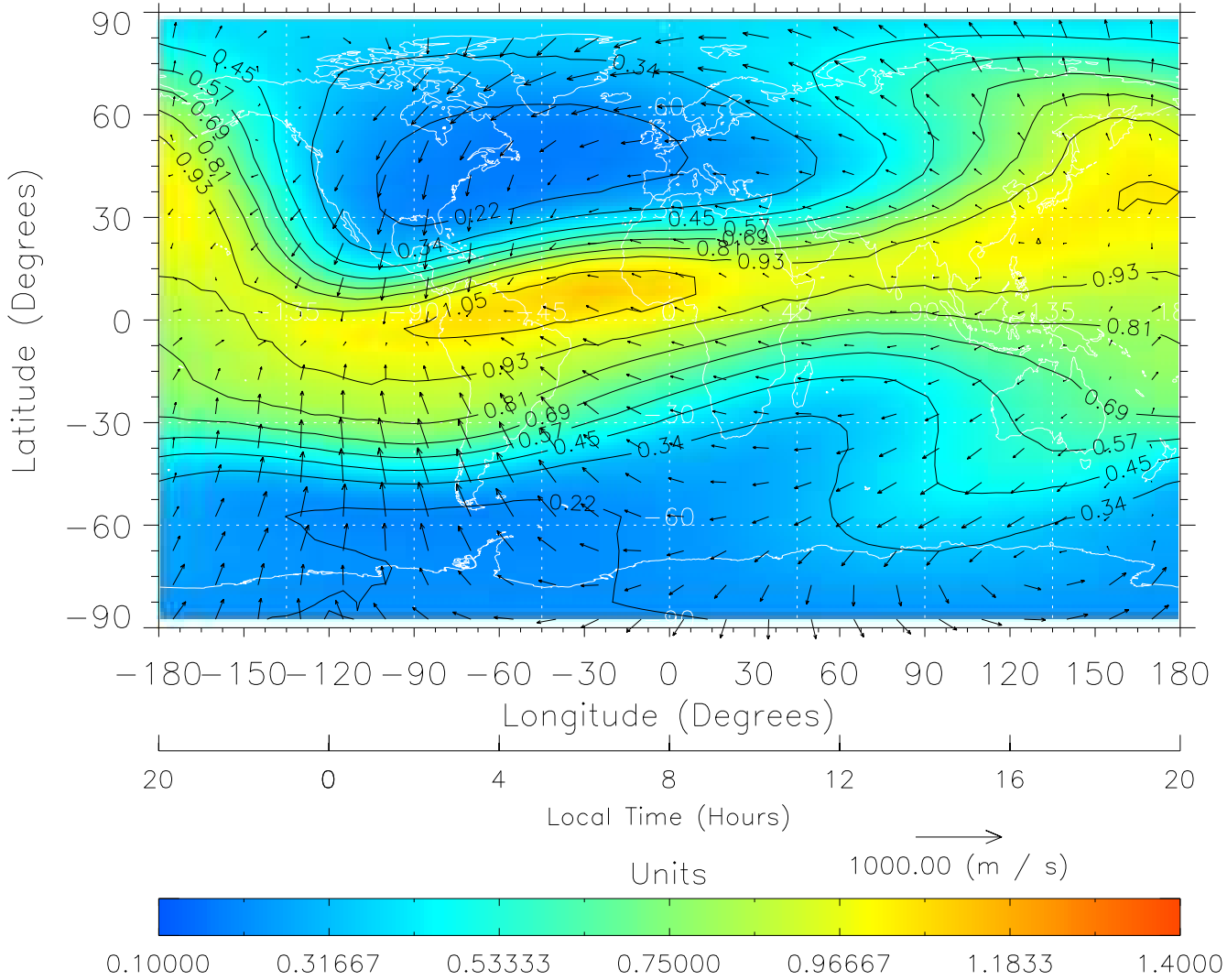
TIME-GCM MAP $\Sigma O/N_2$ with Neutral Wind vectors
 ZP = 2.00 UT = 7.00 DOY = 303



Created: Thu Mar 10 14:21:47 2005

From: /home/tgcm/histories/secondary/OctoberNovember2003/OctoberNovember2003_v1/303.nc

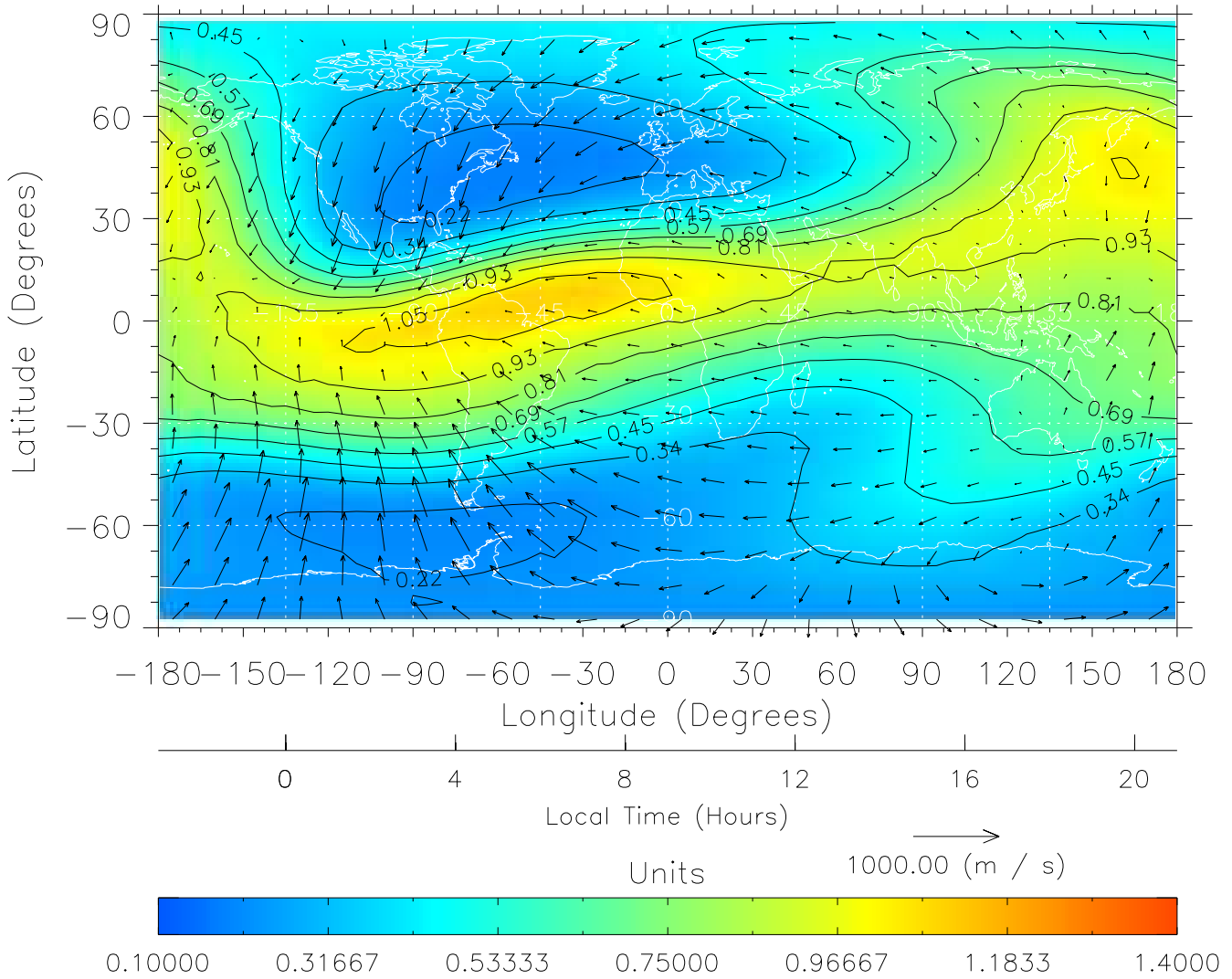
TIME-GCM MAP $\Sigma O/N_2$ with Neutral Wind vectors
ZP = 2.00 UT = 8.00 DOY = 303



Created: Thu Mar 10 14:21:47 2005

From: /home/tgcm/histories/secondary/OctoberNovember2003/OctoberNovember2003_v1/303.nc

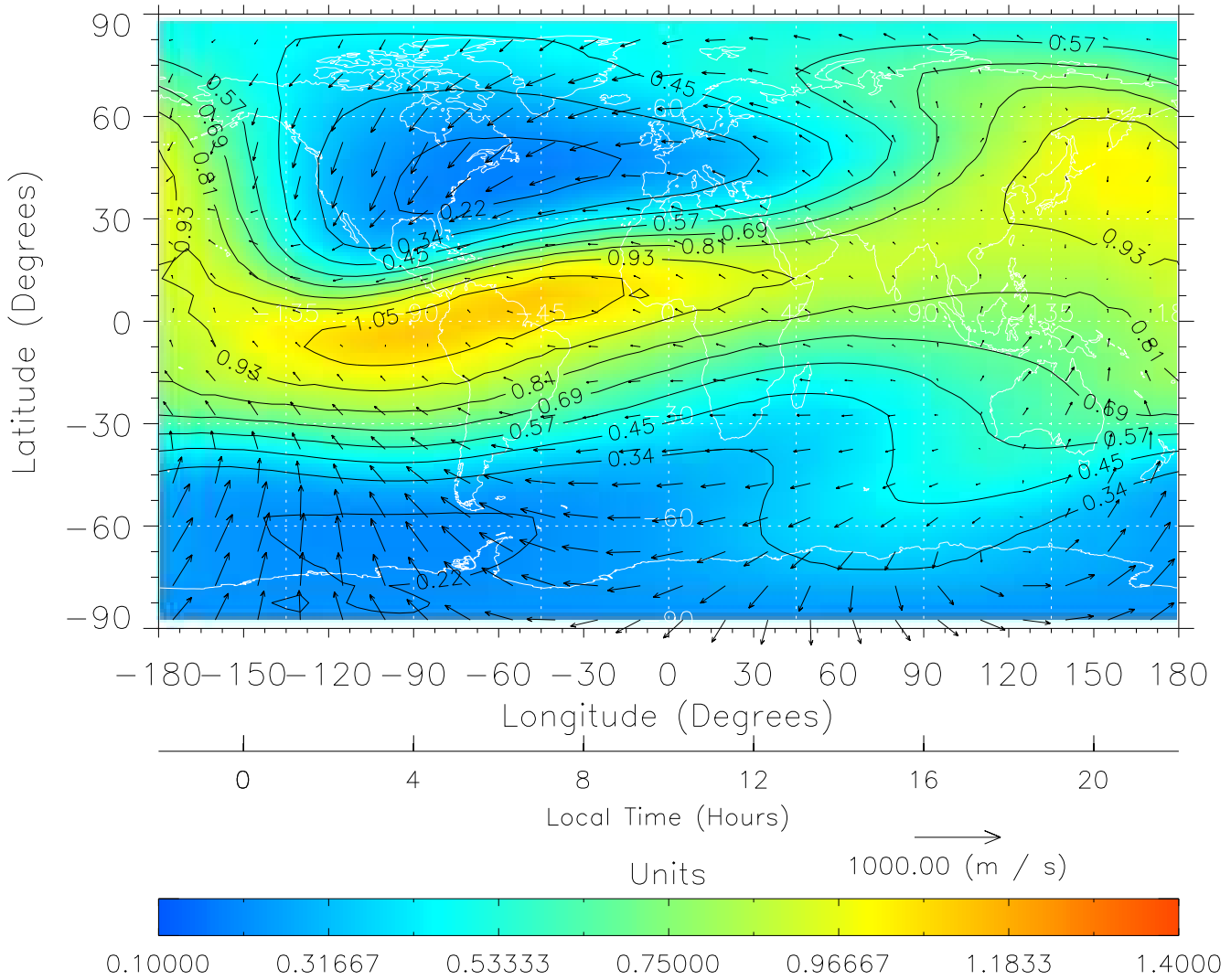
TIME-GCM MAP $\Sigma O/N_2$ with Neutral Wind vectors
ZP = 2.00 UT = 9.00 DOY = 303



Created: Thu Mar 10 14:21:48 2005

From: /home/tgcm/histories/secondary/OctoberNovember2003/OctoberNovember2003_v1/303.nc

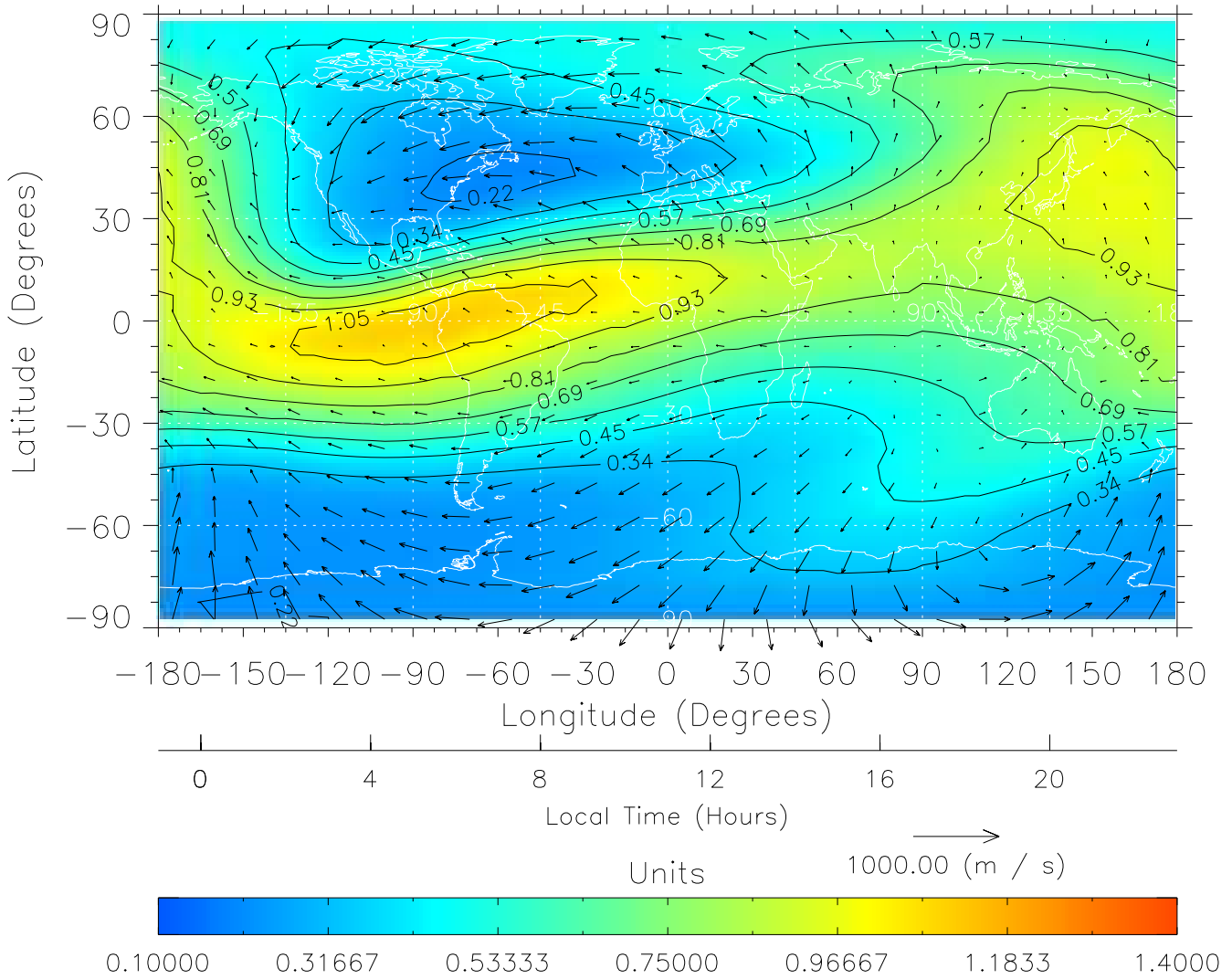
TIME-GCM MAP $\Sigma O/N_2$ with Neutral Wind vectors
ZP = 2.00 UT = 10.00 DOY = 303



Created: Thu Mar 10 14:21:49 2005

From: /home/tgcm/histories/secondary/OctoberNovember2003/OctoberNovember2003_v1/303.nc

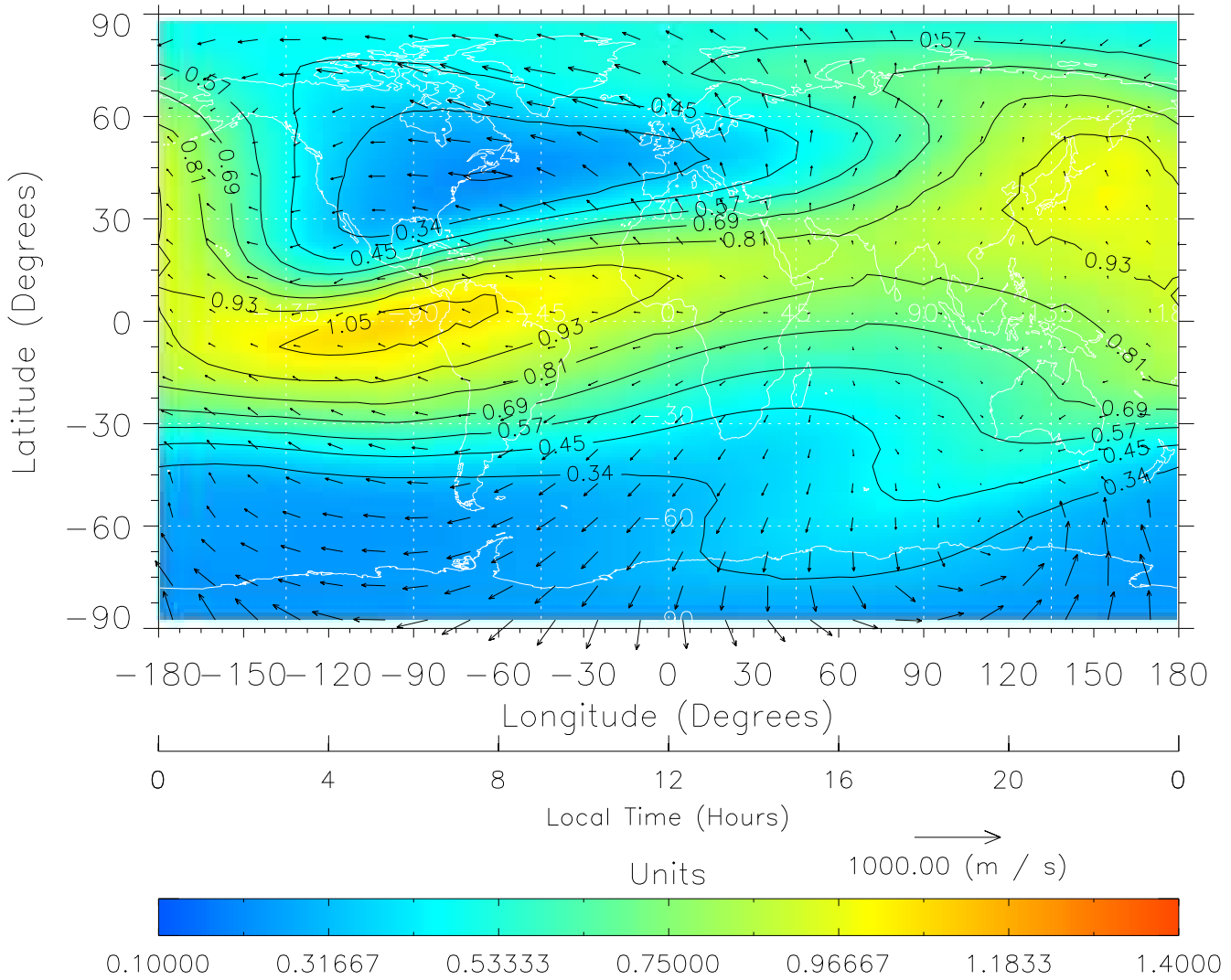
TIME-GCM MAP $\Sigma O/N_2$ with Neutral Wind vectors
ZP = 2.00 UT = 11.00 DOY = 303



Created: Thu Mar 10 14:21:49 2005

From: /home/tgcm/histories/secondary/OctoberNovember2003/OctoberNovember2003_v1/303.nc

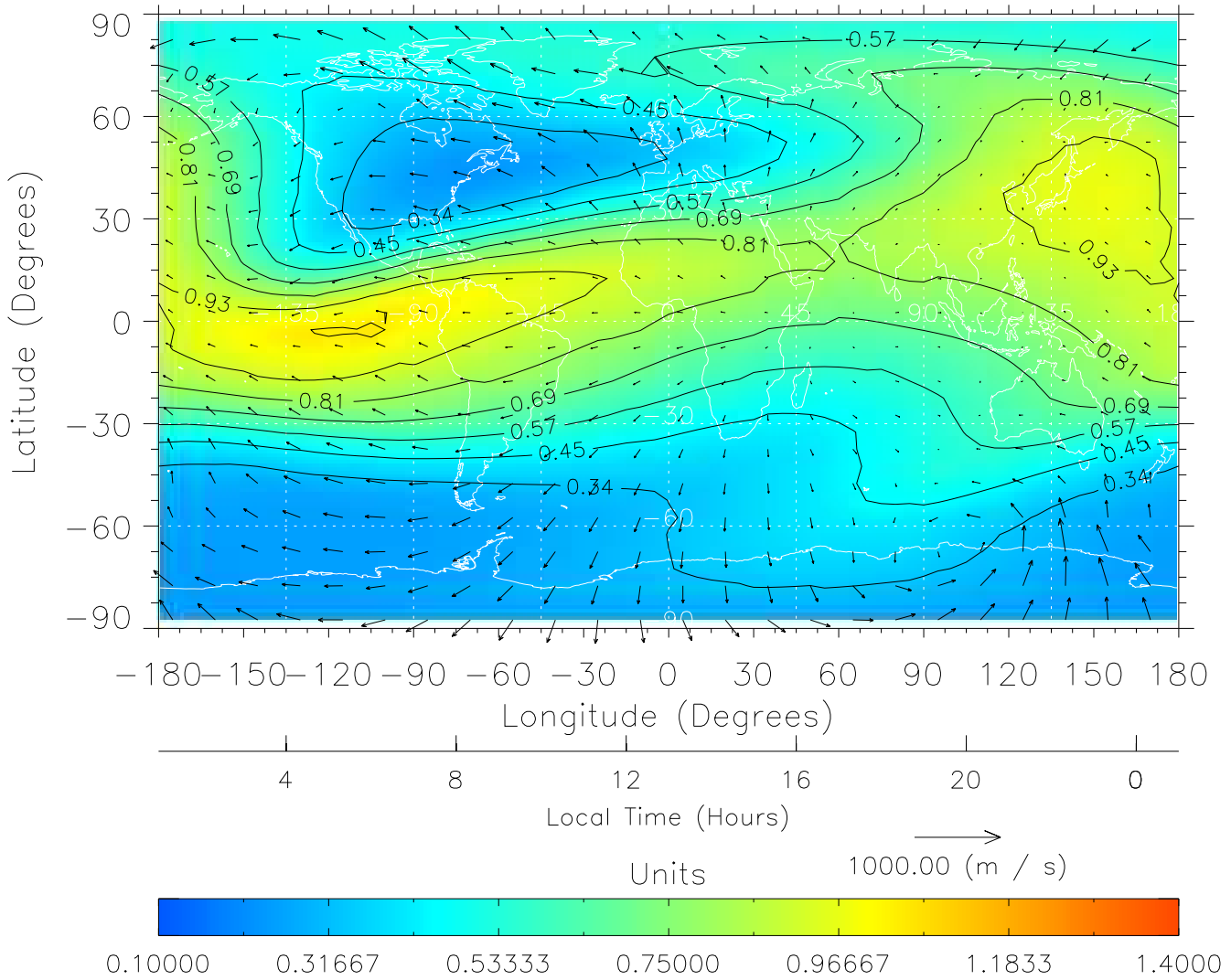
TIME-GCM MAP $\Sigma O/N_2$ with Neutral Wind vectors
ZP = 2.00 UT = 12.00 DOY = 303



Created: Thu Mar 10 14:21:50 2005

From: /home/tgcm/histories/secondary/OctoberNovember2003/OctoberNovember2003_v1/303.nc

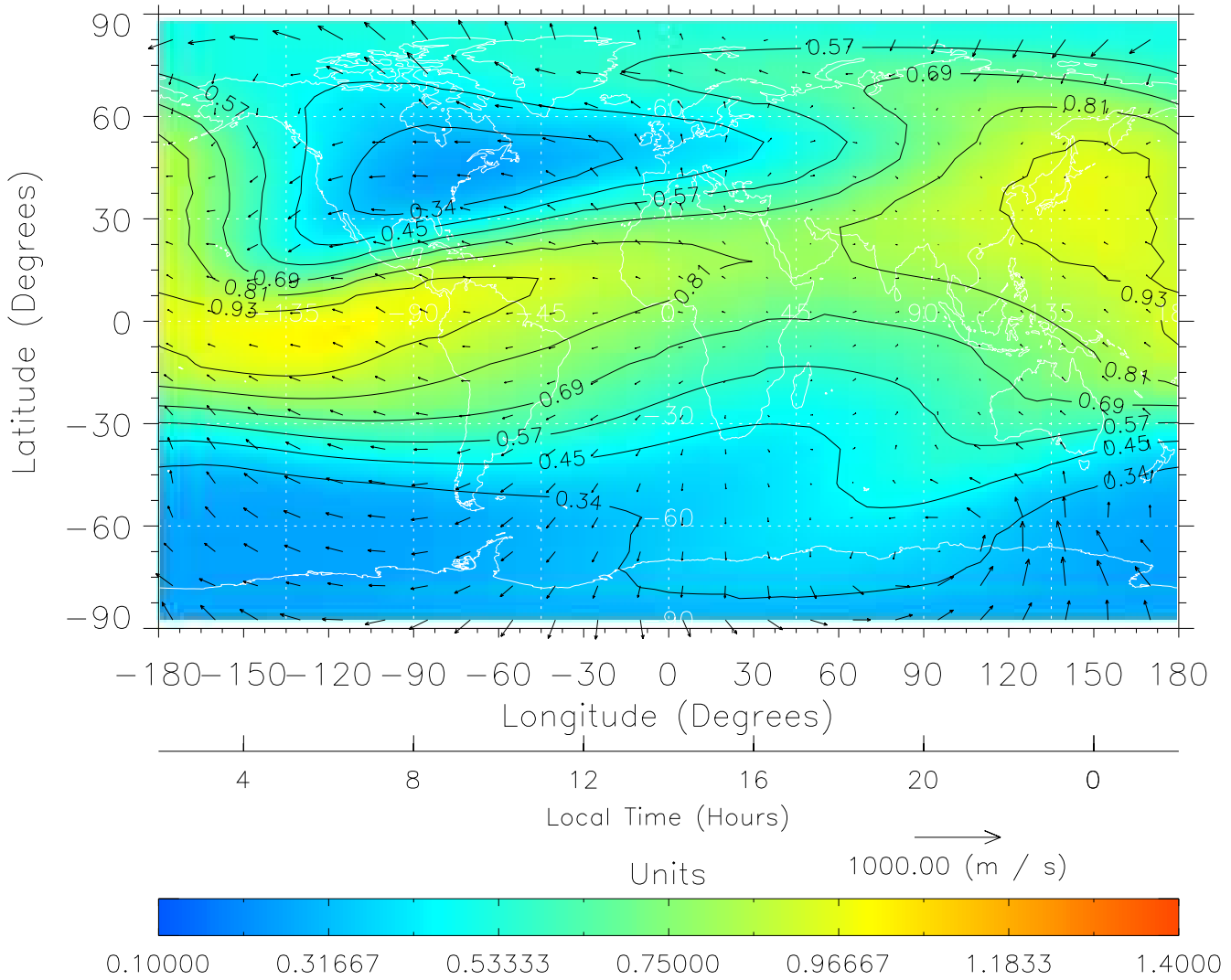
TIME-GCM MAP $\Sigma O/N_2$ with Neutral Wind vectors
ZP = 2.00 UT = 13.00 DOY = 303



Created: Thu Mar 10 14:21:50 2005

From: /home/tgcm/histories/secondary/OctoberNovember2003/OctoberNovember2003_v1/303.nc

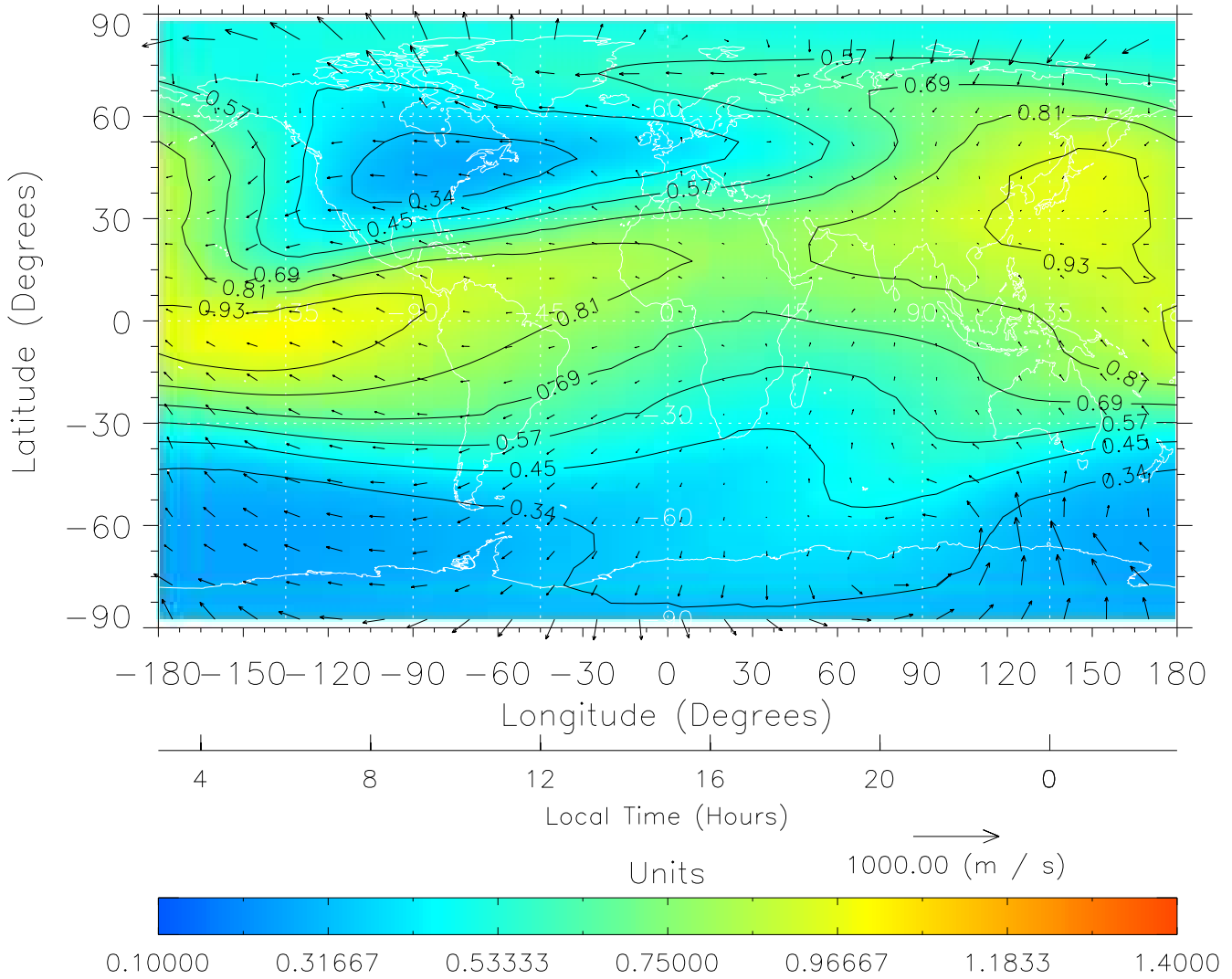
TIME-GCM MAP $\Sigma O/N_2$ with Neutral Wind vectors
ZP = 2.00 UT = 14.00 DOY = 303



Created: Thu Mar 10 14:21:51 2005

From: /home/tgcm/histories/secondary/OctoberNovember2003/OctoberNovember2003_v1/303.nc

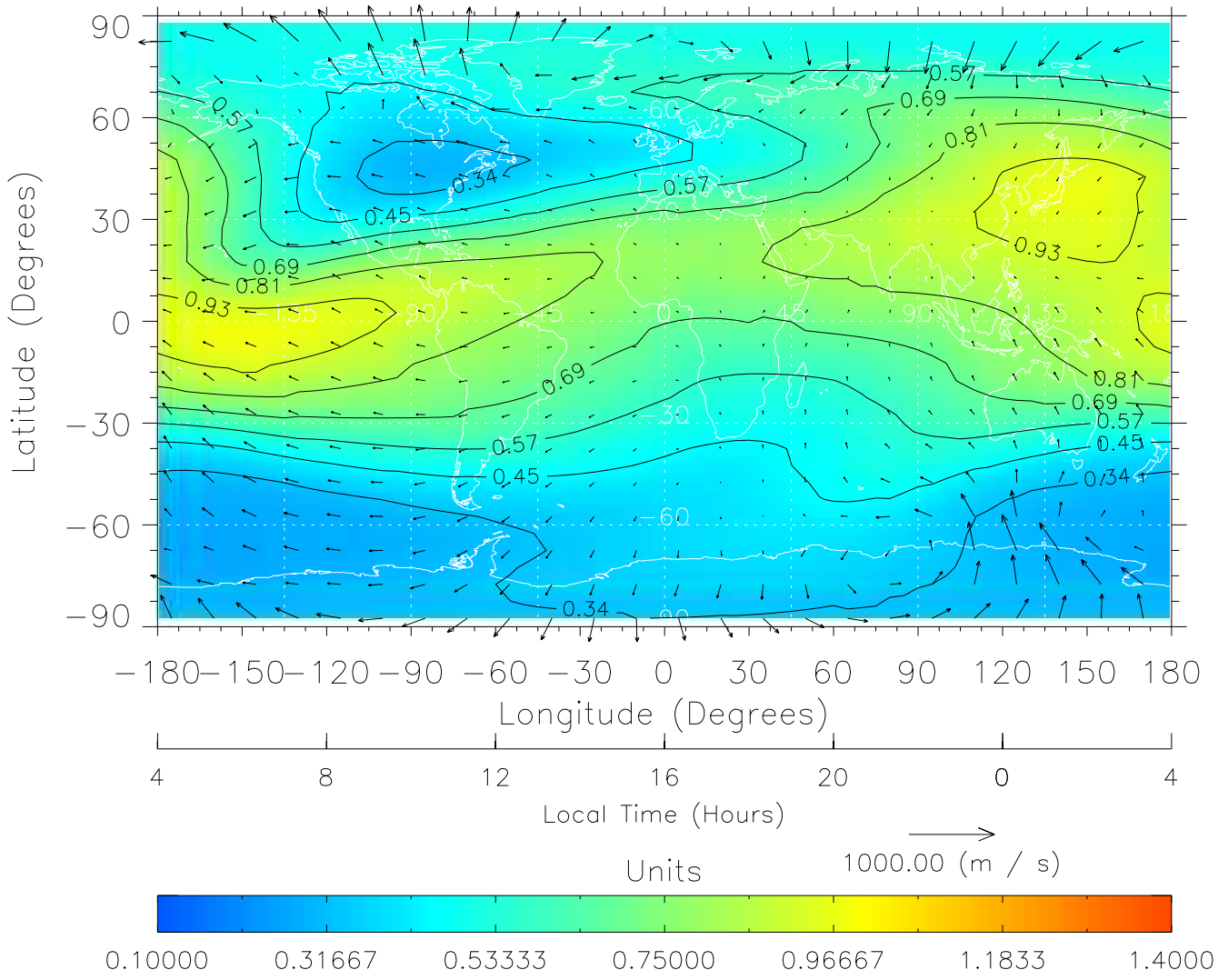
TIME-GCM MAP $\Sigma O/N_2$ with Neutral Wind vectors
ZP = 2.00 UT = 15.00 DOY = 303



Created: Thu Mar 10 14:21:51 2005

From: /home/tgcm/histories/secondary/OctoberNovember2003/OctoberNovember2003_v1/303.nc

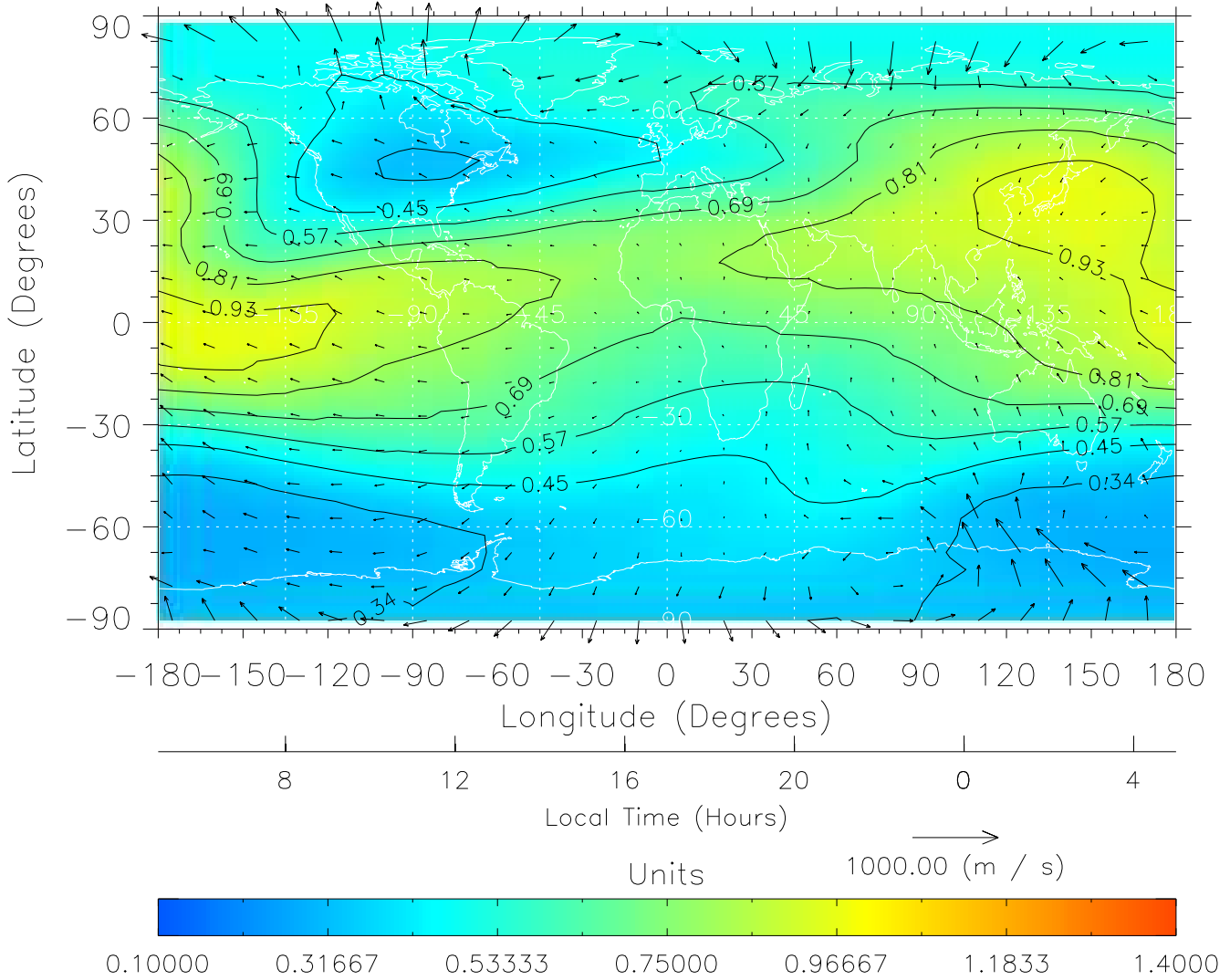
TIME-GCM MAP $\Sigma O/N_2$ with Neutral Wind vectors
ZP = 2.00 UT = 16.00 DOY = 303



Created: Thu Mar 10 14:21:52 2005

From: /home/tgcm/histories/secondary/OctoberNovember2003/OctoberNovember2003_v1/303.nc

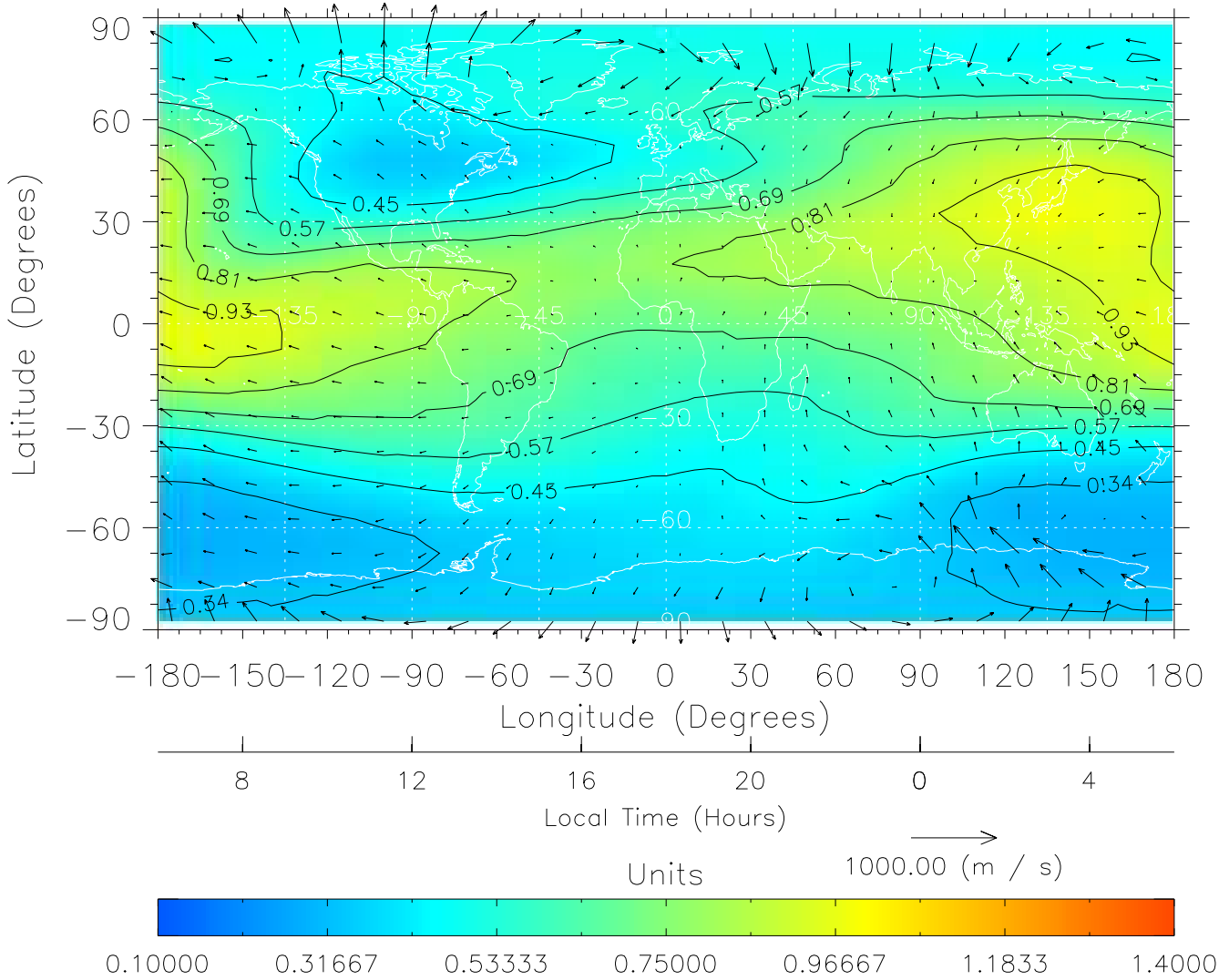
TIME-GCM MAP $\Sigma O/N_2$ with Neutral Wind vectors
ZP = 2.00 UT = 17.00 DOY = 303



Created: Thu Mar 10 14:21:52 2005

From: /home/tgcm/histories/secondary/OctoberNovember2003/OctoberNovember2003_v1/303.nc

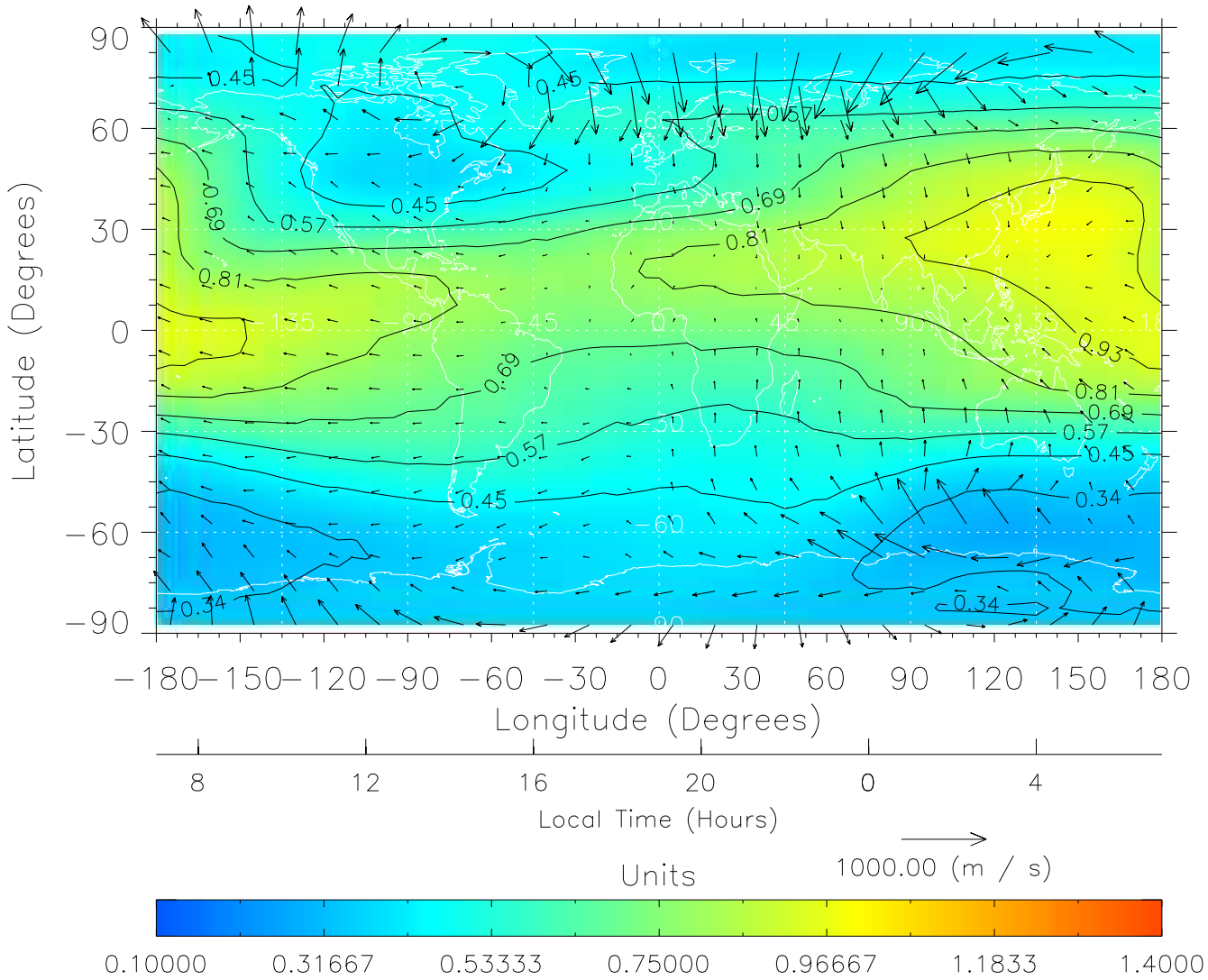
TIME-GCM MAP $\Sigma O/N_2$ with Neutral Wind vectors
ZP = 2.00 UT = 18.00 DOY = 303



Created: Thu Mar 10 14:21:52 2005

From: /home/tgcm/histories/secondary/OctoberNovember2003/OctoberNovember2003_v1/303.nc

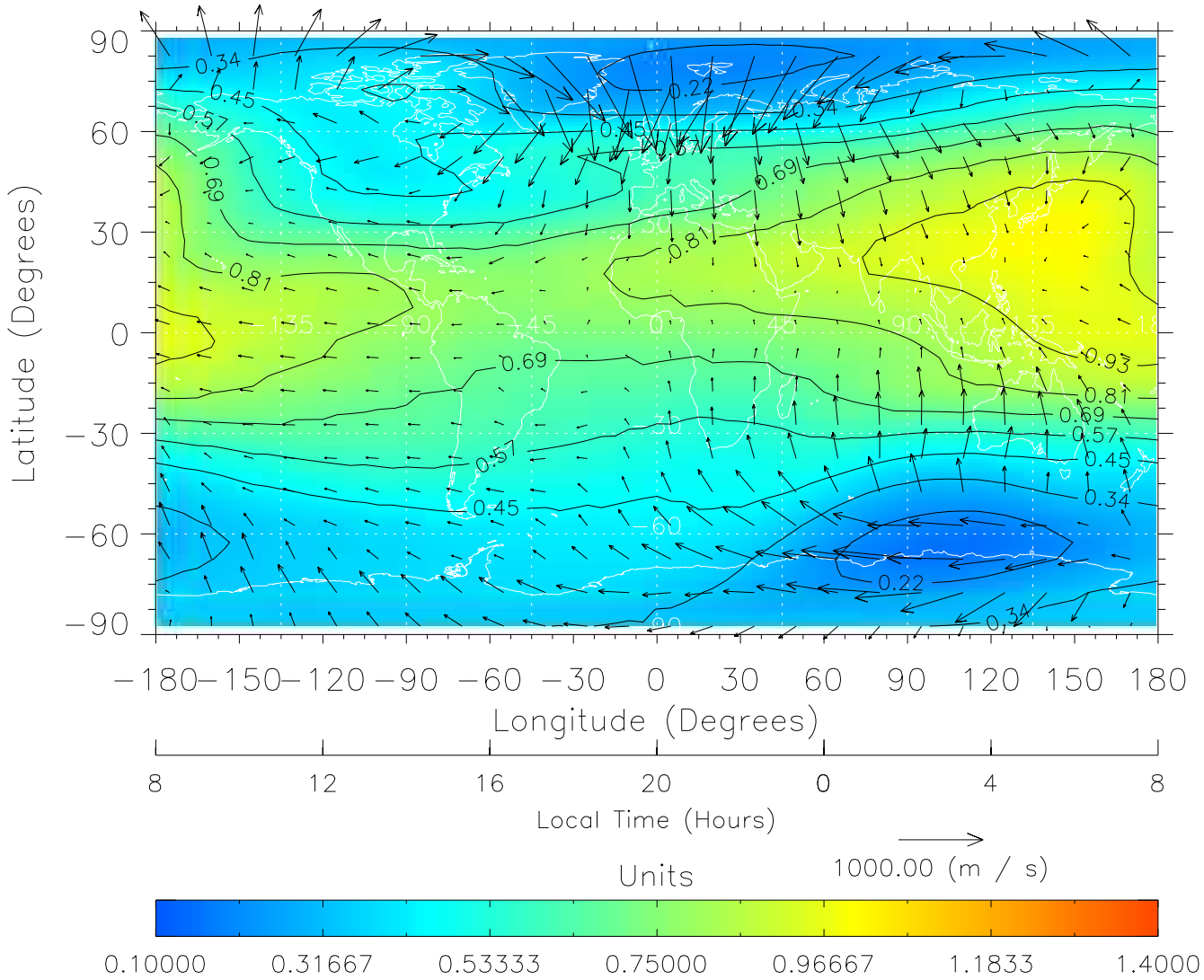
TIME-GCM MAP $\Sigma O/N_2$ with Neutral Wind vectors
 ZP = 2.00 UT = 19.00 DOY = 303



Created: Thu Mar 10 14:21:53 2005

From: /home/tgcm/histories/secondary/OctoberNovember2003/OctoberNovember2003_v1/303.nc

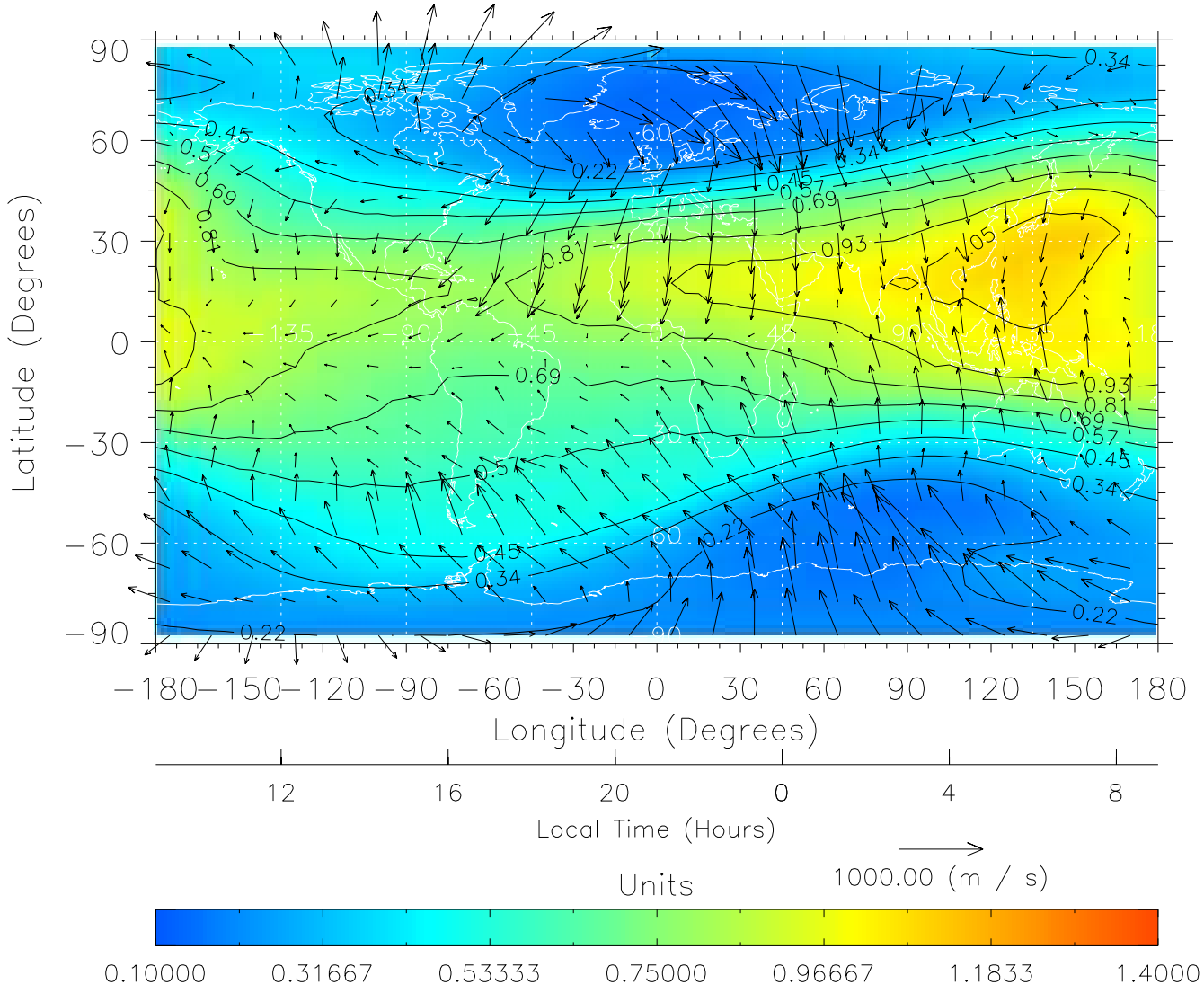
TIME-GCM MAP $\Sigma O/N_2$ with Neutral Wind vectors
ZP = 2.00 UT = 20.00 DOY = 303



Created: Thu Mar 10 14:21:53 2005

From: /home/tgcm/histories/secondary/OctoberNovember2003/OctoberNovember2003_v1/303.nc

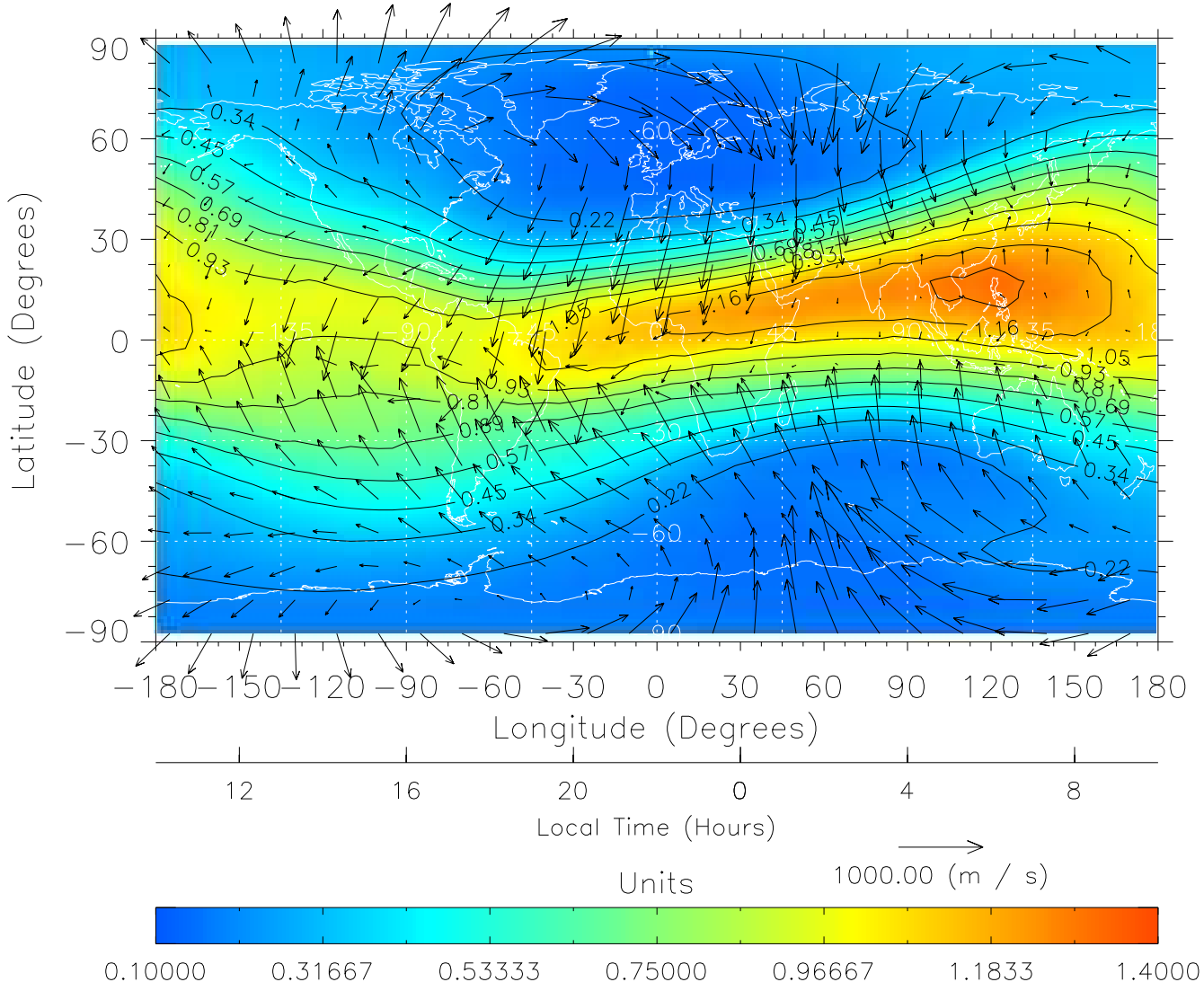
TIME-GCM MAP $\Sigma O/N_2$ with Neutral Wind vectors
ZP = 2.00 UT = 21.00 DOY = 303



Created: Thu Mar 10 14:21:54 2005

From: /home/tgcm/histories/secondary/OctoberNovember2003/OctoberNovember2003_v1/303.nc

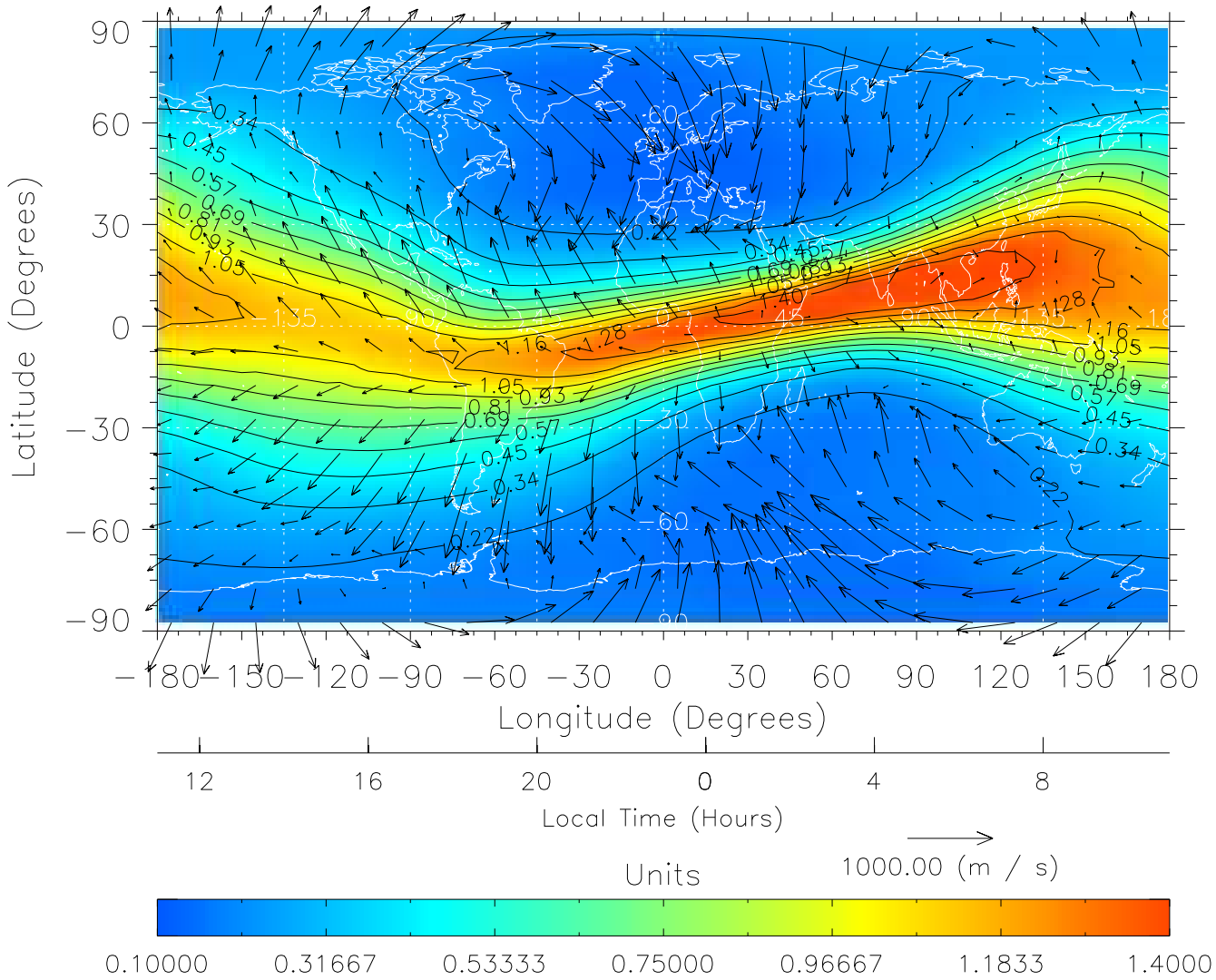
TIME-GCM MAP $\Sigma O/N_2$ with Neutral Wind vectors
ZP = 2.00 UT = 22.00 DOY = 303



Created: Thu Mar 10 14:21:54 2005

From: /home/tgcm/histories/secondary/OctoberNovember2003/OctoberNovember2003_v1/303.nc

TIME-GCM MAP $\Sigma O/N_2$ with Neutral Wind vectors
ZP = 2.00 UT = 23.00 DOY = 303



Created: Thu Mar 10 14:21:55 2005

From: /home/tgcm/histories/secondary/OctoberNovember2003/OctoberNovember2003_v1/303.nc