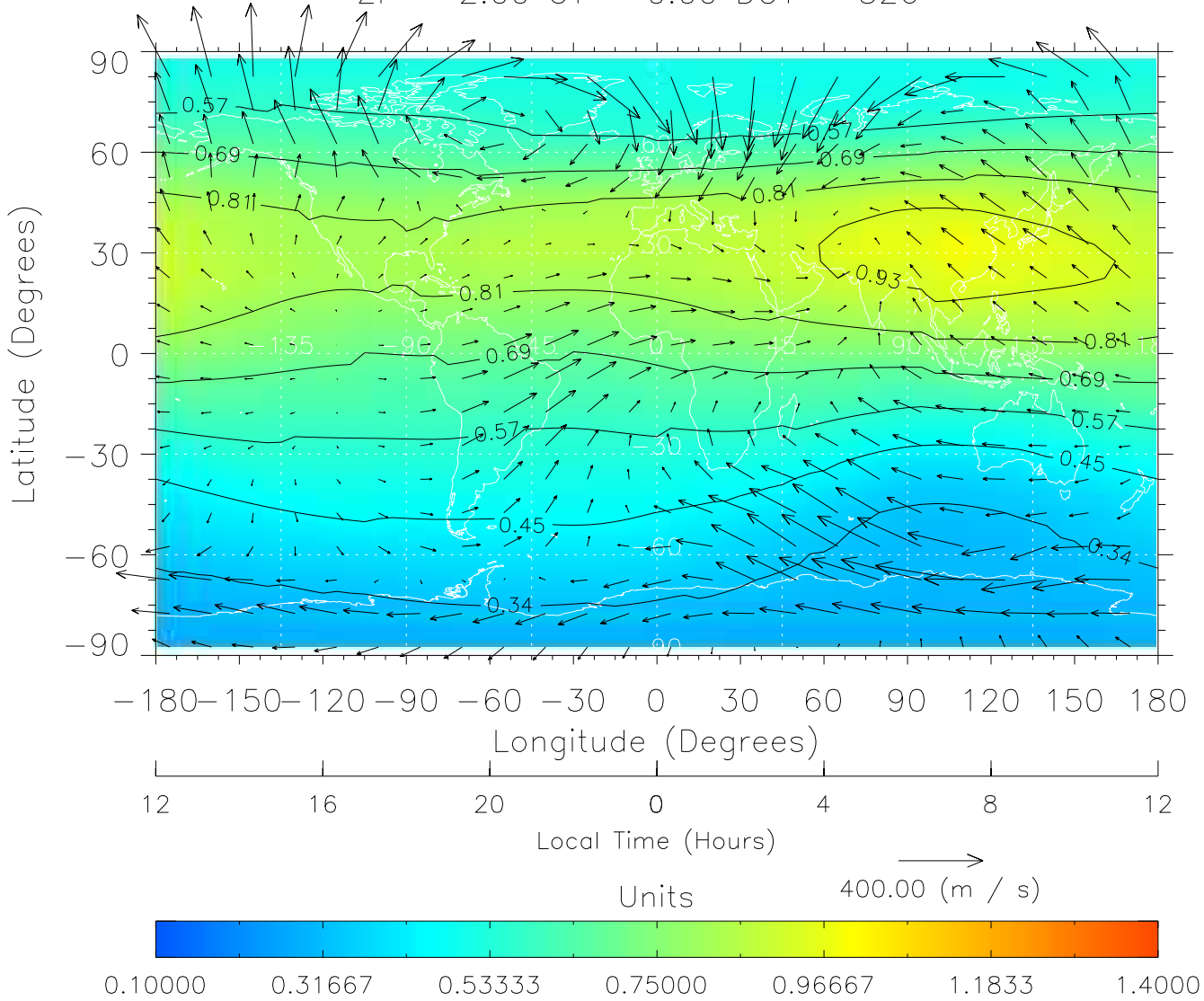


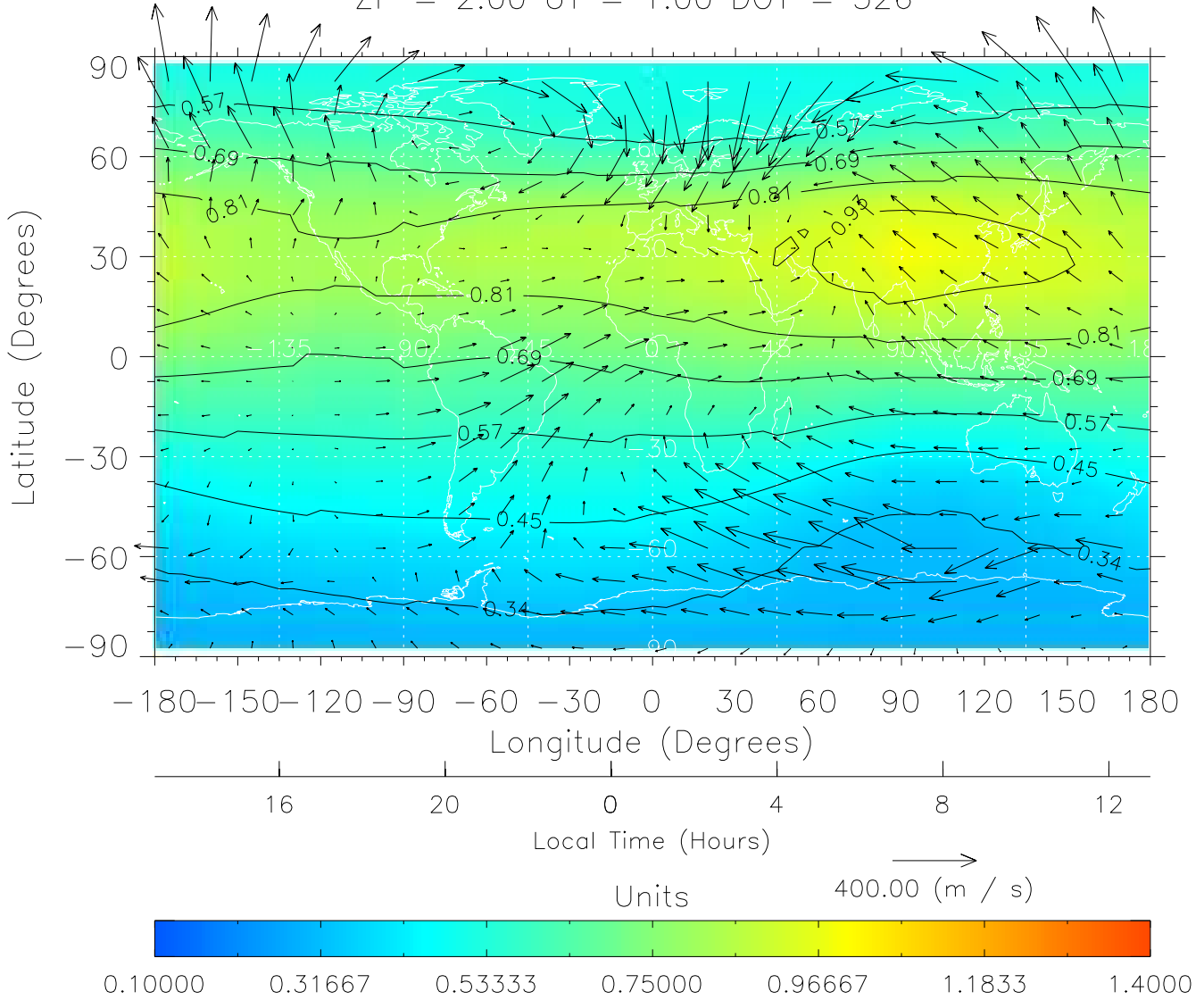
TIME-GCM MAP $\Sigma O/N_2$ with Neutral Wind vectors
ZP = 2.00 UT = 0.00 DOY = 326



Created: Fri Mar 11 14:11:24 2005

From: /tgcm/histories/secondary/November2003/November2003_AMIE_v3_50_65/326.nc

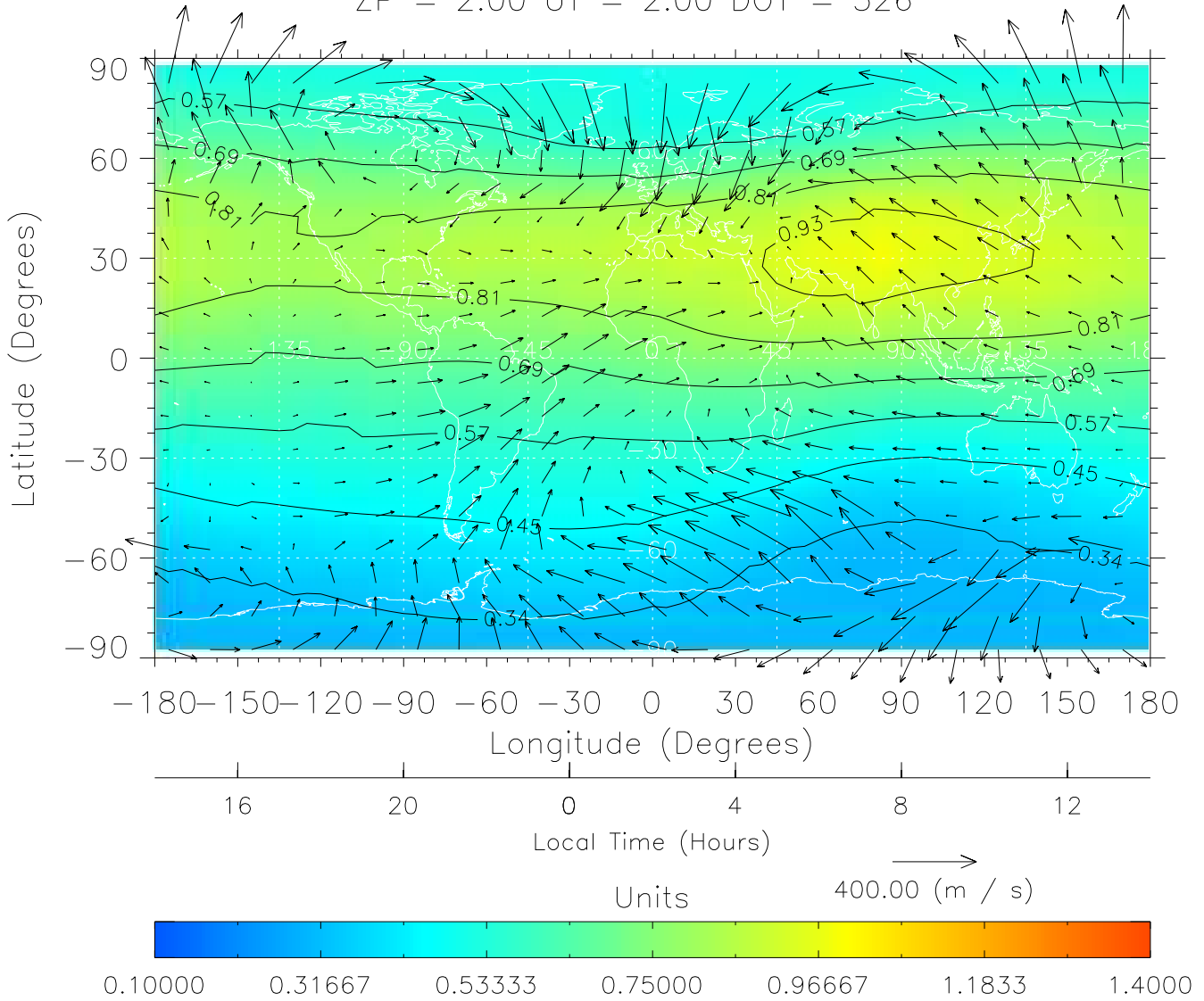
TIME-GCM MAP $\Sigma O/N_2$ with Neutral Wind vectors
ZP = 2.00 UT = 1.00 DOY = 326



Created: Fri Mar 11 14:11:24 2005

From: /tgcm/histories/secondary/November2003/November2003_AMIE_v3_50_65/326.nc

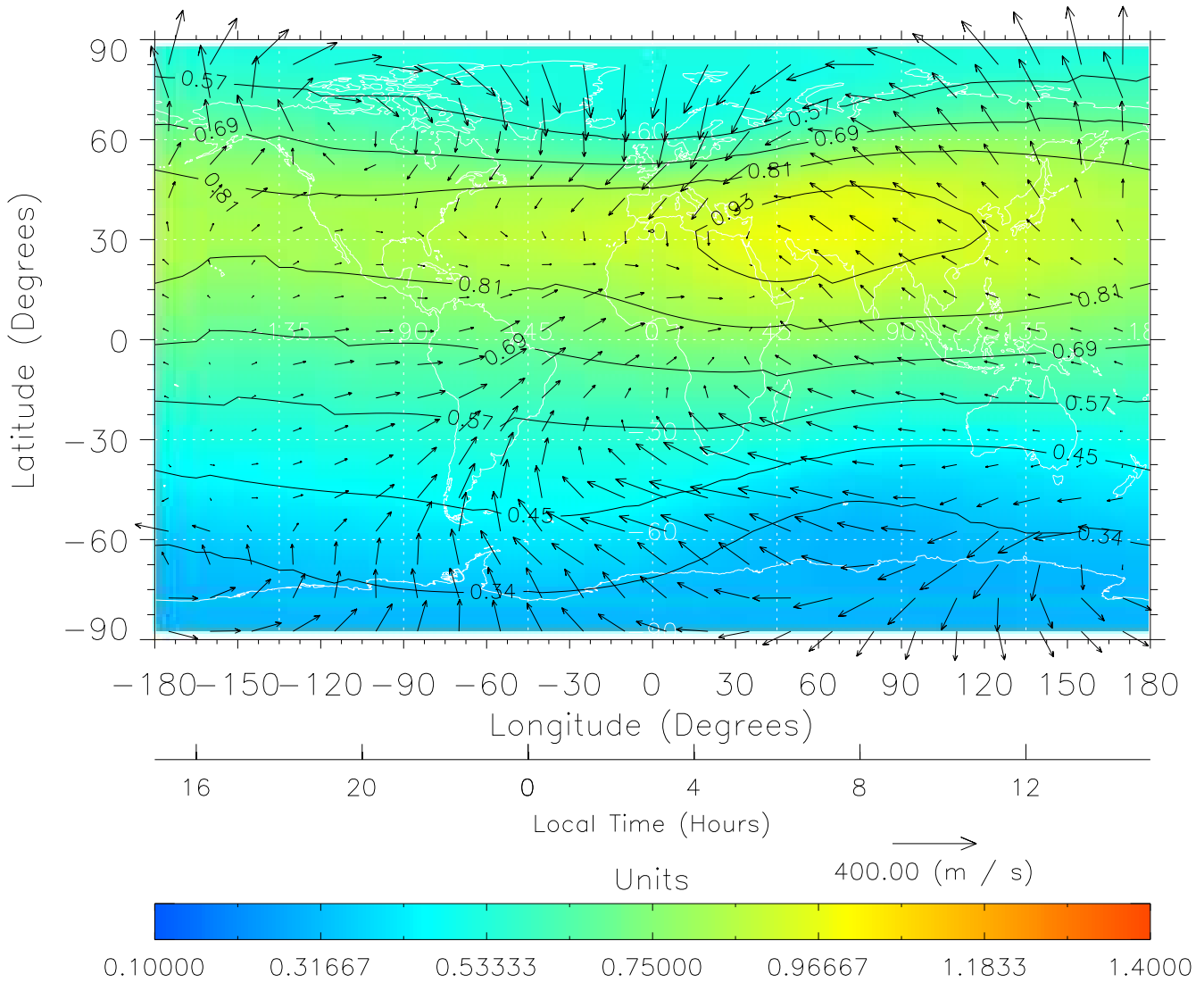
TIME-GCM MAP $\Sigma O/N_2$ with Neutral Wind vectors
ZP = 2.00 UT = 2.00 DOY = 326



Created: Fri Mar 11 14:11:25 2005

From: /tgcm/histories/secondary/November2003/November2003_AMIE_v3_50_65/326.nc

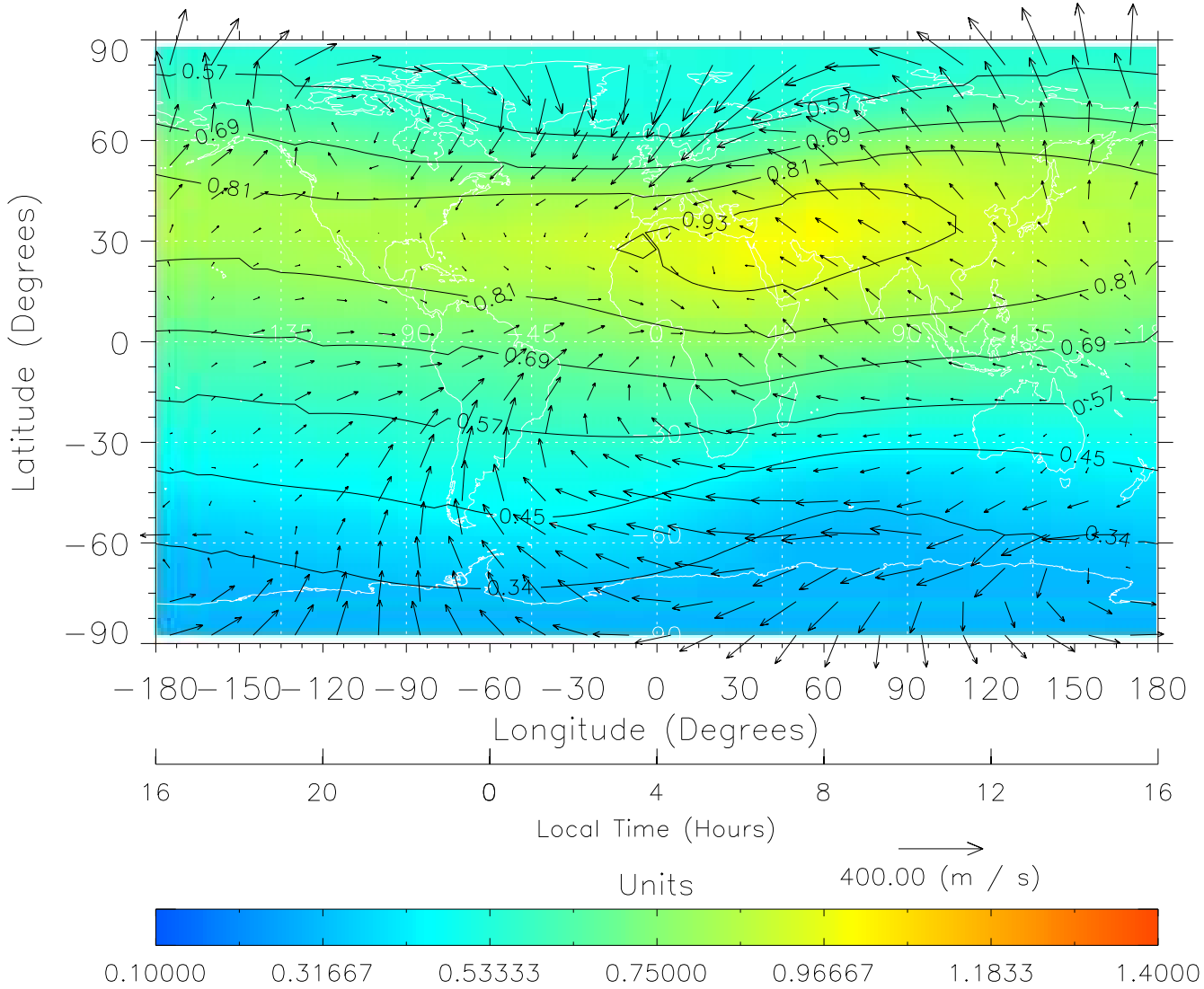
TIME-GCM MAP $\Sigma O/N_2$ with Neutral Wind vectors
ZP = 2.00 UT = 3.00 DOY = 326



Created: Fri Mar 11 14:11:25 2005

From: /tgcm/histories/secondary/November2003/November2003_AMIE_v3_50_65/326.nc

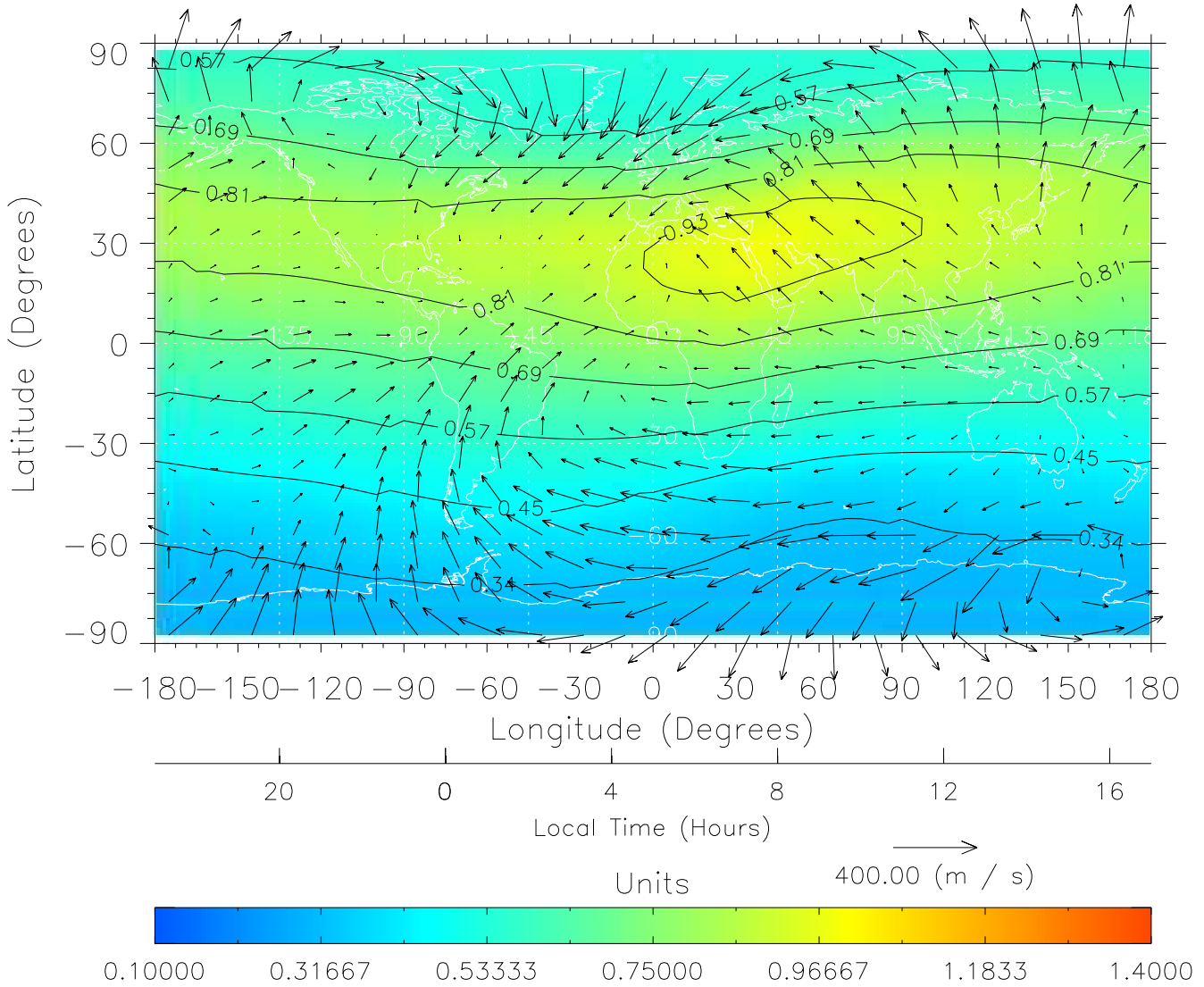
TIME-GCM MAP $\Sigma O/N_2$ with Neutral Wind vectors
ZP = 2.00 UT = 4.00 DOY = 326



Created: Fri Mar 11 14:11:26 2005

From: /tgcm/histories/secondary/November2003/November2003_AMIE_v3_50_65/326.nc

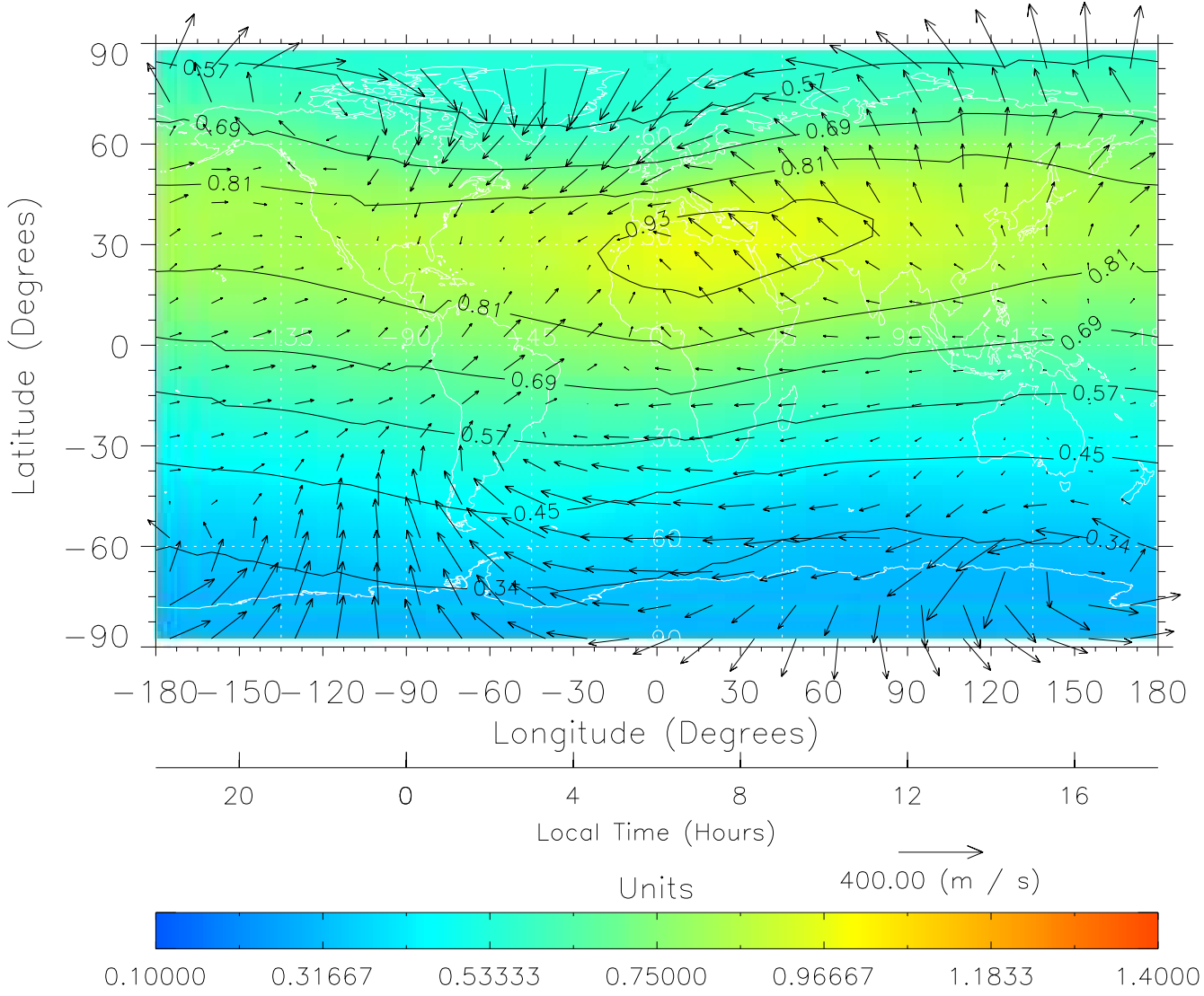
TIME-GCM MAP $\Sigma O/N_2$ with Neutral Wind vectors
ZP = 2.00 UT = 5.00 DOY = 326



Created: Fri Mar 11 14:11:26 2005

From: /tgcm/histories/secondary/November2003/November2003_AMIE_v3_50_65/326.nc

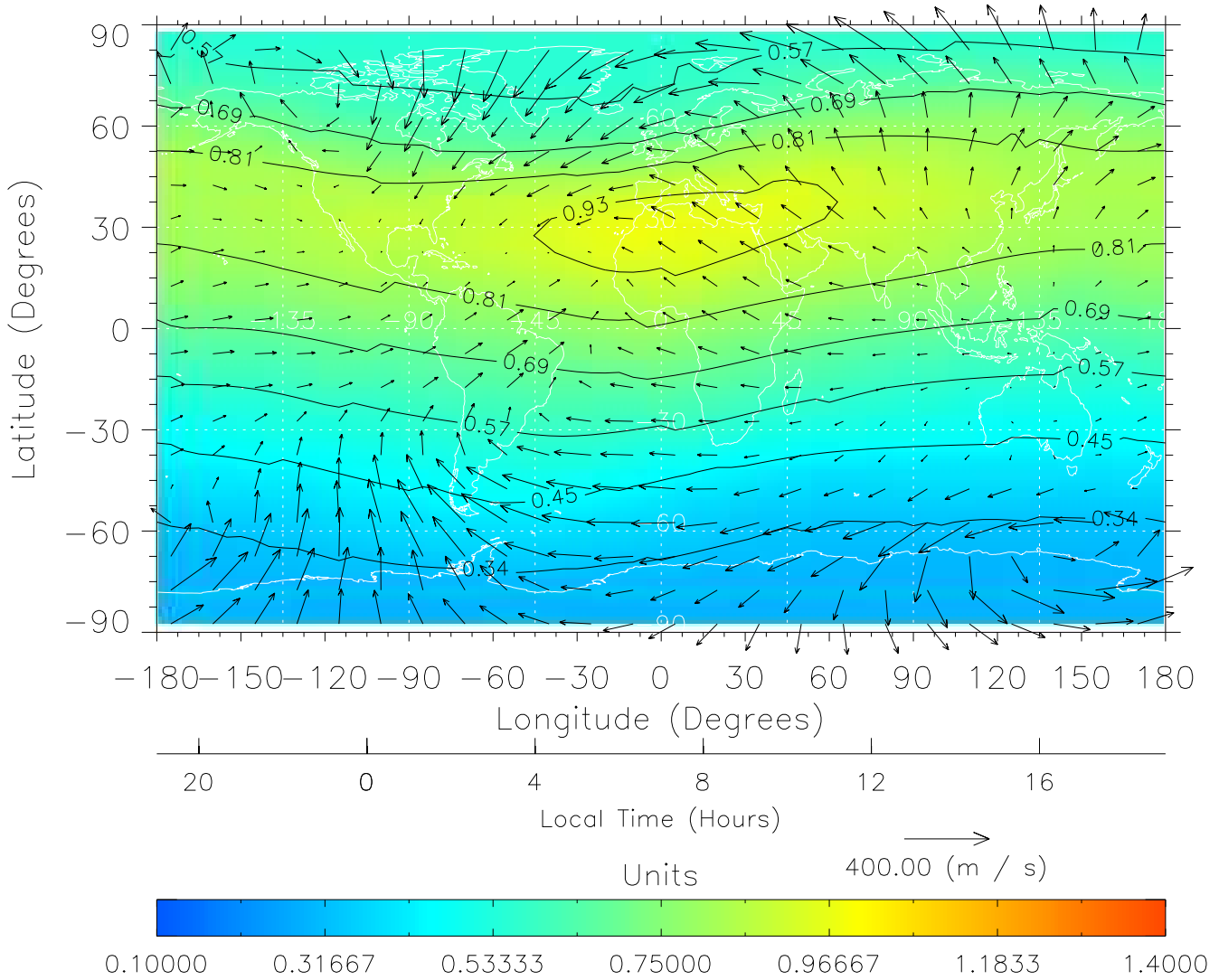
TIME-GCM MAP $\Sigma O/N_2$ with Neutral Wind vectors
ZP = 2.00 UT = 6.00 DOY = 326



Created: Fri Mar 11 14:11:26 2005

From: /tgcm/histories/secondary/November2003/November2003_AMIE_v3_50_65/326.nc

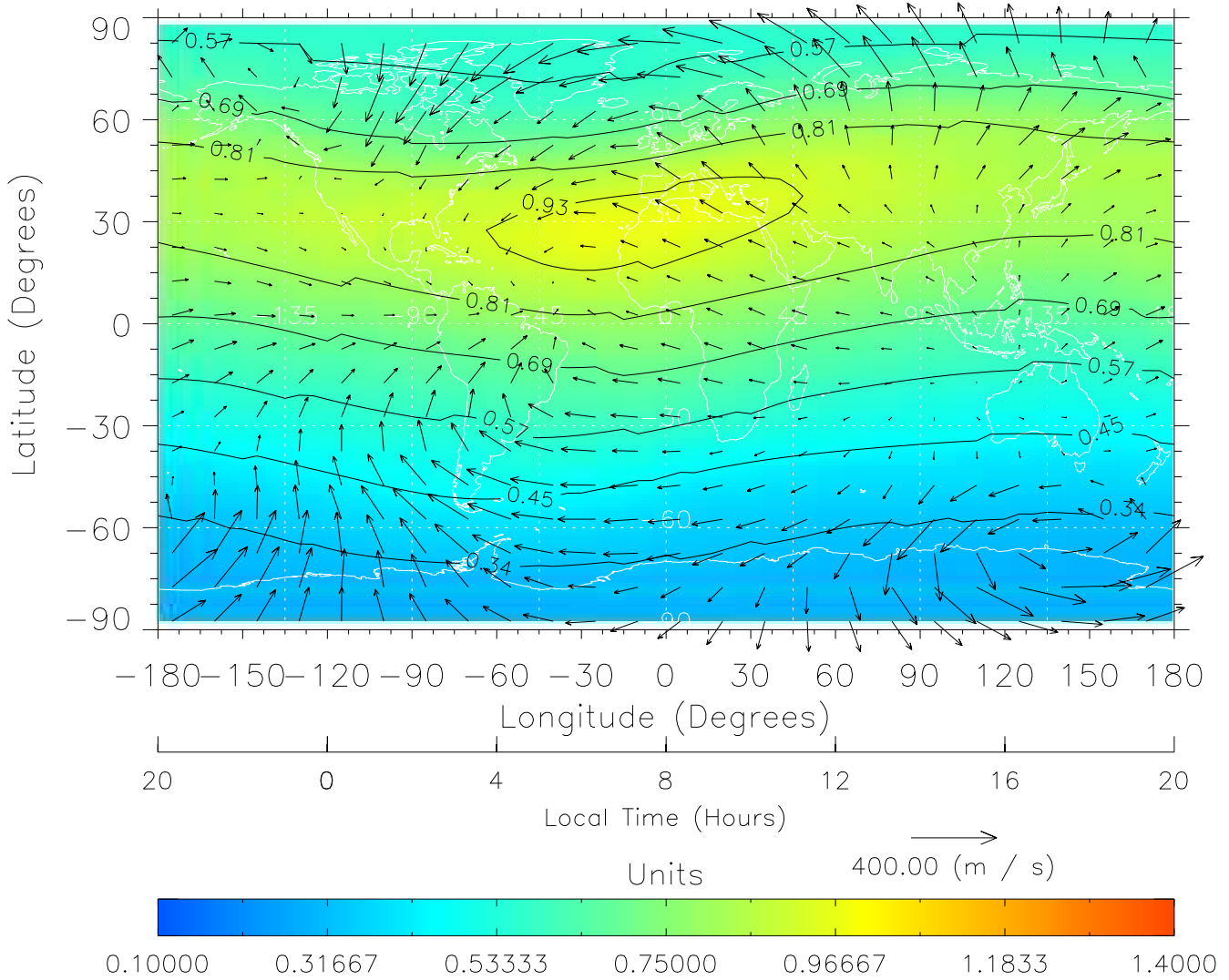
TIME-GCM MAP $\Sigma O/N_2$ with Neutral Wind vectors
ZP = 2.00 UT = 7.00 DOY = 326



Created: Fri Mar 11 14:11:27 2005

From: /tgcm/histories/secondary/November2003/November2003_AMIE_v3_50_65/326.nc

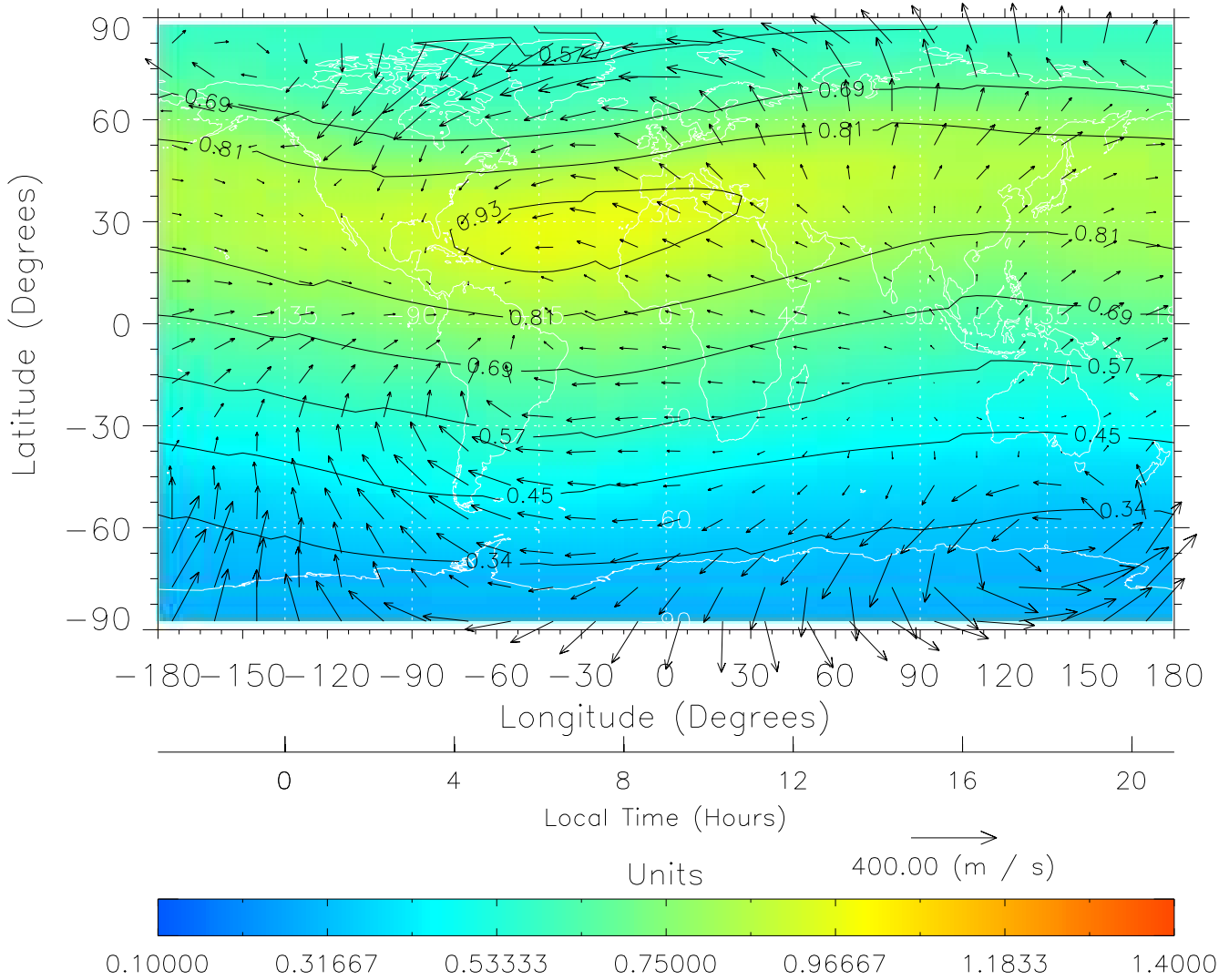
TIME-GCM MAP $\Sigma O/N_2$ with Neutral Wind vectors
ZP = 2.00 UT = 8.00 DOY = 326



Created: Fri Mar 11 14:11:27 2005

From: /tgcm/histories/secondary/November2003/November2003_AMIE_v3_50_65/326.nc

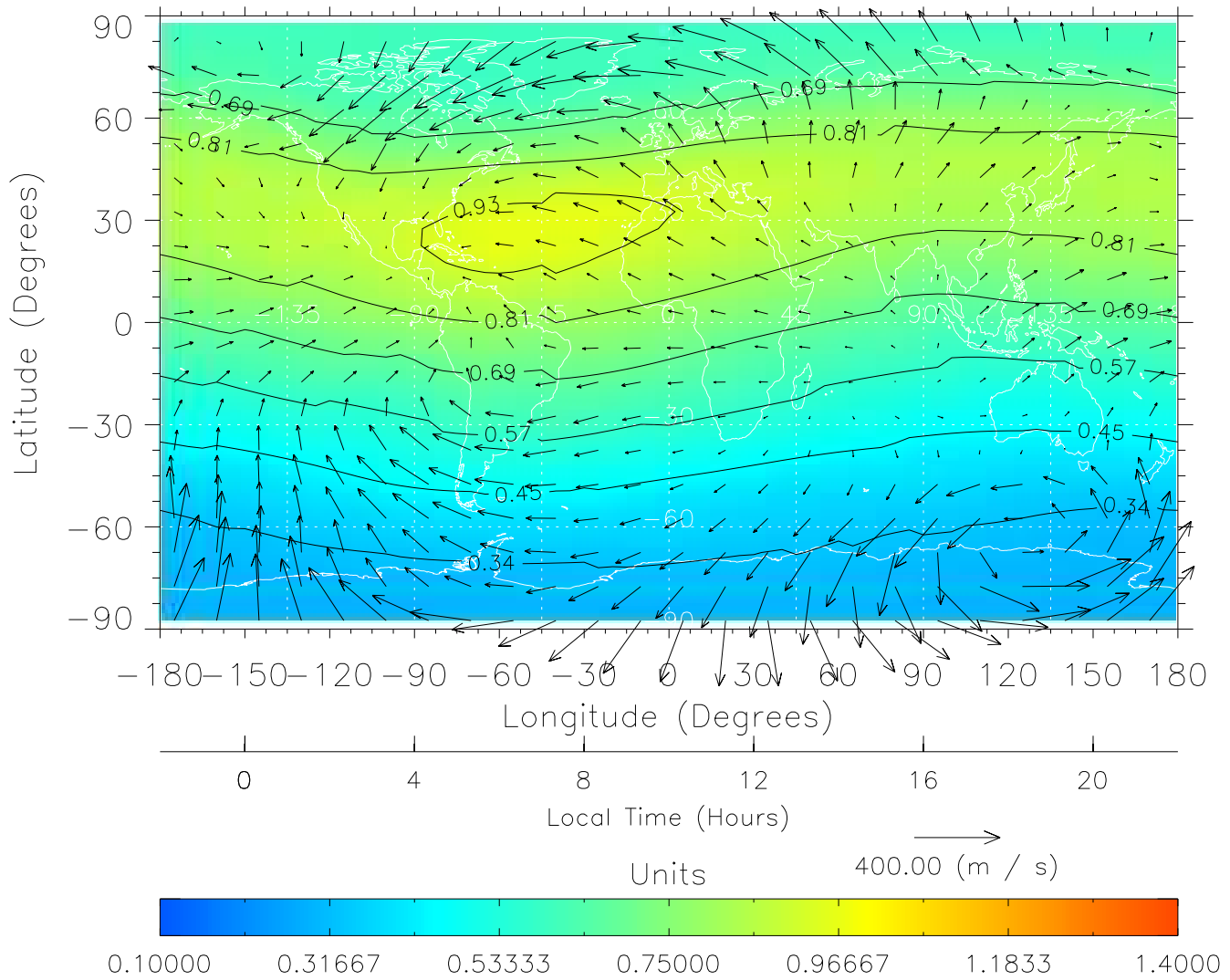
TIME-GCM MAP $\Sigma O/N_2$ with Neutral Wind vectors
 ZP = 2.00 UT = 9.00 DOY = 326



Created: Fri Mar 11 14:11:28 2005

From: /tgcm/histories/secondary/November2003/November2003_AMIE_v3_50_65/326.nc

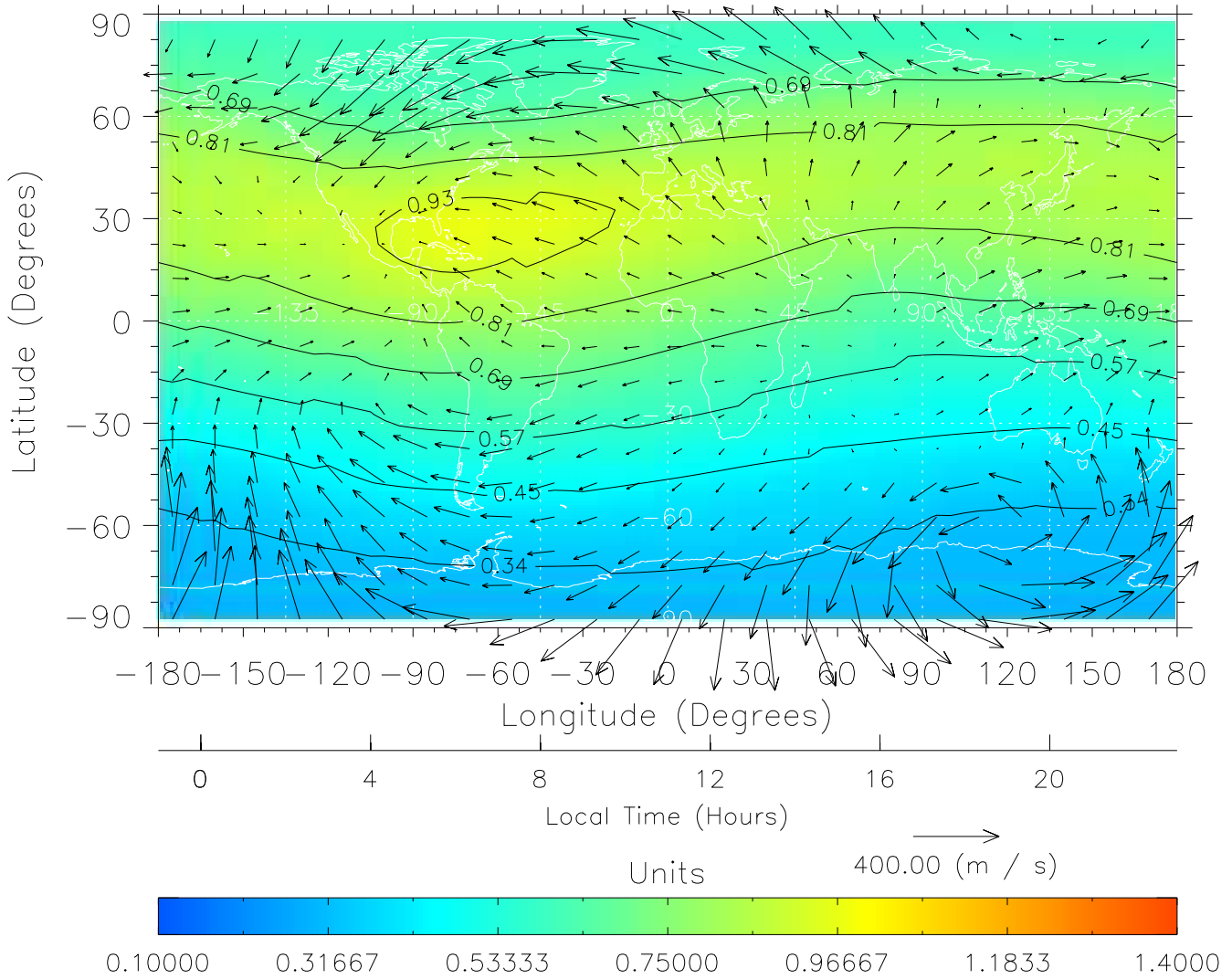
TIME-GCM MAP $\Sigma O/N_2$ with Neutral Wind vectors
ZP = 2.00 UT = 10.00 DOY = 326



Created: Fri Mar 11 14:11:28 2005

From: /tgcm/histories/secondary/November2003/November2003_AMIE_v3_50_65/326.nc

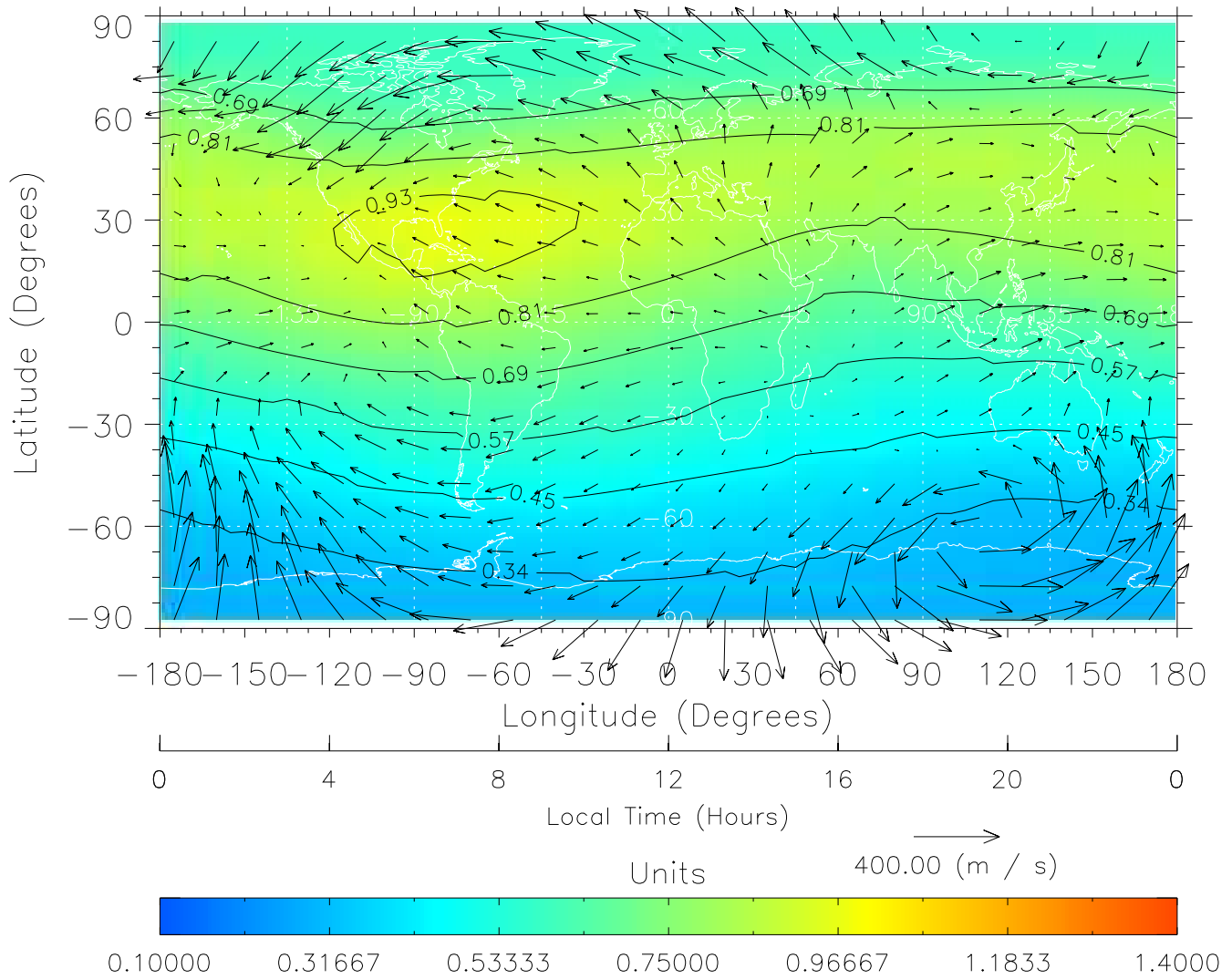
TIME-GCM MAP $\Sigma O/N_2$ with Neutral Wind vectors
ZP = 2.00 UT = 11.00 DOY = 326



Created: Fri Mar 11 14:11:29 2005

From: /tgcm/histories/secondary/November2003/November2003_AMIE_v3_50_65/326.nc

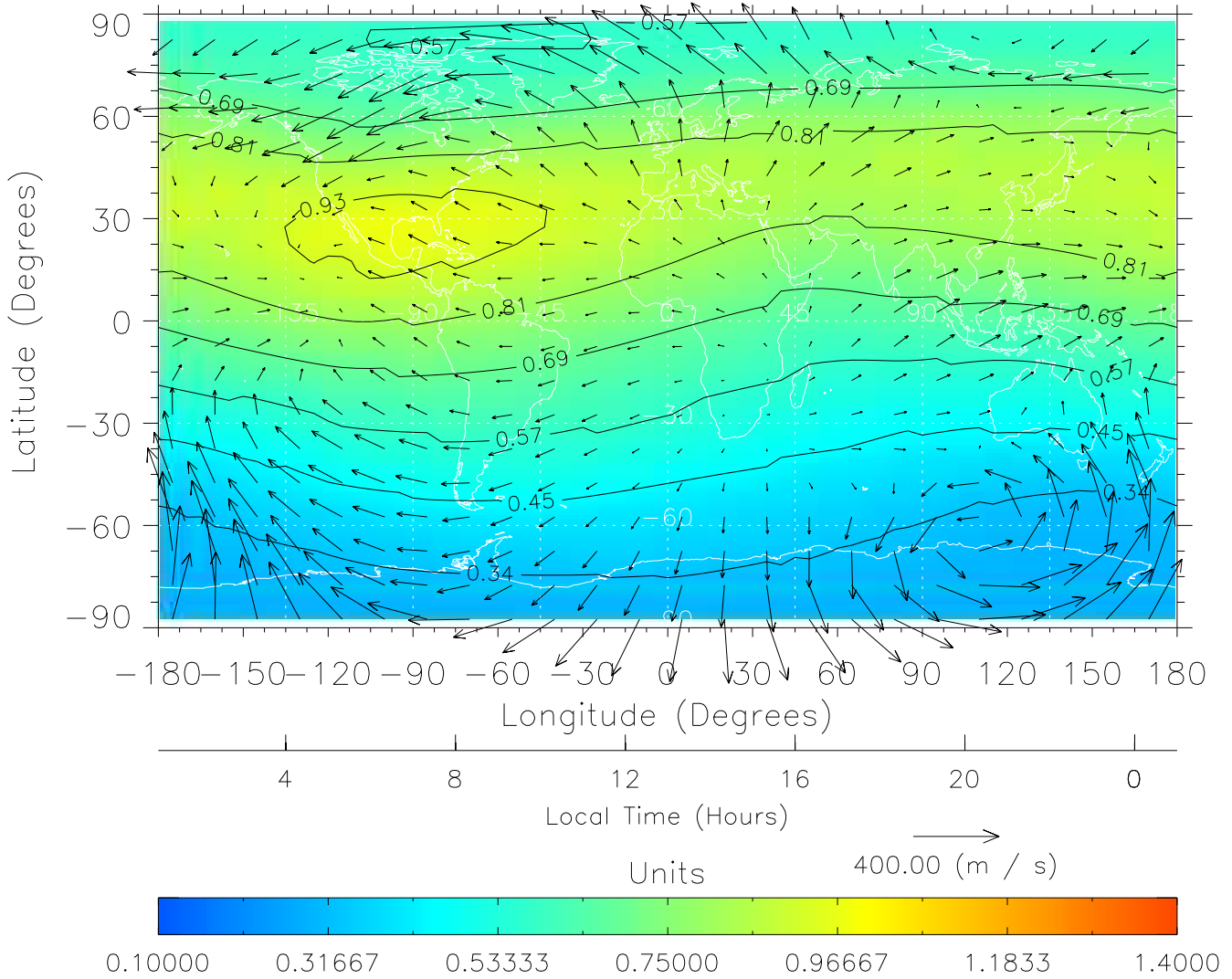
TIME-GCM MAP $\Sigma O/N_2$ with Neutral Wind vectors
ZP = 2.00 UT = 12.00 DOY = 326



Created: Fri Mar 11 14:11:29 2005

From: /tgcm/histories/secondary/November2003/November2003_AMIE_v3_50_65/326.nc

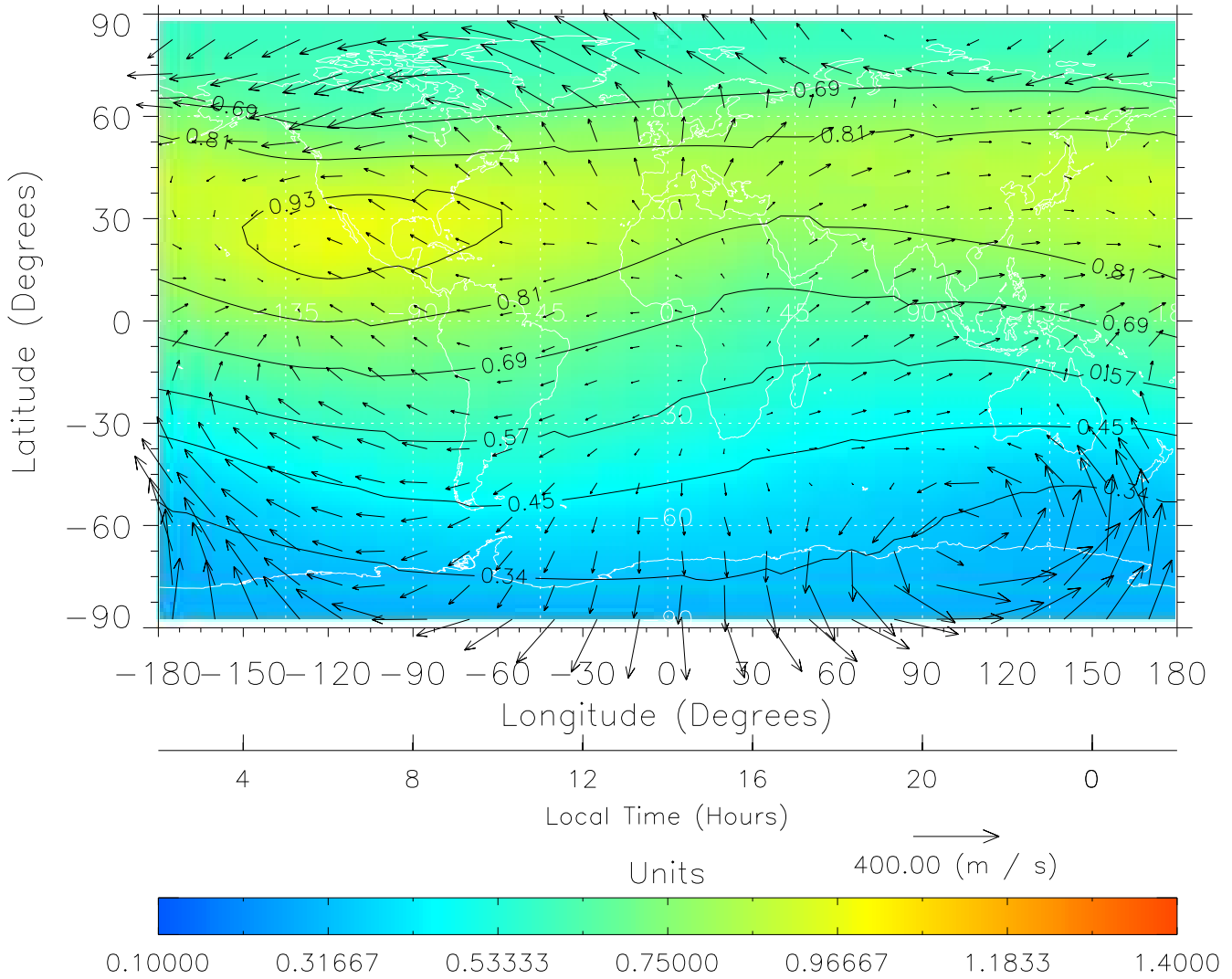
TIME-GCM MAP $\Sigma O/N_2$ with Neutral Wind vectors
ZP = 2.00 UT = 13.00 DOY = 326



Created: Fri Mar 11 14:11:30 2005

From: /tgcm/histories/secondary/November2003/November2003_AMIE_v3_50_65/326.nc

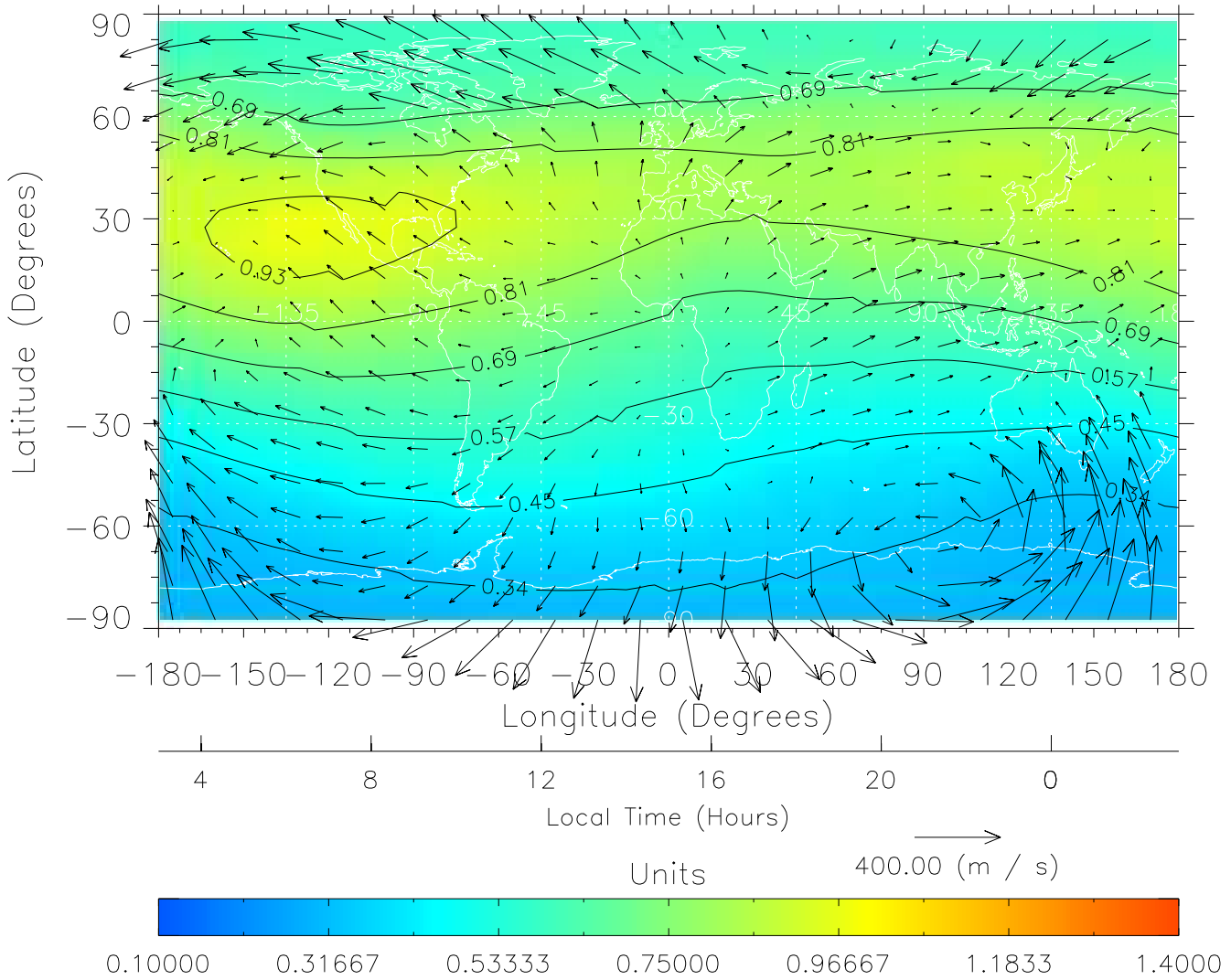
TIME-GCM MAP $\Sigma O/N_2$ with Neutral Wind vectors
ZP = 2.00 UT = 14.00 DOY = 326



Created: Fri Mar 11 14:11:30 2005

From: /tgcm/histories/secondary/November2003/November2003_AMIE_v3_50_65/326.nc

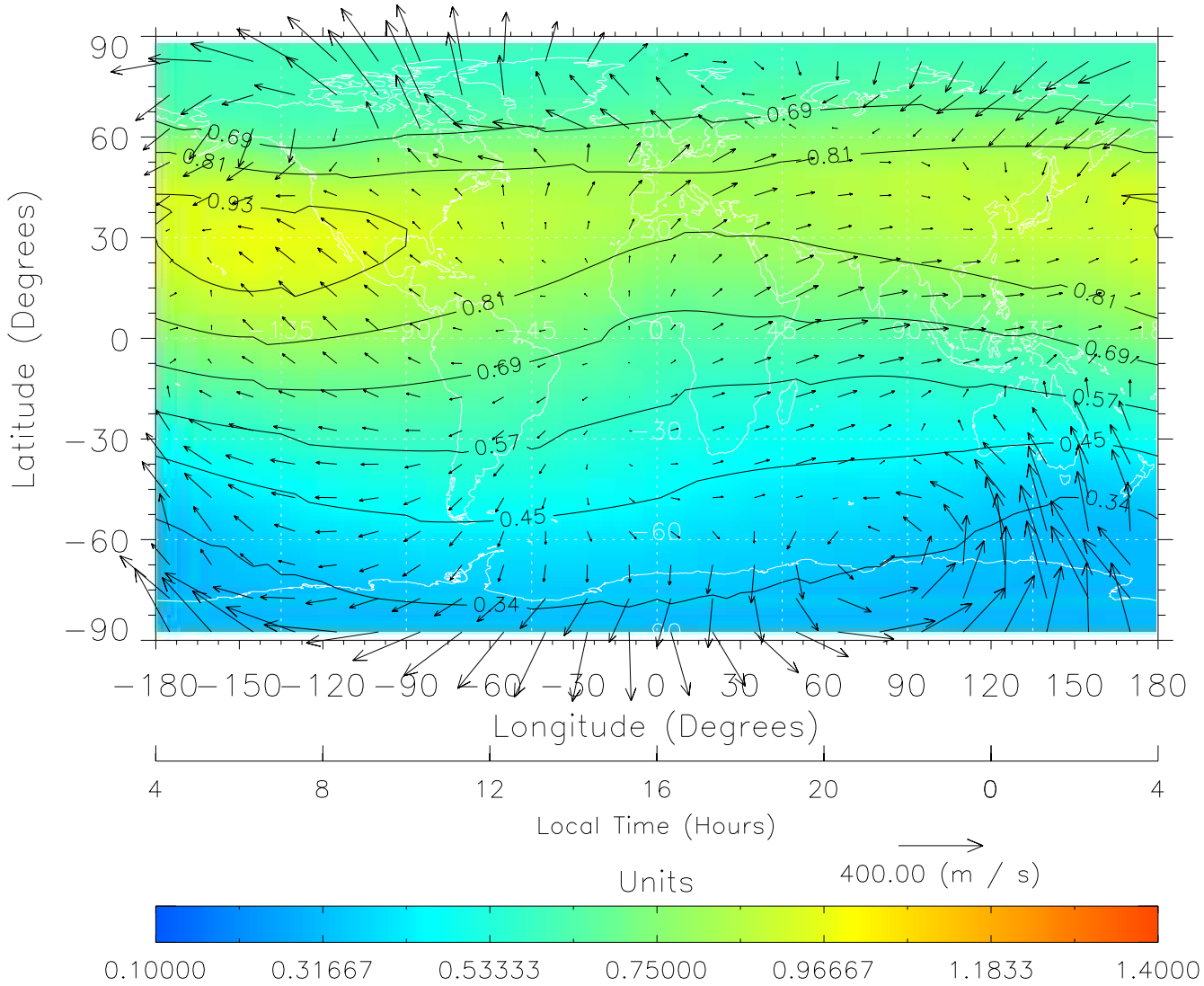
TIME-GCM MAP $\Sigma O/N_2$ with Neutral Wind vectors
ZP = 2.00 UT = 15.00 DOY = 326



Created: Fri Mar 11 14:11:31 2005

From: /tgcm/histories/secondary/November2003/November2003_AMIE_v3_50_65/326.nc

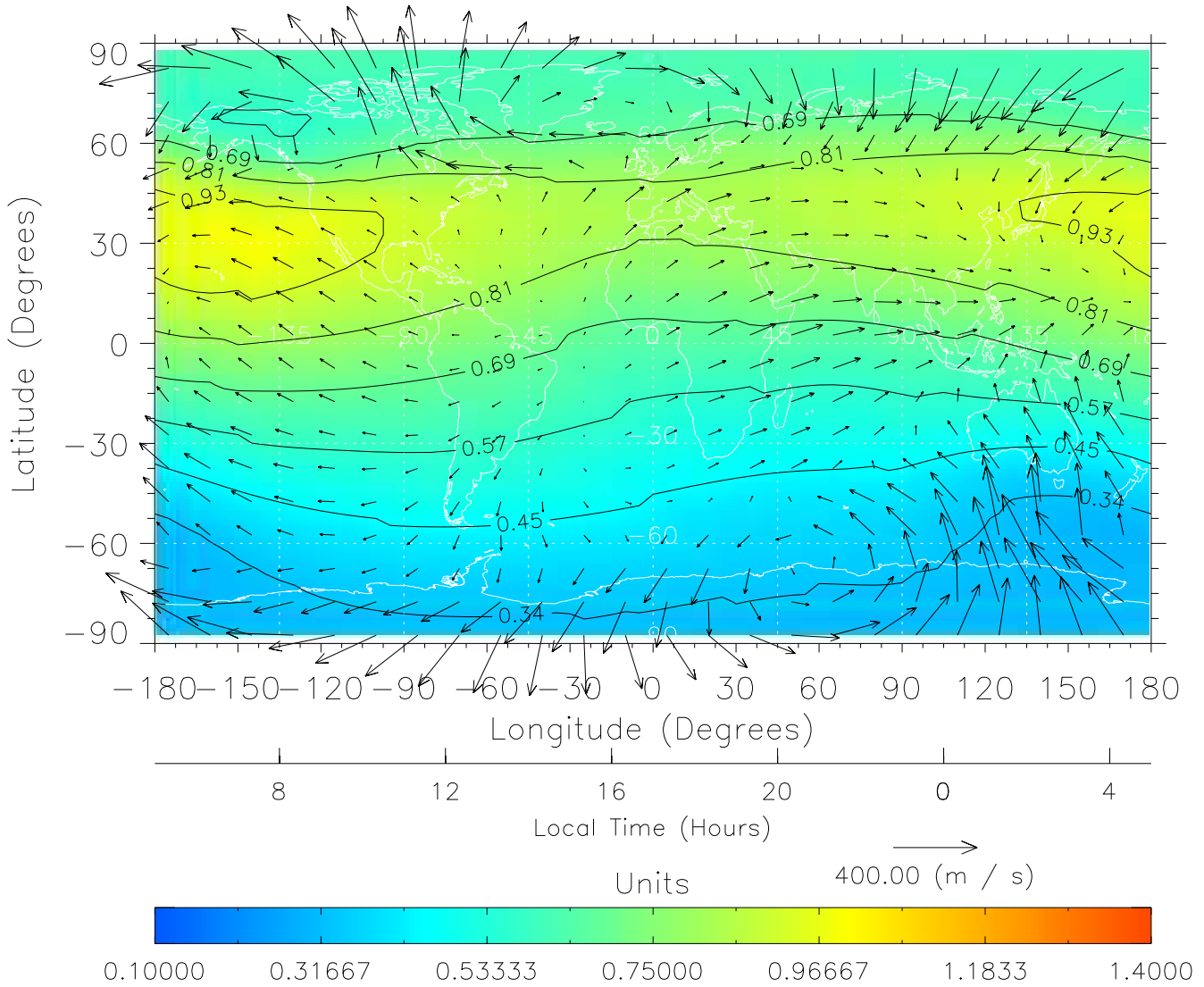
TIME-GCM MAP $\Sigma O/N_2$ with Neutral Wind vectors
ZP = 2.00 UT = 16.00 DOY = 326



Created: Fri Mar 11 14:11:31 2005

From: /tgcm/histories/secondary/November2003/November2003_AMIE_v3_50_65/326.nc

TIME-GCM MAP $\Sigma O/N_2$ with Neutral Wind vectors
ZP = 2.00 UT = 17.00 DOY = 326

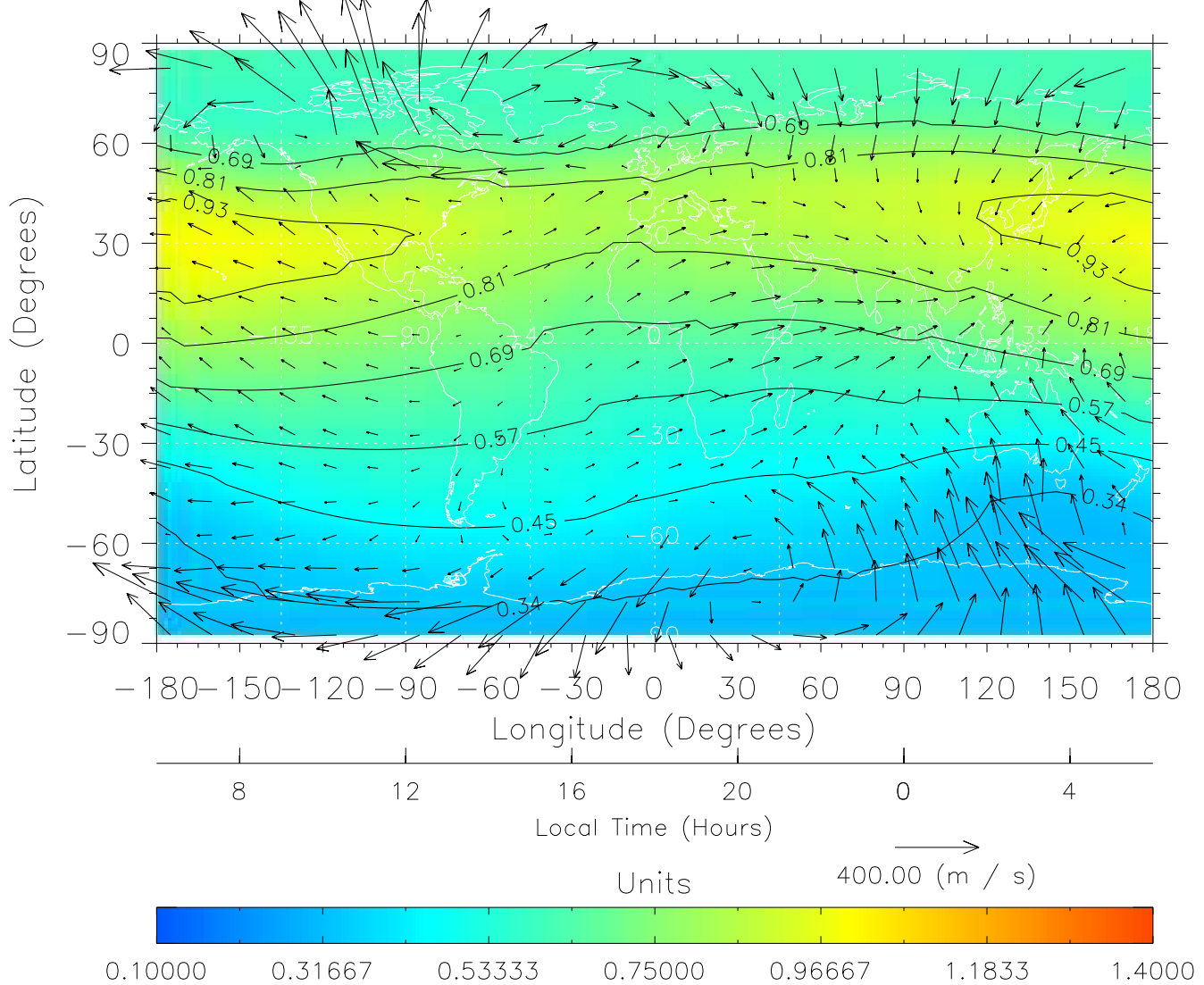


Created: Fri Mar 11 14:11:32 2005

From: /tgcm/histories/secondary/November2003/November2003_AMIE_v3_50_65/326.nc

TIME-GCM MAP $\Sigma O/N_2$ with Neutral Wind vectors

ZP = 2.00 UT = 18.00 DOY = 326

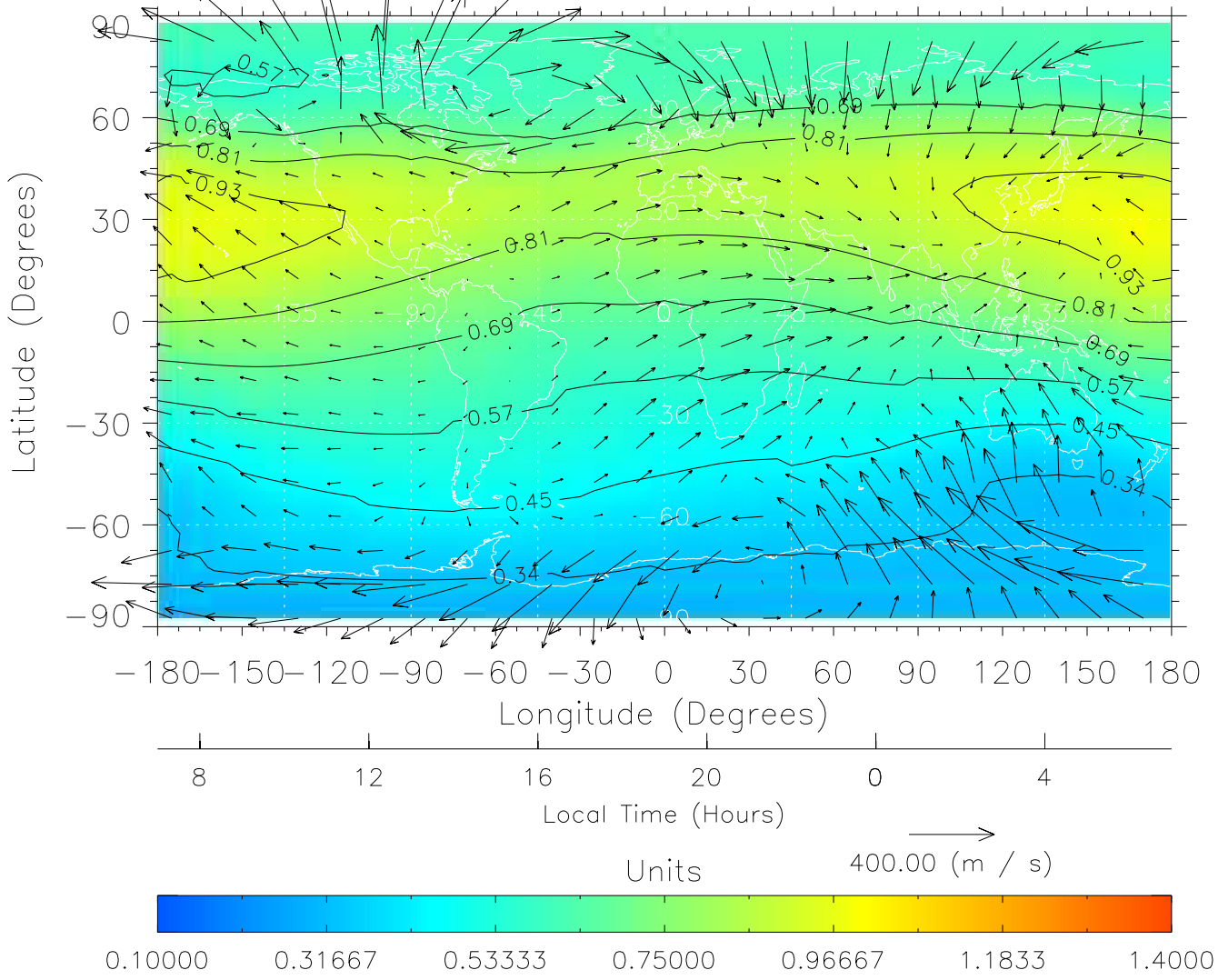


Created: Fri Mar 11 14:11:32 2005

From: /tgcm/histories/secondary/November2003/November2003_AMIE_v3_50_65/326.nc

TIME-GCM MAP $\Sigma O/N_2$ with Neutral Wind vectors

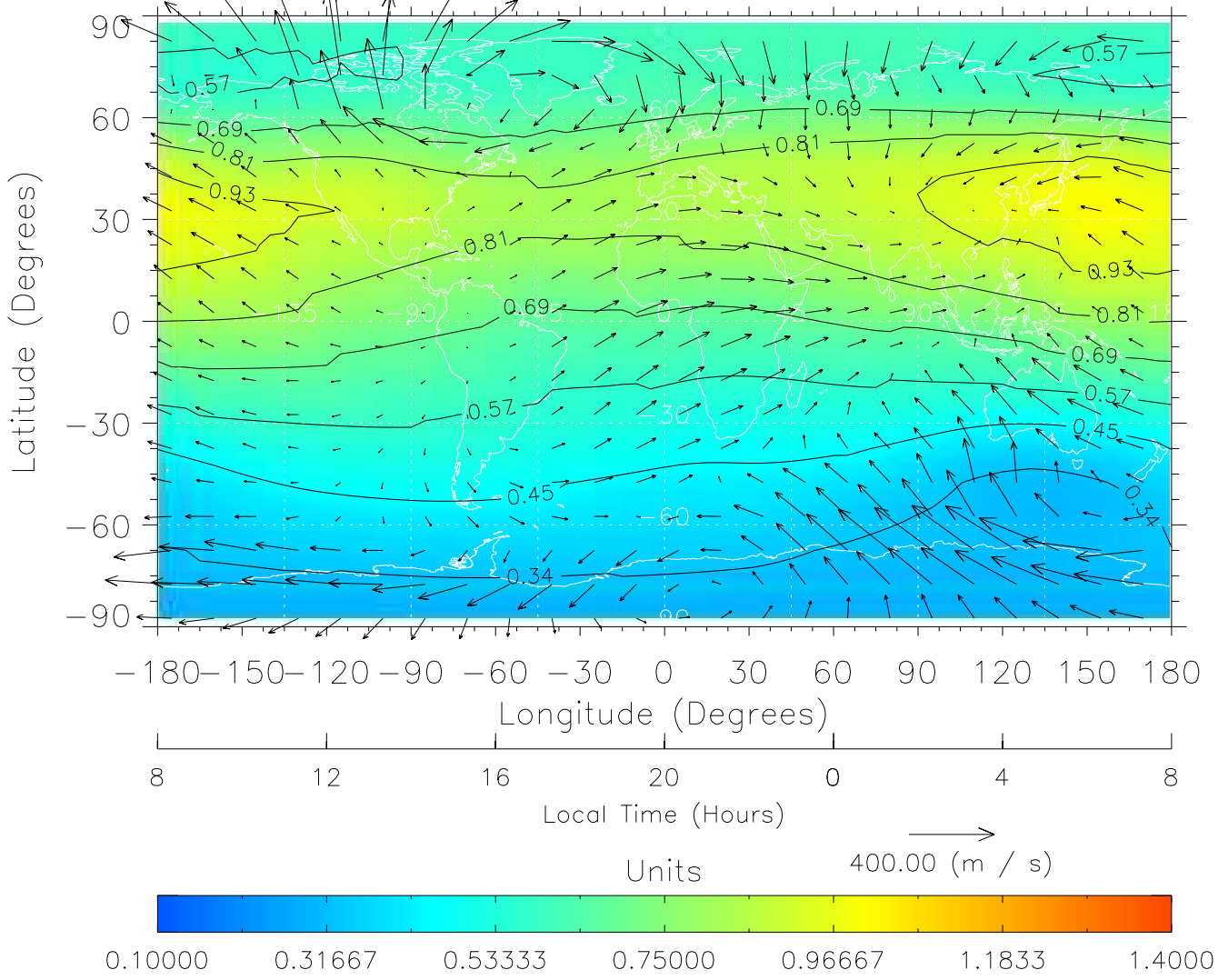
ZP = 2.00 UT = 19.00 DOY = 326



Created: Fri Mar 11 14:11:32 2005

From: /tgcm/histories/secondary/November2003/November2003_AMIE_v3_50_65/326.nc

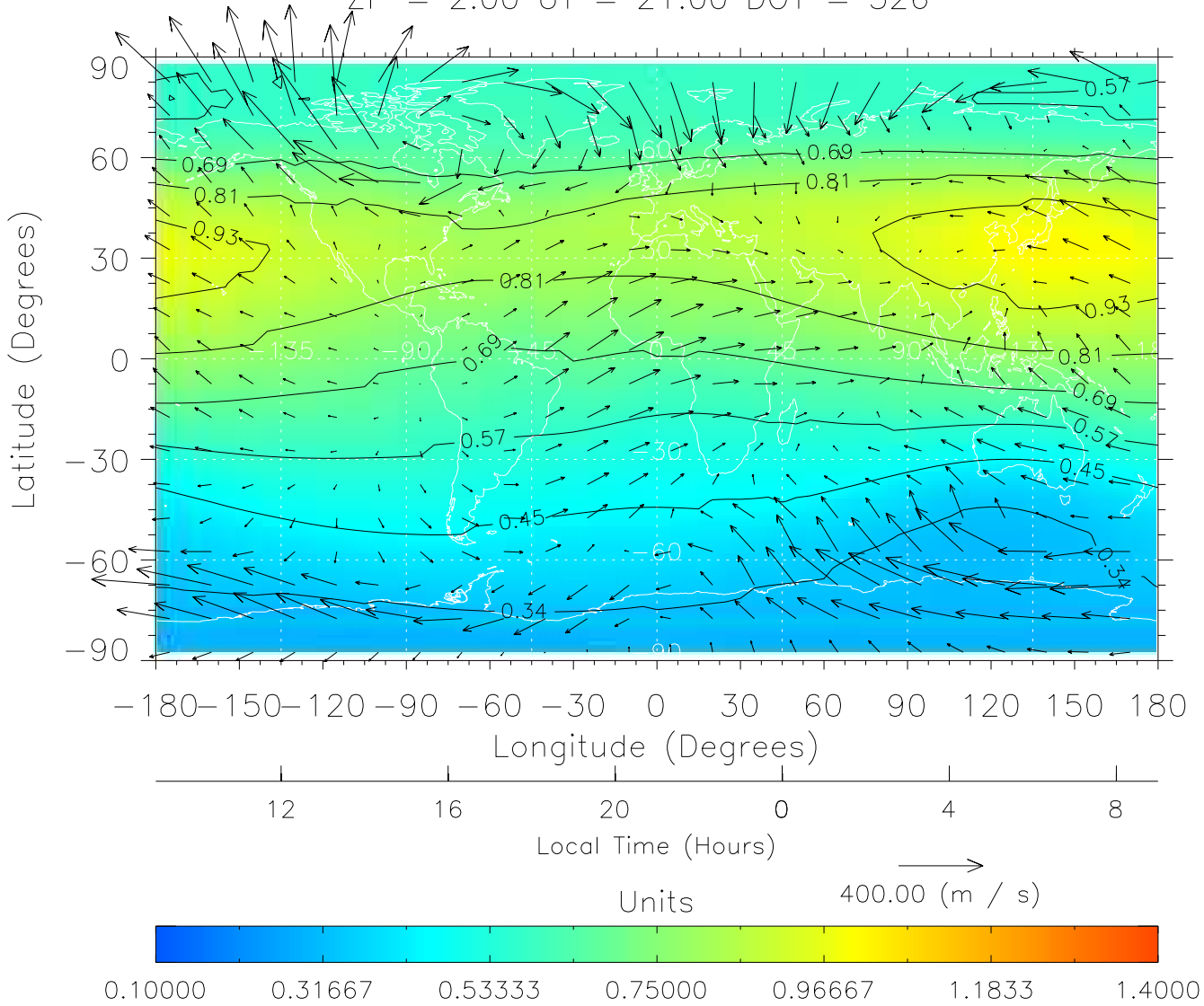
TIME-GCM MAP $\Sigma O/N_2$ with Neutral Wind vectors
ZP = 2.00 UT = 20.00 DOY = 326



Created: Fri Mar 11 14:11:33 2005

From: /tgcm/histories/secondary/November2003/November2003_AMIE_v3_50_65/326.nc

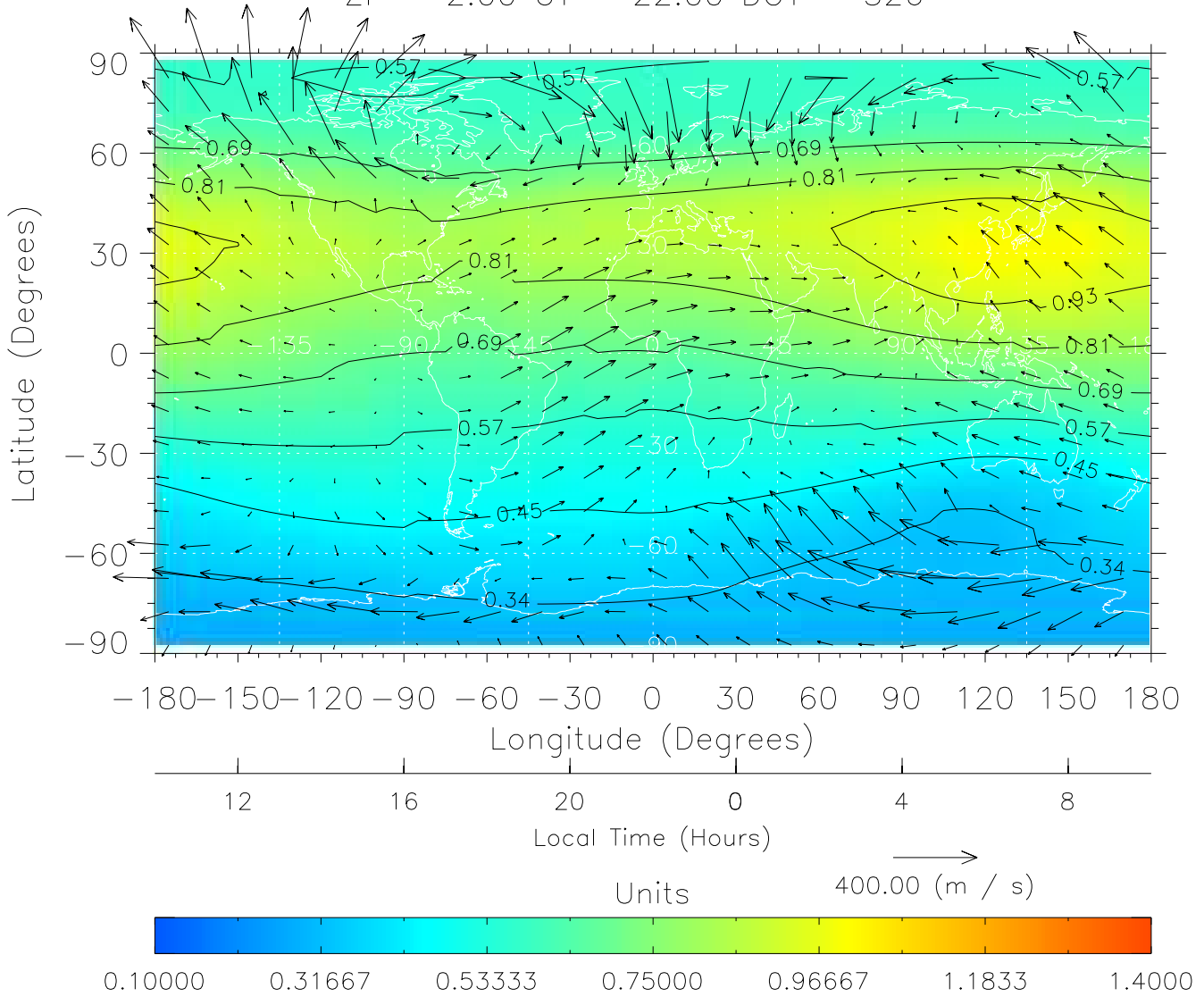
TIME-GCM MAP $\Sigma O/N_2$ with Neutral Wind vectors
ZP = 2.00 UT = 21.00 DOY = 326



Created: Fri Mar 11 14:11:33 2005

From: /tgcm/histories/secondary/November2003/November2003_AMIE_v3_50_65/326.nc

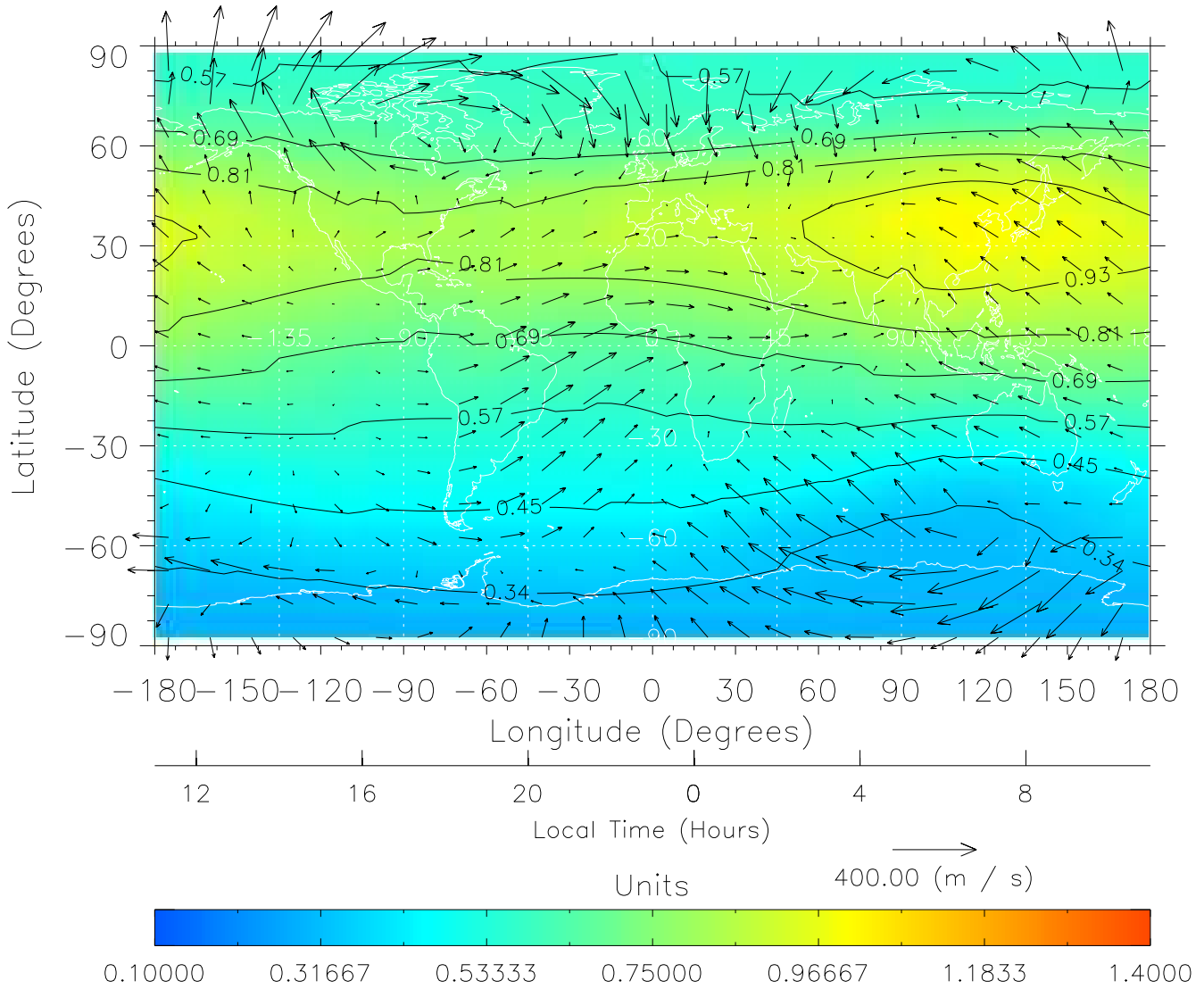
TIME-GCM MAP $\Sigma O/N_2$ with Neutral Wind vectors
ZP = 2.00 UT = 22.00 DOY = 326



Created: Fri Mar 11 14:11:34 2005

From: /tgcm/histories/secondary/November2003/November2003_AMIE_v3_50_65/326.nc

TIME-GCM MAP $\Sigma O/N_2$ with Neutral Wind vectors
ZP = 2.00 UT = 23.00 DOY = 326



Created: Fri Mar 11 14:11:34 2005

From: /tgcm/histories/secondary/November2003/November2003_AMIE_v3_50_65/326.nc