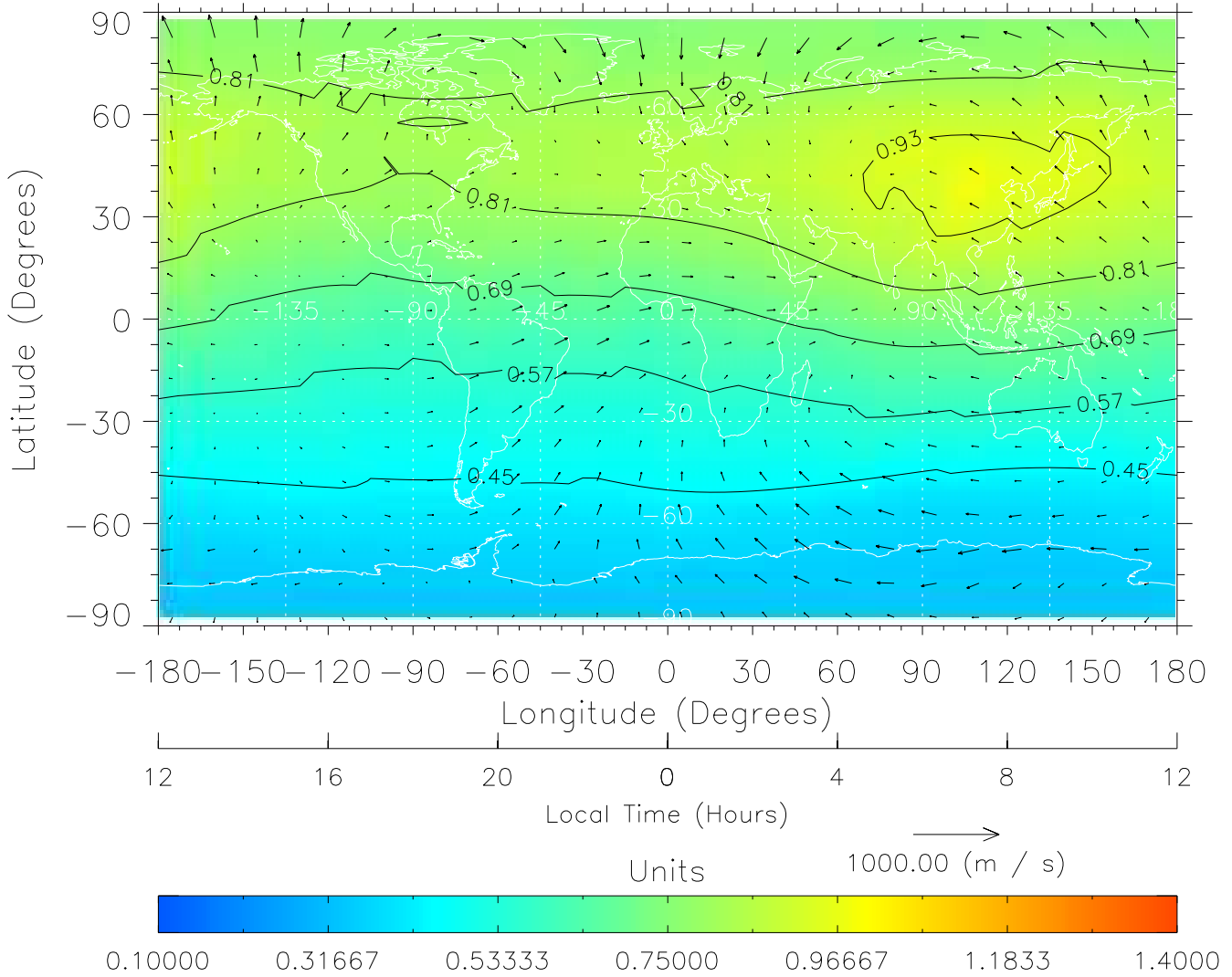


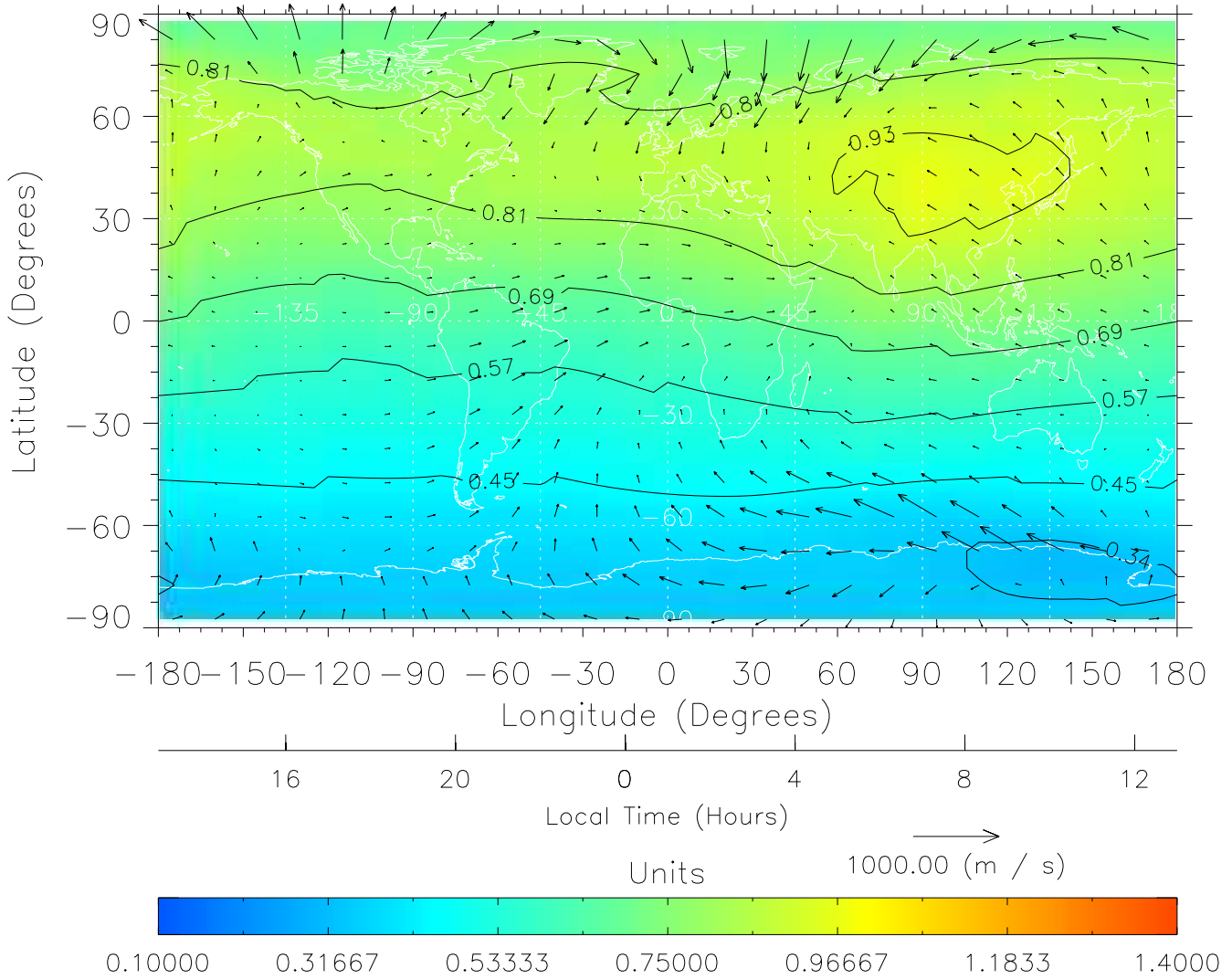
TIME-GCM MAP $\Sigma O/N_2$ with Neutral Wind vectors
 ZP = 2.00 UT = 0.00 DOY = 324



Created: Fri Mar 11 14:07:09 2005

From: /tgcm/histories/secondary/November2003/November2003_AMIE_v3_50_65/324.nc

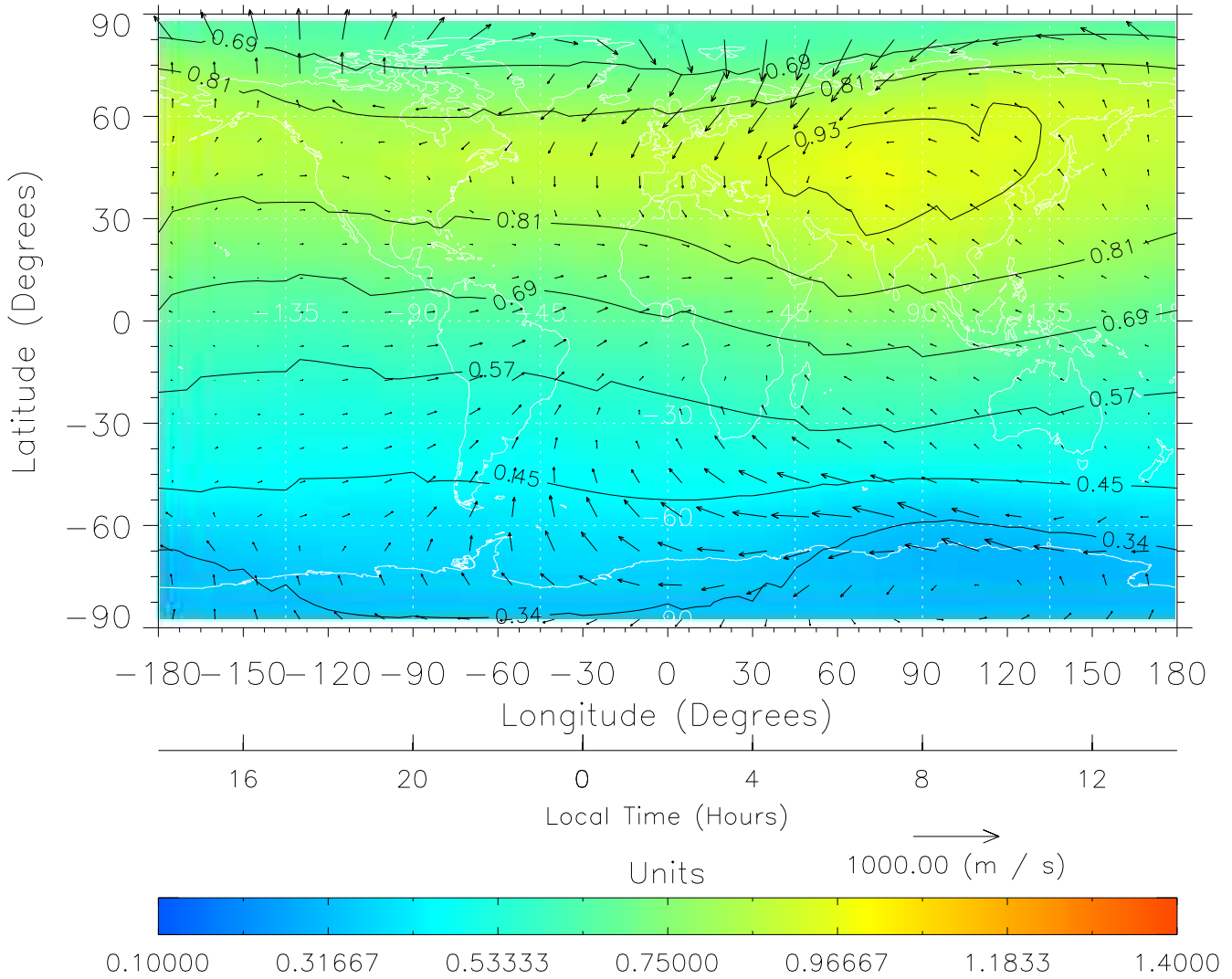
TIME-GCM MAP $\Sigma O/N_2$ with Neutral Wind vectors
ZP = 2.00 UT = 1.00 DOY = 324



Created: Fri Mar 11 14:07:09 2005

From: /tgcm/histories/secondary/November2003/November2003_AMIE_v3_50_65/324.nc

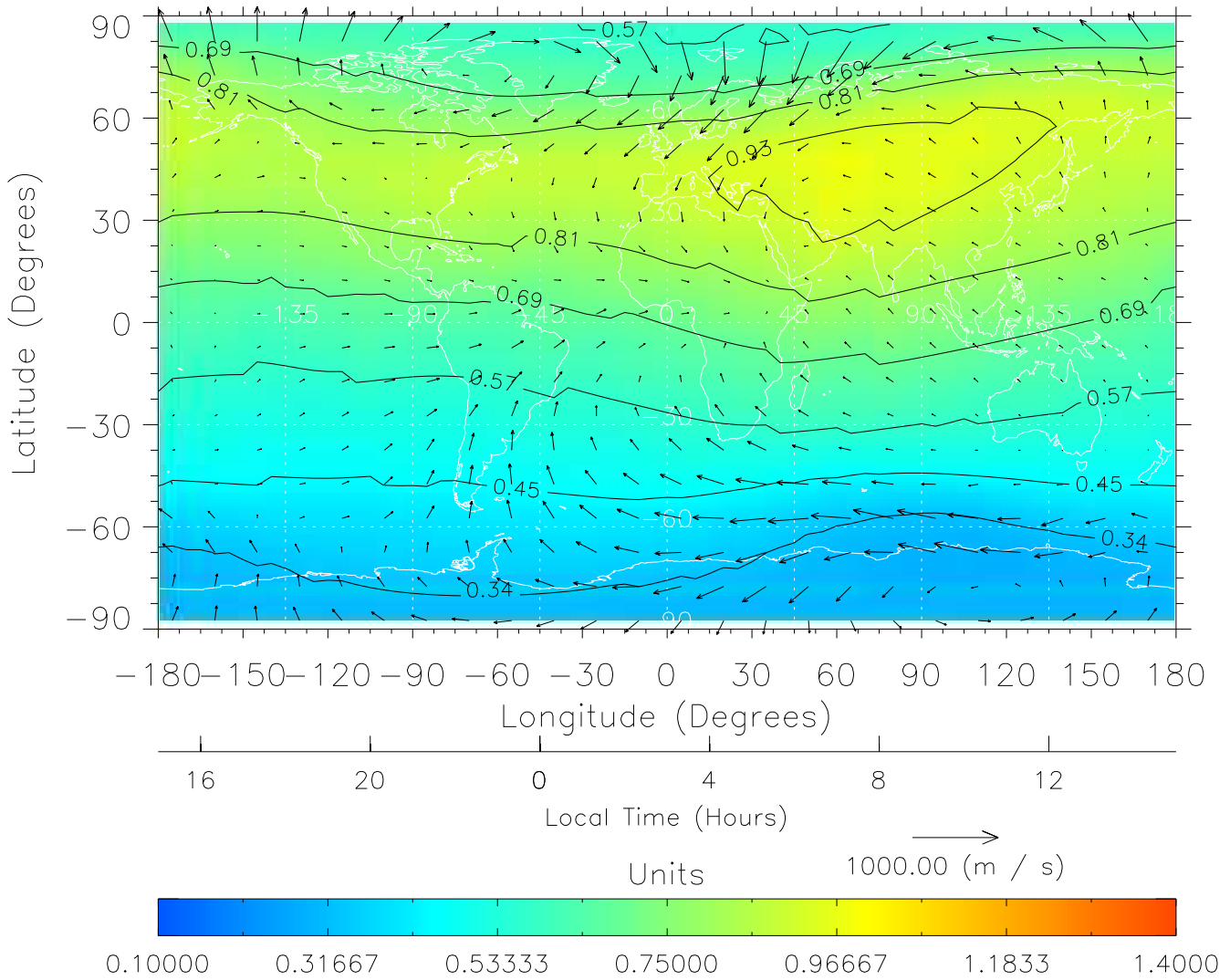
TIME-GCM MAP $\Sigma O/N_2$ with Neutral Wind vectors
ZP = 2.00 UT = 2.00 DOY = 324



Created: Fri Mar 11 14:07:10 2005

From: /tgcm/histories/secondary/November2003/November2003_AMIE_v3_50_65/324.nc

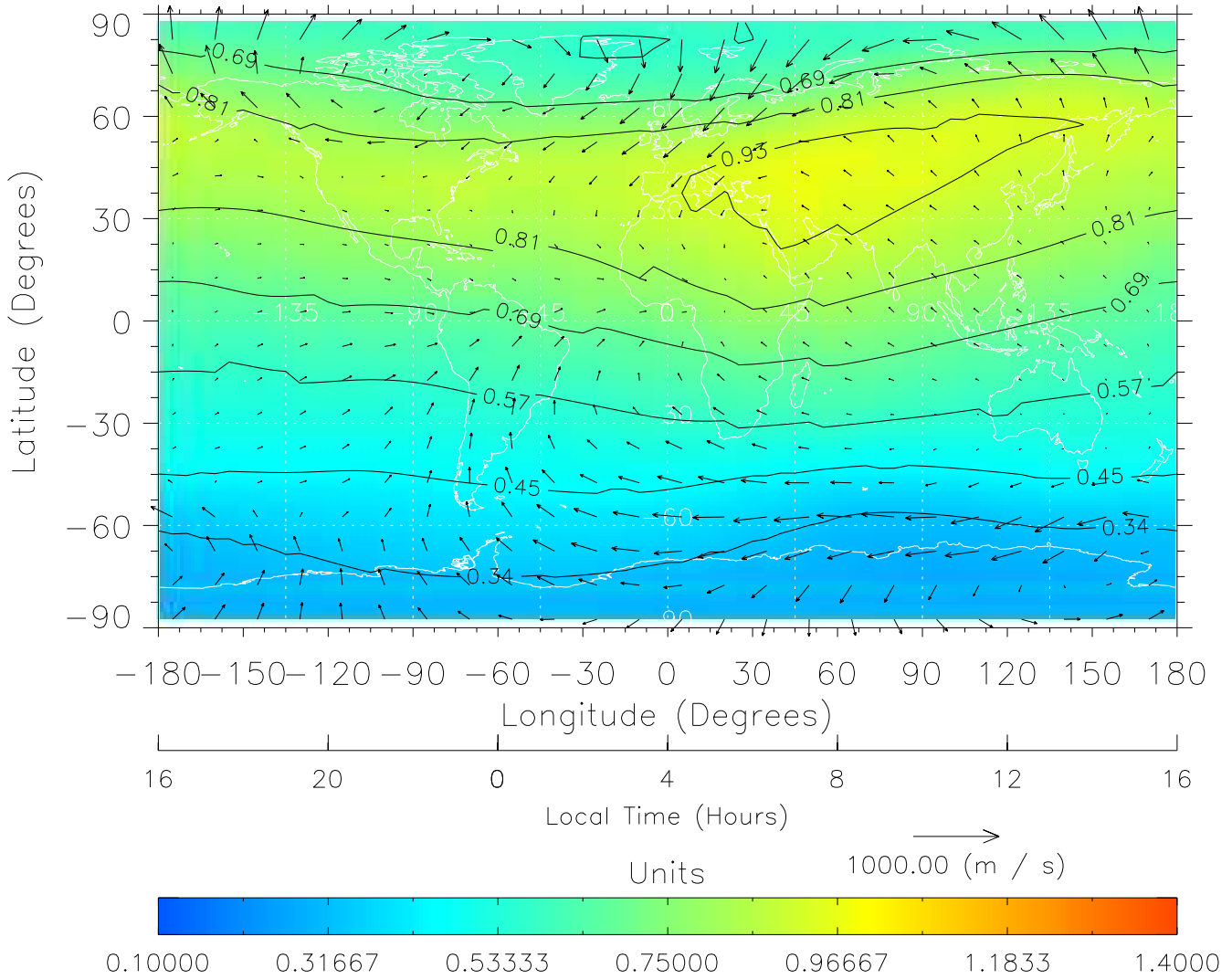
TIME-GCM MAP $\Sigma O/N_2$ with Neutral Wind vectors
ZP = 2.00 UT = 3.00 DOY = 324



Created: Fri Mar 11 14:07:10 2005

From: /tgcm/histories/secondary/November2003/November2003_AMIE_v3_50_65/324.nc

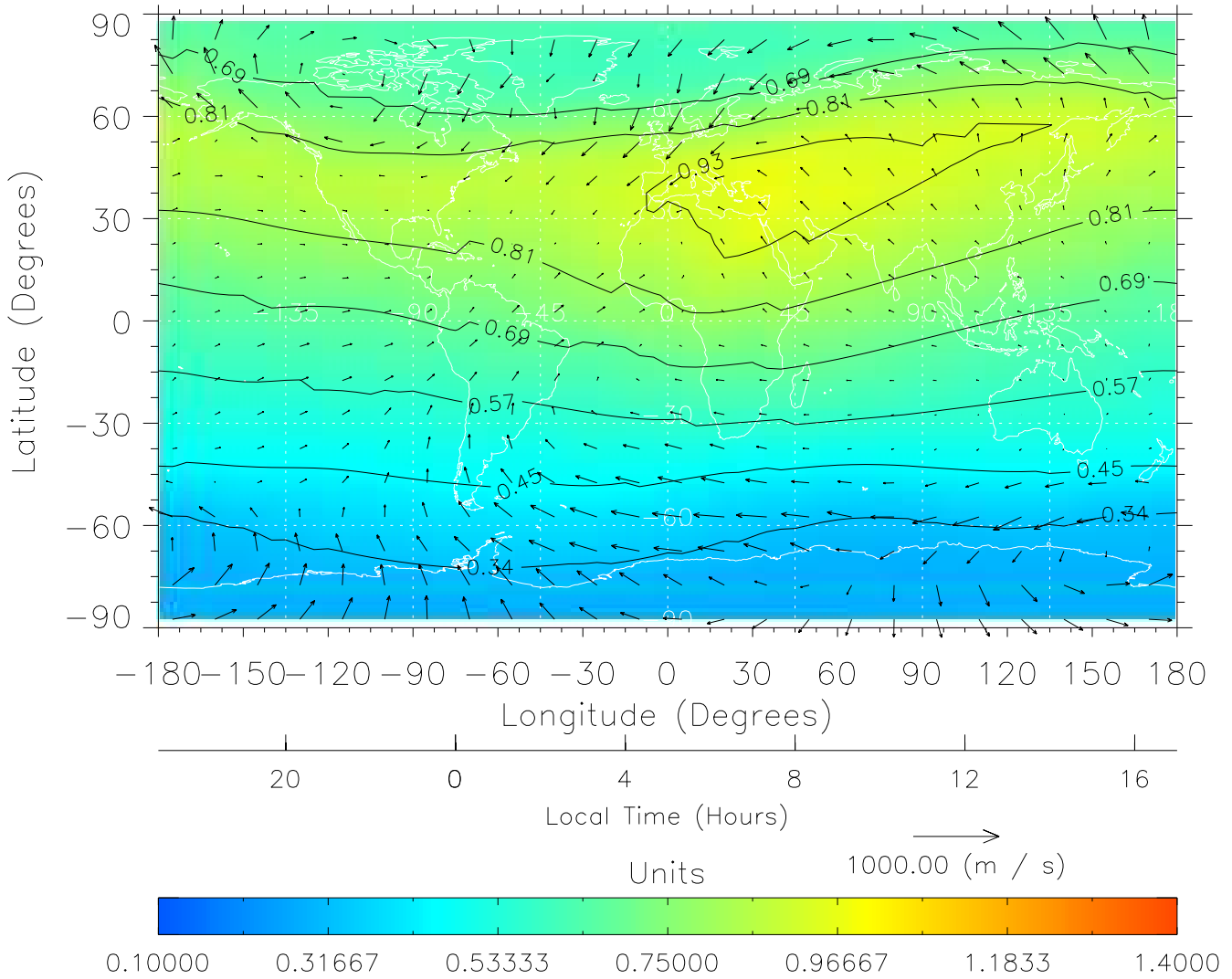
TIME-GCM MAP $\Sigma O/N_2$ with Neutral Wind vectors
ZP = 2.00 UT = 4.00 DOY = 324



Created: Fri Mar 11 14:07:11 2005

From: /tgcm/histories/secondary/November2003/November2003_AMIE_v3_50_65/324.nc

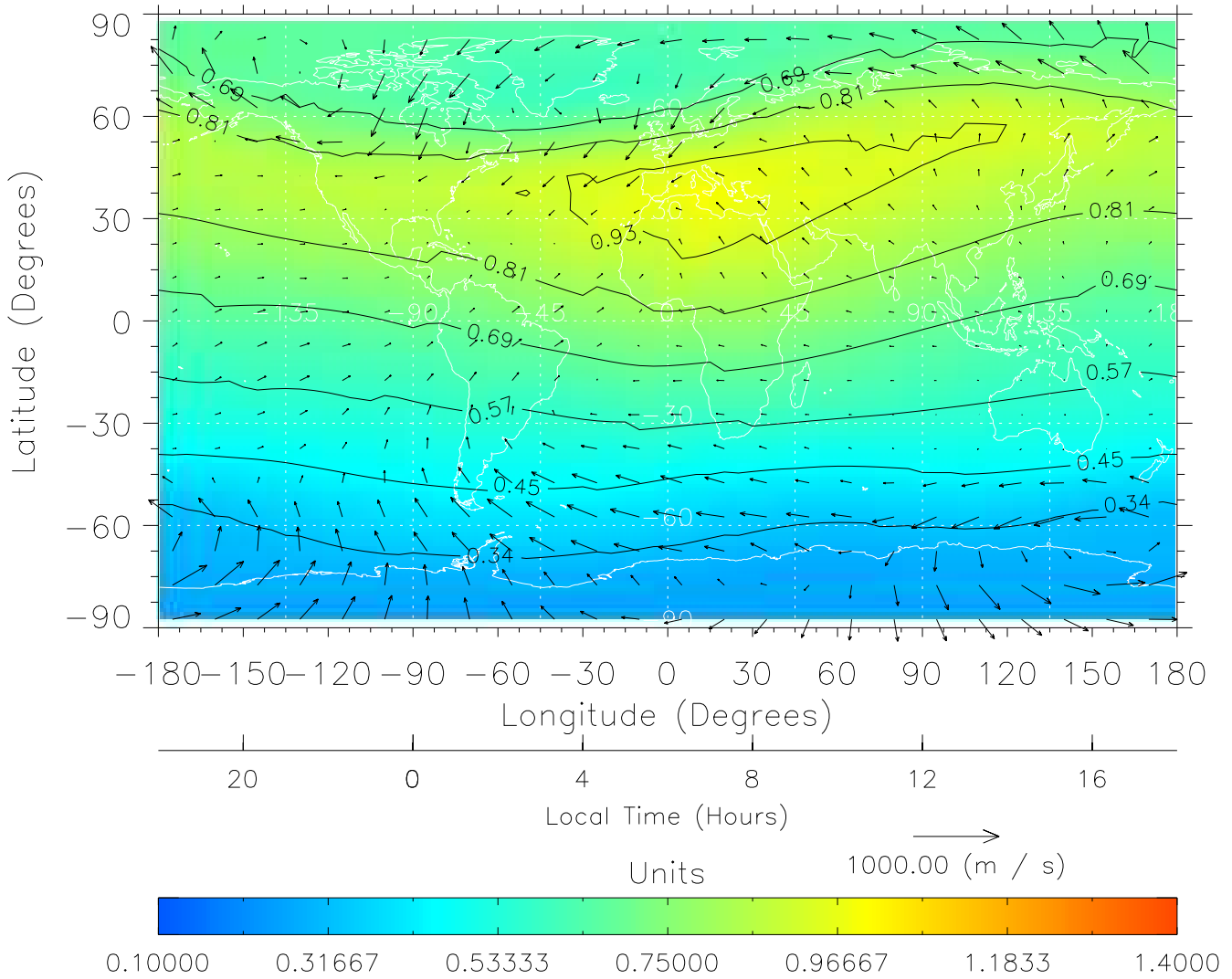
TIME-GCM MAP $\Sigma O/N_2$ with Neutral Wind vectors
ZP = 2.00 UT = 5.00 DOY = 324



Created: Fri Mar 11 14:07:11 2005

From: /tgcm/histories/secondary/November2003/November2003_AMIE_v3_50_65/324.nc

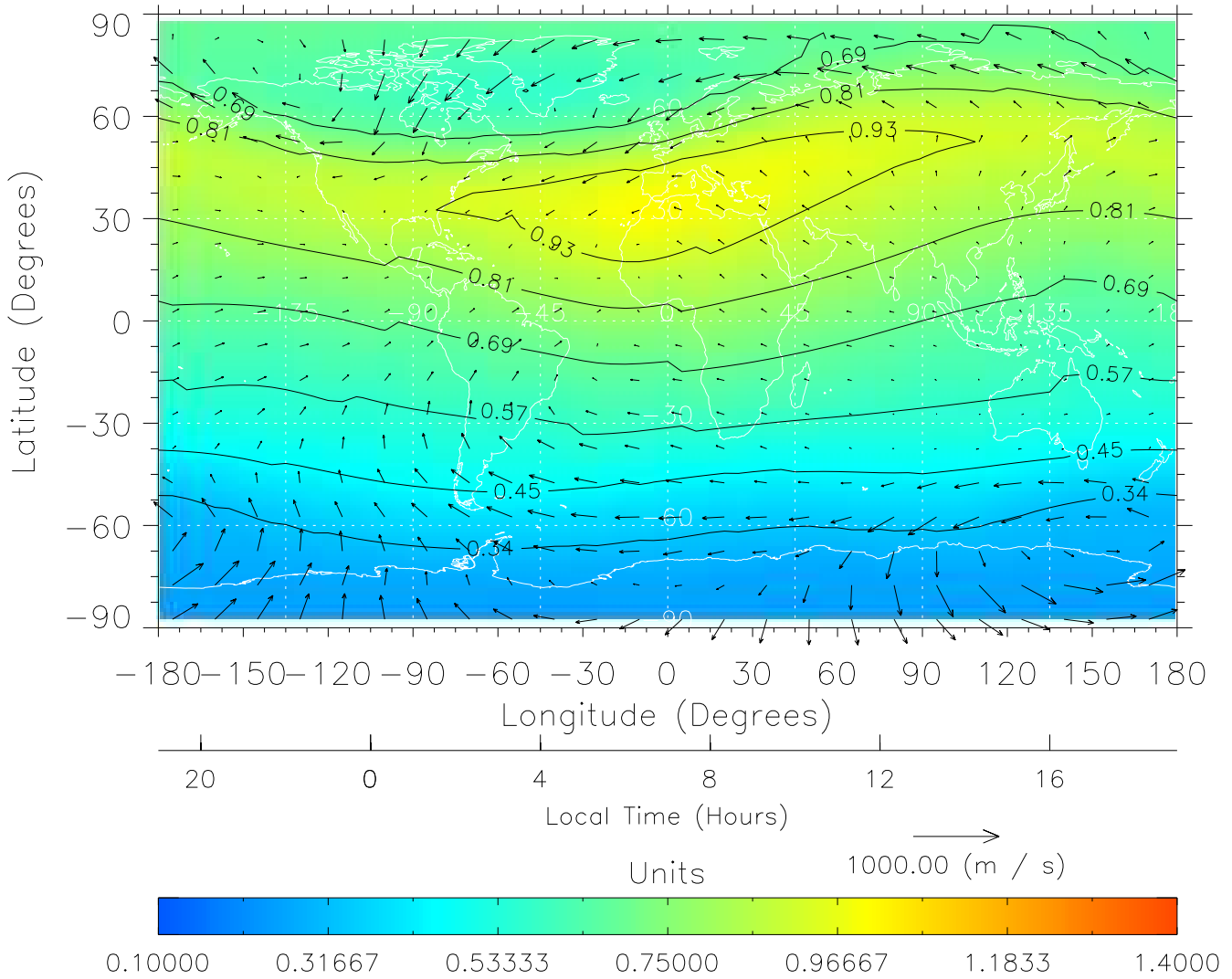
TIME-GCM MAP $\Sigma O/N_2$ with Neutral Wind vectors
ZP = 2.00 UT = 6.00 DOY = 324



Created: Fri Mar 11 14:07:12 2005

From: /tgcm/histories/secondary/November2003/November2003_AMIE_v3_50_65/324.nc

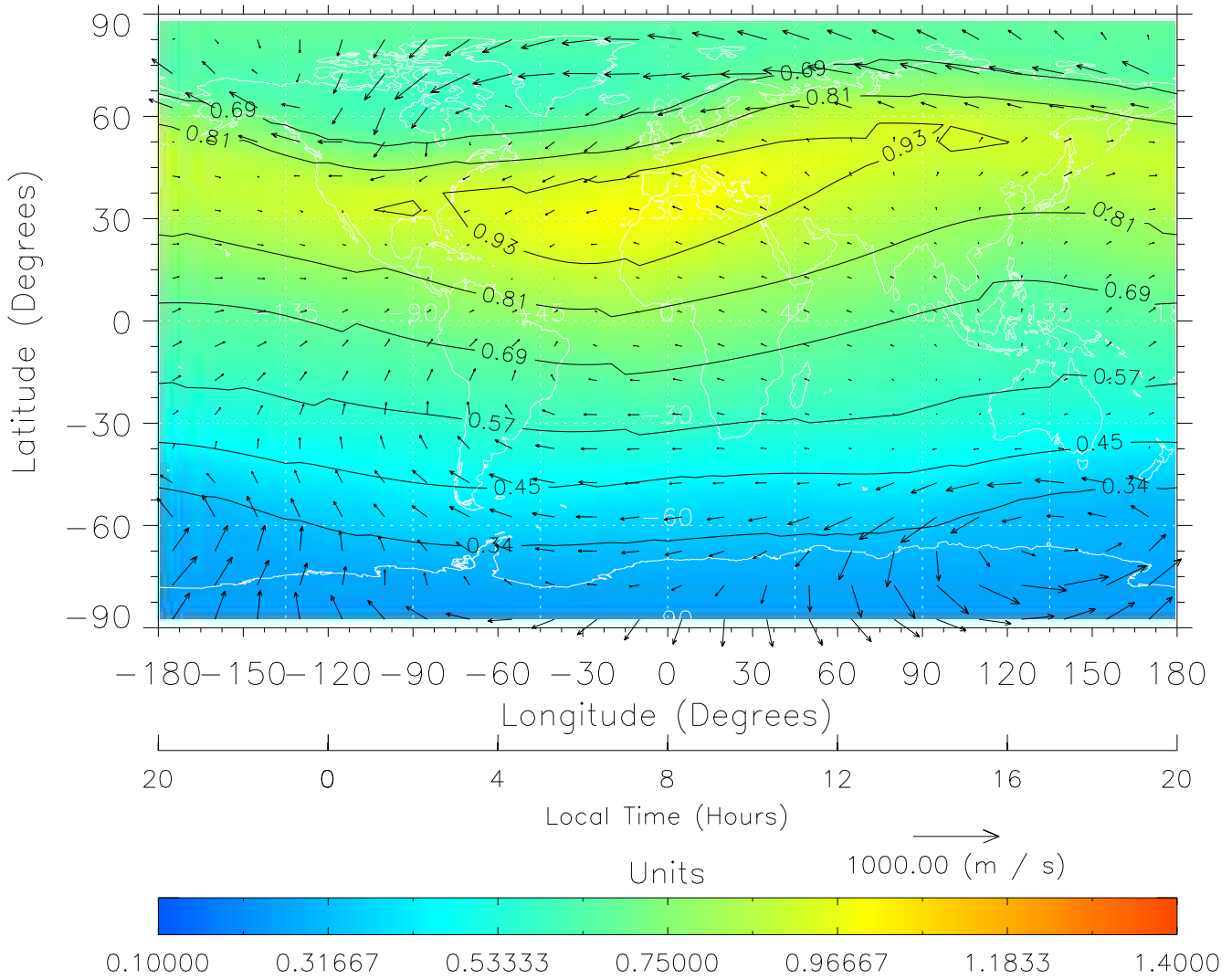
TIME-GCM MAP $\Sigma O/N_2$ with Neutral Wind vectors
ZP = 2.00 UT = 7.00 DOY = 324



Created: Fri Mar 11 14:07:12 2005

From: /tgcm/histories/secondary/November2003/November2003_AMIE_v3_50_65/324.nc

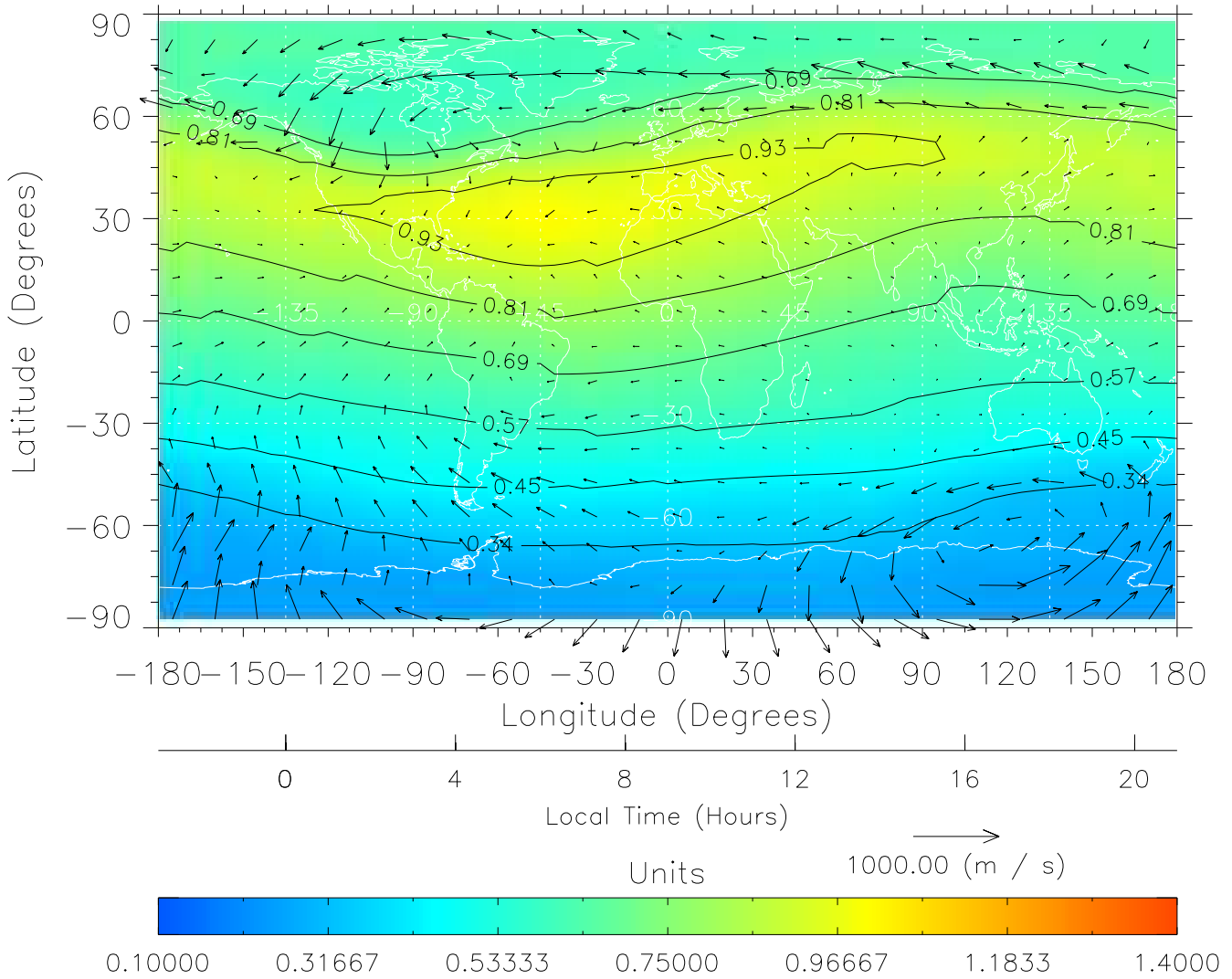
TIME-GCM MAP $\Sigma O/N_2$ with Neutral Wind vectors
ZP = 2.00 UT = 8.00 DOY = 324



Created: Fri Mar 11 14:07:13 2005

From: /tgcm/histories/secondary/November2003/November2003_AMIE_v3_50_65/324.nc

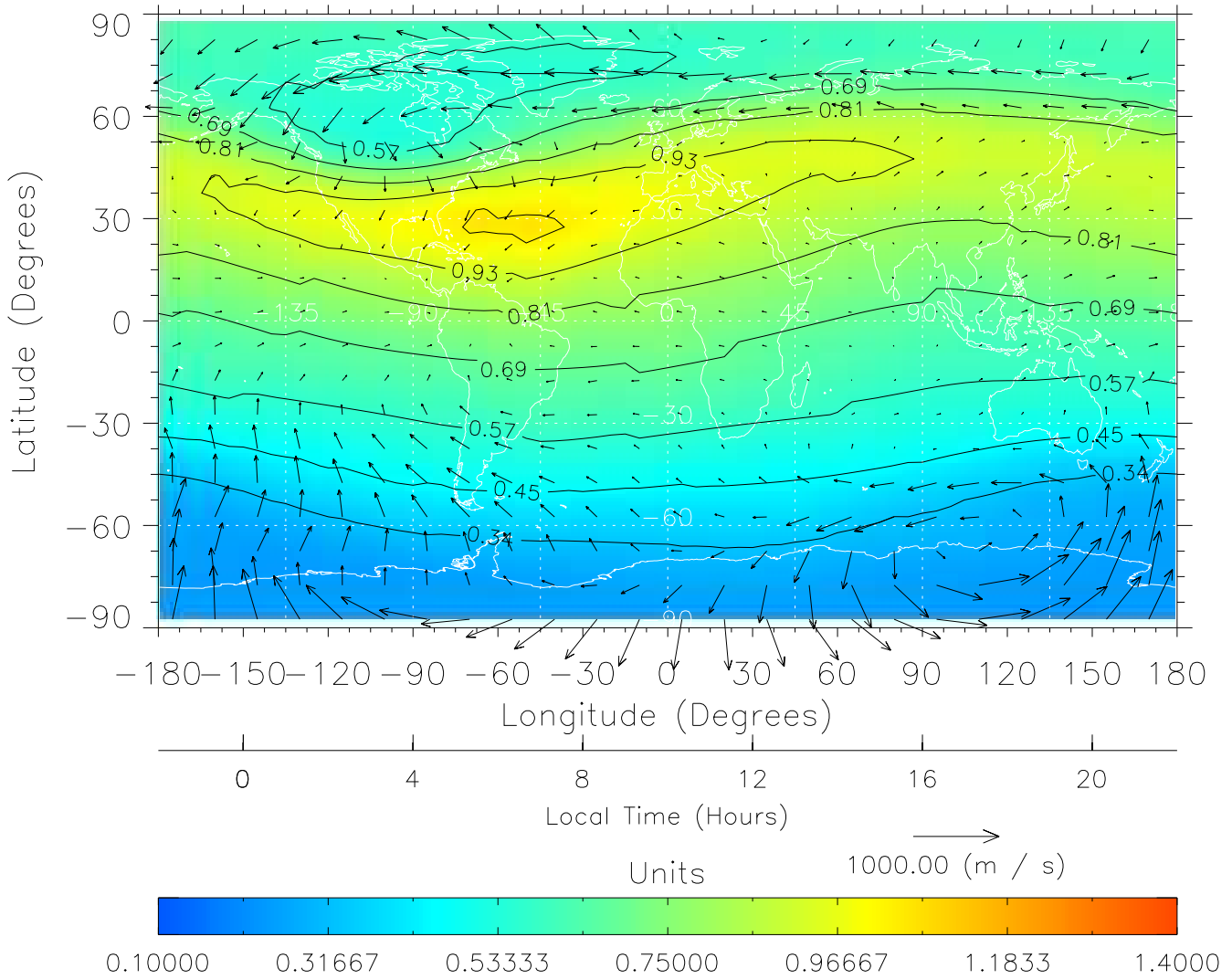
TIME-GCM MAP $\Sigma O/N_2$ with Neutral Wind vectors
ZP = 2.00 UT = 9.00 DOY = 324



Created: Fri Mar 11 14:07:13 2005

From: /tgcm/histories/secondary/November2003/November2003_AMIE_v3_50_65/324.nc

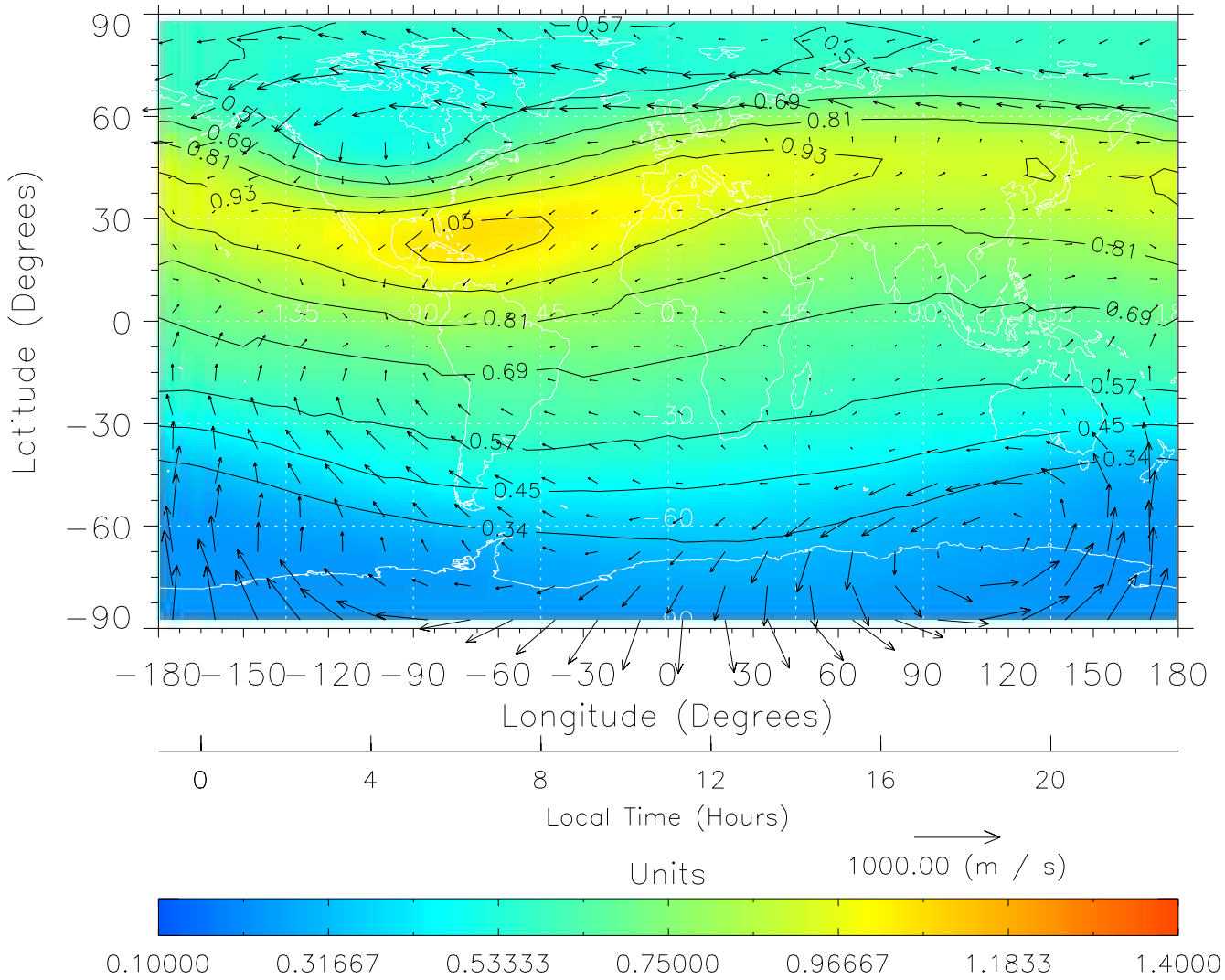
TIME-GCM MAP $\Sigma O/N_2$ with Neutral Wind vectors
ZP = 2.00 UT = 10.00 DOY = 324



Created: Fri Mar 11 14:07:13 2005

From: /tgcm/histories/secondary/November2003/November2003_AMIE_v3_50_65/324.nc

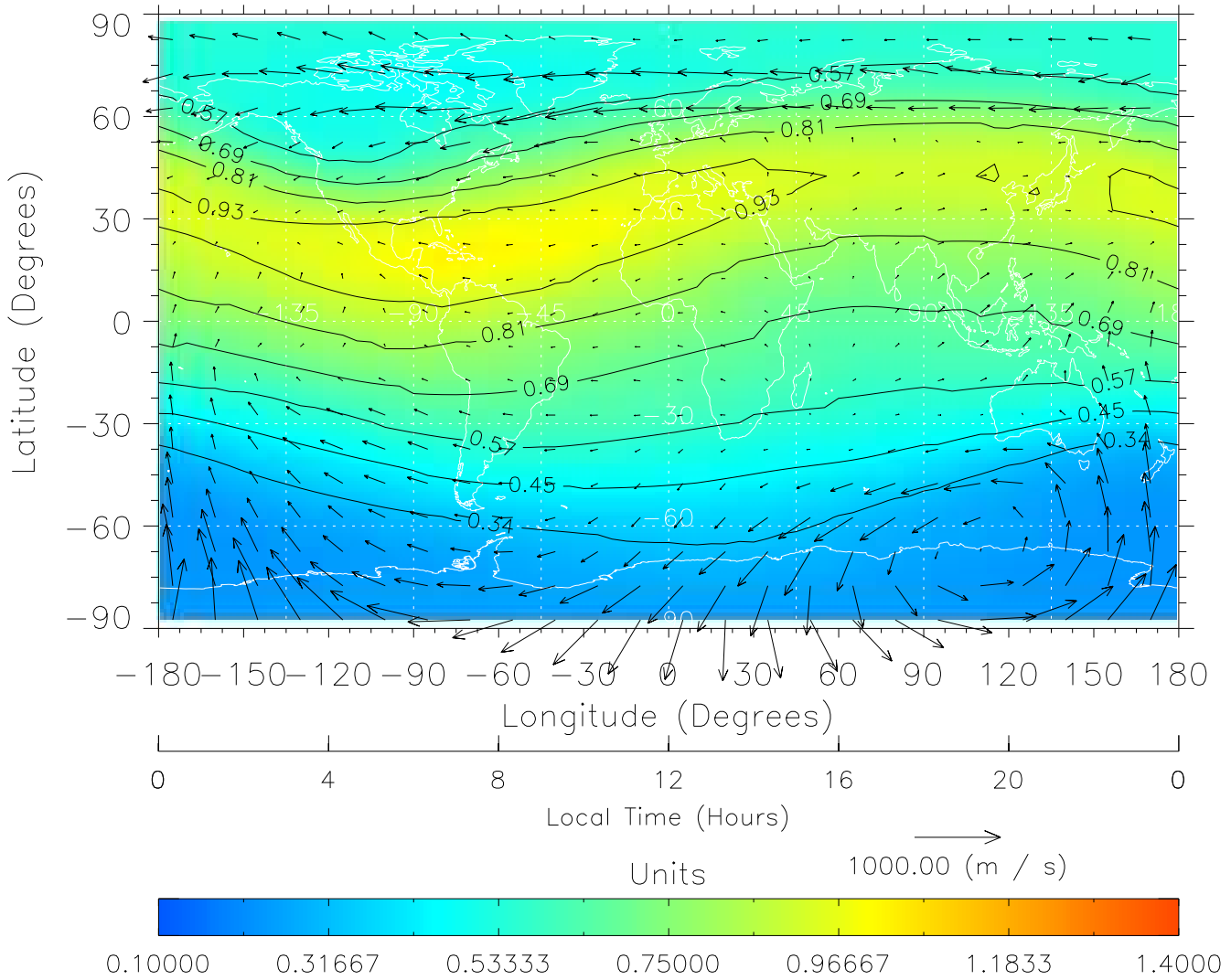
TIME-GCM MAP $\Sigma O/N_2$ with Neutral Wind vectors
ZP = 2.00 UT = 11.00 DOY = 324



Created: Fri Mar 11 14:07:14 2005

From: /tgcm/histories/secondary/November2003/November2003_AMIE_v3_50_65/324.nc

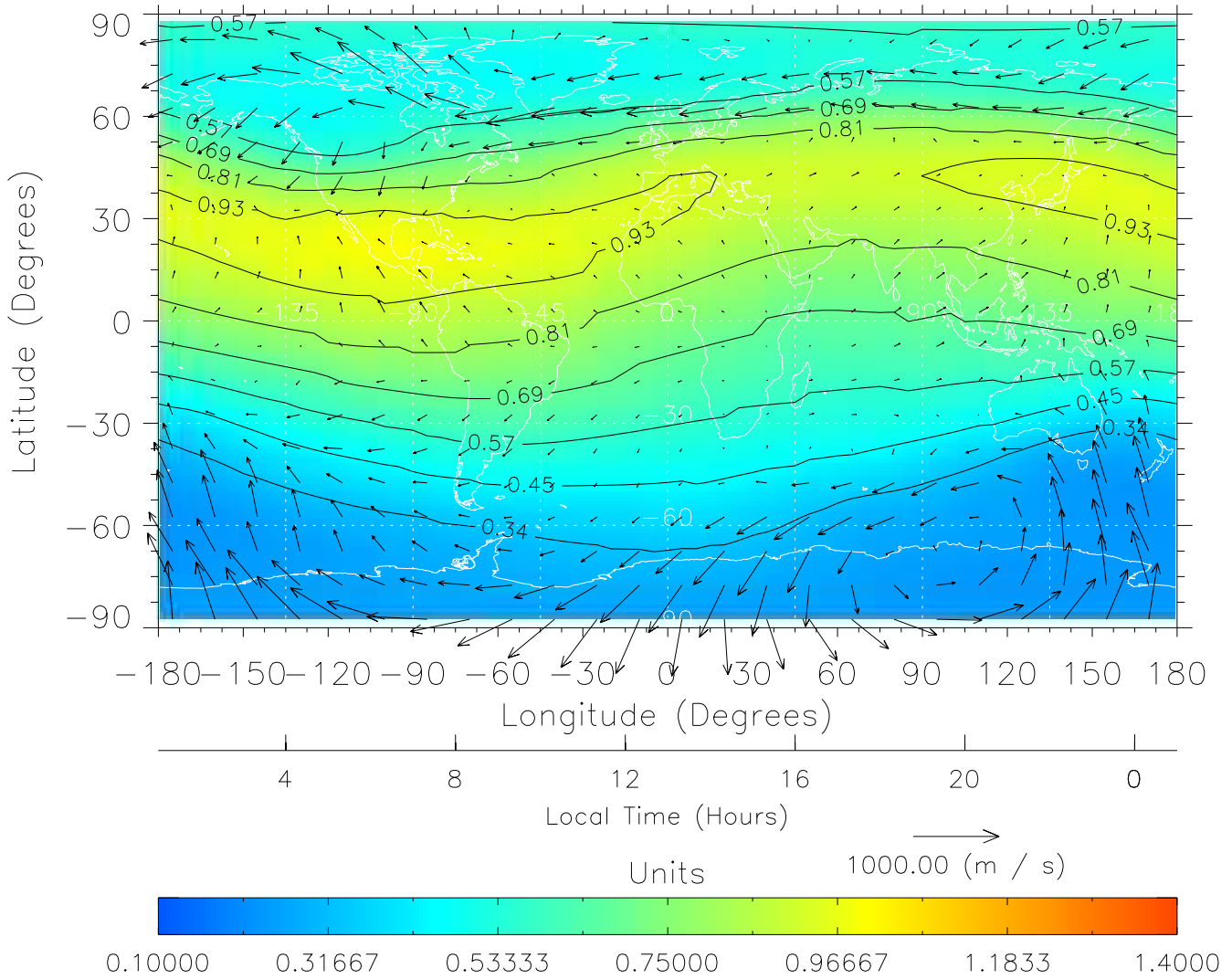
TIME-GCM MAP $\Sigma O/N_2$ with Neutral Wind vectors
ZP = 2.00 UT = 12.00 DOY = 324



Created: Fri Mar 11 14:07:14 2005

From: /tgcm/histories/secondary/November2003/November2003_AMIE_v3_50_65/324.nc

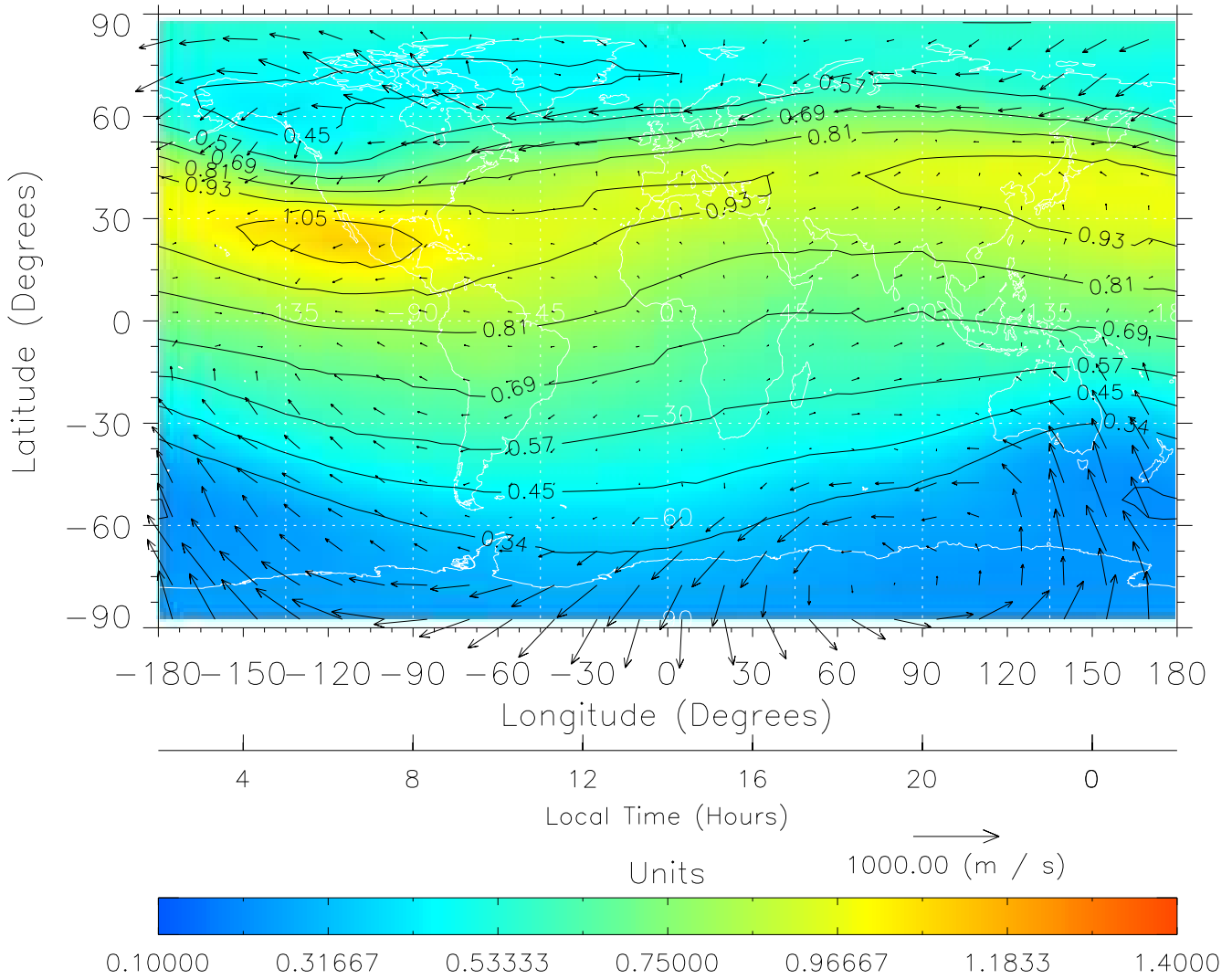
TIME-GCM MAP $\Sigma O/N_2$ with Neutral Wind vectors
ZP = 2.00 UT = 13.00 DOY = 324



Created: Fri Mar 11 14:07:15 2005

From: /tgcm/histories/secondary/November2003/November2003_AMIE_v3_50_65/324.nc

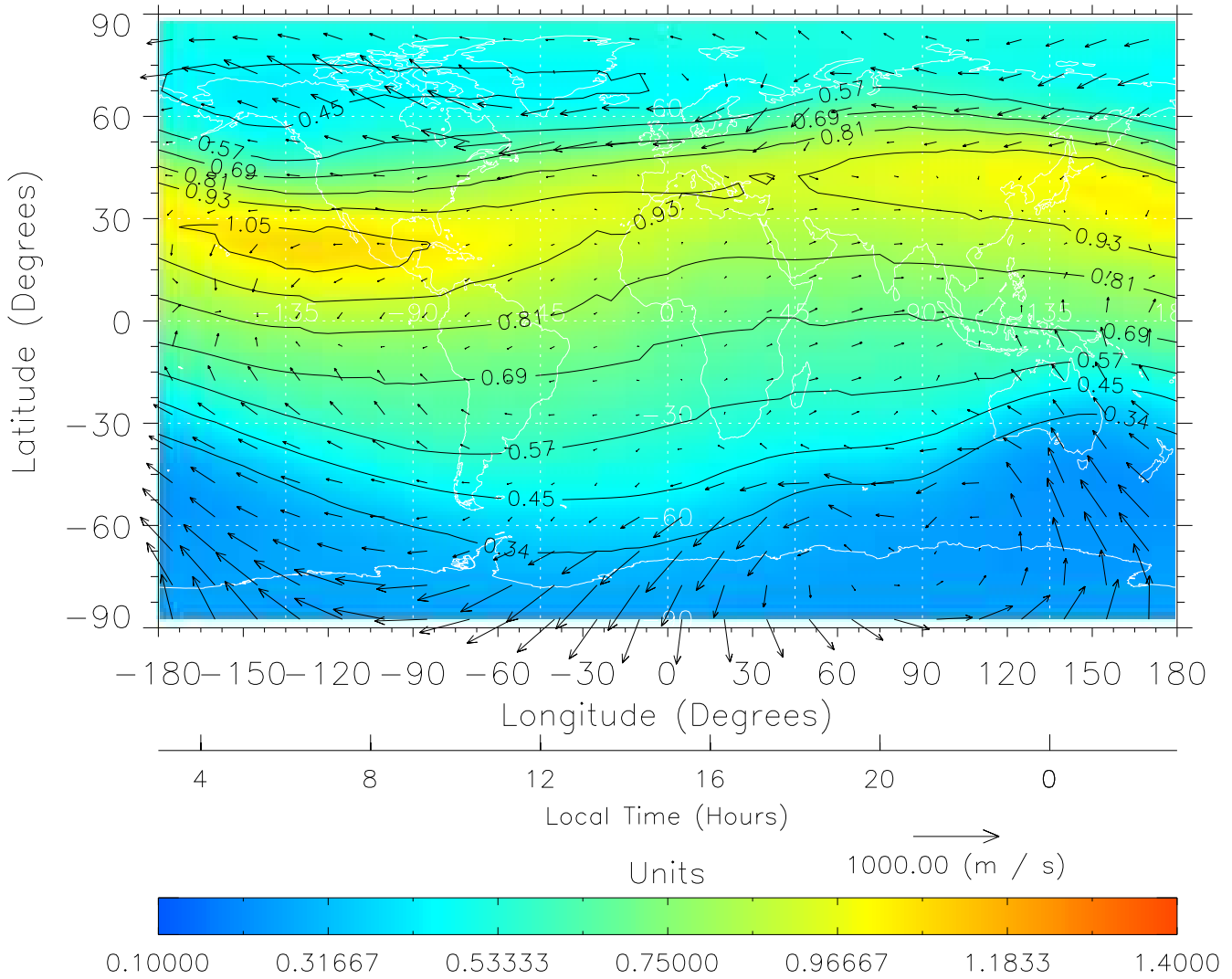
TIME-GCM MAP $\Sigma O/N_2$ with Neutral Wind vectors
 ZP = 2.00 UT = 14.00 DOY = 324



Created: Fri Mar 11 14:07:15 2005

From: /tgcm/histories/secondary/November2003/November2003_AMIE_v3_50_65/324.nc

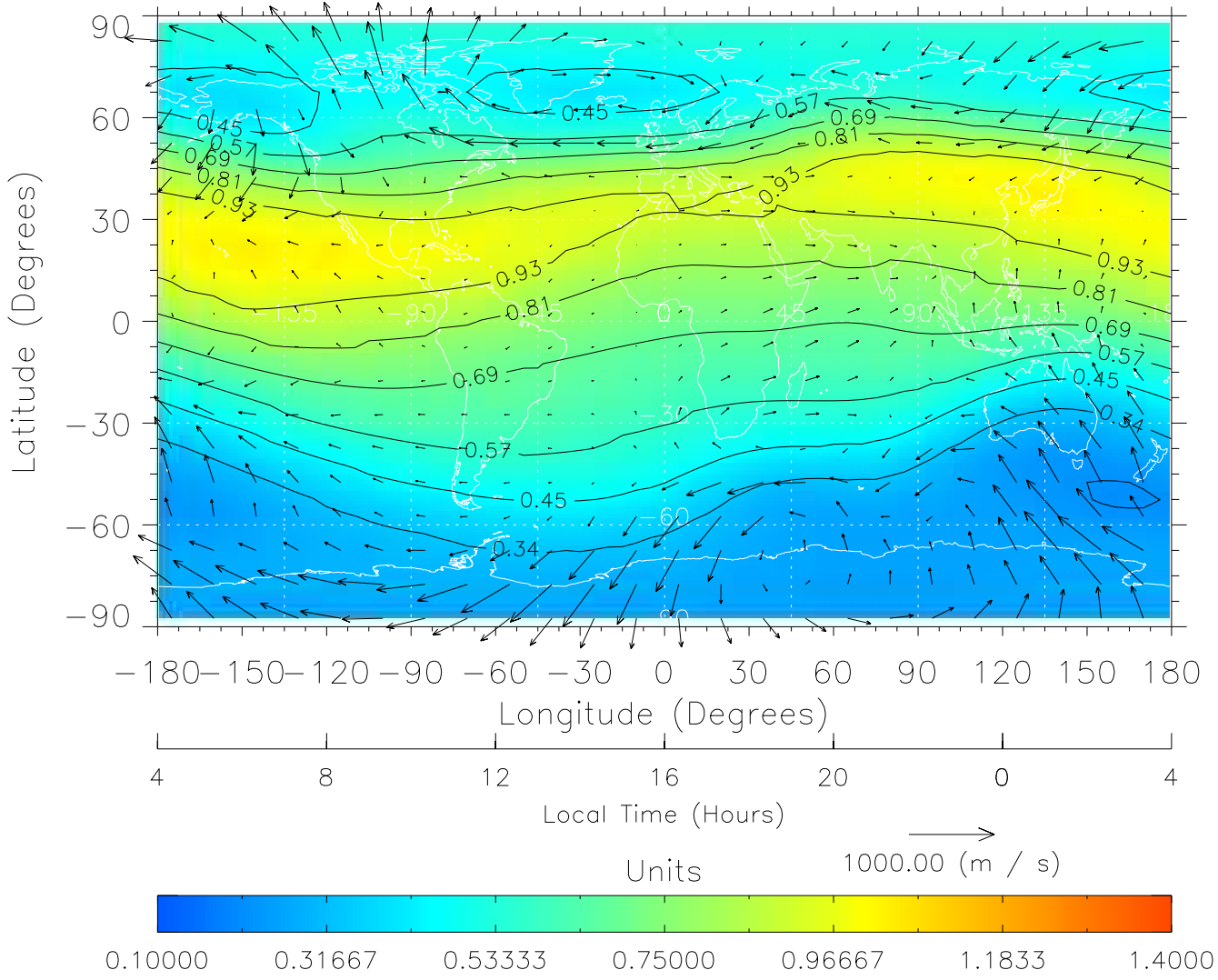
TIME-GCM MAP $\Sigma O/N_2$ with Neutral Wind vectors
ZP = 2.00 UT = 15.00 DOY = 324



Created: Fri Mar 11 14:07:16 2005

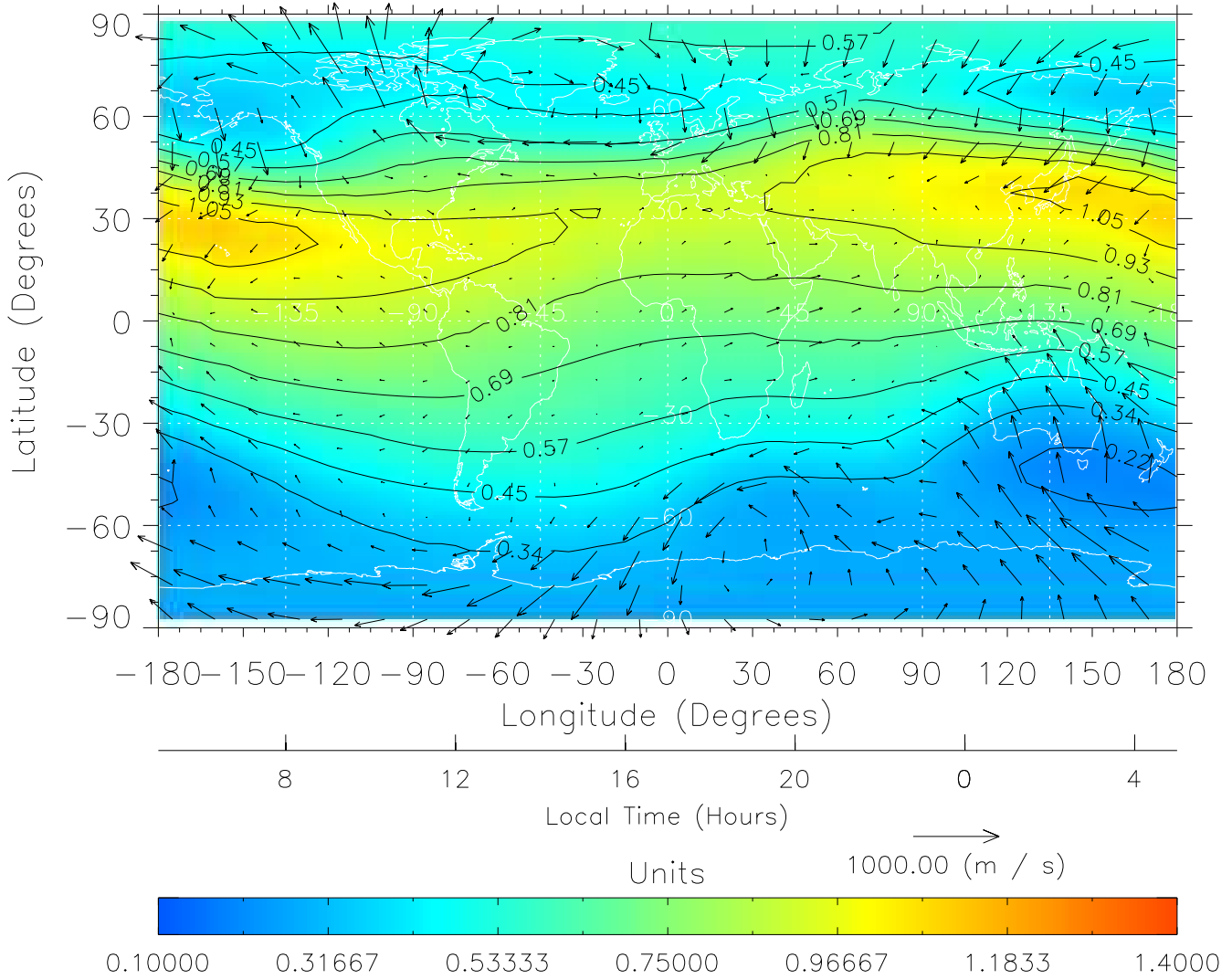
From: /tgcm/histories/secondary/November2003/November2003_AMIE_v3_50_65/324.nc

TIME-GCM MAP $\Sigma O/N_2$ with Neutral Wind vectors
 ZP = 2.00 UT = 16.00 DOY = 324



Created: Fri Mar 11 14:07:16 2005
 From: /tgcm/histories/secondary/November2003/November2003_AMIE_v3_50_65/324.nc

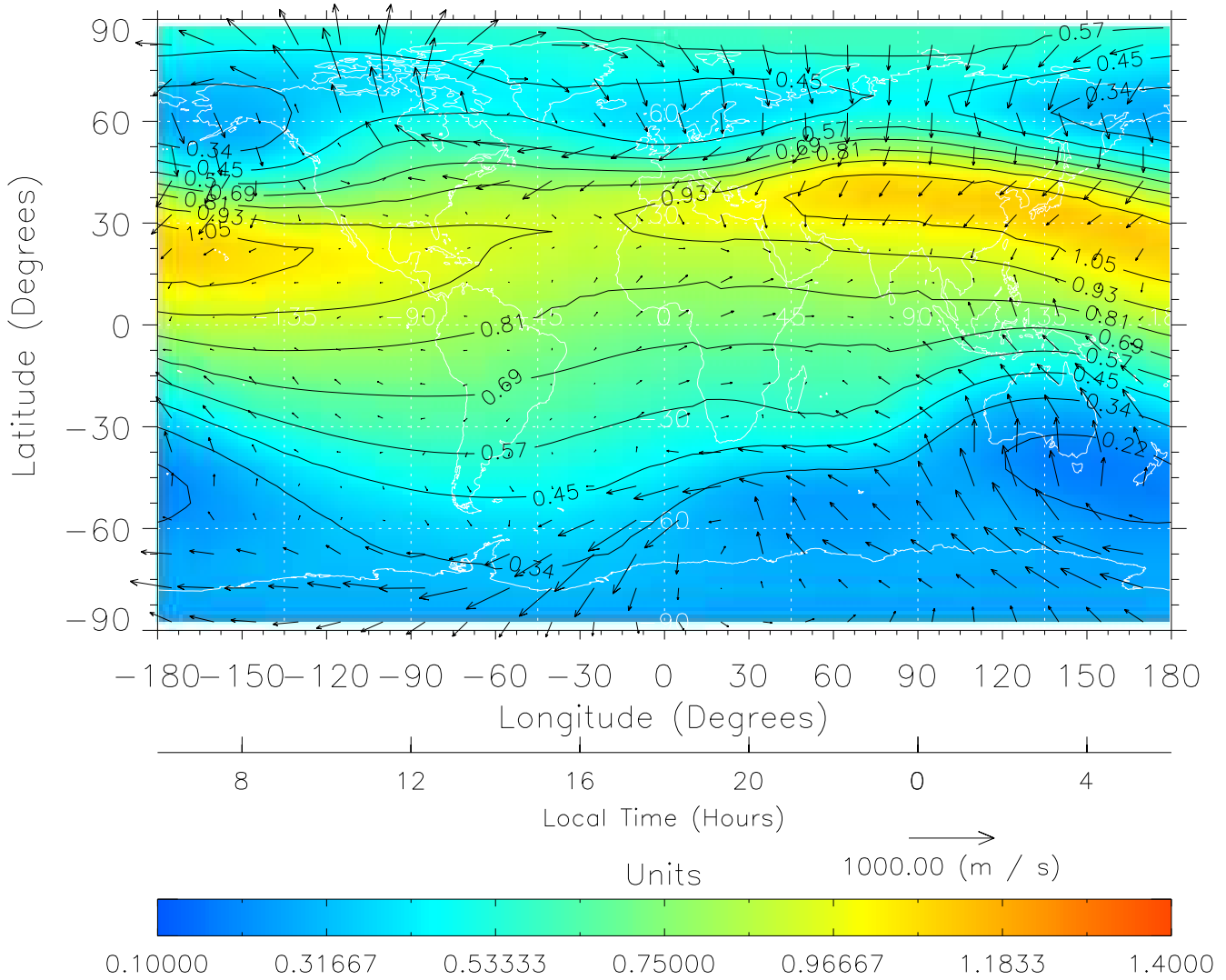
TIME-GCM MAP $\Sigma O/N_2$ with Neutral Wind vectors
ZP = 2.00 UT = 17.00 DOY = 324



Created: Fri Mar 11 14:07:17 2005

From: /tgcm/histories/secondary/November2003/November2003_AMIE_v3_50_65/324.nc

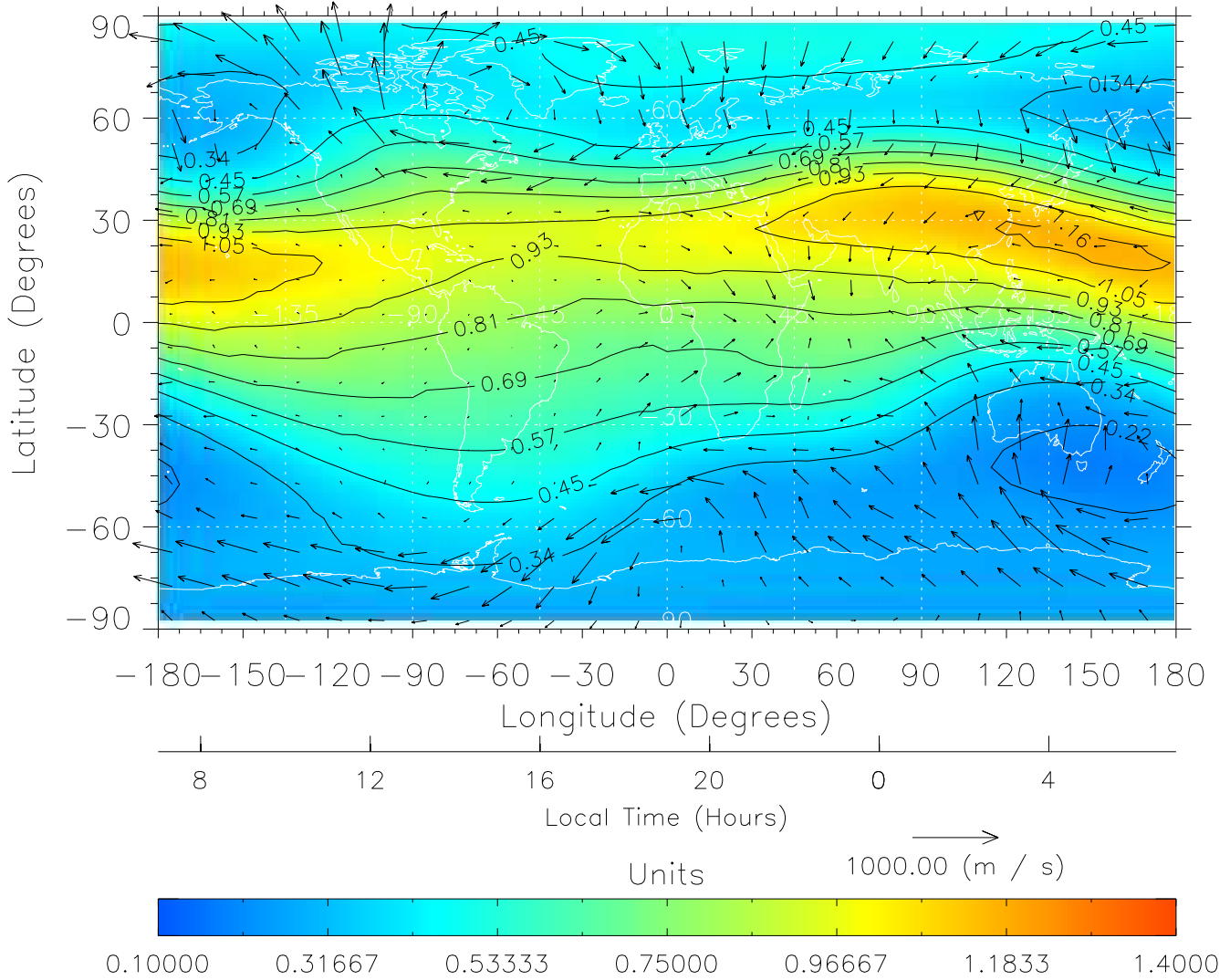
TIME-GCM MAP $\Sigma O/N_2$ with Neutral Wind vectors
 ZP = 2.00 UT = 18.00 DOY = 324



Created: Fri Mar 11 14:07:17 2005

From: /tgcm/histories/secondary/November2003/November2003_AMIE_v3_50_65/324.nc

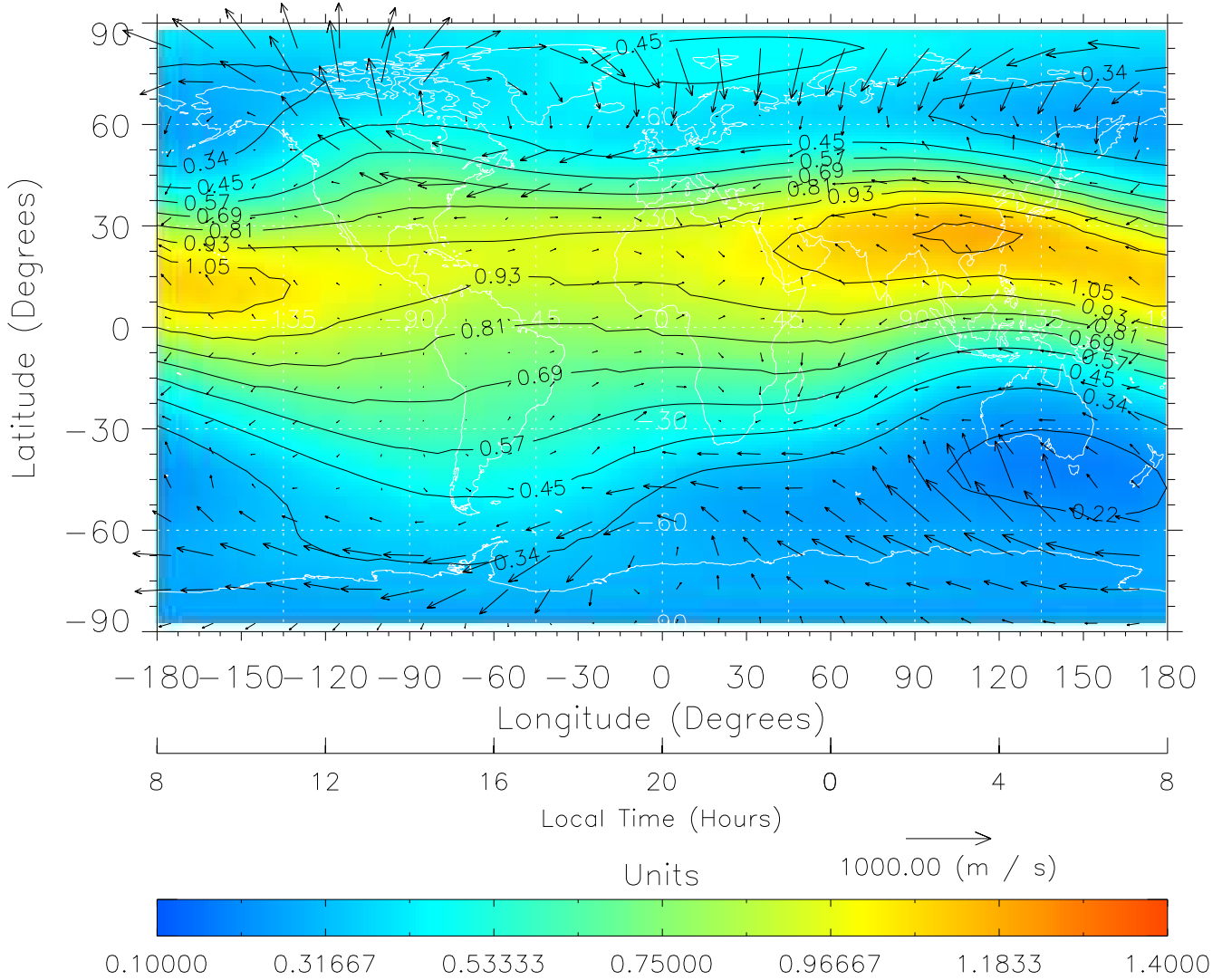
TIME-GCM MAP $\Sigma O/N_2$ with Neutral Wind vectors
 ZP = 2.00 UT = 19.00 DOY = 324



Created: Fri Mar 11 14:07:18 2005

From: /tgcm/histories/secondary/November2003/November2003_AMIE_v3_50_65/324.nc

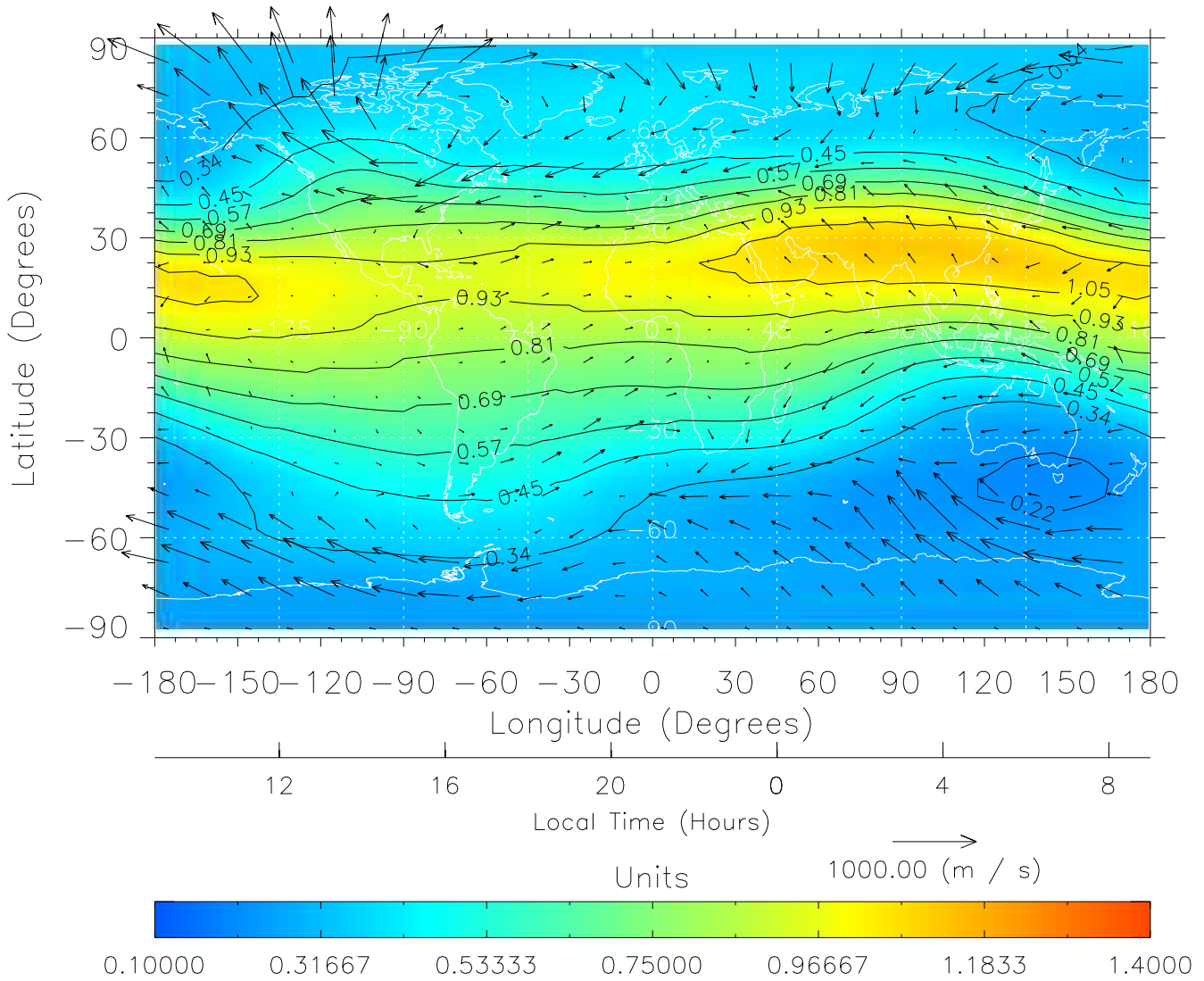
TIME-GCM MAP $\Sigma O/N_2$ with Neutral Wind vectors
 ZP = 2.00 UT = 20.00 DOY = 324



Created: Fri Mar 11 14:07:18 2005

From: /tgcm/histories/secondary/November2003/November2003_AMIE_v3_50_65/324.nc

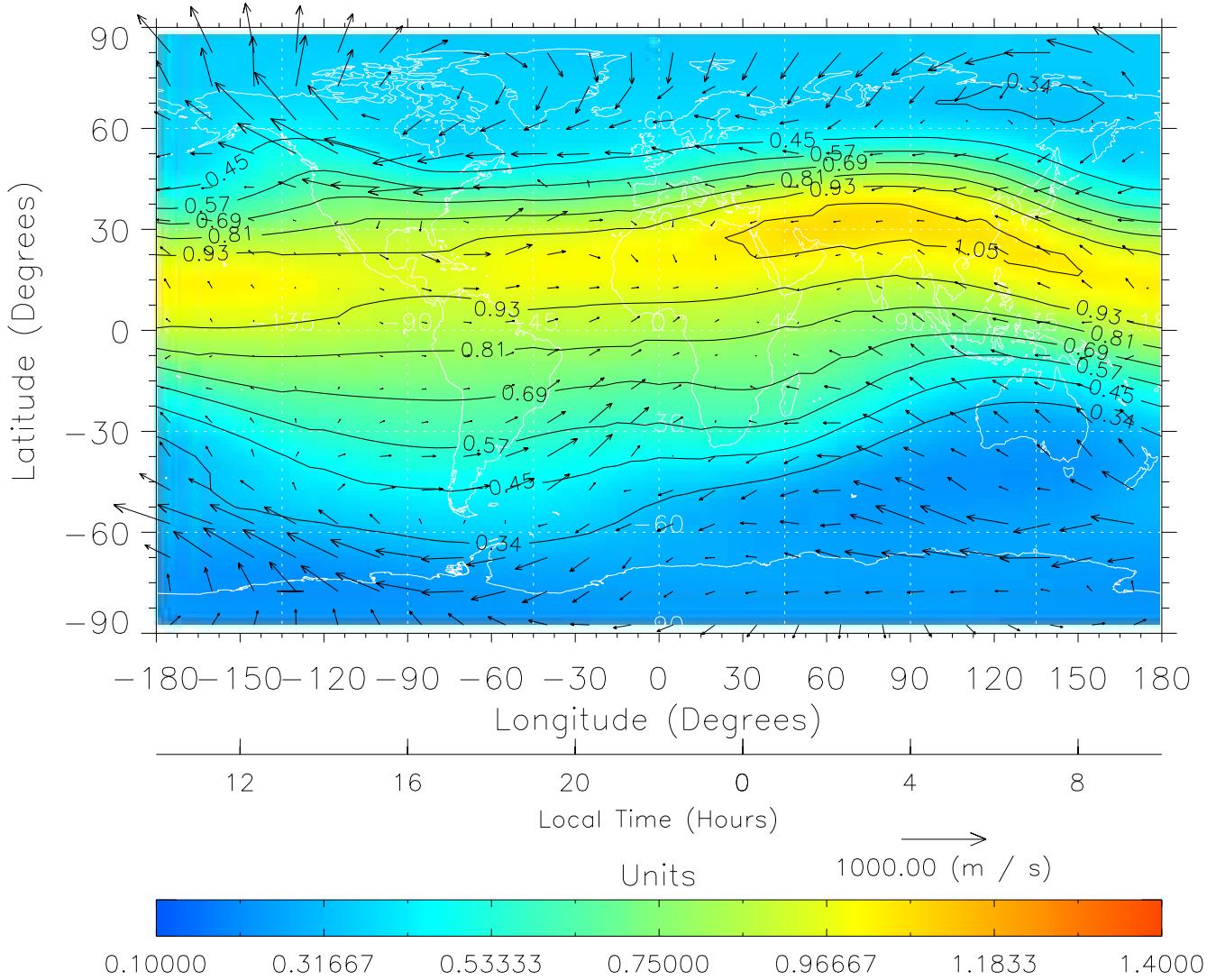
TIME-GCM MAP $\Sigma O/N_2$ with Neutral Wind vectors
 ZP = 2.00 UT = 21.00 DOY = 324



Created: Fri Mar 11 14:07:19 2005

From: /tgcm/histories/secondary/November2003/November2003_AMIE_v3_50_65/324.nc

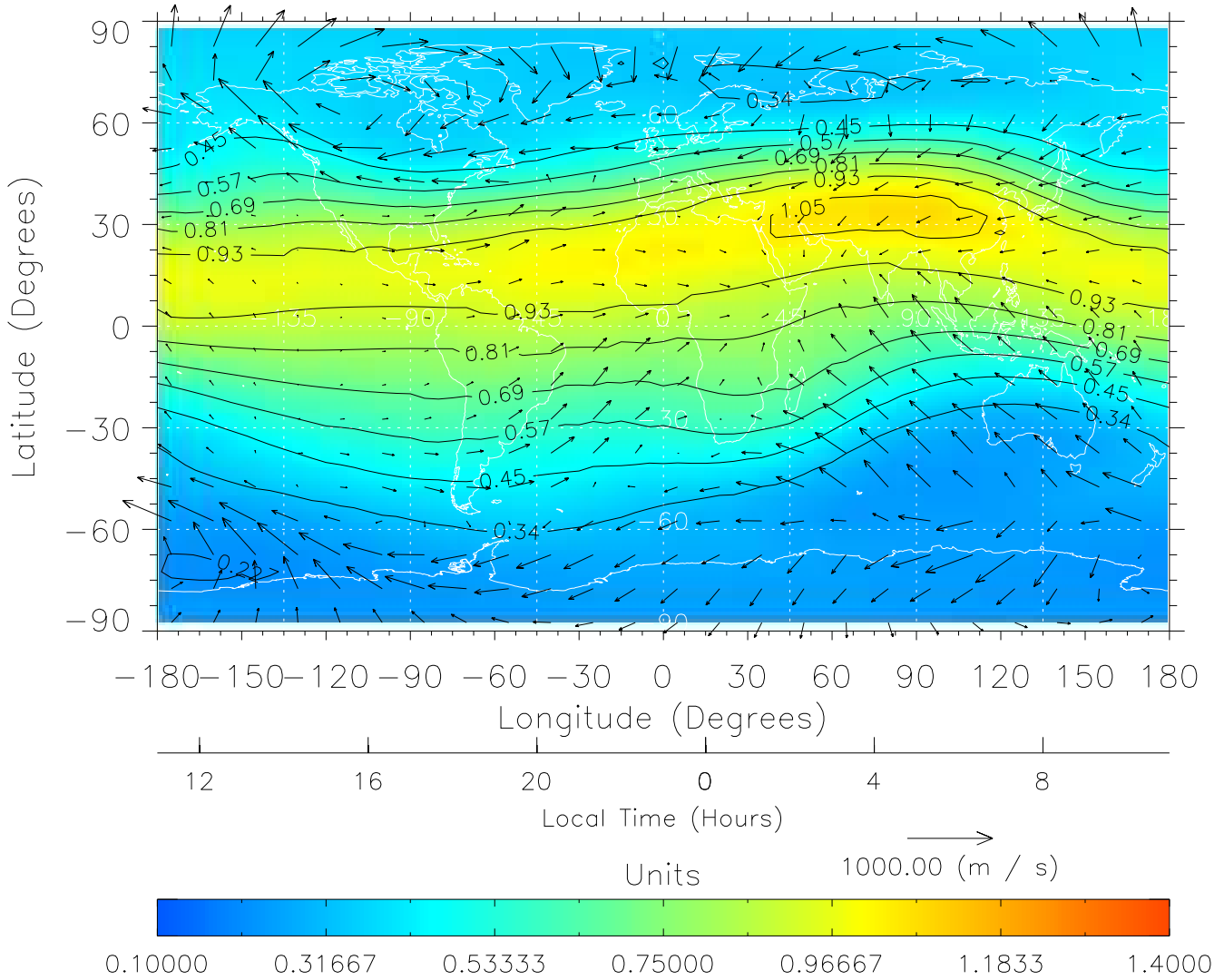
TIME-GCM MAP $\Sigma O/N_2$ with Neutral Wind vectors
ZP = 2.00 UT = 22.00 DOY = 324



Created: Fri Mar 11 14:07:19 2005

From: /tgcm/histories/secondary/November2003/November2003_AMIE_v3_50_65/324.nc

TIME-GCM MAP $\Sigma O/N_2$ with Neutral Wind vectors
ZP = 2.00 UT = 23.00 DOY = 324



Created: Fri Mar 11 14:07:19 2005

From: /tgcm/histories/secondary/November2003/November2003_AMIE_v3_50_65/324.nc