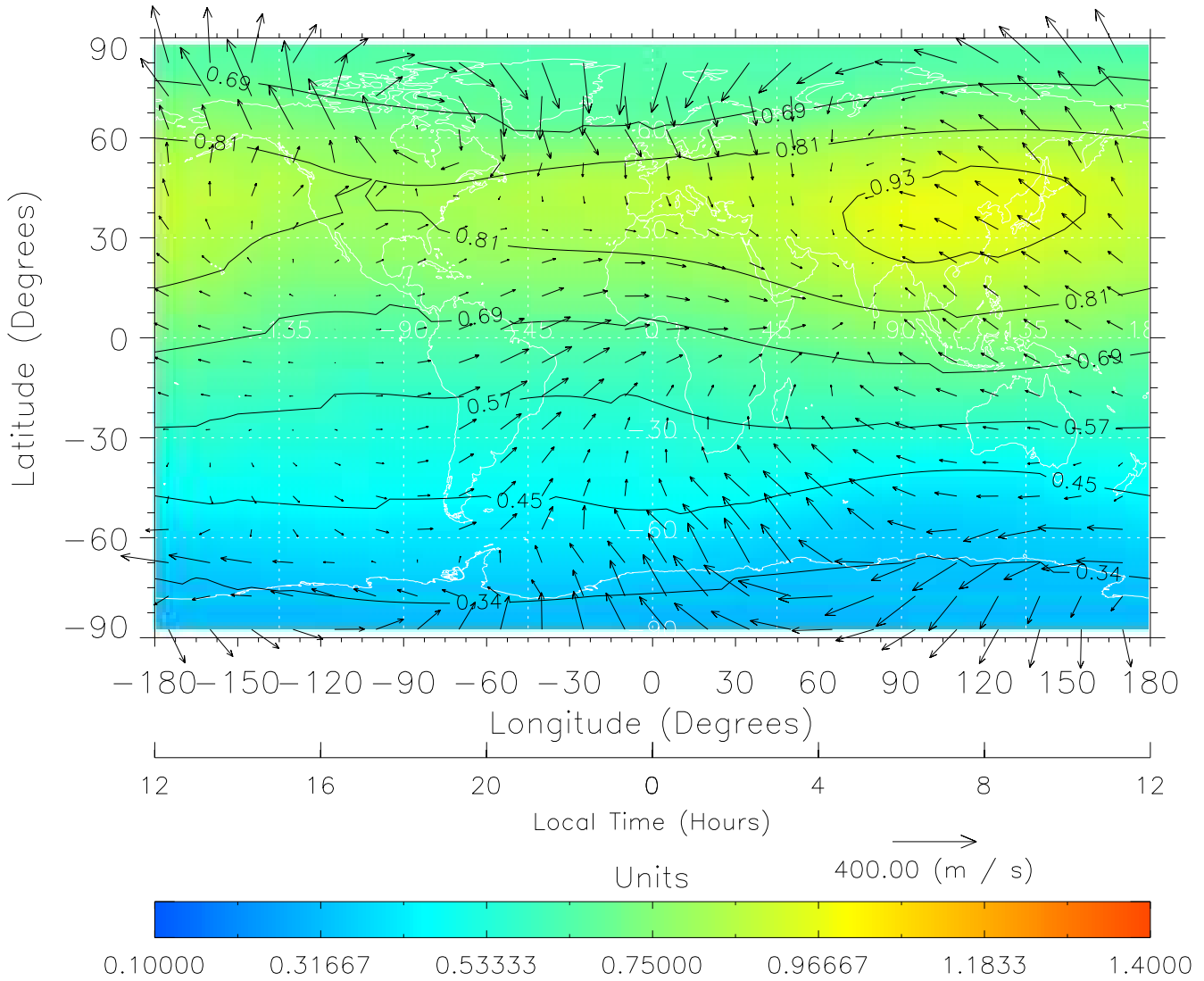


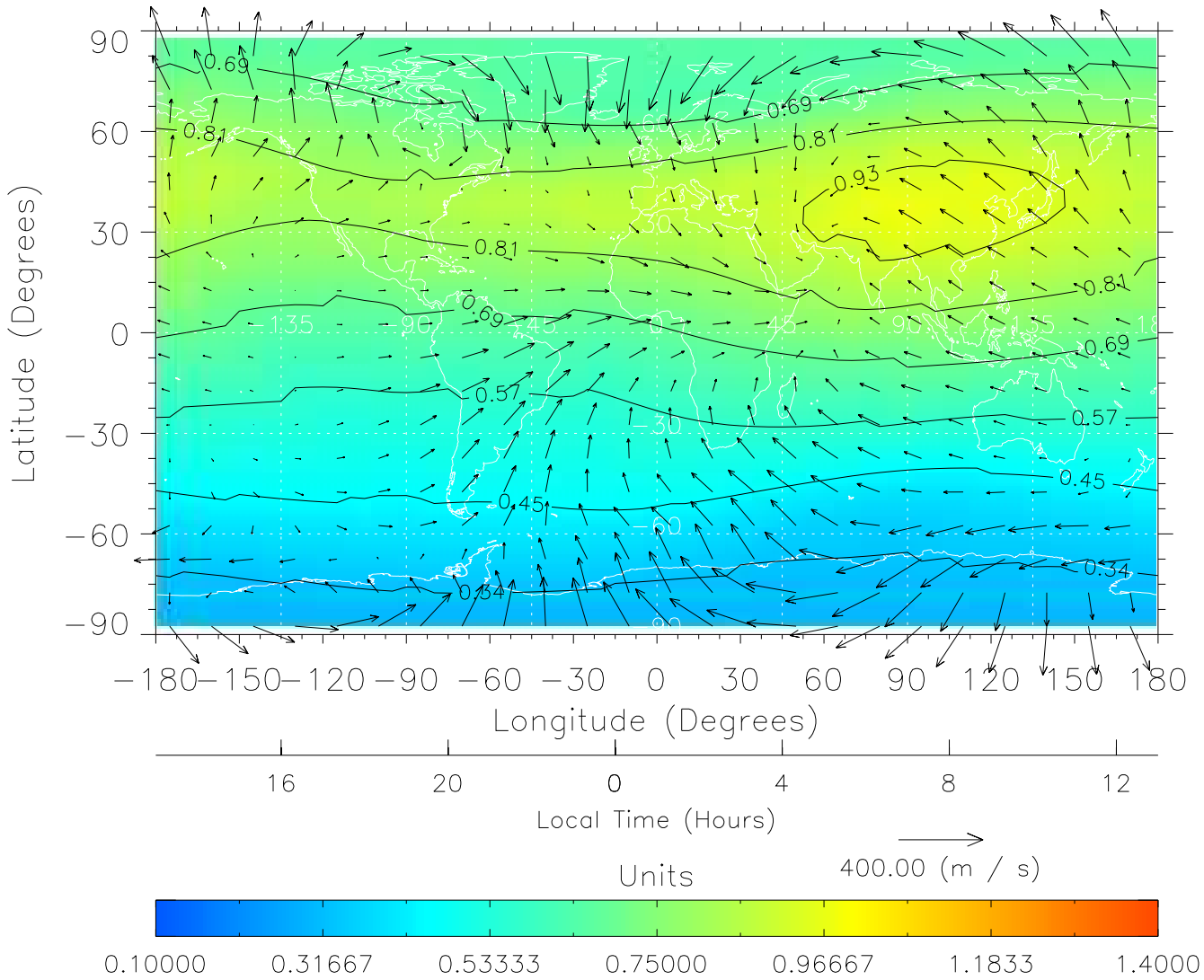
TIME-GCM MAP $\Sigma O/N_2$ with Neutral Wind vectors
ZP = 2.00 UT = 0.00 DOY = 323



Created: Fri Mar 11 14:05:02 2005

From: /tgcm/histories/secondary/November2003/November2003_AMIE_v3_50_65/323.nc

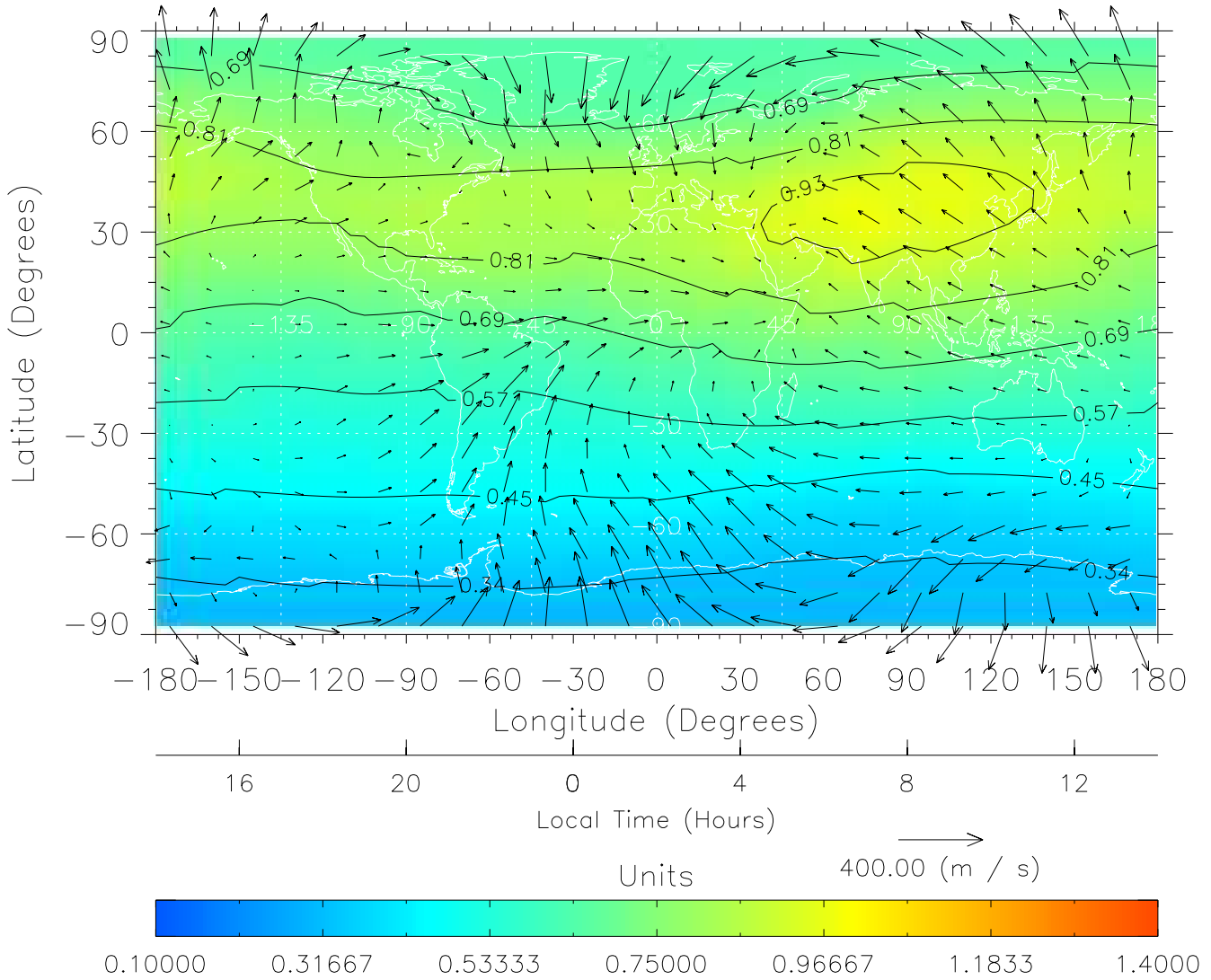
TIME-GCM MAP $\Sigma O/N_2$ with Neutral Wind vectors
ZP = 2.00 UT = 1.00 DOY = 323



Created: Fri Mar 11 14:05:02 2005

From: /tgcm/histories/secondary/November2003/November2003_AMIE_v3_50_65/323.nc

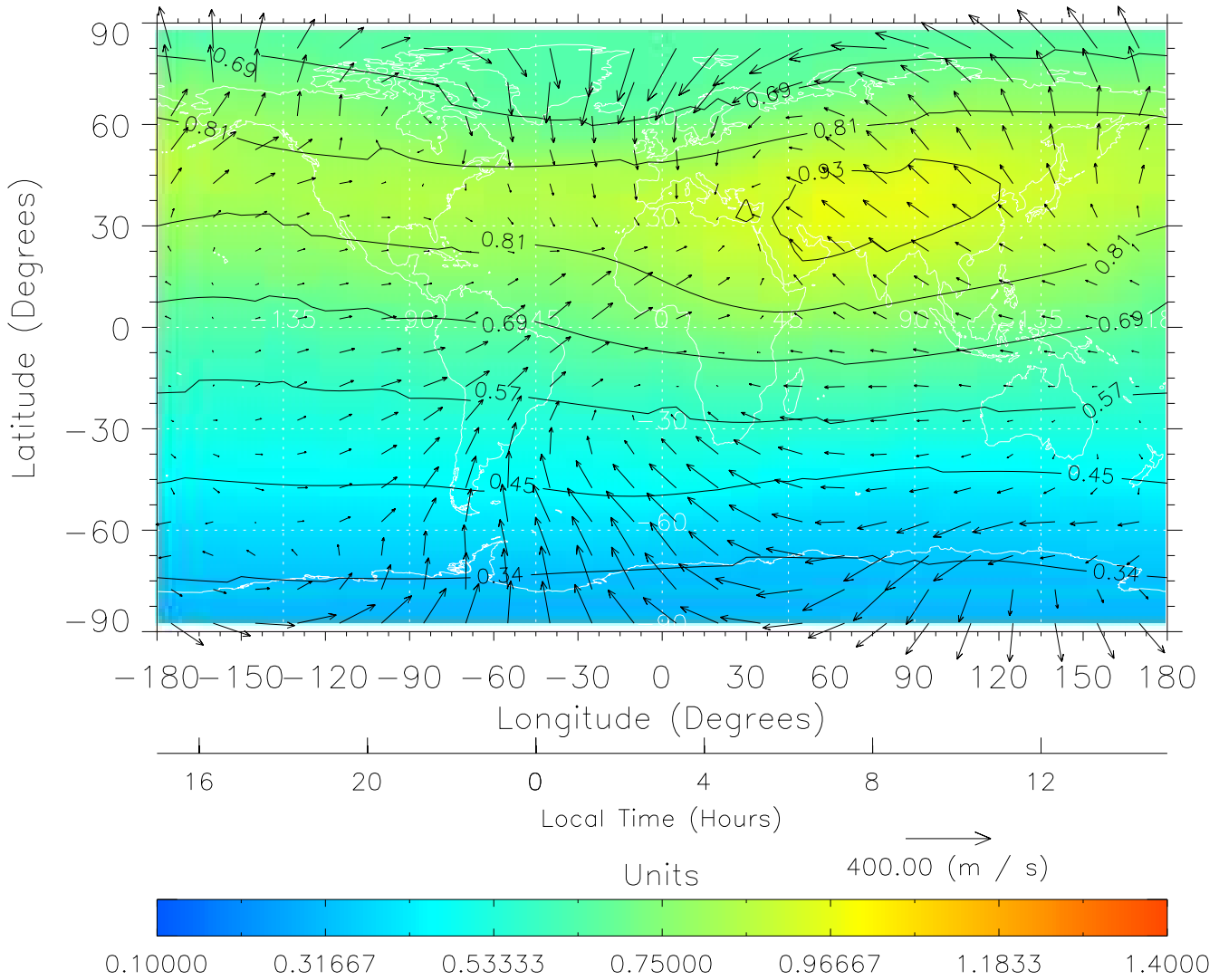
TIME-GCM MAP $\Sigma O/N_2$ with Neutral Wind vectors
ZP = 2.00 UT = 2.00 DOY = 323



Created: Fri Mar 11 14:05:03 2005

From: /tgcm/histories/secondary/November2003/November2003_AMIE_v3_50_65/323.nc

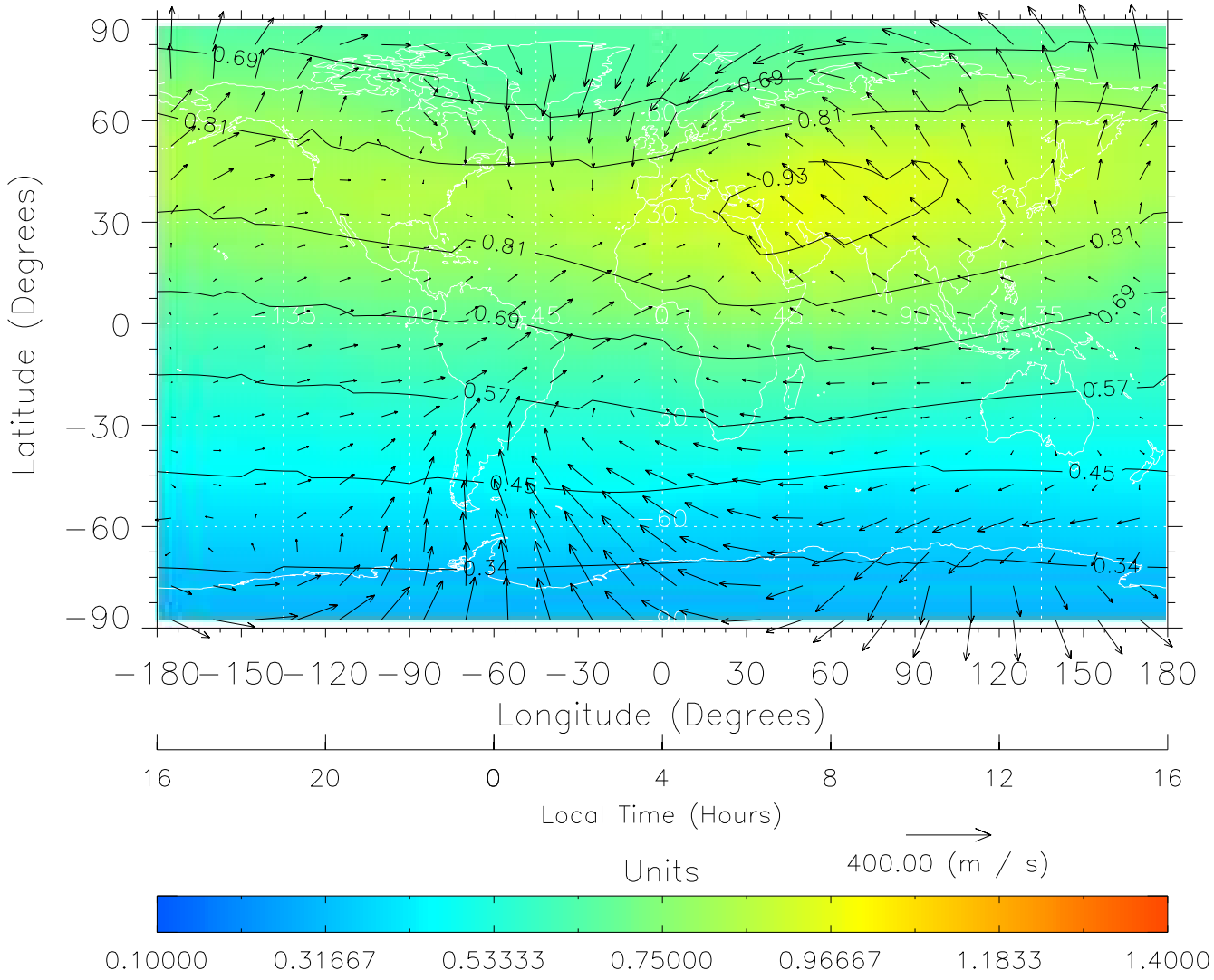
TIME-GCM MAP $\Sigma O/N_2$ with Neutral Wind vectors
ZP = 2.00 UT = 3.00 DOY = 323



Created: Fri Mar 11 14:05:03 2005

From: /tgcm/histories/secondary/November2003/November2003_AMIE_v3_50_65/323.nc

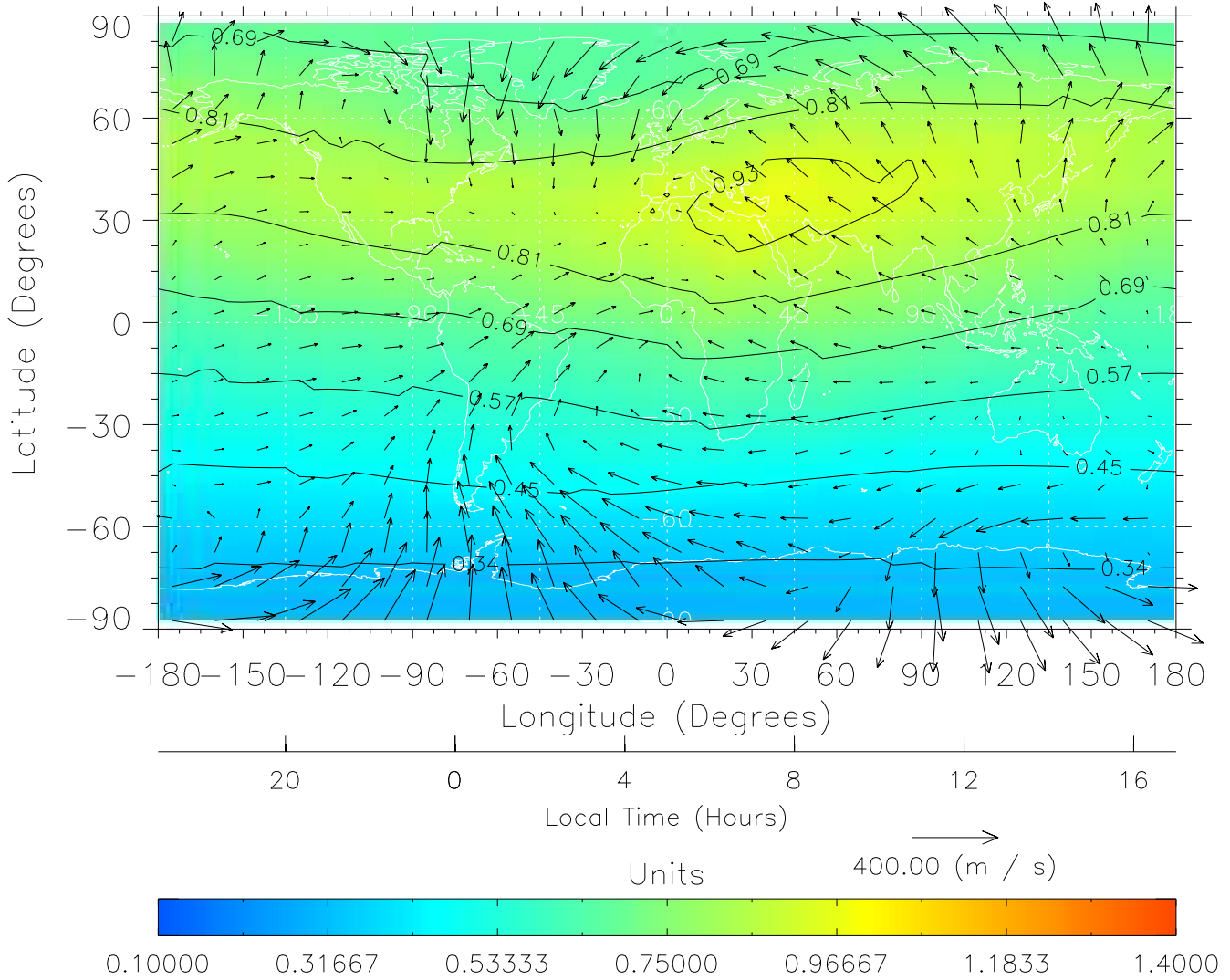
TIME-GCM MAP $\Sigma O/N_2$ with Neutral Wind vectors
ZP = 2.00 UT = 4.00 DOY = 323



Created: Fri Mar 11 14:05:04 2005

From: /tgcm/histories/secondary/November2003/November2003_AMIE_v3_50_65/323.nc

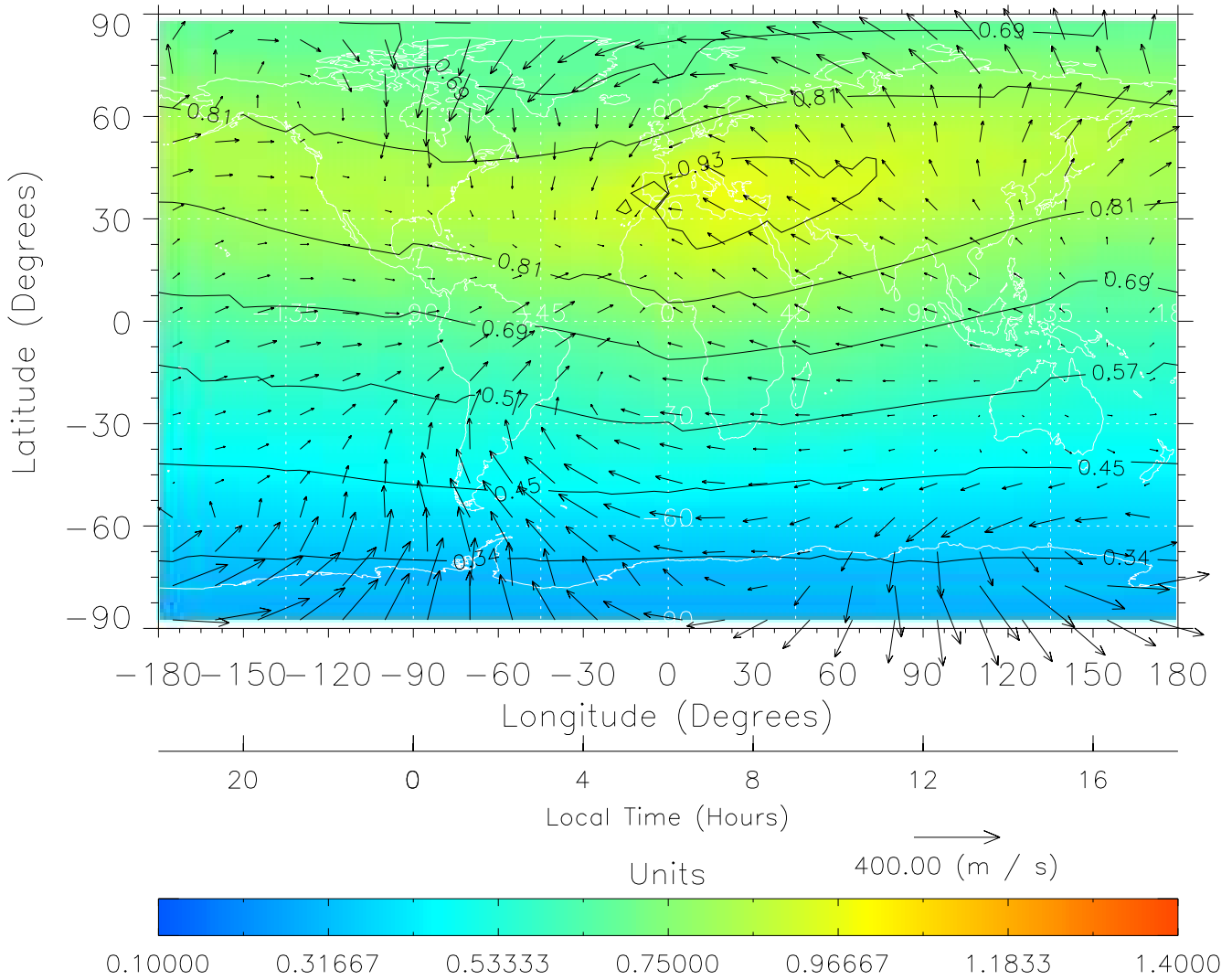
TIME-GCM MAP $\Sigma O/N_2$ with Neutral Wind vectors
ZP = 2.00 UT = 5.00 DOY = 323



Created: Fri Mar 11 14:05:04 2005

From: /tgcm/histories/secondary/November2003/November2003_AMIE_v3_50_65/323.nc

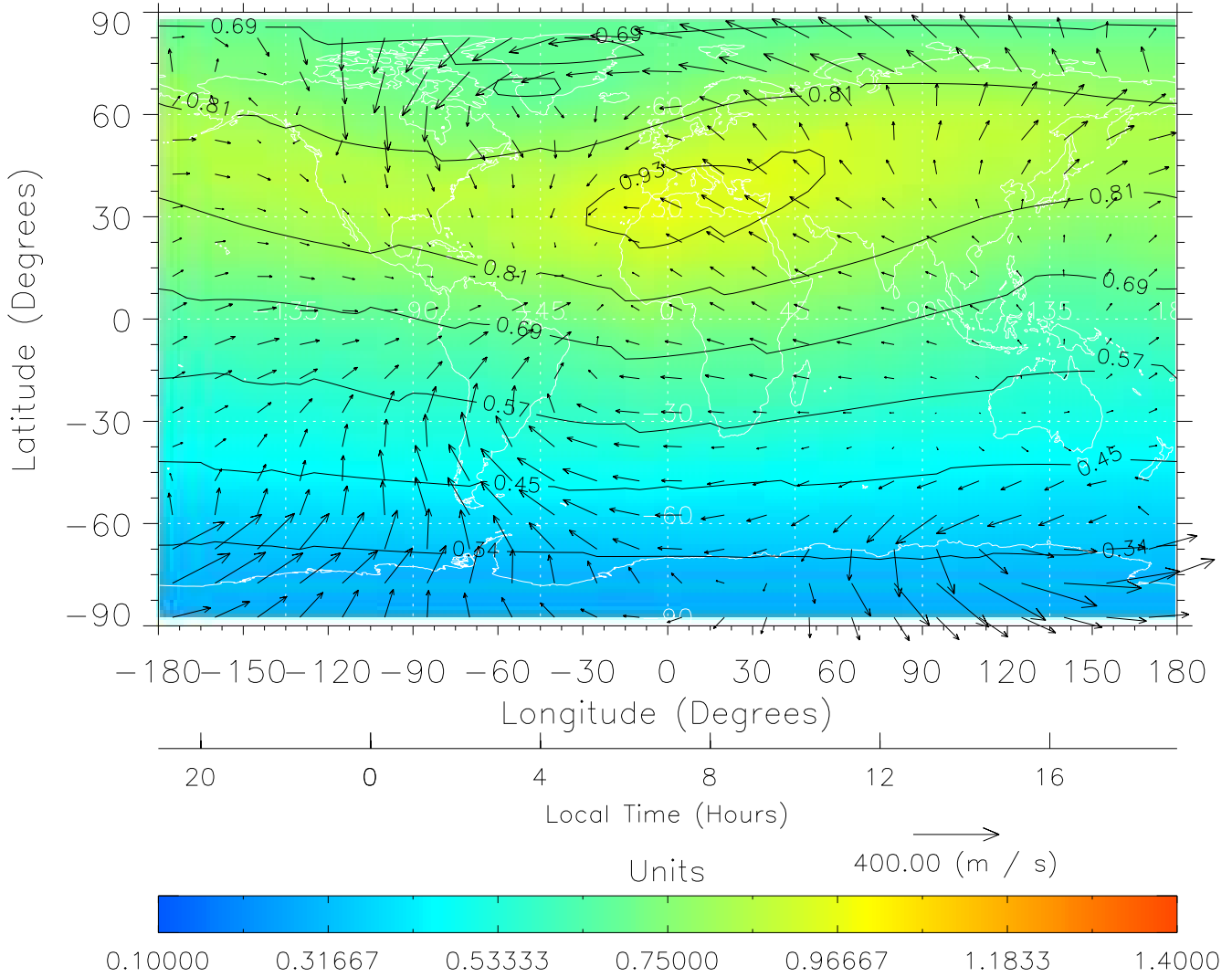
TIME-GCM MAP $\Sigma O/N_2$ with Neutral Wind vectors
ZP = 2.00 UT = 6.00 DOY = 323



Created: Fri Mar 11 14:05:05 2005

From: /tgcm/histories/secondary/November2003/November2003_AMIE_v3_50_65/323.nc

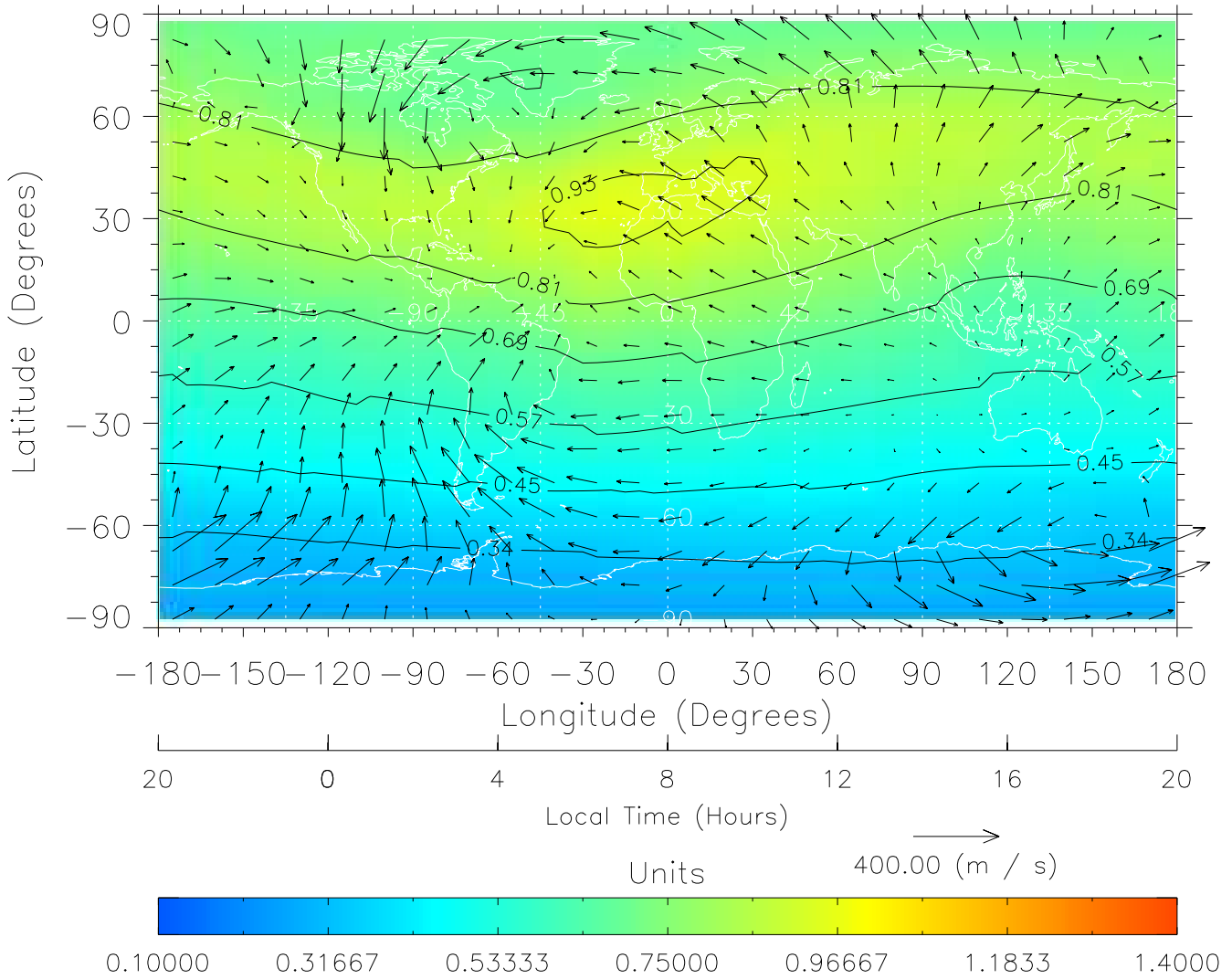
TIME-GCM MAP $\Sigma O/N_2$ with Neutral Wind vectors
ZP = 2.00 UT = 7.00 DOY = 323



Created: Fri Mar 11 14:05:05 2005

From: /tgcm/histories/secondary/November2003/November2003_AMIE_v3_50_65/323.nc

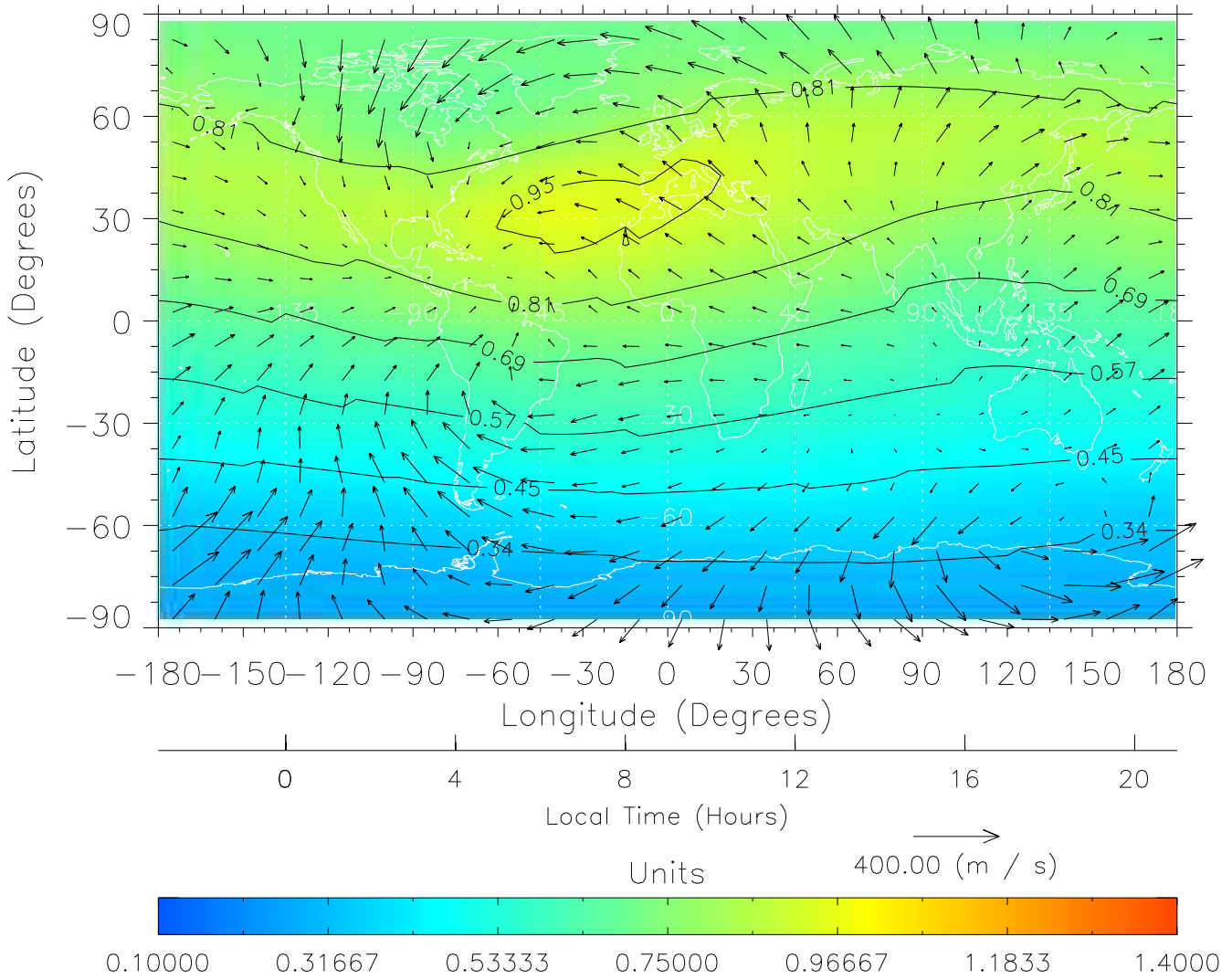
TIME-GCM MAP $\Sigma O/N_2$ with Neutral Wind vectors
ZP = 2.00 UT = 8.00 DOY = 323



Created: Fri Mar 11 14:05:05 2005

From: /tgcm/histories/secondary/November2003/November2003_AMIE_v3_50_65/323.nc

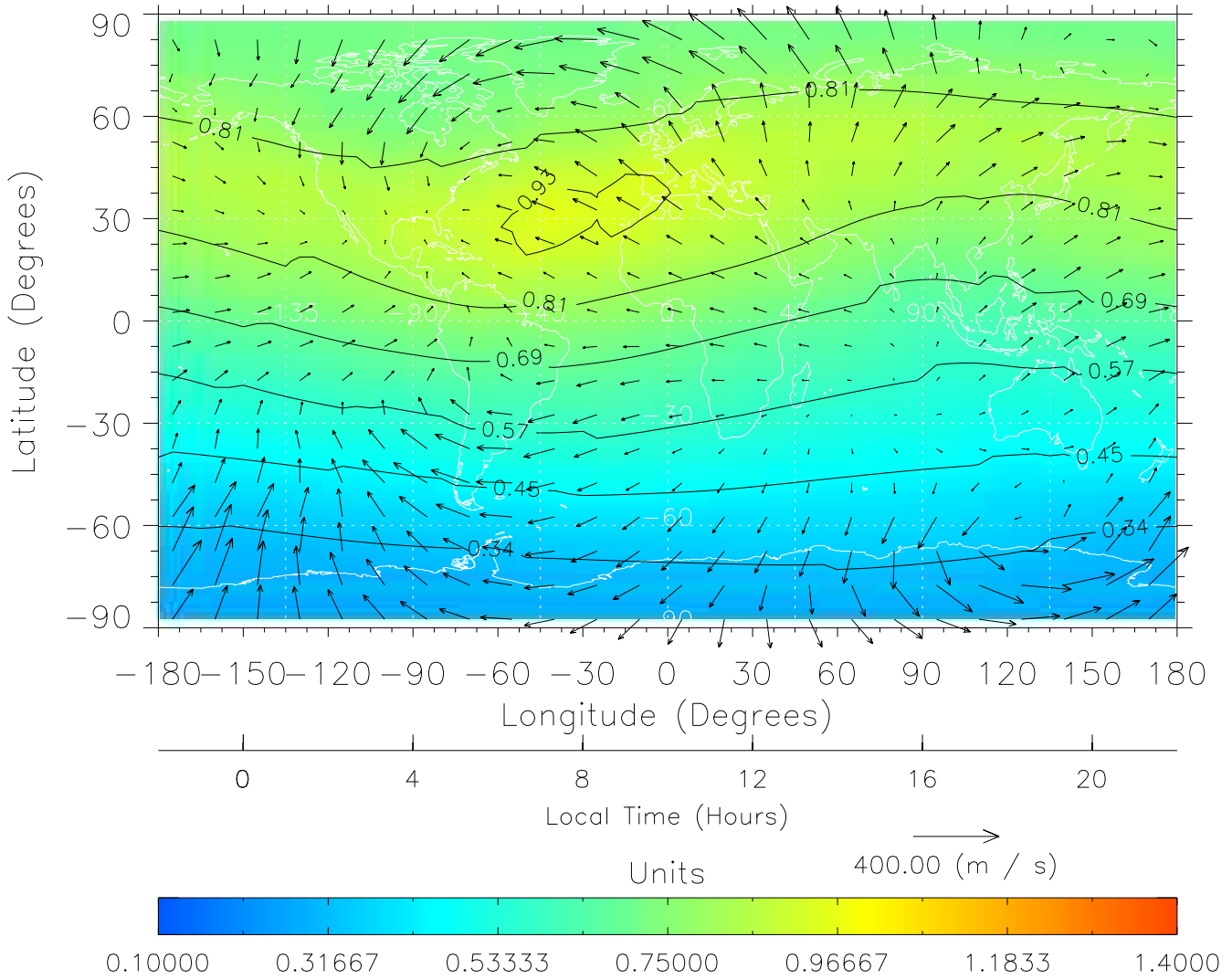
TIME-GCM MAP $\Sigma O/N_2$ with Neutral Wind vectors
ZP = 2.00 UT = 9.00 DOY = 323



Created: Fri Mar 11 14:05:06 2005

From: /tgcm/histories/secondary/November2003/November2003_AMIE_v3_50_65/323.nc

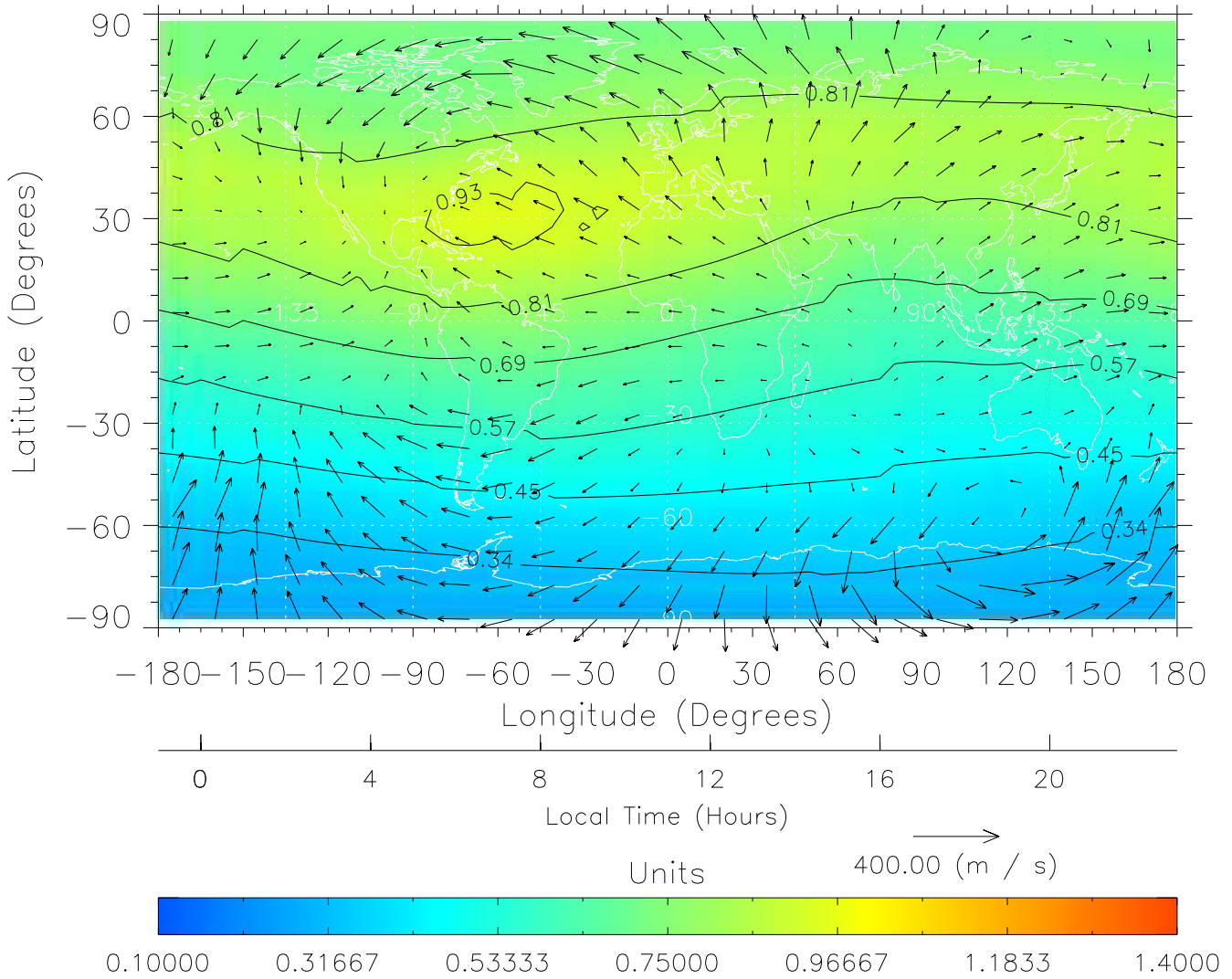
TIME-GCM MAP $\Sigma O/N_2$ with Neutral Wind vectors
ZP = 2.00 UT = 10.00 DOY = 323



Created: Fri Mar 11 14:05:06 2005

From: /tgcm/histories/secondary/November2003/November2003_AMIE_v3_50_65/323.nc

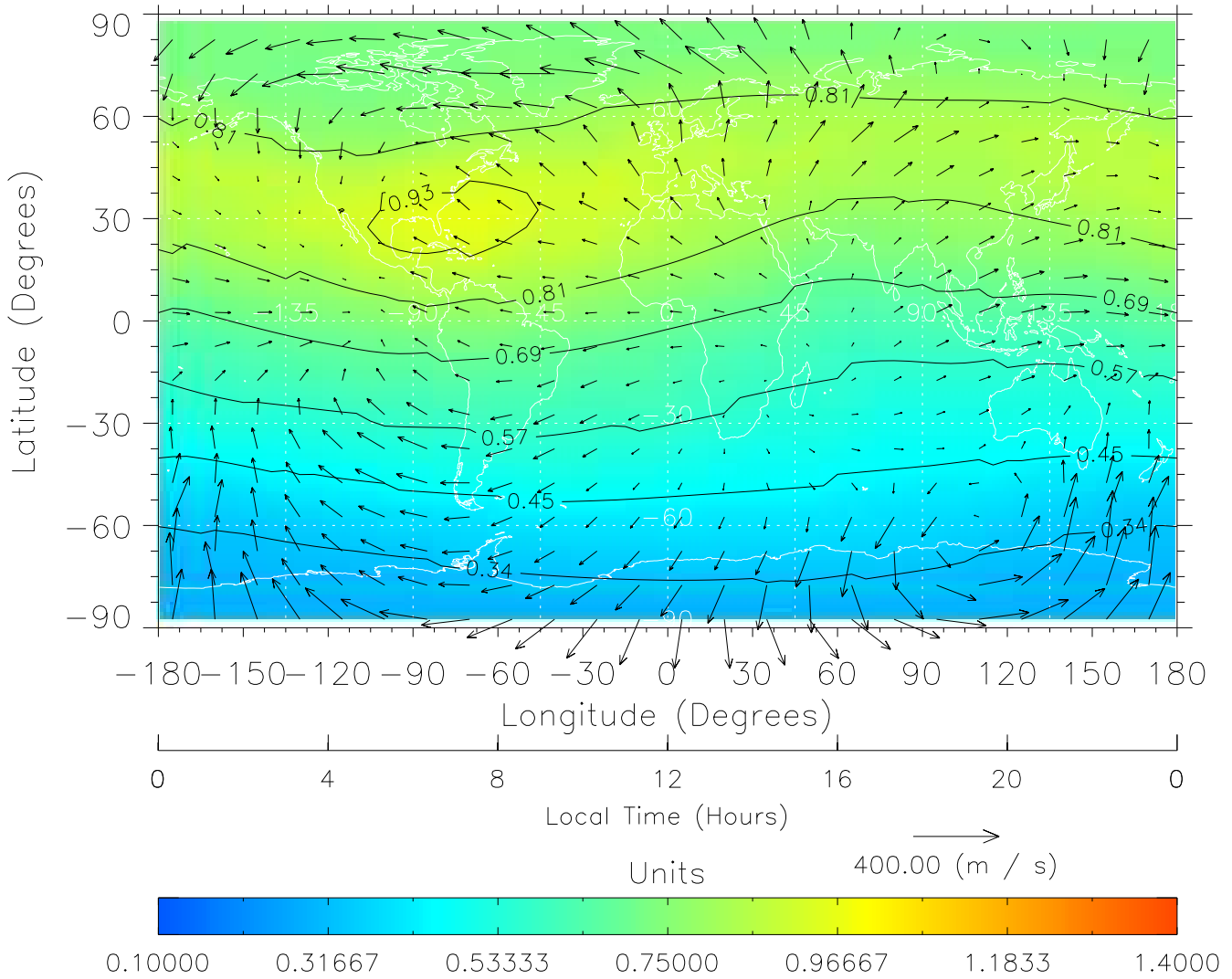
TIME-GCM MAP $\Sigma O/N_2$ with Neutral Wind vectors
ZP = 2.00 UT = 11.00 DOY = 323



Created: Fri Mar 11 14:05:07 2005

From: /tgcm/histories/secondary/November2003/November2003_AMIE_v3_50_65/323.nc

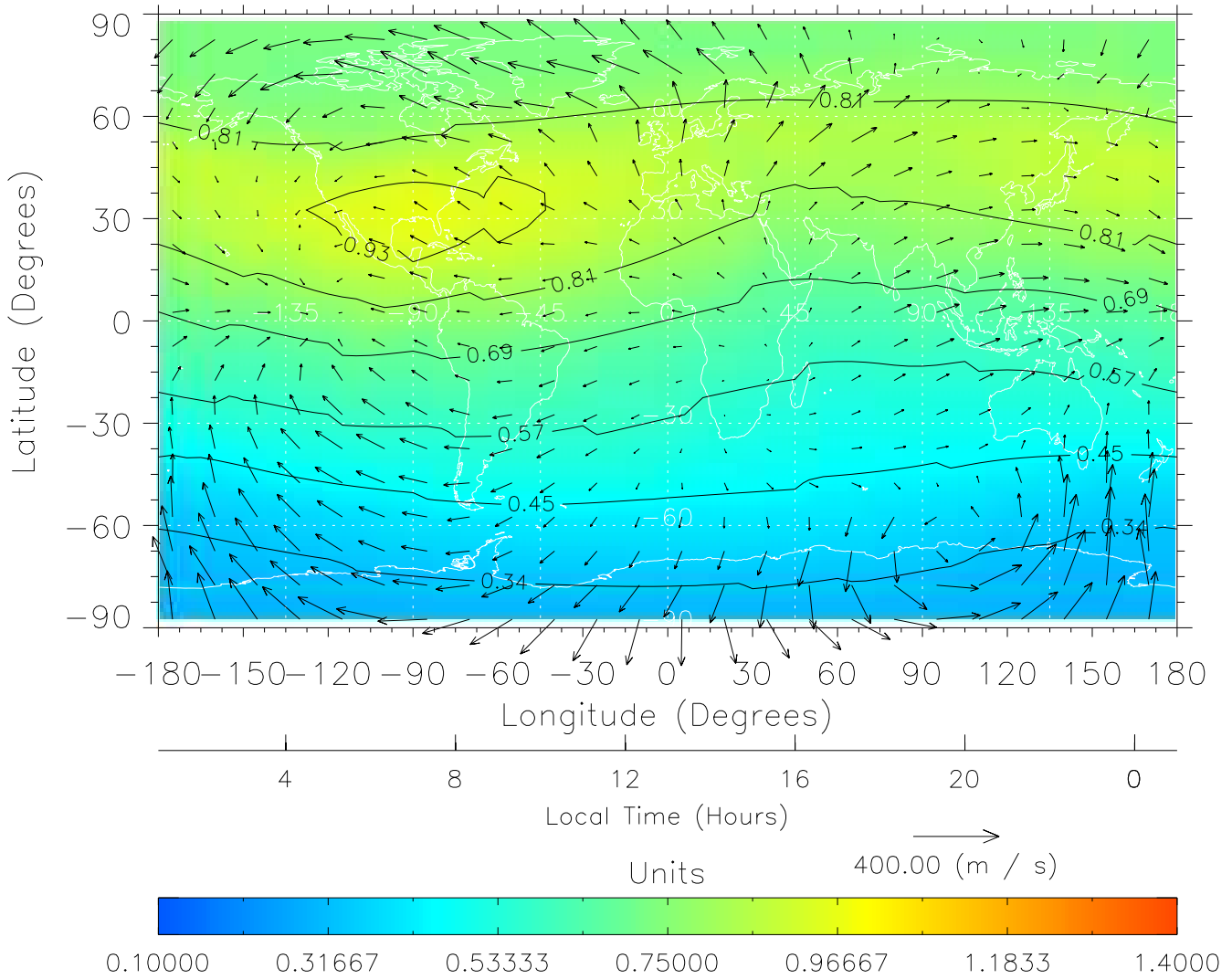
TIME-GCM MAP $\Sigma O/N_2$ with Neutral Wind vectors
ZP = 2.00 UT = 12.00 DOY = 323



Created: Fri Mar 11 14:05:07 2005

From: /tgcm/histories/secondary/November2003/November2003_AMIE_v3_50_65/323.nc

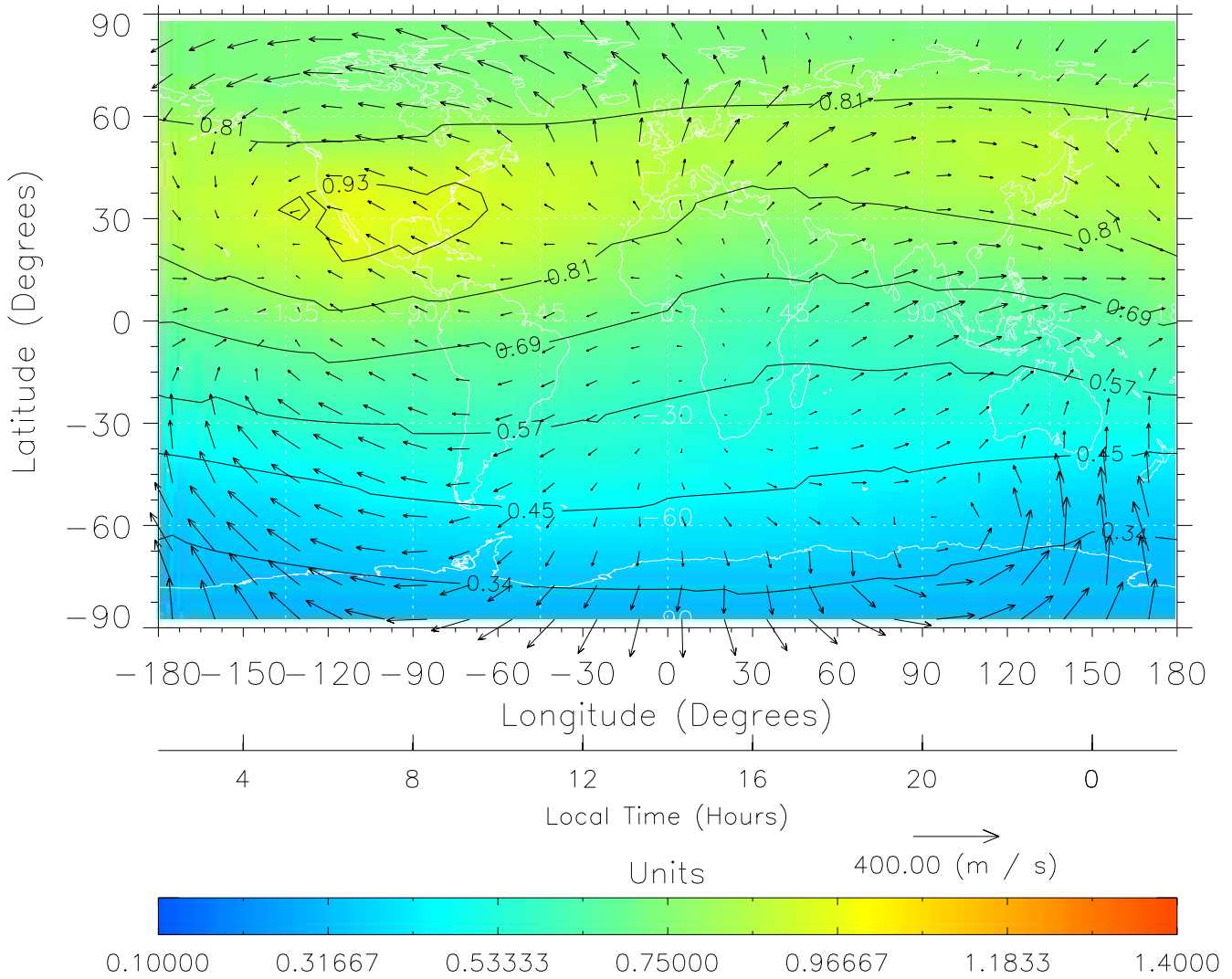
TIME-GCM MAP $\Sigma O/N_2$ with Neutral Wind vectors
ZP = 2.00 UT = 13.00 DOY = 323



Created: Fri Mar 11 14:05:08 2005

From: /tgcm/histories/secondary/November2003/November2003_AMIE_v3_50_65/323.nc

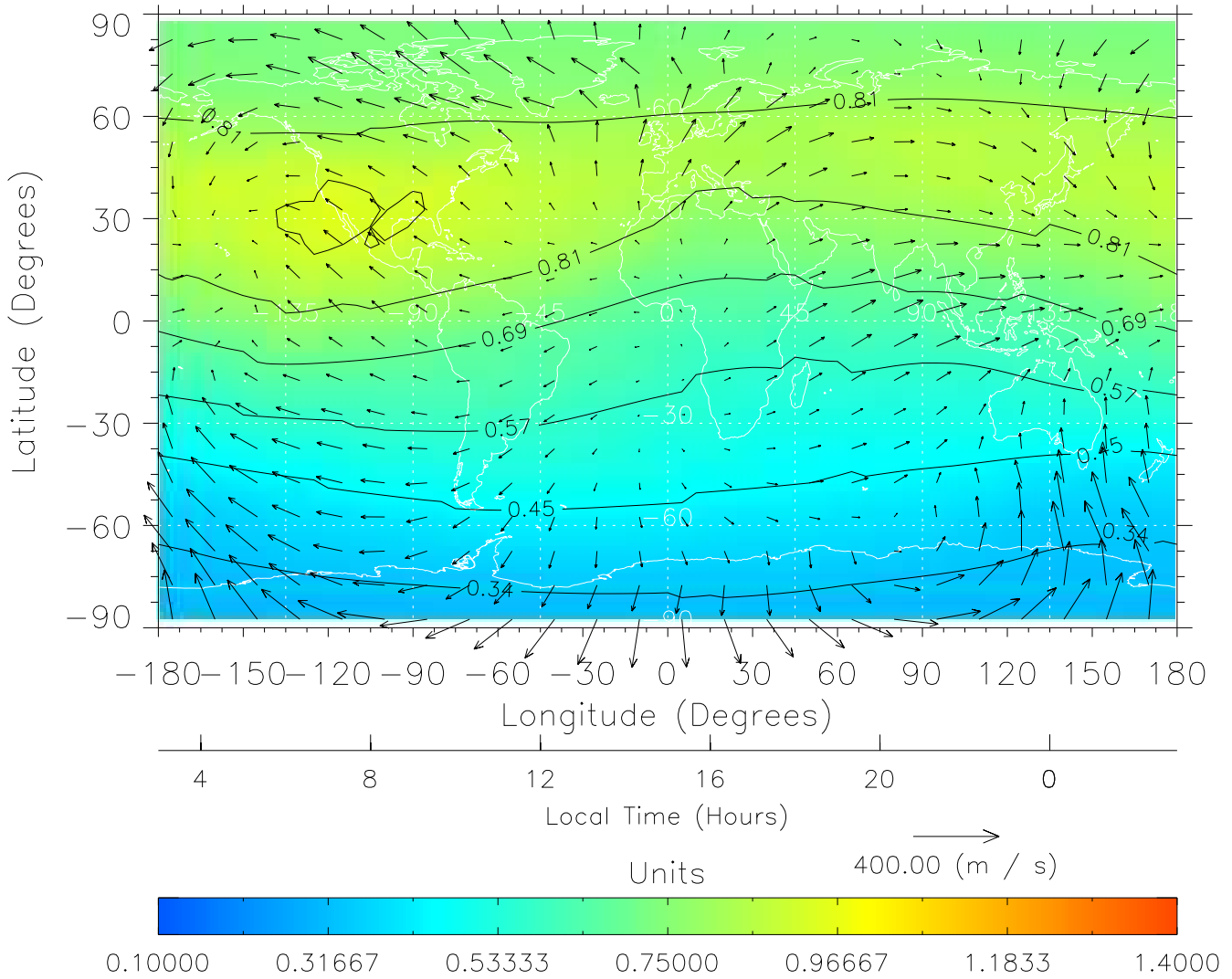
TIME-GCM MAP $\Sigma O/N_2$ with Neutral Wind vectors
ZP = 2.00 UT = 14.00 DOY = 323



Created: Fri Mar 11 14:05:08 2005

From: /tgcm/histories/secondary/November2003/November2003_AMIE_v3_50_65/323.nc

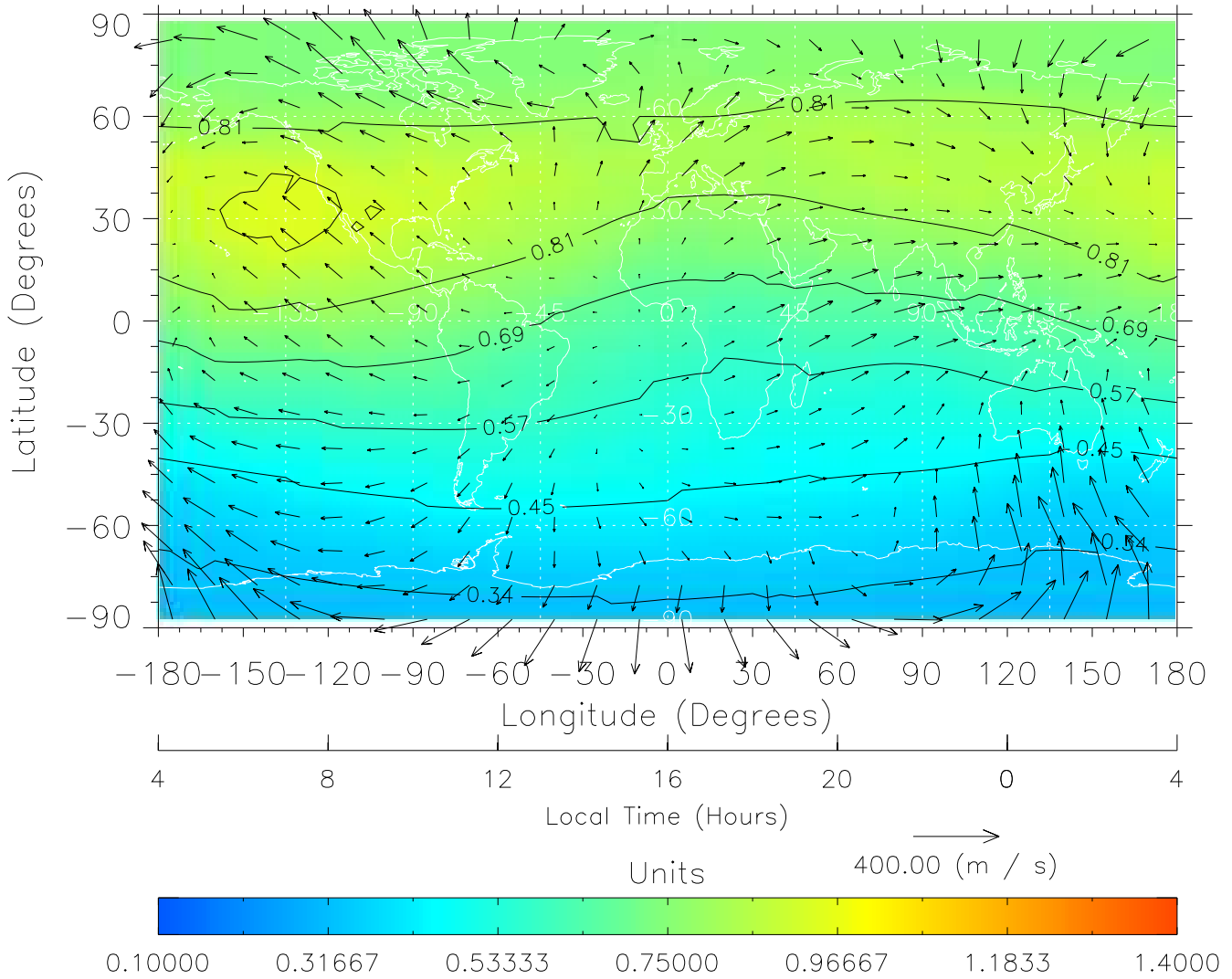
TIME-GCM MAP $\Sigma O/N_2$ with Neutral Wind vectors
ZP = 2.00 UT = 15.00 DOY = 323



Created: Fri Mar 11 14:05:09 2005

From: /tgcm/histories/secondary/November2003/November2003_AMIE_v3_50_65/323.nc

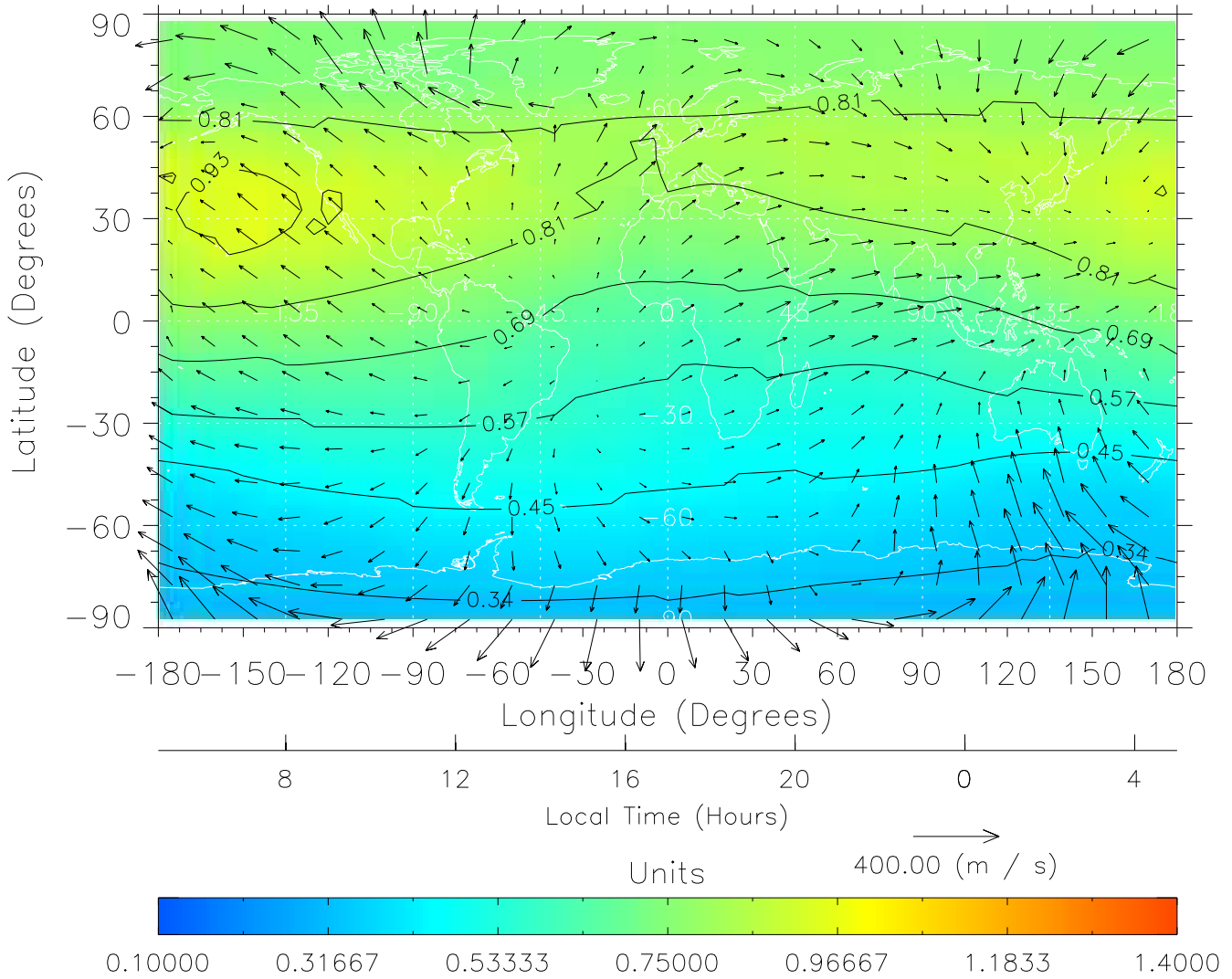
TIME-GCM MAP $\Sigma O/N_2$ with Neutral Wind vectors
ZP = 2.00 UT = 16.00 DOY = 323



Created: Fri Mar 11 14:05:09 2005

From: /tgcm/histories/secondary/November2003/November2003_AMIE_v3_50_65/323.nc

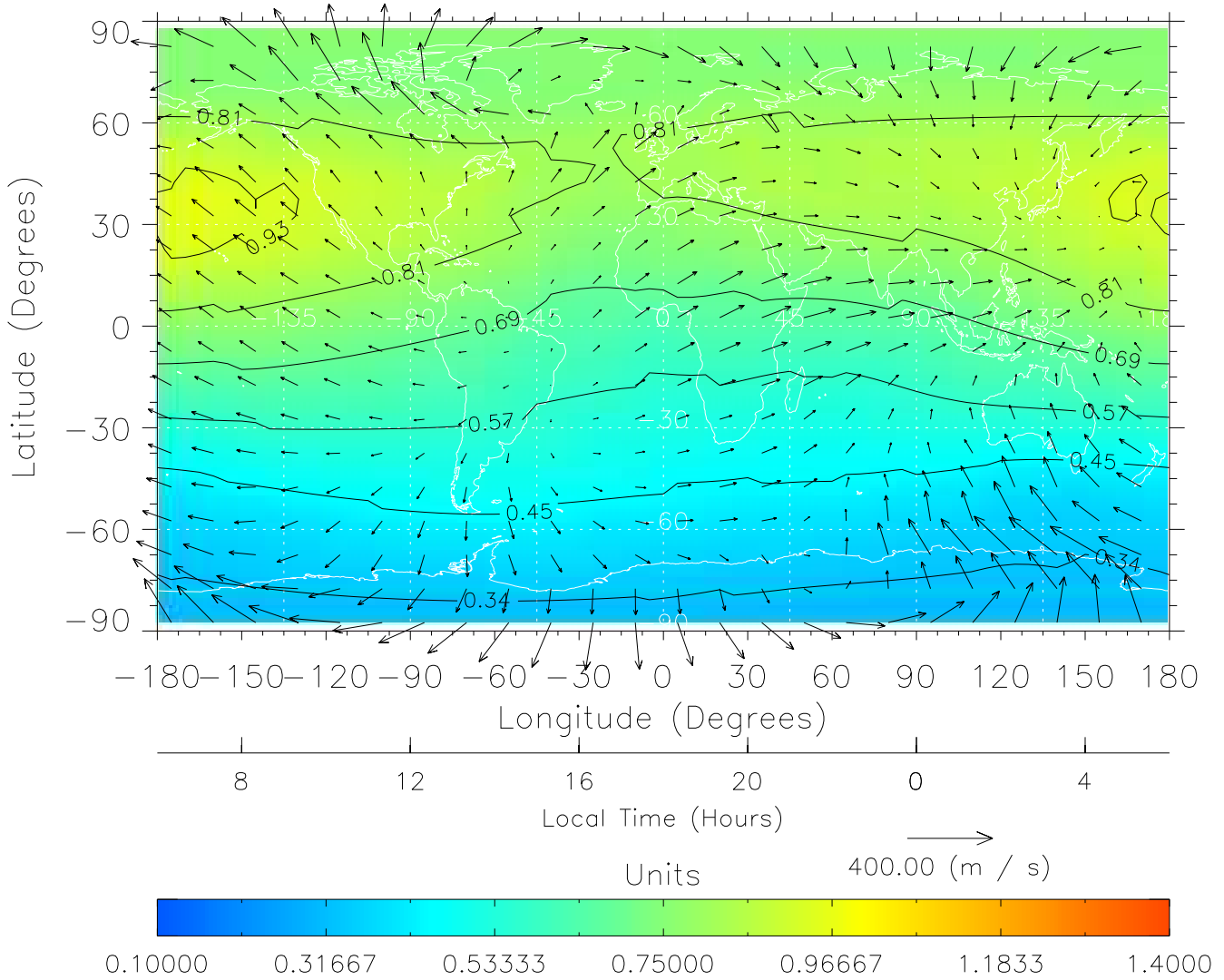
TIME-GCM MAP $\Sigma O/N_2$ with Neutral Wind vectors
ZP = 2.00 UT = 17.00 DOY = 323



Created: Fri Mar 11 14:05:10 2005

From: /tgcm/histories/secondary/November2003/November2003_AMIE_v3_50_65/323.nc

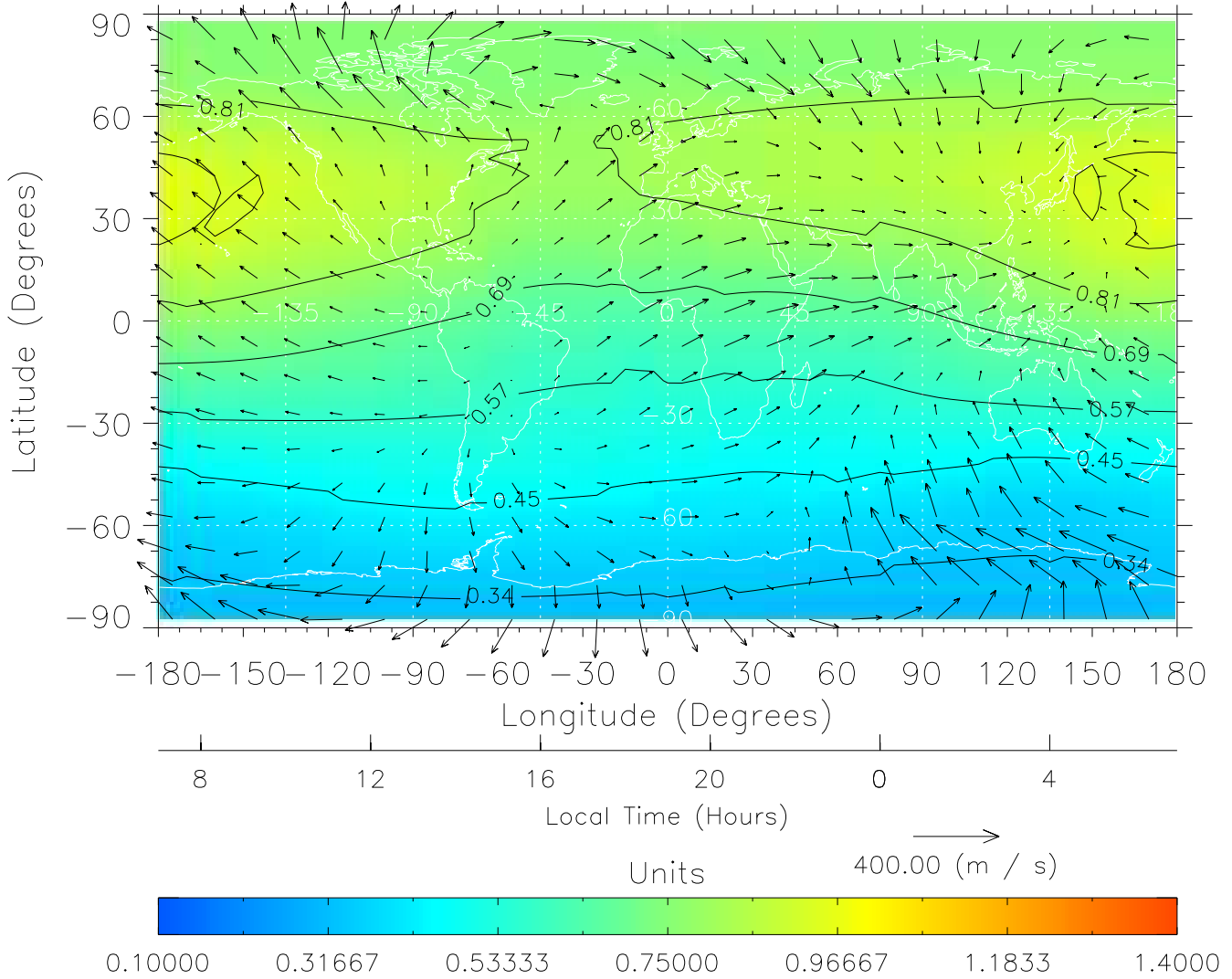
TIME-GCM MAP $\Sigma O/N_2$ with Neutral Wind vectors
ZP = 2.00 UT = 18.00 DOY = 323



Created: Fri Mar 11 14:05:10 2005

From: /tgcm/histories/secondary/November2003/November2003_AMIE_v3_50_65/323.nc

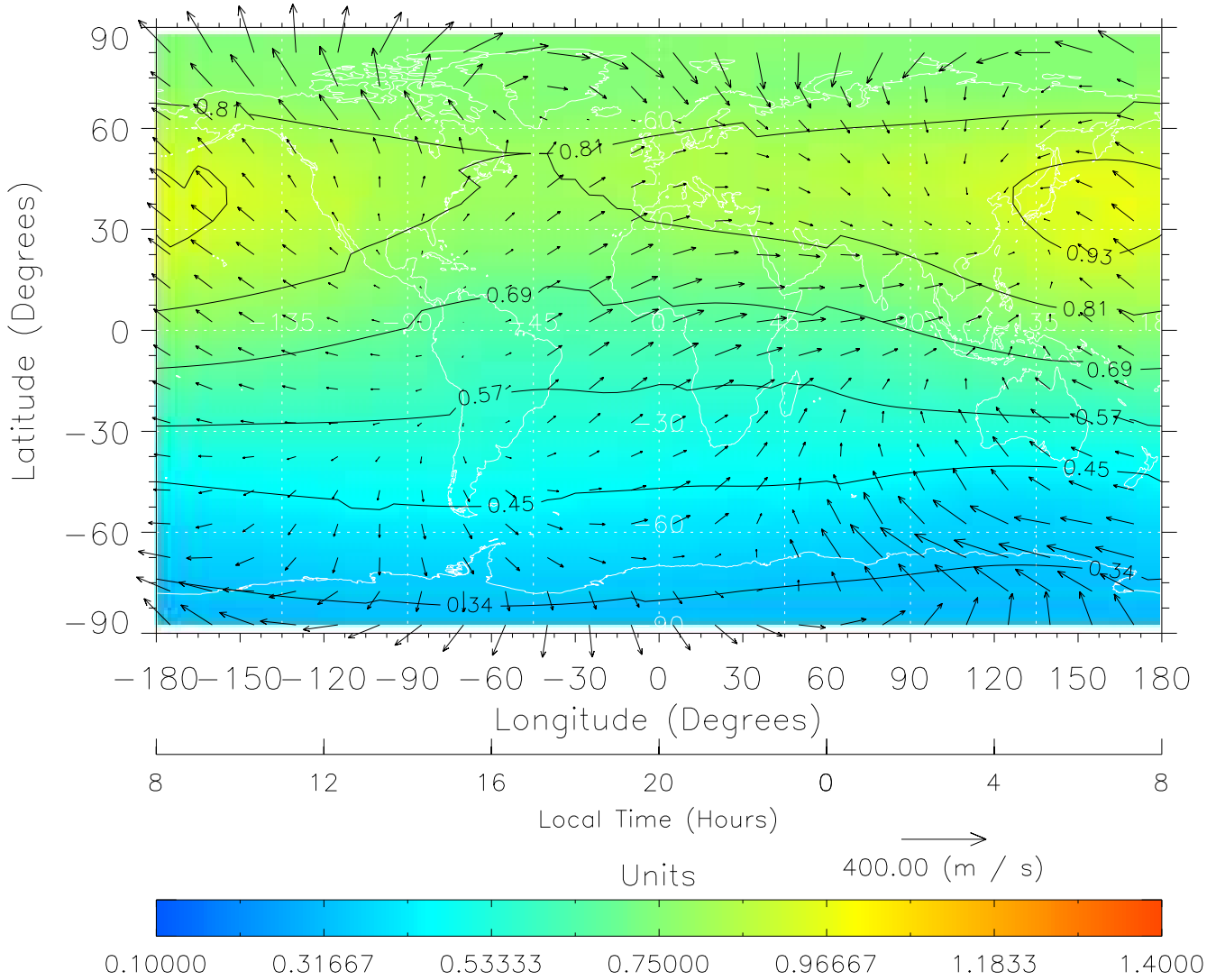
TIME-GCM MAP $\Sigma O/N_2$ with Neutral Wind vectors
ZP = 2.00 UT = 19.00 DOY = 323



Created: Fri Mar 11 14:05:11 2005

From: /tgcm/histories/secondary/November2003/November2003_AMIE_v3_50_65/323.nc

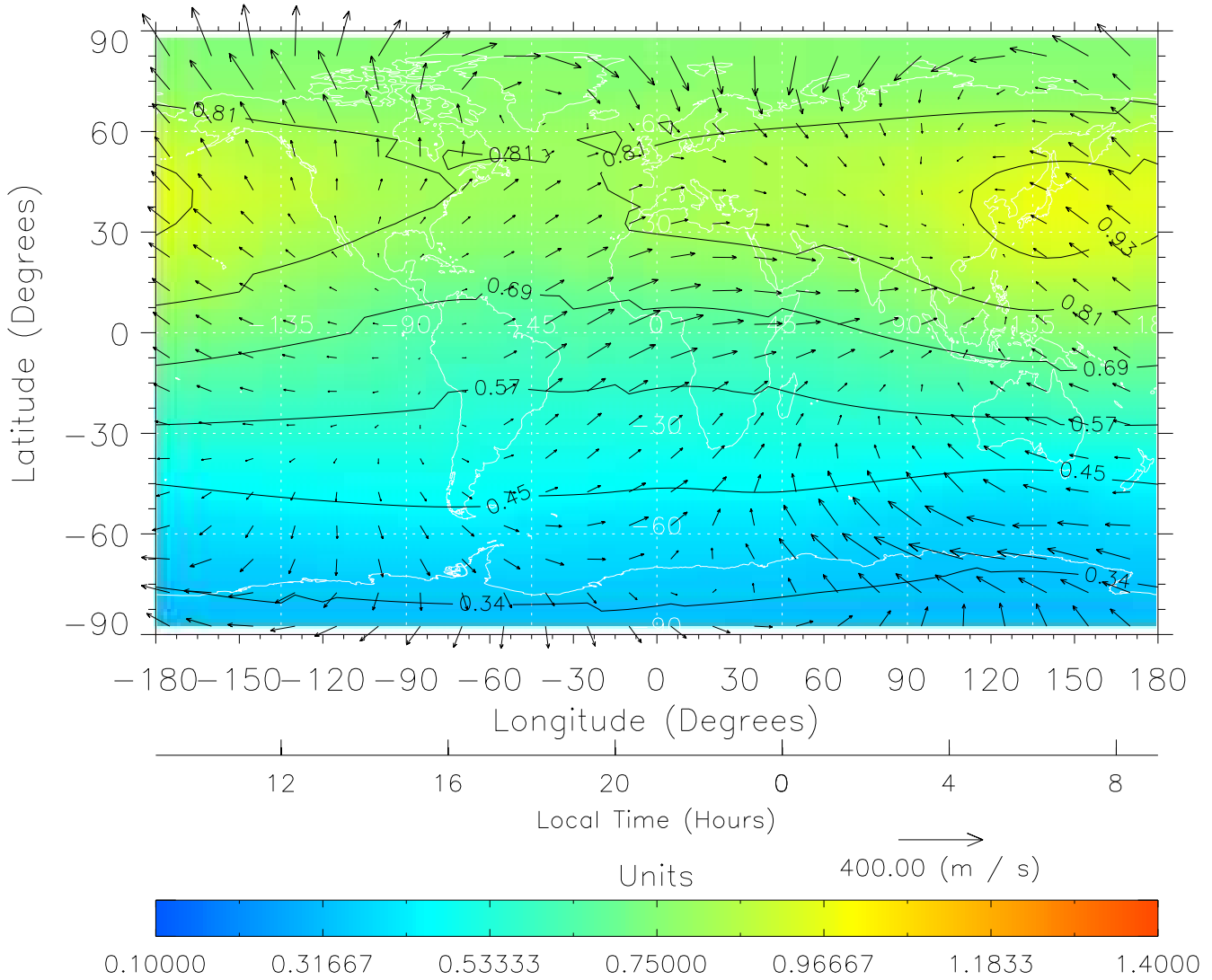
TIME-GCM MAP $\Sigma O/N_2$ with Neutral Wind vectors
ZP = 2.00 UT = 20.00 DOY = 323



Created: Fri Mar 11 14:05:11 2005

From: /tgcm/histories/secondary/November2003/November2003_AMIE_v3_50_65/323.nc

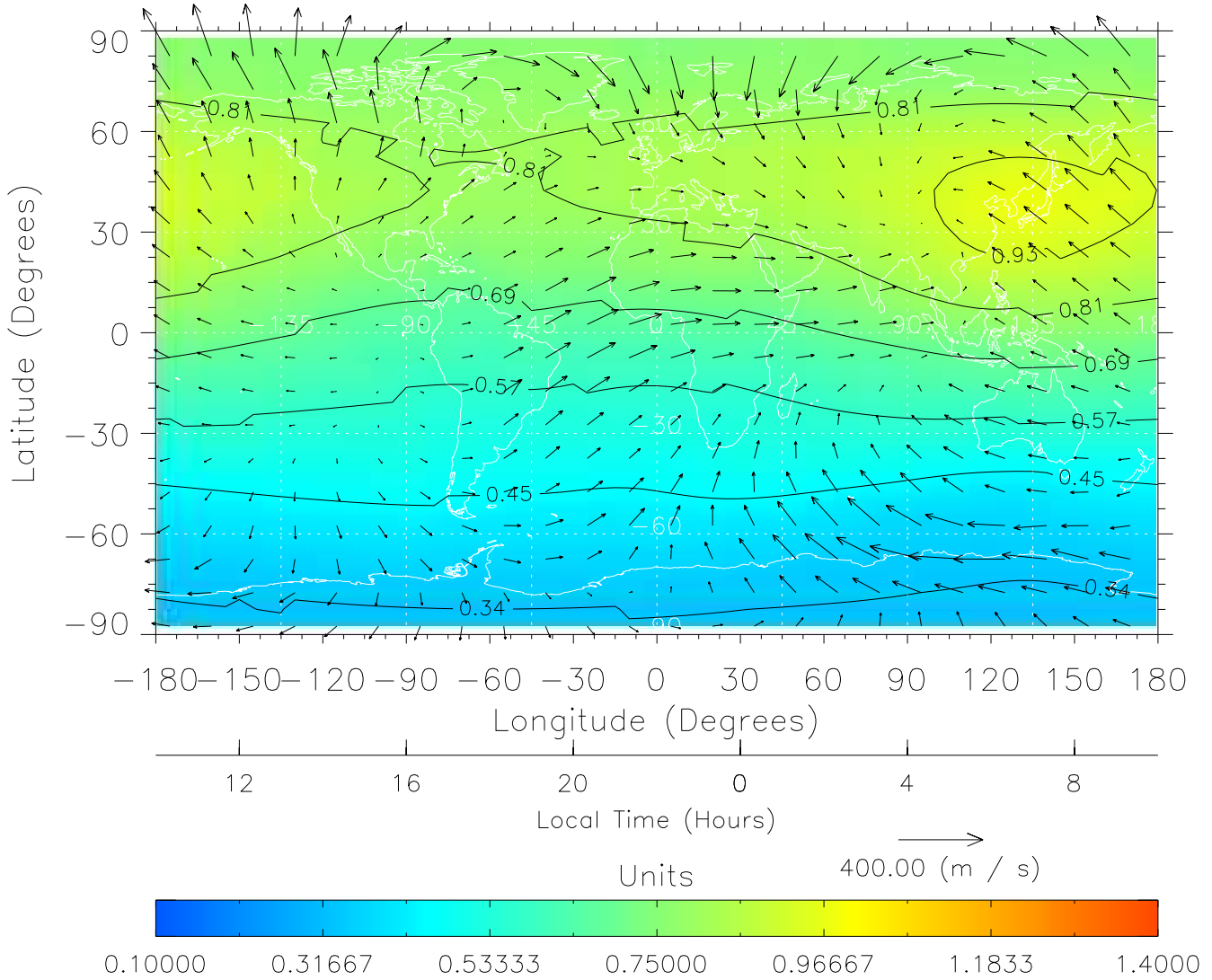
TIME-GCM MAP $\Sigma O/N_2$ with Neutral Wind vectors
ZP = 2.00 UT = 21.00 DOY = 323



Created: Fri Mar 11 14:05:11 2005

From: /tgcm/histories/secondary/November2003/November2003_AMIE_v3_50_65/323.nc

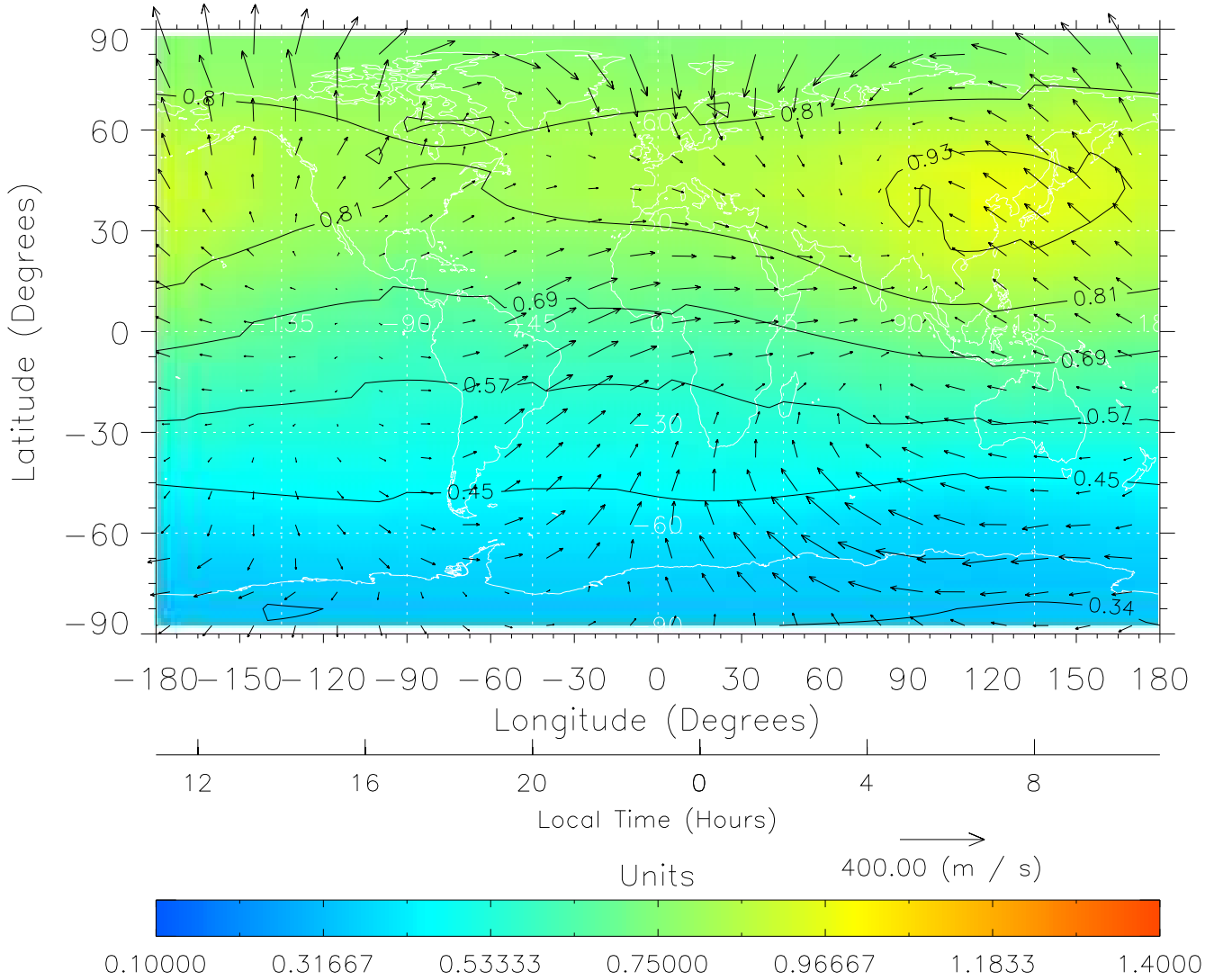
TIME-GCM MAP $\Sigma O/N_2$ with Neutral Wind vectors
ZP = 2.00 UT = 22.00 DOY = 323



Created: Fri Mar 11 14:05:12 2005

From: /tgcm/histories/secondary/November2003/November2003_AMIE_v3_50_65/323.nc

TIME-GCM MAP $\Sigma O/N_2$ with Neutral Wind vectors
ZP = 2.00 UT = 23.00 DOY = 323



Created: Fri Mar 11 14:05:12 2005

From: /tgcm/histories/secondary/November2003/November2003_AMIE_v3_50_65/323.nc