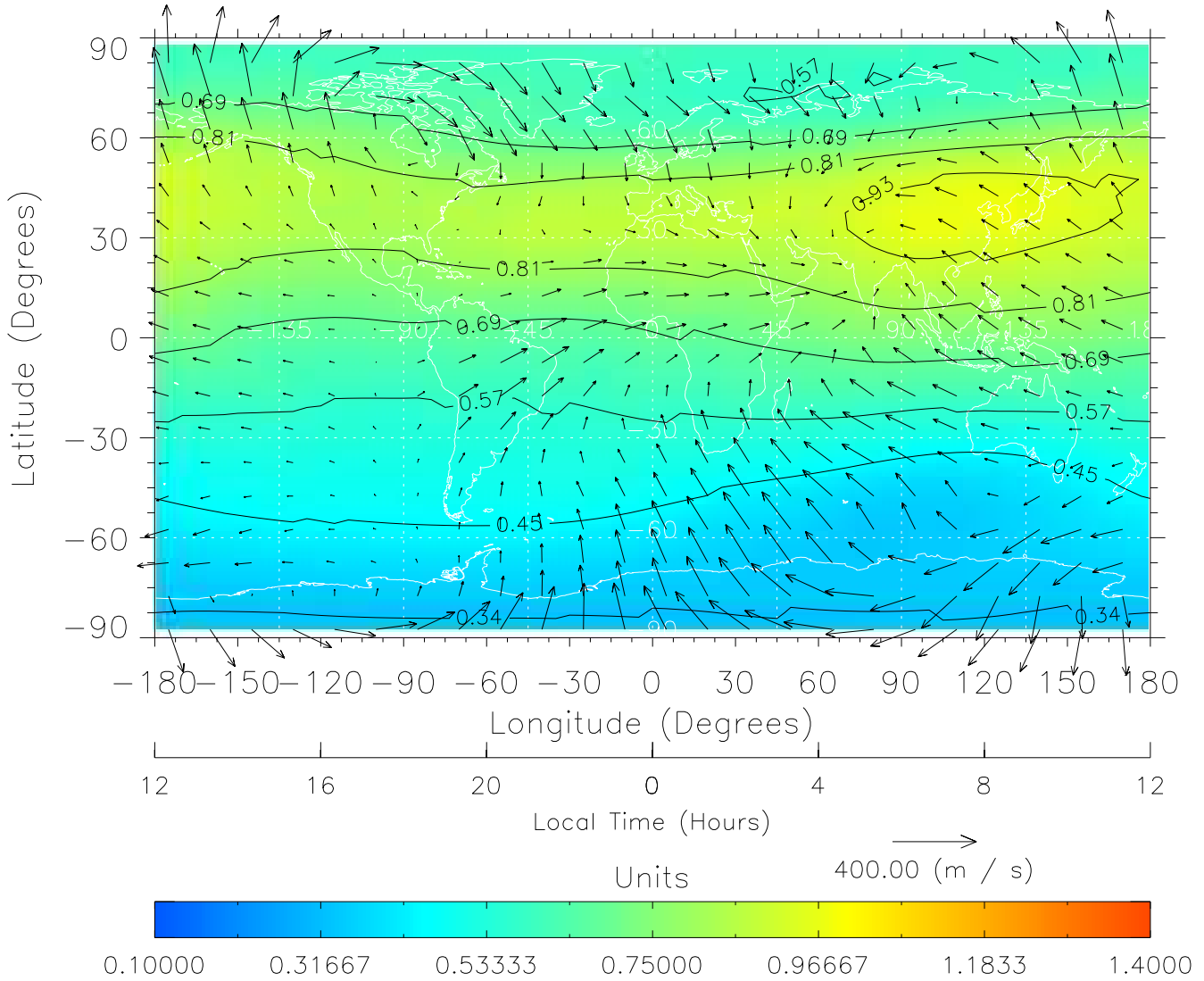


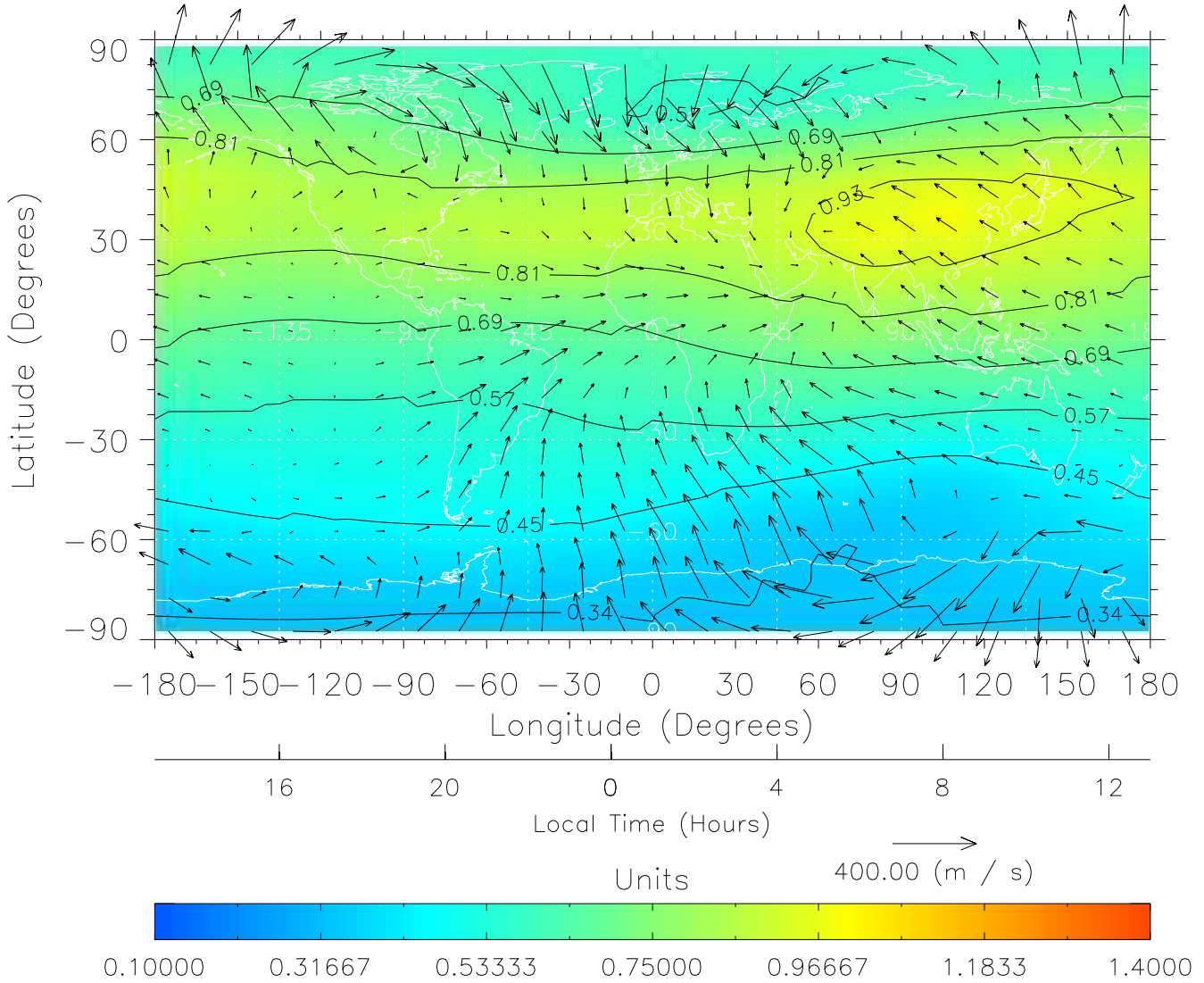
TIME-GCM MAP  $\Sigma O/N_2$  with Neutral Wind vectors  
ZP = 2.00 UT = 0.00 DOY = 322



Created: Fri Mar 11 14:02:57 2005

From: /tgcm/histories/secondary/November2003/November2003\_AMIE\_v3\_50\_65/322.nc

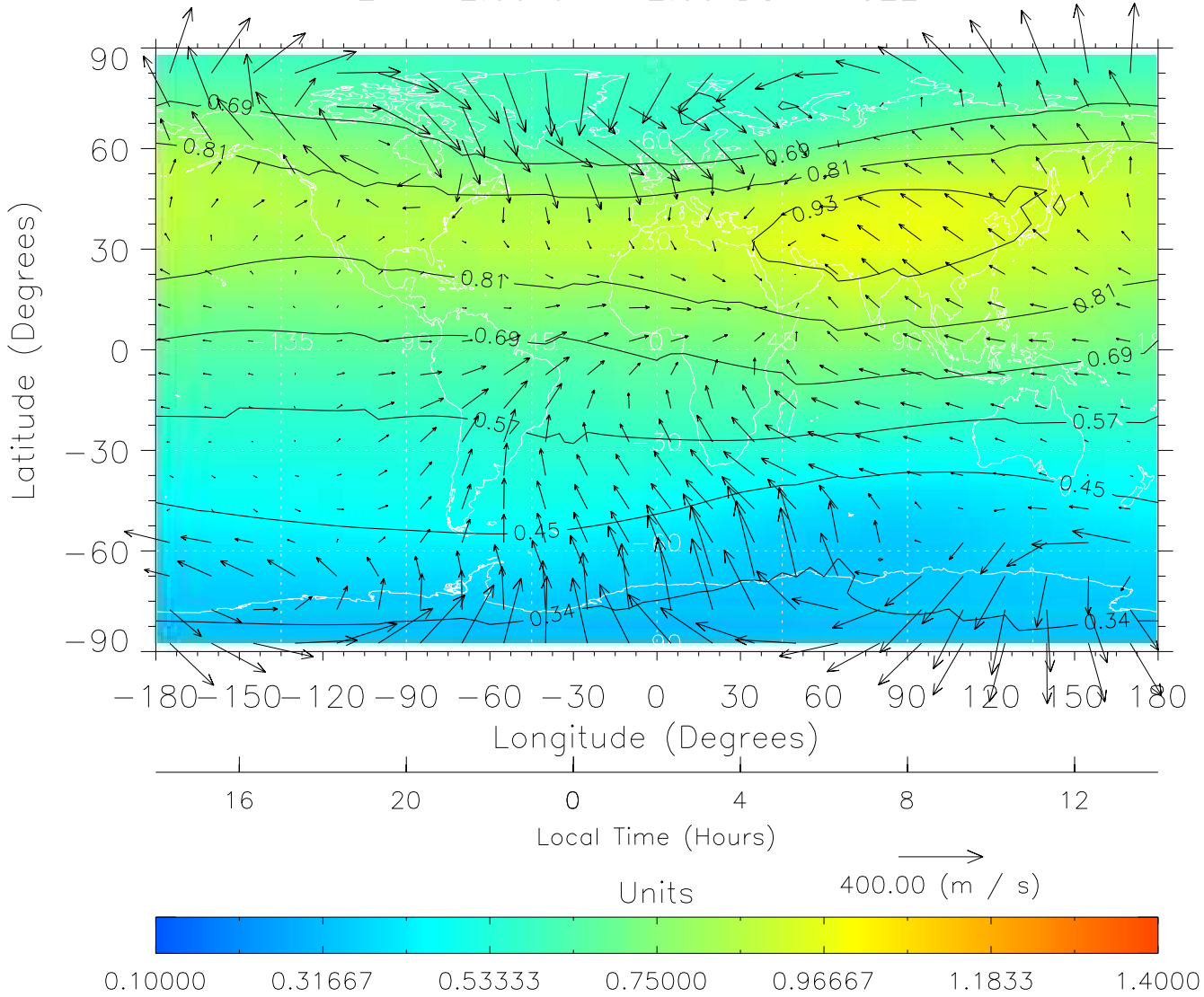
TIME-GCM MAP  $\Sigma O/N_2$  with Neutral Wind vectors  
ZP = 2.00 UT = 1.00 DOY = 322



Created: Fri Mar 11 14:02:57 2005

From: /tgcm/histories/secondary/November2003/November2003\_AMIE\_v3\_50\_65/322.nc

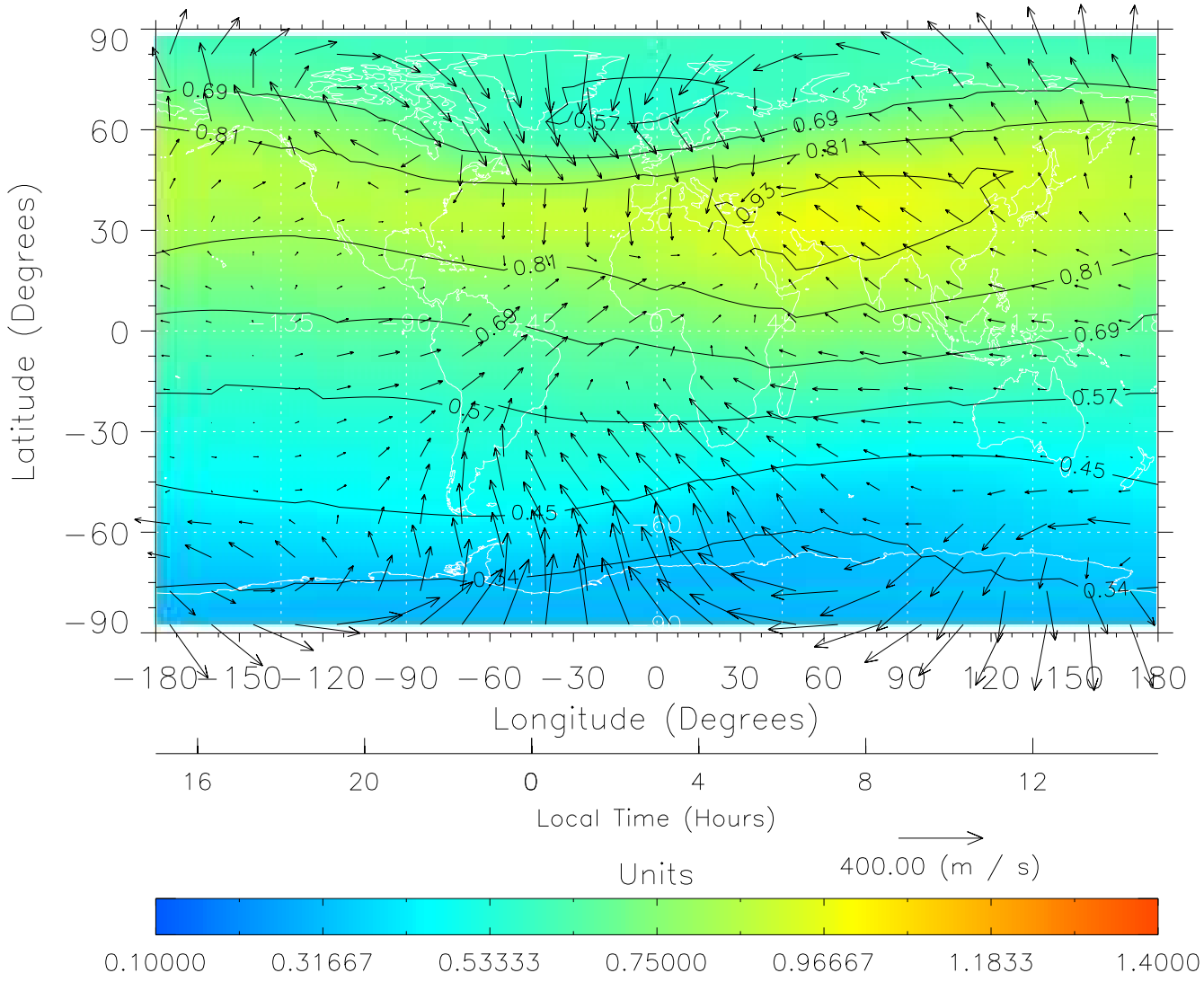
TIME-GCM MAP  $\Sigma O/N_2$  with Neutral Wind vectors  
ZP = 2.00 UT = 2.00 DOY = 322



Created: Fri Mar 11 14:02:58 2005

From: /tgcm/histories/secondary/November2003/November2003\_AMIE\_v3\_50\_65/322.nc

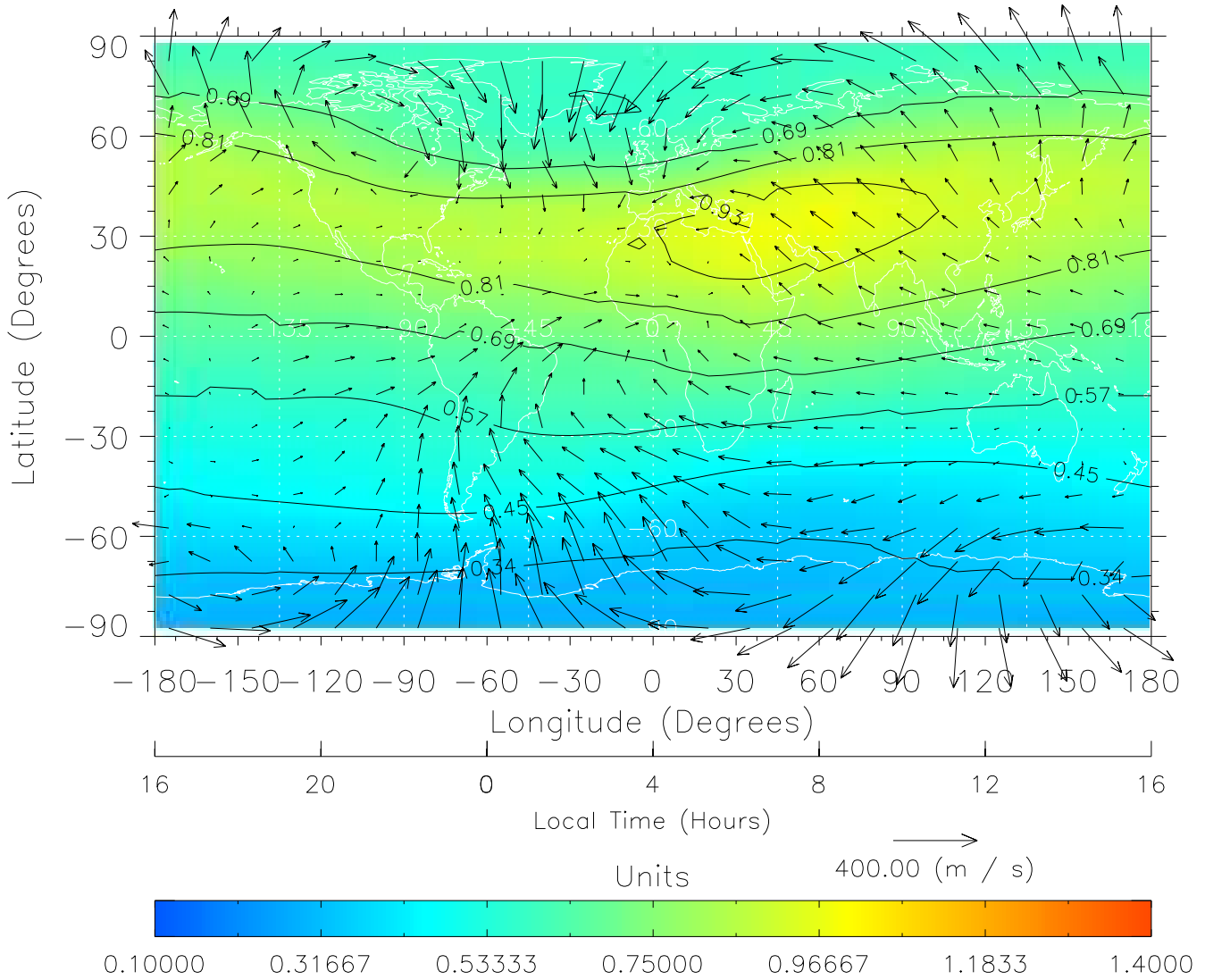
TIME-GCM MAP  $\Sigma O/N_2$  with Neutral Wind vectors  
ZP = 2.00 UT = 3.00 DOY = 322



Created: Fri Mar 11 14:02:58 2005

From: /tgcm/histories/secondary/November2003/November2003\_AMIE\_v3\_50\_65/322.nc

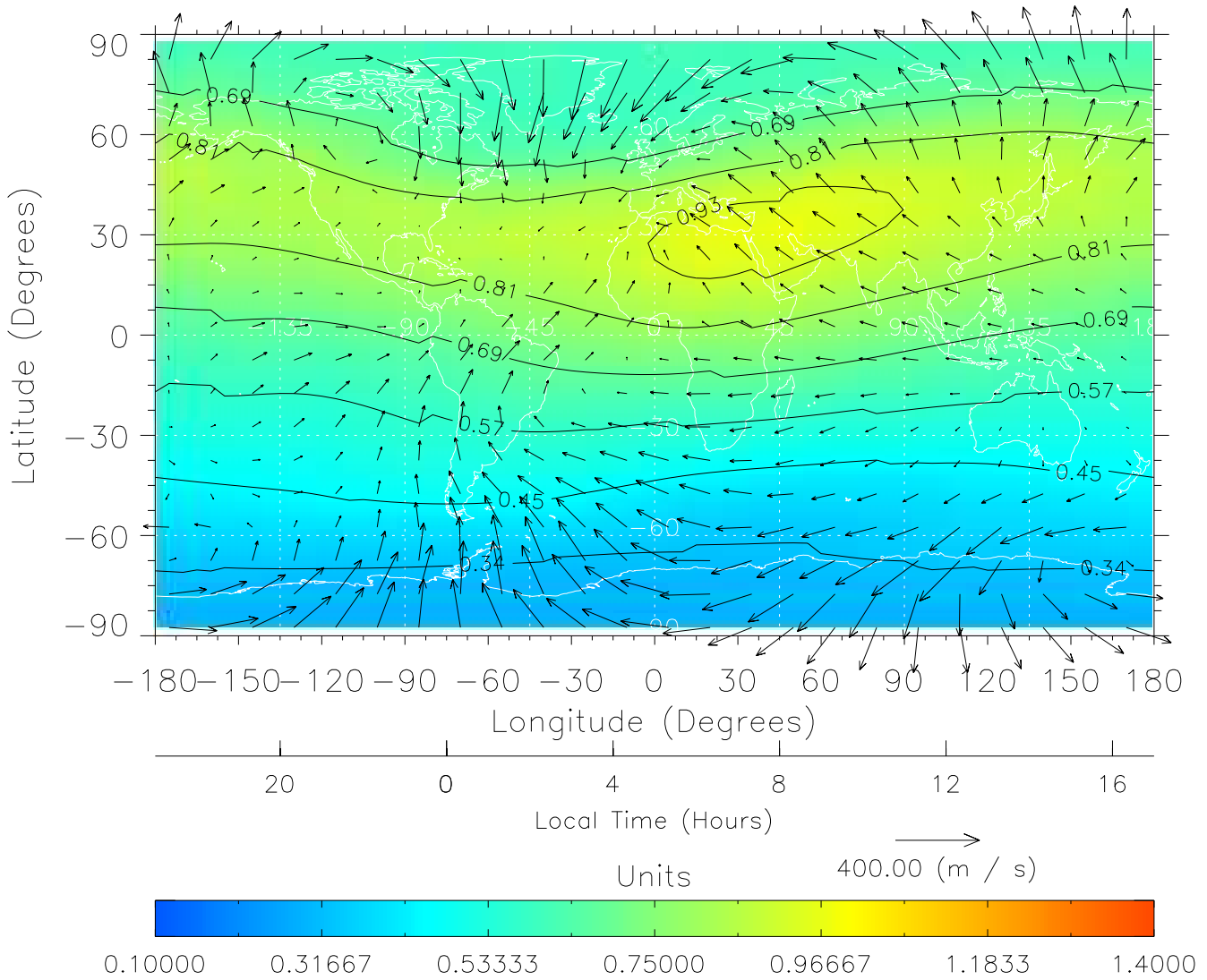
TIME-GCM MAP  $\Sigma O/N_2$  with Neutral Wind vectors  
ZP = 2.00 UT = 4.00 DOY = 322



Created: Fri Mar 11 14:02:59 2005

From: /tgcm/histories/secondary/November2003/November2003\_AMIE\_v3\_50\_65/322.nc

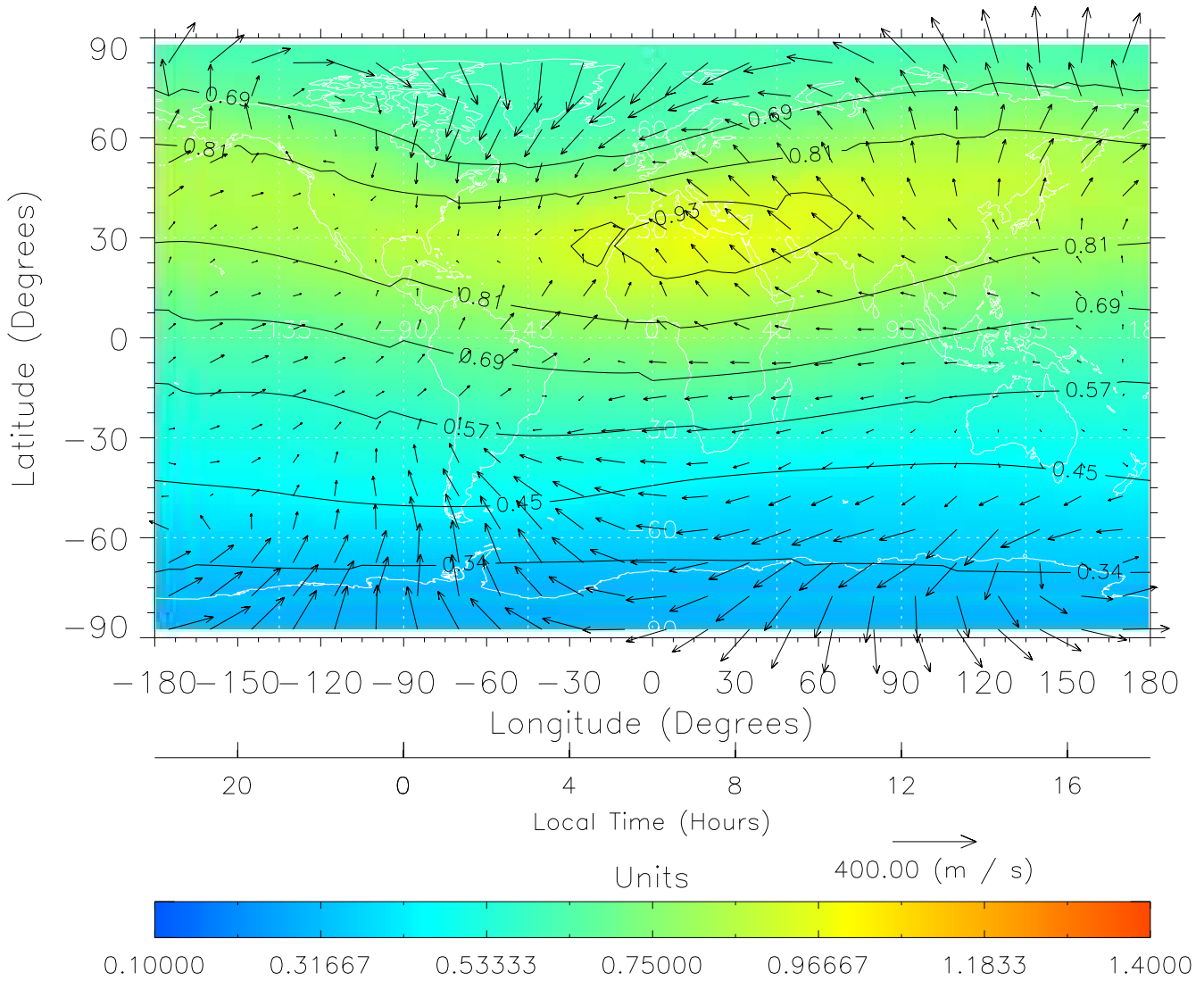
TIME-GCM MAP  $\Sigma O/N_2$  with Neutral Wind vectors  
ZP = 2.00 UT = 5.00 DOY = 322



Created: Fri Mar 11 14:02:59 2005

From: /tgcm/histories/secondary/November2003/November2003\_AMIE\_v3\_50\_65/322.nc

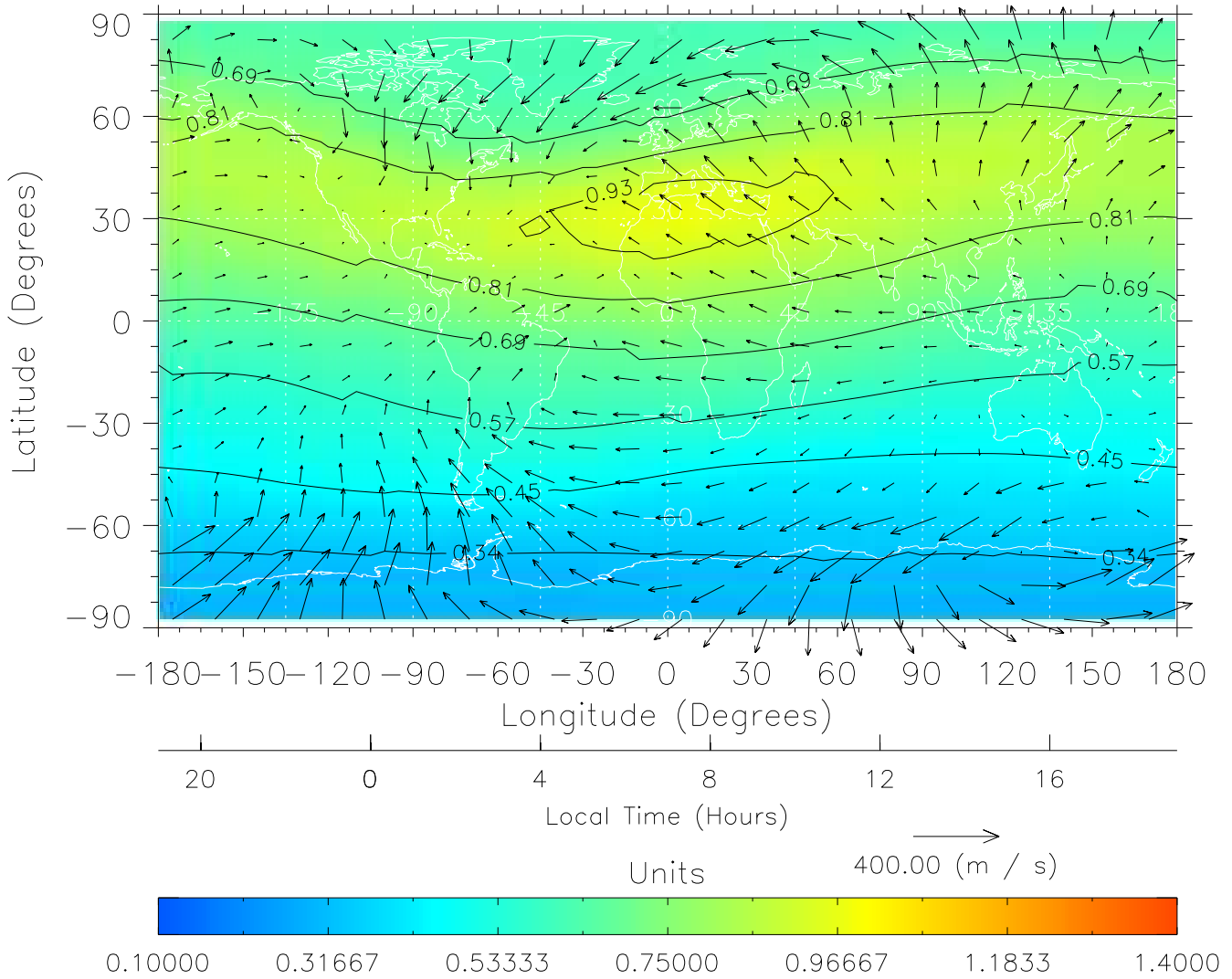
TIME-GCM MAP  $\Sigma O/N_2$  with Neutral Wind vectors  
ZP = 2.00 UT = 6.00 DOY = 322



Created: Fri Mar 11 14:03:00 2005

From: /tgcm/histories/secondary/November2003/November2003\_AMIE\_v3\_50\_65/322.nc

TIME-GCM MAP  $\Sigma O/N_2$  with Neutral Wind vectors  
ZP = 2.00 UT = 7.00 DOY = 322

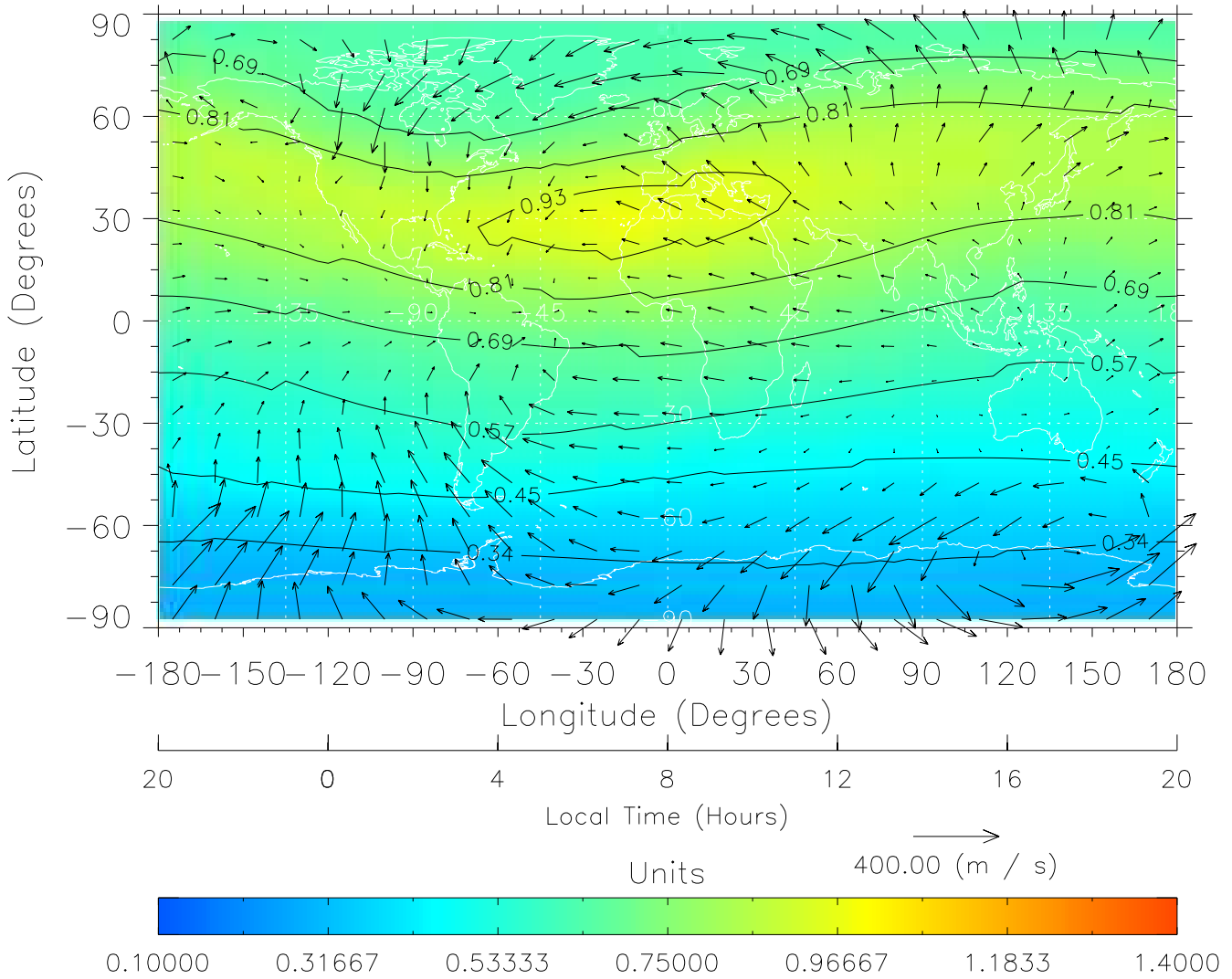


Created: Fri Mar 11 14:03:00 2005

From: /tgcm/histories/secondary/November2003/November2003\_AMIE\_v3\_50\_65/322.nc



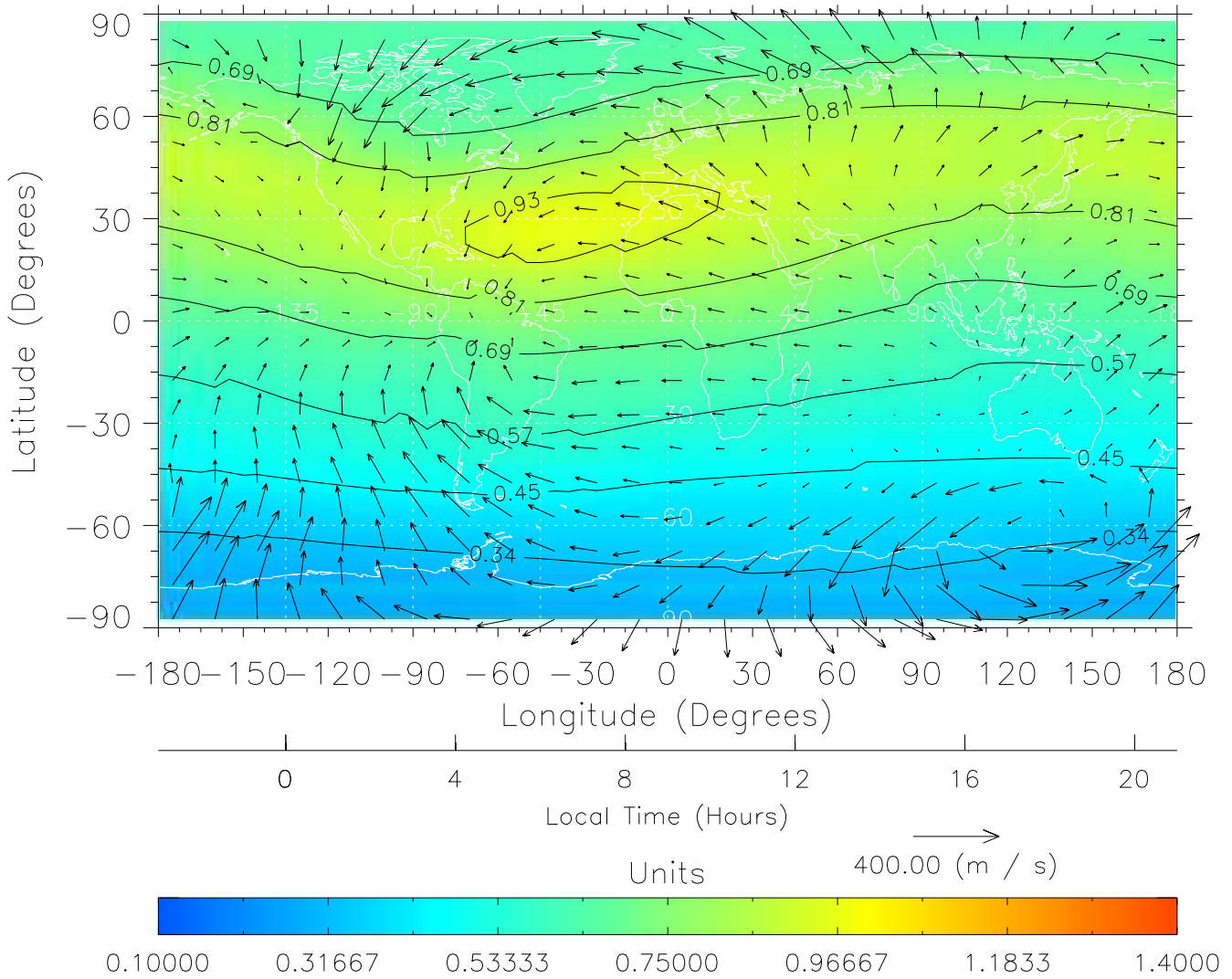
TIME-GCM MAP  $\Sigma O/N_2$  with Neutral Wind vectors  
ZP = 2.00 UT = 8.00 DOY = 322



Created: Fri Mar 11 14:03:01 2005

From: /tgcm/histories/secondary/November2003/November2003\_AMIE\_v3\_50\_65/322.nc

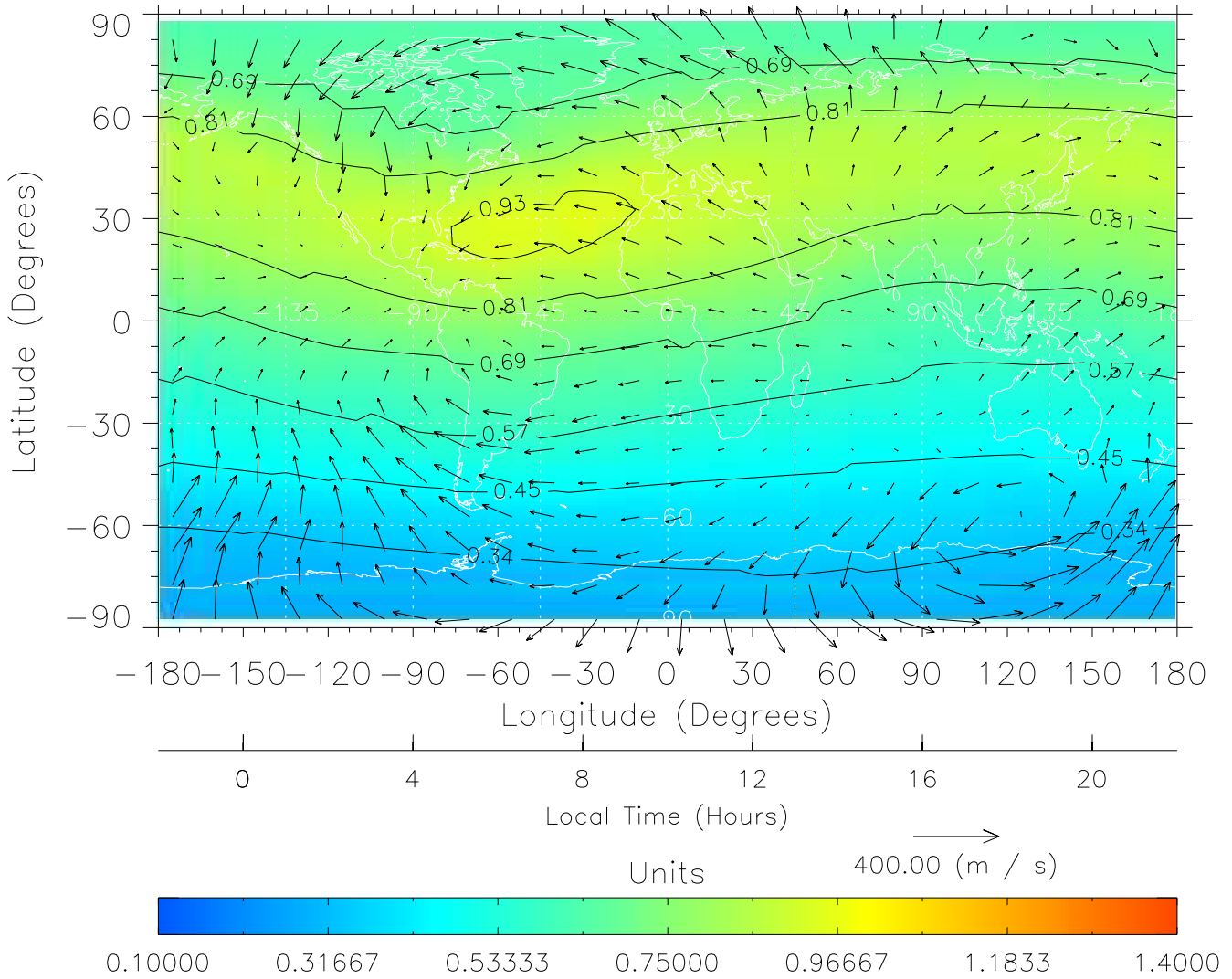
TIME-GCM MAP  $\Sigma O/N_2$  with Neutral Wind vectors  
ZP = 2.00 UT = 9.00 DOY = 322



Created: Fri Mar 11 14:03:01 2005

From: /tgcm/histories/secondary/November2003/November2003\_AMIE\_v3\_50\_65/322.nc

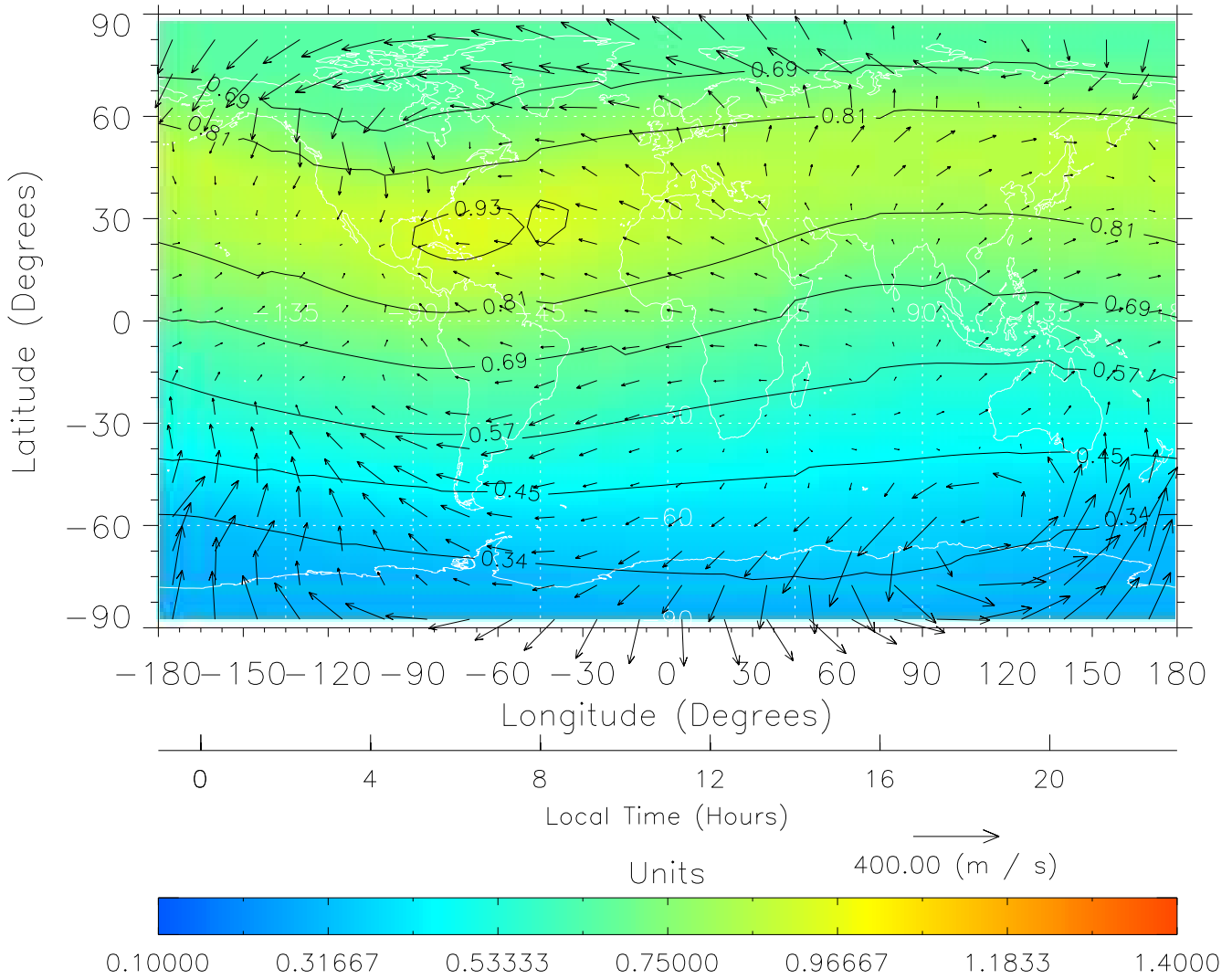
TIME-GCM MAP  $\Sigma O/N_2$  with Neutral Wind vectors  
ZP = 2.00 UT = 10.00 DOY = 322



Created: Fri Mar 11 14:03:02 2005

From: /tgcm/histories/secondary/November2003/November2003\_AMIE\_v3\_50\_65/322.nc

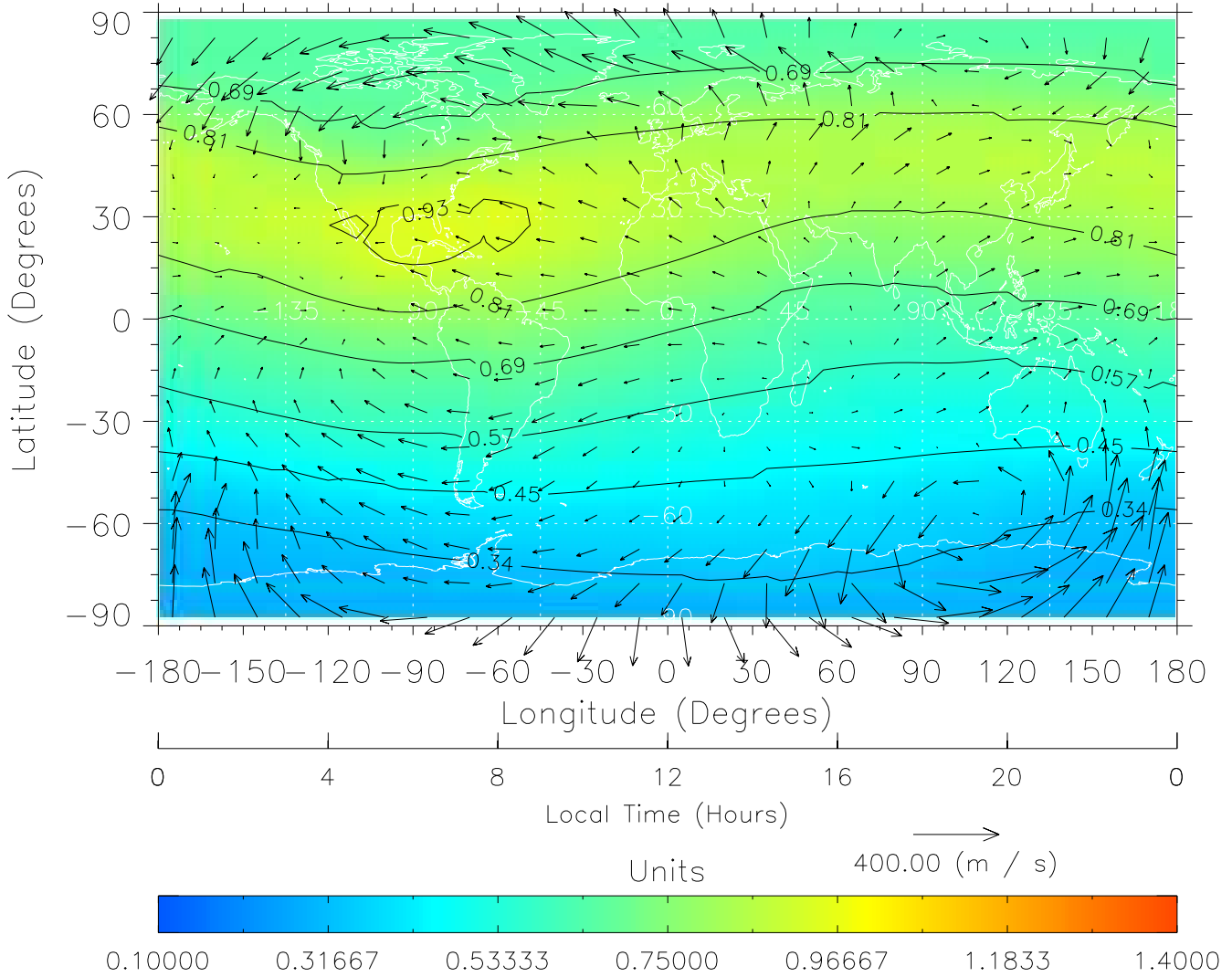
TIME-GCM MAP  $\Sigma O/N_2$  with Neutral Wind vectors  
ZP = 2.00 UT = 11.00 DOY = 322



Created: Fri Mar 11 14:03:02 2005

From: /tgcm/histories/secondary/November2003/November2003\_AMIE\_v3\_50\_65/322.nc

TIME-GCM MAP  $\Sigma O/N_2$  with Neutral Wind vectors  
ZP = 2.00 UT = 12.00 DOY = 322

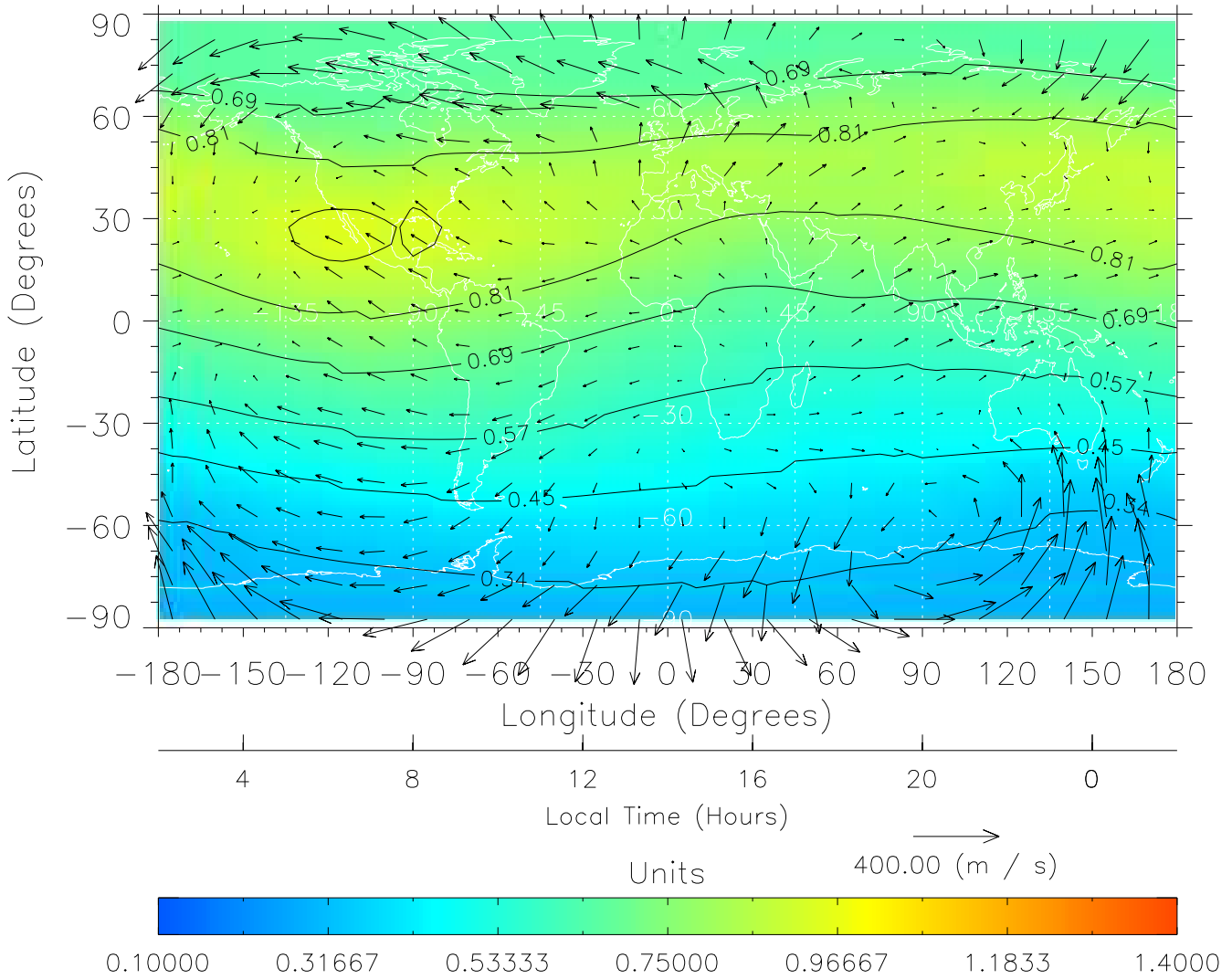


Created: Fri Mar 11 14:03:02 2005

From: /tgcm/histories/secondary/November2003/November2003\_AMIE\_v3\_50\_65/322.nc



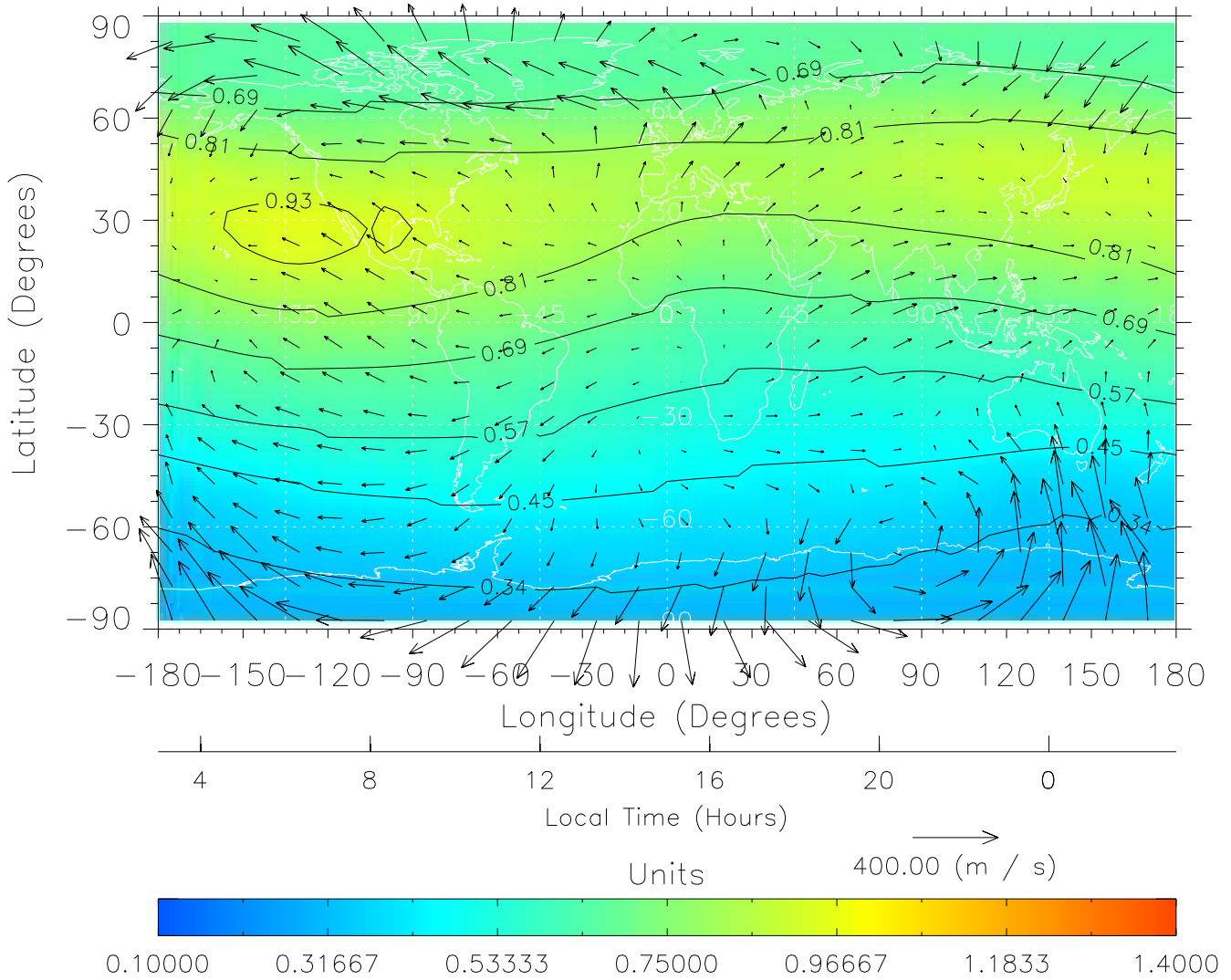
TIME-GCM MAP  $\Sigma O/N_2$  with Neutral Wind vectors  
ZP = 2.00 UT = 14.00 DOY = 322



Created: Fri Mar 11 14:03:03 2005

From: /tgcm/histories/secondary/November2003/November2003\_AMIE\_v3\_50\_65/322.nc

TIME-GCM MAP  $\Sigma O/N_2$  with Neutral Wind vectors  
ZP = 2.00 UT = 15.00 DOY = 322

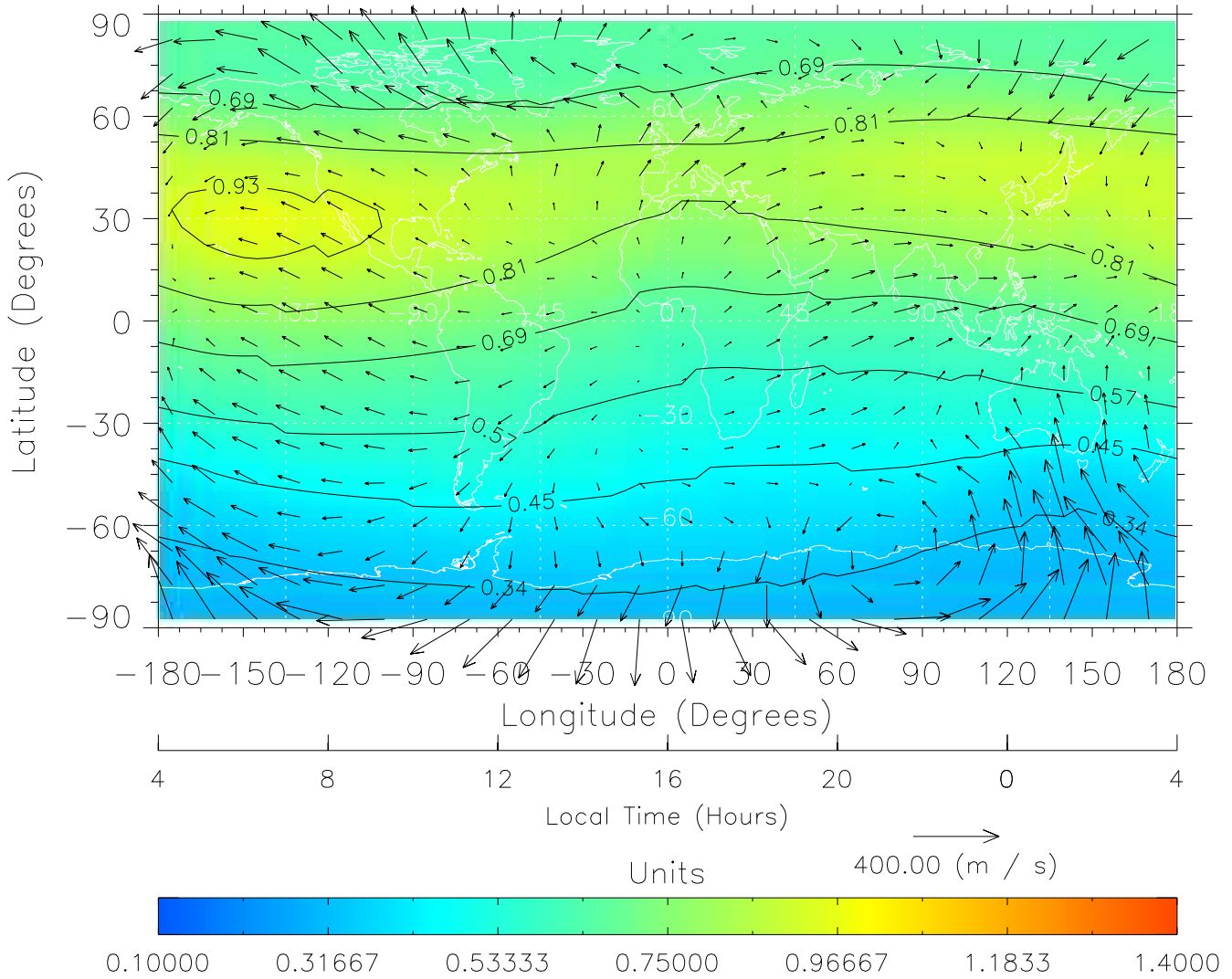


Created: Fri Mar 11 14:03:04 2005

From: /tgcm/histories/secondary/November2003/November2003\_AMIE\_v3\_50\_65/322.nc



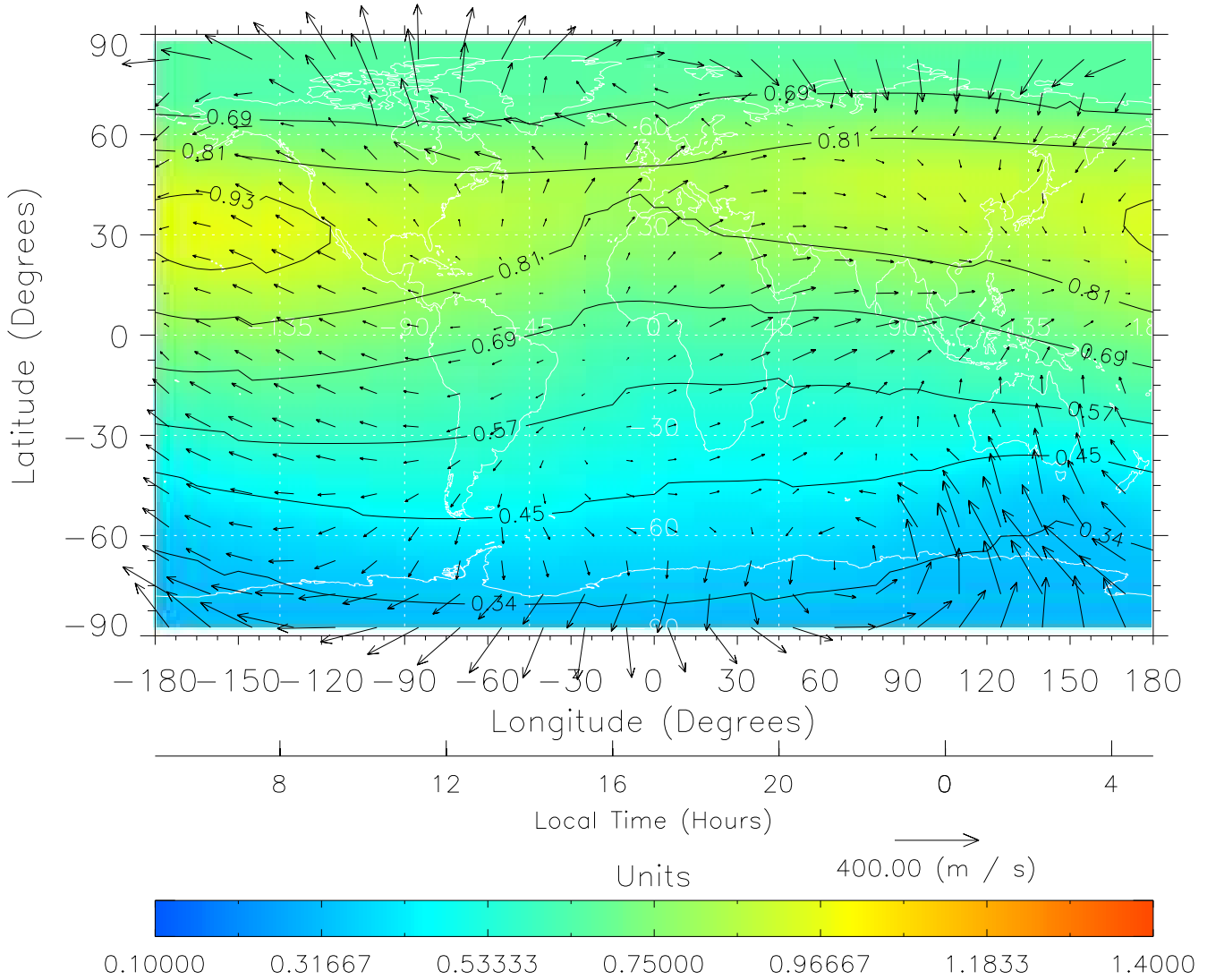
TIME-GCM MAP  $\Sigma O/N_2$  with Neutral Wind vectors  
ZP = 2.00 UT = 16.00 DOY = 322



Created: Fri Mar 11 14:03:04 2005

From: /tgcm/histories/secondary/November2003/November2003\_AMIE\_v3\_50\_65/322.nc

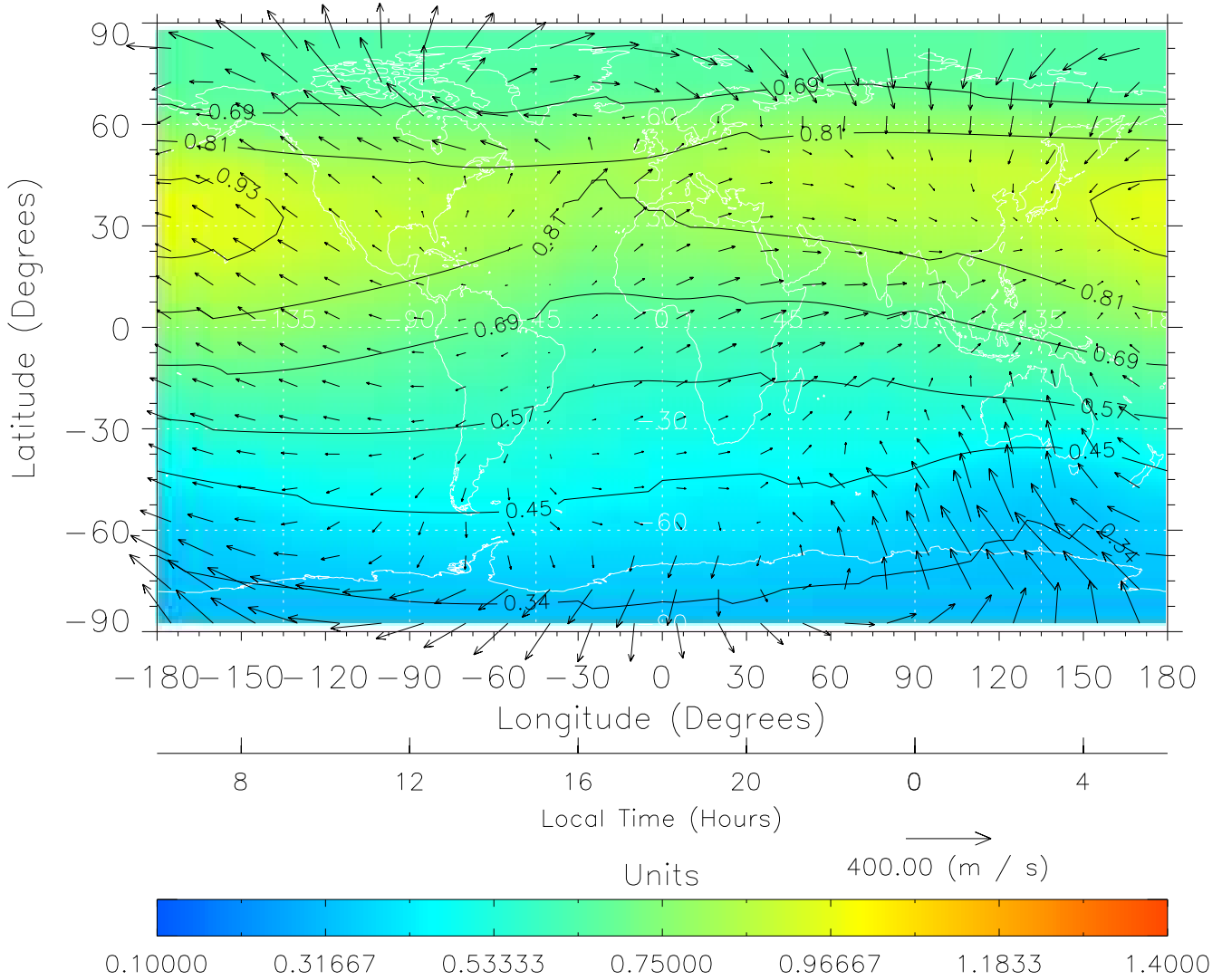
TIME-GCM MAP  $\Sigma O/N_2$  with Neutral Wind vectors  
ZP = 2.00 UT = 17.00 DOY = 322



Created: Fri Mar 11 14:03:05 2005

From: /tgcm/histories/secondary/November2003/November2003\_AMIE\_v3\_50\_65/322.nc

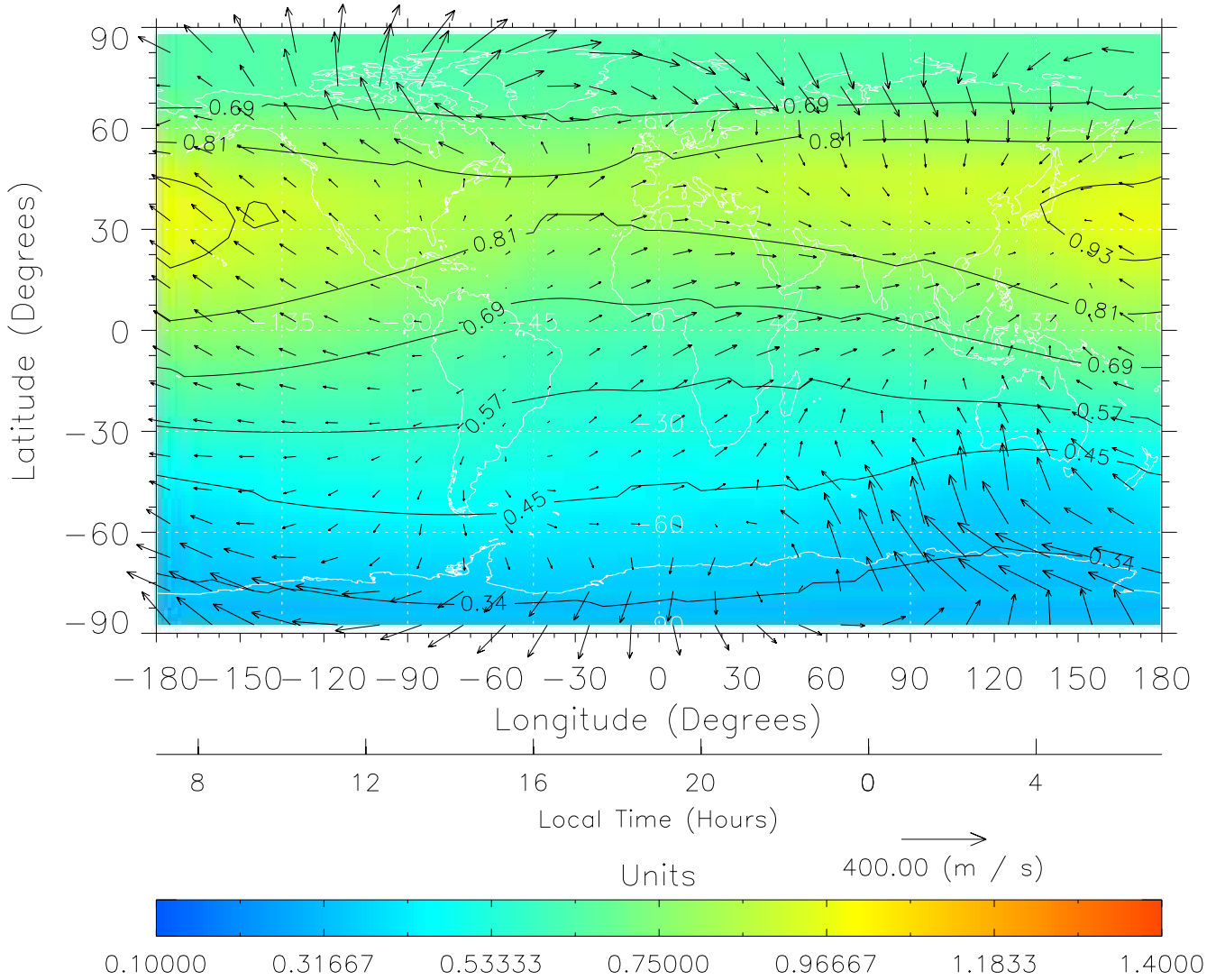
TIME-GCM MAP  $\Sigma O/N_2$  with Neutral Wind vectors  
ZP = 2.00 UT = 18.00 DOY = 322



Created: Fri Mar 11 14:03:05 2005

From: /tgcm/histories/secondary/November2003/November2003\_AMIE\_v3\_50\_65/322.nc

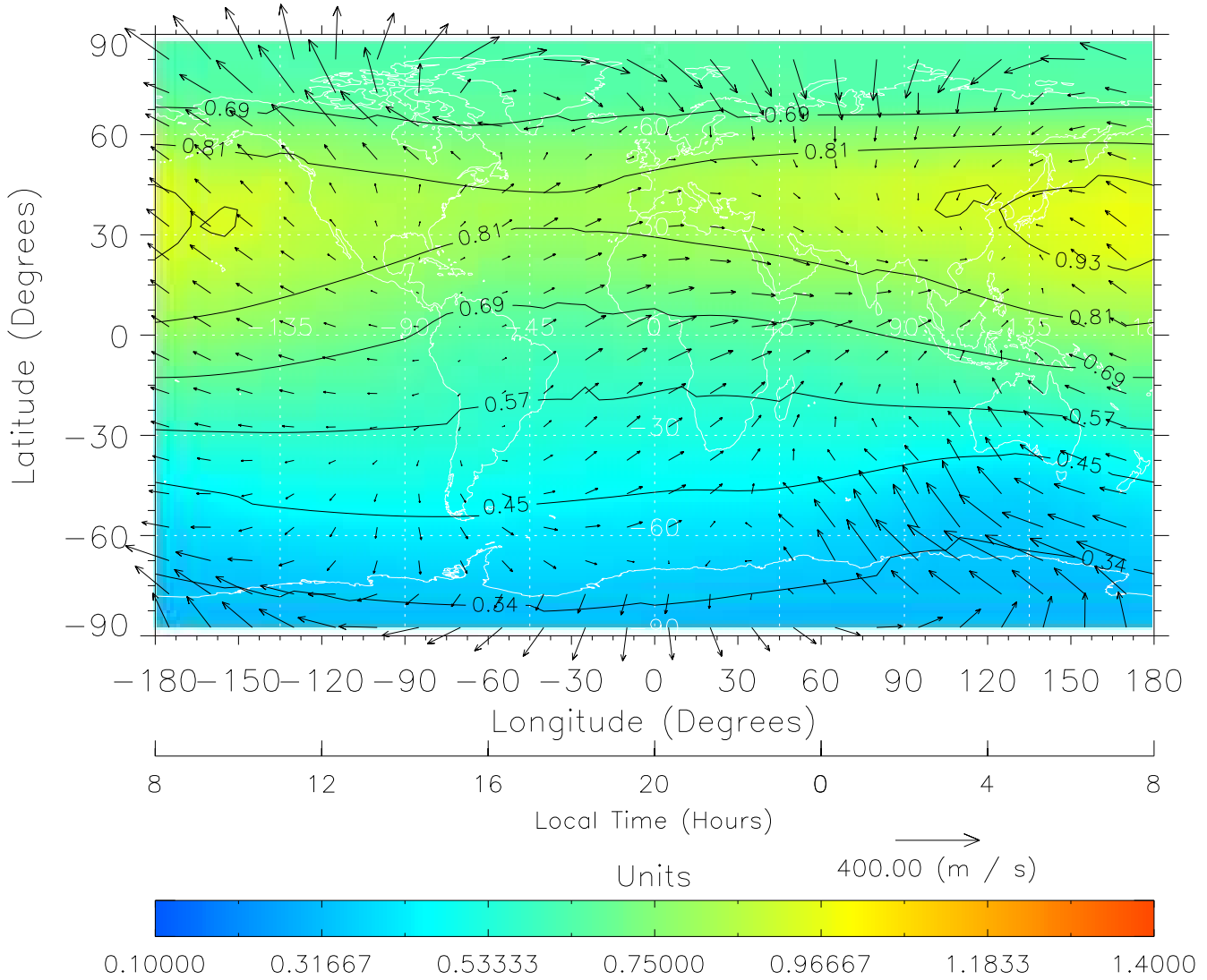
TIME-GCM MAP  $\Sigma O/N_2$  with Neutral Wind vectors  
ZP = 2.00 UT = 19.00 DOY = 322



Created: Fri Mar 11 14:03:06 2005

From: /tgcm/histories/secondary/November2003/November2003\_AMIE\_v3\_50\_65/322.nc

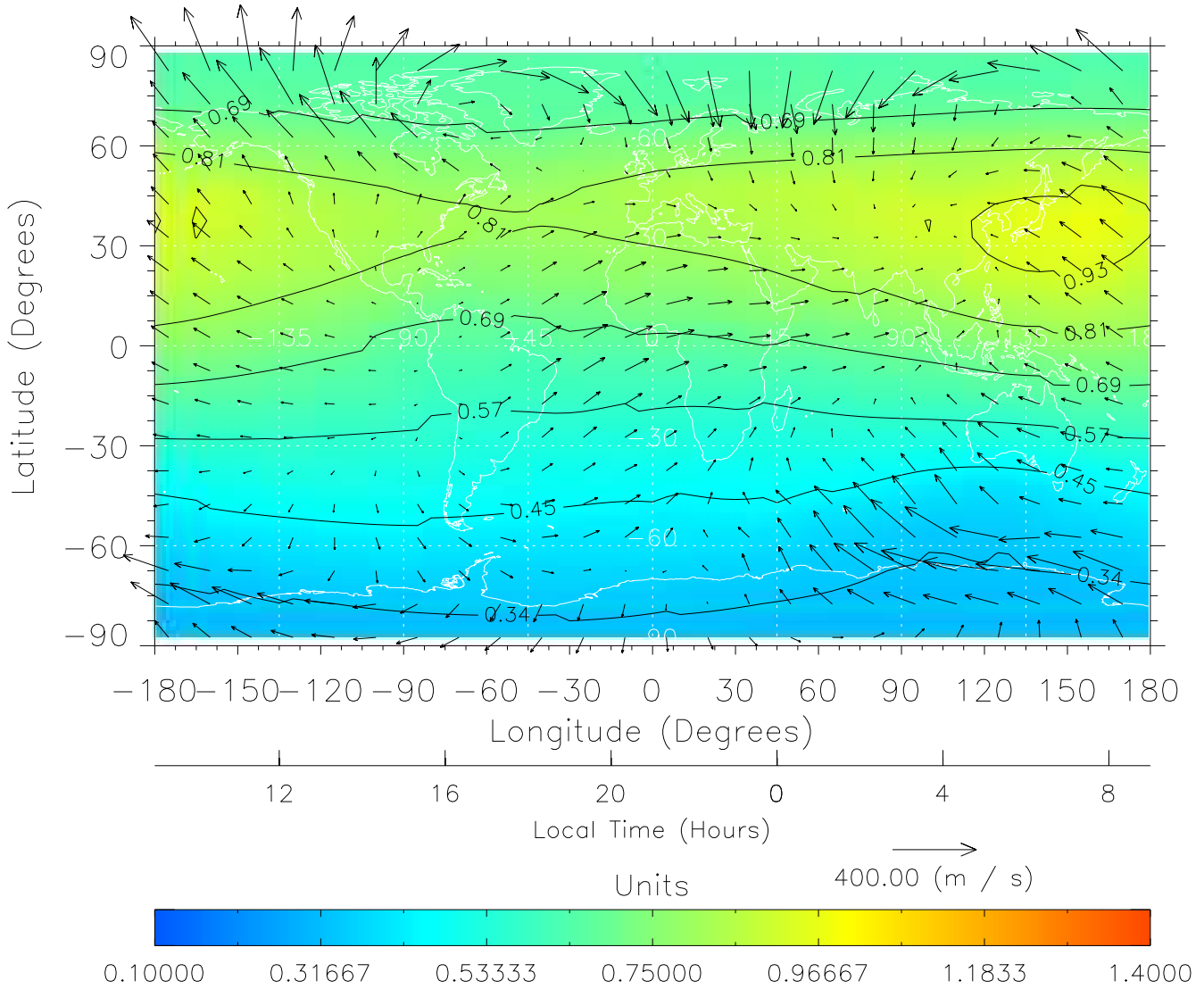
TIME-GCM MAP  $\Sigma O/N_2$  with Neutral Wind vectors  
ZP = 2.00 UT = 20.00 DOY = 322



Created: Fri Mar 11 14:03:06 2005

From: /tgcm/histories/secondary/November2003/November2003\_AMIE\_v3\_50\_65/322.nc

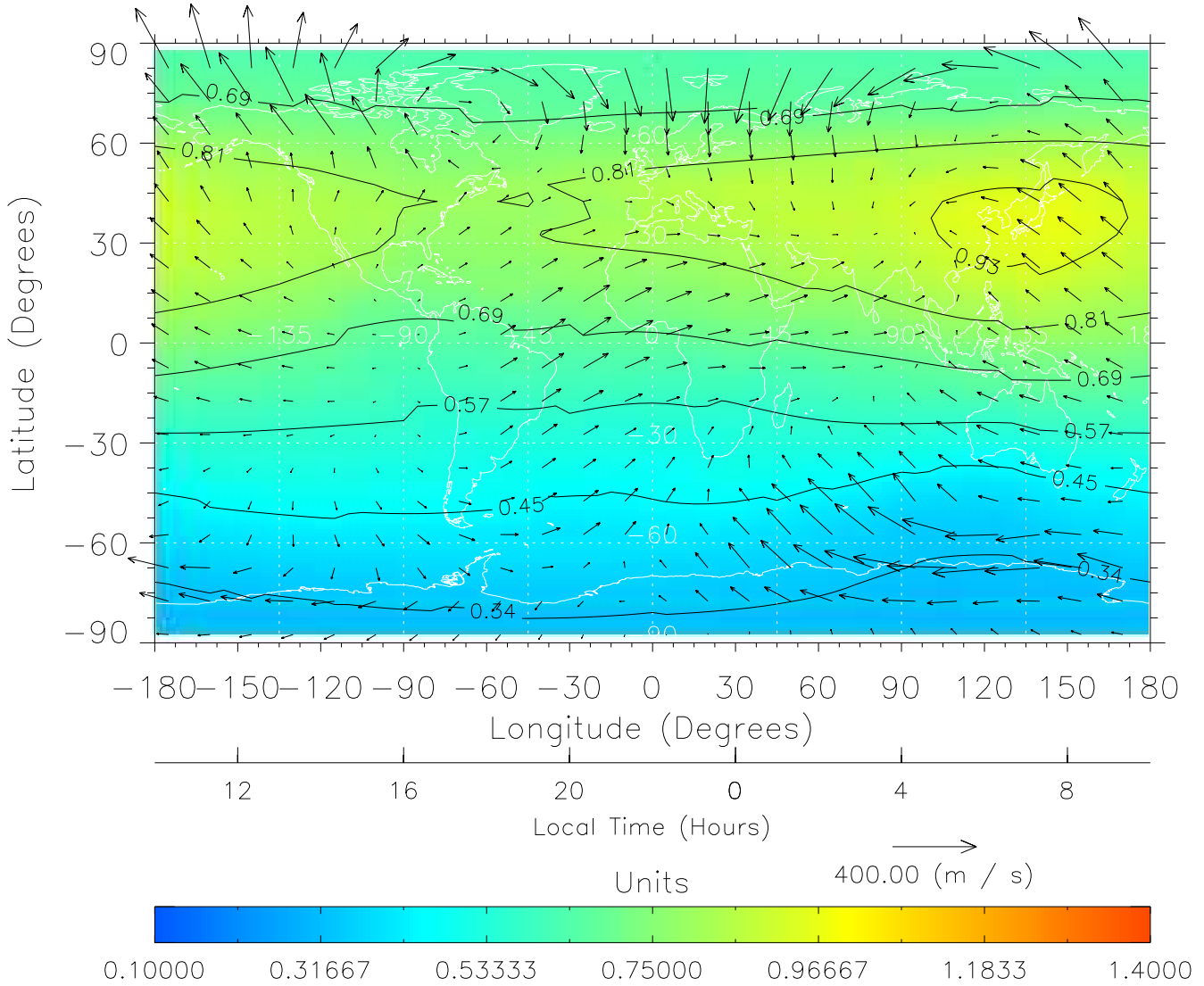
TIME-GCM MAP  $\Sigma O/N_2$  with Neutral Wind vectors  
ZP = 2.00 UT = 21.00 DOY = 322



Created: Fri Mar 11 14:03:07 2005

From: /tgcm/histories/secondary/November2003/November2003\_AMIE\_v3\_50\_65/322.nc

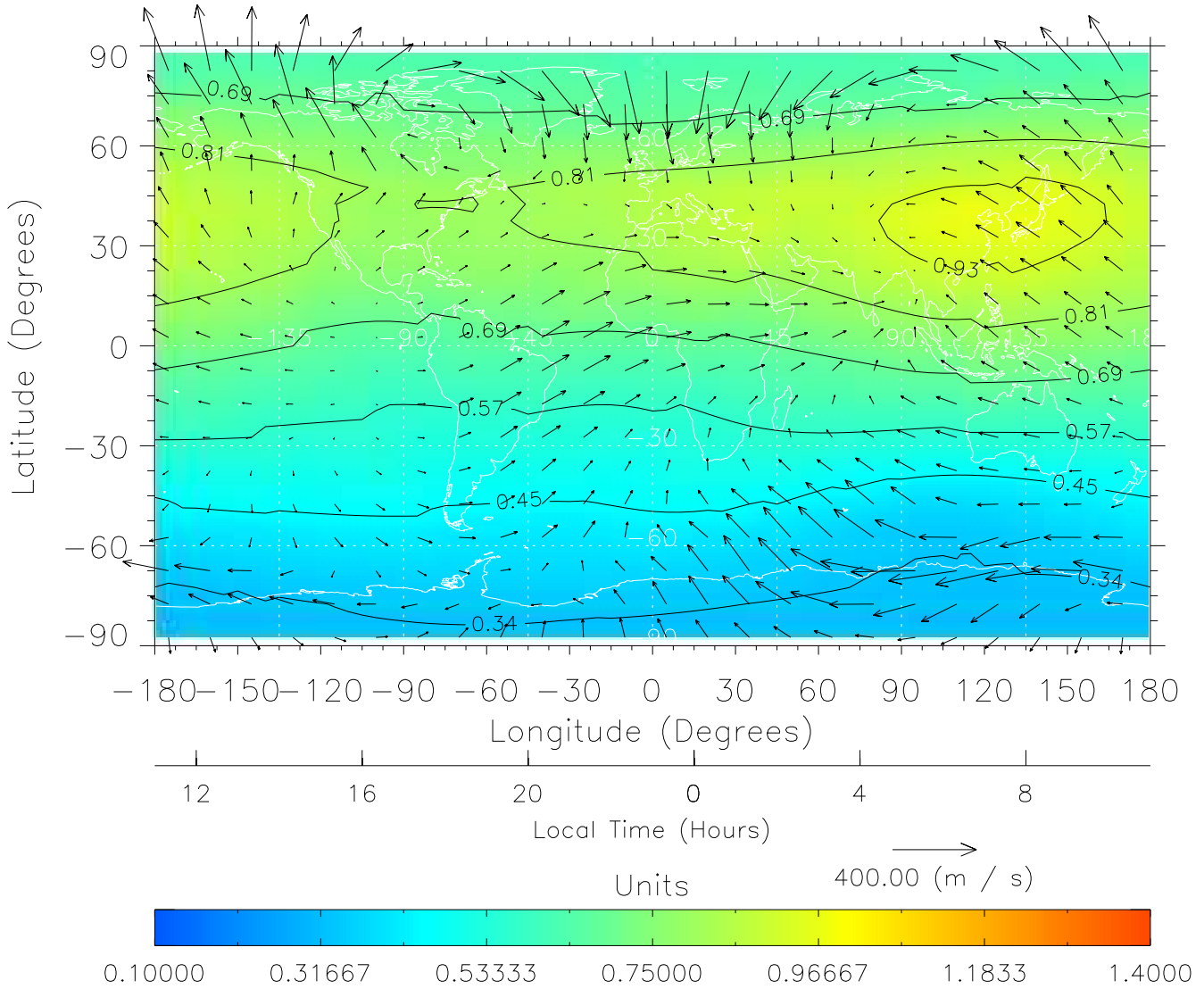
TIME-GCM MAP  $\Sigma O/N_2$  with Neutral Wind vectors  
ZP = 2.00 UT = 22.00 DOY = 322



Created: Fri Mar 11 14:03:07 2005

From: /tgcm/histories/secondary/November2003/November2003\_AMIE\_v3\_50\_65/322.nc

TIME-GCM MAP  $\Sigma O/N_2$  with Neutral Wind vectors  
ZP = 2.00 UT = 23.00 DOY = 322



Created: Fri Mar 11 14:03:08 2005

From: /tgcm/histories/secondary/November2003/November2003\_AMIE\_v3\_50\_65/322.nc