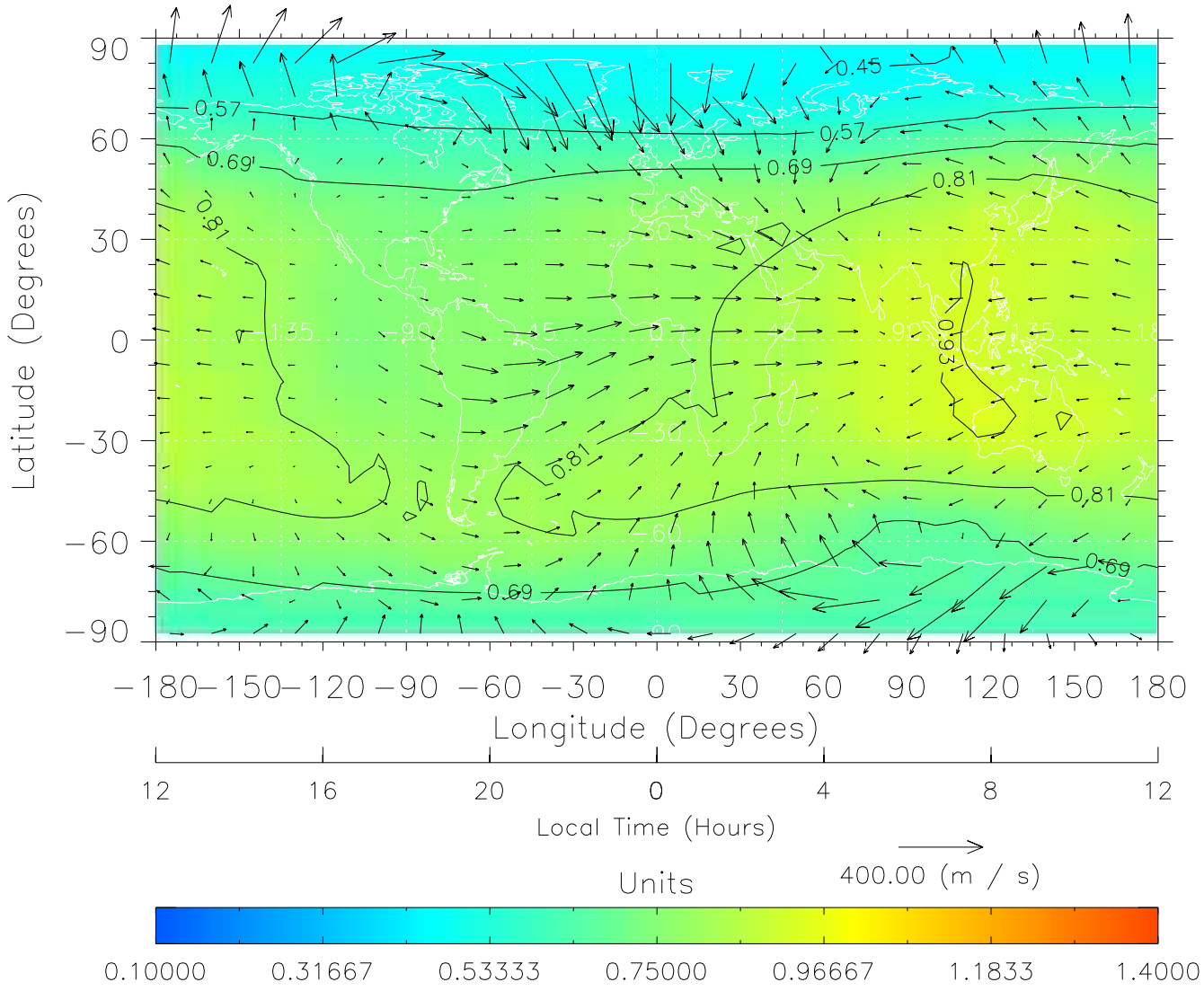


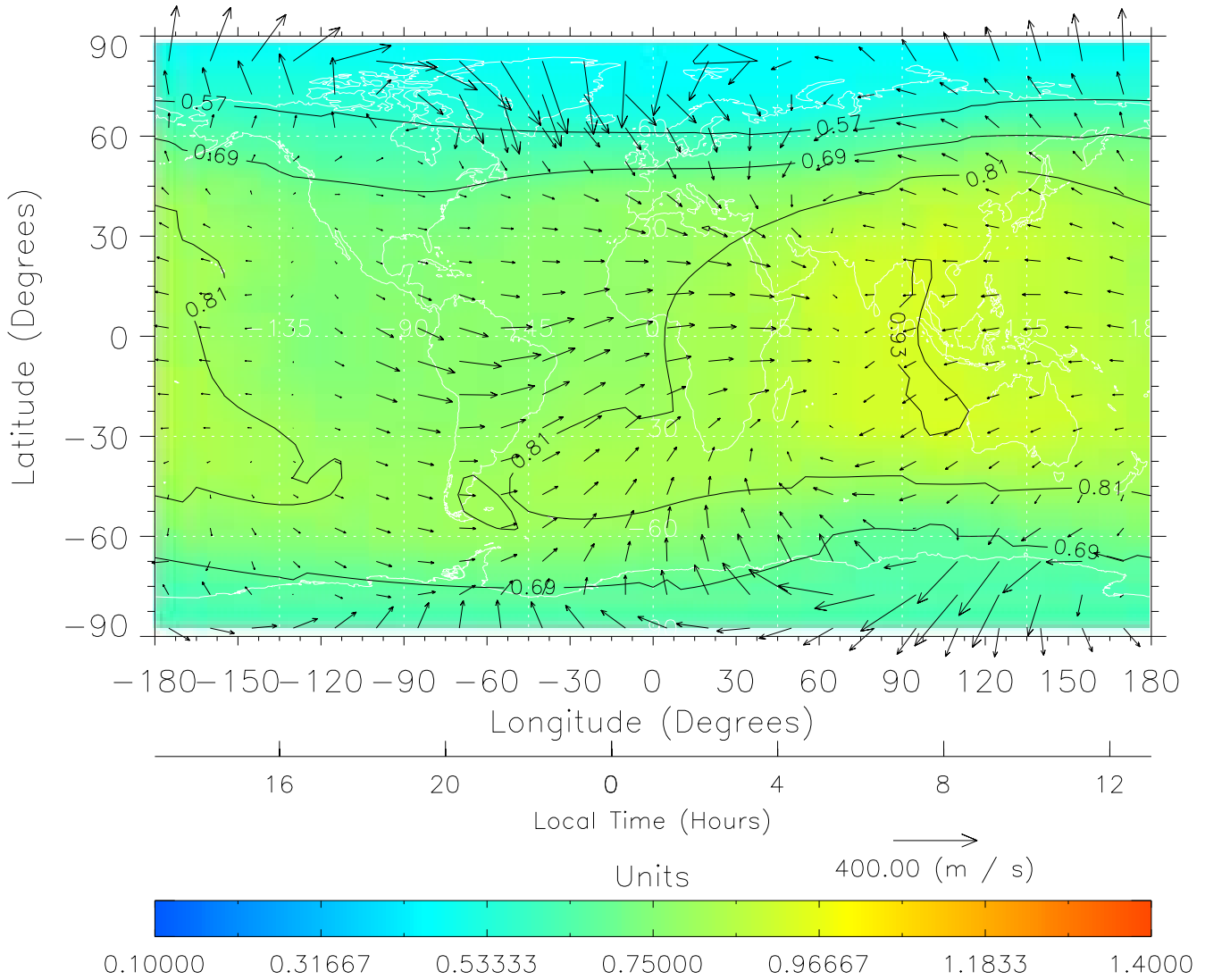
TIME-GCM MAP  $\Sigma O/N_2$  with Neutral Wind vectors  
ZP = 2.00 UT = 0.00 DOY = 089



Created: Thu Mar 10 14:10:05 2005

From: /tgcm/histories/secondary/March2001/March2001\_v1/089.nc

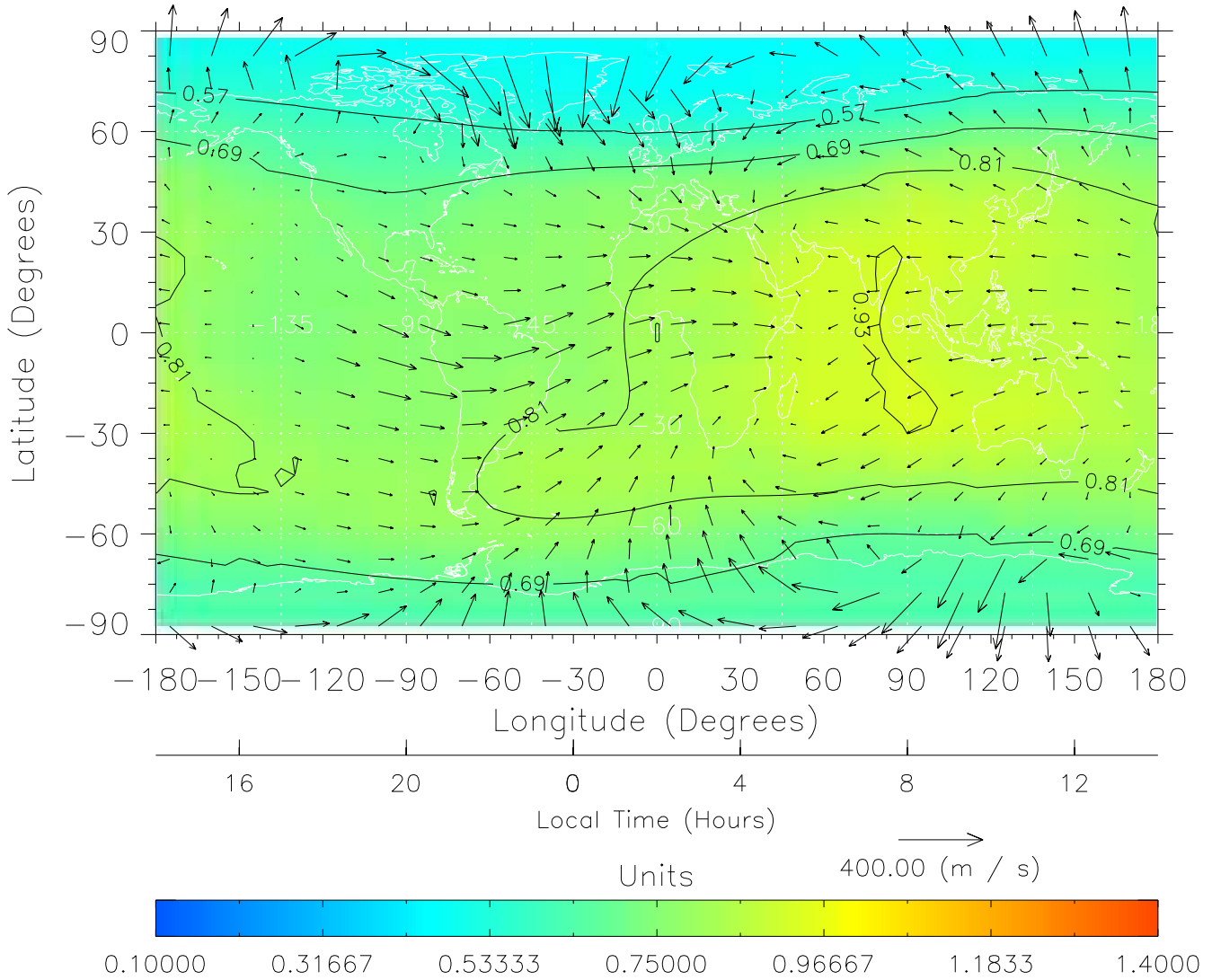
TIME-GCM MAP  $\Sigma O/N_2$  with Neutral Wind vectors  
ZP = 2.00 UT = 1.00 DOY = 089



Created: Thu Mar 10 14:10:05 2005

From: /tgcm/histories/secondary/March2001/March2001\_v1/089.nc

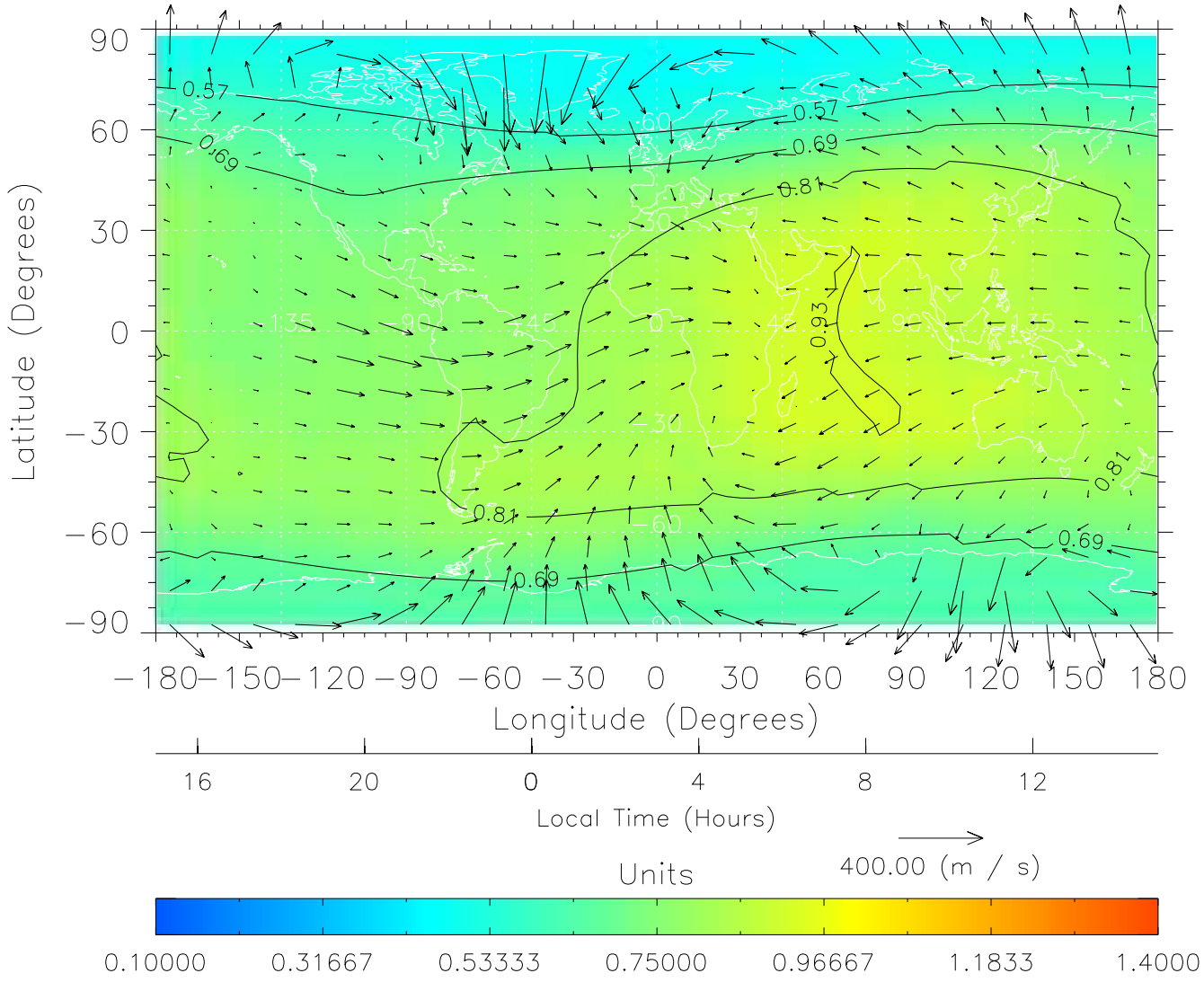
TIME-GCM MAP  $\Sigma O/N_2$  with Neutral Wind vectors  
ZP = 2.00 UT = 2.00 DOY = 089



Created: Thu Mar 10 14:10:06 2005

From: /tgcm/histories/secondary/March2001/March2001\_v1/089.nc

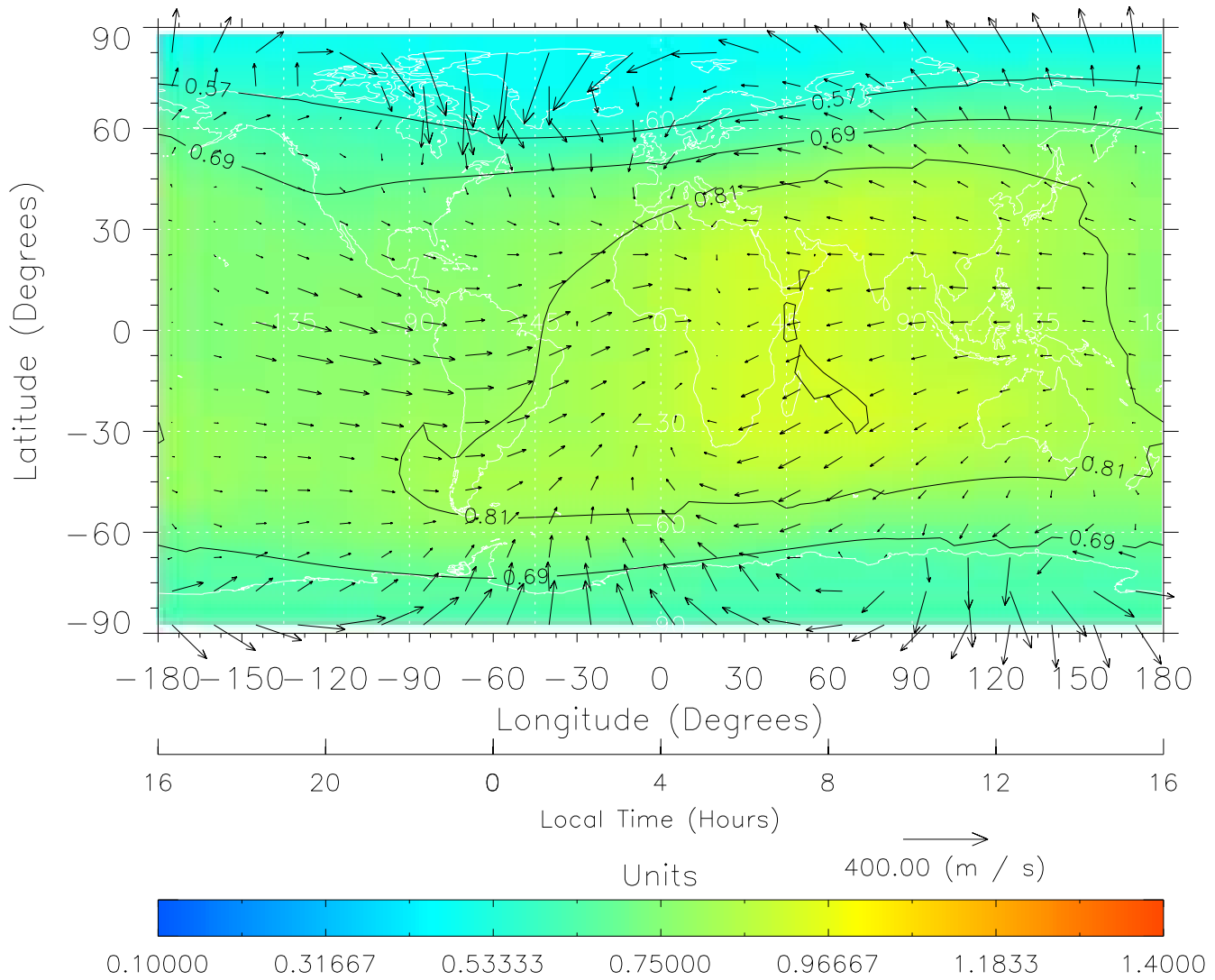
TIME-GCM MAP  $\Sigma O/N_2$  with Neutral Wind vectors  
ZP = 2.00 UT = 3.00 DOY = 089



Created: Thu Mar 10 14:10:06 2005

From: /tgcm/histories/secondary/March2001/March2001\_v1/089.nc

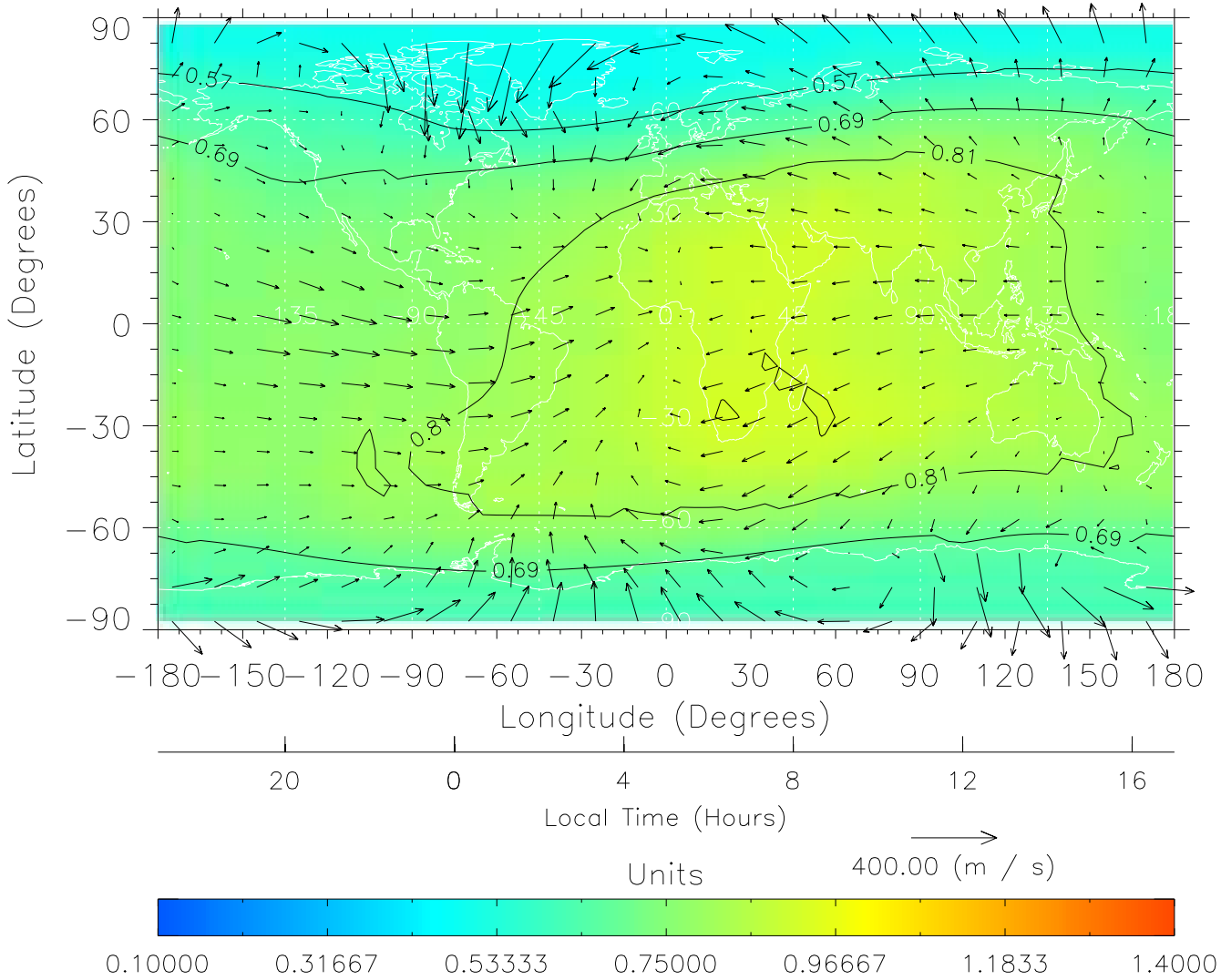
TIME-GCM MAP  $\Sigma O/N_2$  with Neutral Wind vectors  
ZP = 2.00 UT = 4.00 DOY = 089



Created: Thu Mar 10 14:10:07 2005

From: /tgcm/histories/secondary/March2001/March2001\_v1/089.nc

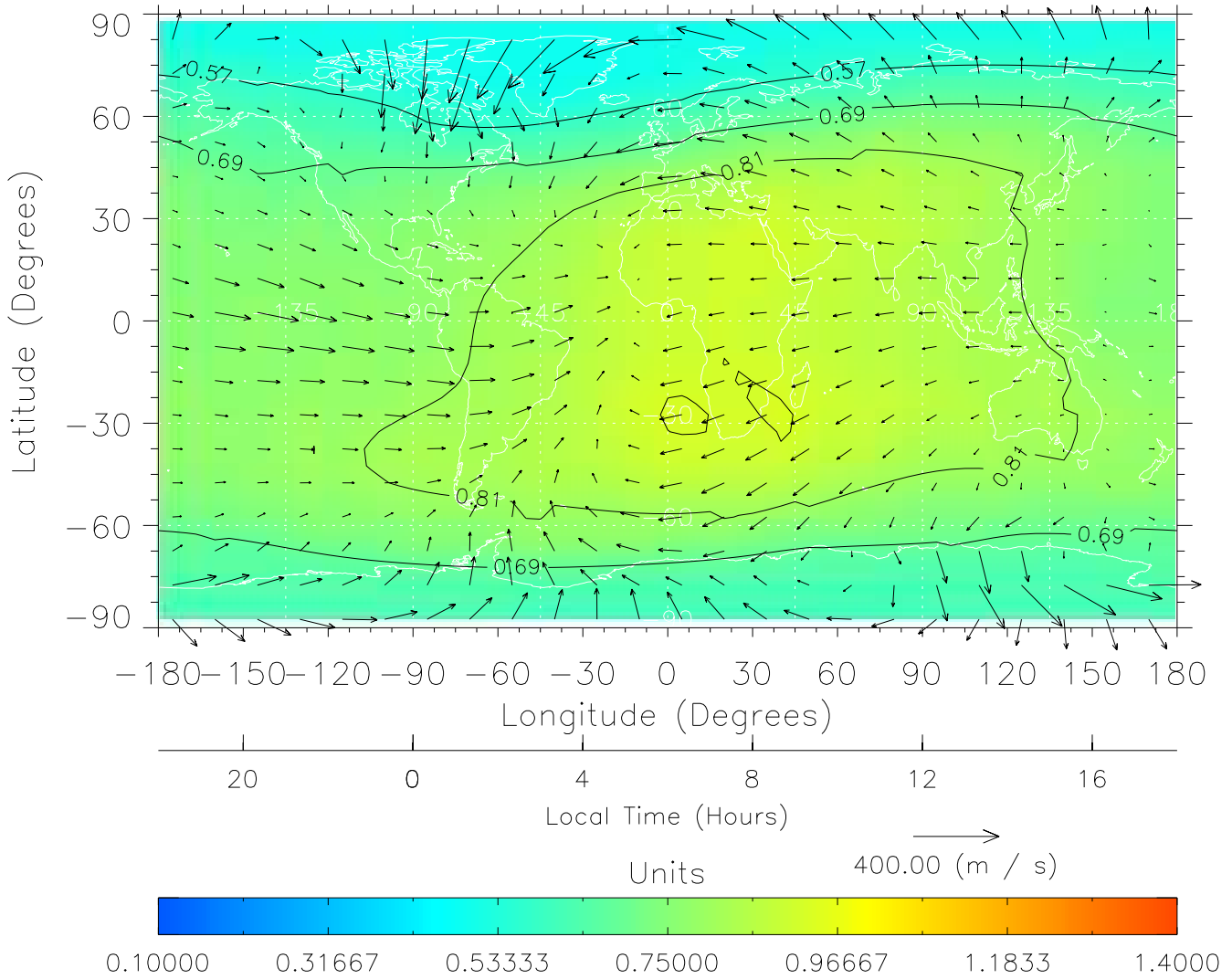
TIME-GCM MAP  $\Sigma O/N_2$  with Neutral Wind vectors  
ZP = 2.00 UT = 5.00 DOY = 089



Created: Thu Mar 10 14:10:07 2005

From: /tgcm/histories/secondary/March2001/March2001\_v1/089.nc

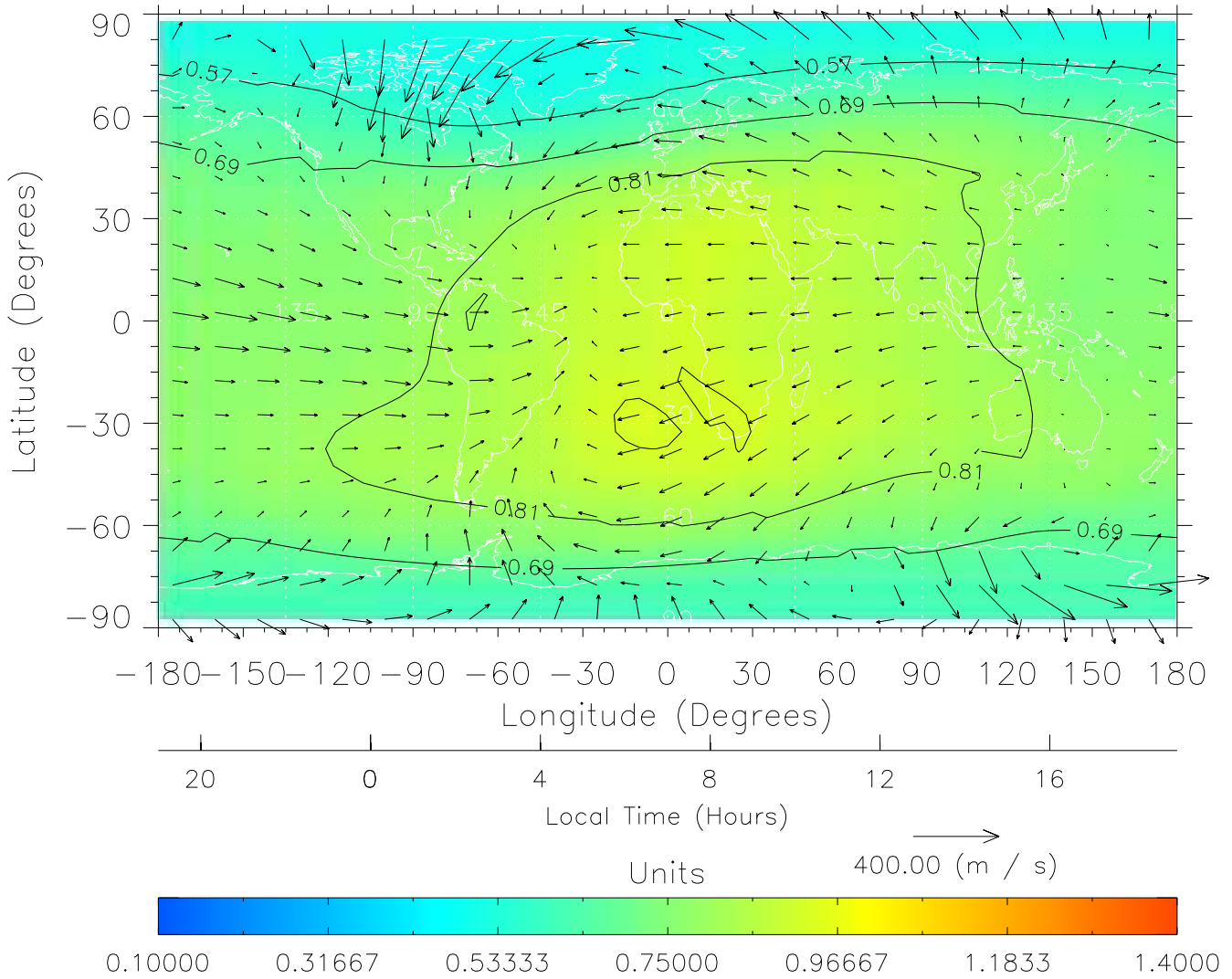
TIME-GCM MAP  $\Sigma O/N_2$  with Neutral Wind vectors  
ZP = 2.00 UT = 6.00 DOY = 089



Created: Thu Mar 10 14:10:08 2005

From: /tgcm/histories/secondary/March2001/March2001\_v1/089.nc

TIME-GCM MAP  $\Sigma O/N_2$  with Neutral Wind vectors  
ZP = 2.00 UT = 7.00 DOY = 089

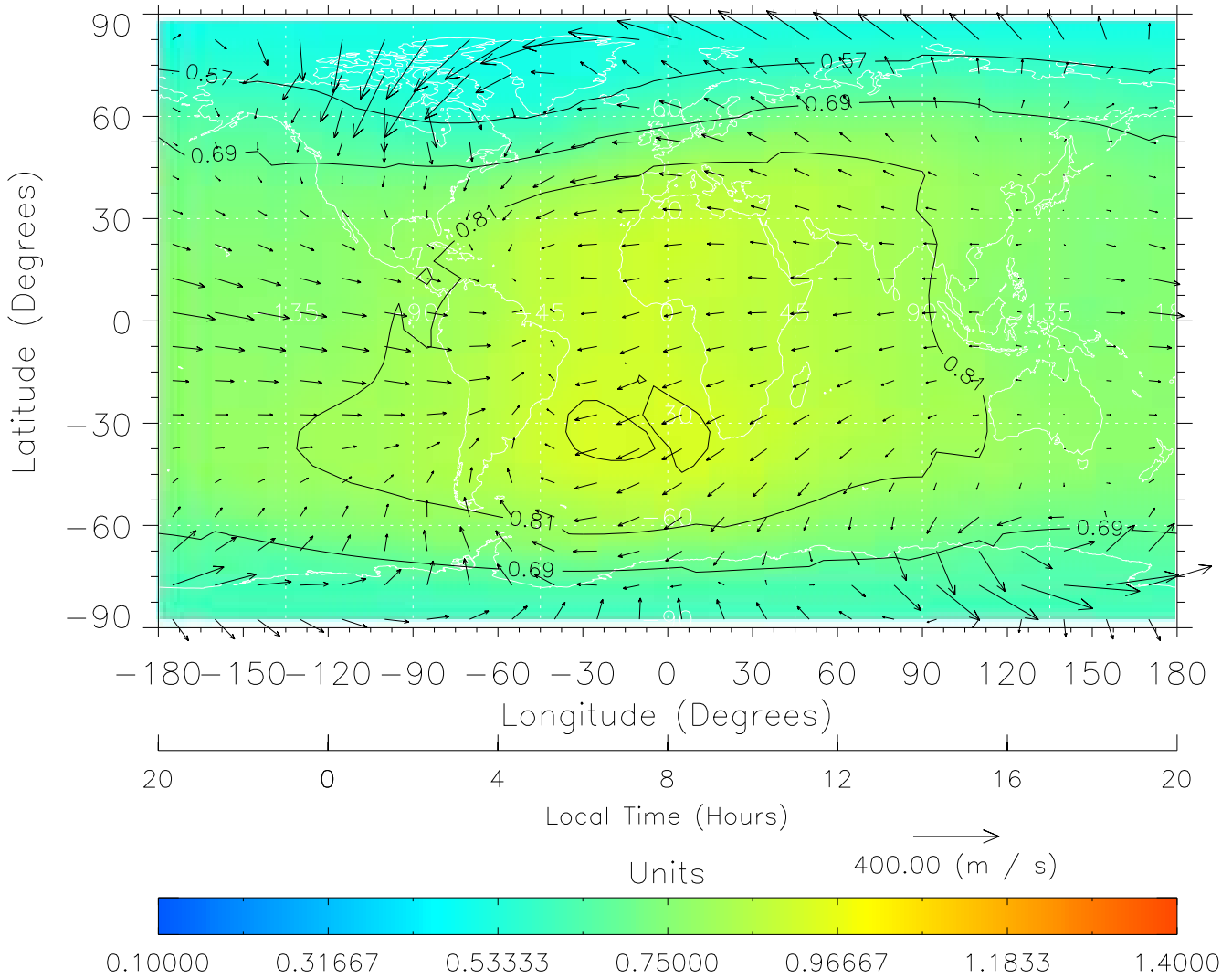


Created: Thu Mar 10 14:10:08 2005

From: /tgcm/histories/secondary/March2001/March2001\_v1/089.nc



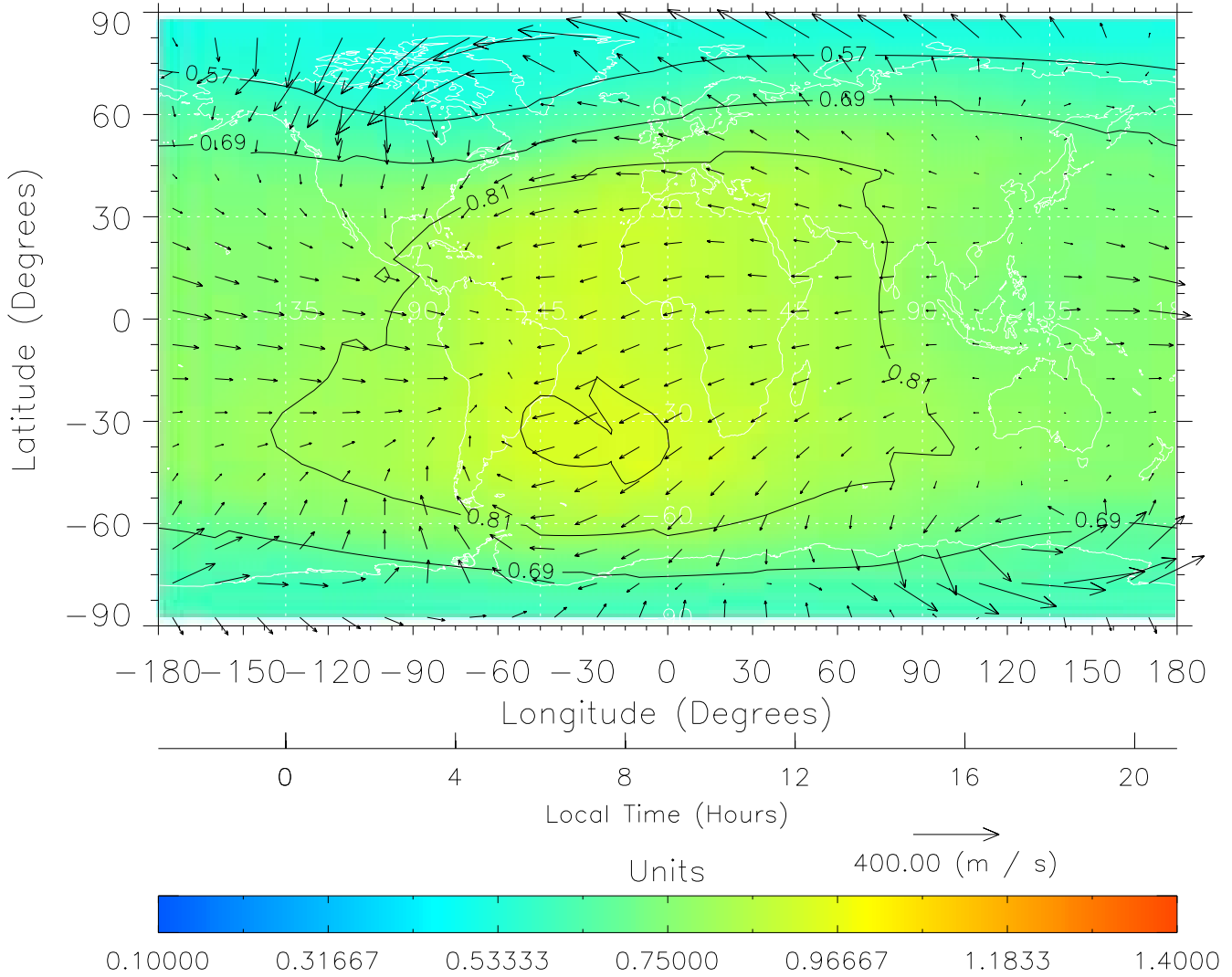
TIME-GCM MAP  $\Sigma O/N_2$  with Neutral Wind vectors  
ZP = 2.00 UT = 8.00 DOY = 089



Created: Thu Mar 10 14:10:09 2005

From: /tgcm/histories/secondary/March2001/March2001\_v1/089.nc

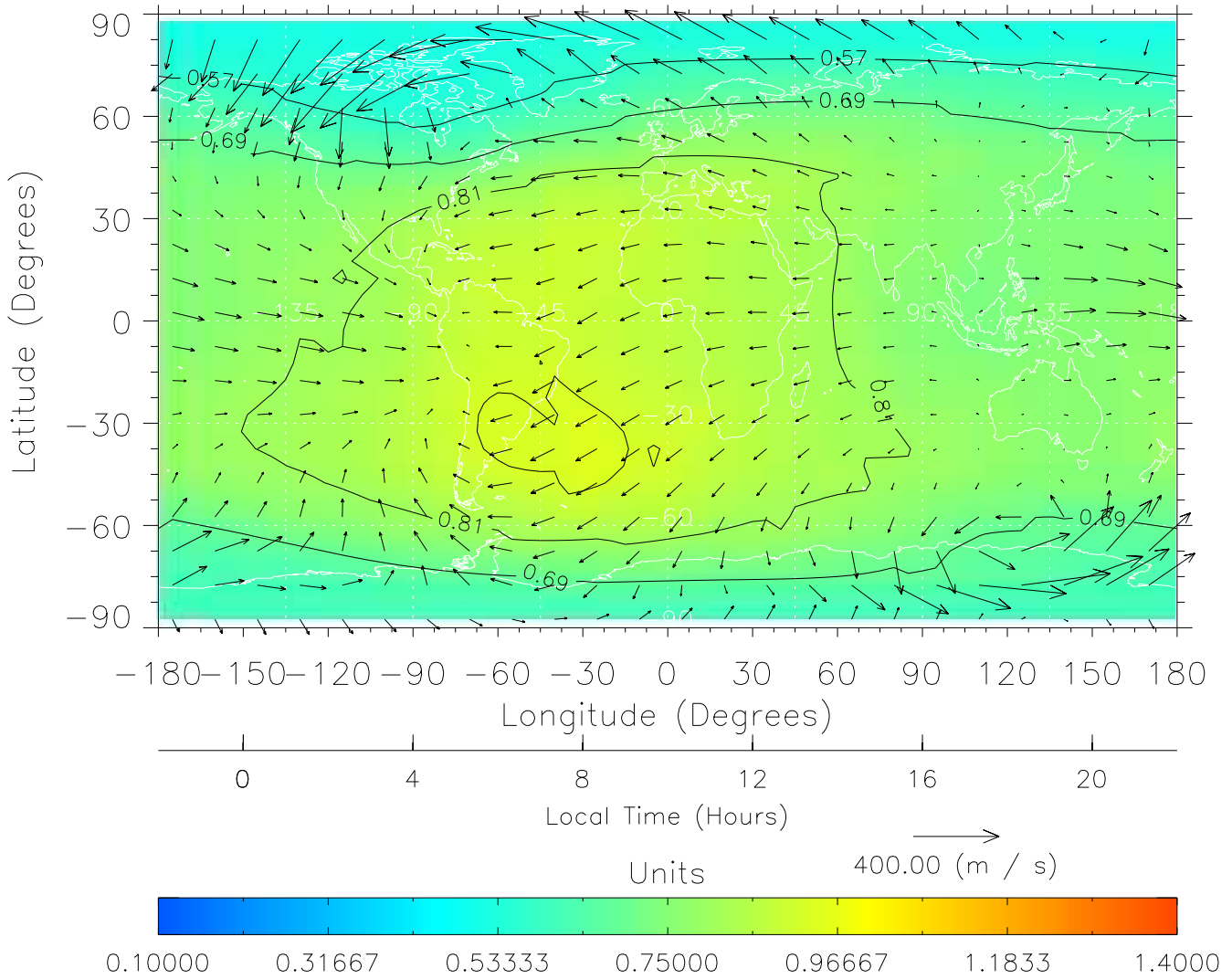
TIME-GCM MAP  $\Sigma O/N_2$  with Neutral Wind vectors  
ZP = 2.00 UT = 9.00 DOY = 089



Created: Thu Mar 10 14:10:09 2005

From: /tgcm/histories/secondary/March2001/March2001\_v1/089.nc

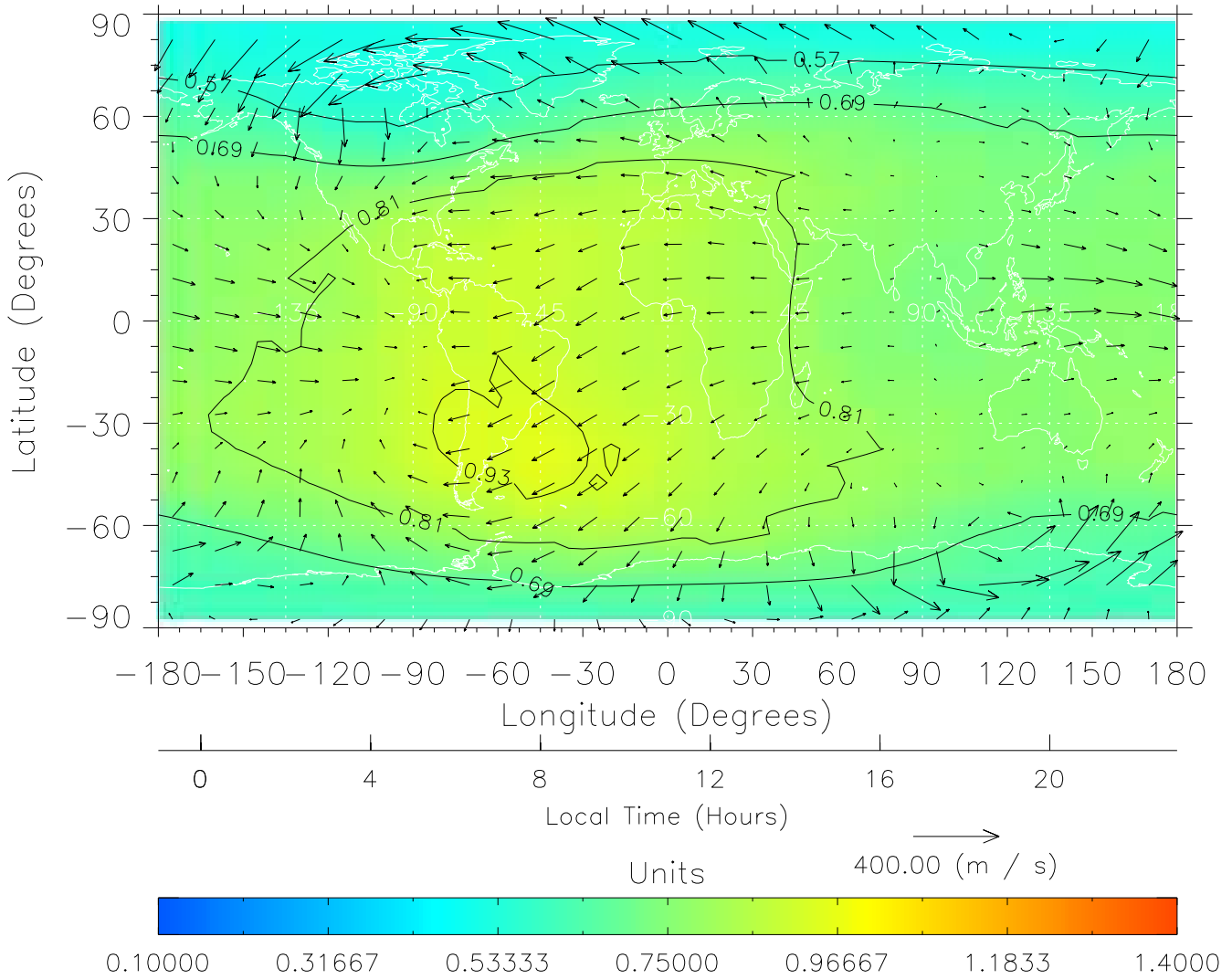
TIME-GCM MAP  $\Sigma O/N_2$  with Neutral Wind vectors  
ZP = 2.00 UT = 10.00 DOY = 089



Created: Thu Mar 10 14:10:10 2005

From: /tgcm/histories/secondary/March2001/March2001\_v1/089.nc

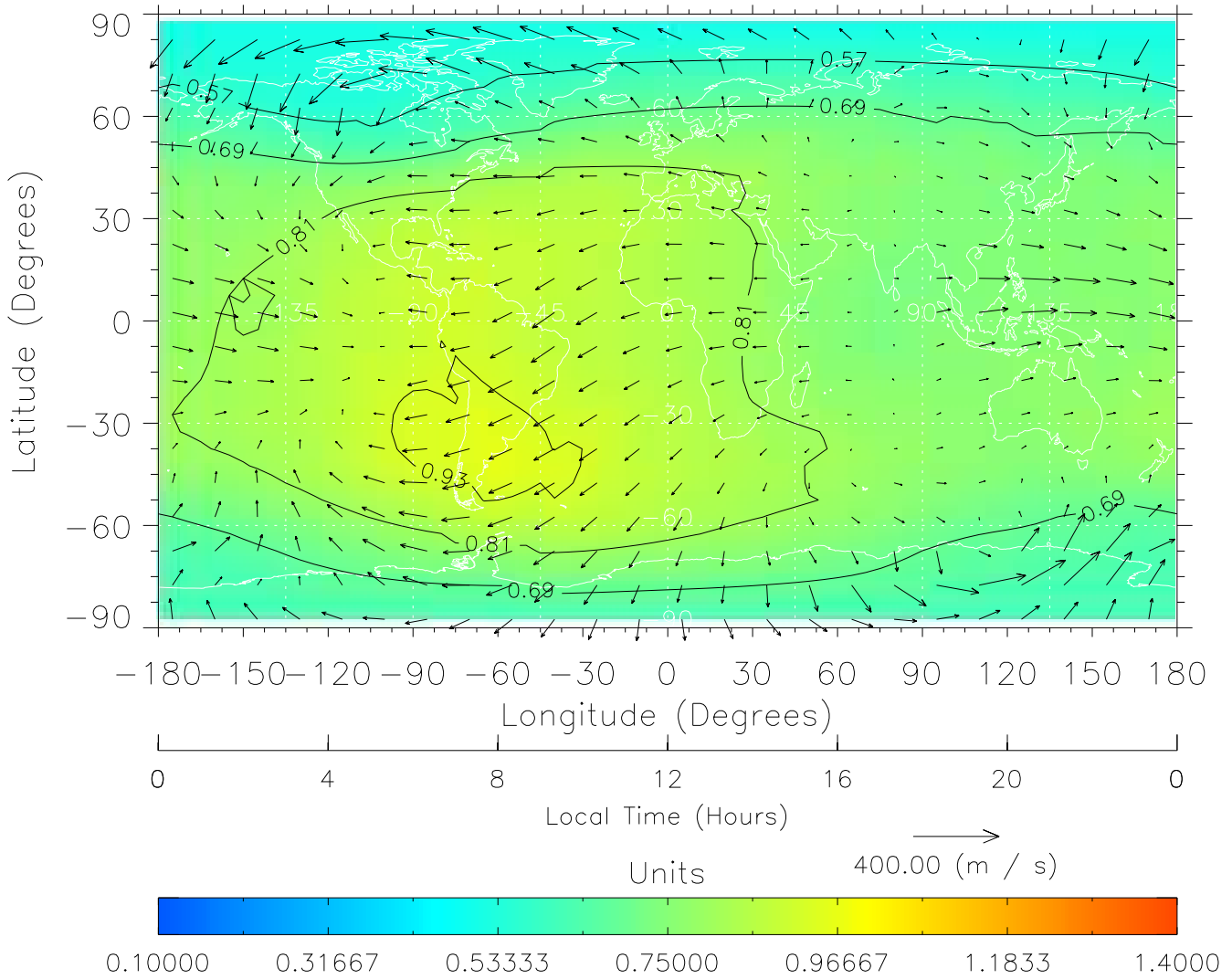
TIME-GCM MAP  $\Sigma O/N_2$  with Neutral Wind vectors  
ZP = 2.00 UT = 11.00 DOY = 089



Created: Thu Mar 10 14:10:10 2005

From: /tgcm/histories/secondary/March2001/March2001\_v1/089.nc

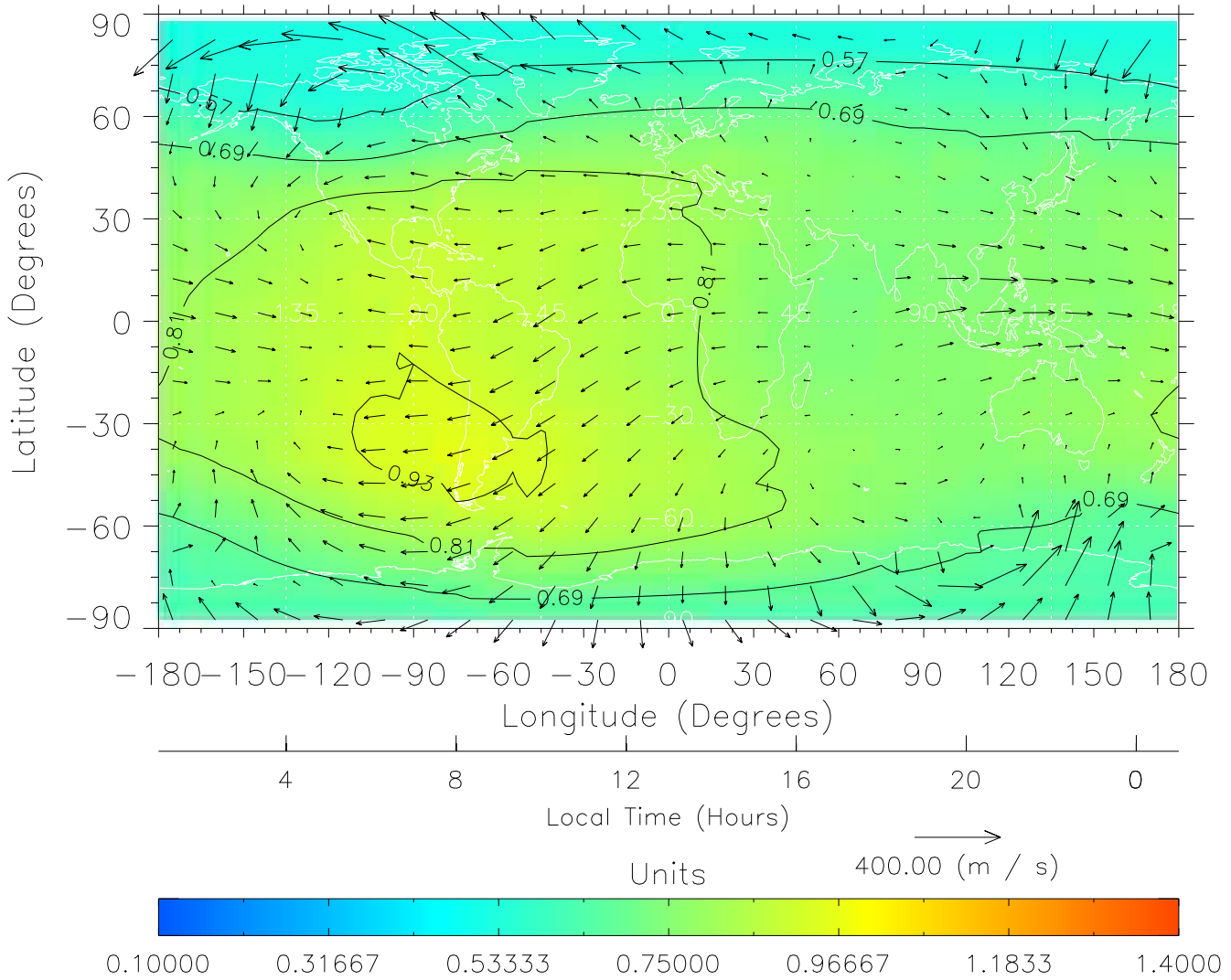
TIME-GCM MAP  $\Sigma O/N_2$  with Neutral Wind vectors  
ZP = 2.00 UT = 12.00 DOY = 089



Created: Thu Mar 10 14:10:11 2005

From: /tgcm/histories/secondary/March2001/March2001\_v1/089.nc

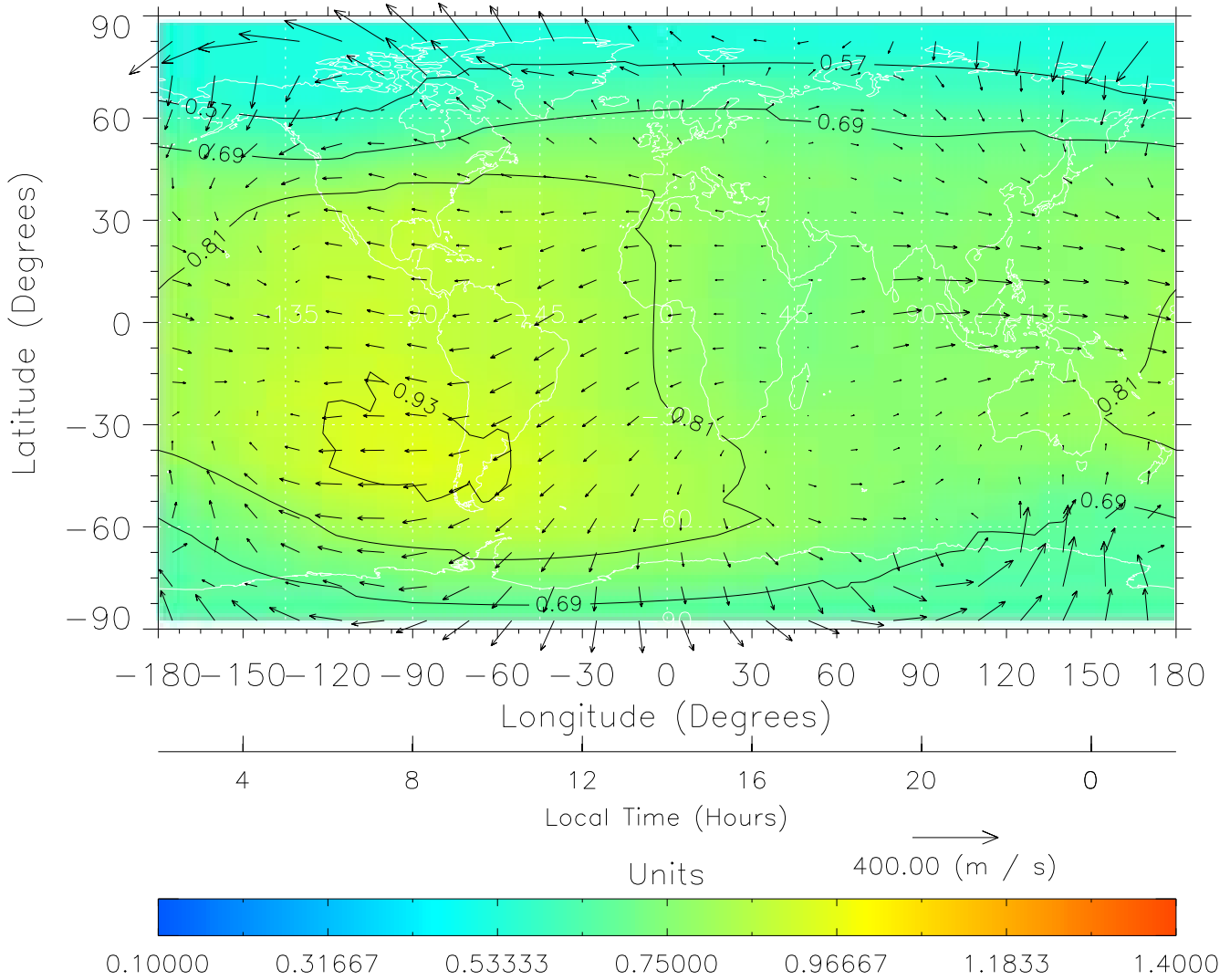
TIME-GCM MAP  $\Sigma O/N_2$  with Neutral Wind vectors  
ZP = 2.00 UT = 13.00 DOY = 089



Created: Thu Mar 10 14:10:11 2005

From: /tgcm/histories/secondary/March2001/March2001\_v1/089.nc

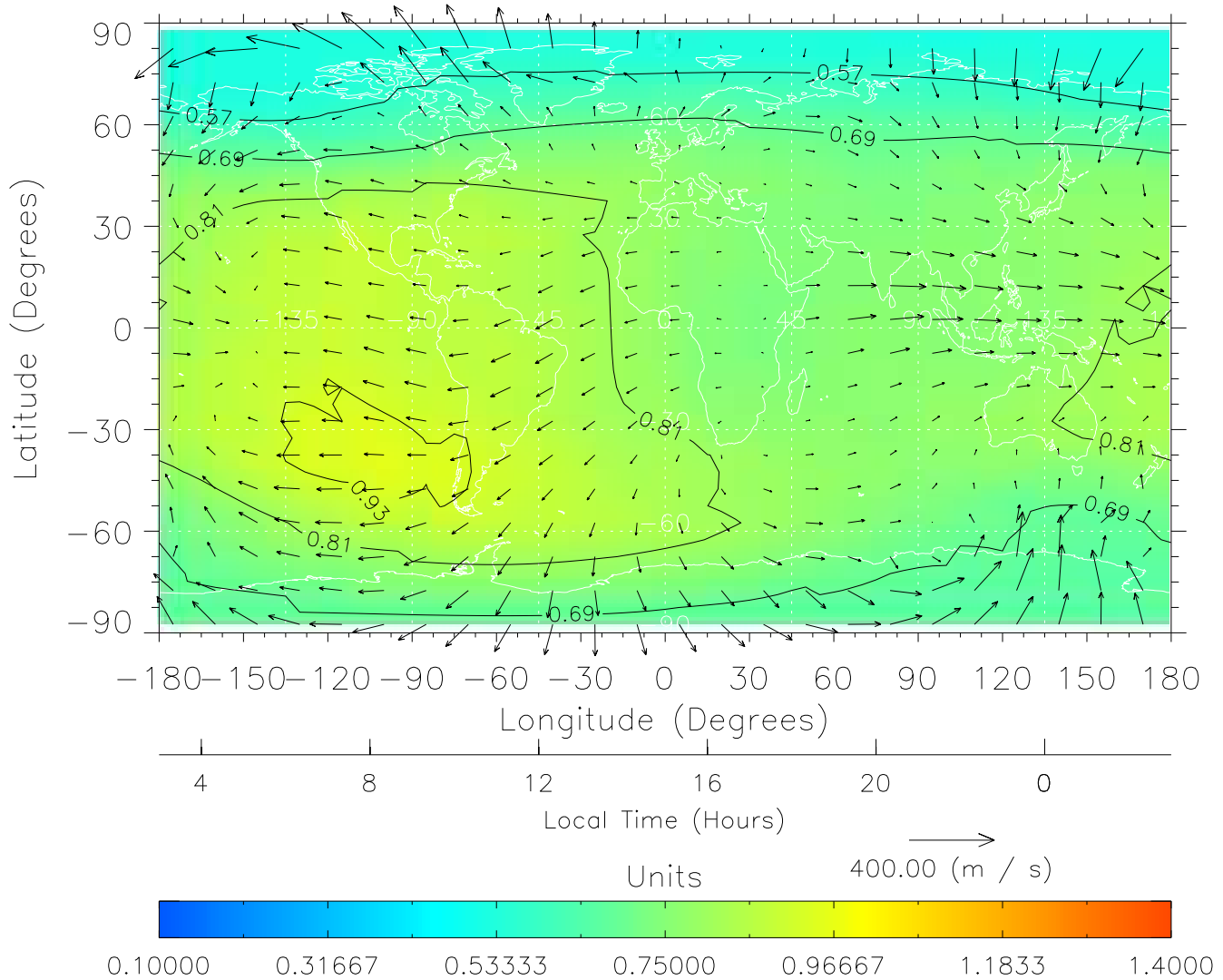
TIME-GCM MAP  $\Sigma O/N_2$  with Neutral Wind vectors  
ZP = 2.00 UT = 14.00 DOY = 089



Created: Thu Mar 10 14:10:12 2005

From: /tgcm/histories/secondary/March2001/March2001\_v1/089.nc

TIME-GCM MAP  $\Sigma O/N_2$  with Neutral Wind vectors  
ZP = 2.00 UT = 15.00 DOY = 089

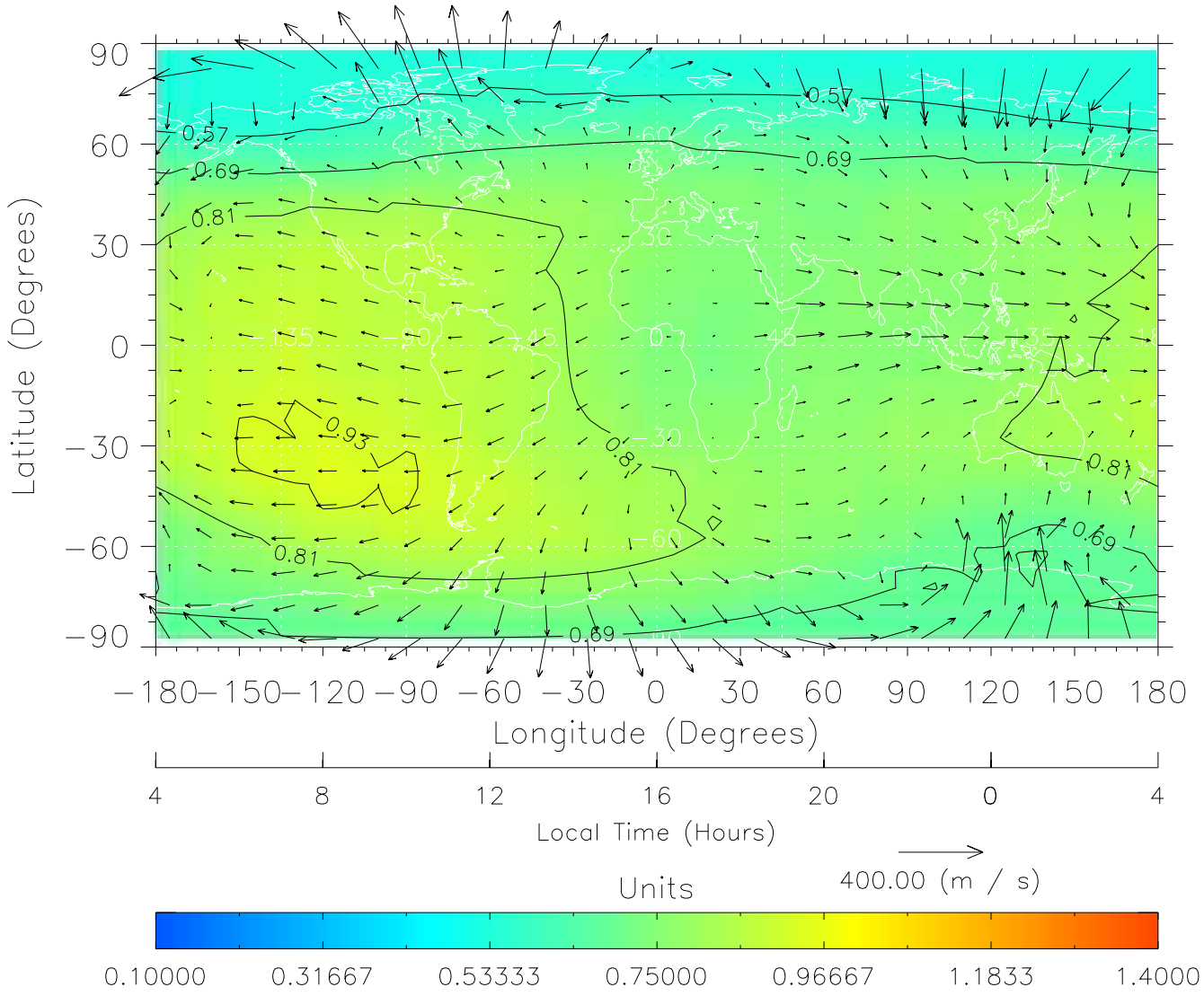


Created: Thu Mar 10 14:10:12 2005

From: /tgcm/histories/secondary/March2001/March2001\_v1/089.nc



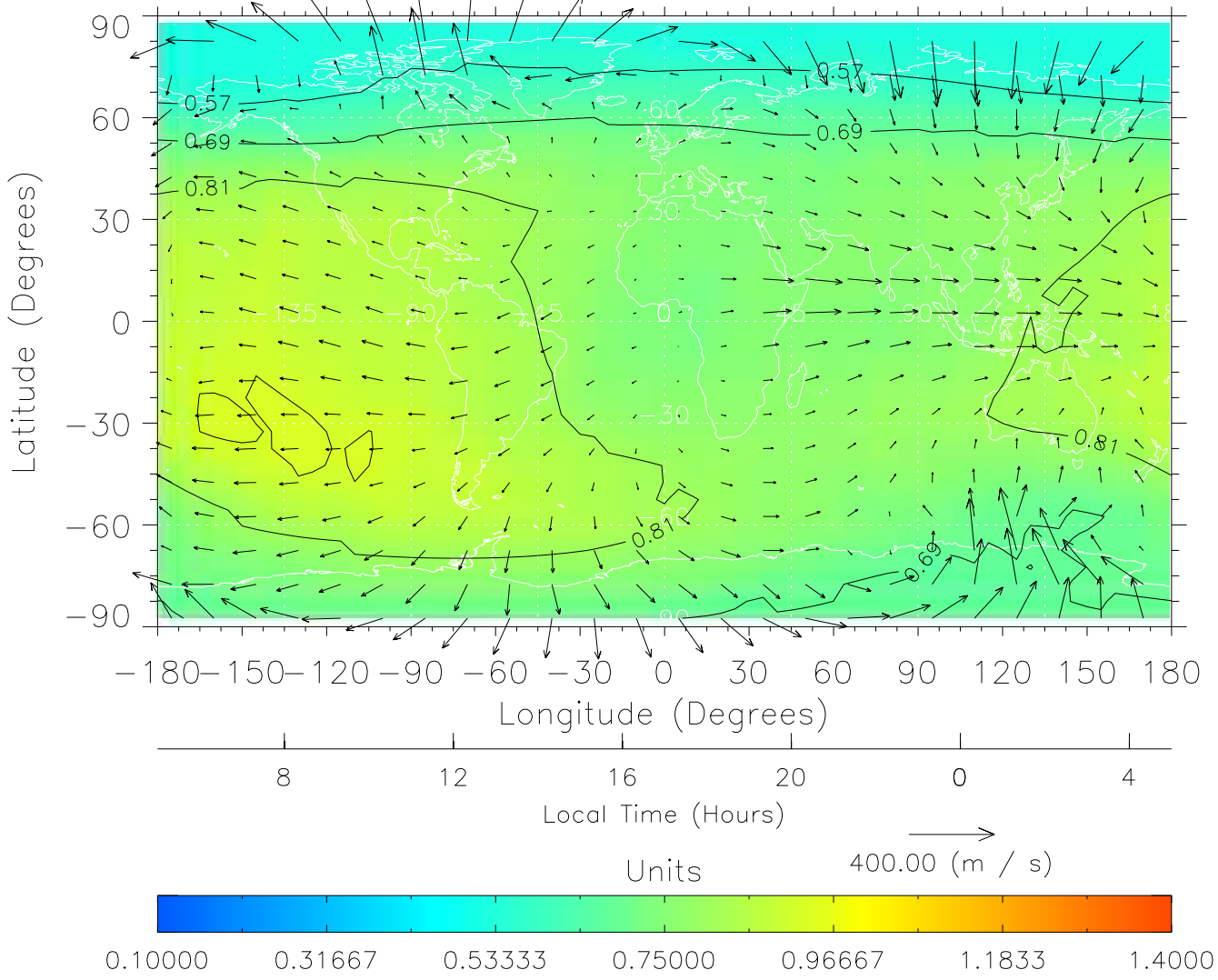
TIME-GCM MAP  $\Sigma O/N_2$  with Neutral Wind vectors  
ZP = 2.00 UT = 16.00 DOY = 089



Created: Thu Mar 10 14:10:13 2005

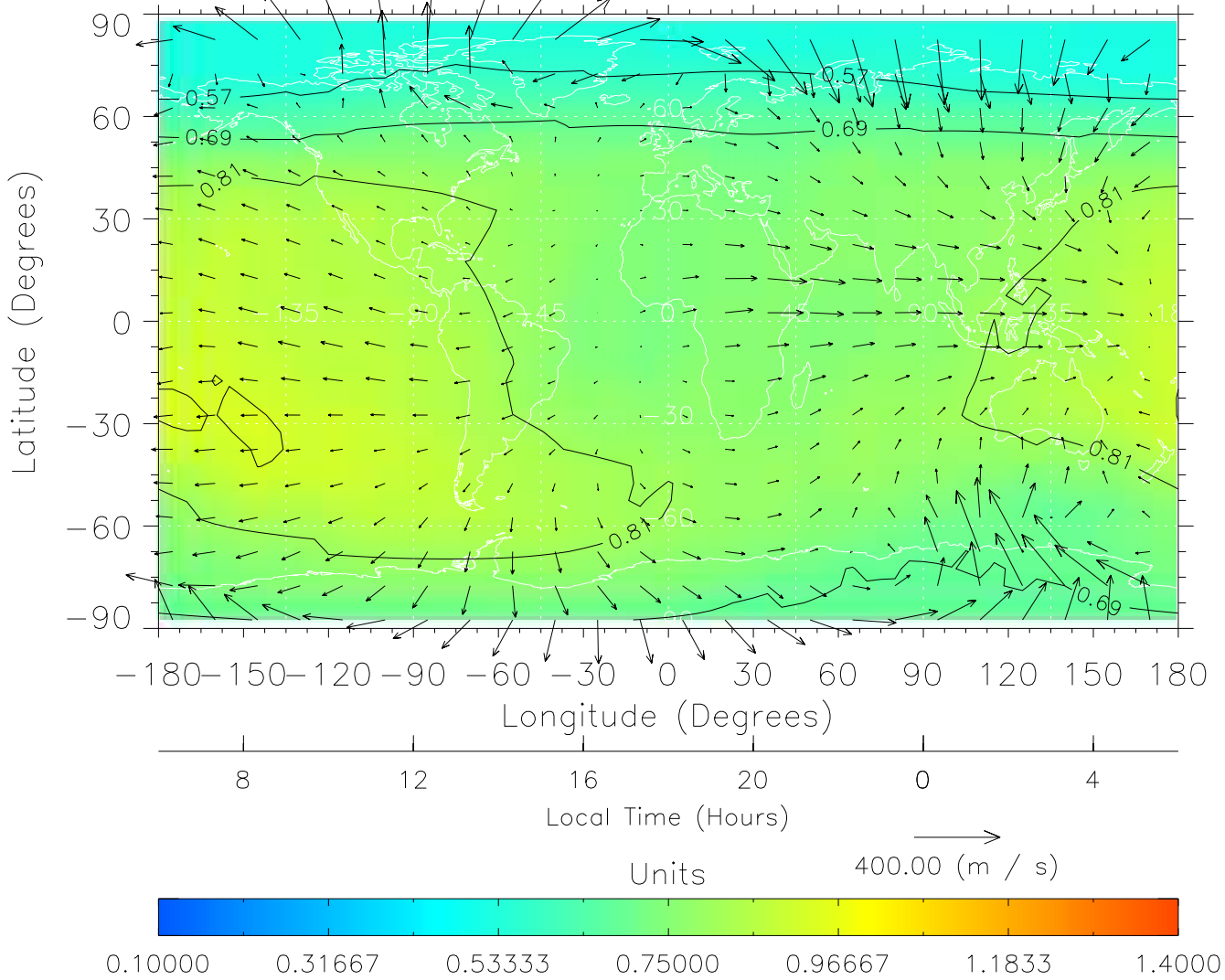
From: /tgcm/histories/secondary/March2001/March2001\_v1/089.nc

TIME-GCM MAP  $\Sigma O/N_2$  with Neutral Wind vectors  
ZP = 2.00 UT = 17.00 DOY = 089



Created: Thu Mar 10 14:10:13 2005  
From: /tgcm/histories/secondary/March2001/March2001\_v1/089.nc

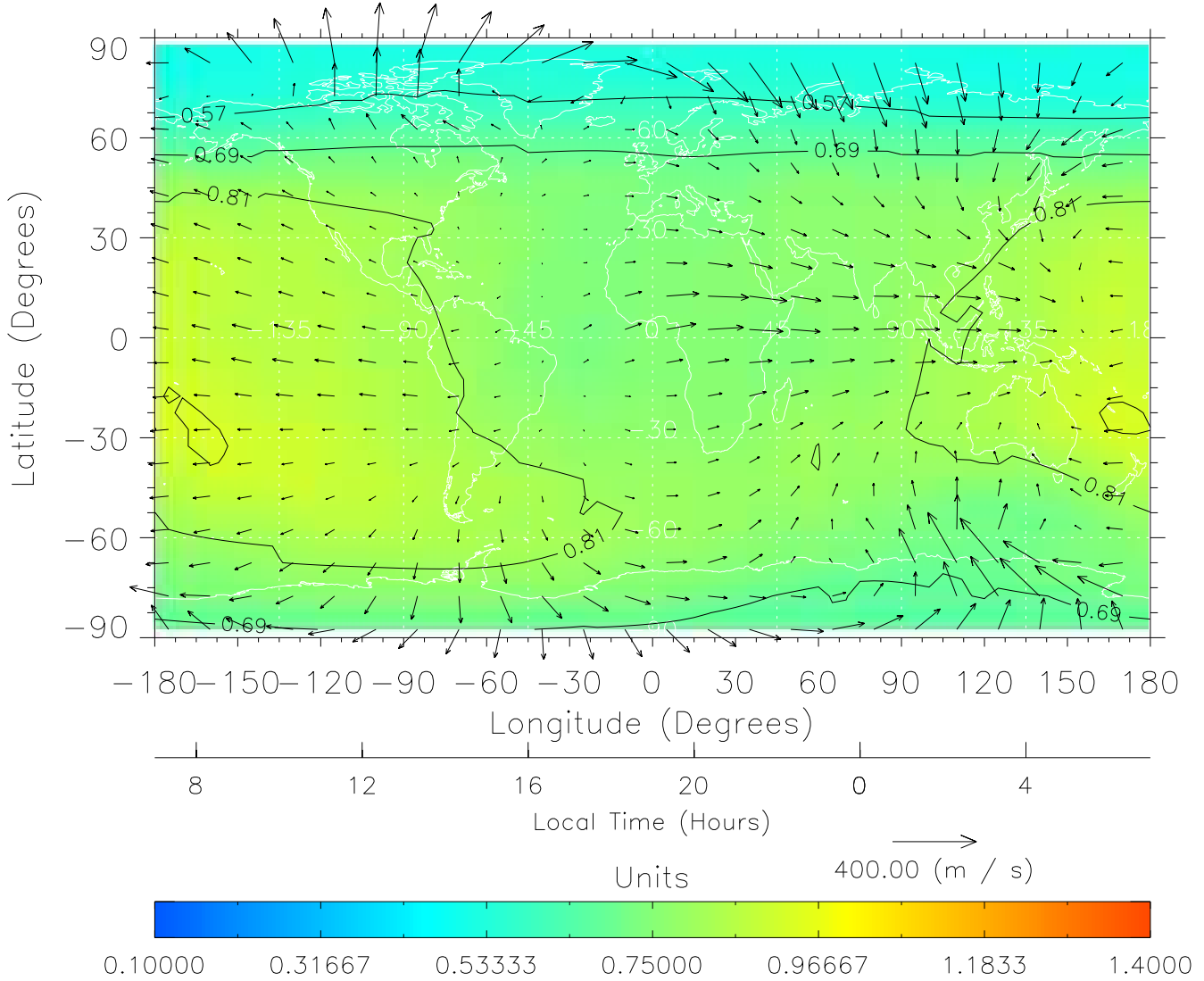
TIME-GCM MAP  $\Sigma O/N_2$  with Neutral Wind vectors  
ZP = 2.00 UT = 18.00 DOY = 089



Created: Thu Mar 10 14:10:14 2005

From: /tgcm/histories/secondary/March2001/March2001\_v1/089.nc

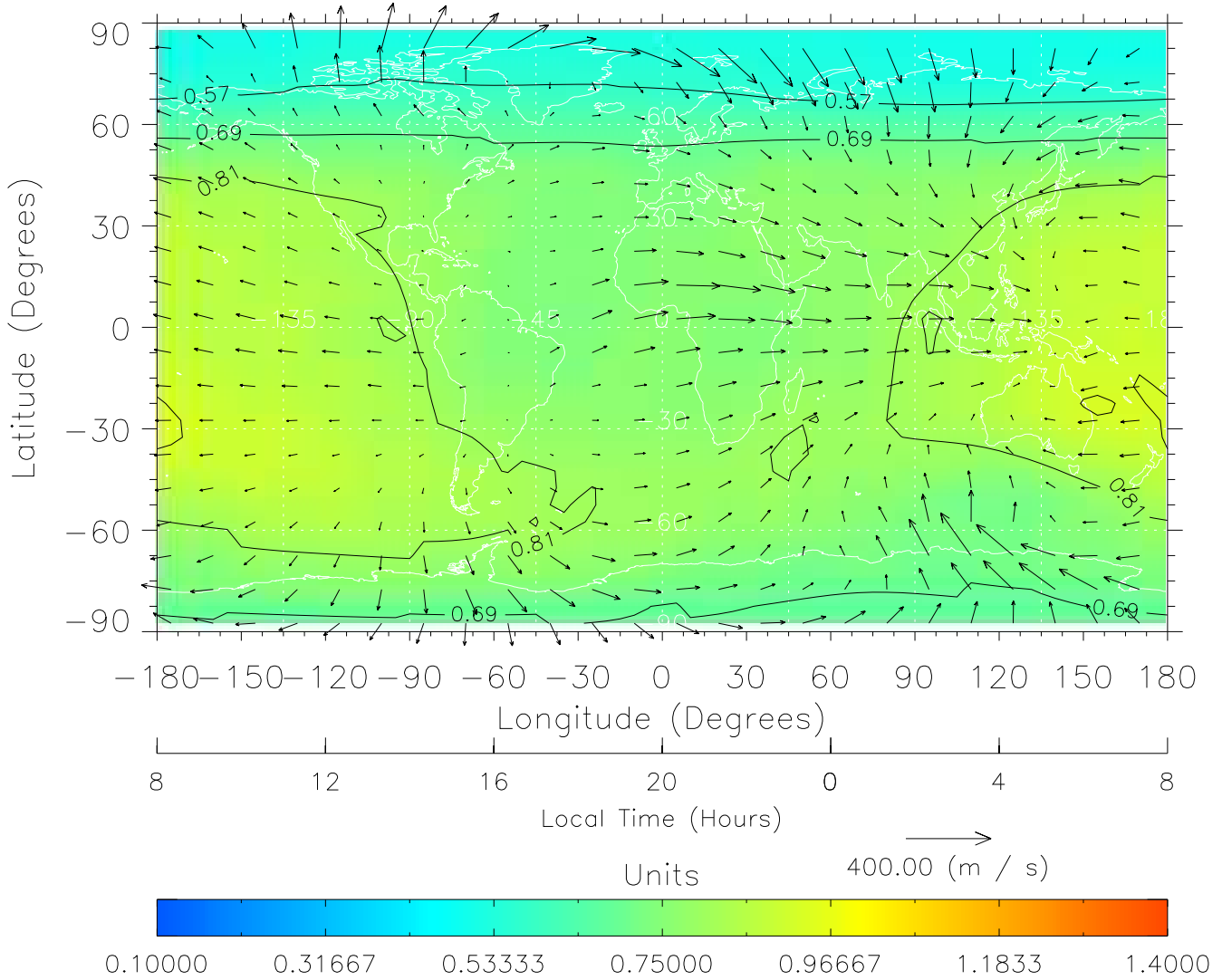
TIME-GCM MAP  $\Sigma O/N_2$  with Neutral Wind vectors  
ZP = 2.00 UT = 19.00 DOY = 089



Created: Thu Mar 10 14:10:14 2005

From: /tgcm/histories/secondary/March2001/March2001\_v1/089.nc

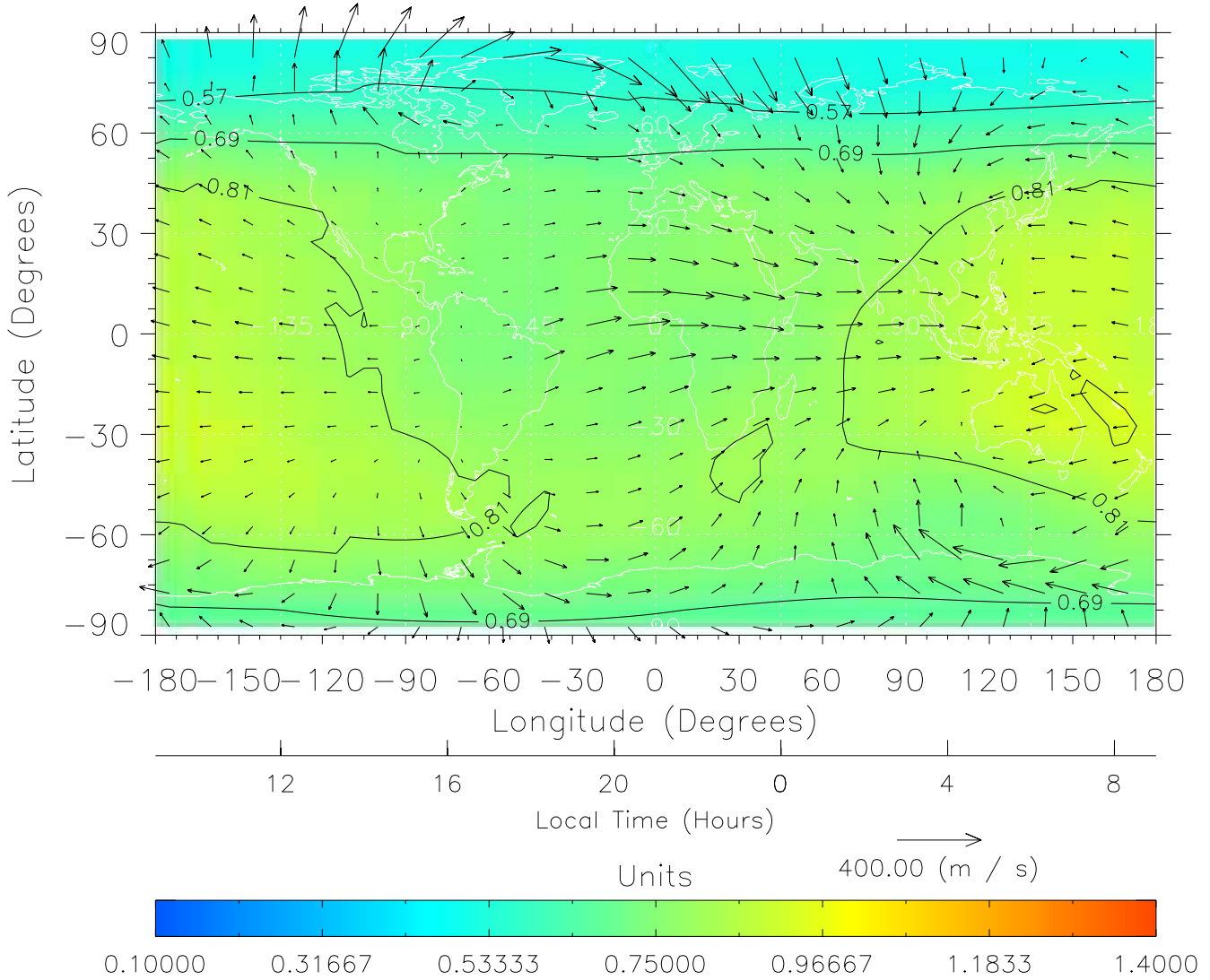
TIME-GCM MAP  $\Sigma O/N_2$  with Neutral Wind vectors  
ZP = 2.00 UT = 20.00 DOY = 089



Created: Thu Mar 10 14:10:15 2005

From: /tgcm/histories/secondary/March2001/March2001\_v1/089.nc

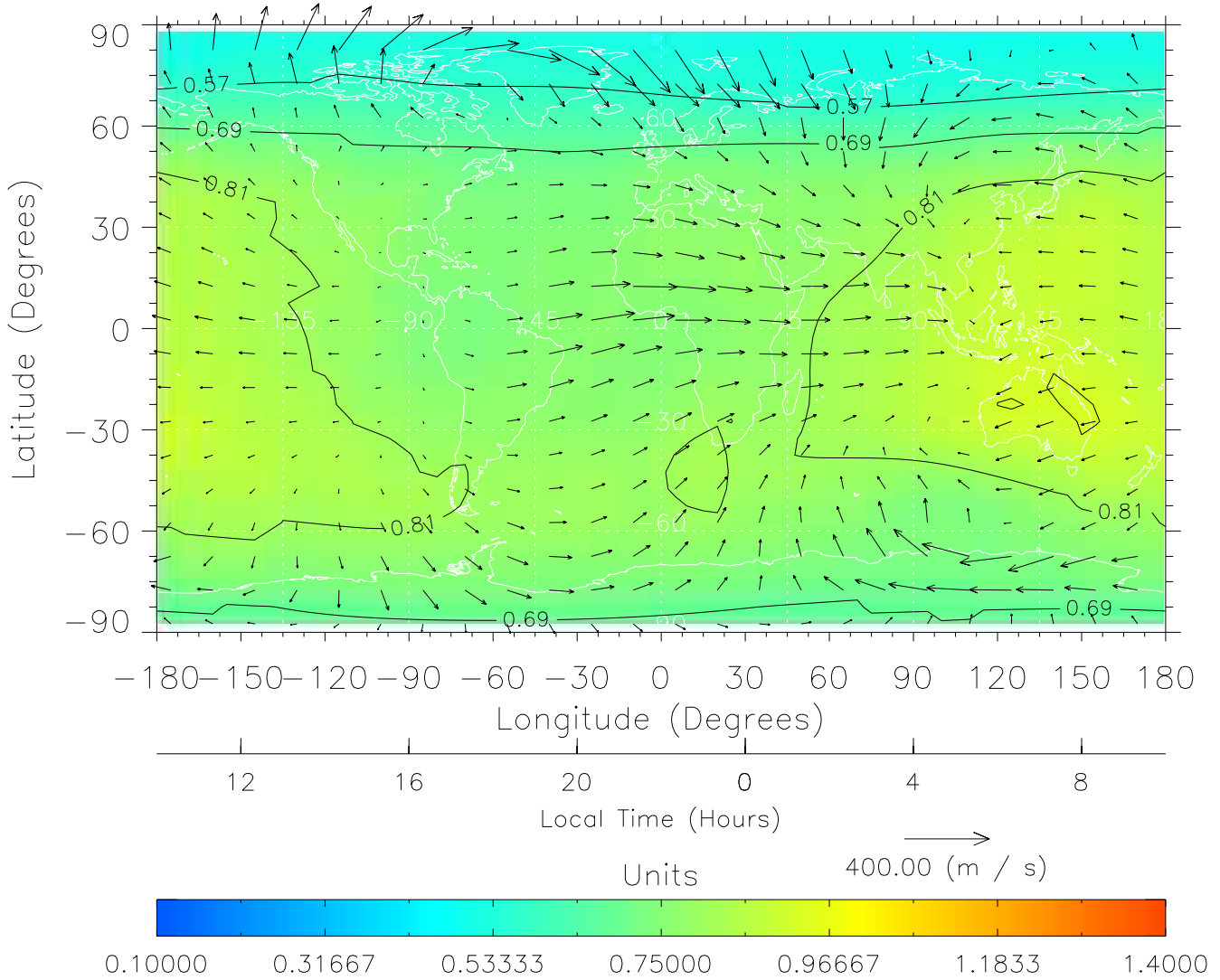
TIME-GCM MAP  $\Sigma O/N_2$  with Neutral Wind vectors  
ZP = 2.00 UT = 21.00 DOY = 089



Created: Thu Mar 10 14:10:15 2005

From: /tgcm/histories/secondary/March2001/March2001\_v1/089.nc

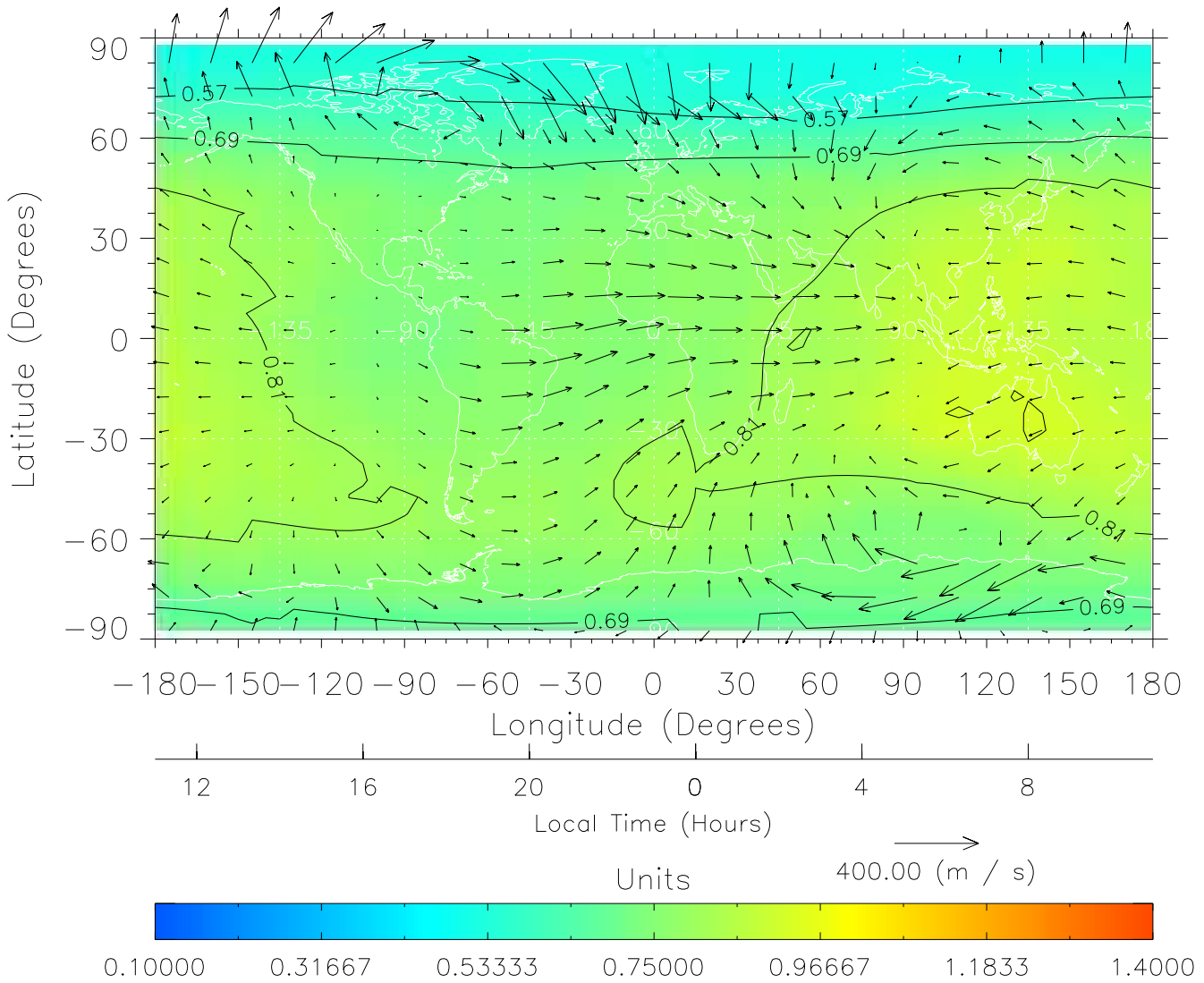
TIME-GCM MAP  $\Sigma O/N_2$  with Neutral Wind vectors  
ZP = 2.00 UT = 22.00 DOY = 089



Created: Thu Mar 10 14:10:16 2005

From: /tgcm/histories/secondary/March2001/March2001\_v1/089.nc

TIME-GCM MAP  $\Sigma O/N_2$  with Neutral Wind vectors  
ZP = 2.00 UT = 23.00 DOY = 089



Created: Thu Mar 10 14:10:16 2005

From: /tgcm/histories/secondary/March2001/March2001\_v1/089.nc