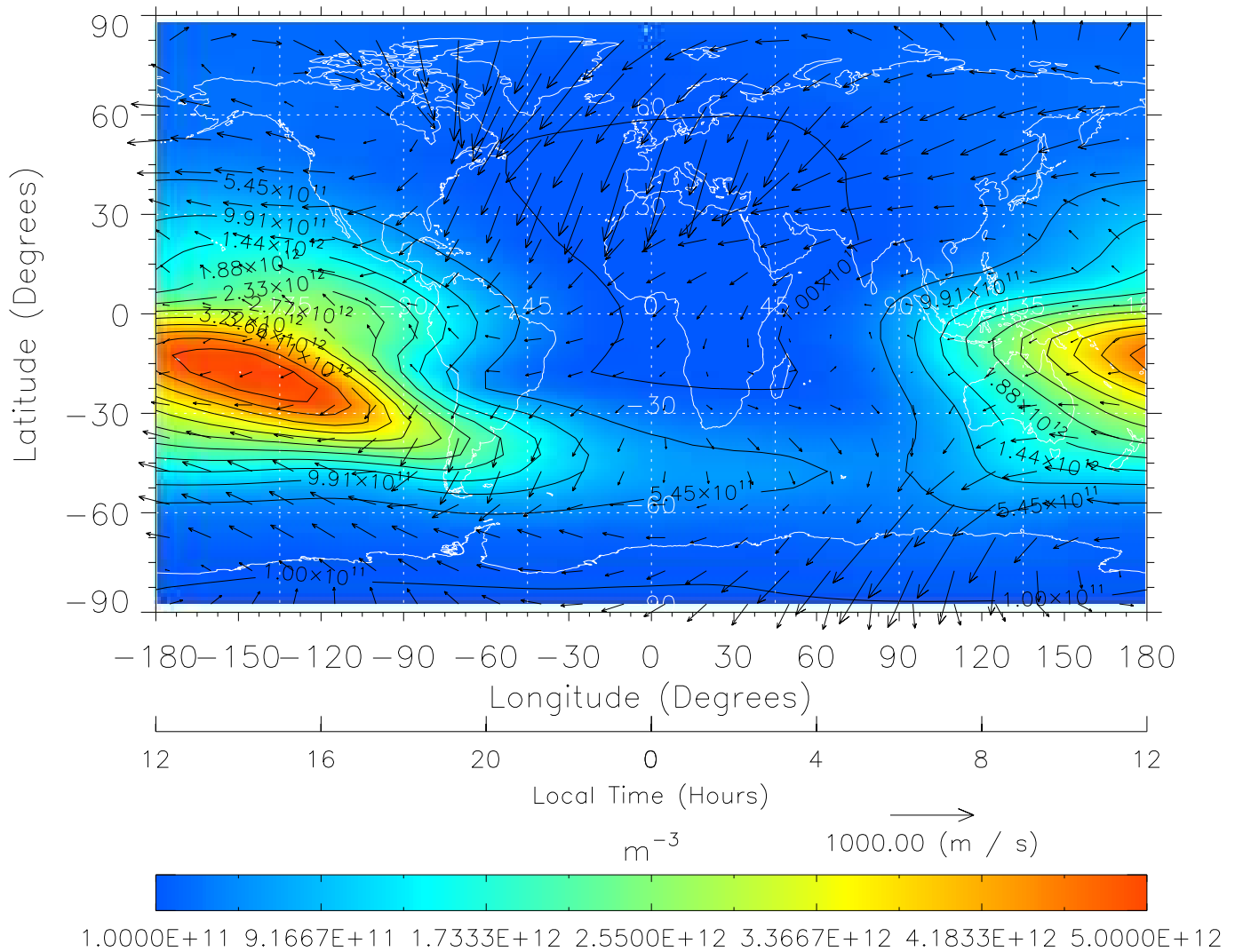


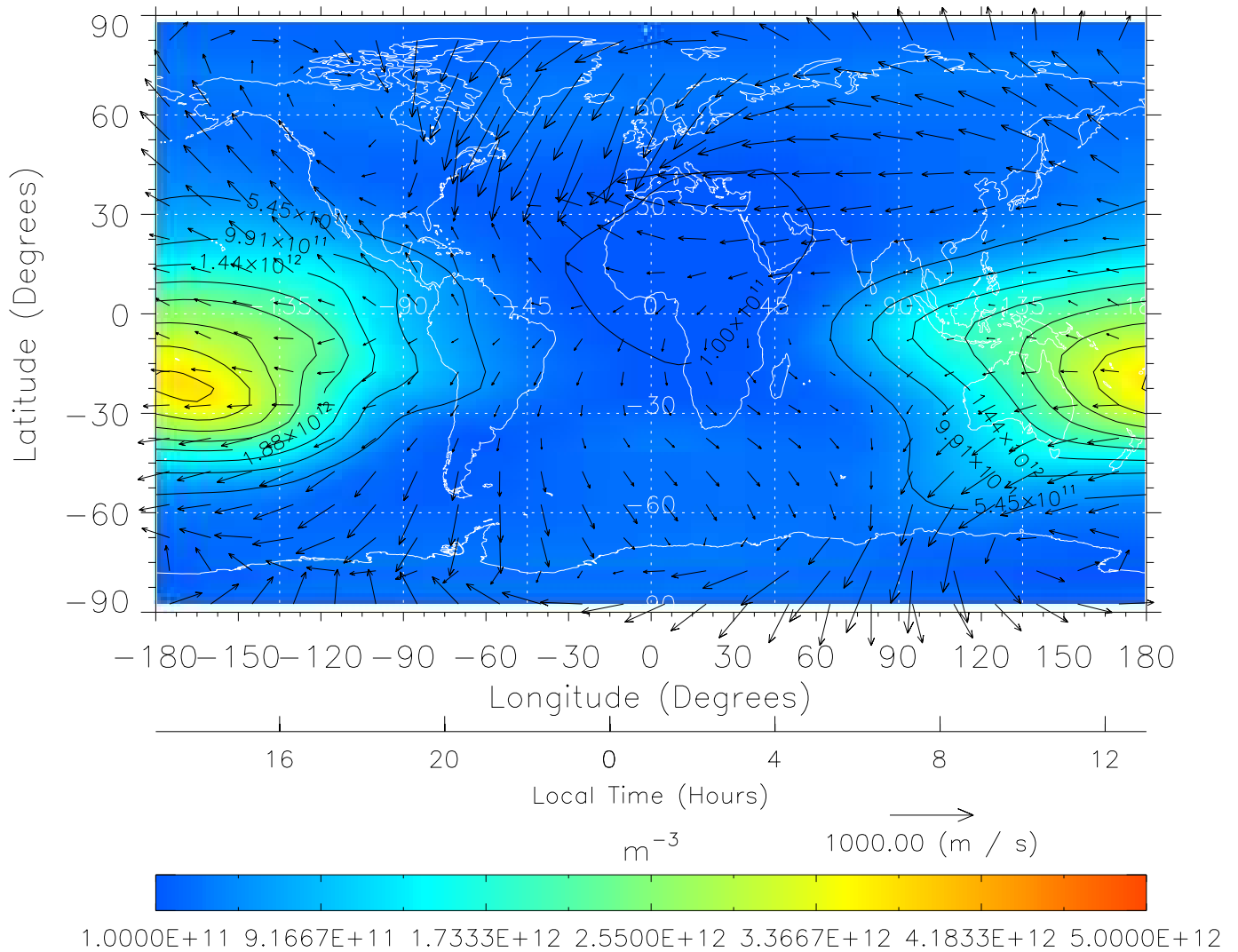
TIME-GCM MAP NmF2 with Neutral Wind vectors
 ZP = 2.00 UT = 0.00 DOY = 198



Created: Thu Mar 10 14:07:59 2005

From: /tgcm/histories/secondary/Bastille/Bastille_v1/198.nc

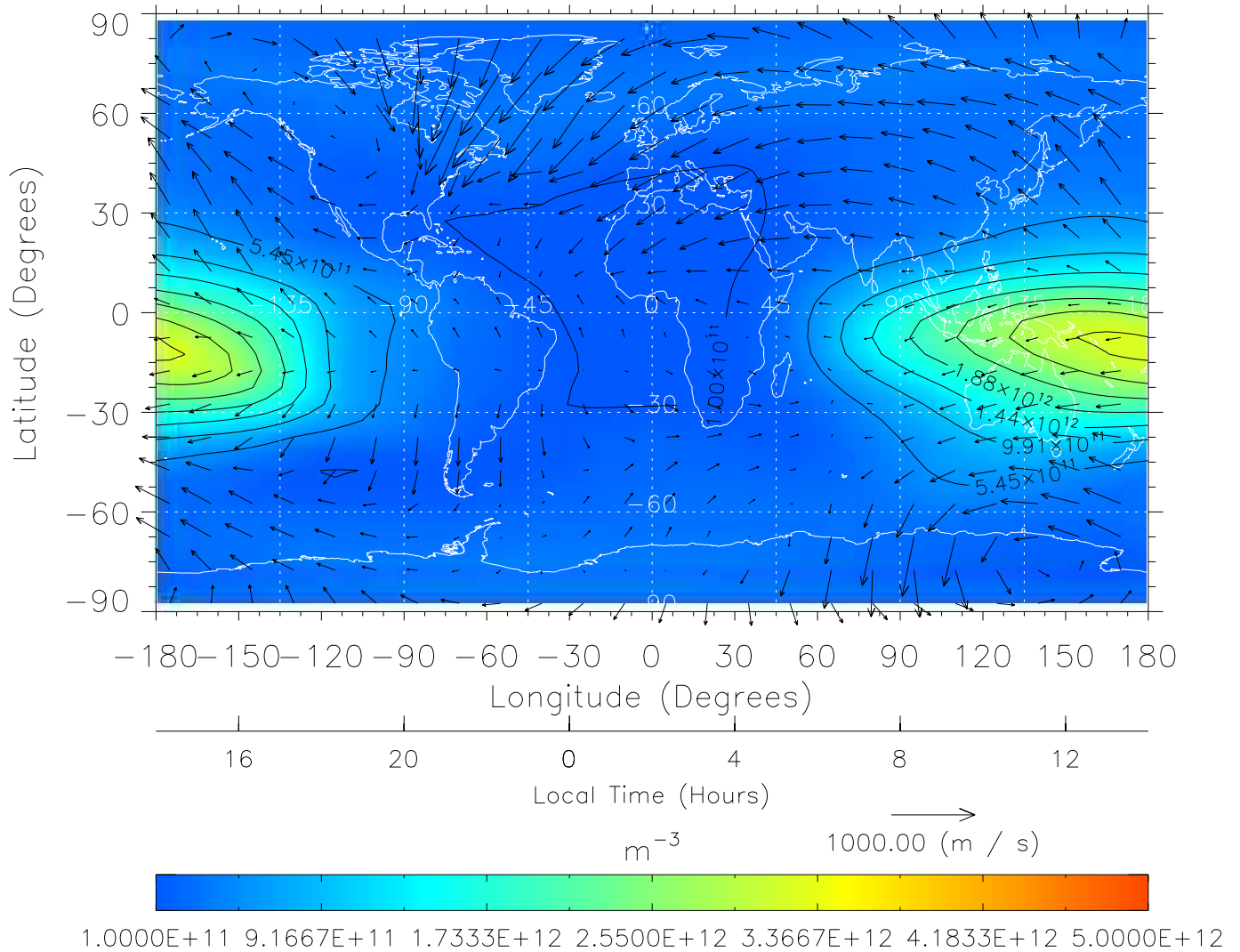
TIME-GCM MAP NmF2 with Neutral Wind vectors
 ZP = 2.00 UT = 1.00 DOY = 198



Created: Thu Mar 10 14:07:59 2005

From: /tgcm/histories/secondary/Bastille/Bastille_v1/198.nc

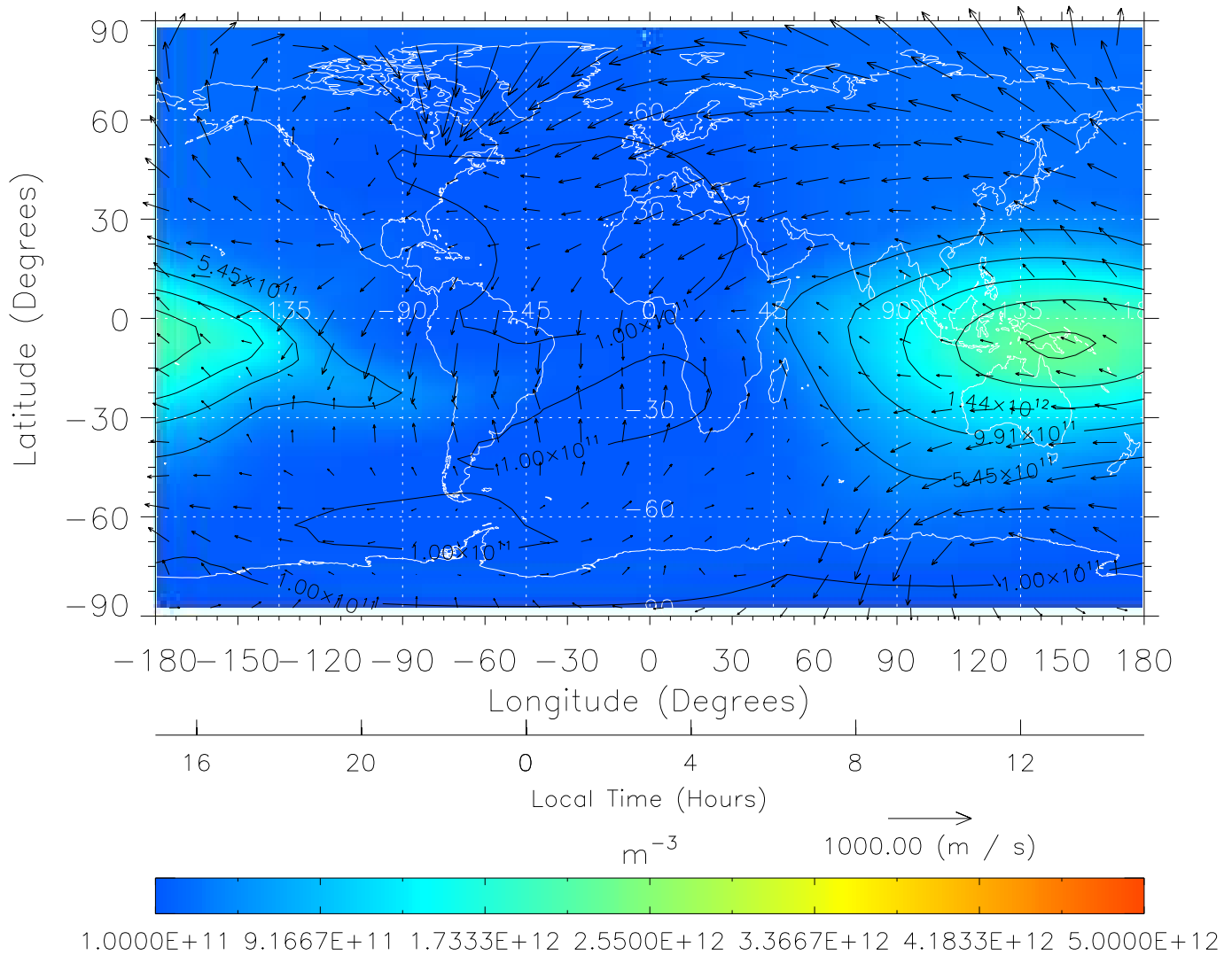
TIME-GCM MAP NmF2 with Neutral Wind vectors
ZP = 2.00 UT = 2.00 DOY = 198



Created: Thu Mar 10 14:08:00 2005

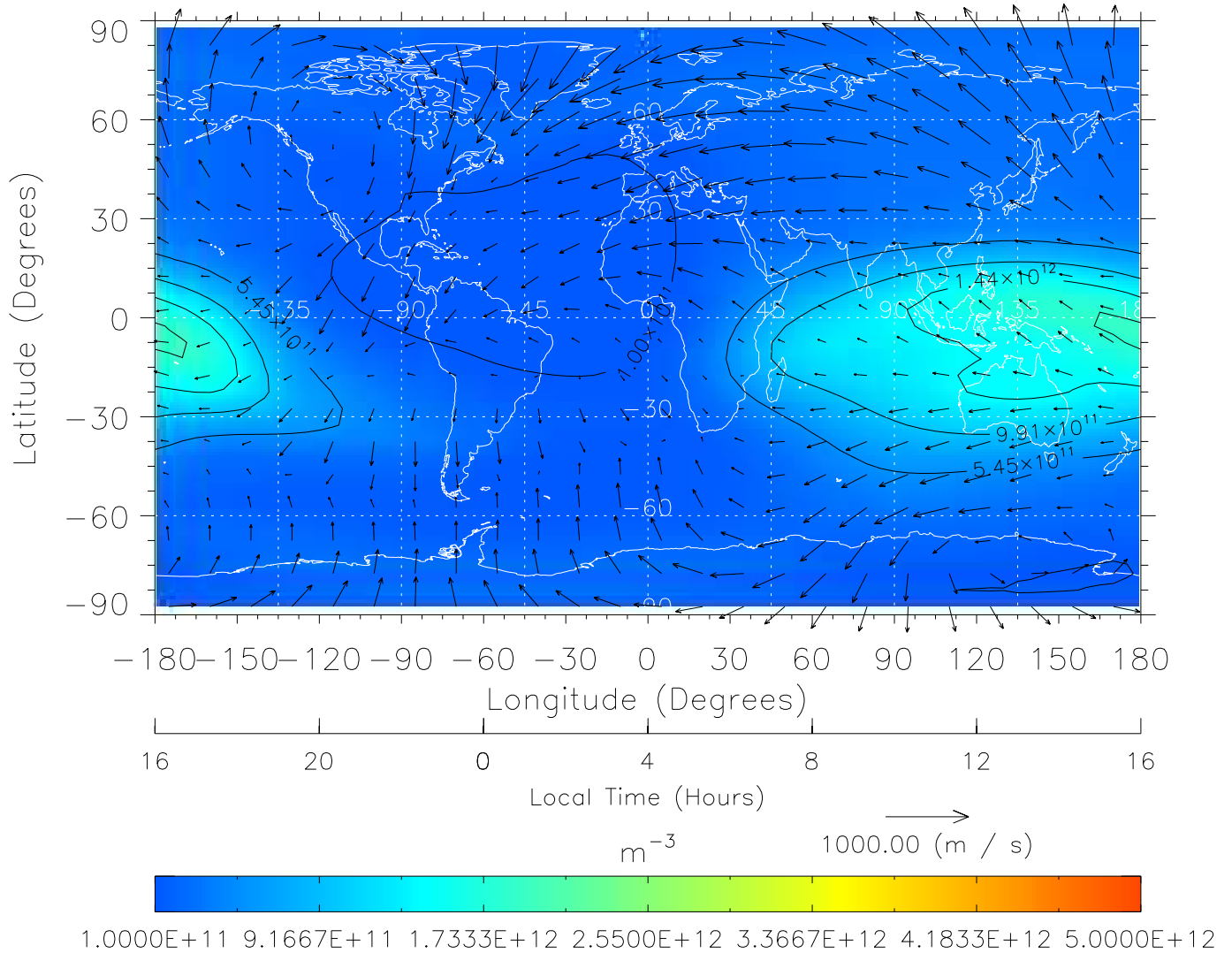
From: /tgcm/histories/secondary/Bastille/Bastille_v1/198.nc

TIME-GCM MAP NmF2 with Neutral Wind vectors
 ZP = 2.00 UT = 3.00 DOY = 198



Created: Thu Mar 10 14:08:00 2005
 From: /tgcm/histories/secondary/Bastille/Bastille_v1/198.nc

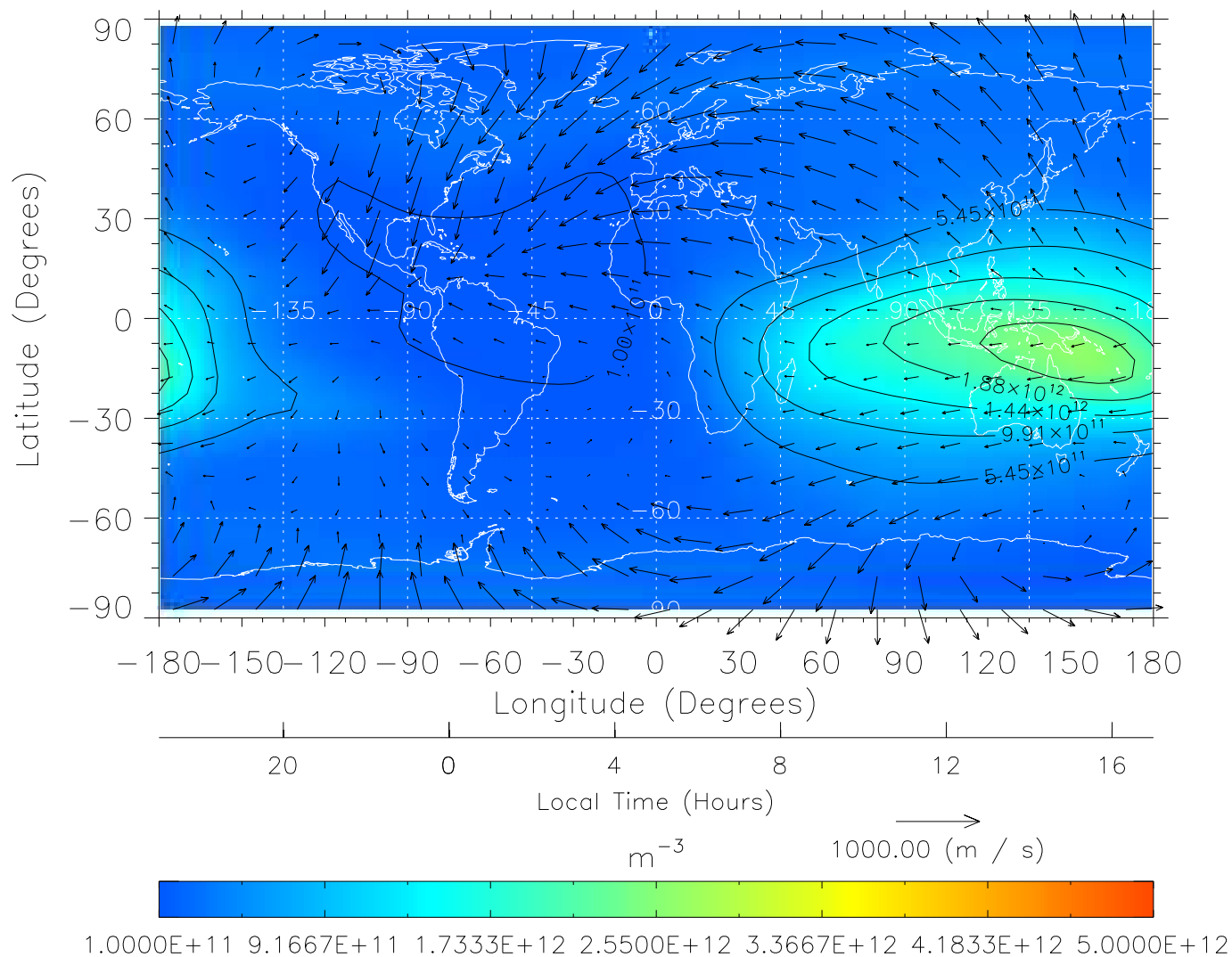
TIME-GCM MAP NmF2 with Neutral Wind vectors
 ZP = 2.00 UT = 4.00 DOY = 198



Created: Thu Mar 10 14:08:01 2005

From: /tgcm/histories/secondary/Bastille/Bastille_v1/198.nc

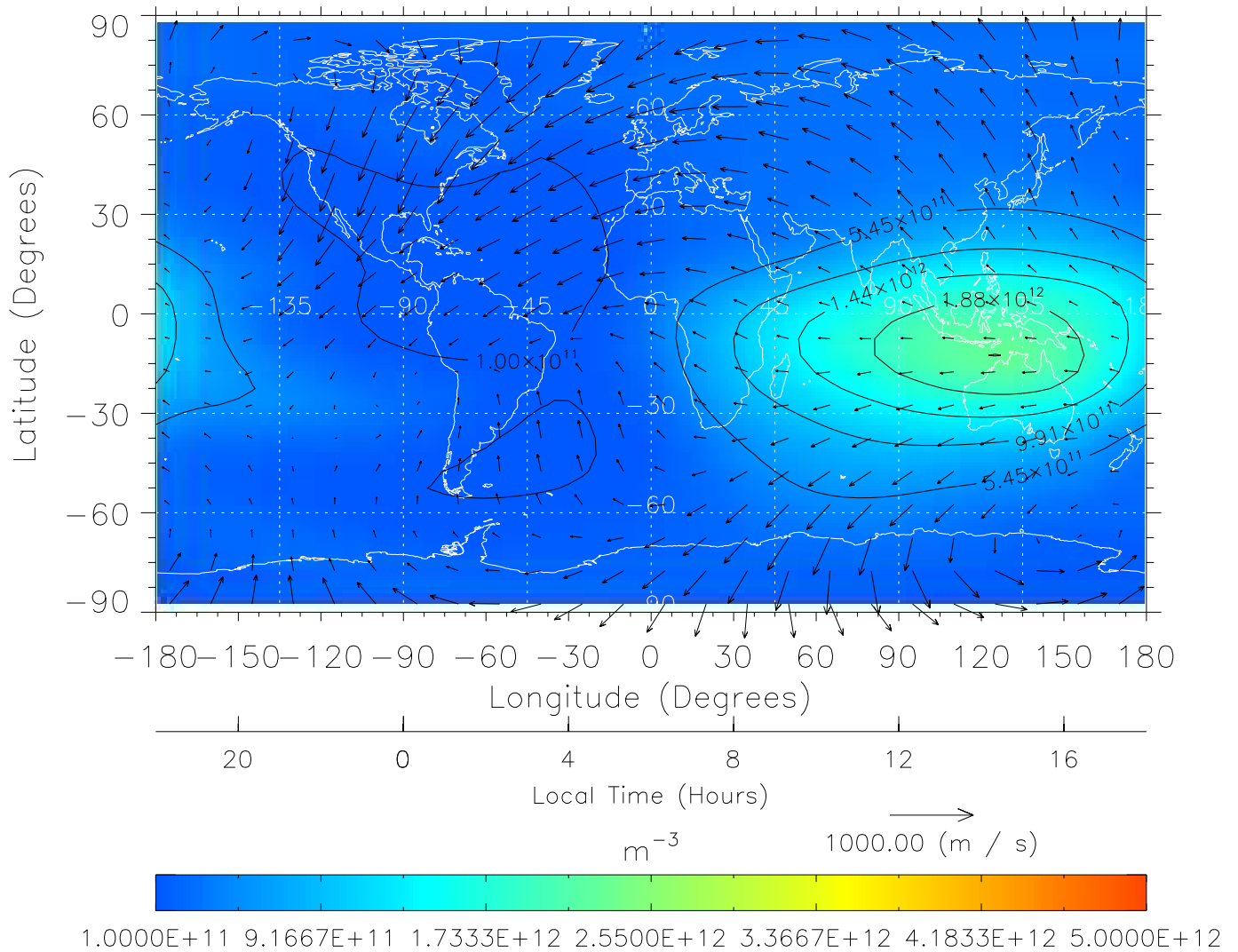
TIME-GCM MAP NmF2 with Neutral Wind vectors
 ZP = 2.00 UT = 5.00 DOY = 198



Created: Thu Mar 10 14:08:01 2005

From: /tgcm/histories/secondary/Bastille/Bastille_v1/198.nc

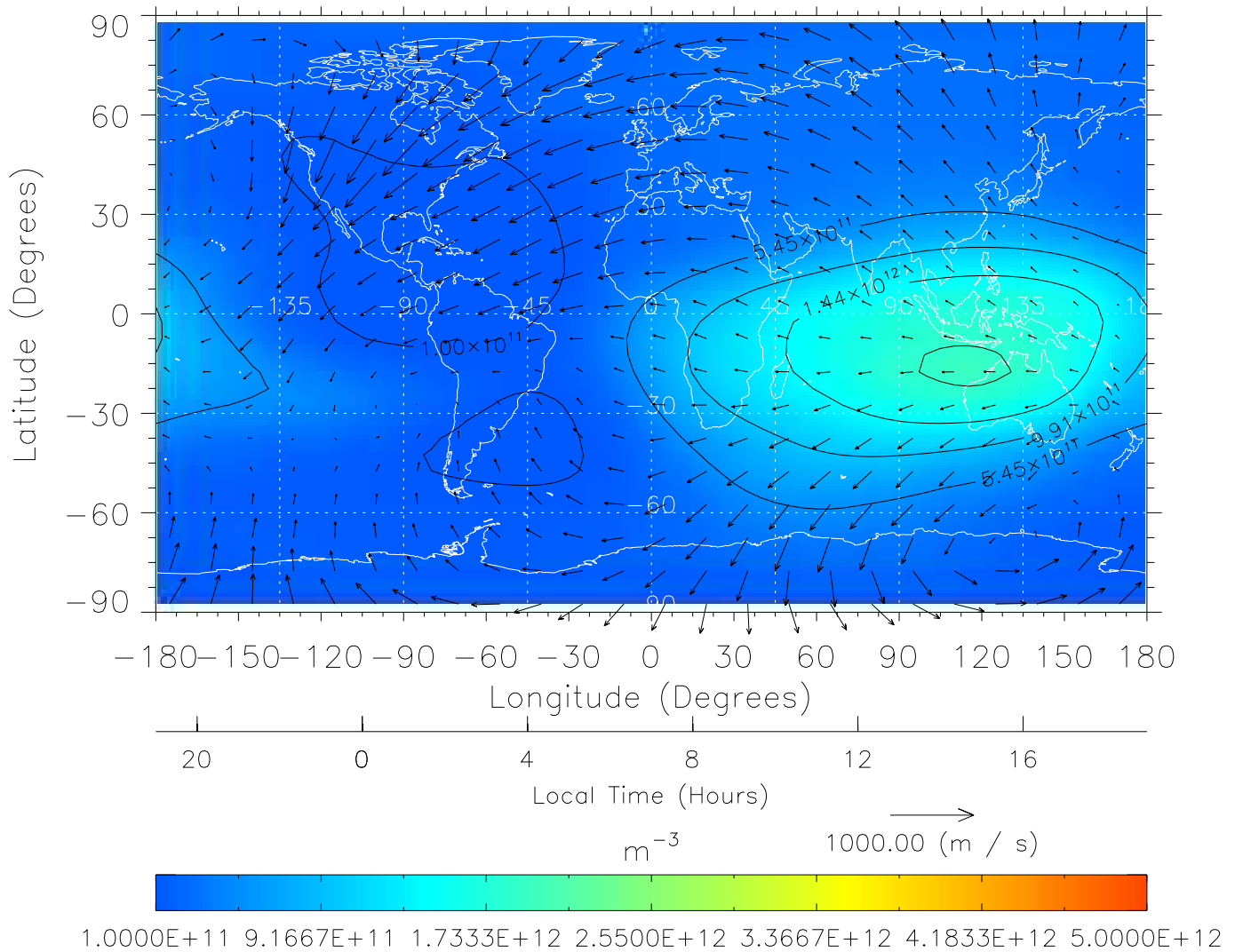
TIME-GCM MAP NmF2 with Neutral Wind vectors
 ZP = 2.00 UT = 6.00 DOY = 198



Created: Thu Mar 10 14:08:02 2005

From: /tgcm/histories/secondary/Bastille/Bastille_v1/198.nc

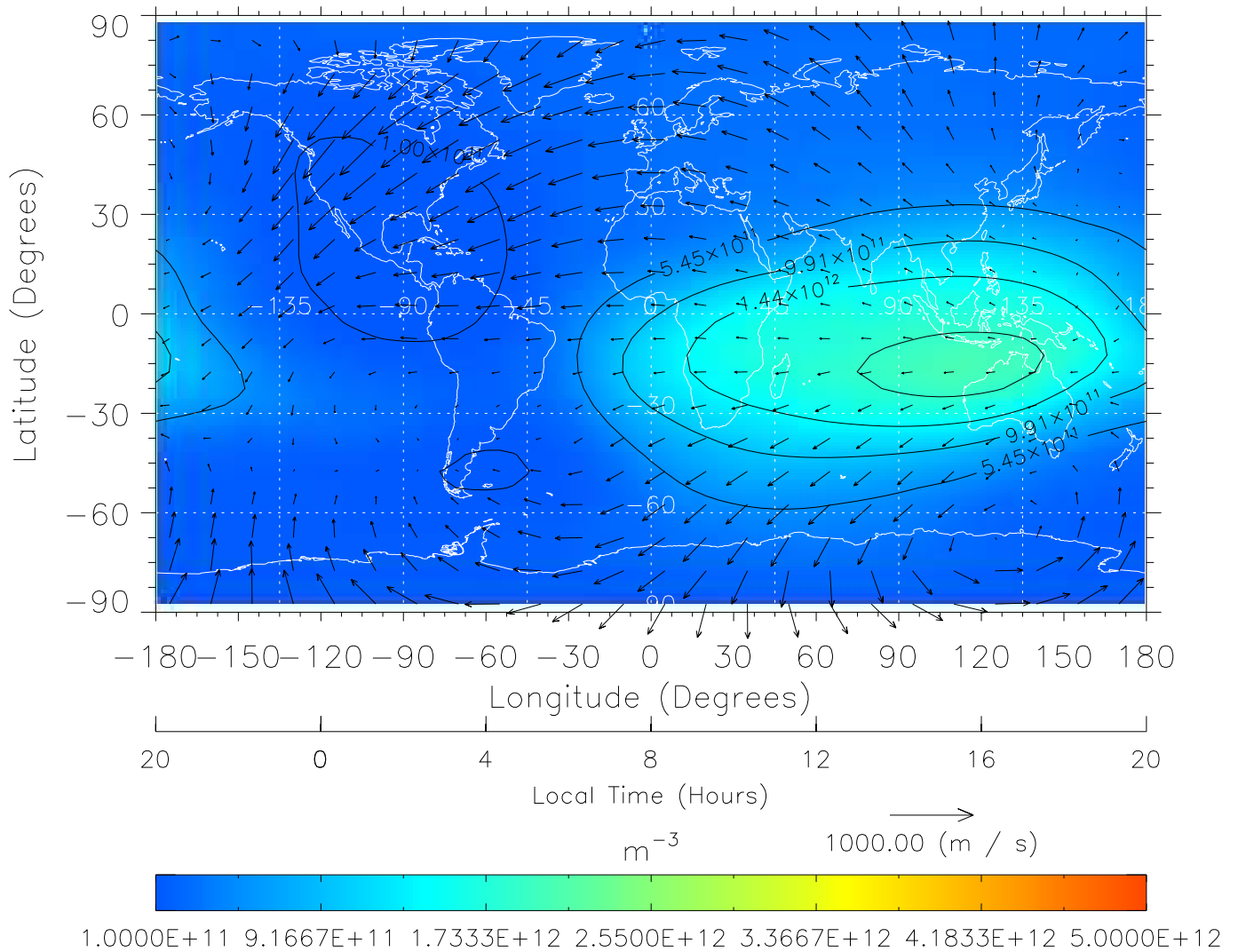
TIME-GCM MAP NmF2 with Neutral Wind vectors
 ZP = 2.00 UT = 7.00 DOY = 198



Created: Thu Mar 10 14:08:02 2005

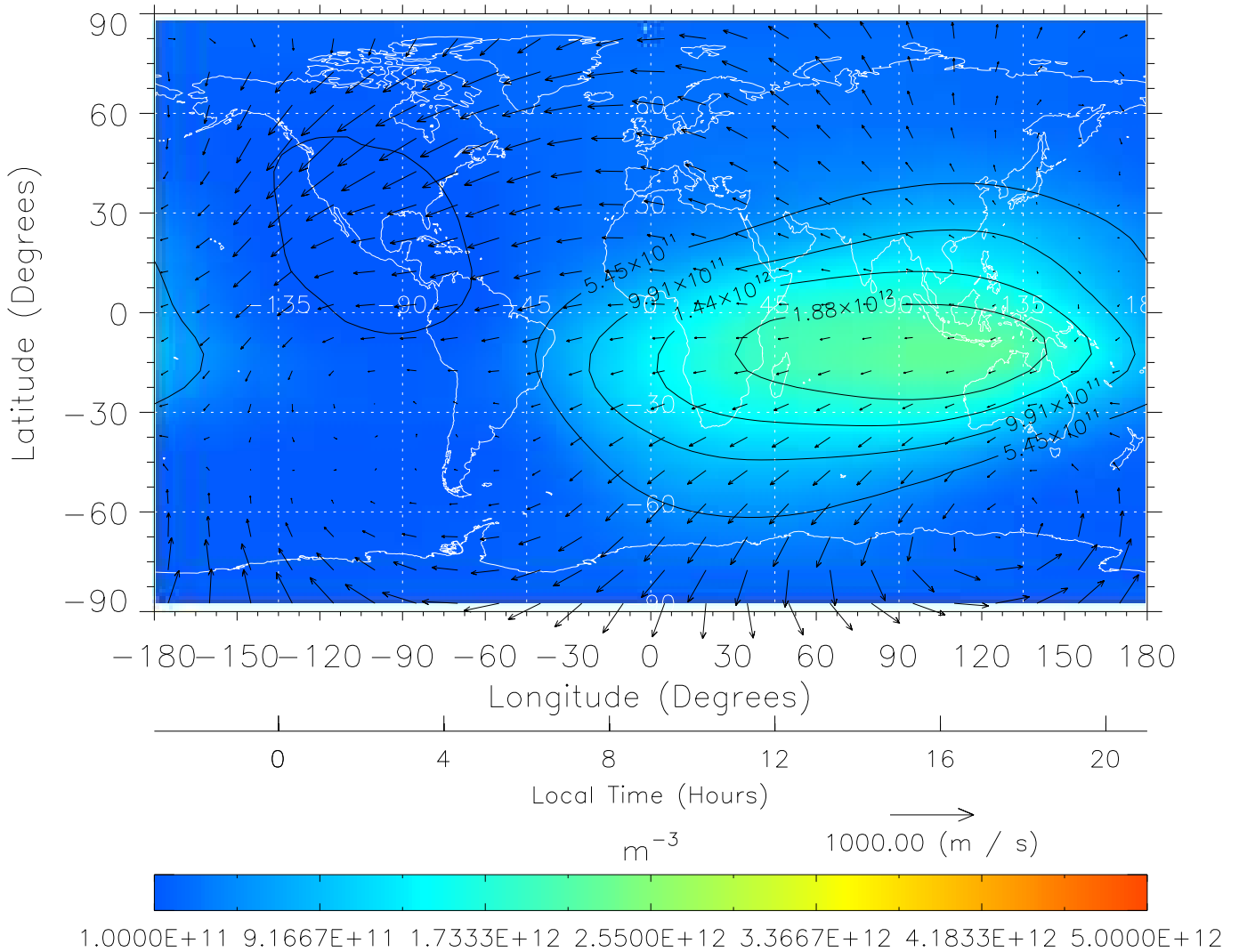
From: /tgcm/histories/secondary/Bastille/Bastille_v1/198.nc

TIME-GCM MAP NmF2 with Neutral Wind vectors
 ZP = 2.00 UT = 8.00 DOY = 198



Created: Thu Mar 10 14:08:03 2005
 From: /tgcm/histories/secondary/Bastille/Bastille_v1/198.nc

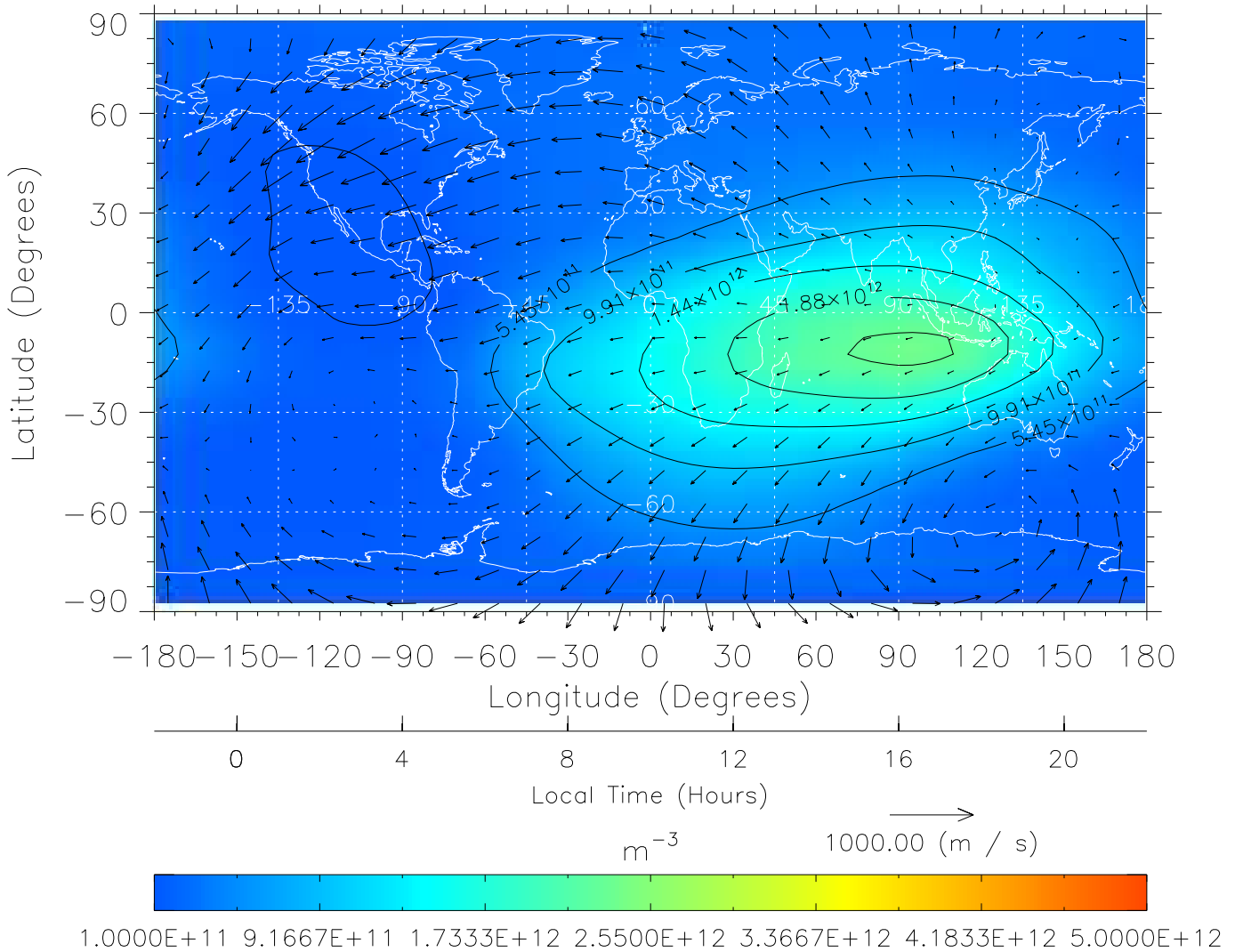
TIME-GCM MAP NmF2 with Neutral Wind vectors
 ZP = 2.00 UT = 9.00 DOY = 198



Created: Thu Mar 10 14:08:03 2005

From: /tgcm/histories/secondary/Bastille/Bastille_v1/198.nc

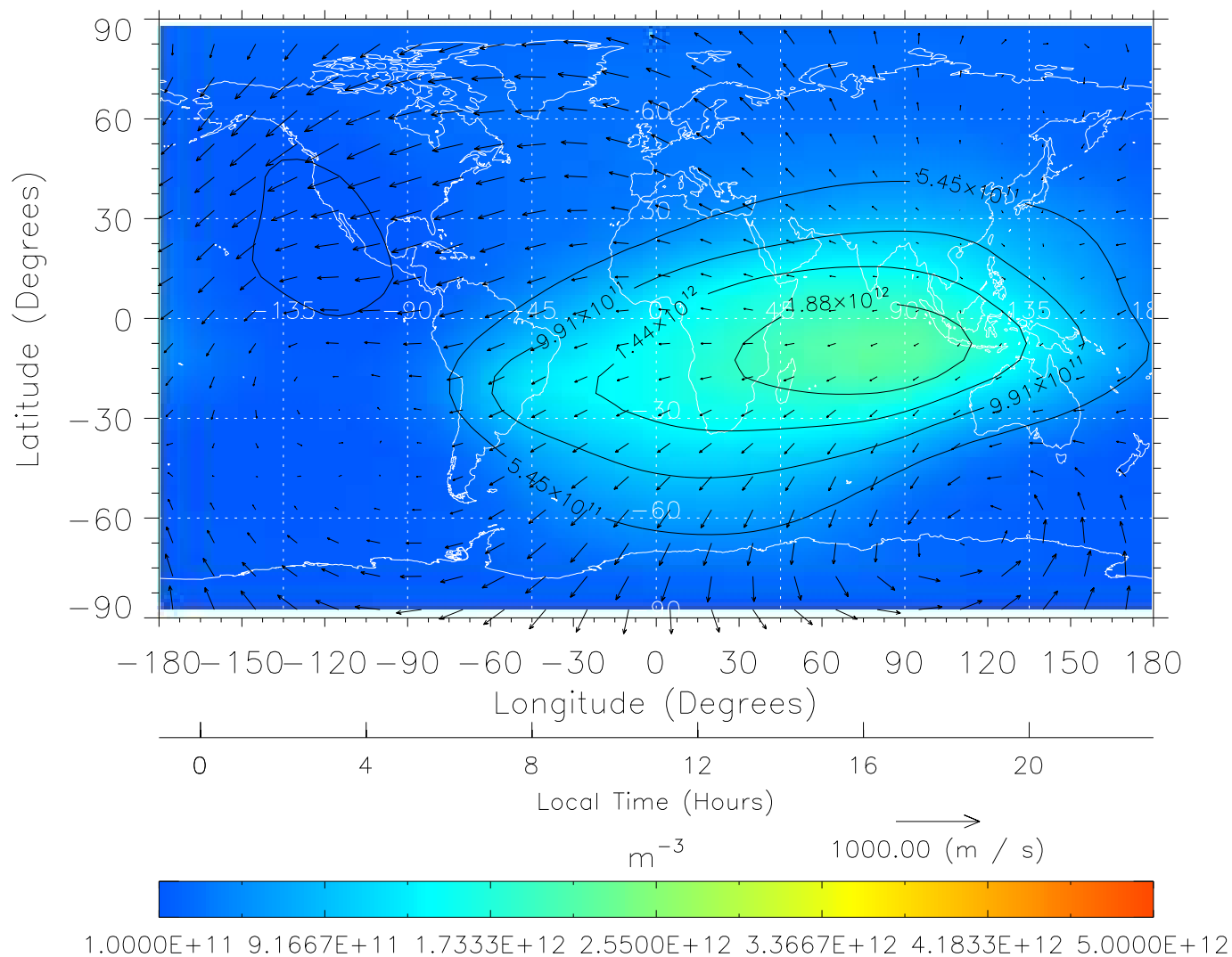
TIME-GCM MAP NmF2 with Neutral Wind vectors
 ZP = 2.00 UT = 10.00 DOY = 198



Created: Thu Mar 10 14:08:04 2005

From: /tgcm/histories/secondary/Bastille/Bastille_v1/198.nc

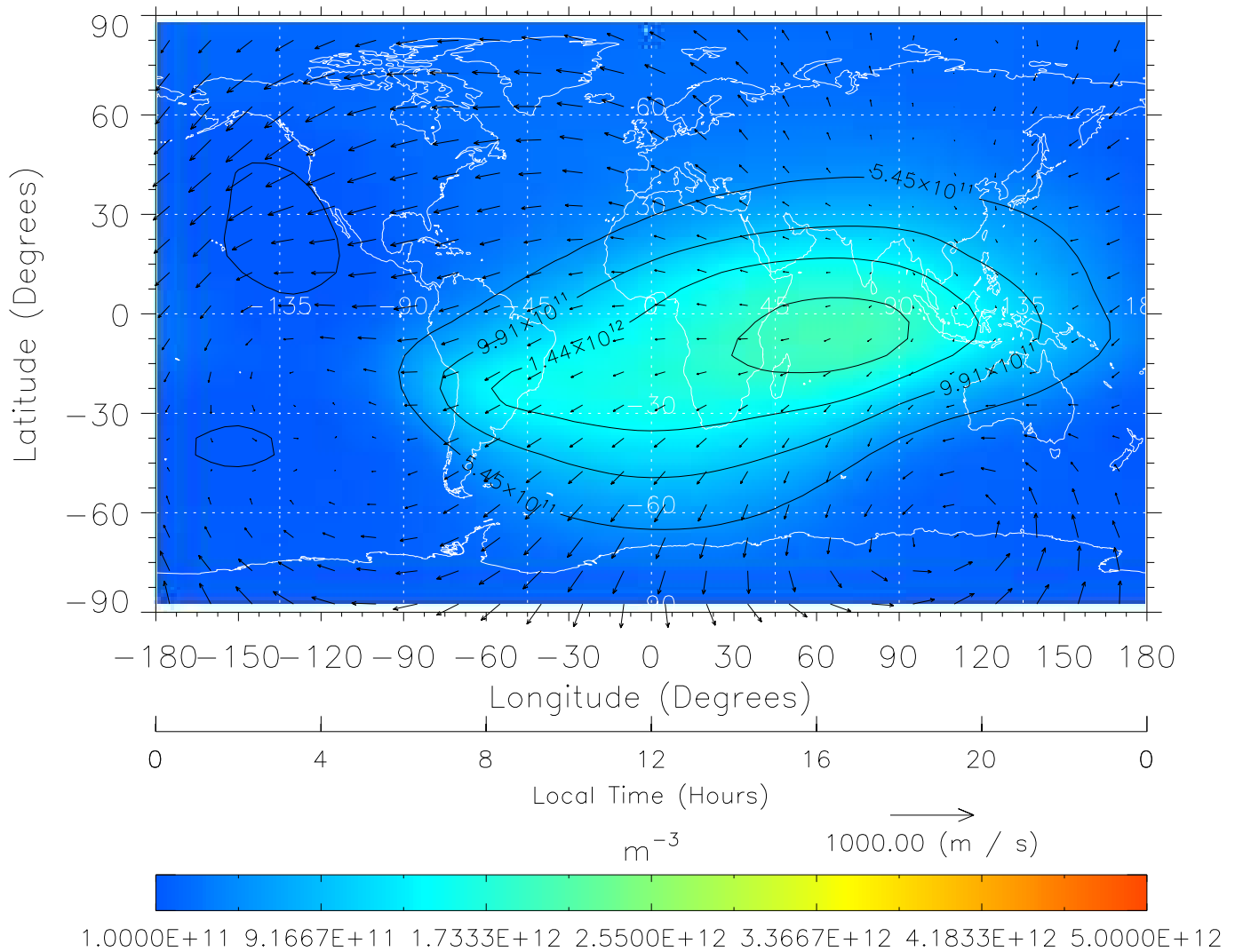
TIME-GCM MAP NmF2 with Neutral Wind vectors
 ZP = 2.00 UT = 11.00 DOY = 198



Created: Thu Mar 10 14:08:04 2005

From: /tgcm/histories/secondary/Bastille/Bastille_v1/198.nc

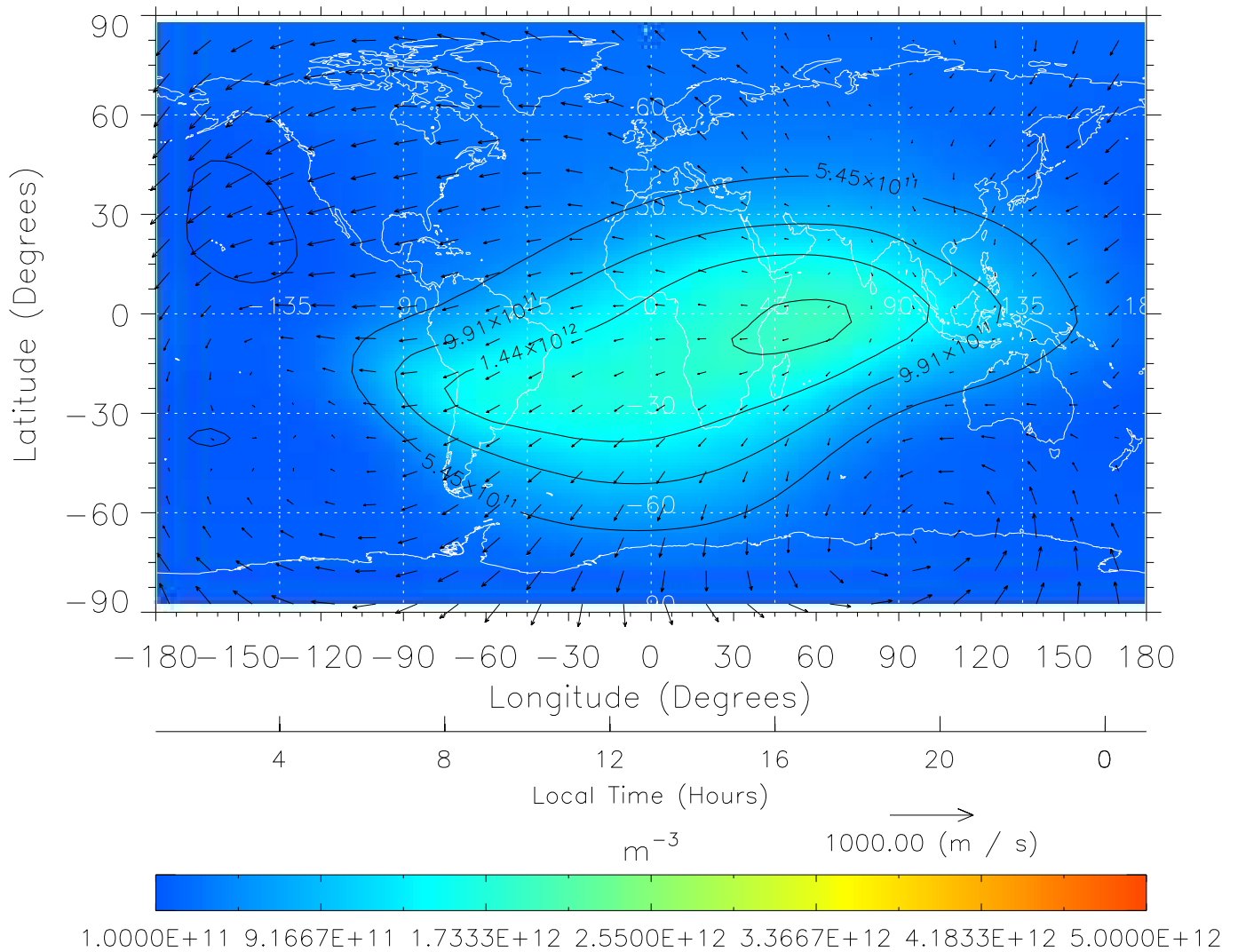
TIME-GCM MAP NmF2 with Neutral Wind vectors
 ZP = 2.00 UT = 12.00 DOY = 198



Created: Thu Mar 10 14:08:04 2005

From: /tgcm/histories/secondary/Bastille/Bastille_v1/198.nc

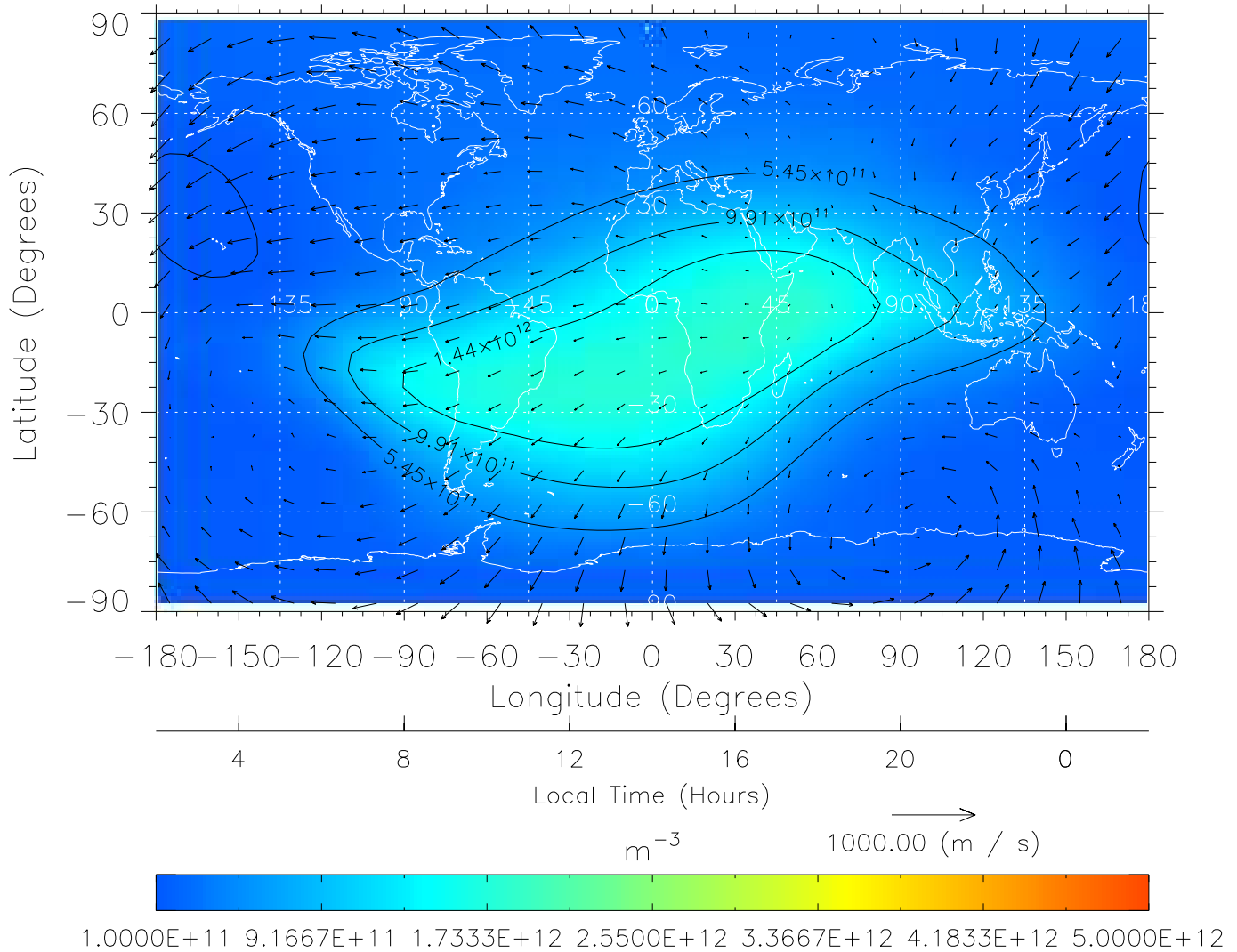
TIME-GCM MAP NmF2 with Neutral Wind vectors
 ZP = 2.00 UT = 13.00 DOY = 198



Created: Thu Mar 10 14:08:05 2005

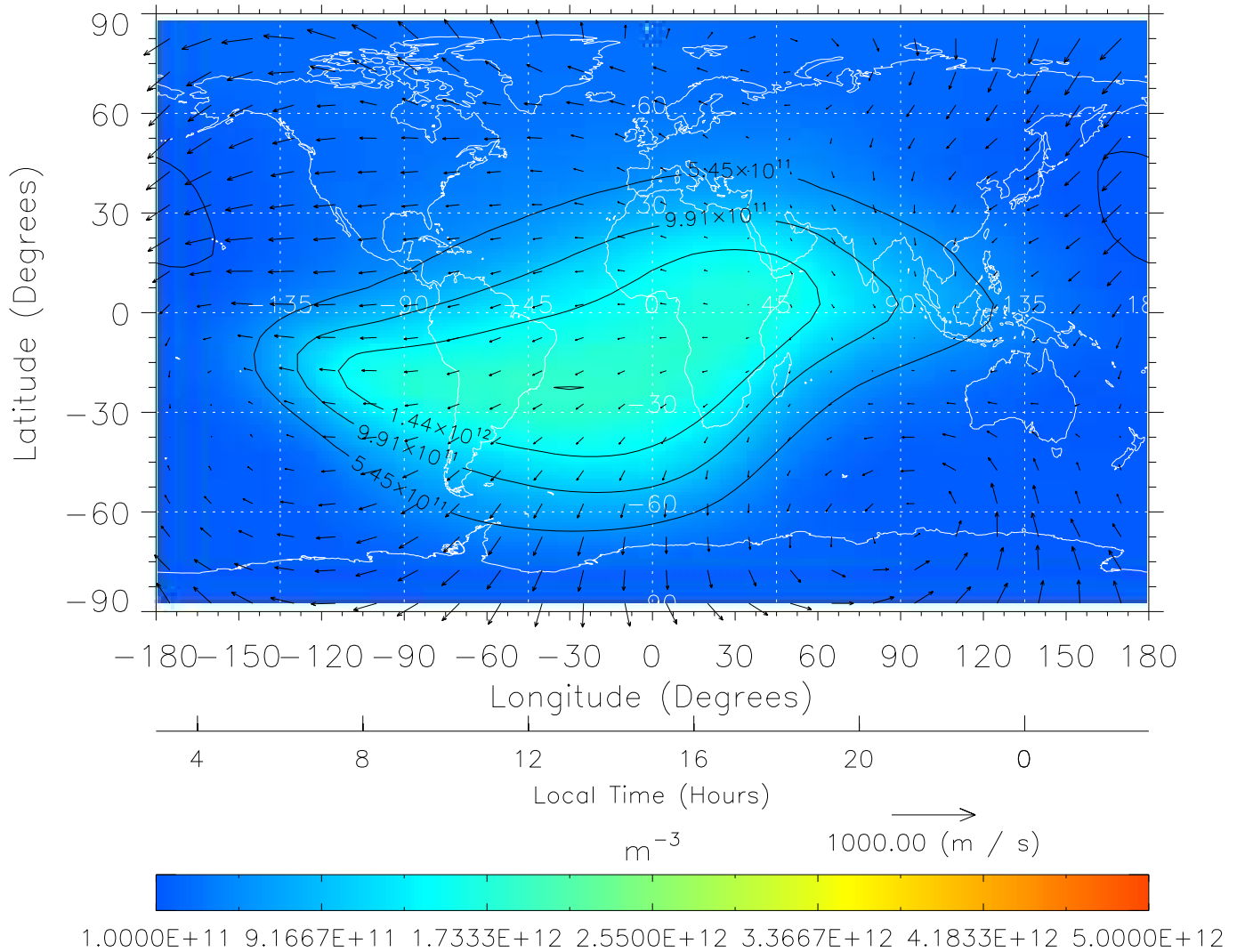
From: /tgcm/histories/secondary/Bastille/Bastille_v1/198.nc

TIME-GCM MAP NmF2 with Neutral Wind vectors
 ZP = 2.00 UT = 14.00 DOY = 198



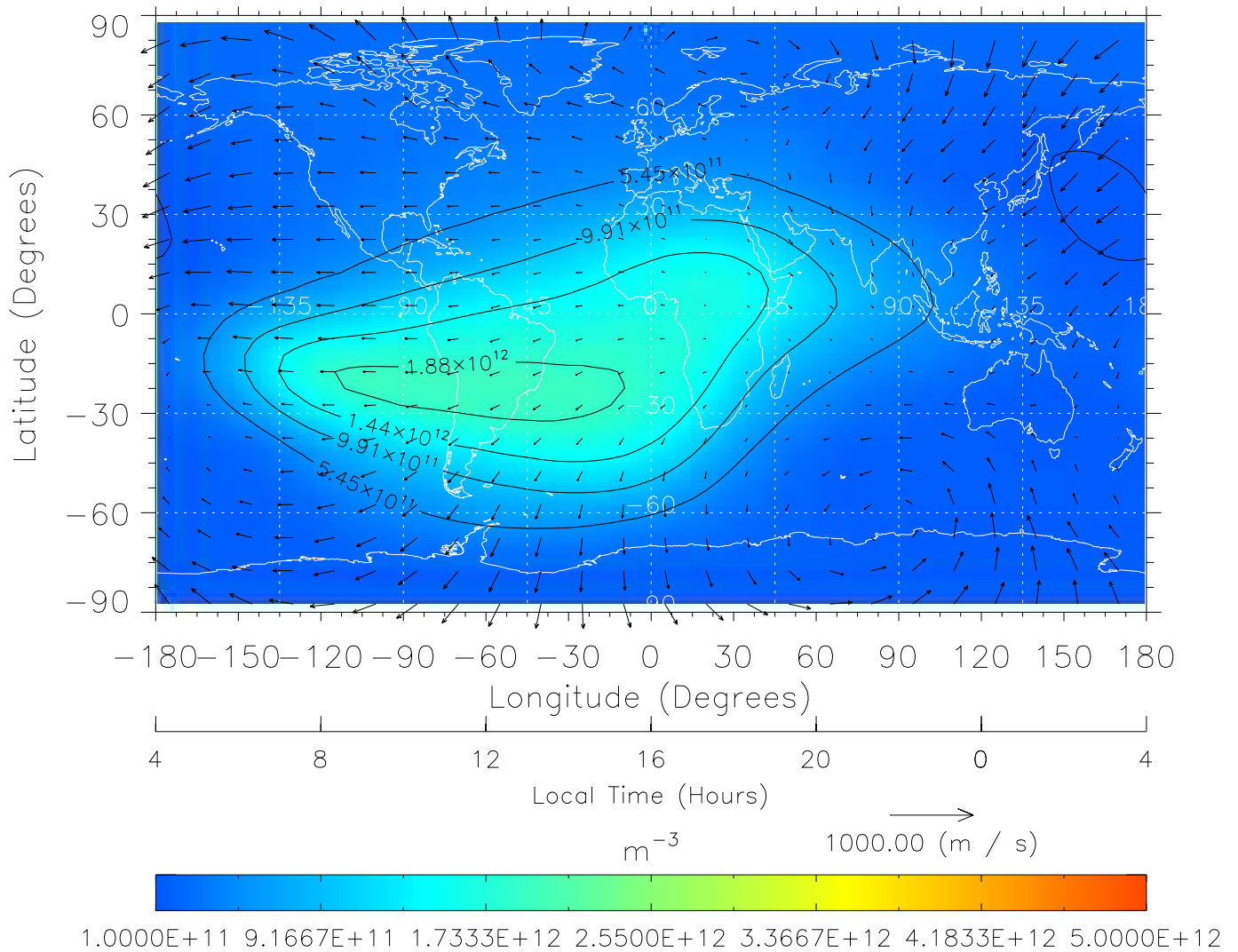
Created: Thu Mar 10 14:08:05 2005
 From: /tgcm/histories/secondary/Bastille/Bastille_v1/198.nc

TIME-GCM MAP NmF2 with Neutral Wind vectors
 ZP = 2.00 UT = 15.00 DOY = 198



Created: Thu Mar 10 14:08:06 2005
 From: /tgcm/histories/secondary/Bastille/Bastille_v1/198.nc

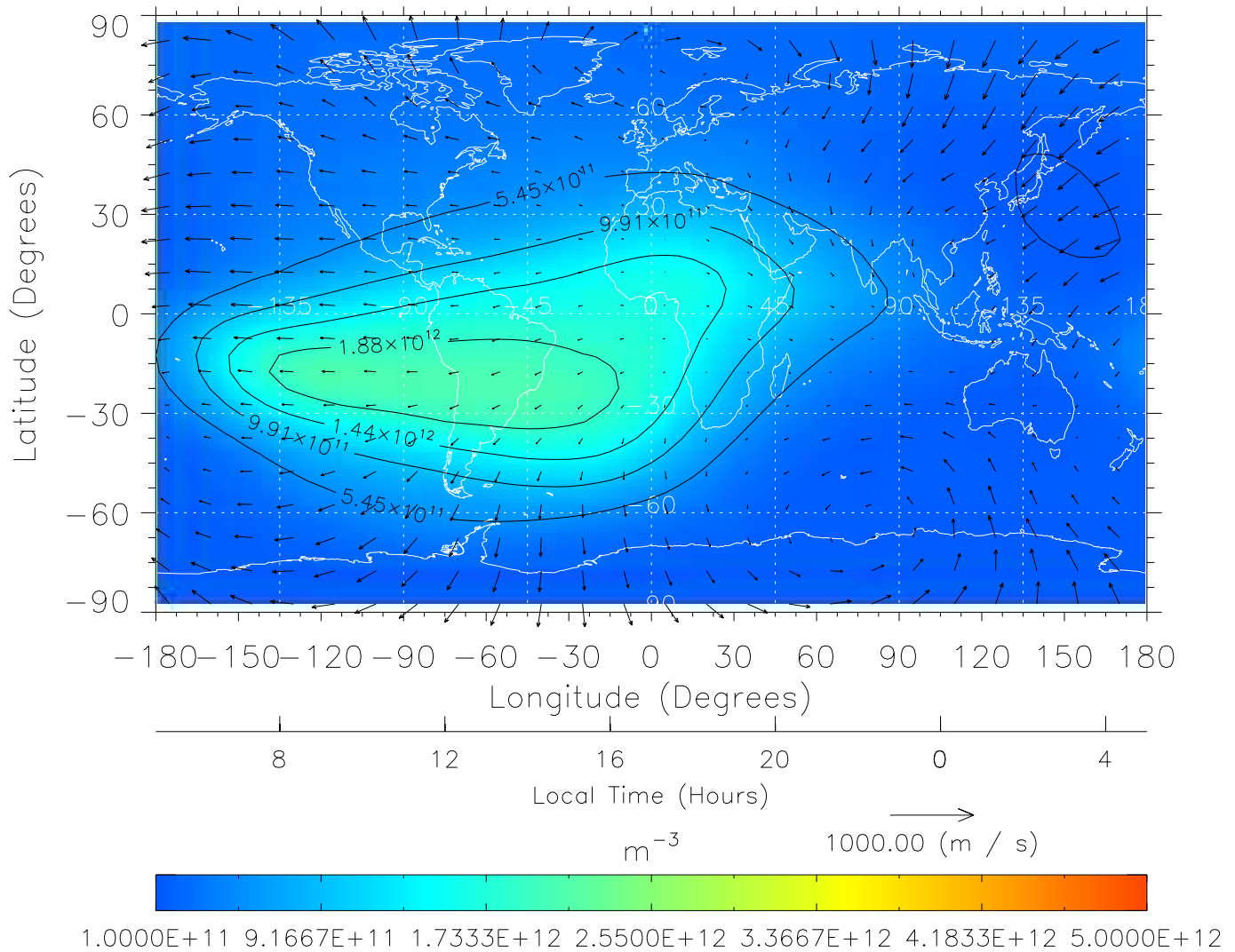
TIME-GCM MAP NmF2 with Neutral Wind vectors
 ZP = 2.00 UT = 16.00 DOY = 198



Created: Thu Mar 10 14:08:06 2005

From: /tgcm/histories/secondary/Bastille/Bastille_v1/198.nc

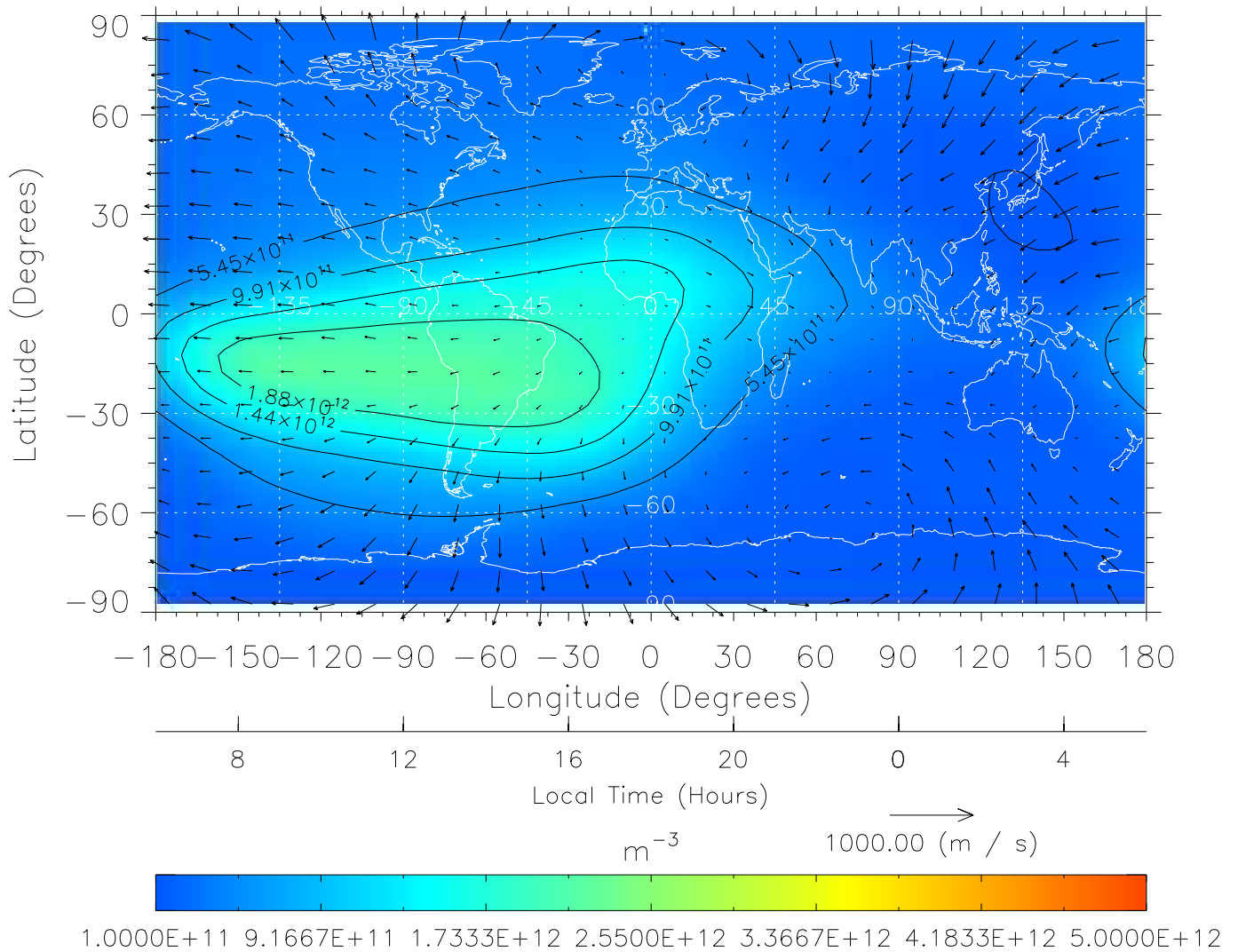
TIME-GCM MAP NmF2 with Neutral Wind vectors
 ZP = 2.00 UT = 17.00 DOY = 198



Created: Thu Mar 10 14:08:07 2005

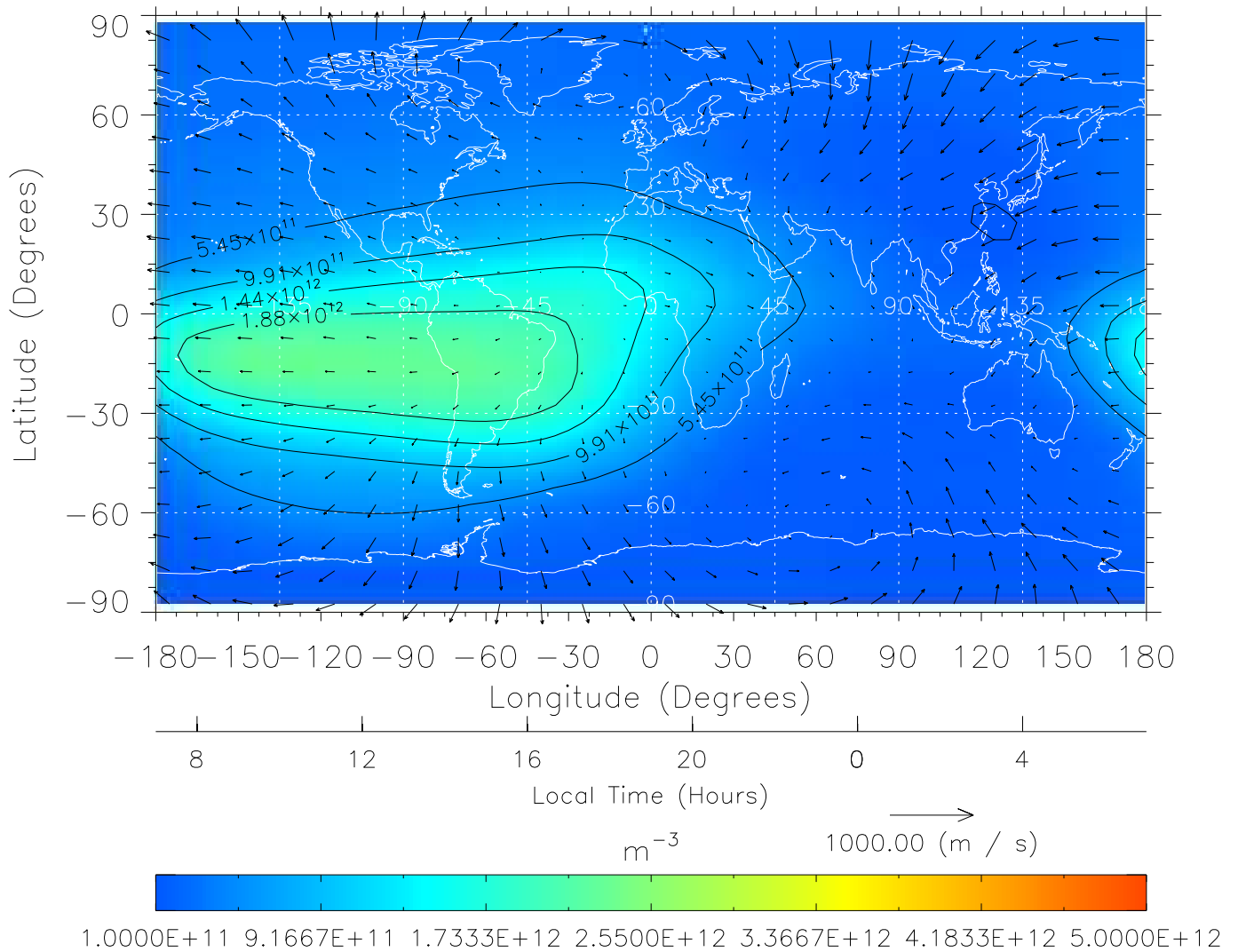
From: /tgcm/histories/secondary/Bastille/Bastille_v1/198.nc

TIME-GCM MAP NmF2 with Neutral Wind vectors
 ZP = 2.00 UT = 18.00 DOY = 198



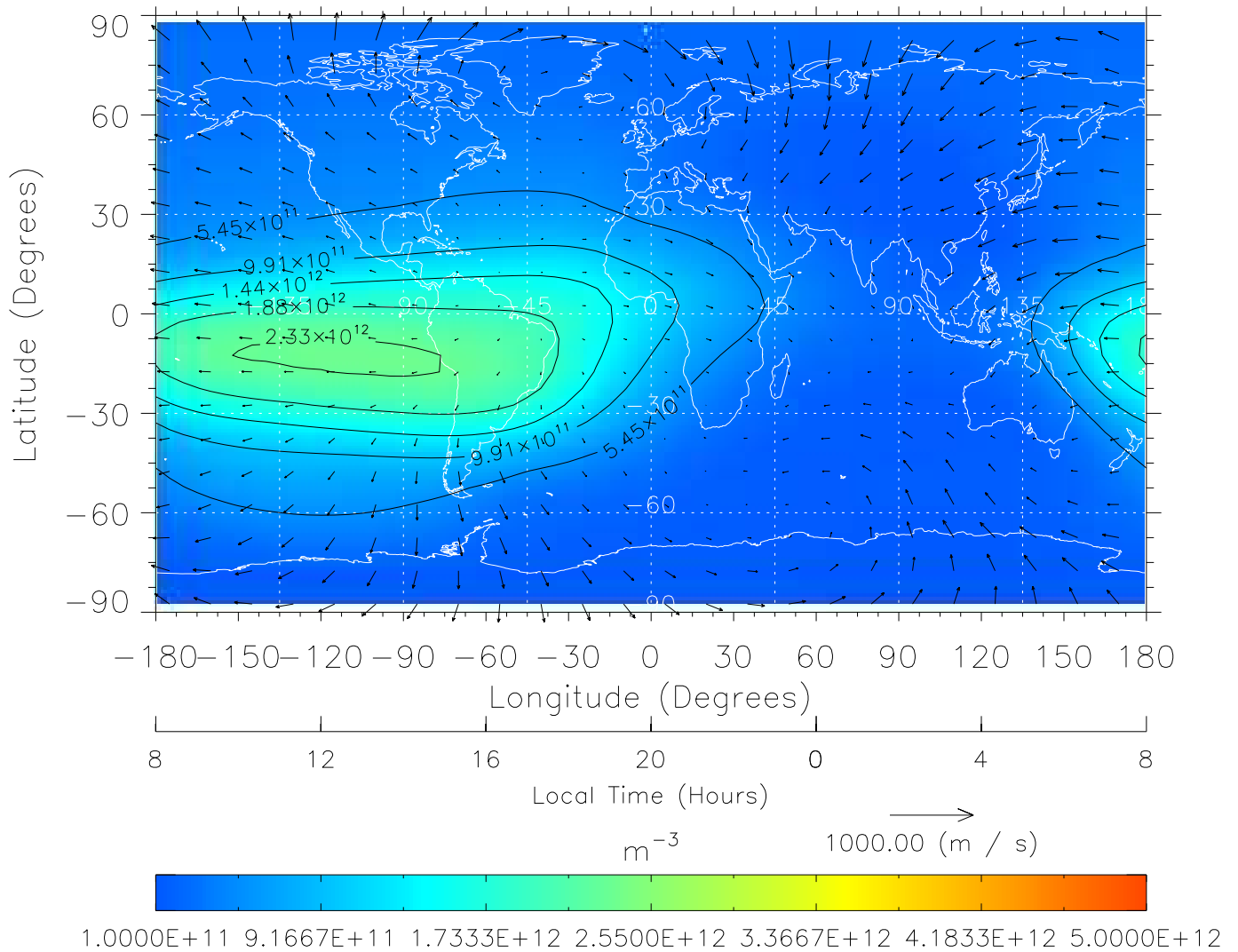
Created: Thu Mar 10 14:08:07 2005
 From: /tgcm/histories/secondary/Bastille/Bastille_v1/198.nc

TIME-GCM MAP NmF2 with Neutral Wind vectors
 ZP = 2.00 UT = 19.00 DOY = 198



Created: Thu Mar 10 14:08:08 2005
 From: /tgcm/histories/secondary/Bastille/Bastille_v1/198.nc

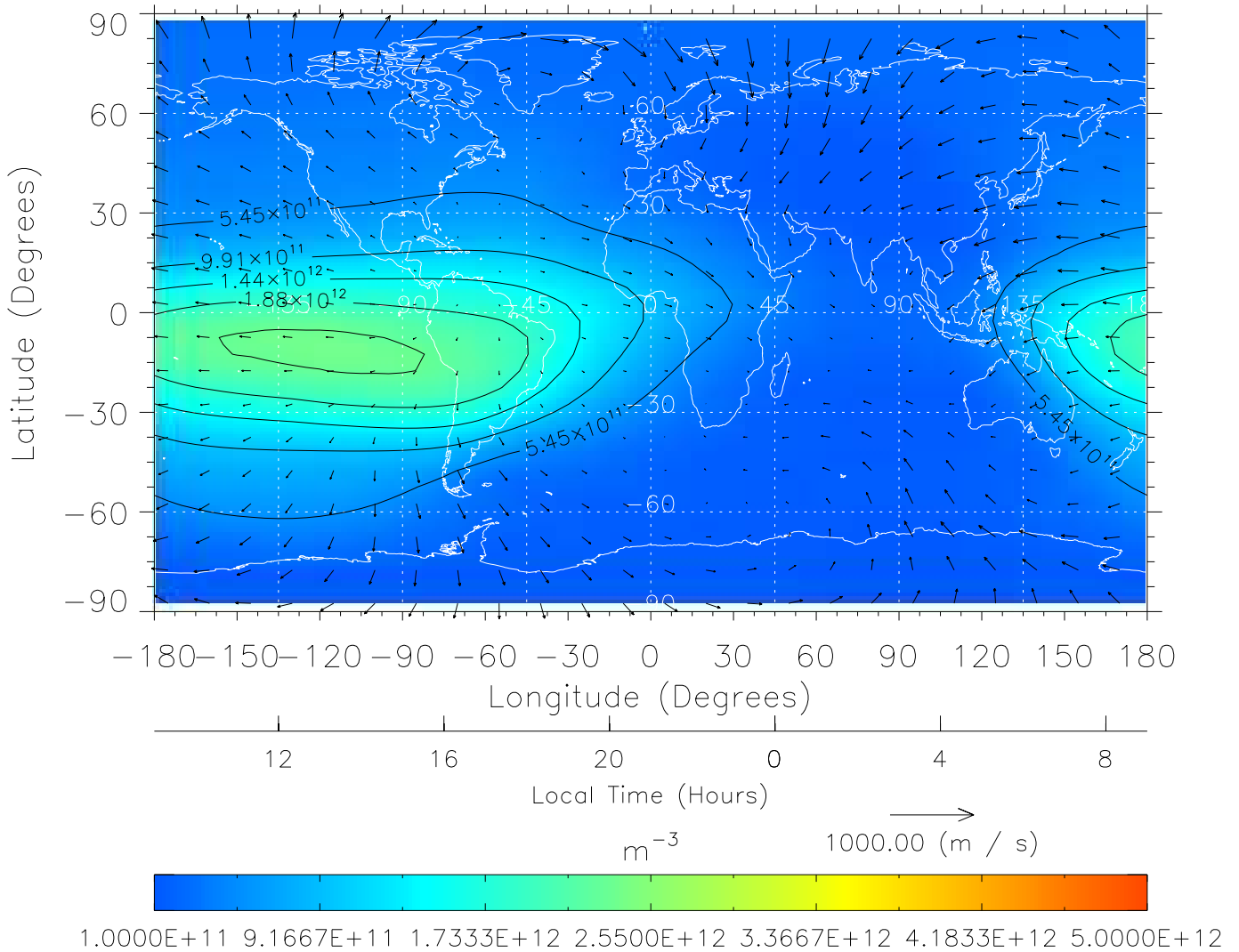
TIME-GCM MAP NmF2 with Neutral Wind vectors
 ZP = 2.00 UT = 20.00 DOY = 198



Created: Thu Mar 10 14:08:08 2005

From: /tgcm/histories/secondary/Bastille/Bastille_v1/198.nc

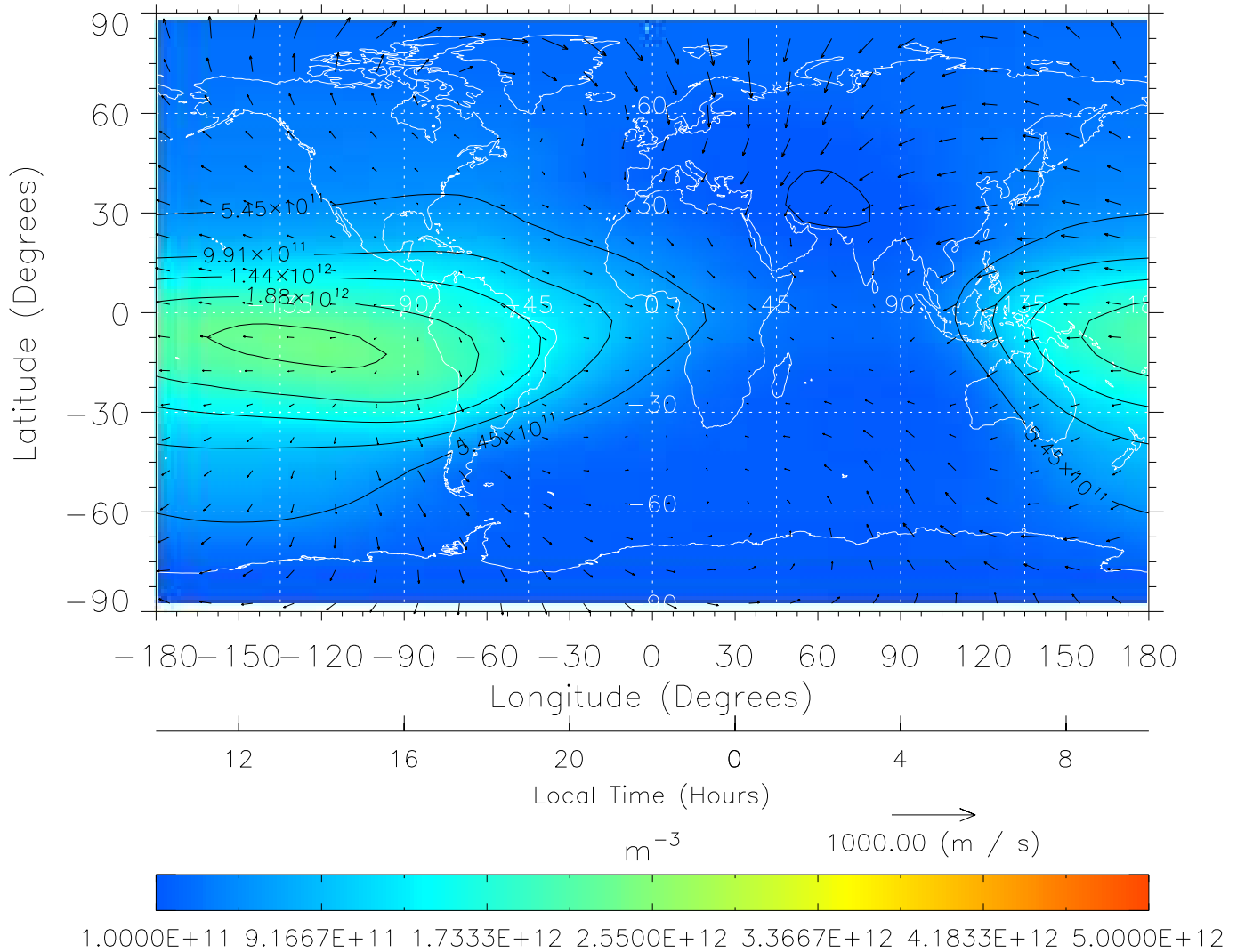
TIME-GCM MAP NmF2 with Neutral Wind vectors
ZP = 2.00 UT = 21.00 DOY = 198



Created: Thu Mar 10 14:08:09 2005

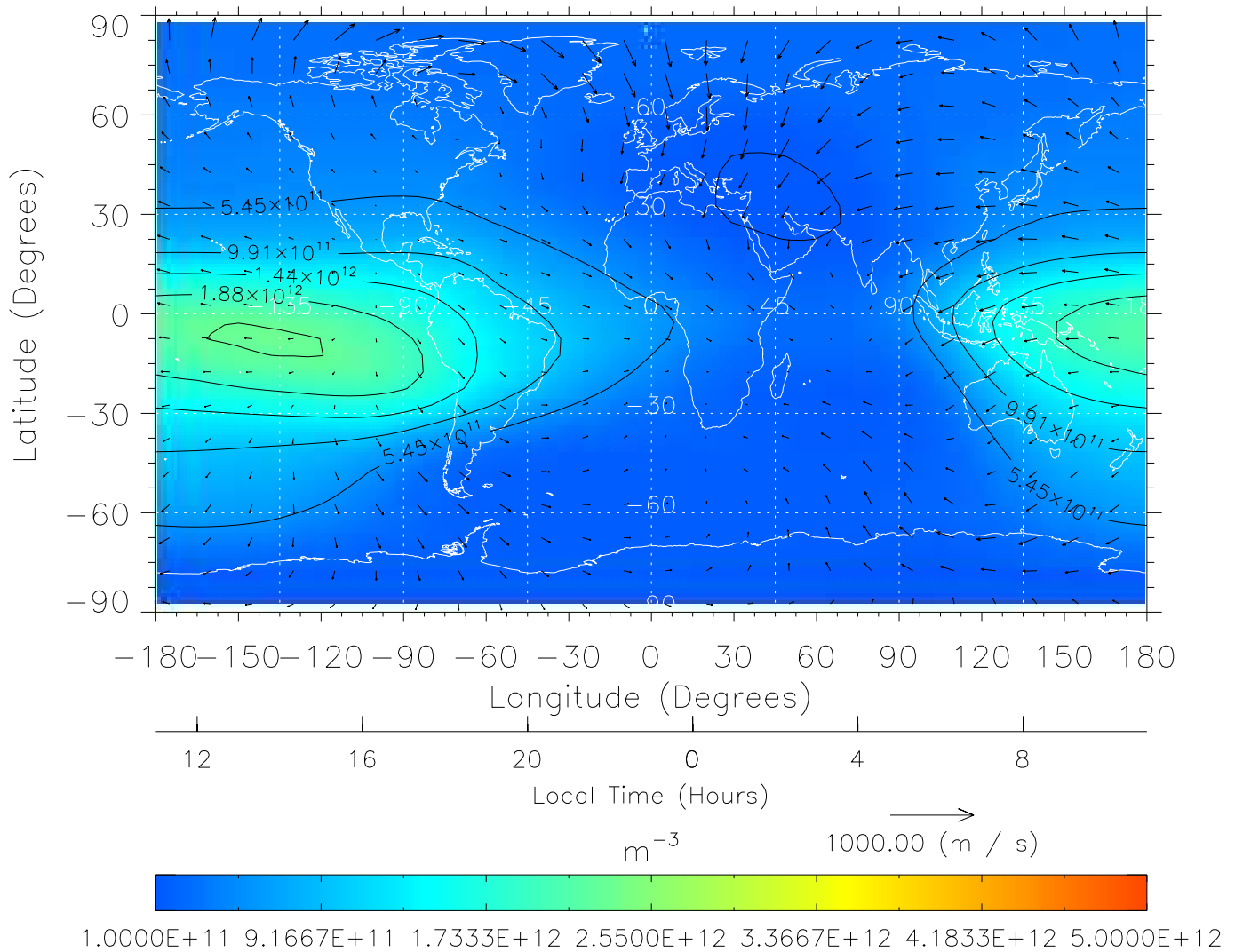
From: /tgcm/histories/secondary/Bastille/Bastille_v1/198.nc

TIME-GCM MAP NmF2 with Neutral Wind vectors
 ZP = 2.00 UT = 22.00 DOY = 198



Created: Thu Mar 10 14:08:09 2005
 From: /tgcm/histories/secondary/Bastille/Bastille_v1/198.nc

TIME-GCM MAP NmF2 with Neutral Wind vectors
 ZP = 2.00 UT = 23.00 DOY = 198



Created: Thu Mar 10 14:08:10 2005

From: /tgcm/histories/secondary/Bastille/Bastille_v1/198.nc