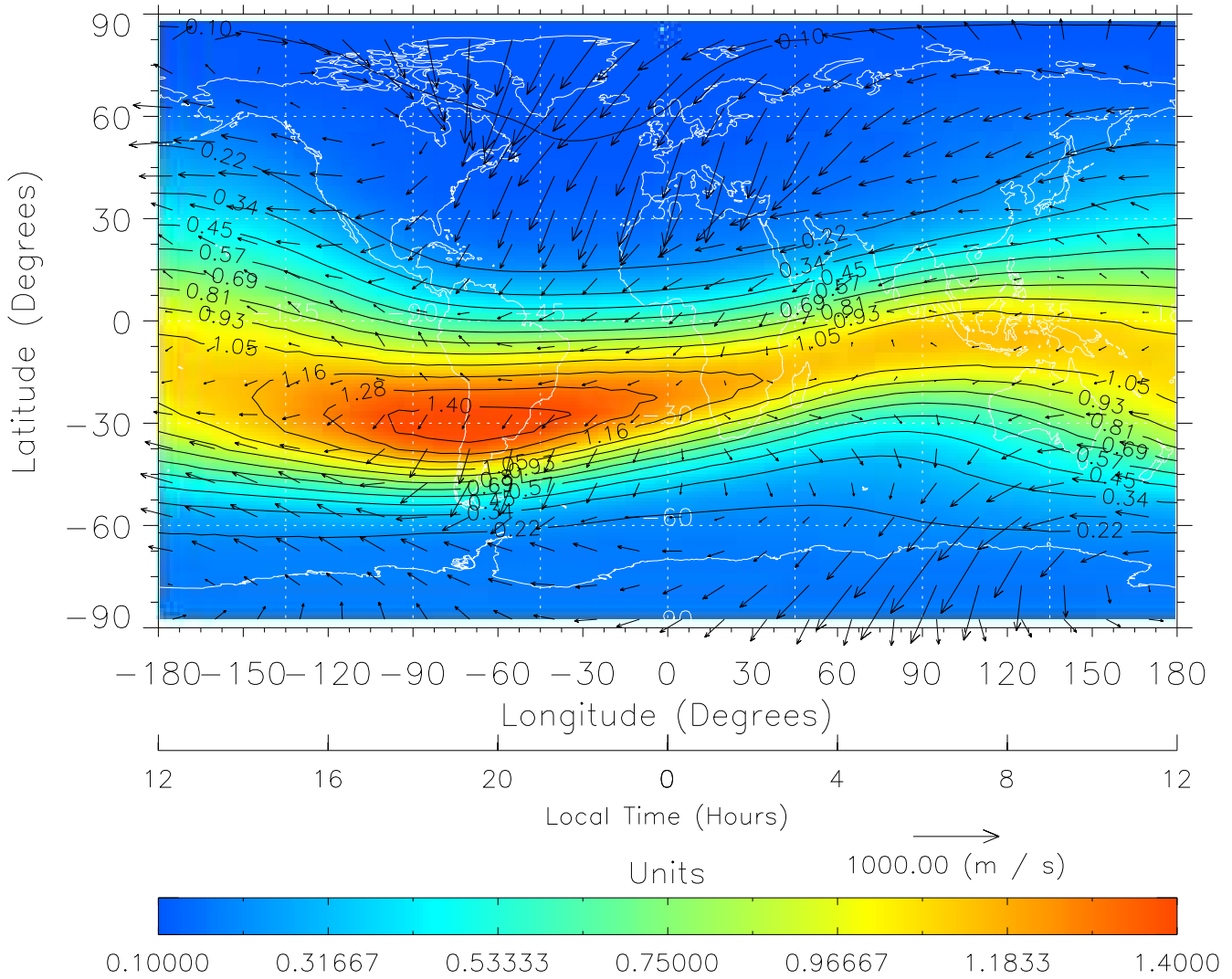


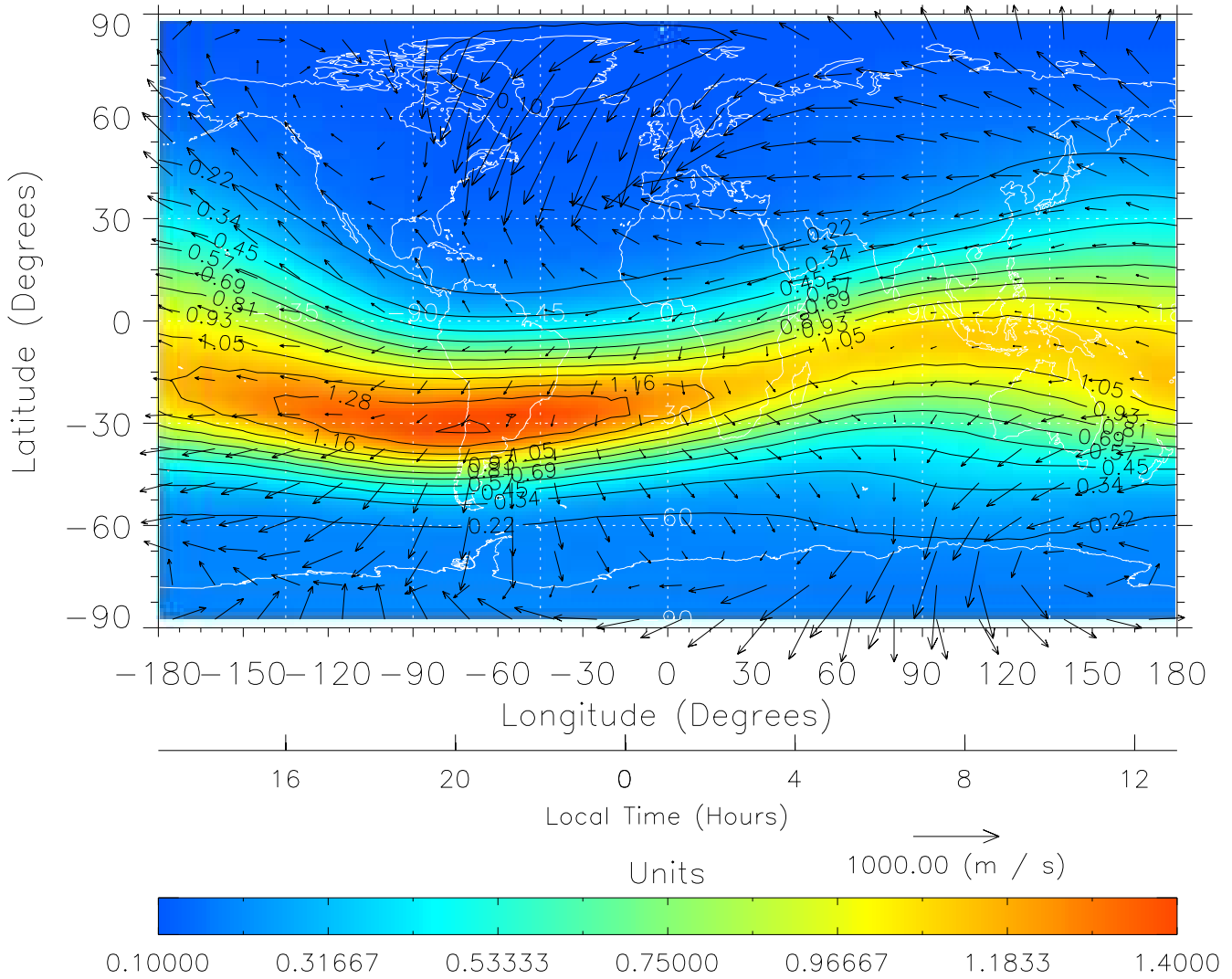
TIME-GCM MAP $\Sigma O/N_2$ with Neutral Wind vectors
ZP = 2.00 UT = 0.00 DOY = 198



Created: Thu Mar 10 14:07:48 2005

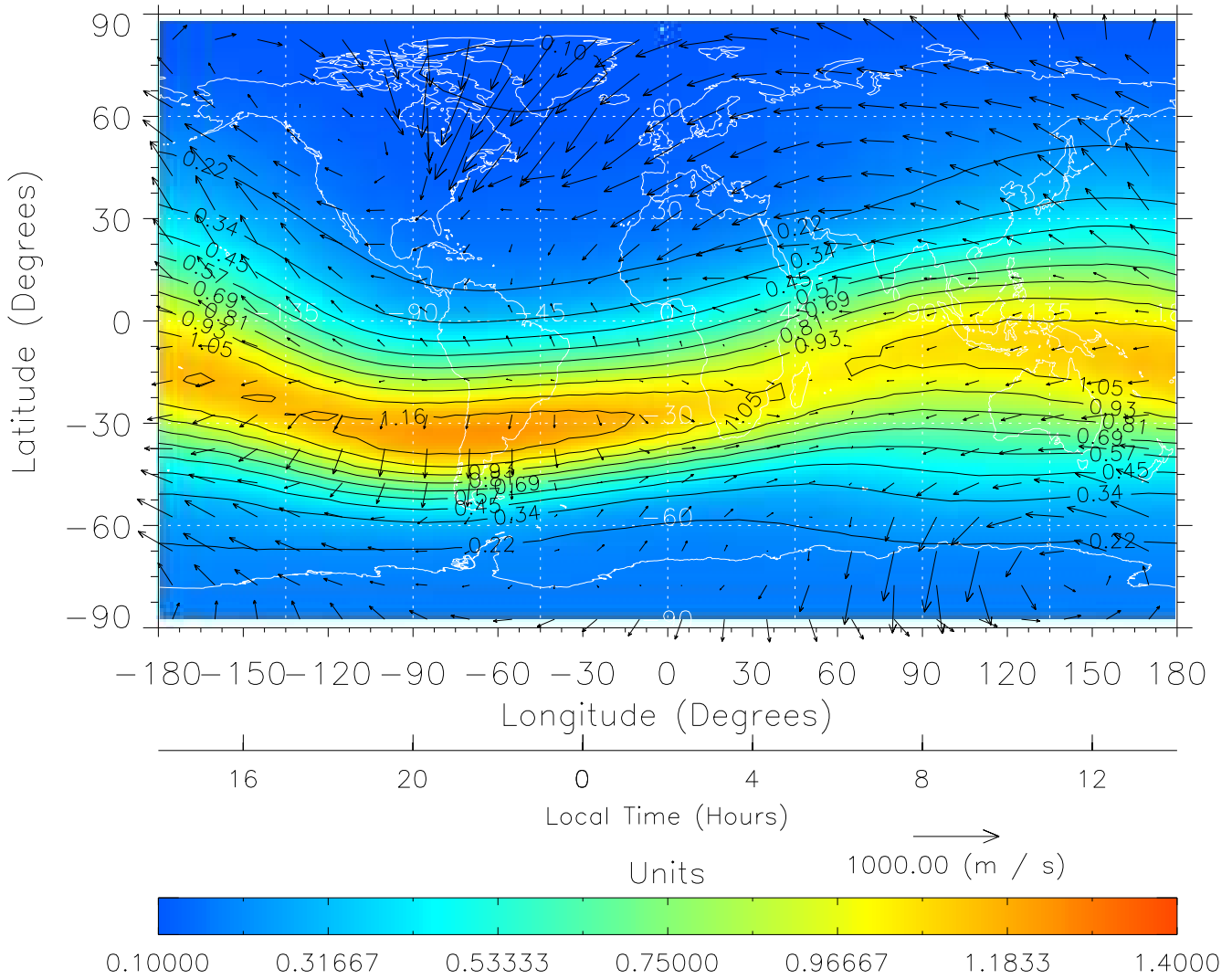
From: /tgcm/histories/secondary/Bastille/Bastille_v1/198.nc

TIME-GCM MAP $\Sigma O/N_2$ with Neutral Wind vectors
ZP = 2.00 UT = 1.00 DOY = 198



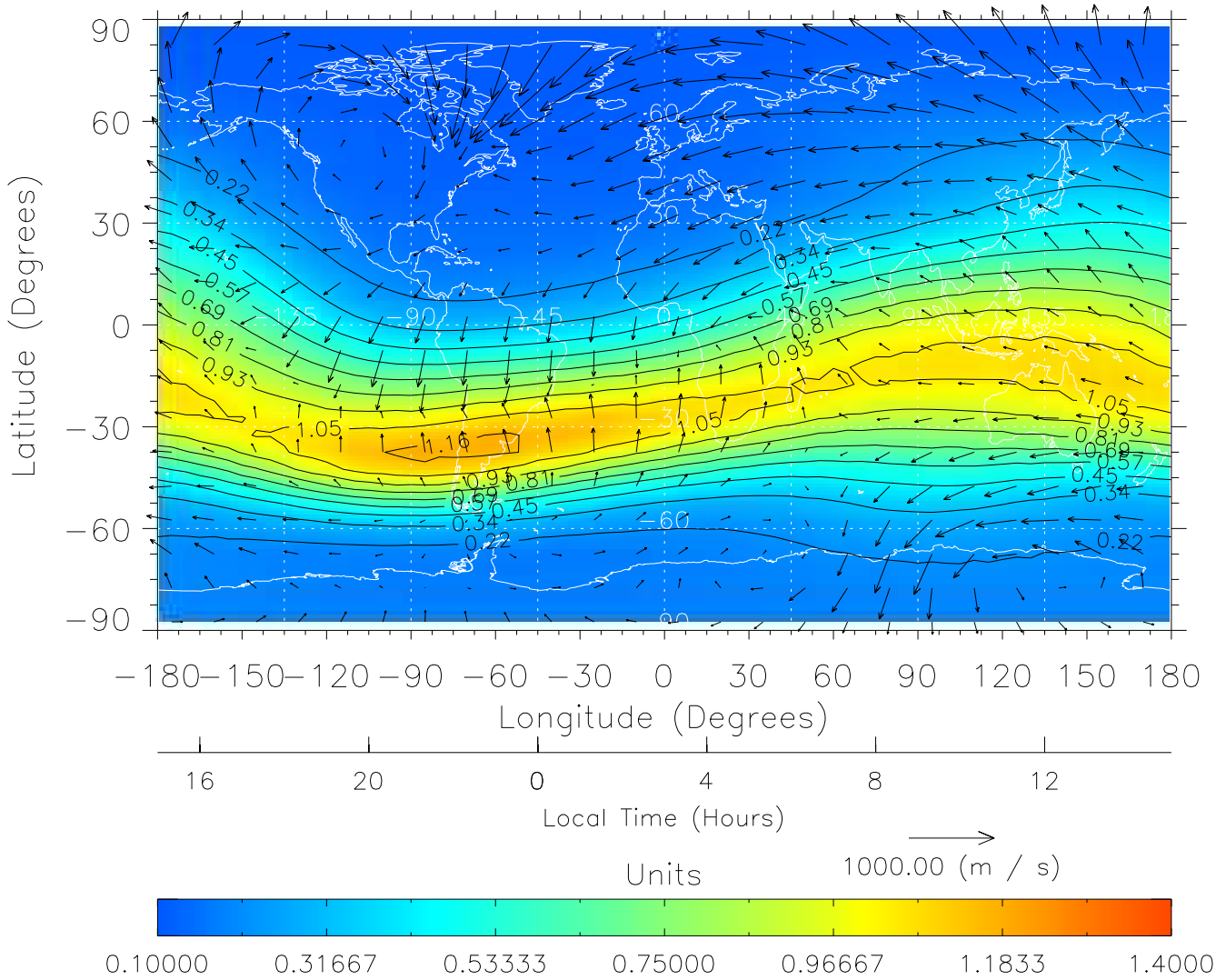
Created: Thu Mar 10 14:07:48 2005
From: /tgcm/histories/secondary/Bastille/Bastille_v1/198.nc

TIME-GCM MAP $\Sigma O/N_2$ with Neutral Wind vectors
ZP = 2.00 UT = 2.00 DOY = 198



Created: Thu Mar 10 14:07:49 2005
From: /tgcm/histories/secondary/Bastille/Bastille_v1/198.nc

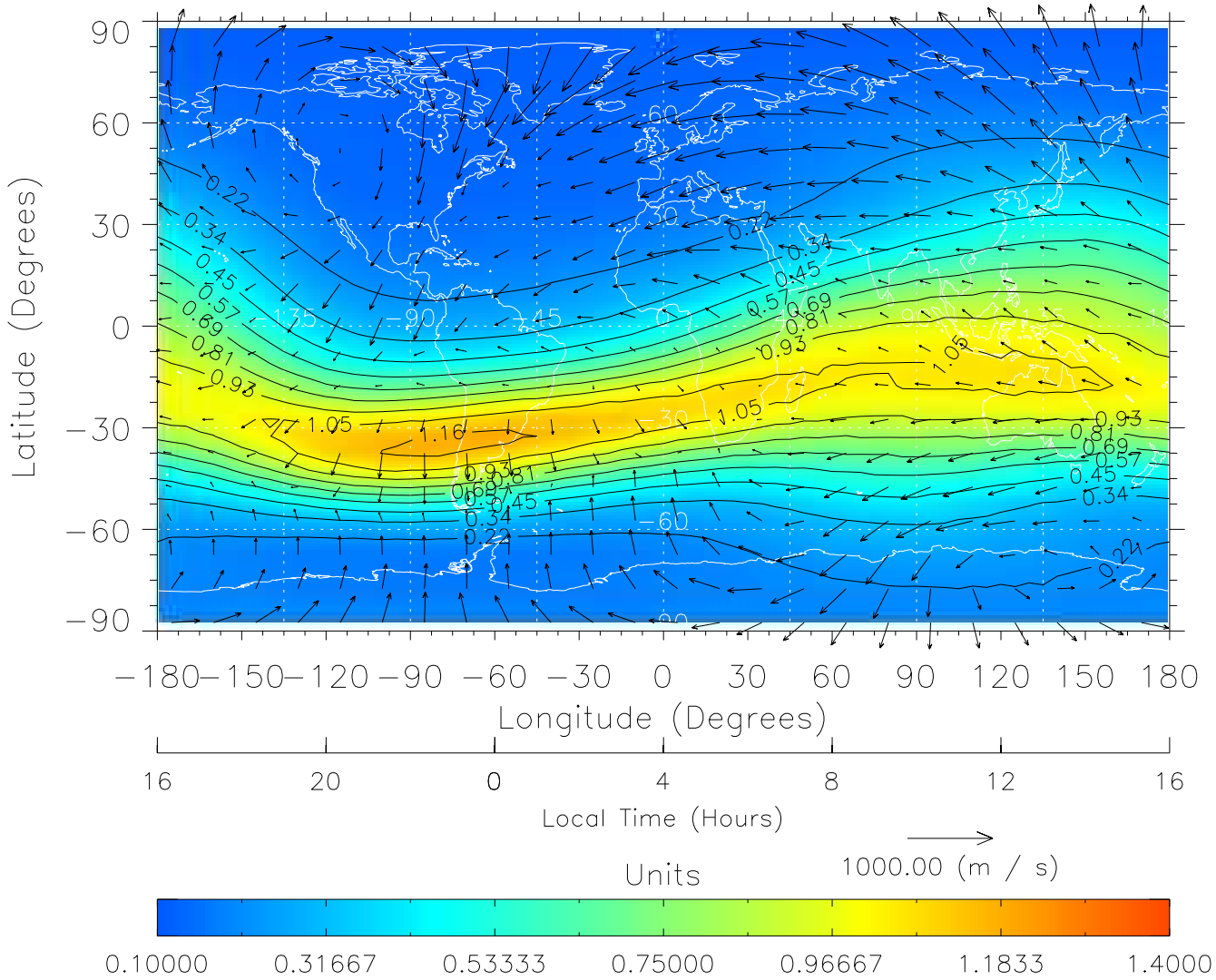
TIME-GCM MAP $\Sigma O/N_2$ with Neutral Wind vectors
ZP = 2.00 UT = 3.00 DOY = 198



Created: Thu Mar 10 14:07:49 2005

From: /tgcm/histories/secondary/Bastille/Bastille_v1/198.nc

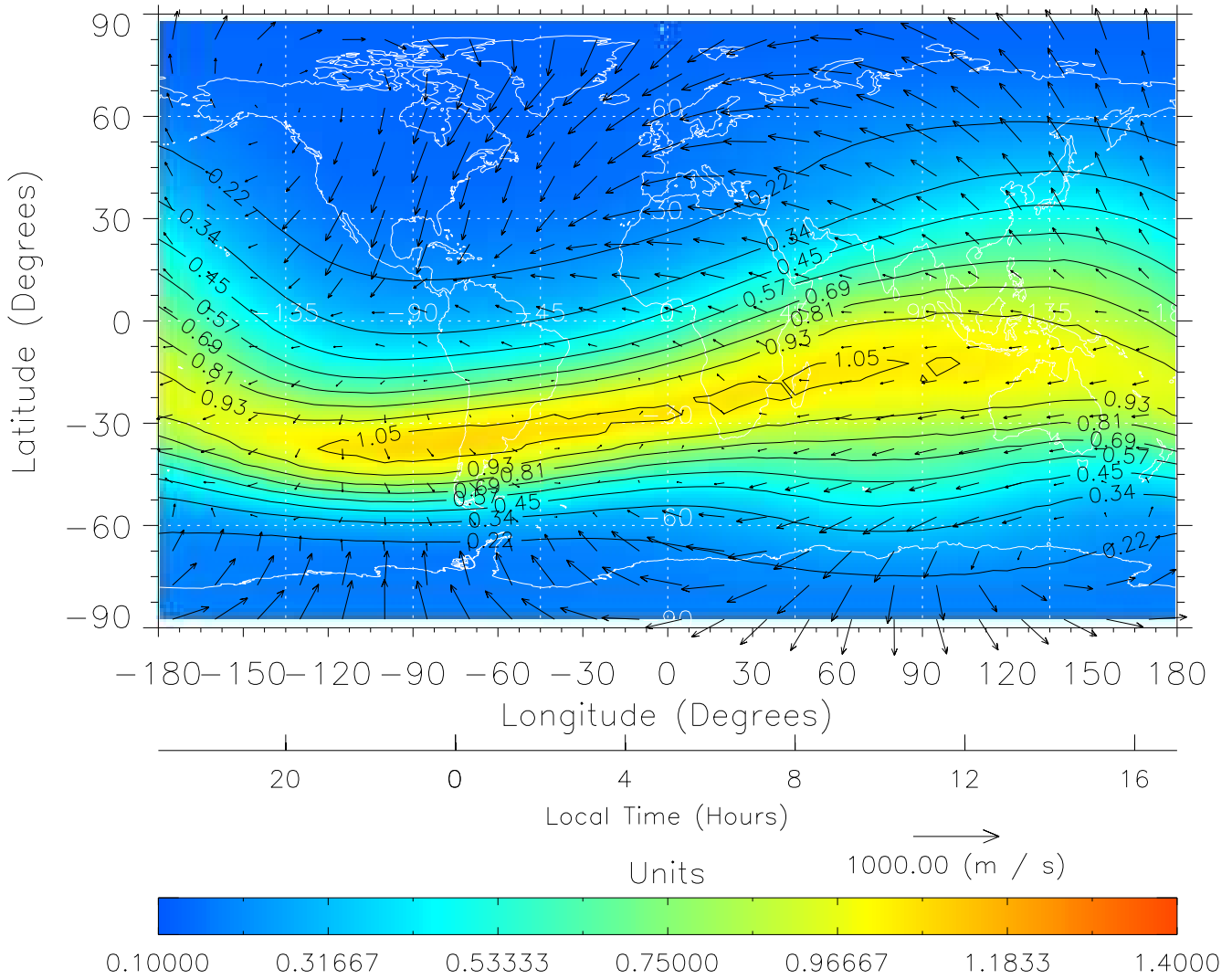
TIME-GCM MAP $\Sigma O/N_2$ with Neutral Wind vectors
ZP = 2.00 UT = 4.00 DOY = 198



Created: Thu Mar 10 14:07:50 2005

From: /tgcm/histories/secondary/Bastille/Bastille_v1/198.nc

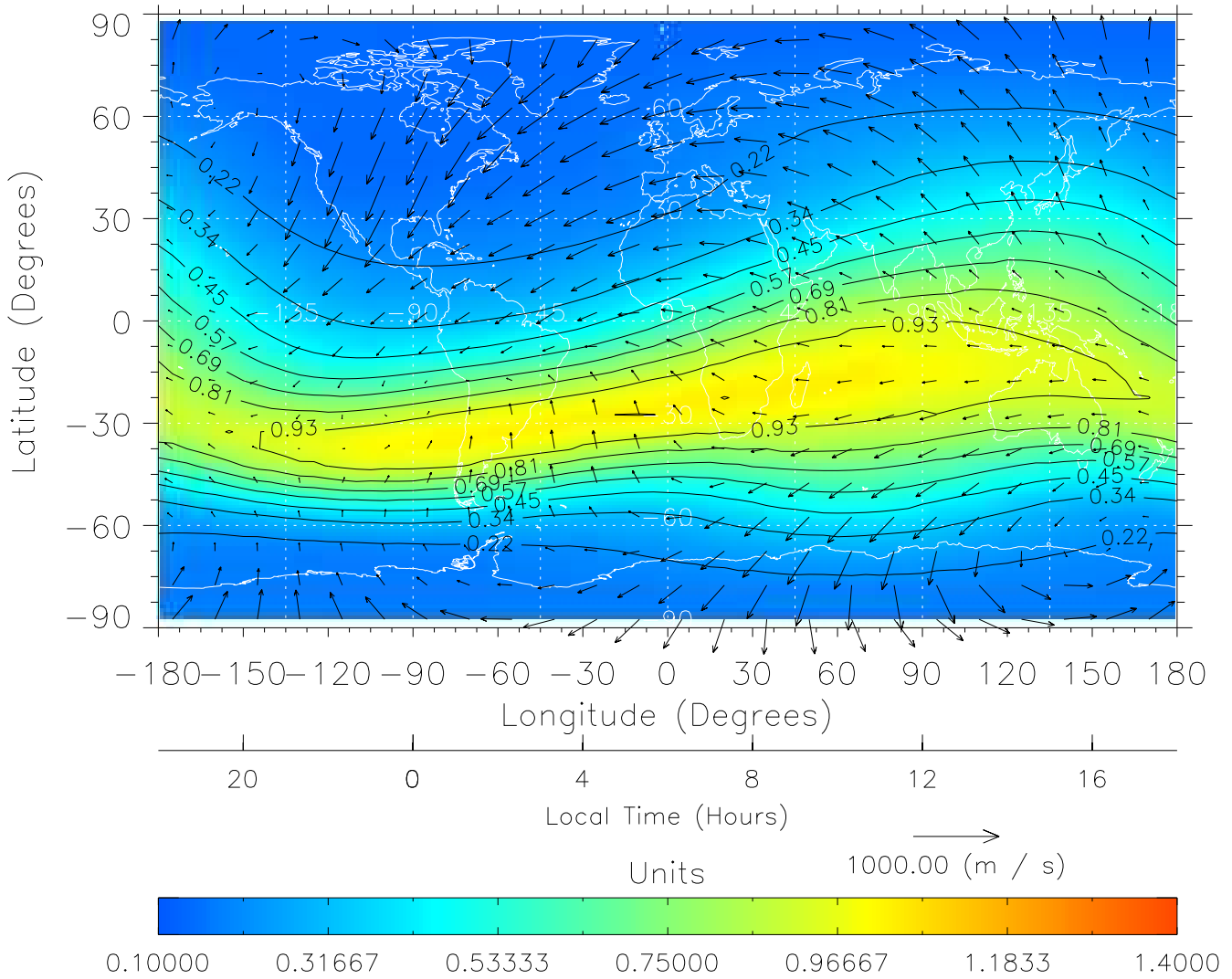
TIME-GCM MAP $\Sigma O/N_2$ with Neutral Wind vectors
ZP = 2.00 UT = 5.00 DOY = 198



Created: Thu Mar 10 14:07:50 2005

From: /tgcm/histories/secondary/Bastille/Bastille_v1/198.nc

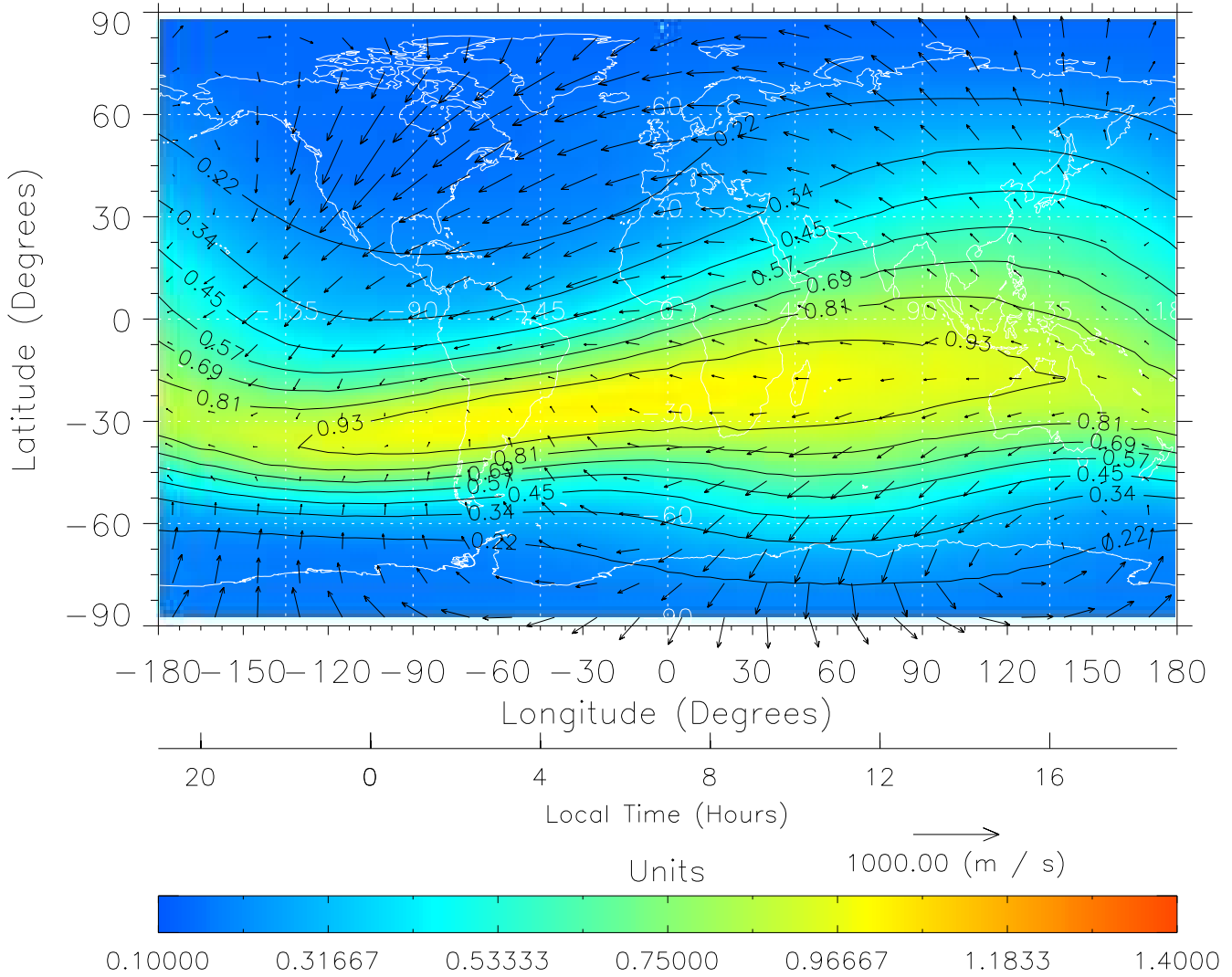
TIME-GCM MAP $\Sigma O/N_2$ with Neutral Wind vectors
ZP = 2.00 UT = 6.00 DOY = 198



Created: Thu Mar 10 14:07:51 2005

From: /tgcm/histories/secondary/Bastille/Bastille_v1/198.nc

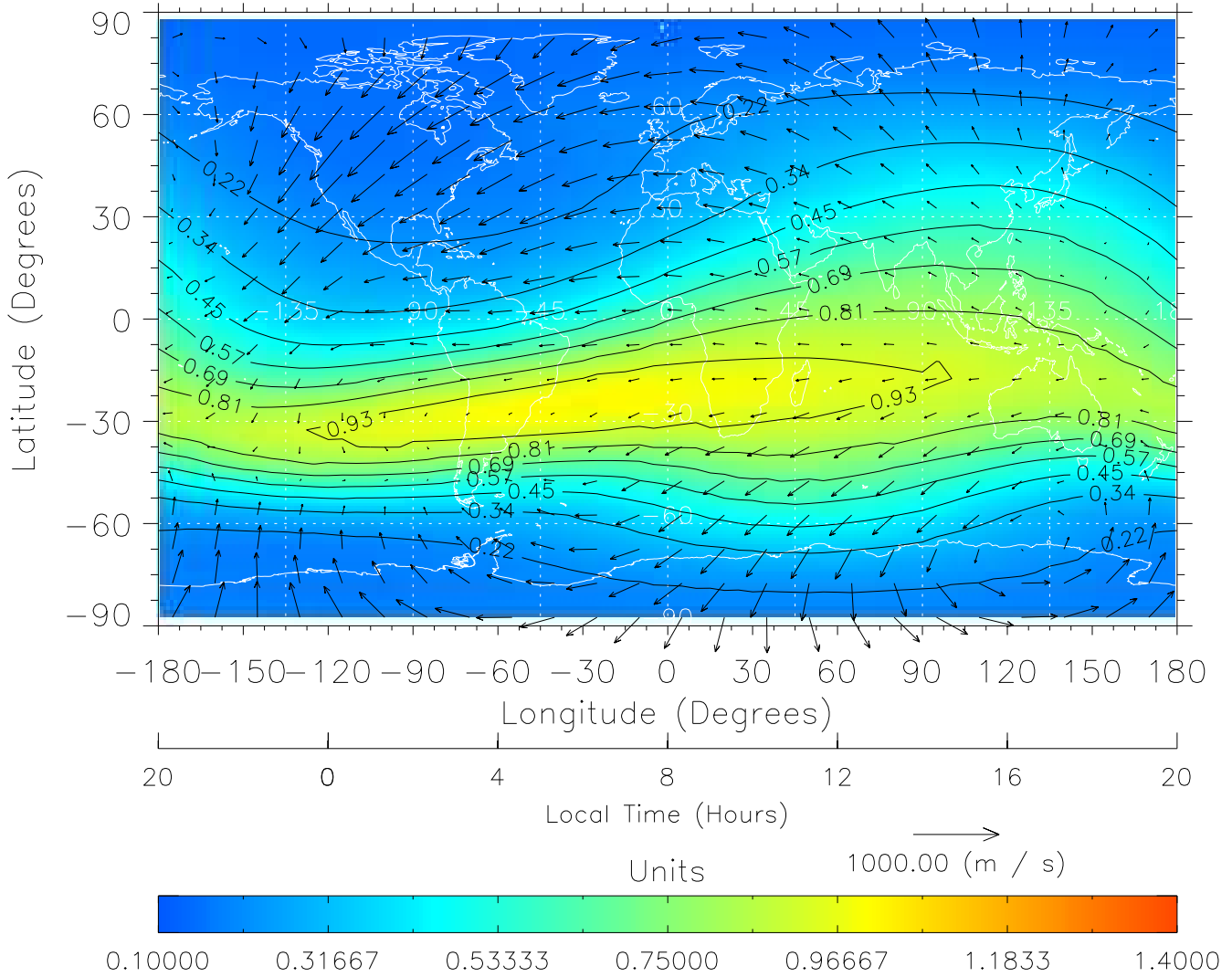
TIME-GCM MAP $\Sigma O/N_2$ with Neutral Wind vectors
ZP = 2.00 UT = 7.00 DOY = 198



Created: Thu Mar 10 14:07:51 2005

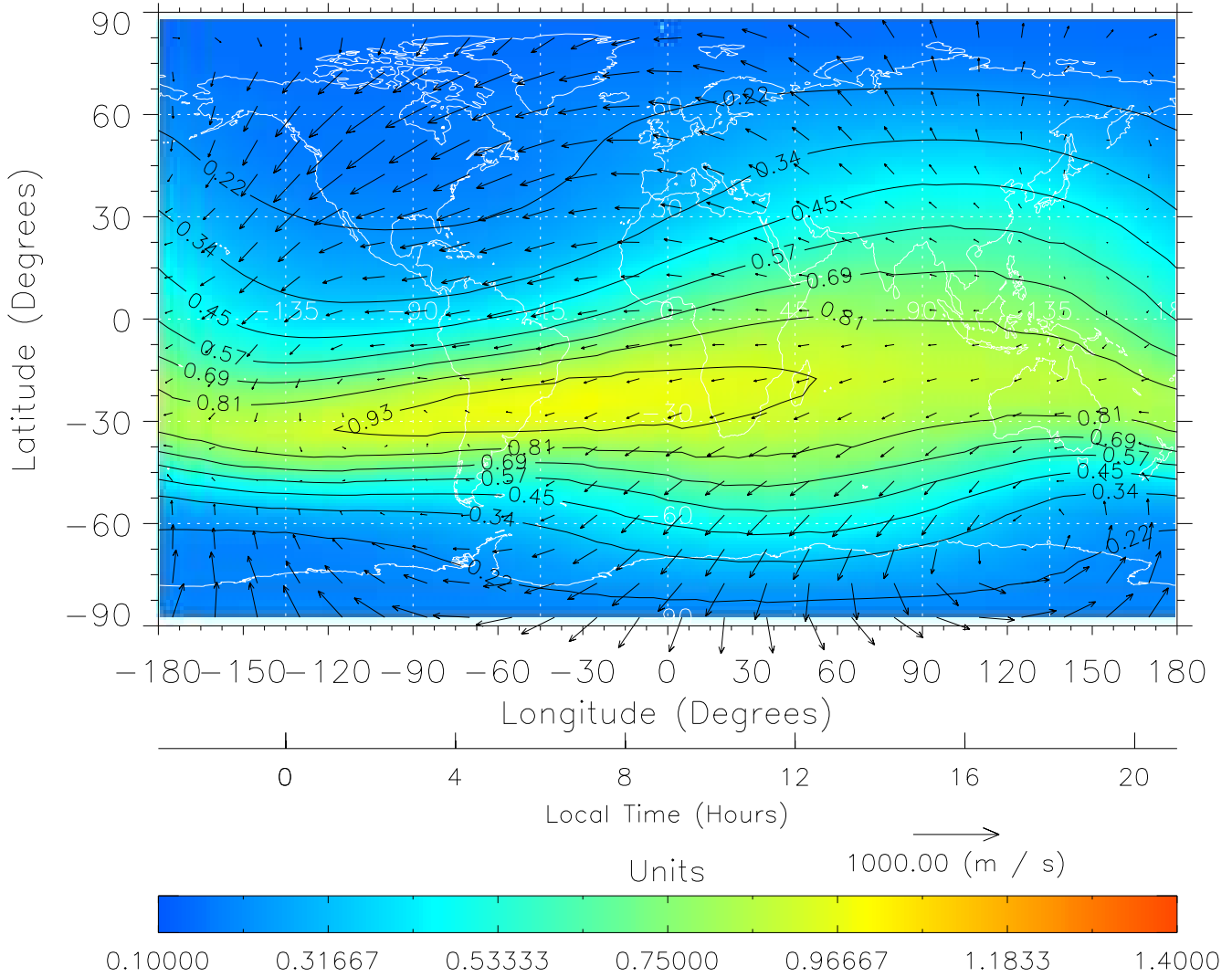
From: /tgcm/histories/secondary/Bastille/Bastille_v1/198.nc

TIME-GCM MAP $\Sigma O/N_2$ with Neutral Wind vectors
ZP = 2.00 UT = 8.00 DOY = 198



Created: Thu Mar 10 14:07:51 2005
From: /tgcm/histories/secondary/Bastille/Bastille_v1/198.nc

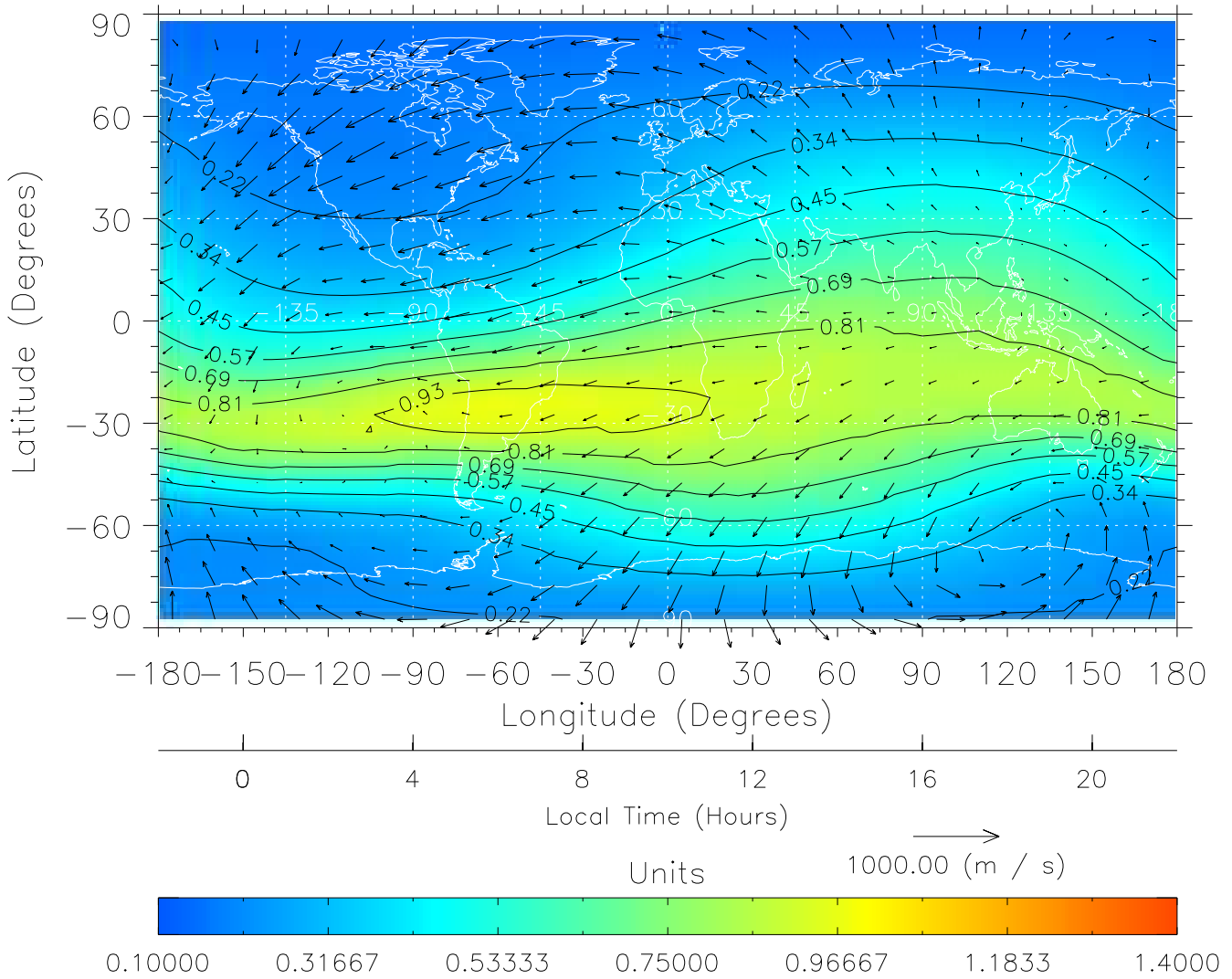
TIME-GCM MAP $\Sigma O/N_2$ with Neutral Wind vectors
ZP = 2.00 UT = 9.00 DOY = 198



Created: Thu Mar 10 14:07:52 2005

From: /tgcm/histories/secondary/Bastille/Bastille_v1/198.nc

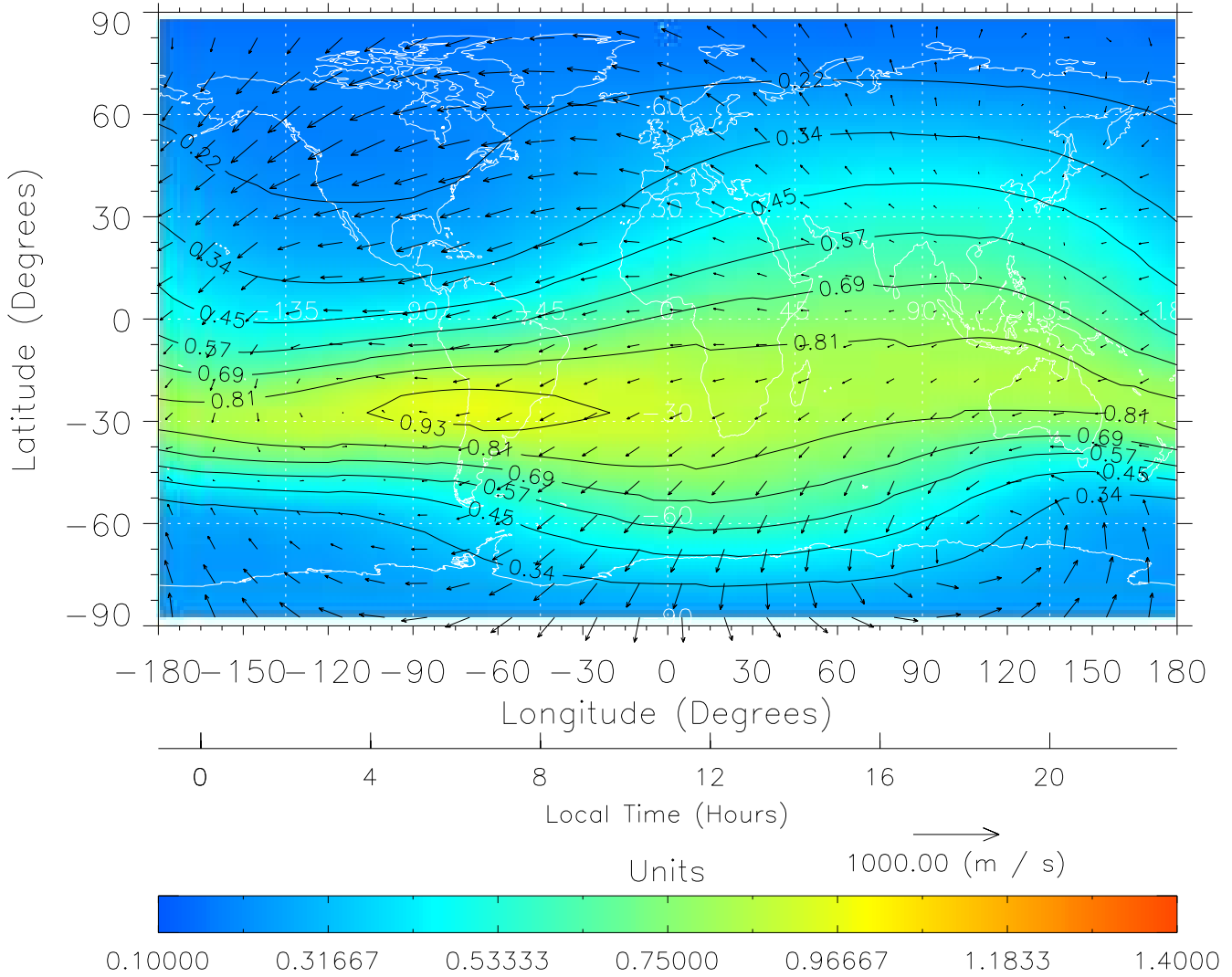
TIME-GCM MAP $\Sigma O/N_2$ with Neutral Wind vectors
ZP = 2.00 UT = 10.00 DOY = 198



Created: Thu Mar 10 14:07:52 2005

From: /tgcm/histories/secondary/Bastille/Bastille_v1/198.nc

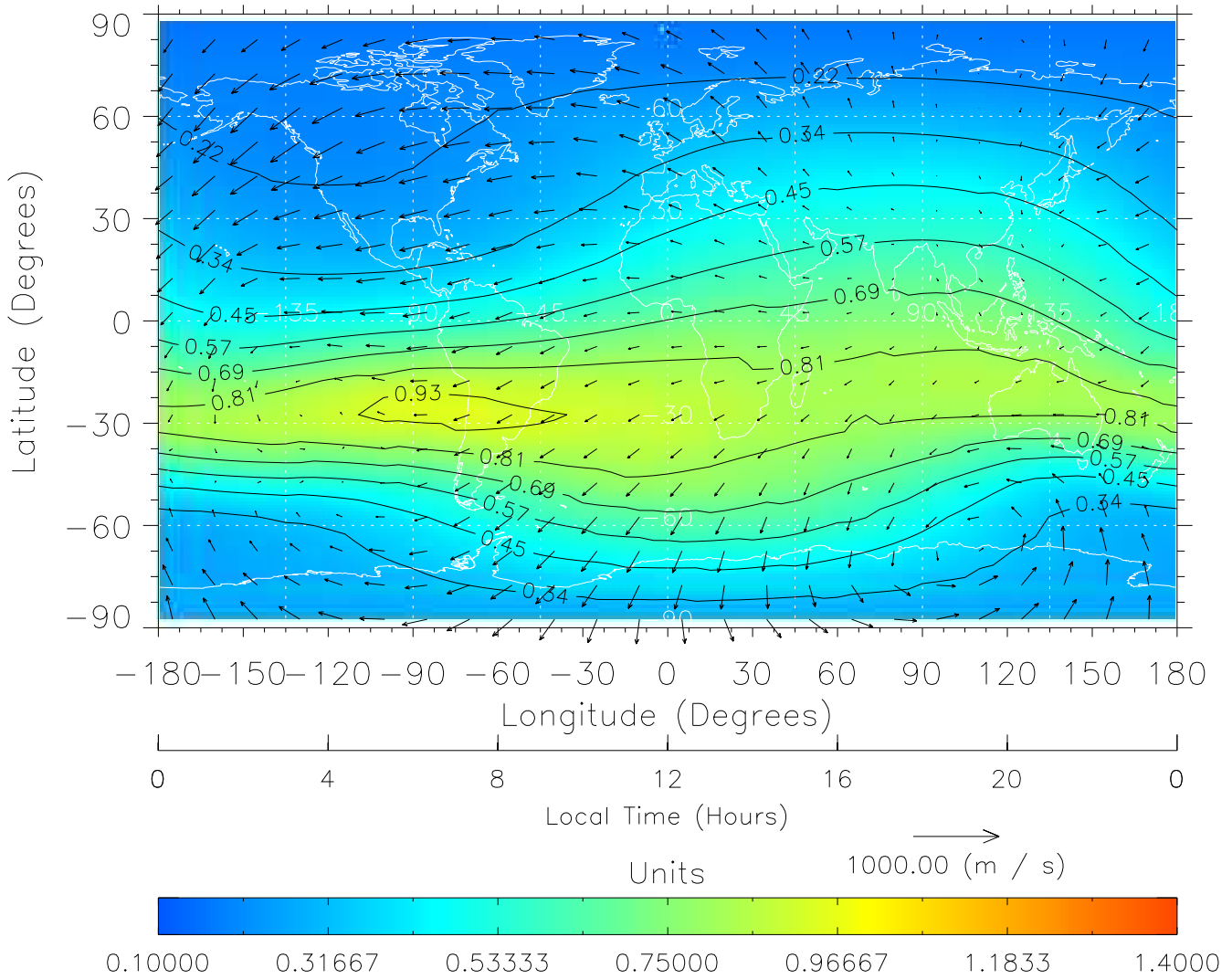
TIME-GCM MAP $\Sigma O/N_2$ with Neutral Wind vectors
ZP = 2.00 UT = 11.00 DOY = 198



Created: Thu Mar 10 14:07:53 2005

From: /tgcm/histories/secondary/Bastille/Bastille_v1/198.nc

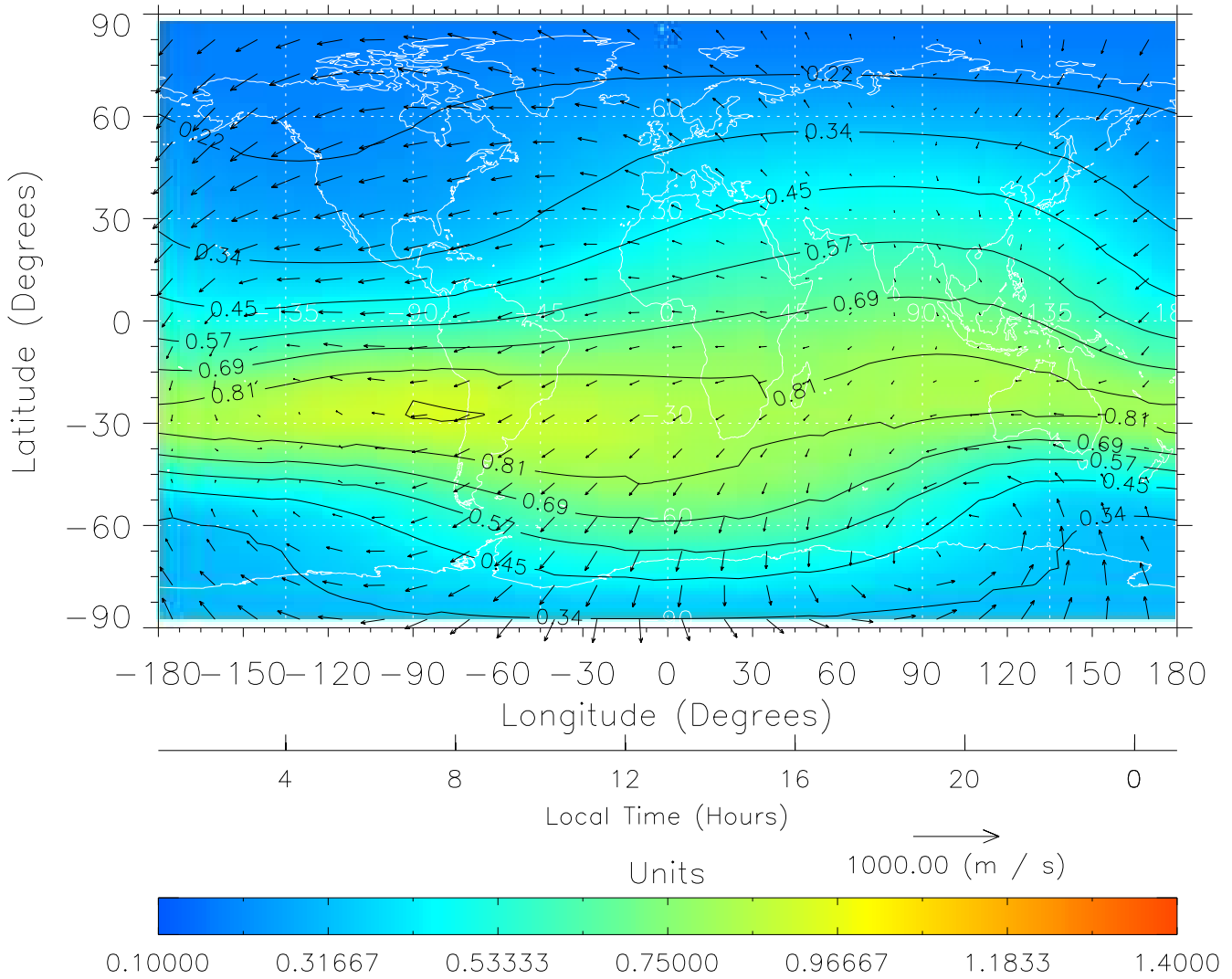
TIME-GCM MAP $\Sigma O/N_2$ with Neutral Wind vectors
ZP = 2.00 UT = 12.00 DOY = 198



Created: Thu Mar 10 14:07:53 2005

From: /tgcm/histories/secondary/Bastille/Bastille_v1/198.nc

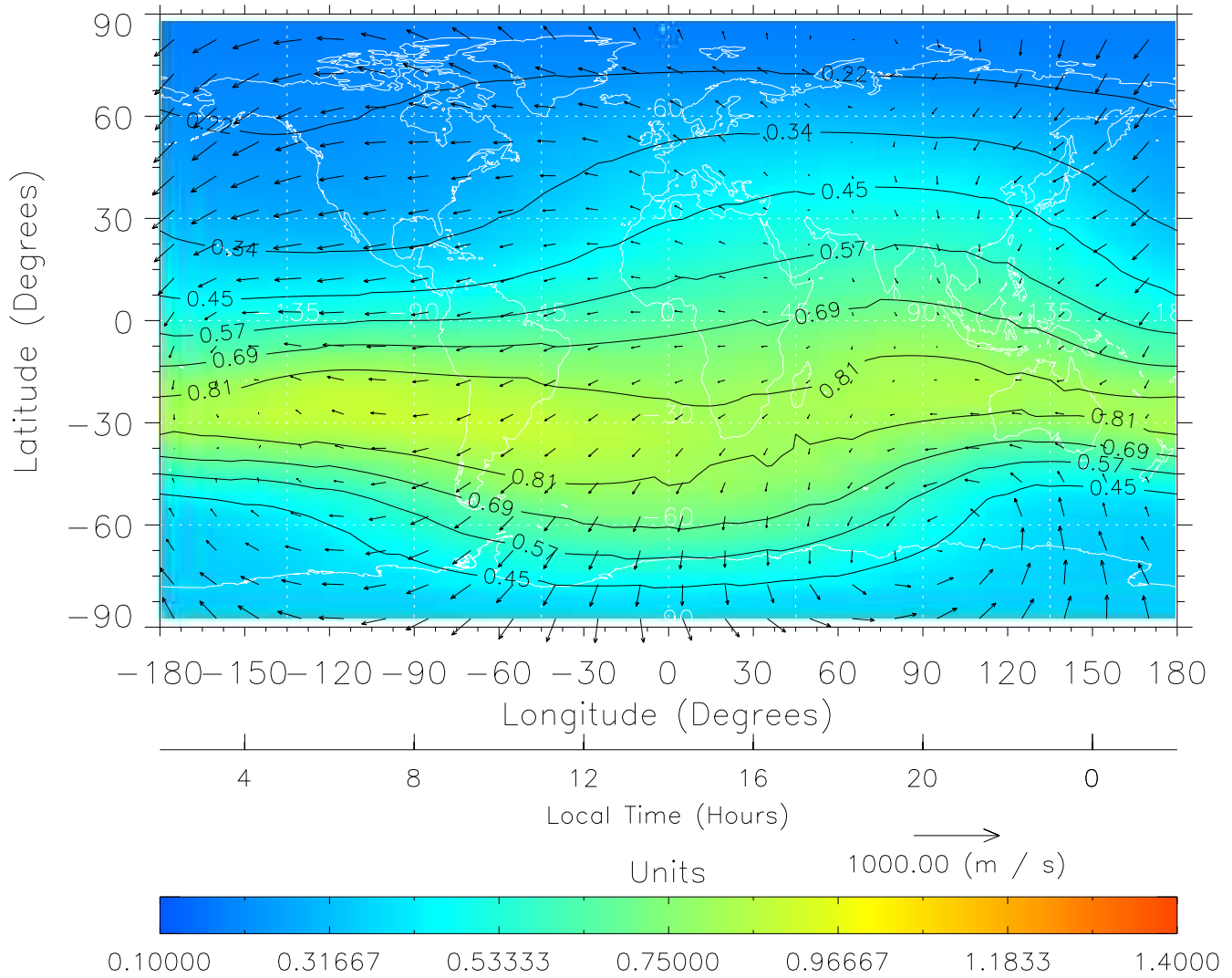
TIME-GCM MAP $\Sigma O/N_2$ with Neutral Wind vectors
ZP = 2.00 UT = 13.00 DOY = 198



Created: Thu Mar 10 14:07:54 2005

From: /tgcm/histories/secondary/Bastille/Bastille_v1/198.nc

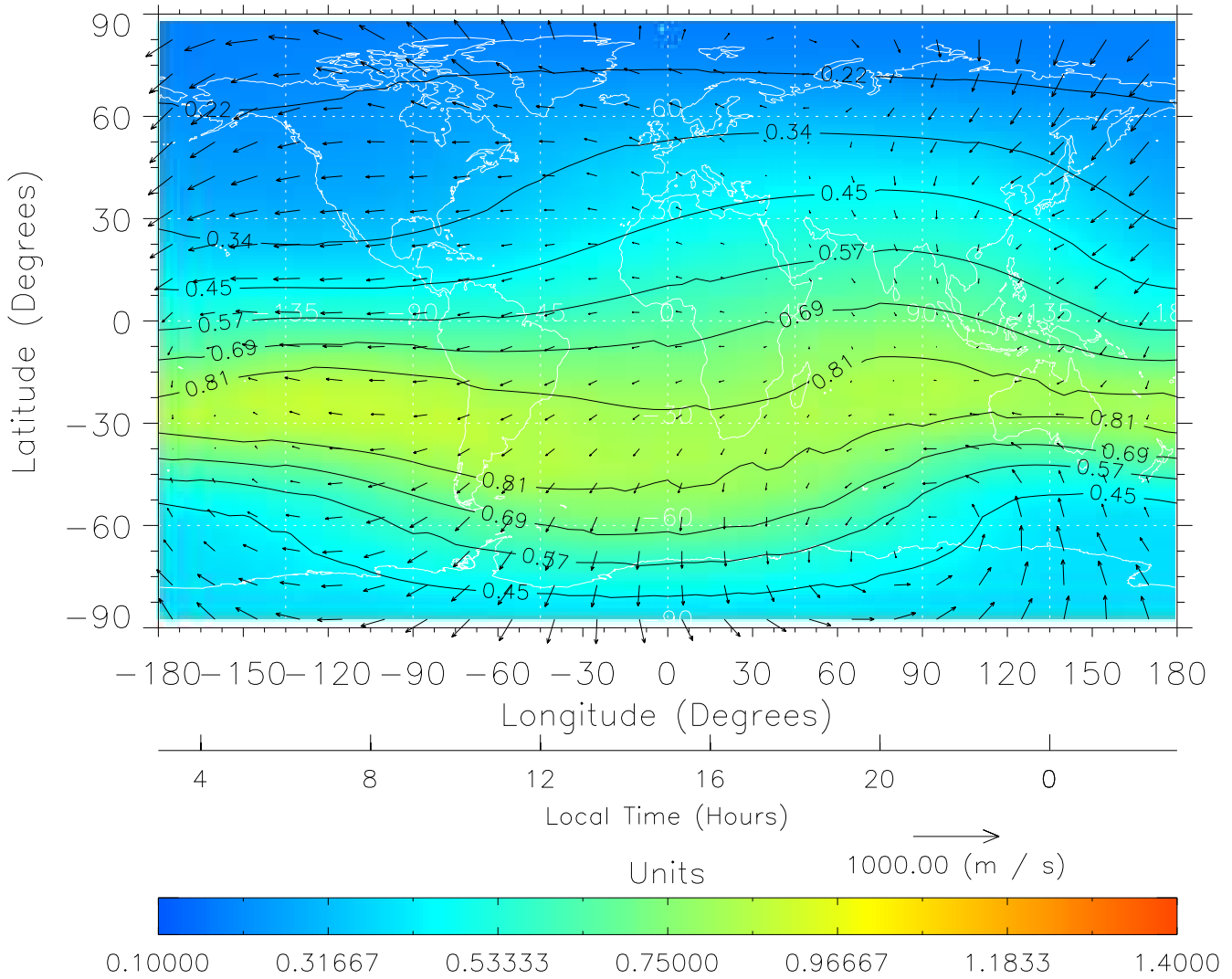
TIME-GCM MAP $\Sigma O/N_2$ with Neutral Wind vectors
ZP = 2.00 UT = 14.00 DOY = 198



Created: Thu Mar 10 14:07:54 2005

From: /tgcm/histories/secondary/Bastille/Bastille_v1/198.nc

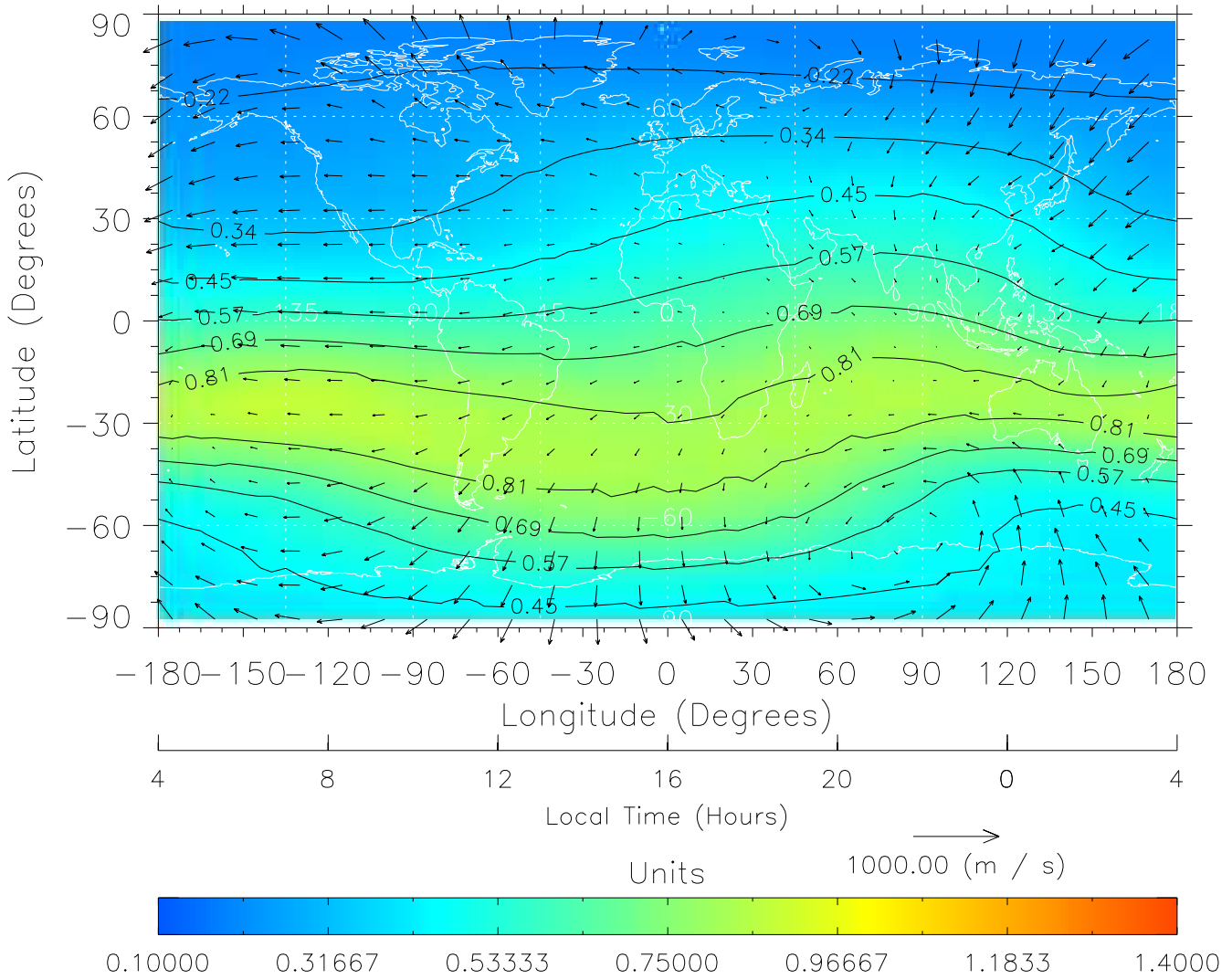
TIME-GCM MAP $\Sigma O/N_2$ with Neutral Wind vectors
ZP = 2.00 UT = 15.00 DOY = 198



Created: Thu Mar 10 14:07:55 2005

From: /tgcm/histories/secondary/Bastille/Bastille_v1/198.nc

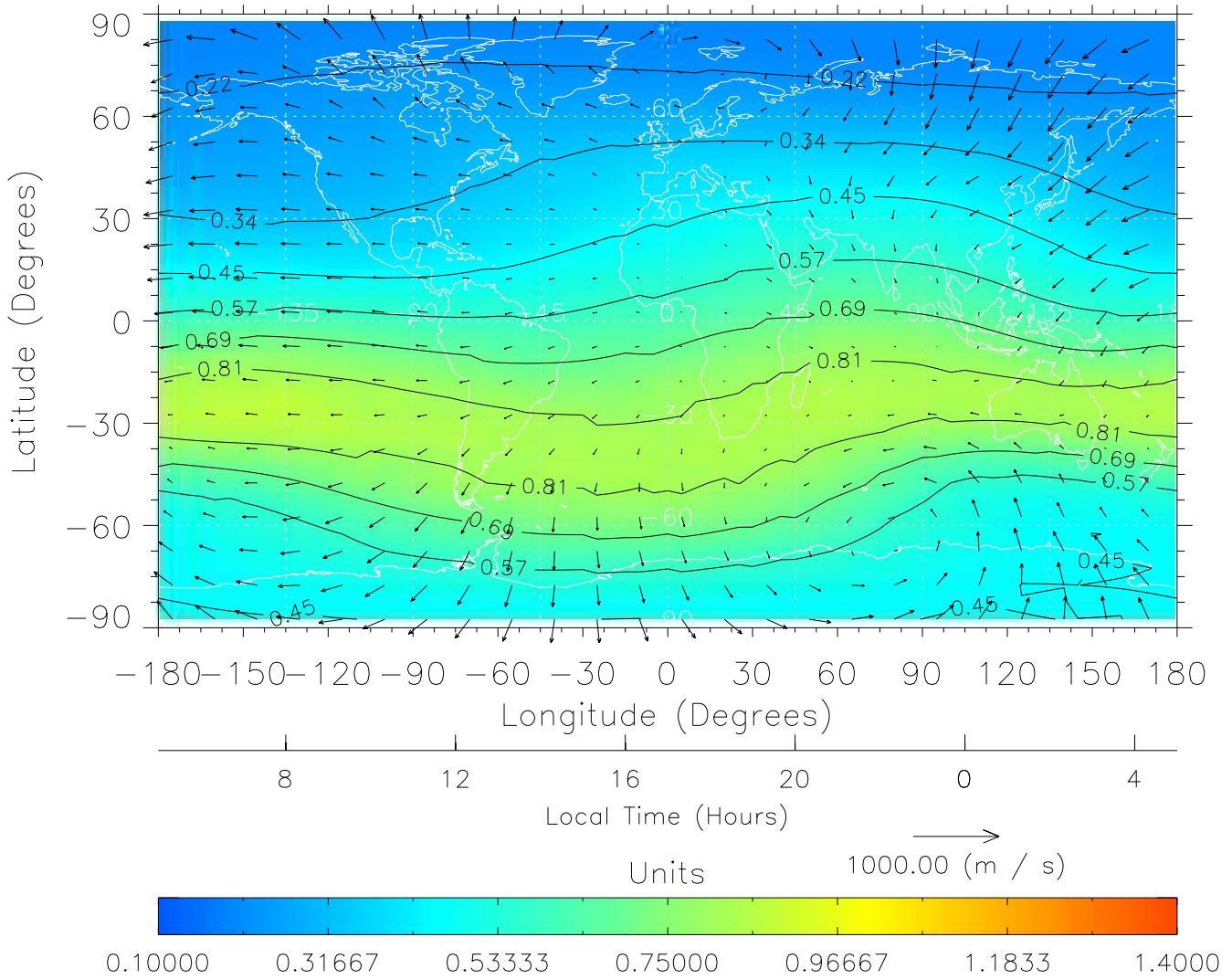
TIME-GCM MAP $\Sigma O/N_2$ with Neutral Wind vectors
 ZP = 2.00 UT = 16.00 DOY = 198



Created: Thu Mar 10 14:07:55 2005

From: /tgcm/histories/secondary/Bastille/Bastille_v1/198.nc

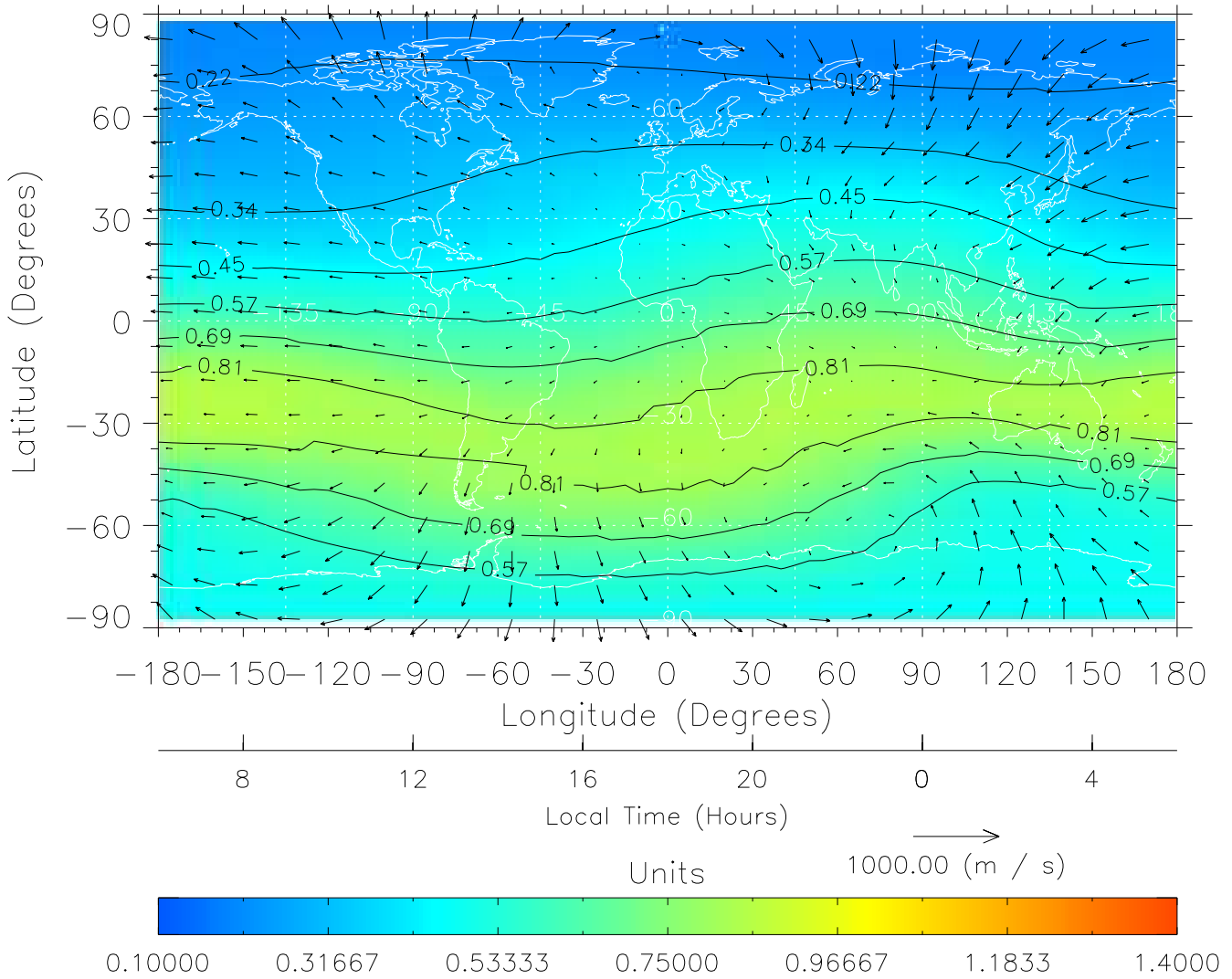
TIME-GCM MAP $\Sigma O/N_2$ with Neutral Wind vectors
ZP = 2.00 UT = 17.00 DOY = 198



Created: Thu Mar 10 14:07:56 2005

From: /tgcm/histories/secondary/Bastille/Bastille_v1/198.nc

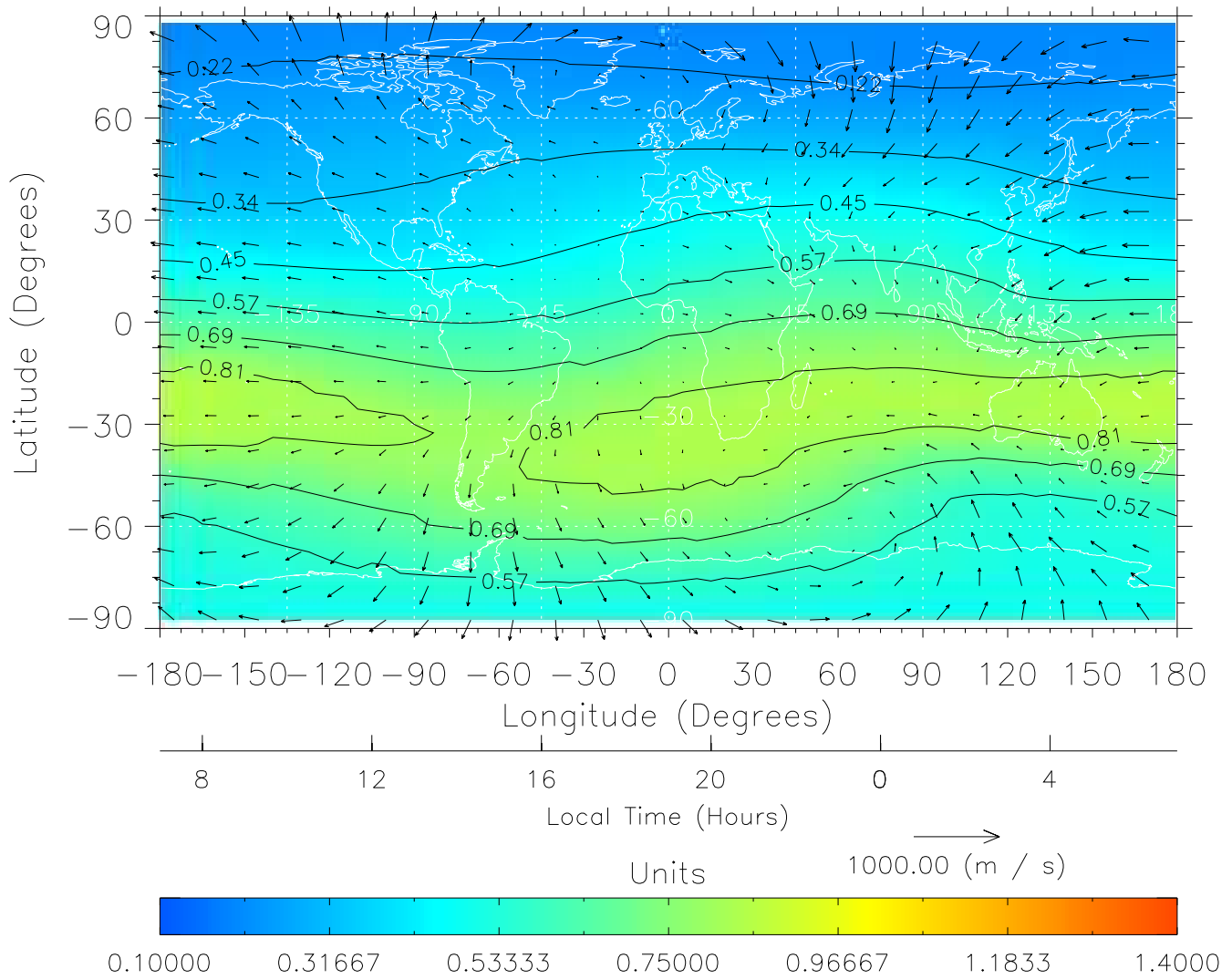
TIME-GCM MAP $\Sigma O/N_2$ with Neutral Wind vectors
 ZP = 2.00 UT = 18.00 DOY = 198



Created: Thu Mar 10 14:07:56 2005

From: /tgcm/histories/secondary/Bastille/Bastille_v1/198.nc

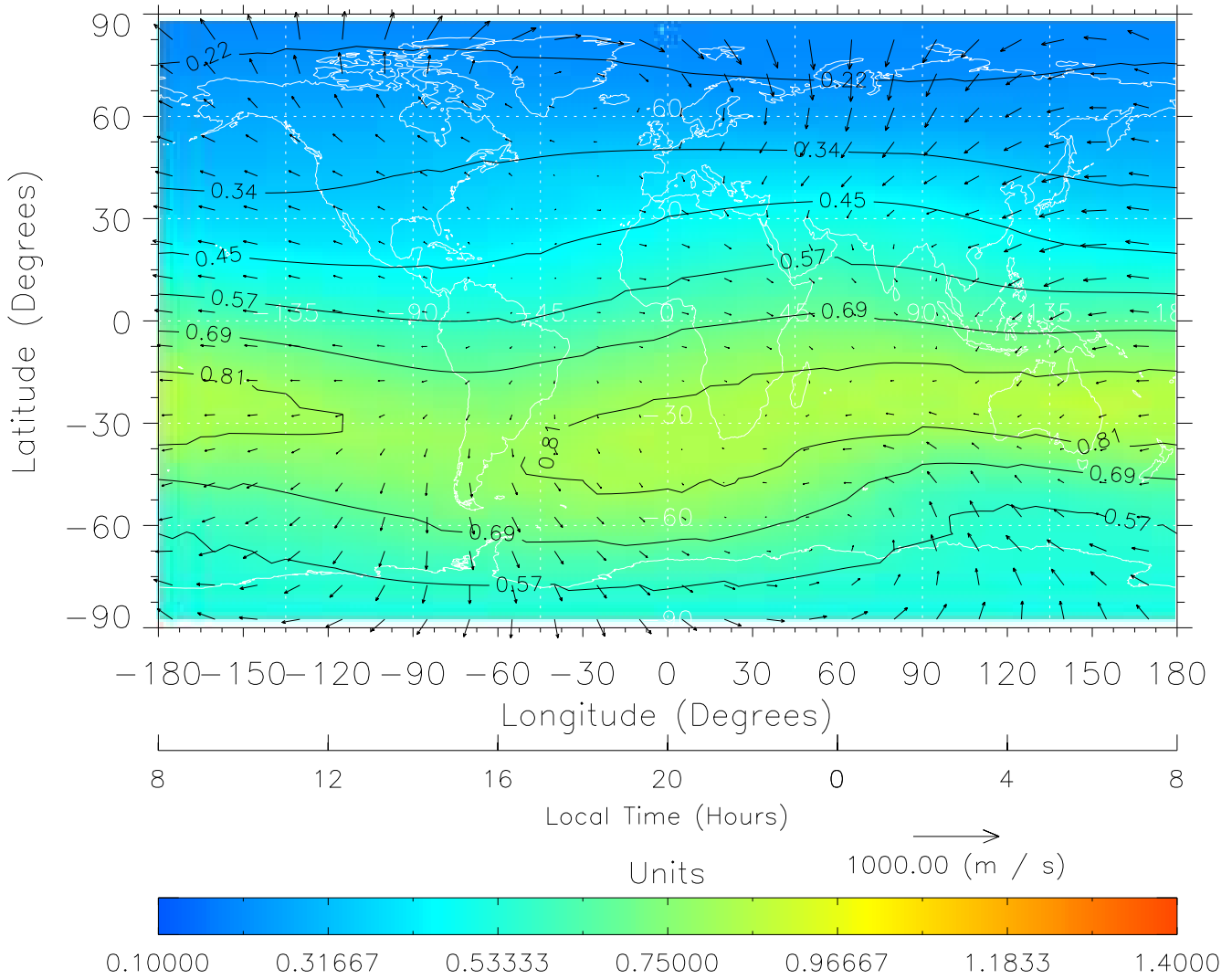
TIME-GCM MAP $\Sigma O/N_2$ with Neutral Wind vectors
ZP = 2.00 UT = 19.00 DOY = 198



Created: Thu Mar 10 14:07:57 2005

From: /tgcm/histories/secondary/Bastille/Bastille_v1/198.nc

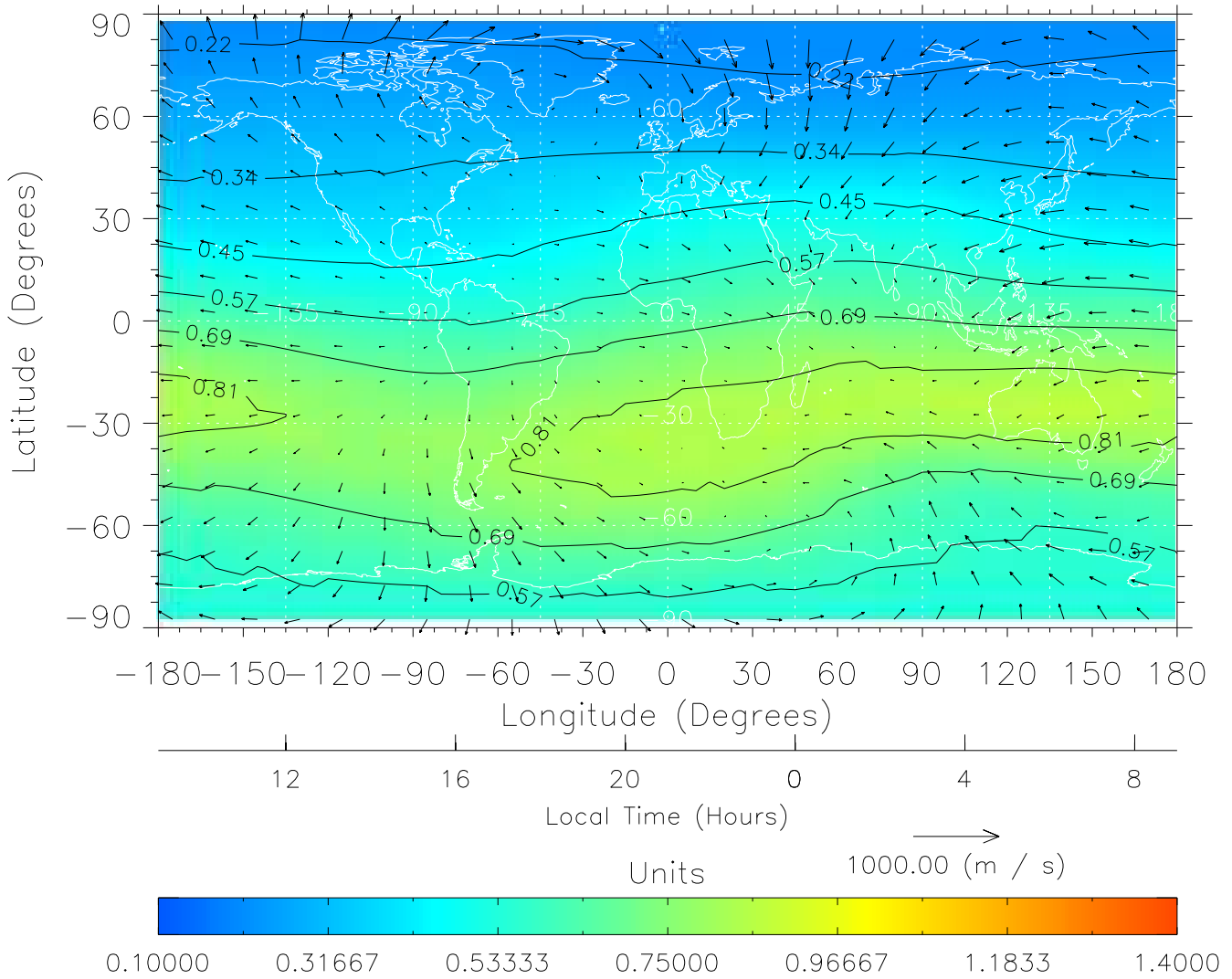
TIME-GCM MAP $\Sigma O/N_2$ with Neutral Wind vectors
ZP = 2.00 UT = 20.00 DOY = 198



Created: Thu Mar 10 14:07:57 2005

From: /tgcm/histories/secondary/Bastille/Bastille_v1/198.nc

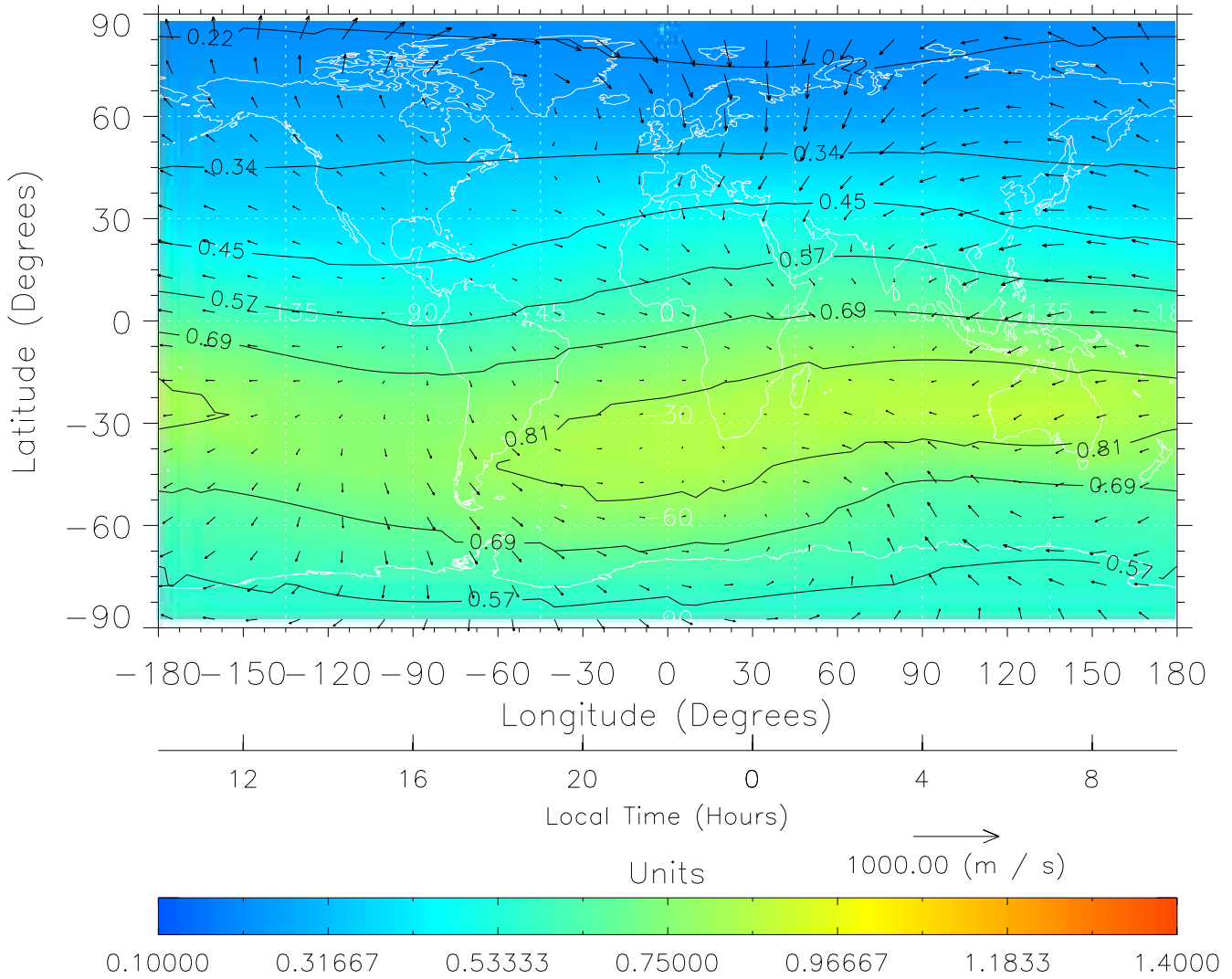
TIME-GCM MAP $\Sigma O/N_2$ with Neutral Wind vectors
ZP = 2.00 UT = 21.00 DOY = 198



Created: Thu Mar 10 14:07:58 2005

From: /tgcm/histories/secondary/Bastille/Bastille_v1/198.nc

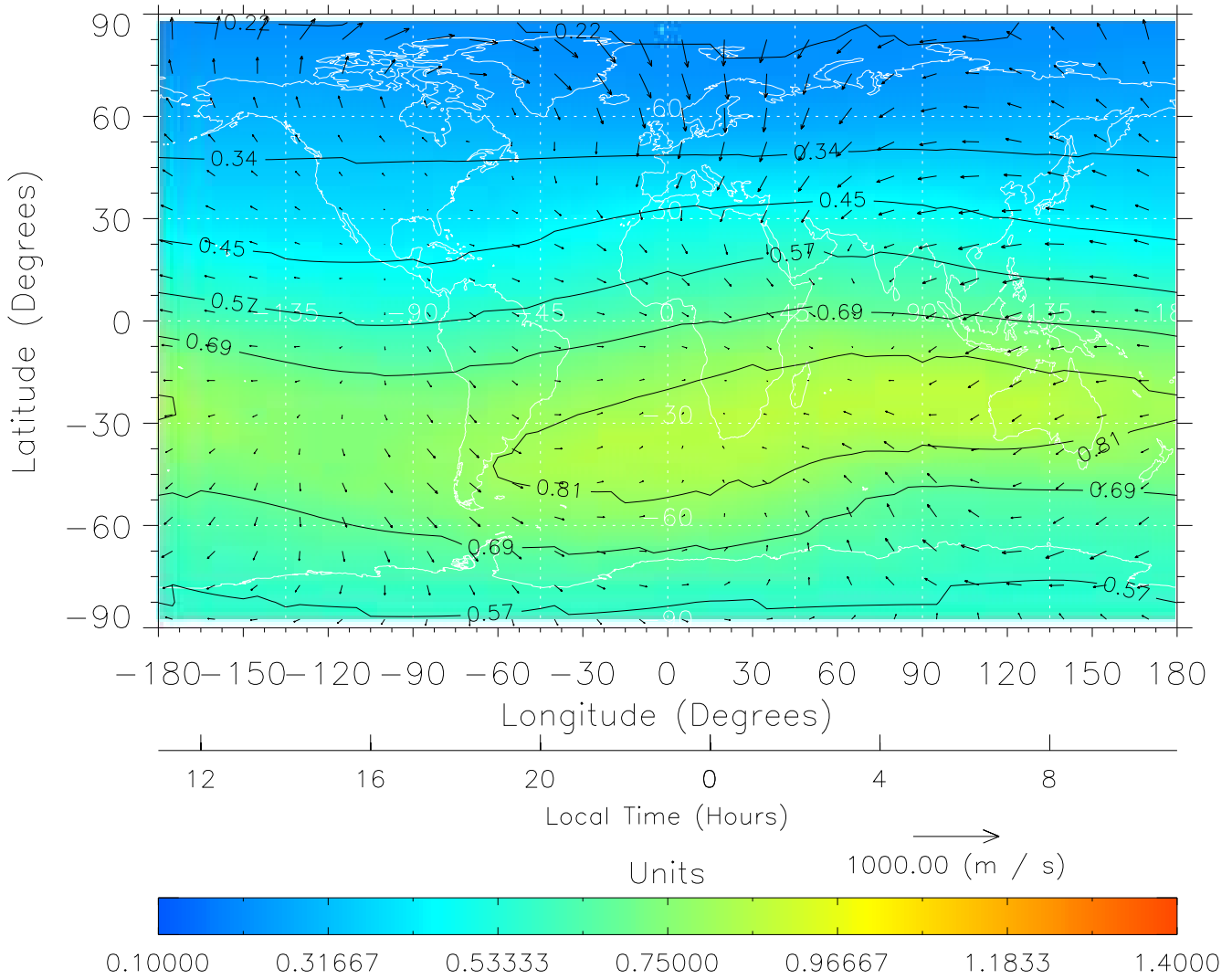
TIME-GCM MAP $\Sigma O/N_2$ with Neutral Wind vectors
ZP = 2.00 UT = 22.00 DOY = 198



Created: Thu Mar 10 14:07:58 2005

From: /tgcm/histories/secondary/Bastille/Bastille_v1/198.nc

TIME-GCM MAP $\Sigma O/N_2$ with Neutral Wind vectors
ZP = 2.00 UT = 23.00 DOY = 198



Created: Thu Mar 10 14:07:58 2005

From: /tgcm/histories/secondary/Bastille/Bastille_v1/198.nc