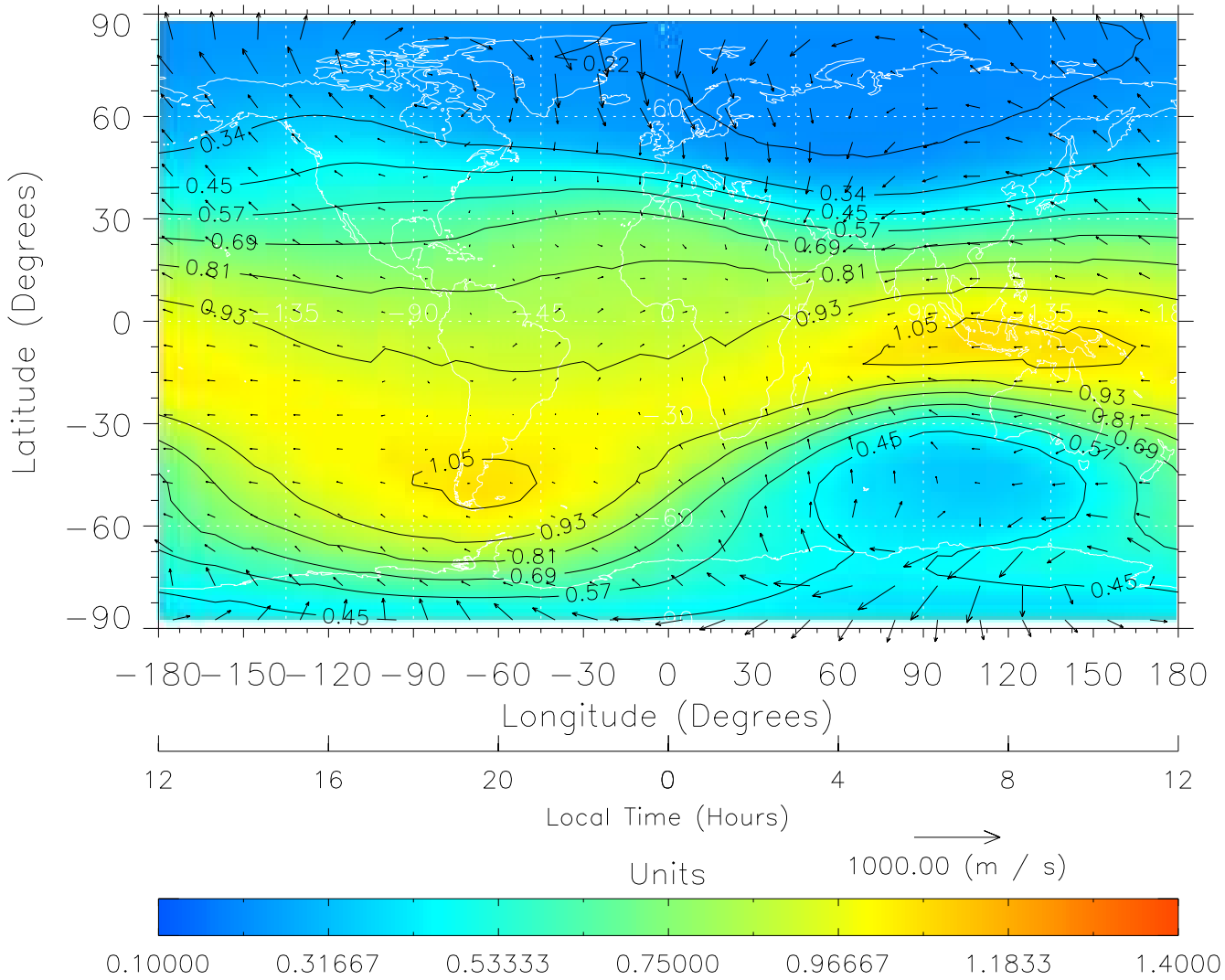


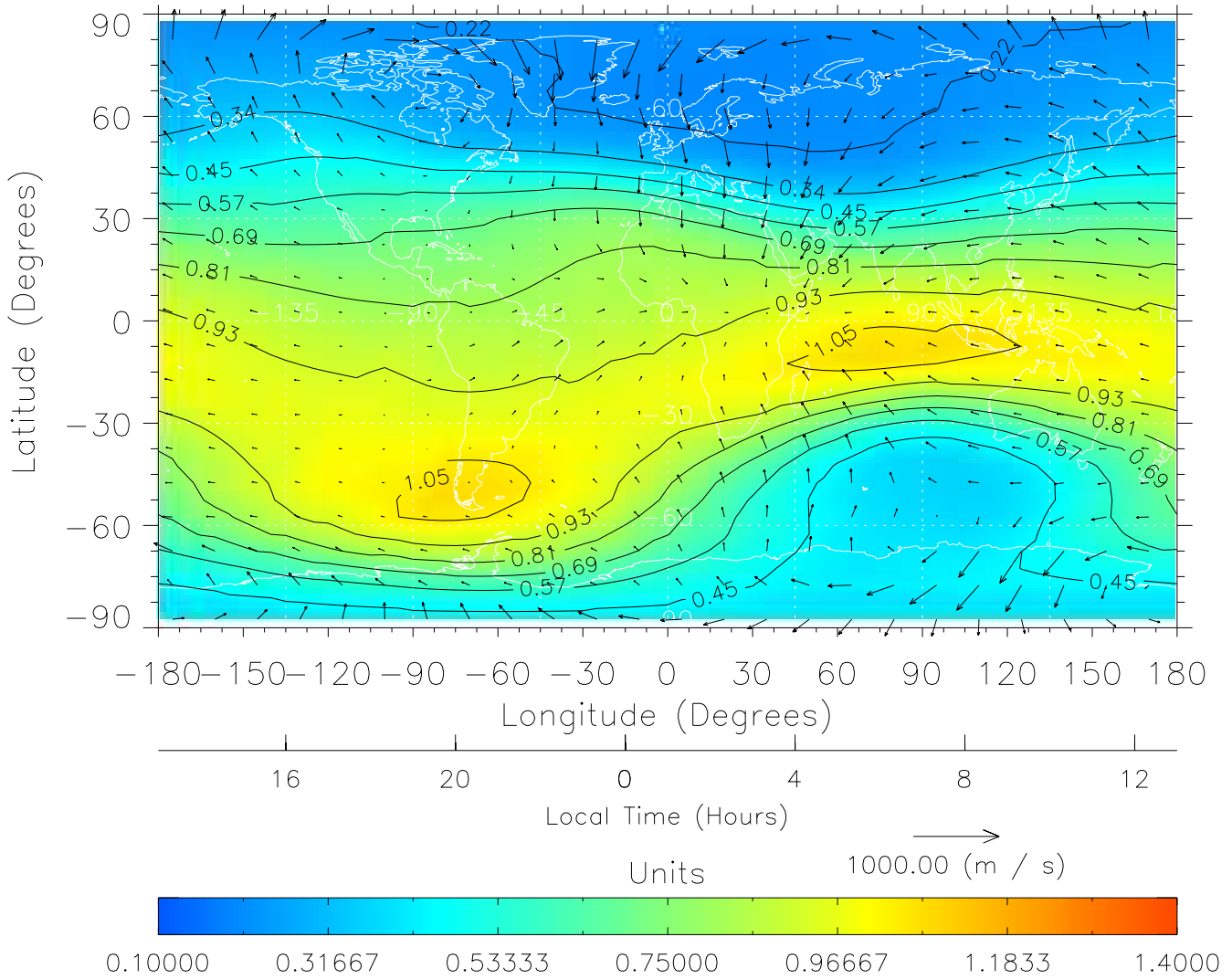
TIME-GCM MAP  $\Sigma O/N_2$  with Neutral Wind vectors  
ZP = 2.00 UT = 0.00 DOY = 110



Created: Thu Mar 10 15:08:25 2005

From: /tgcm/histories/secondary/April2002/April2002\_ASPENV1.6\_v1/20\_00.nc

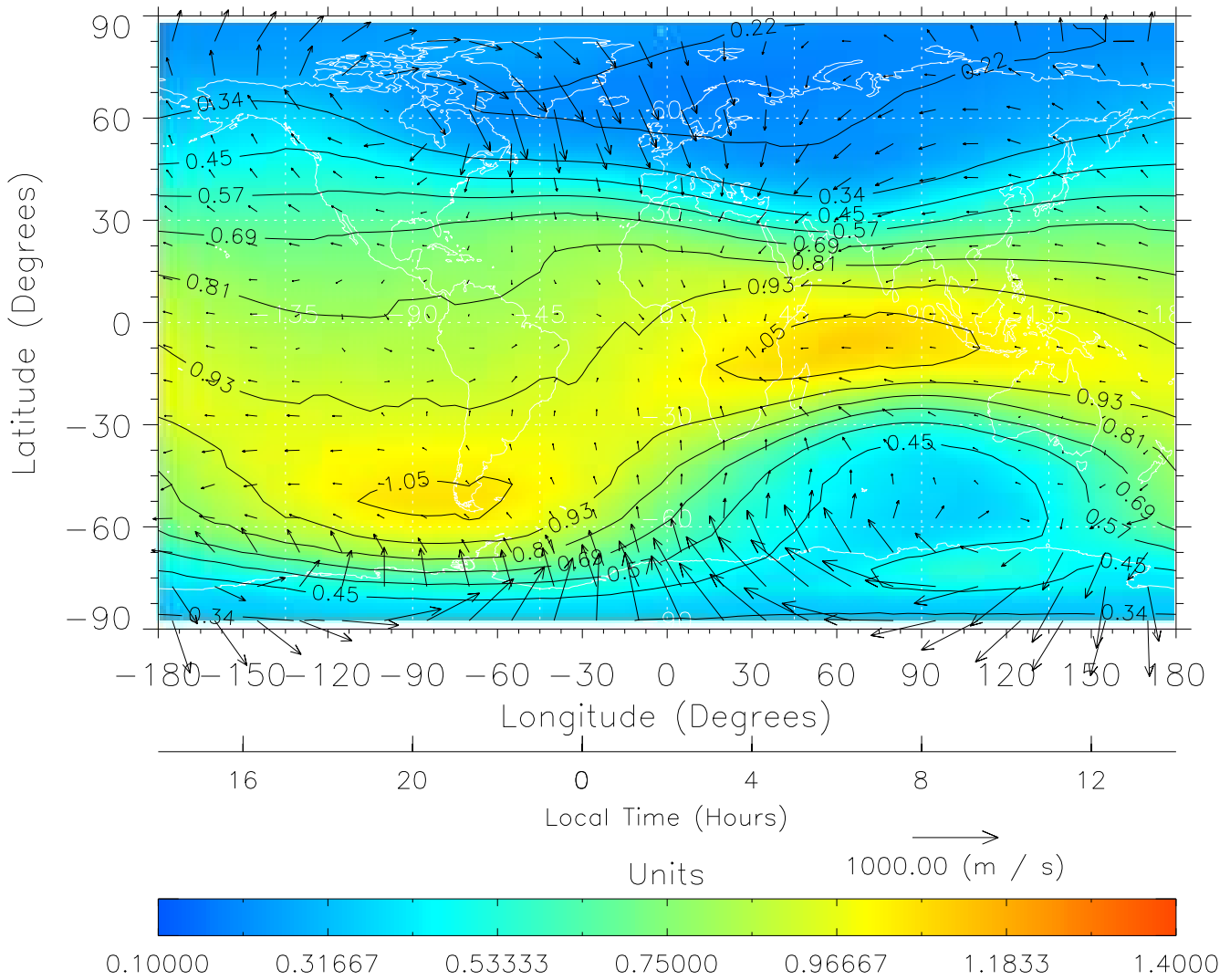
TIME-GCM MAP  $\Sigma O/N_2$  with Neutral Wind vectors  
ZP = 2.00 UT = 1.00 DOY = 110



Created: Thu Mar 10 15:08:25 2005

From: /tgcm/histories/secondary/April2002/April2002\_ASPENV1.6\_v1/20\_00.nc

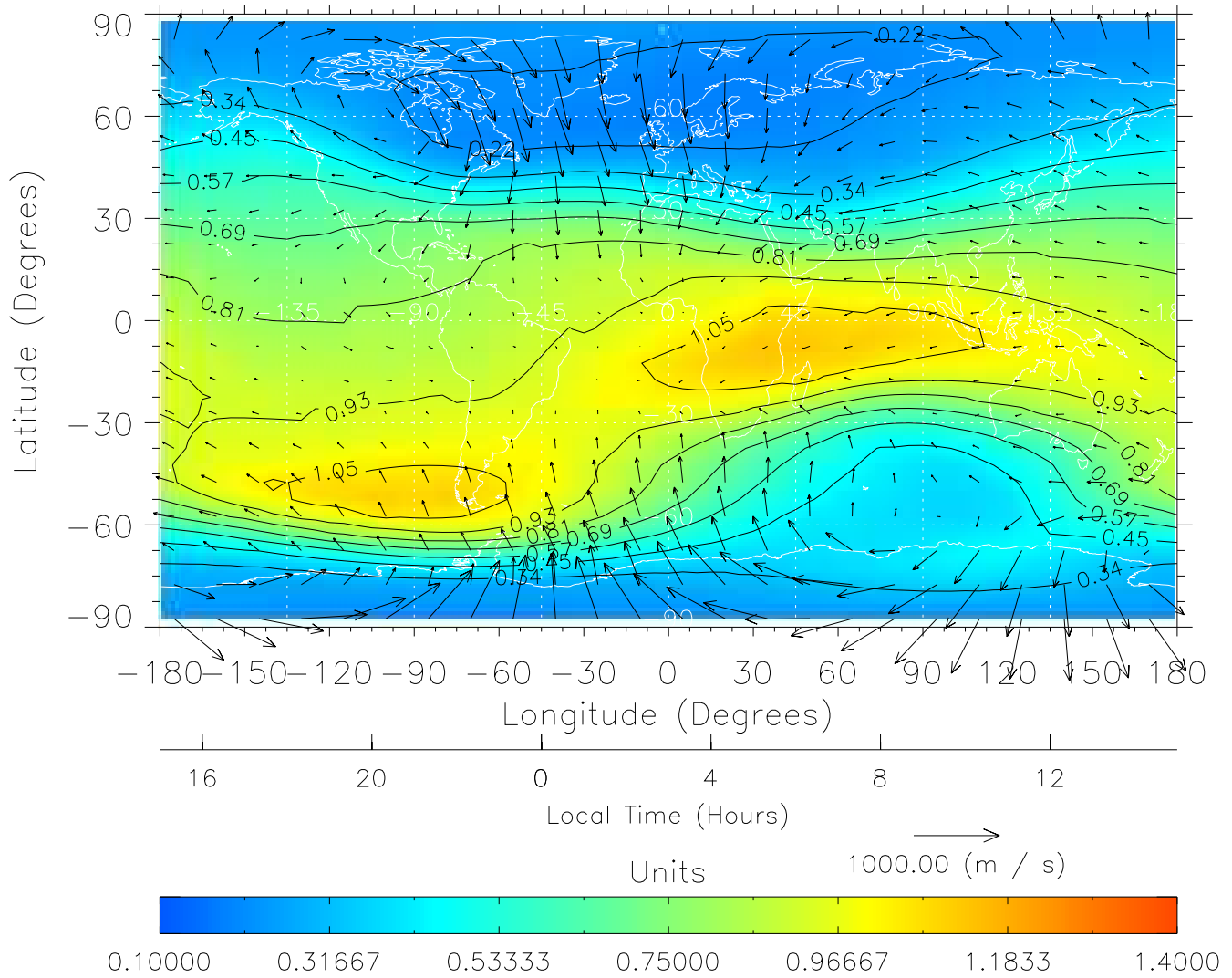
TIME-GCM MAP  $\Sigma O/N_2$  with Neutral Wind vectors  
ZP = 2.00 UT = 2.00 DOY = 110



Created: Thu Mar 10 15:08:26 2005

From: /tgcm/histories/secondary/April2002/April2002\_ASPENV1.6\_v1/20\_00.nc

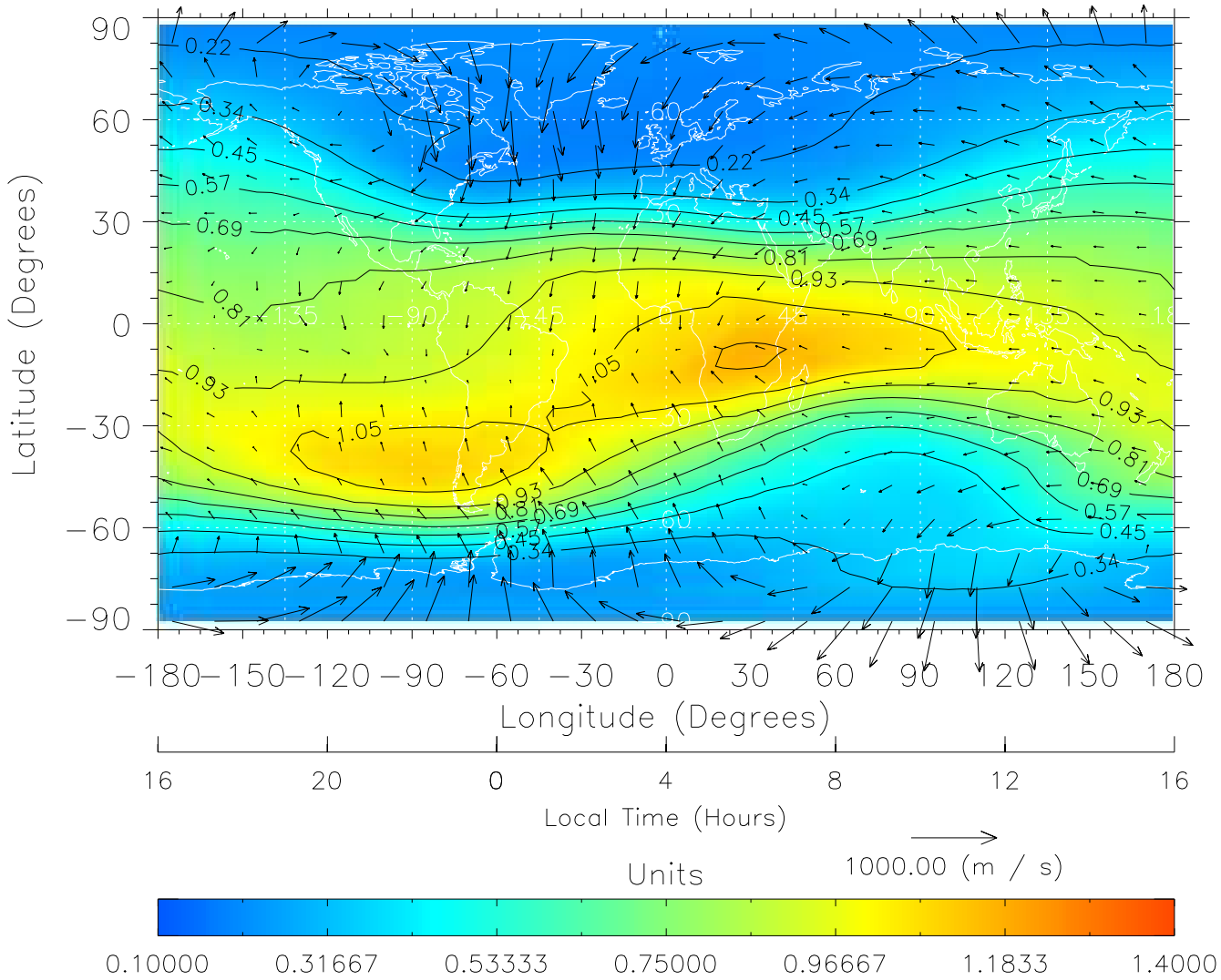
TIME-GCM MAP  $\Sigma O/N_2$  with Neutral Wind vectors  
ZP = 2.00 UT = 3.00 DOY = 110



Created: Thu Mar 10 15:08:26 2005

From: /tgcm/histories/secondary/April2002/April2002\_ASPENV1.6\_v1/20\_00.nc

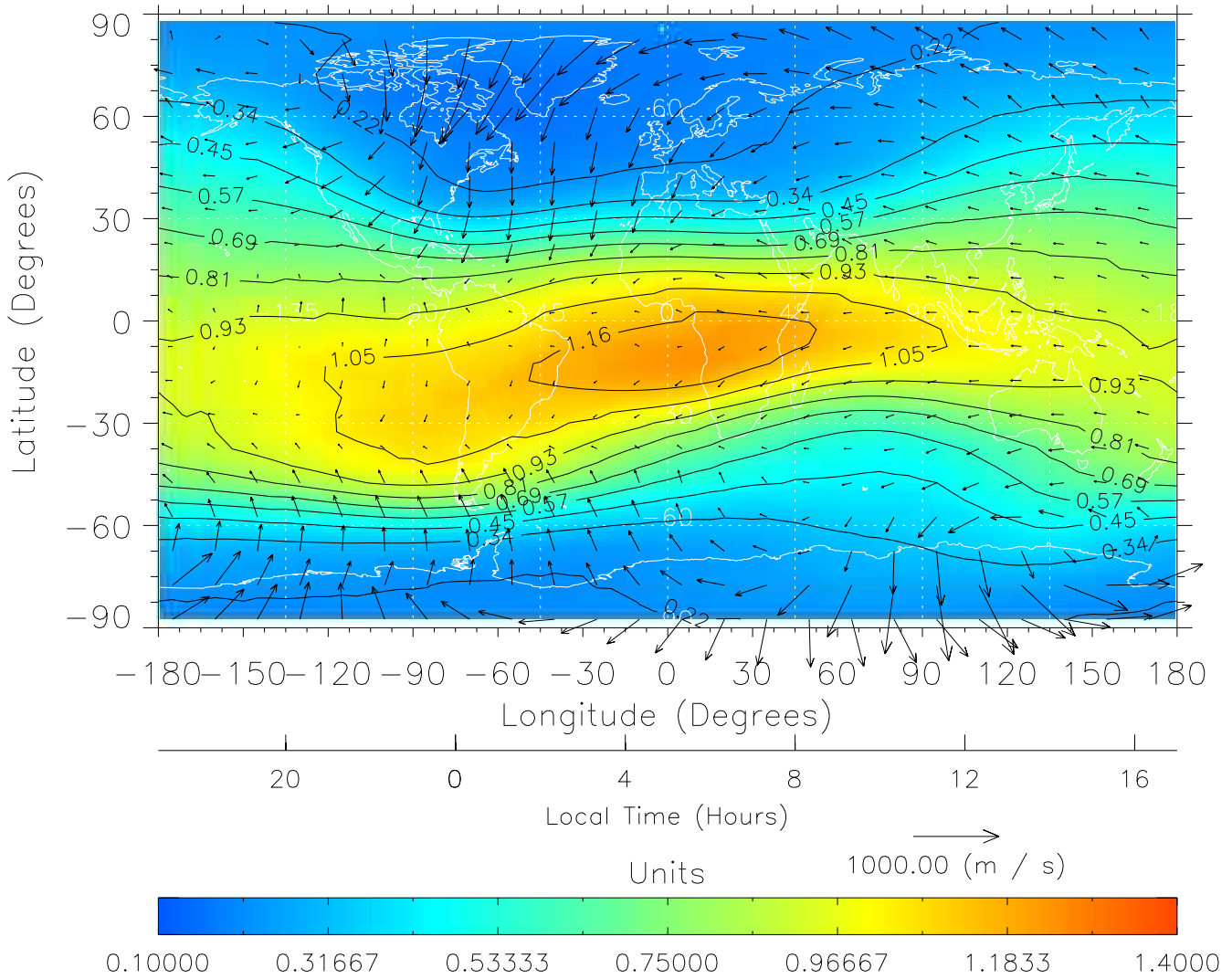
TIME-GCM MAP  $\Sigma O/N_2$  with Neutral Wind vectors  
ZP = 2.00 UT = 4.00 DOY = 110



Created: Thu Mar 10 15:08:26 2005

From: /tgcm/histories/secondary/April2002/April2002\_ASPENV1.6\_v1/20\_00.nc

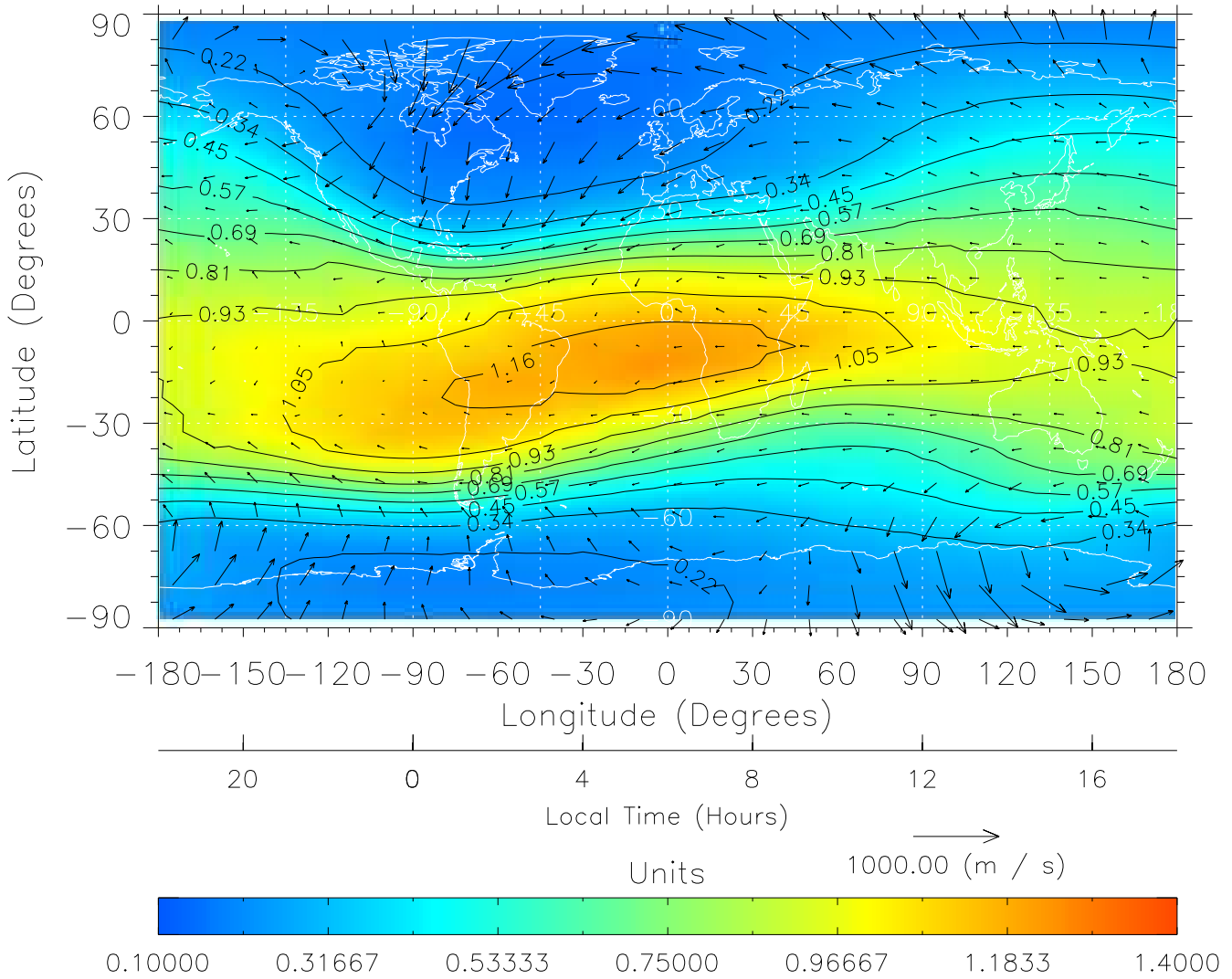
TIME-GCM MAP  $\Sigma O/N_2$  with Neutral Wind vectors  
ZP = 2.00 UT = 5.00 DOY = 110



Created: Thu Mar 10 15:08:27 2005

From: /tgcm/histories/secondary/April2002/April2002\_ASPENV1.6\_v1/20\_00.nc

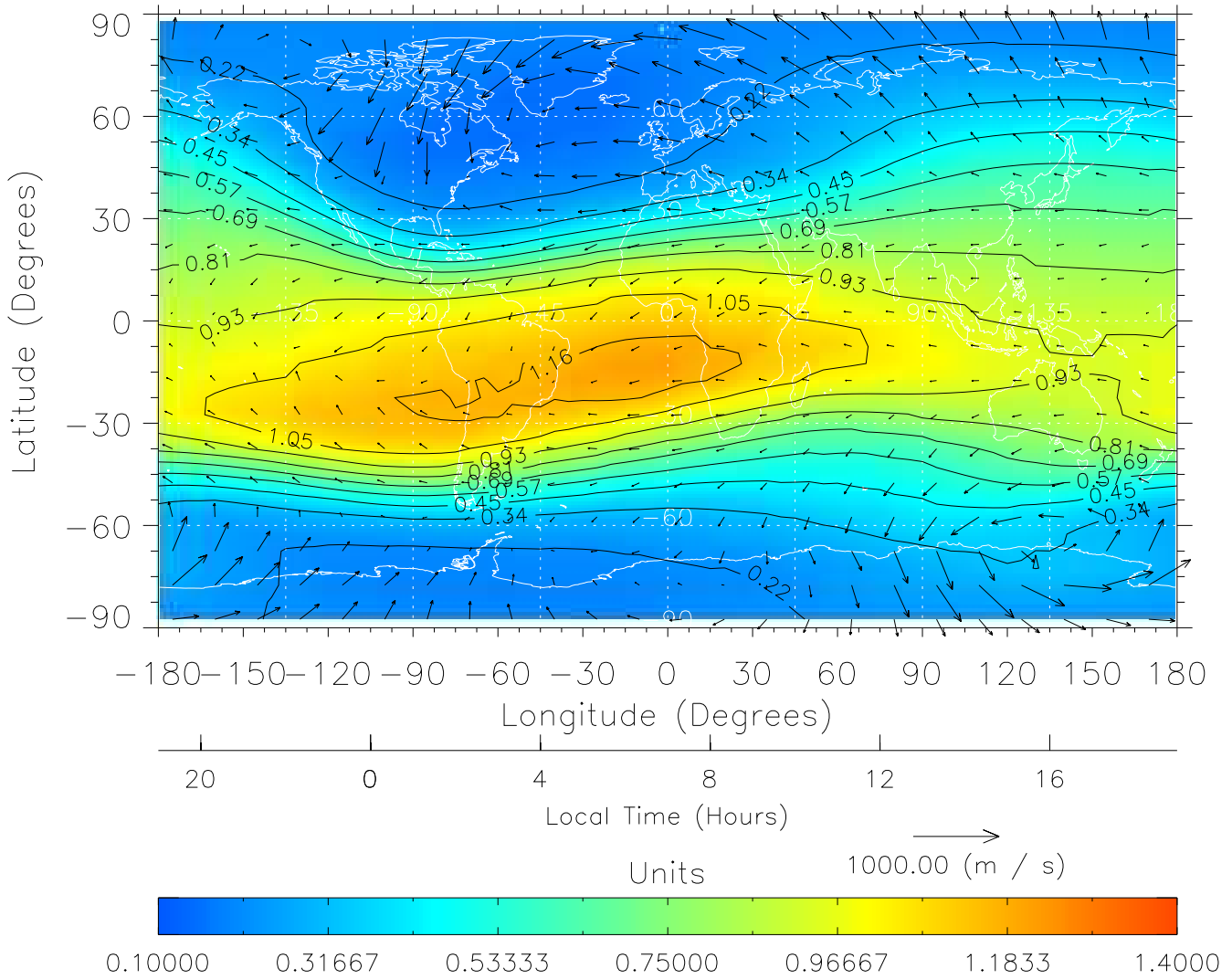
TIME-GCM MAP  $\Sigma O/N_2$  with Neutral Wind vectors  
 ZP = 2.00 UT = 6.00 DOY = 110



Created: Thu Mar 10 15:08:27 2005

From: /tgcm/histories/secondary/April2002/April2002\_ASPENV1.6\_v1/20\_00.nc

TIME-GCM MAP  $\Sigma O/N_2$  with Neutral Wind vectors  
ZP = 2.00 UT = 7.00 DOY = 110

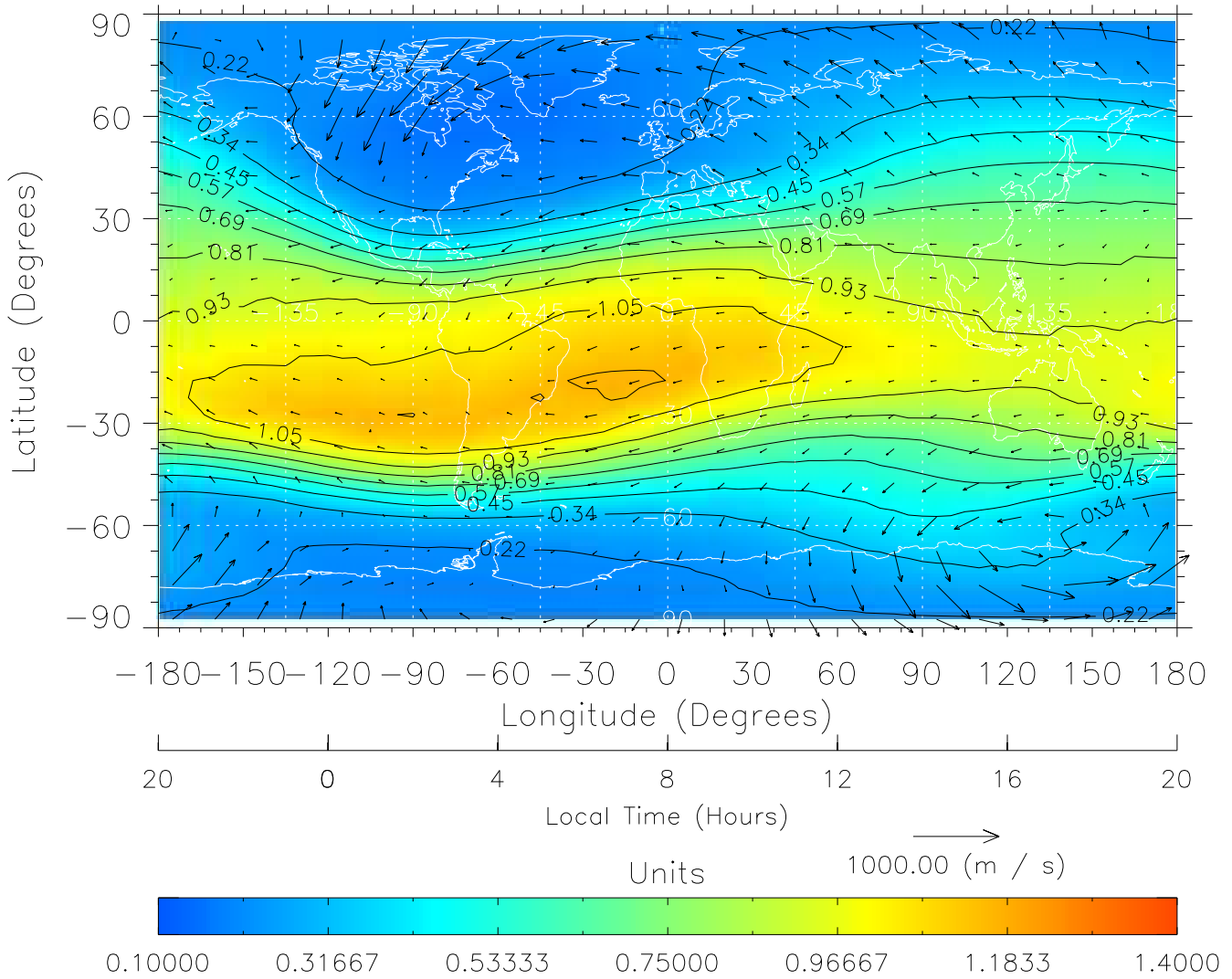


Created: Thu Mar 10 15:08:27 2005

From: /tgcm/histories/secondary/April2002/April2002\_ASPENV1.6\_v1/20\_00.nc



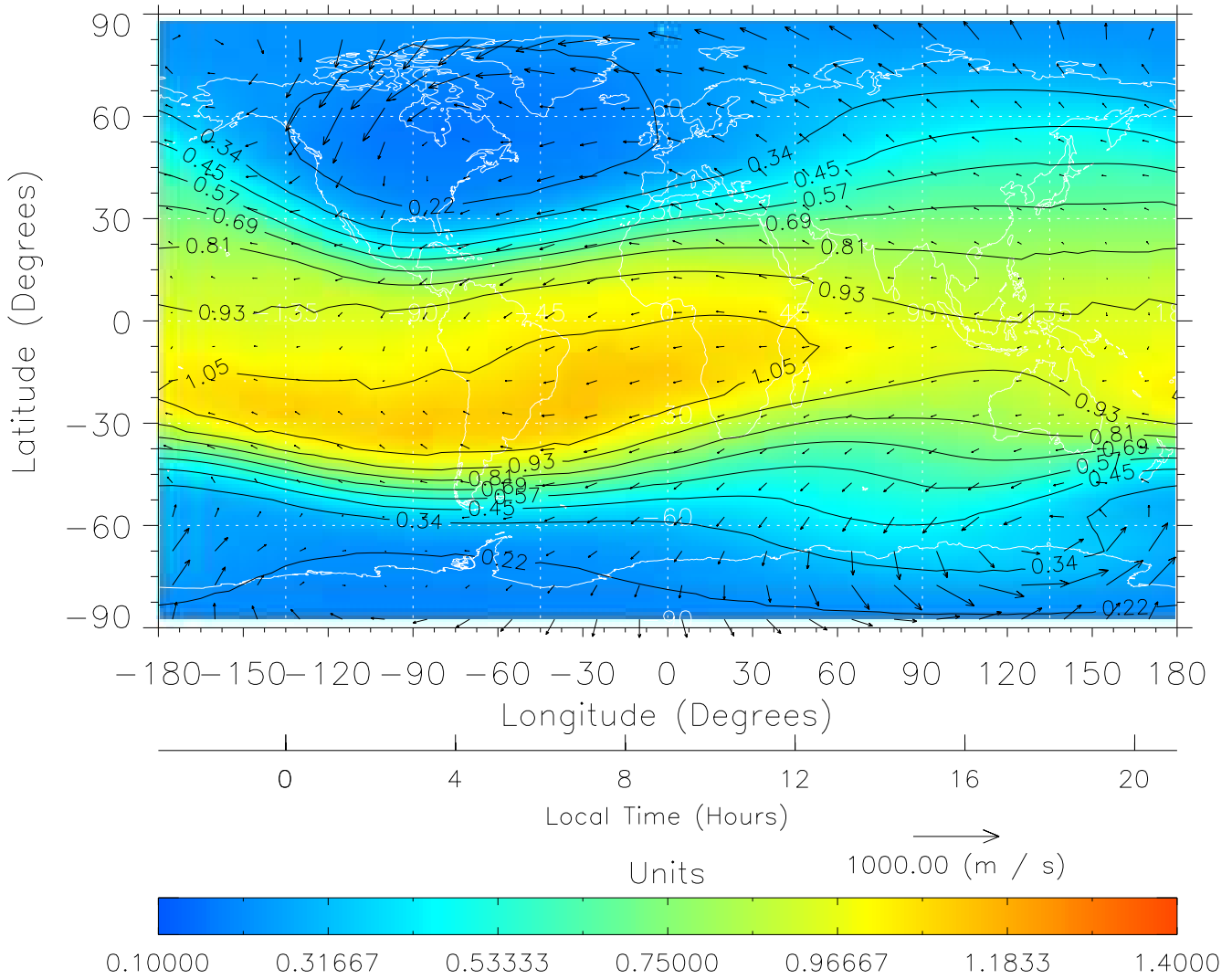
TIME-GCM MAP  $\Sigma O/N_2$  with Neutral Wind vectors  
ZP = 2.00 UT = 8.00 DOY = 110



Created: Thu Mar 10 15:08:28 2005

From: /tgcm/histories/secondary/April2002/April2002\_ASPENV1.6\_v1/20\_00.nc

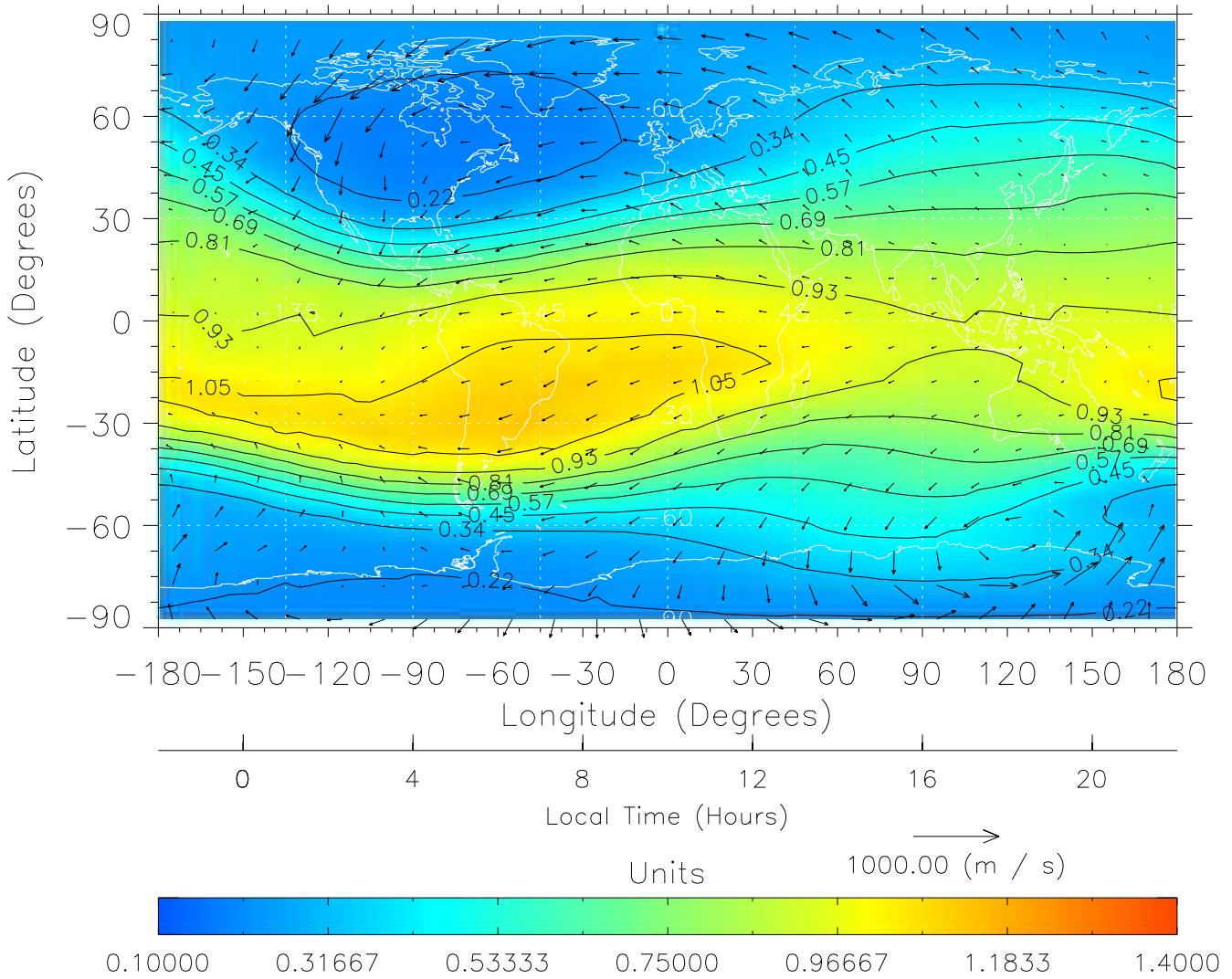
TIME-GCM MAP  $\Sigma O/N_2$  with Neutral Wind vectors  
ZP = 2.00 UT = 9.00 DOY = 110



Created: Thu Mar 10 15:08:28 2005

From: /tgcm/histories/secondary/April2002/April2002\_ASPENV1.6\_v1/20\_00.nc

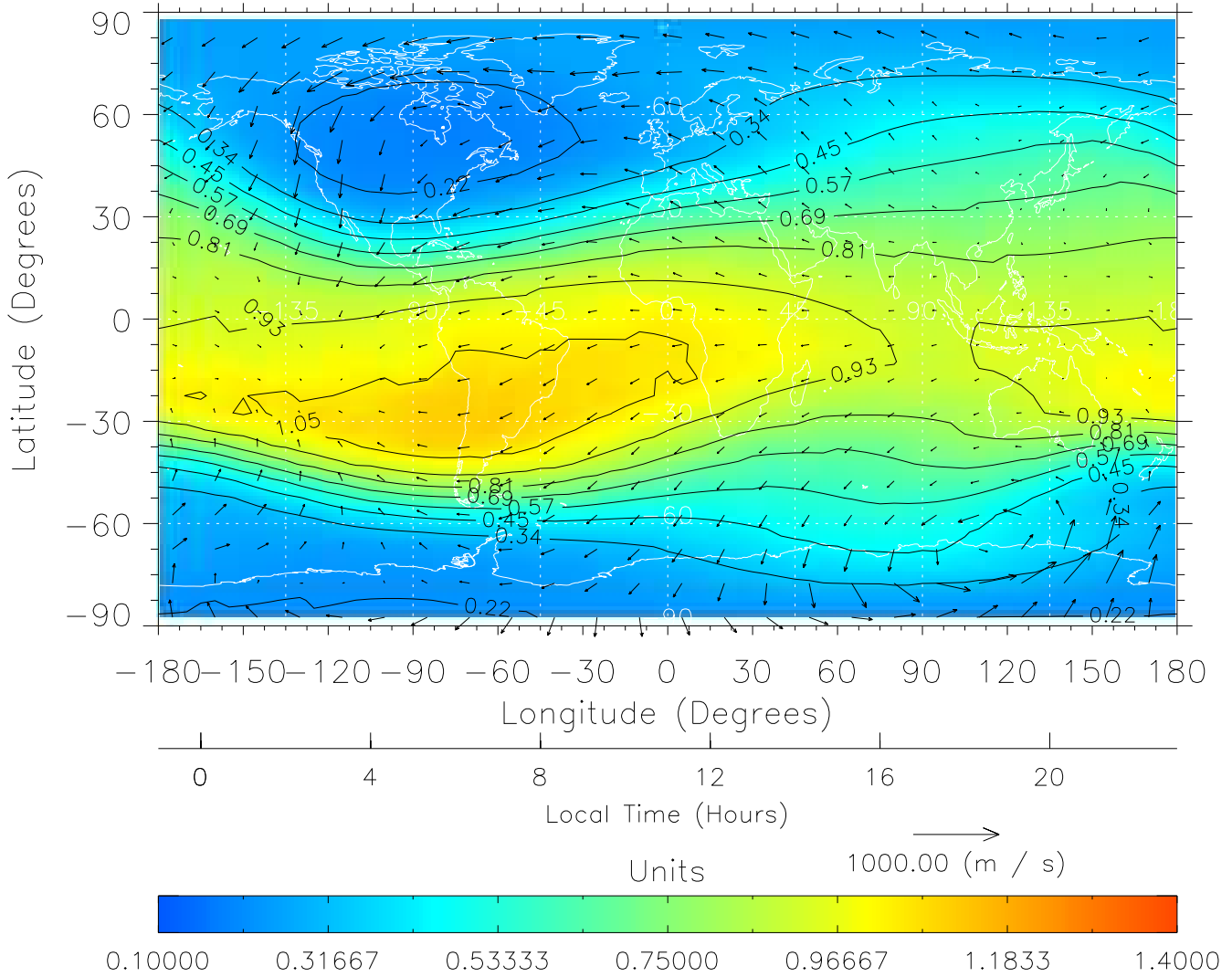
TIME-GCM MAP  $\Sigma O/N_2$  with Neutral Wind vectors  
ZP = 2.00 UT = 10.00 DOY = 110



Created: Thu Mar 10 15:08:28 2005

From: /tgcm/histories/secondary/April2002/April2002\_ASPENV1.6\_v1/20\_00.nc

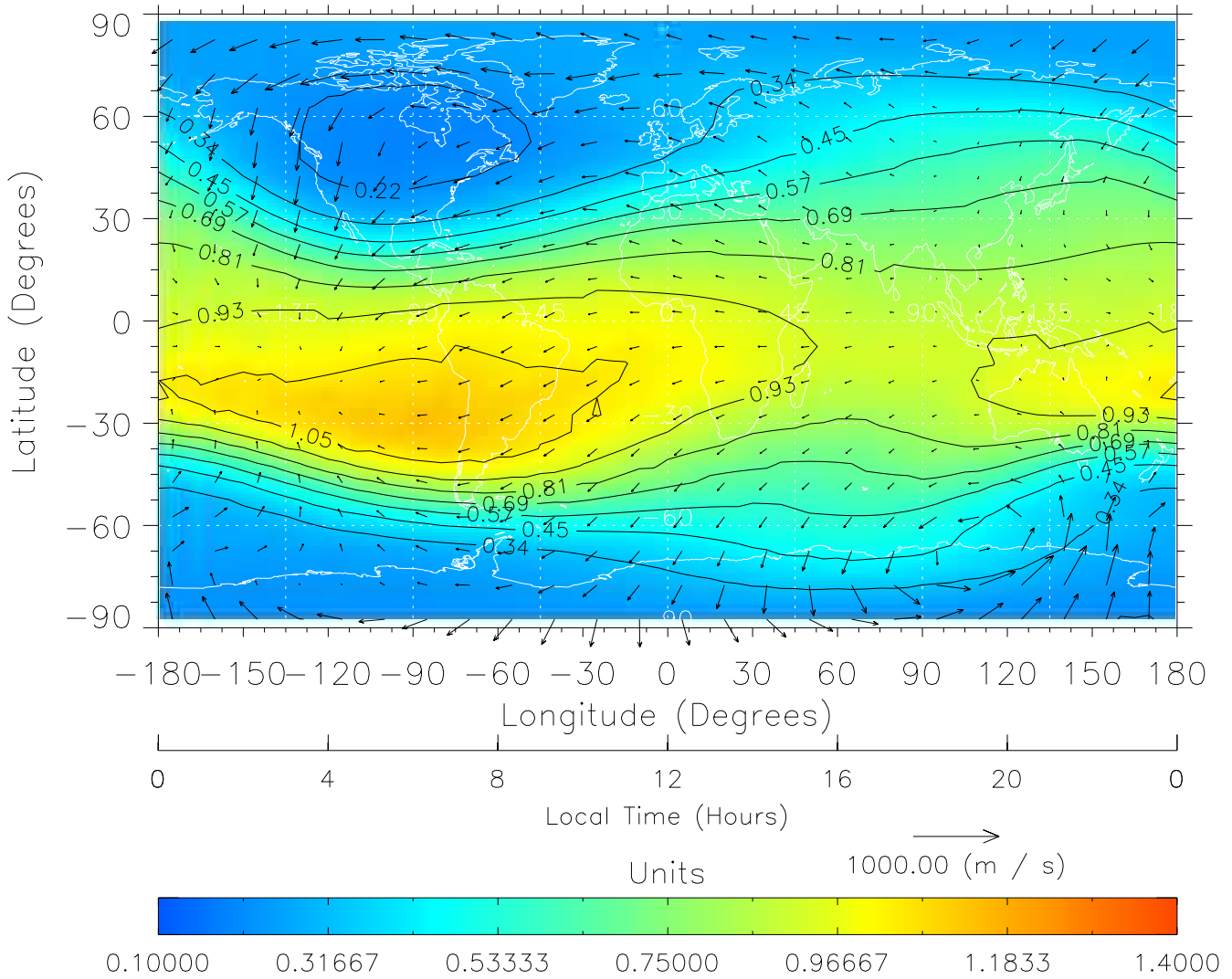
TIME-GCM MAP  $\Sigma O/N_2$  with Neutral Wind vectors  
ZP = 2.00 UT = 11.00 DOY = 110



Created: Thu Mar 10 15:08:29 2005

From: /tgcm/histories/secondary/April2002/April2002\_ASPENV1.6\_v1/20\_00.nc

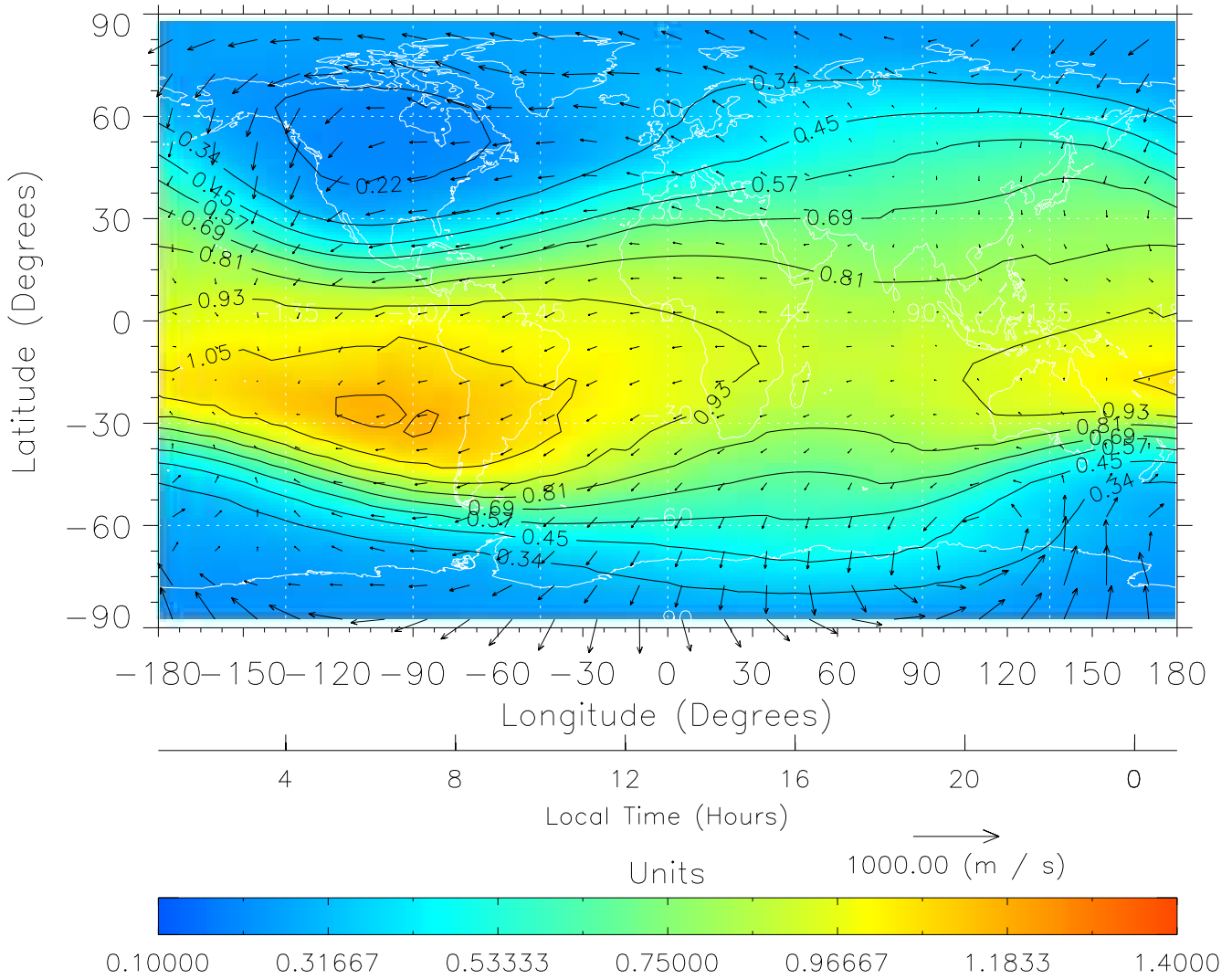
TIME-GCM MAP  $\Sigma O/N_2$  with Neutral Wind vectors  
ZP = 2.00 UT = 12.00 DOY = 110



Created: Thu Mar 10 15:08:29 2005

From: /tgcm/histories/secondary/April2002/April2002\_ASPENV1.6\_v1/20\_12.nc

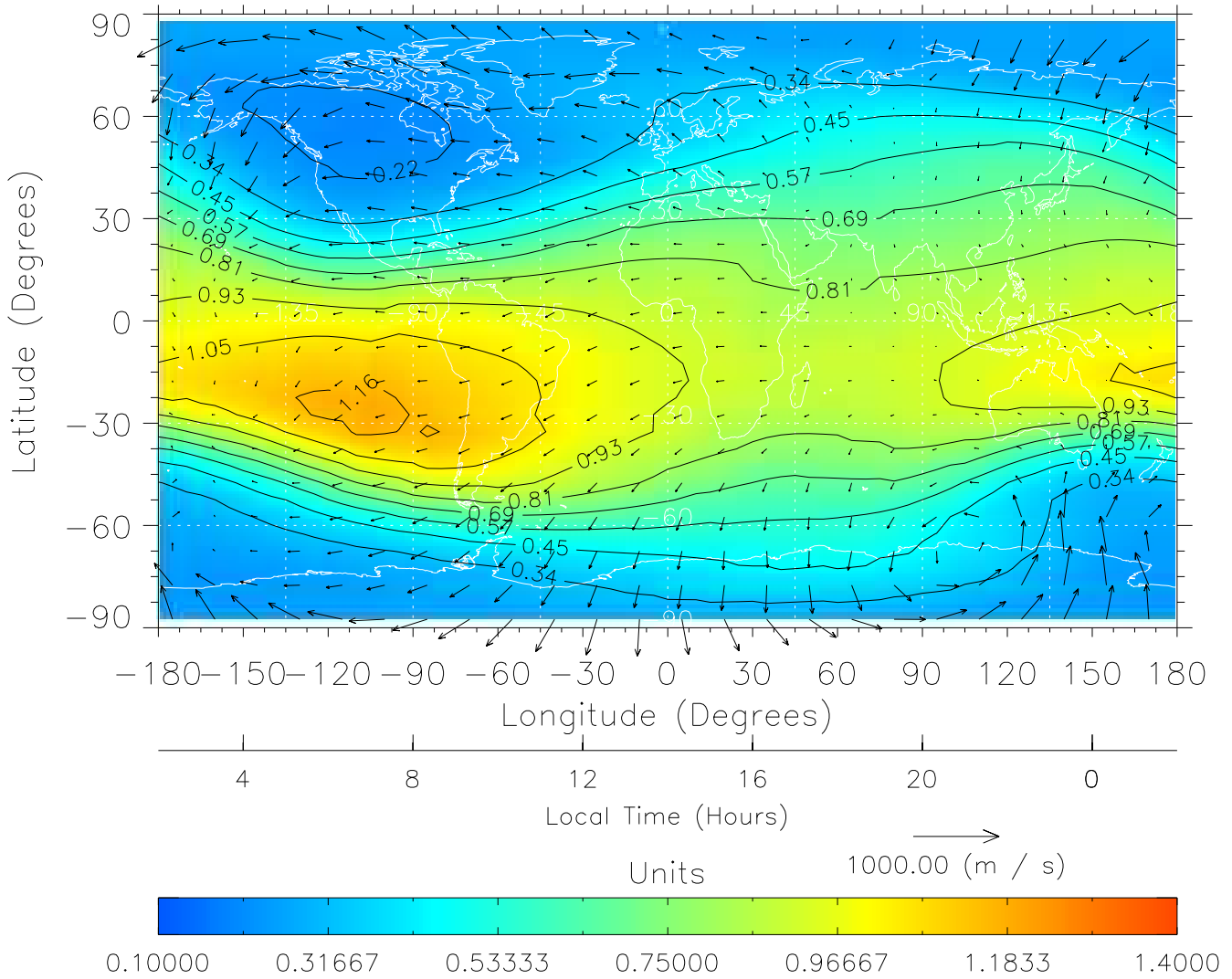
TIME-GCM MAP  $\Sigma O/N_2$  with Neutral Wind vectors  
ZP = 2.00 UT = 13.00 DOY = 110



Created: Thu Mar 10 15:08:29 2005

From: /tgcm/histories/secondary/April2002/April2002\_ASPENV1.6\_v1/20\_12.nc

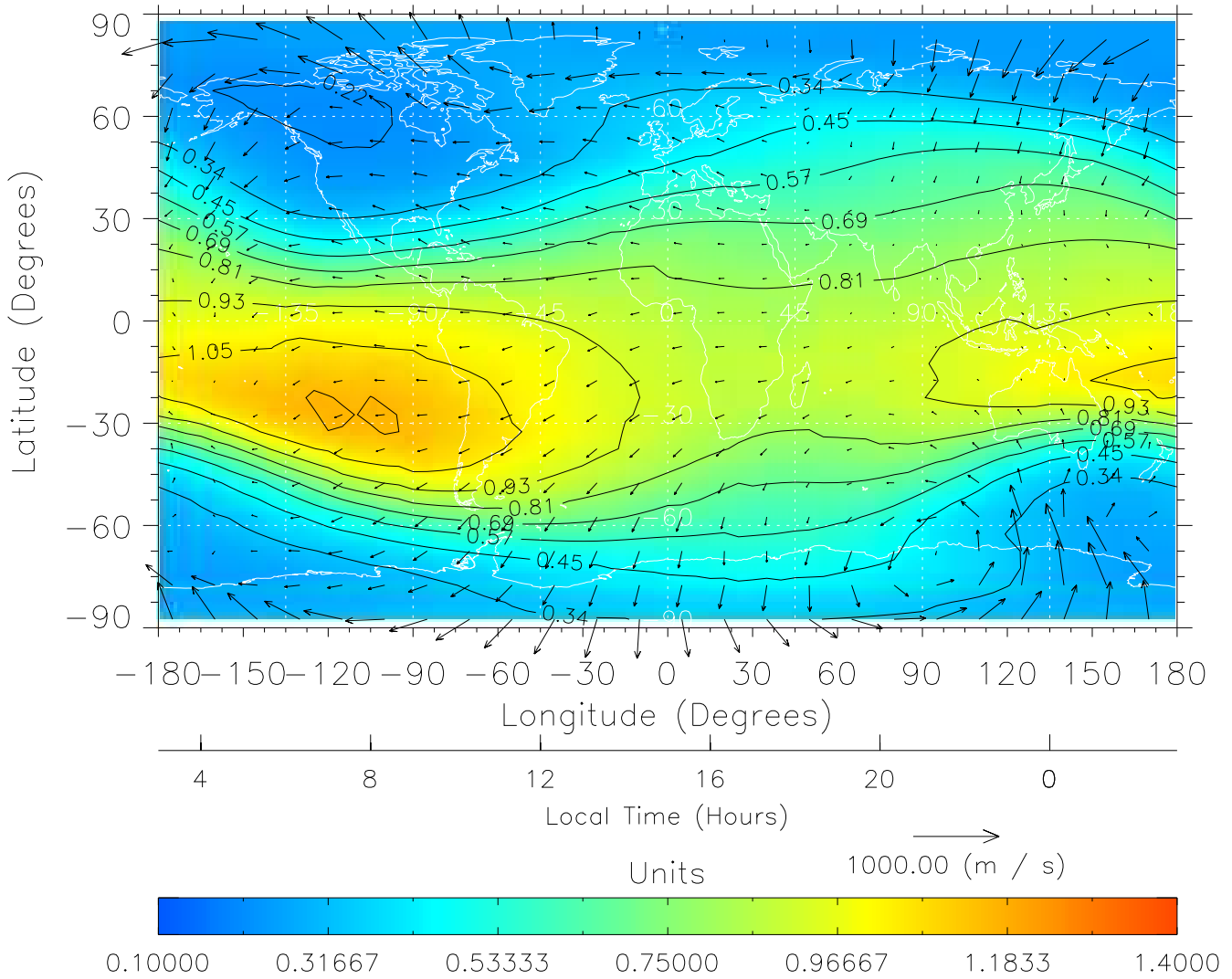
TIME-GCM MAP  $\Sigma O/N_2$  with Neutral Wind vectors  
 ZP = 2.00 UT = 14.00 DOY = 110



Created: Thu Mar 10 15:08:30 2005

From: /tgcm/histories/secondary/April2002/April2002\_ASPENV1.6\_v1/20\_12.nc

TIME-GCM MAP  $\Sigma O/N_2$  with Neutral Wind vectors  
ZP = 2.00 UT = 15.00 DOY = 110

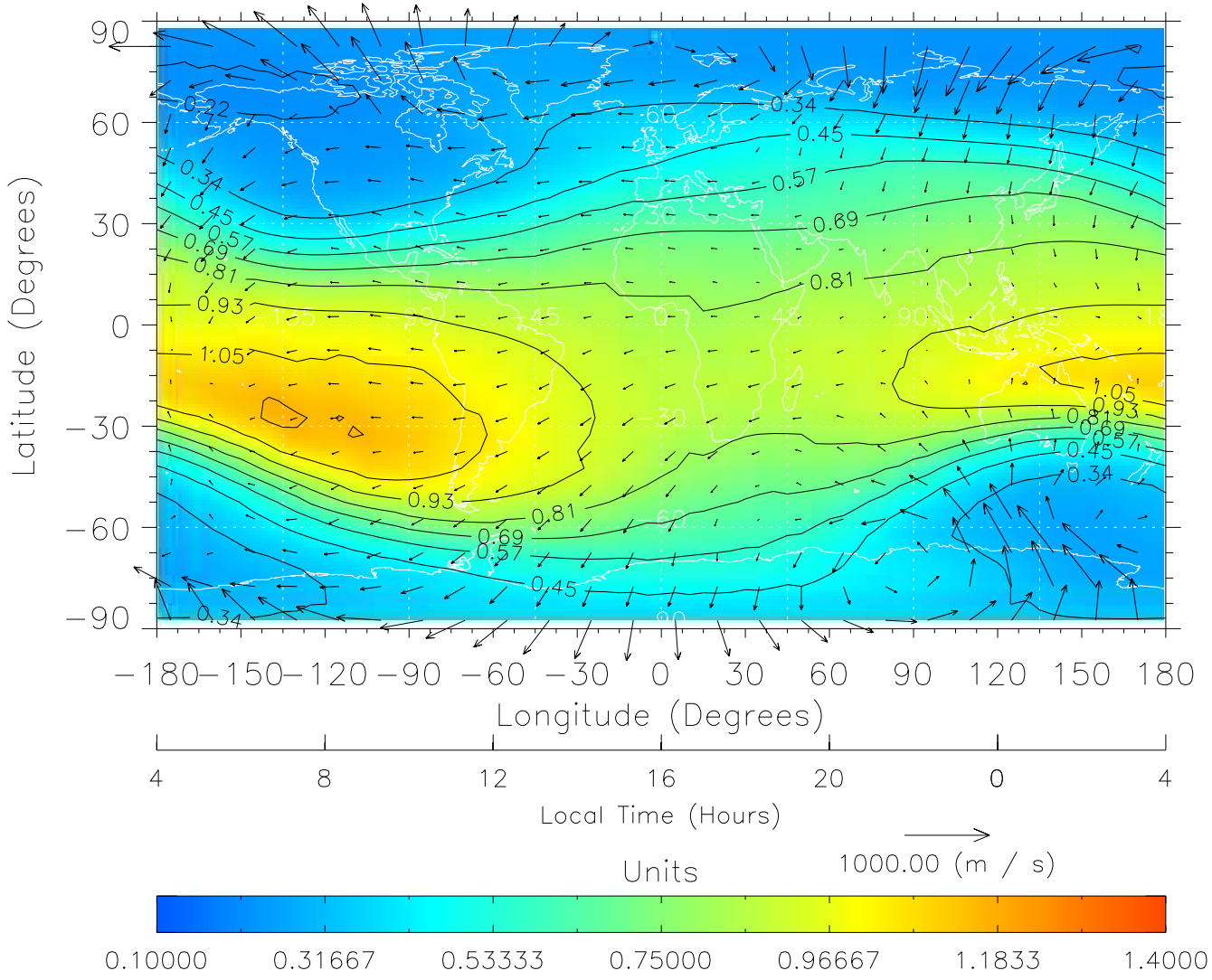


Created: Thu Mar 10 15:08:30 2005

From: /tgcm/histories/secondary/April2002/April2002\_ASPENV1.6\_v1/20\_12.nc



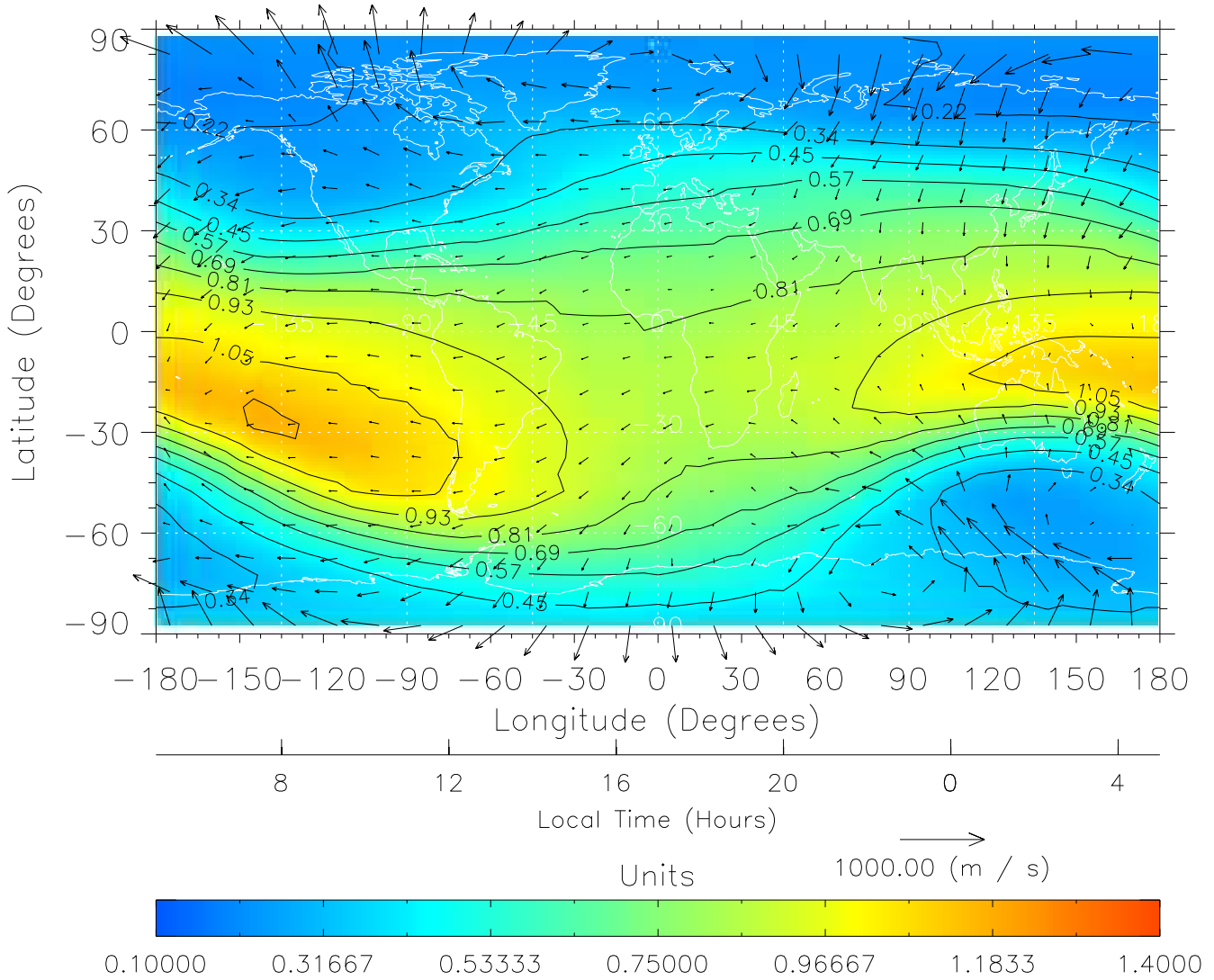
TIME-GCM MAP  $\Sigma O/N_2$  with Neutral Wind vectors  
ZP = 2.00 UT = 16.00 DOY = 110



Created: Thu Mar 10 15:08:30 2005

From: /tgcm/histories/secondary/April2002/April2002\_ASPENV1.6\_v1/20\_12.nc

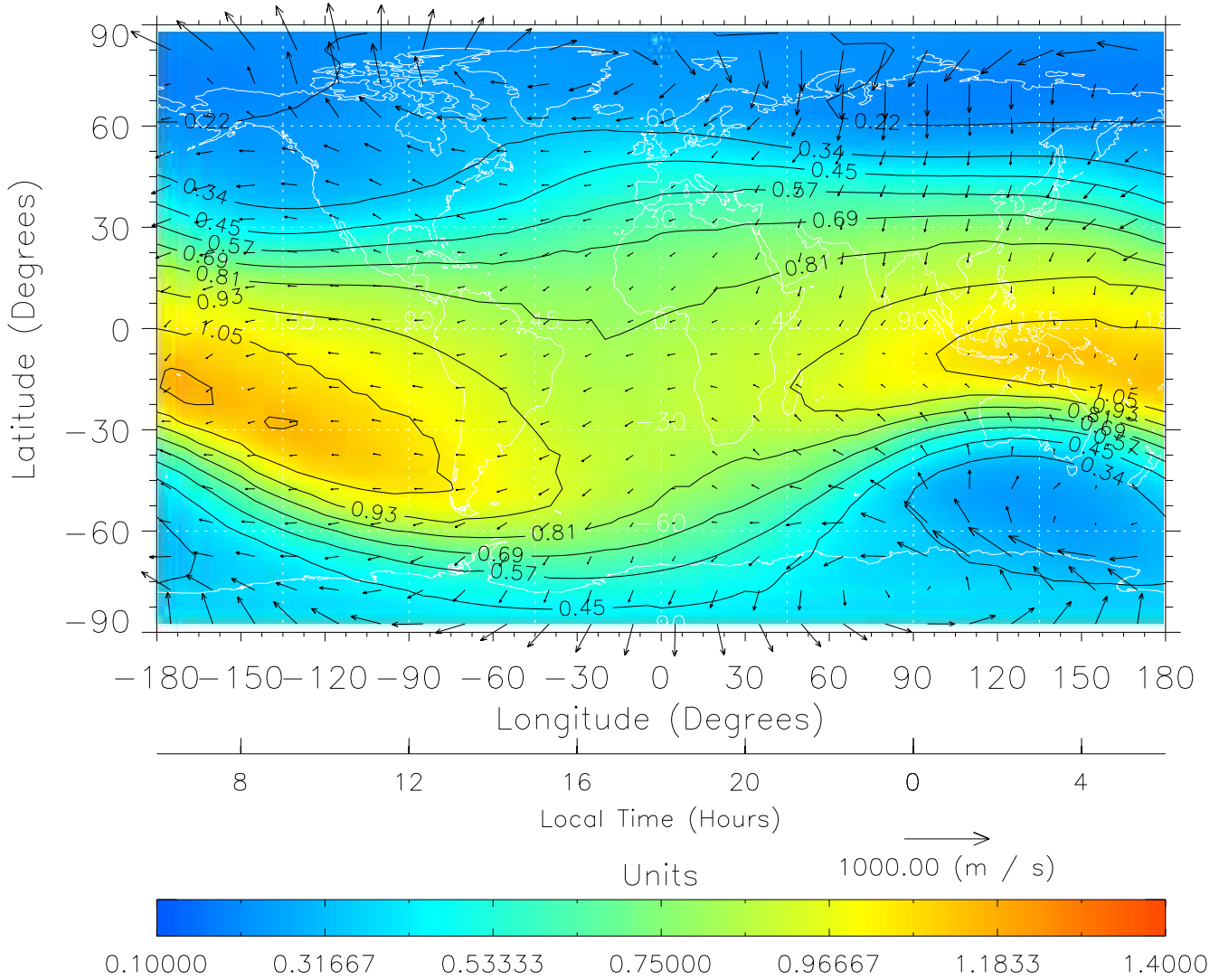
TIME-GCM MAP  $\Sigma O/N_2$  with Neutral Wind vectors  
ZP = 2.00 UT = 17.00 DOY = 110



Created: Thu Mar 10 15:08:31 2005

From: /tgcm/histories/secondary/April2002/April2002\_ASPENV1.6\_v1/20\_12.nc

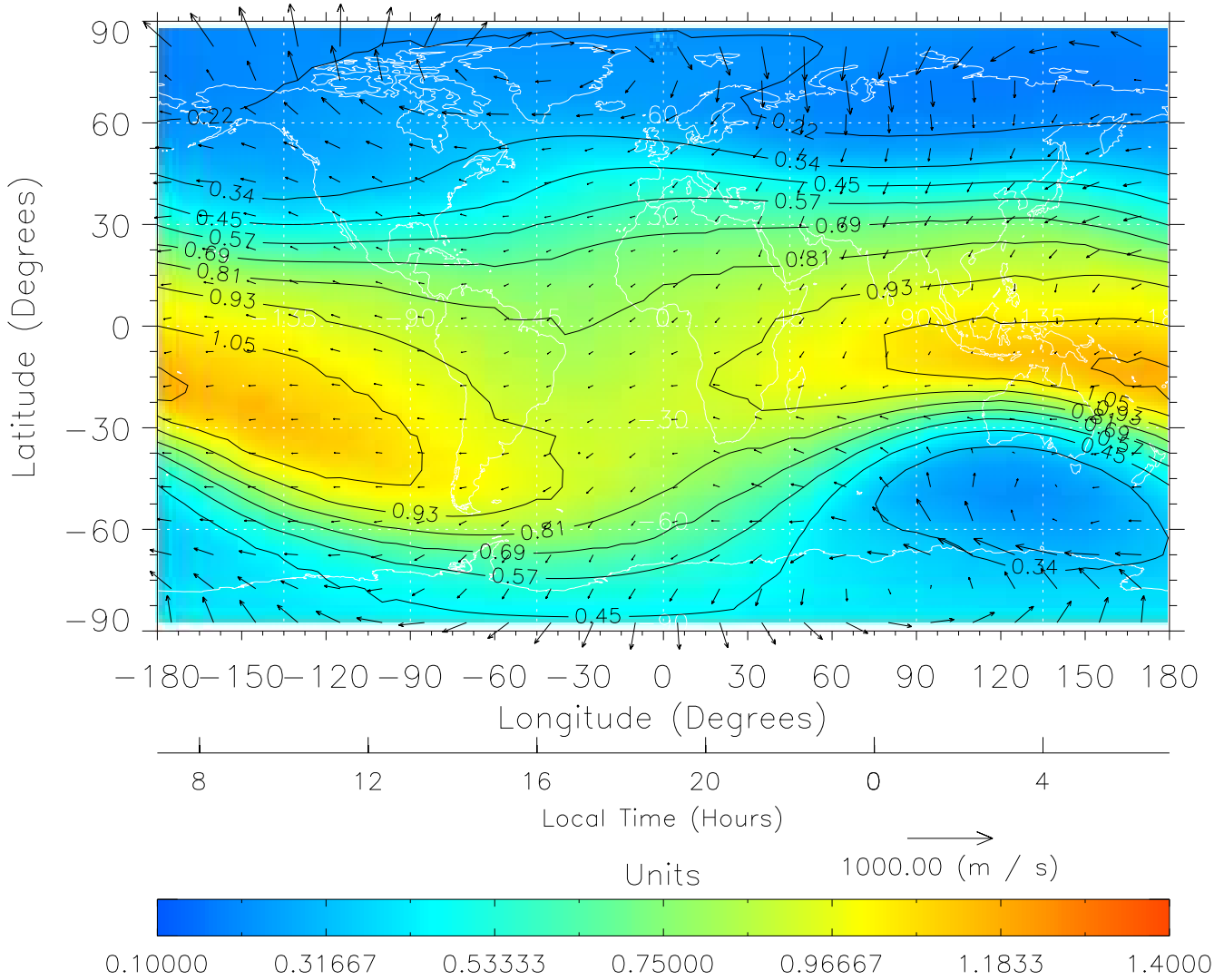
TIME-GCM MAP  $\Sigma O/N_2$  with Neutral Wind vectors  
ZP = 2.00 UT = 18.00 DOY = 110



Created: Thu Mar 10 15:08:31 2005

From: /tgcm/histories/secondary/April2002/April2002\_ASPENV1.6\_v1/20\_12.nc

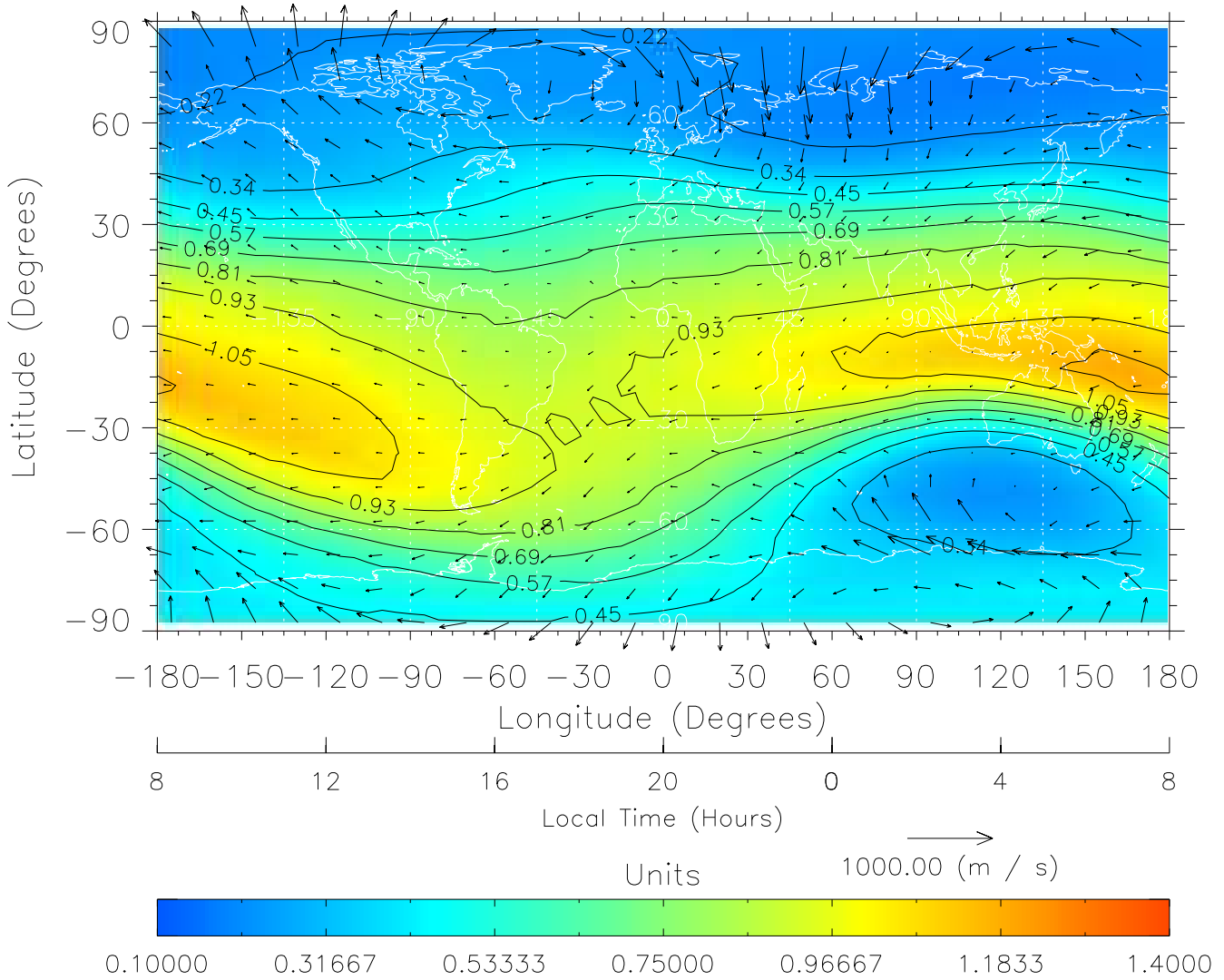
TIME-GCM MAP  $\Sigma O/N_2$  with Neutral Wind vectors  
ZP = 2.00 UT = 19.00 DOY = 110



Created: Thu Mar 10 15:08:32 2005

From: /tgcm/histories/secondary/April2002/April2002\_ASPENV1.6\_v1/20\_12.nc

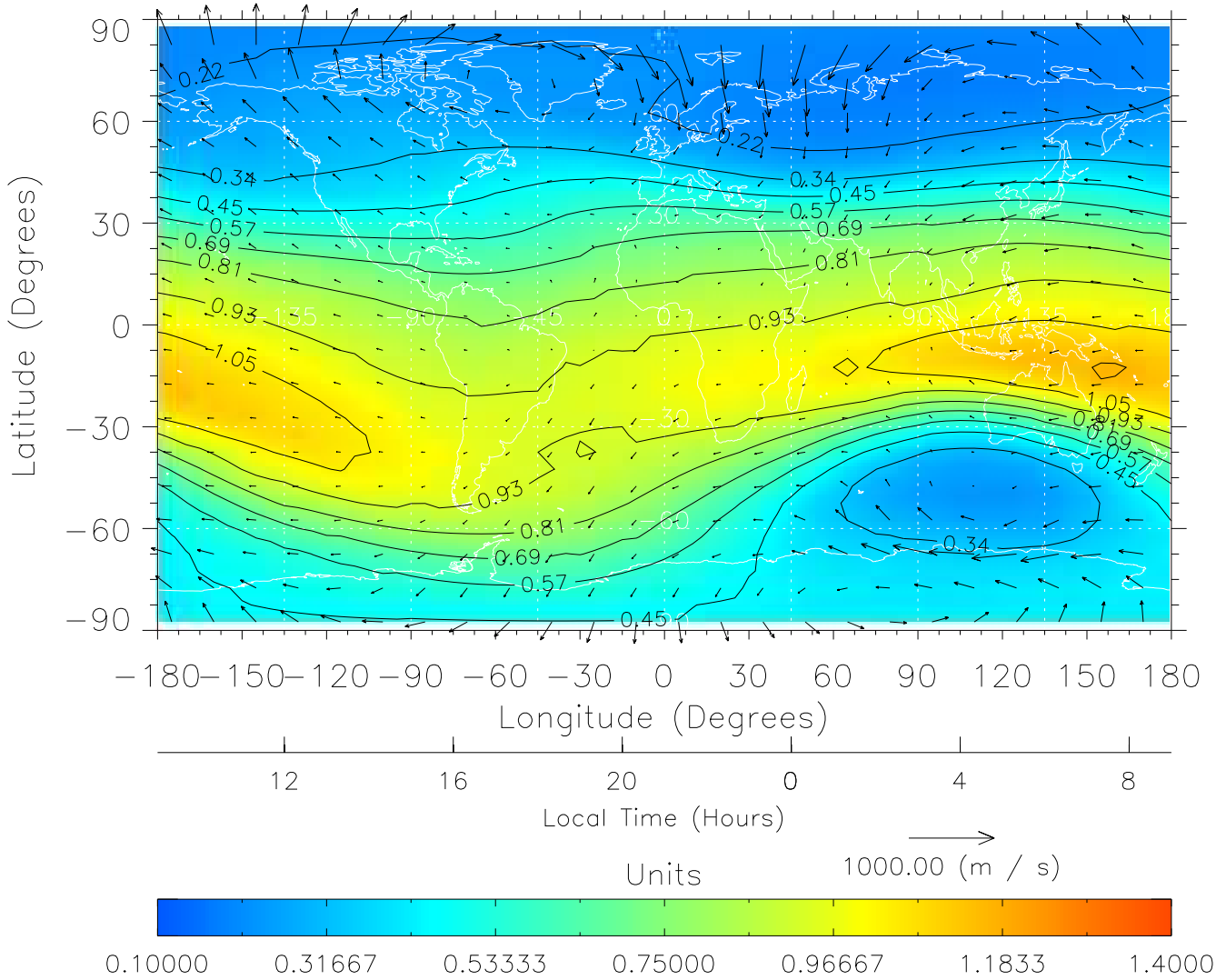
TIME-GCM MAP  $\Sigma O/N_2$  with Neutral Wind vectors  
ZP = 2.00 UT = 20.00 DOY = 110



Created: Thu Mar 10 15:08:32 2005

From: /tgcm/histories/secondary/April2002/April2002\_ASPENV1.6\_v1/20\_12.nc

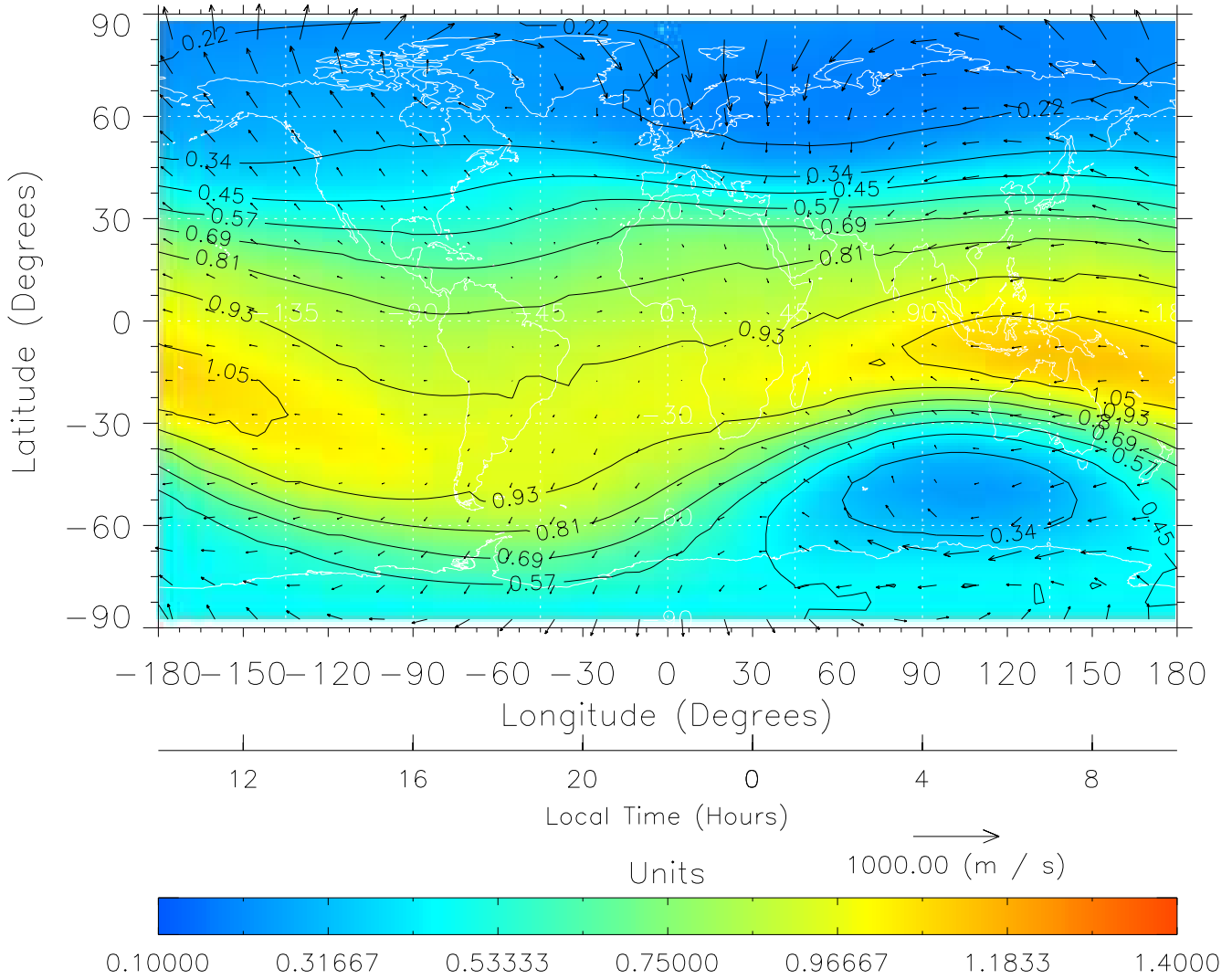
TIME-GCM MAP  $\Sigma O/N_2$  with Neutral Wind vectors  
ZP = 2.00 UT = 21.00 DOY = 110



Created: Thu Mar 10 15:08:32 2005

From: /tgcm/histories/secondary/April2002/April2002\_ASPENV1.6\_v1/20\_12.nc

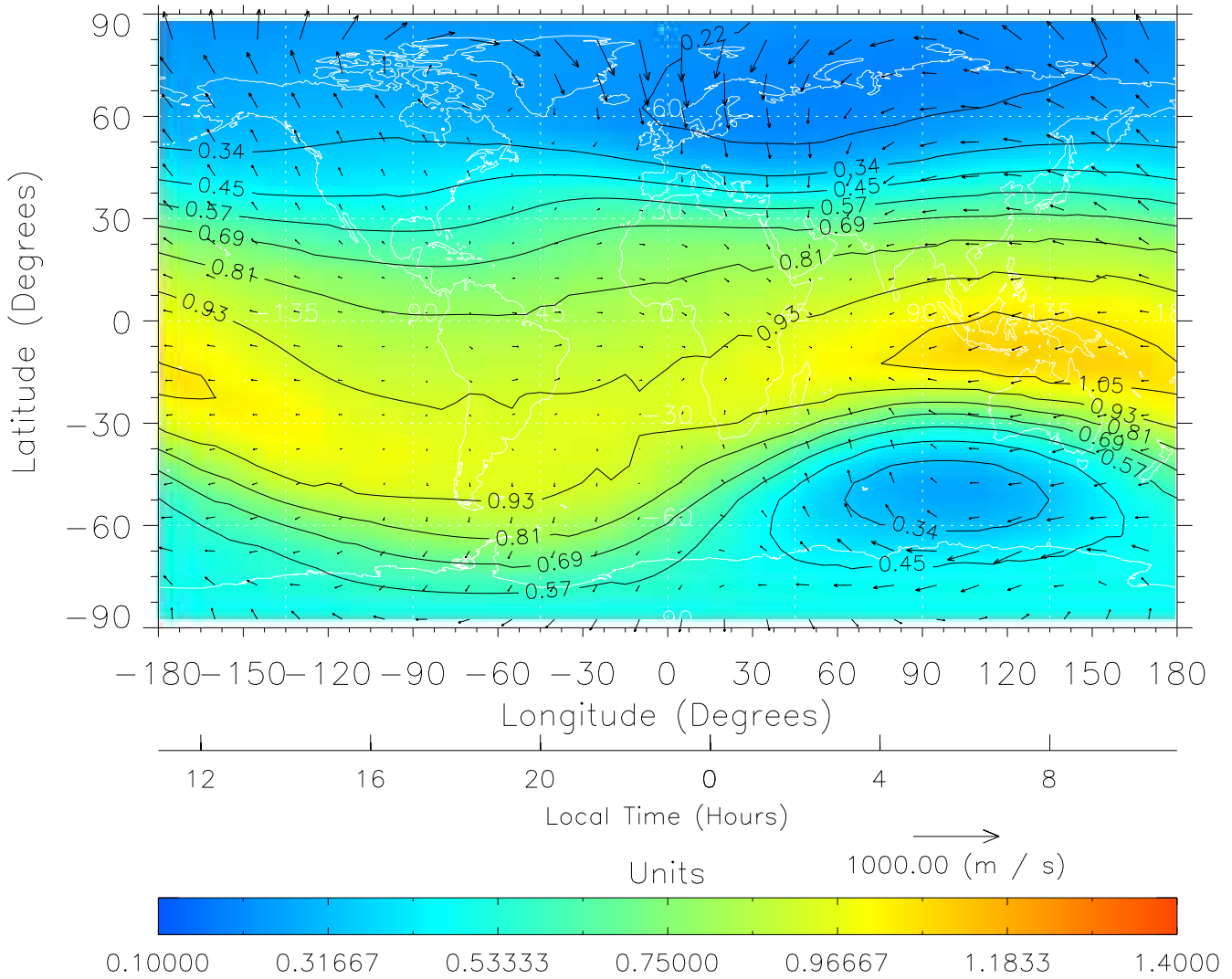
TIME-GCM MAP  $\Sigma O/N_2$  with Neutral Wind vectors  
ZP = 2.00 UT = 22.00 DOY = 110



Created: Thu Mar 10 15:08:33 2005

From: /tgcm/histories/secondary/April2002/April2002\_ASPENV1.6\_v1/20\_12.nc

TIME-GCM MAP  $\Sigma O/N_2$  with Neutral Wind vectors  
 ZP = 2.00 UT = 23.00 DOY = 110



Created: Thu Mar 10 15:08:33 2005

From: /tgcm/histories/secondary/April2002/April2002\_ASPENV1.6\_v1/20\_12.nc