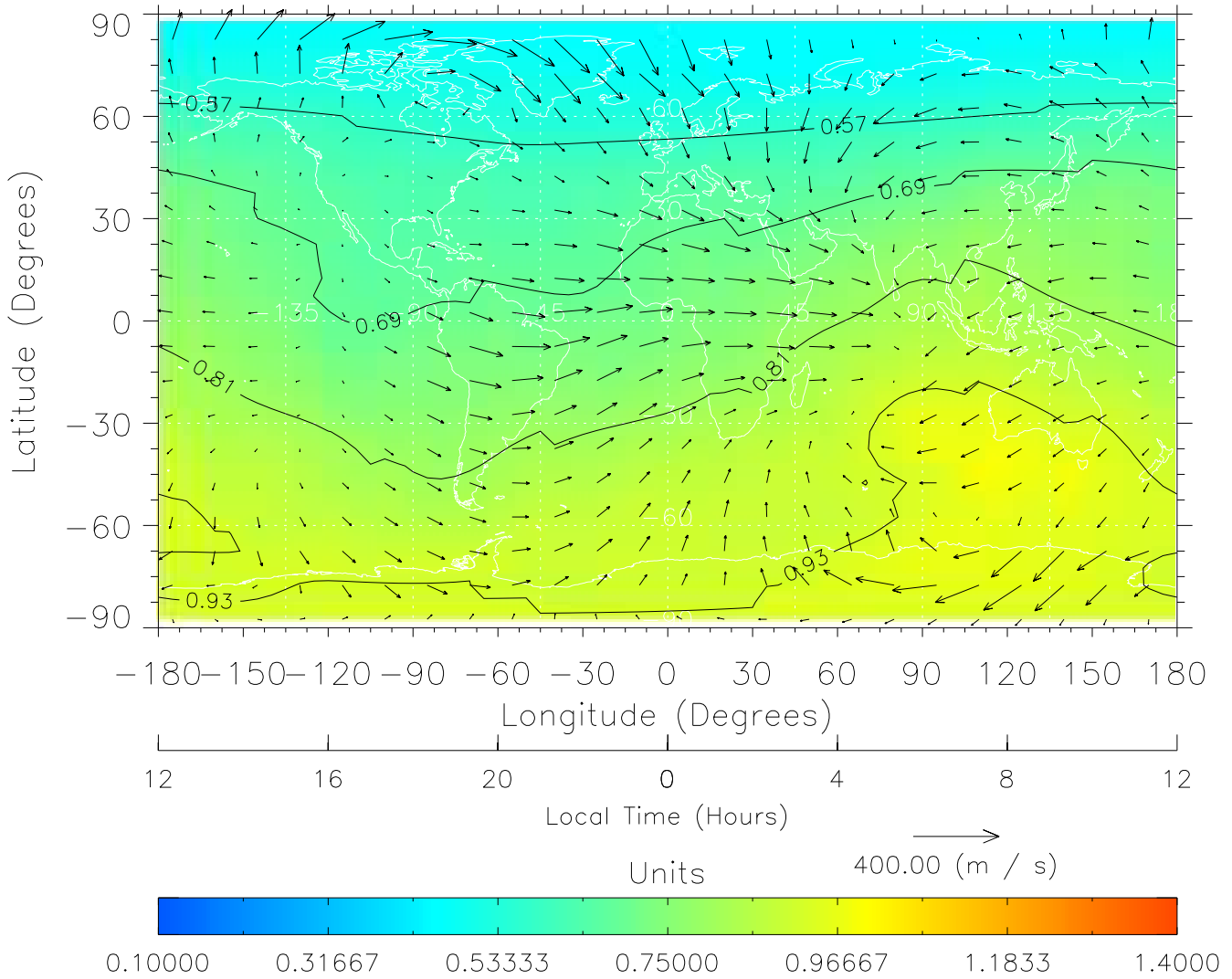


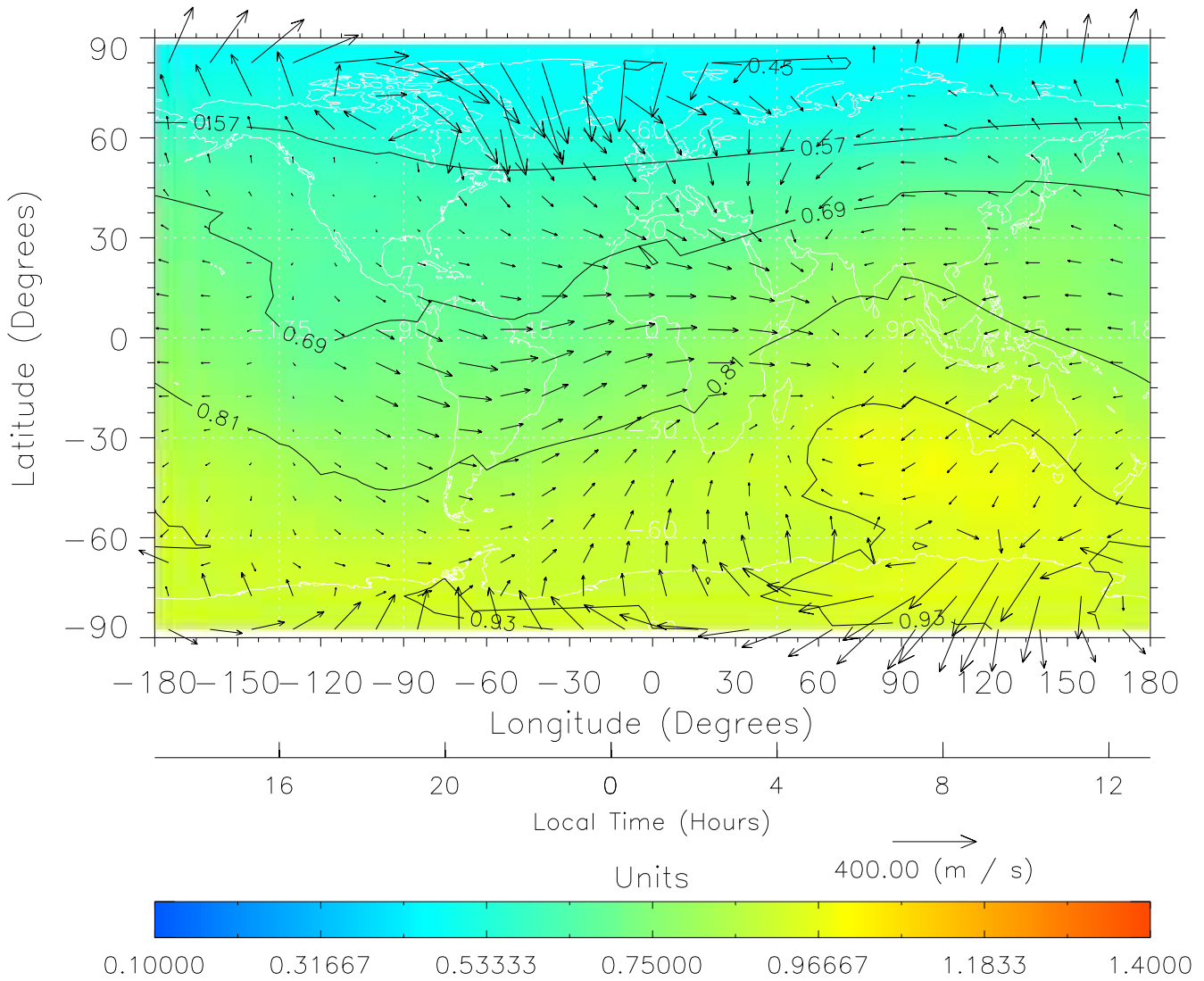
TIME-GCM MAP $\Sigma O/N_2$ with Neutral Wind vectors
ZP = 2.00 UT = 0.00 DOY = 107



Created: Thu Mar 10 15:04:26 2005

From: /tgcm/histories/secondary/April2002/April2002_ASPENV1.6_v1/17_00.nc

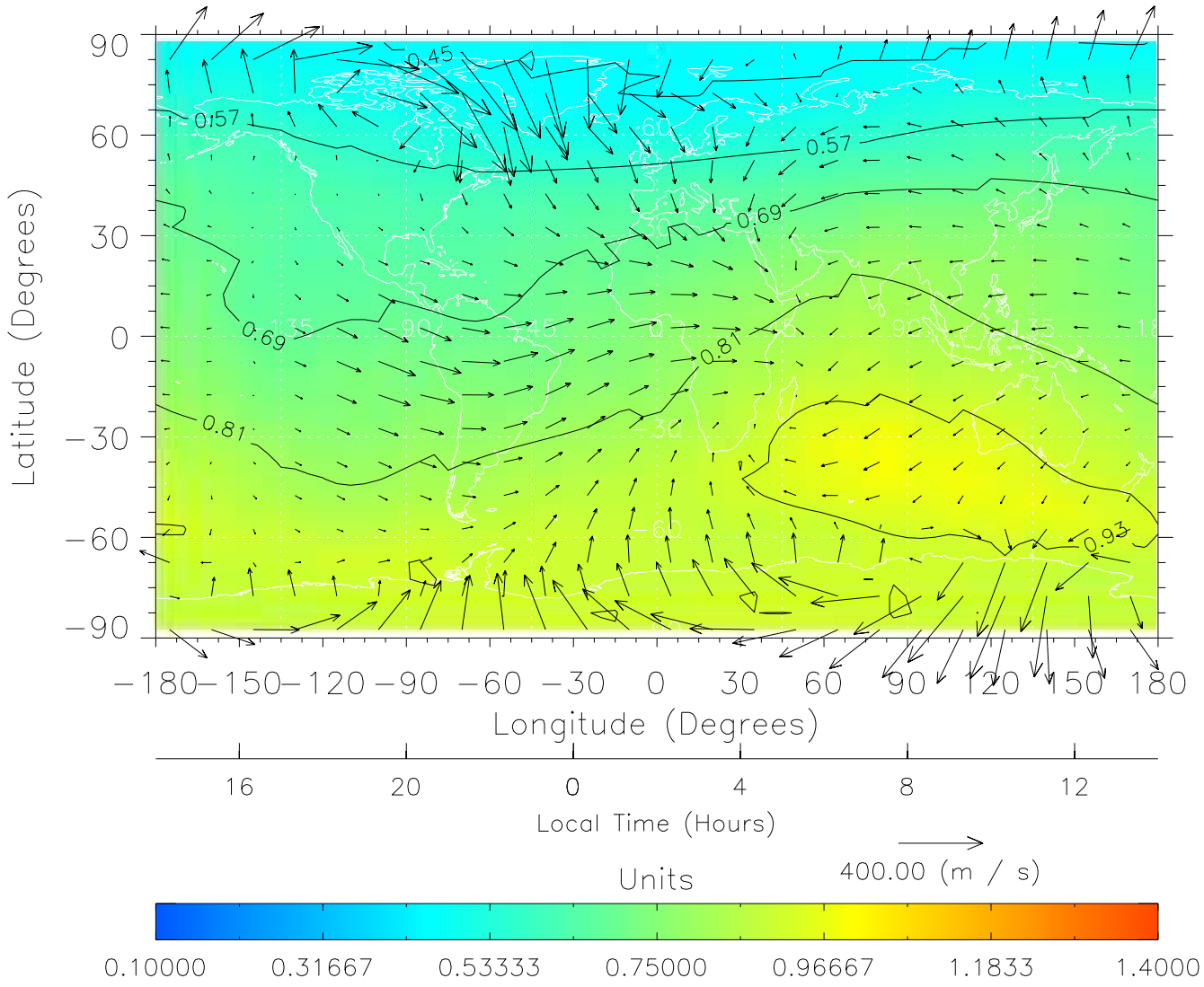
TIME-GCM MAP $\Sigma O/N_2$ with Neutral Wind vectors
ZP = 2.00 UT = 1.00 DOY = 107



Created: Thu Mar 10 15:04:26 2005

From: /tgcm/histories/secondary/April2002/April2002_ASPENV1.6_v1/17_00.nc

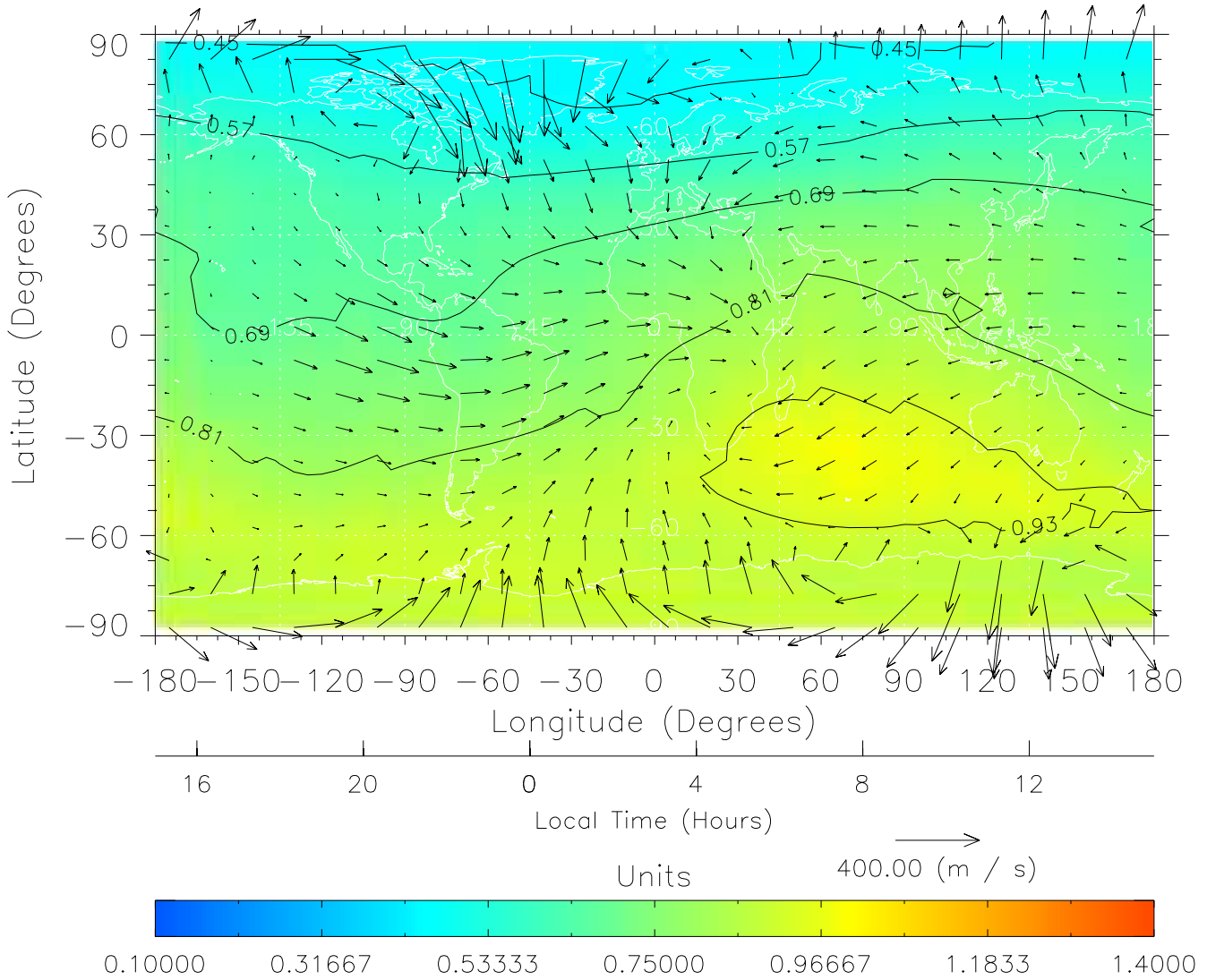
TIME-GCM MAP $\Sigma O/N_2$ with Neutral Wind vectors
ZP = 2.00 UT = 2.00 DOY = 107



Created: Thu Mar 10 15:04:27 2005

From: /tgcm/histories/secondary/April2002/April2002_ASPEv1.6_v1/17_00.nc

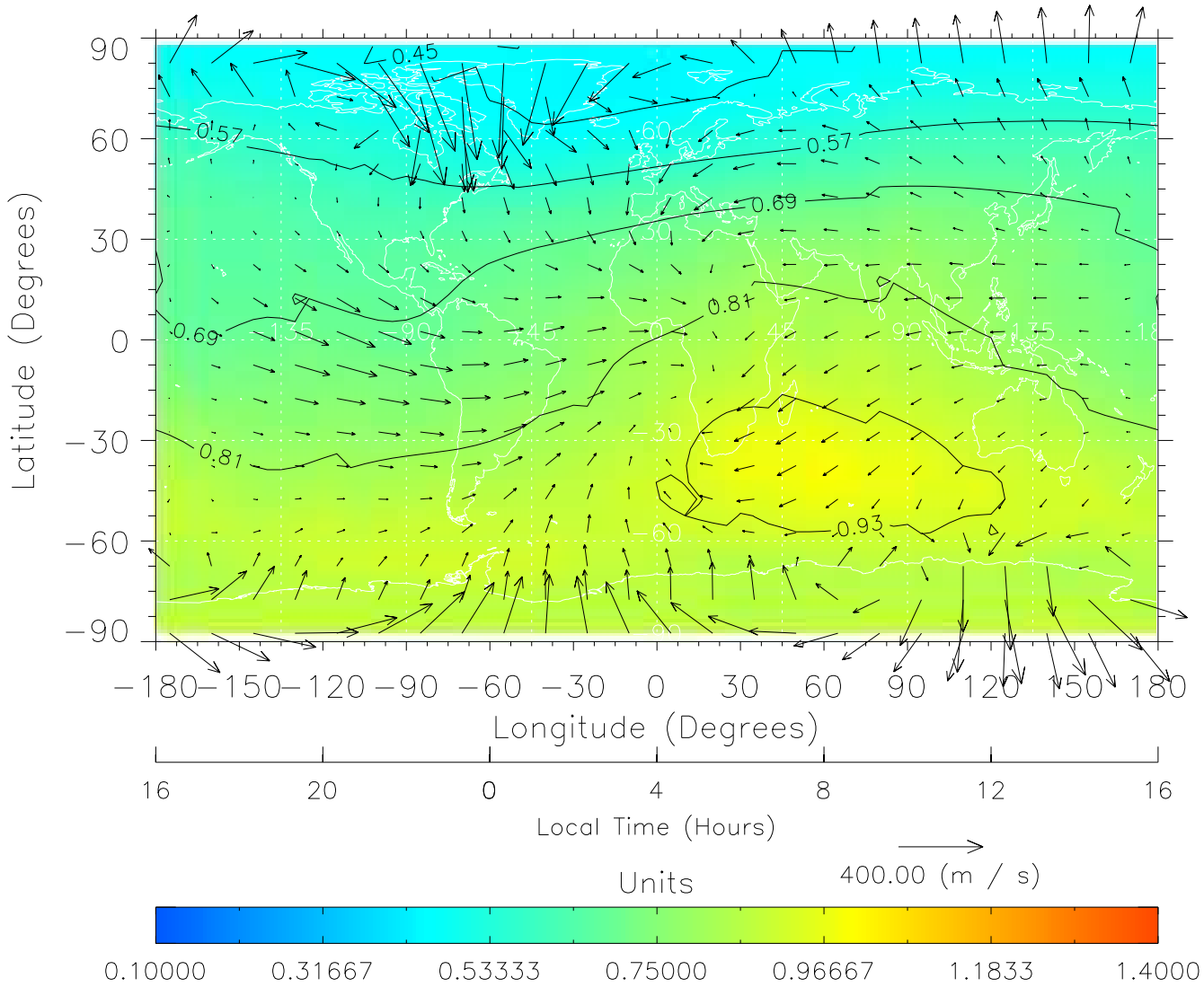
TIME-GCM MAP $\Sigma O/N_2$ with Neutral Wind vectors
ZP = 2.00 UT = 3.00 DOY = 107



Created: Thu Mar 10 15:04:27 2005

From: /tgcm/histories/secondary/April2002/April2002_ASPENV1.6_v1/17_00.nc

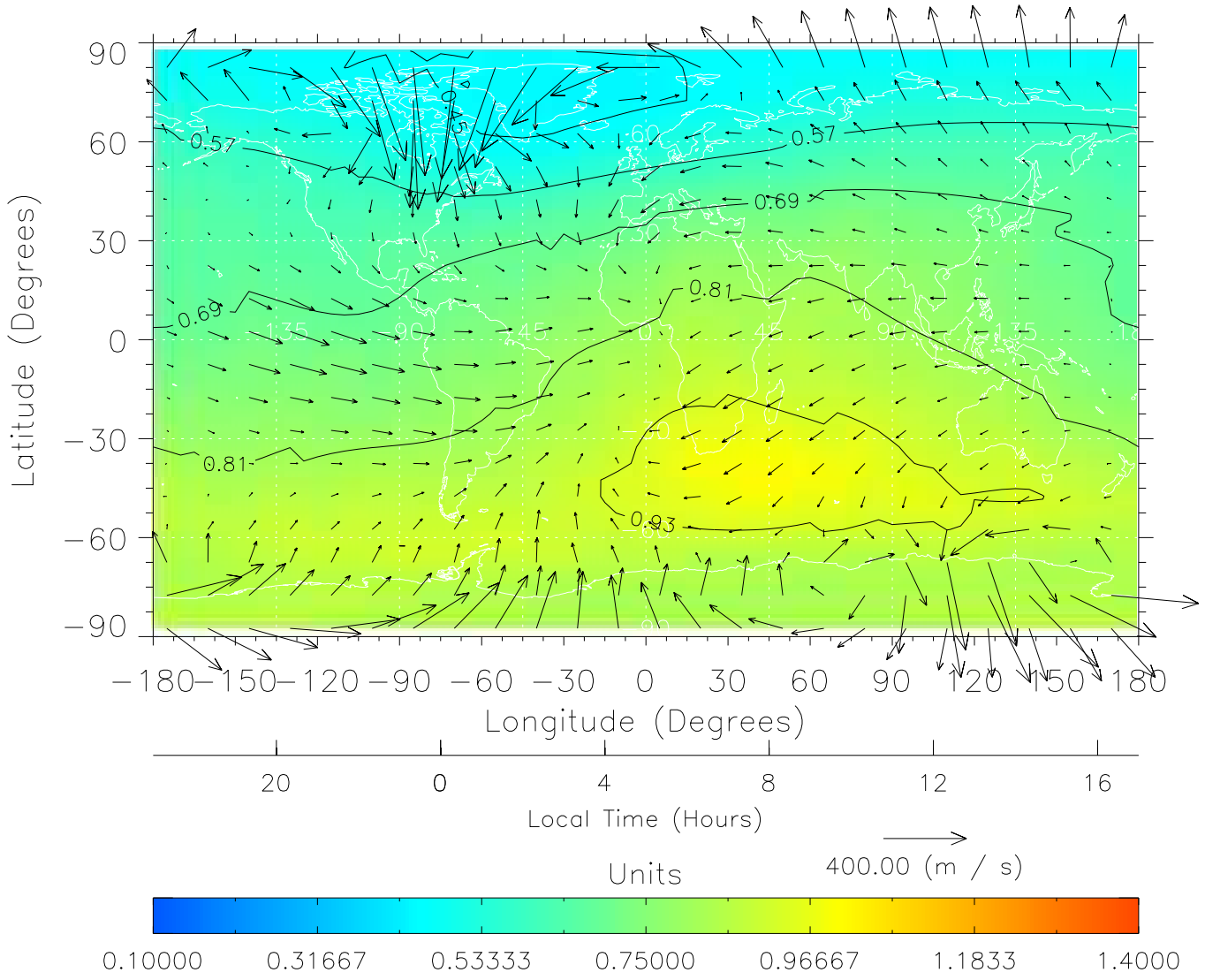
TIME-GCM MAP $\Sigma O/N_2$ with Neutral Wind vectors
ZP = 2.00 UT = 4.00 DOY = 107



Created: Thu Mar 10 15:04:27 2005

From: /tgcm/histories/secondary/April2002/April2002_ASPENV1.6_v1/17_00.nc

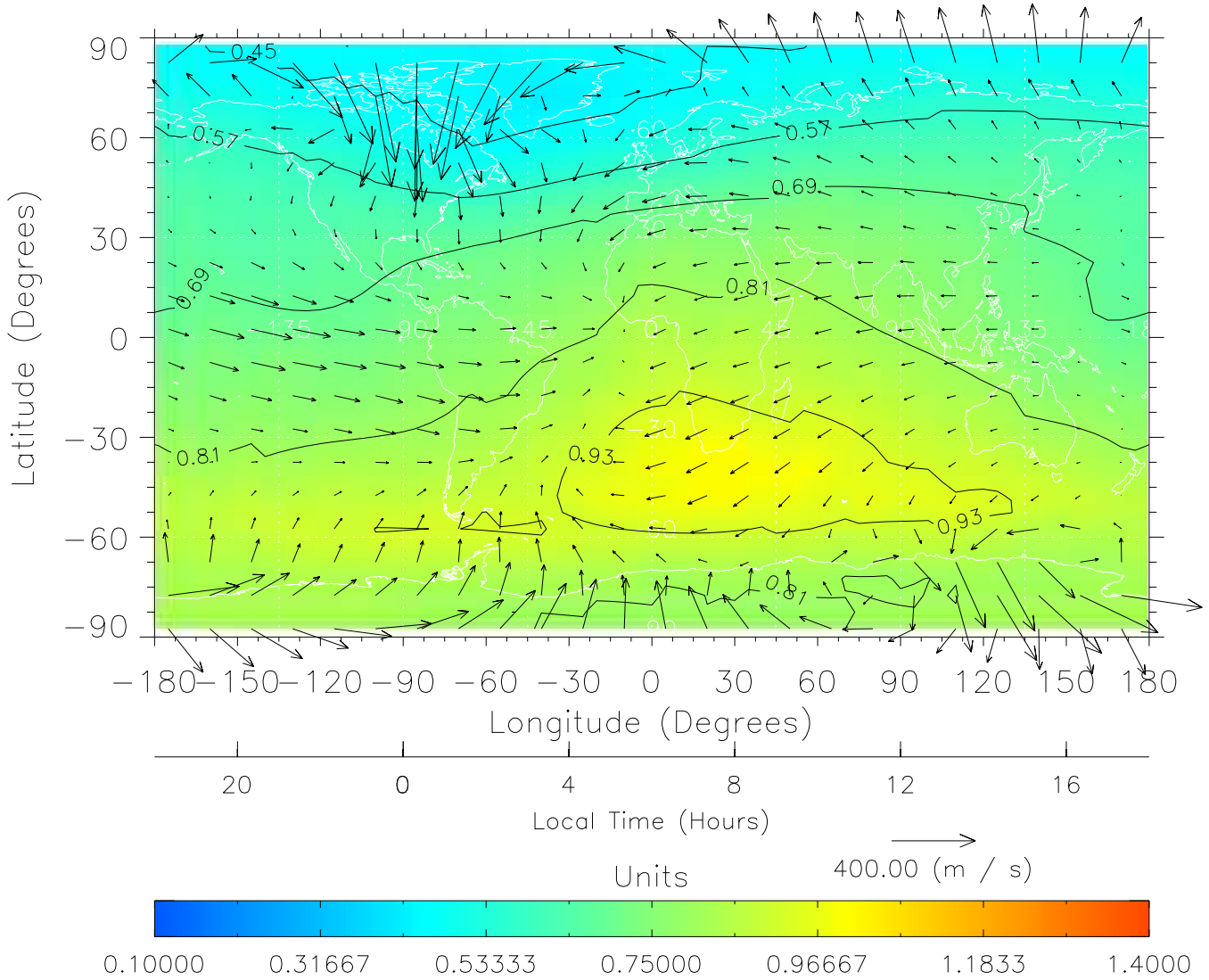
TIME-GCM MAP $\Sigma O/N_2$ with Neutral Wind vectors
ZP = 2.00 UT = 5.00 DOY = 107



Created: Thu Mar 10 15:04:28 2005

From: /tgcm/histories/secondary/April2002/April2002_ASPENV1.6_v1/17_00.nc

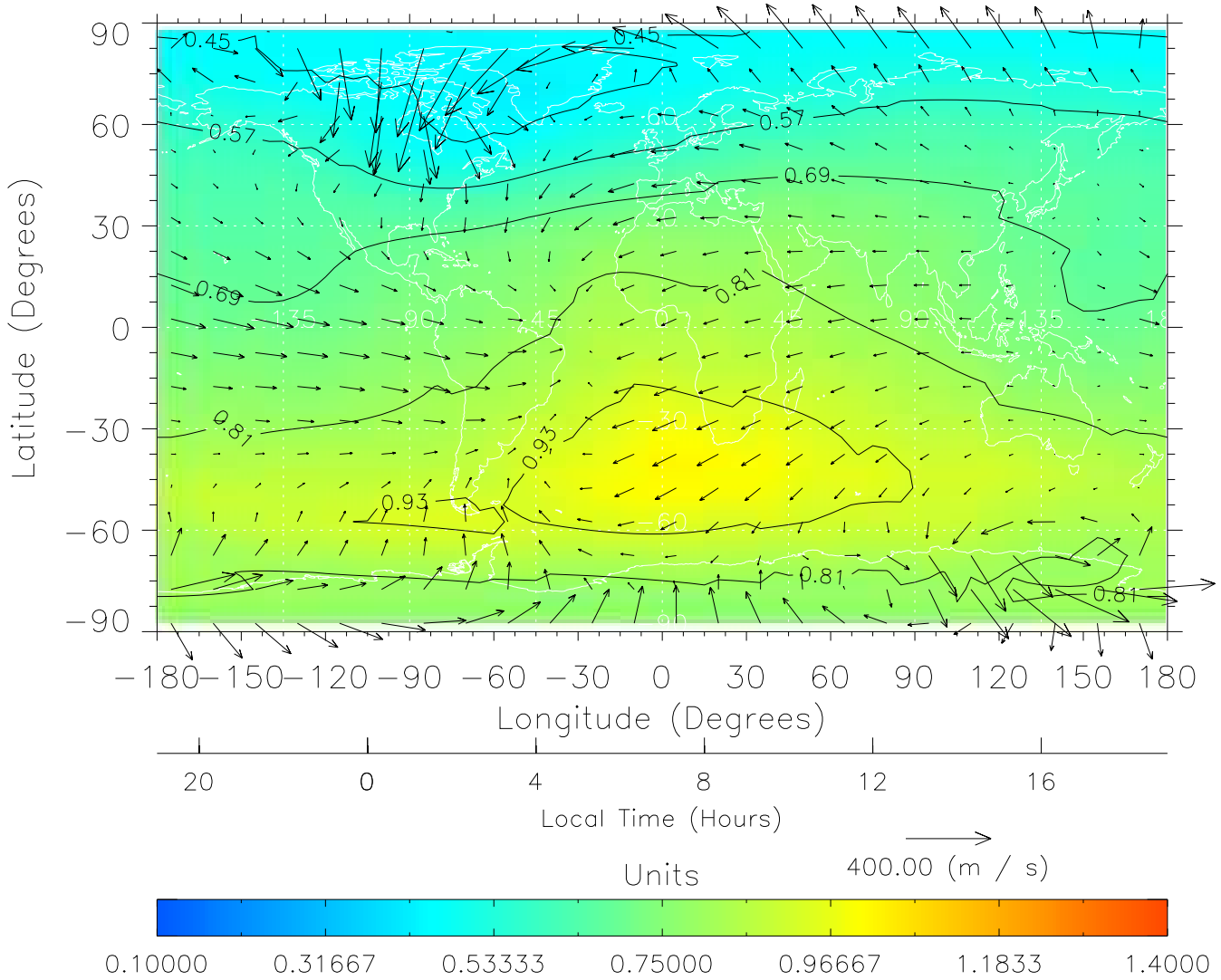
TIME-GCM MAP $\Sigma O/N_2$ with Neutral Wind vectors
ZP = 2.00 UT = 6.00 DOY = 107



Created: Thu Mar 10 15:04:28 2005

From: /tgcm/histories/secondary/April2002/April2002_ASPENV1.6_v1/17_00.nc

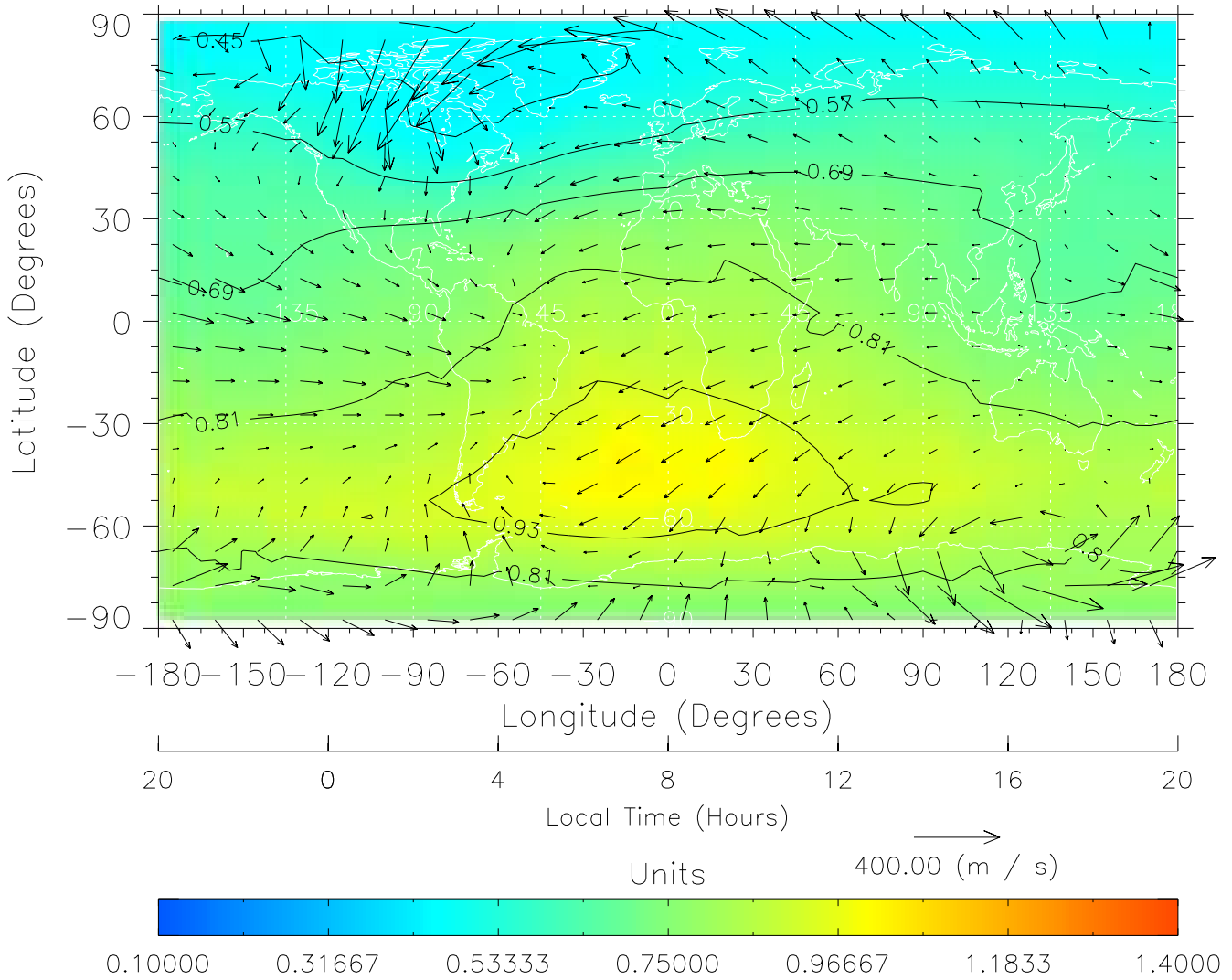
TIME-GCM MAP $\Sigma O/N_2$ with Neutral Wind vectors
ZP = 2.00 UT = 7.00 DOY = 107



Created: Thu Mar 10 15:04:28 2005

From: /tgcm/histories/secondary/April2002/April2002_ASPENV1.6_v1/17_00.nc

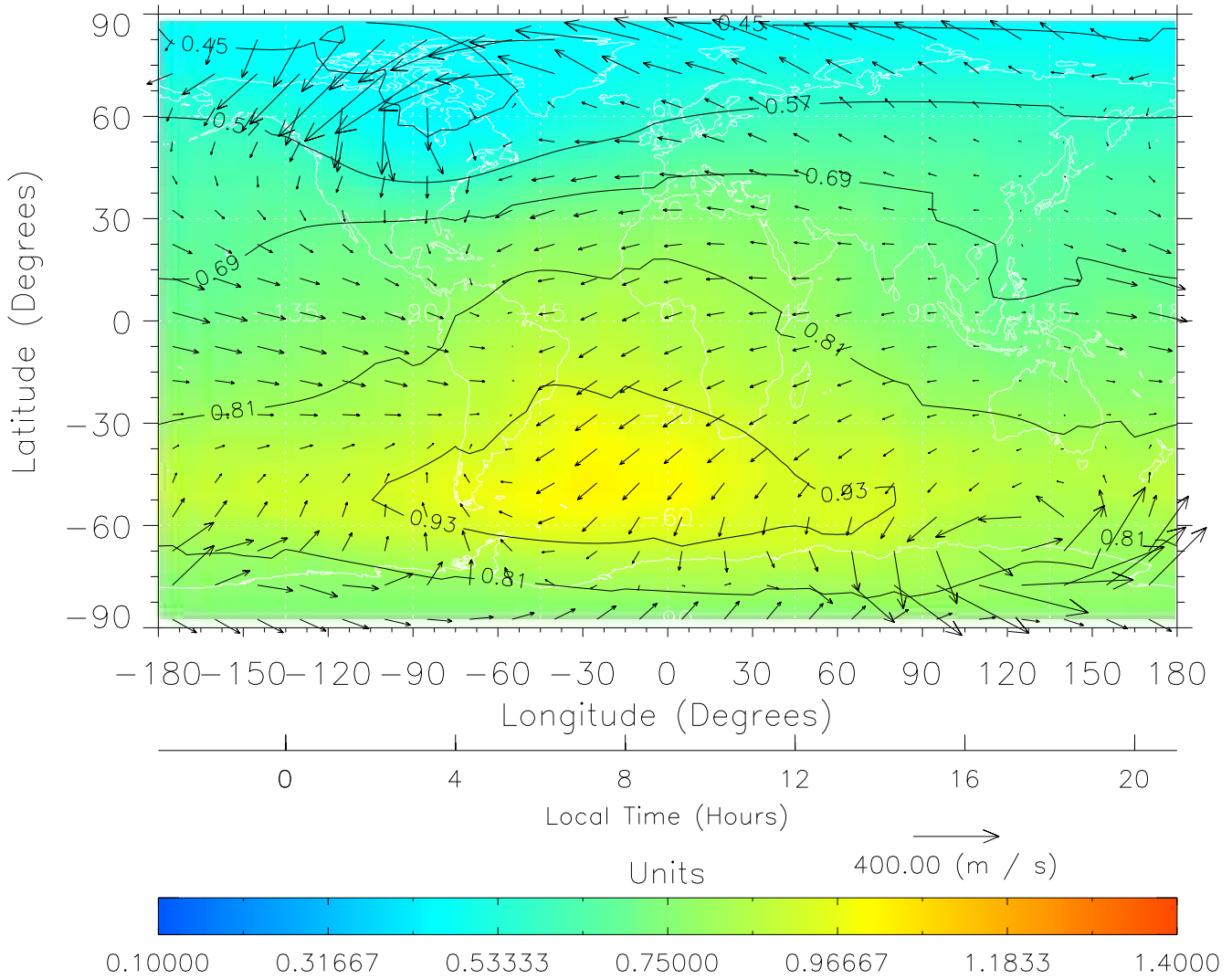
TIME-GCM MAP $\Sigma O/N_2$ with Neutral Wind vectors
ZP = 2.00 UT = 8.00 DOY = 107



Created: Thu Mar 10 15:04:29 2005

From: /tgcm/histories/secondary/April2002/April2002_ASPENV1.6_v1/17_00.nc

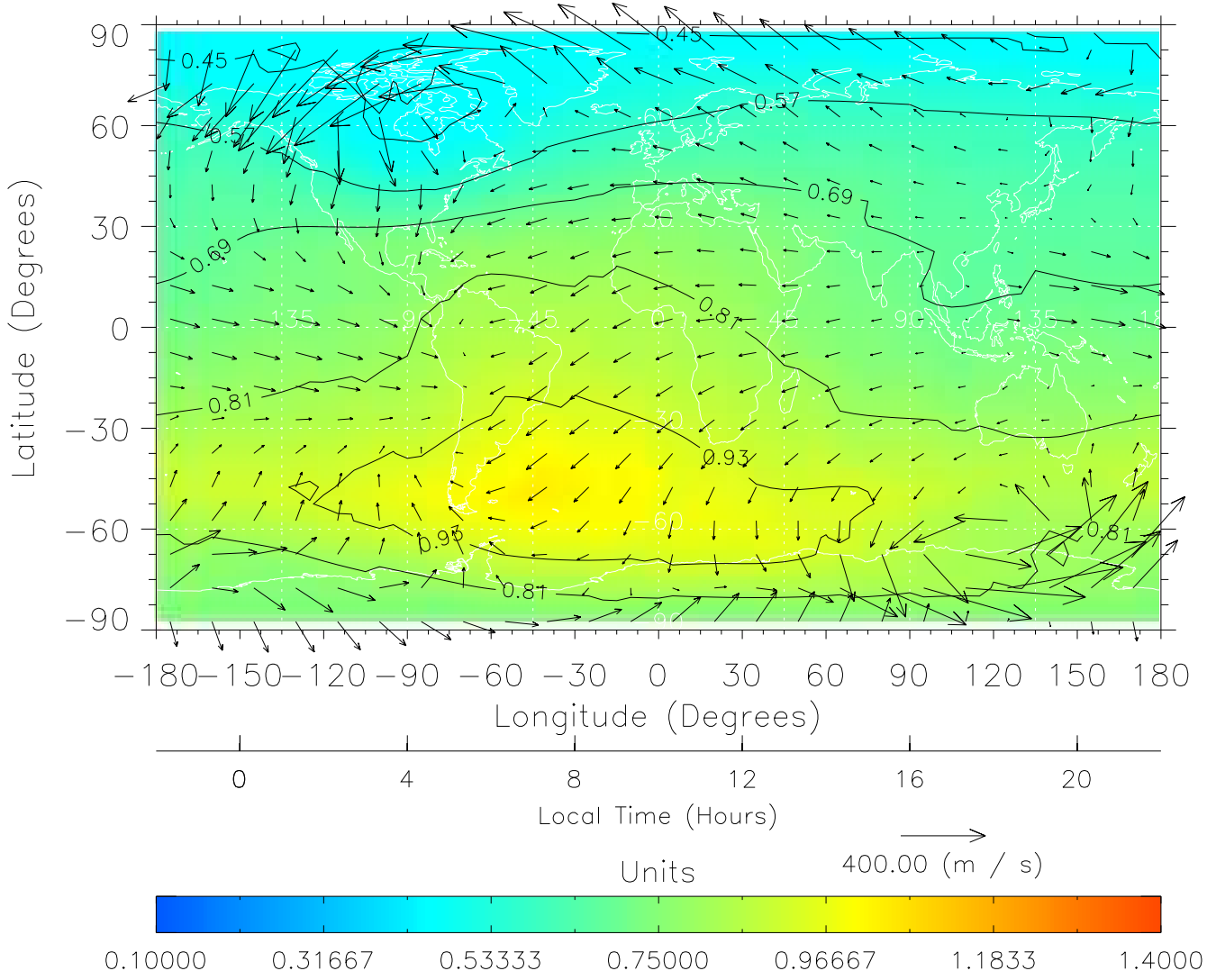
TIME-GCM MAP $\Sigma O/N_2$ with Neutral Wind vectors
ZP = 2.00 UT = 9.00 DOY = 107



Created: Thu Mar 10 15:04:29 2005

From: /tgcm/histories/secondary/April2002/April2002_ASPENV1.6_v1/17_00.nc

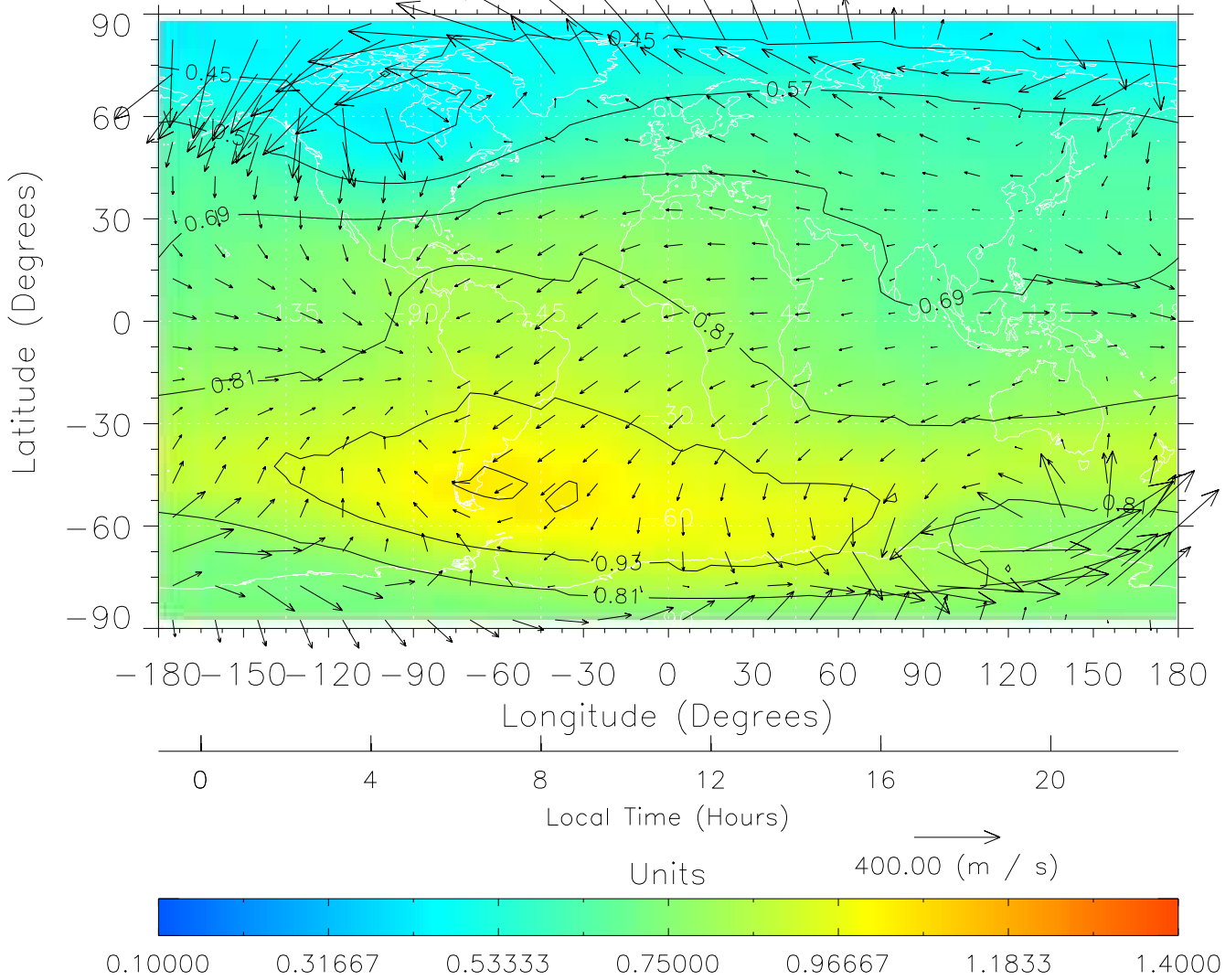
TIME-GCM MAP $\Sigma O/N_2$ with Neutral Wind vectors
ZP = 2.00 UT = 10.00 DOY = 107



Created: Thu Mar 10 15:04:29 2005

From: /tgcm/histories/secondary/April2002/April2002_ASPENV1.6_v1/17_00.nc

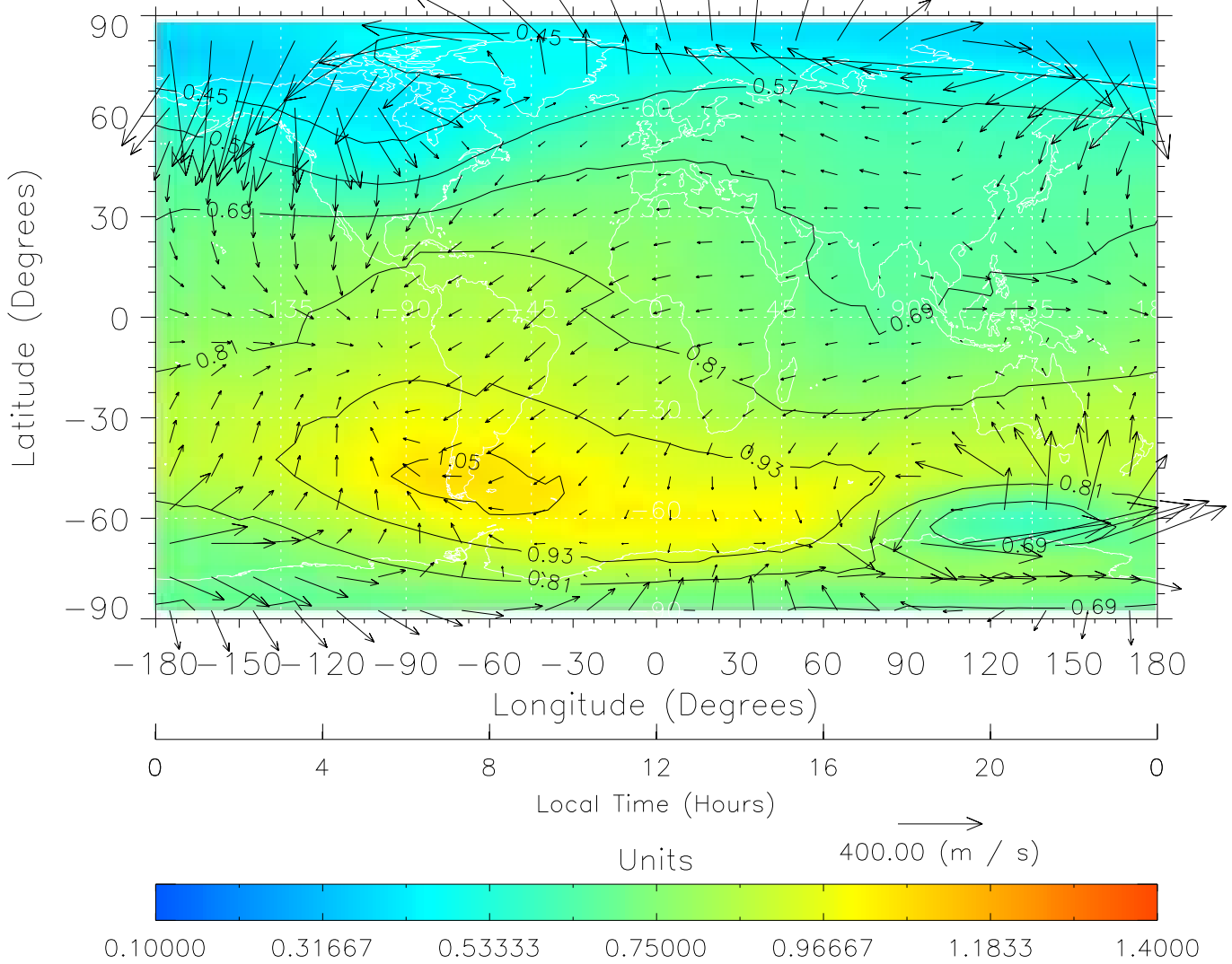
TIME-GCM MAP $\Sigma O/N_2$ with Neutral Wind vectors
ZP = 2.00 UT = 11.00 DOY = 107



Created: Thu Mar 10 15:04:30 2005

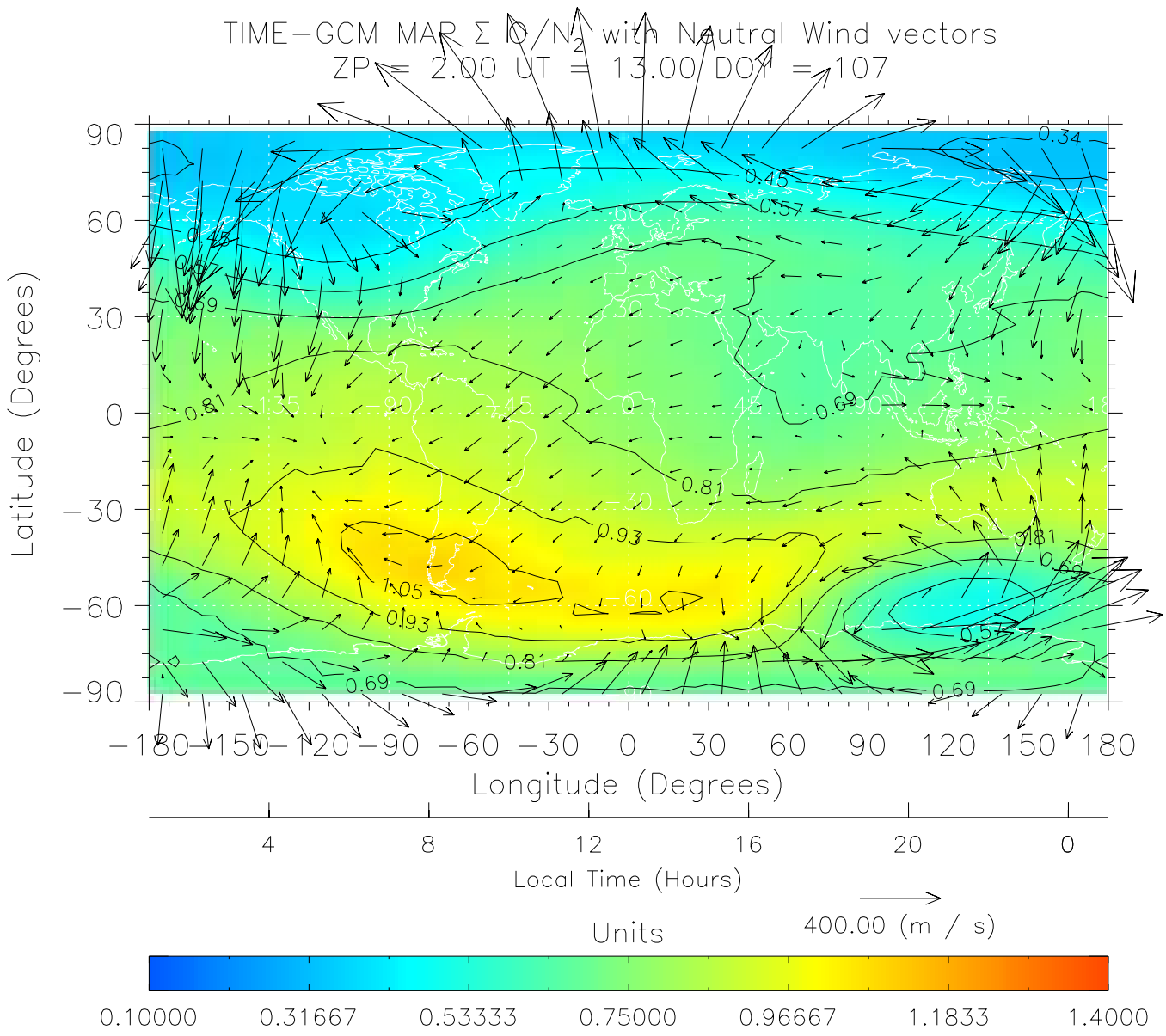
From: /tgcm/histories/secondary/April2002/April2002_ASPEv1.6_v1/17_00.nc

TIME-GCM MAP $\Sigma O/N_2$ with Neutral Wind vectors
ZP = 2.00 UT = 12.00 DOY = 107



Created: Thu Mar 10 15:04:30 2005

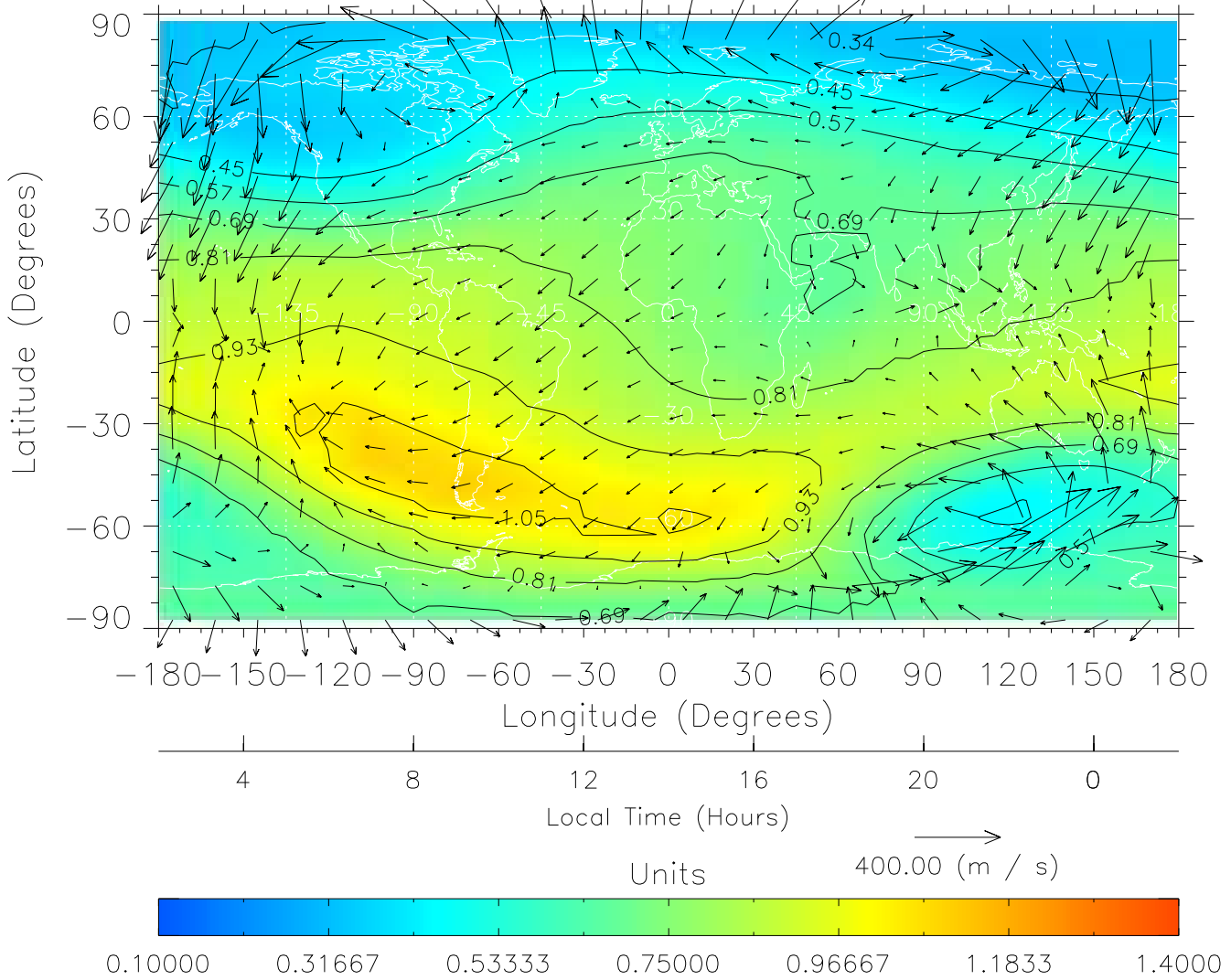
From: /tgcm/histories/secondary/April2002/April2002_ASPENV1.6_v1/17_12.nc



Created: Thu Mar 10 15:04:30 2005

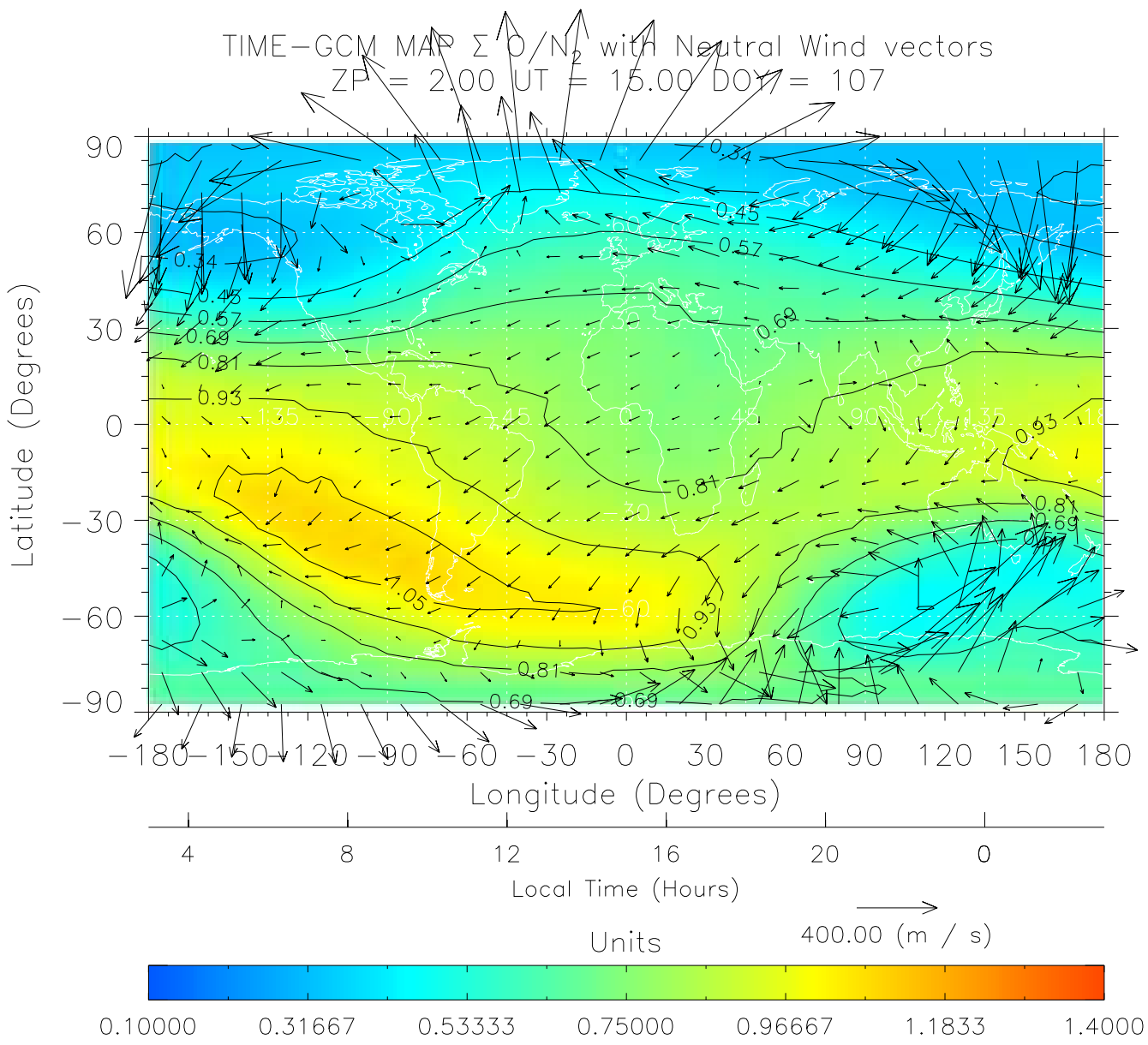
From: /tgcm/histories/secondary/April2002/April2002_ASPENV1.6_v1/17_12.nc

TIME-GCM MAP $\Sigma O/N_2$ with Neutral Wind vectors
ZP = 2.00 UT = 14.00 DOY = 107



Created: Thu Mar 10 15:04:31 2005

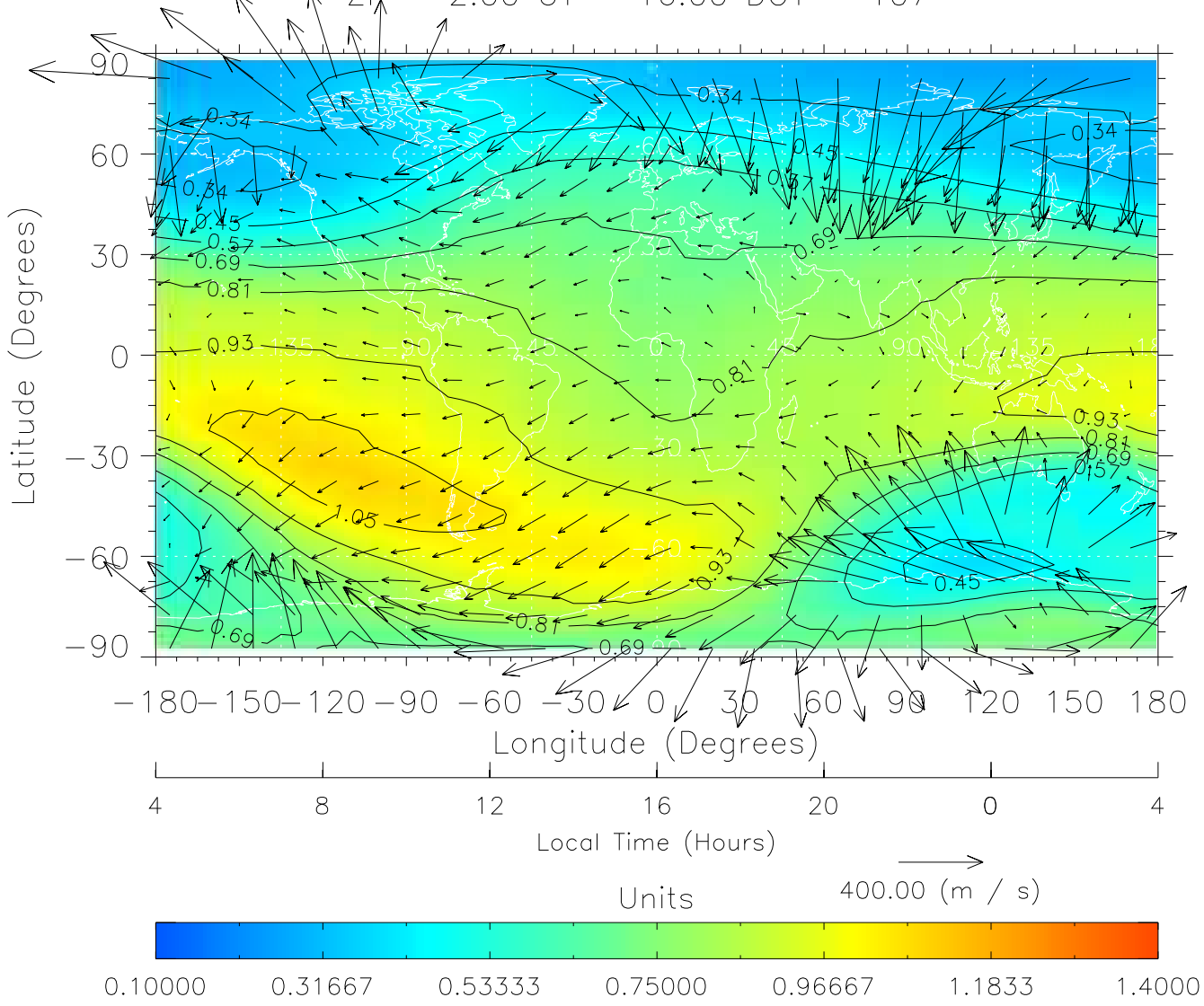
From: /tgcm/histories/secondary/April2002/April2002_ASPENV1.6_v1/17_12.nc



Created: Thu Mar 10 15:04:31 2005

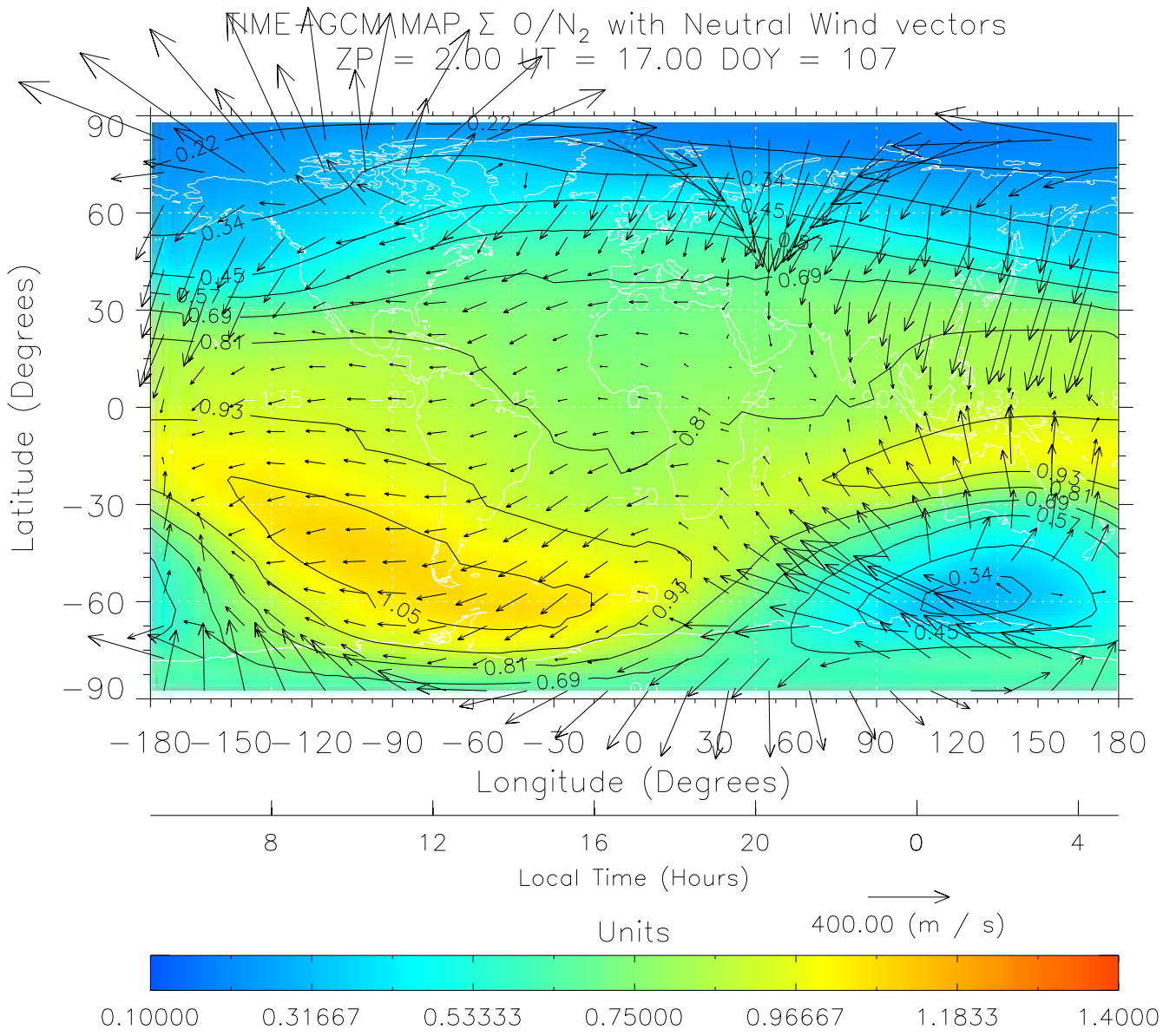
From: /tgcm/histories/secondary/April2002/April2002_ASPENV1.6_v1/17_12.nc

TIME-GCM MAP $\Sigma O/N_2$ with Neutral Wind vectors
ZP = 2.00 UT = 16.00 DOY = 107



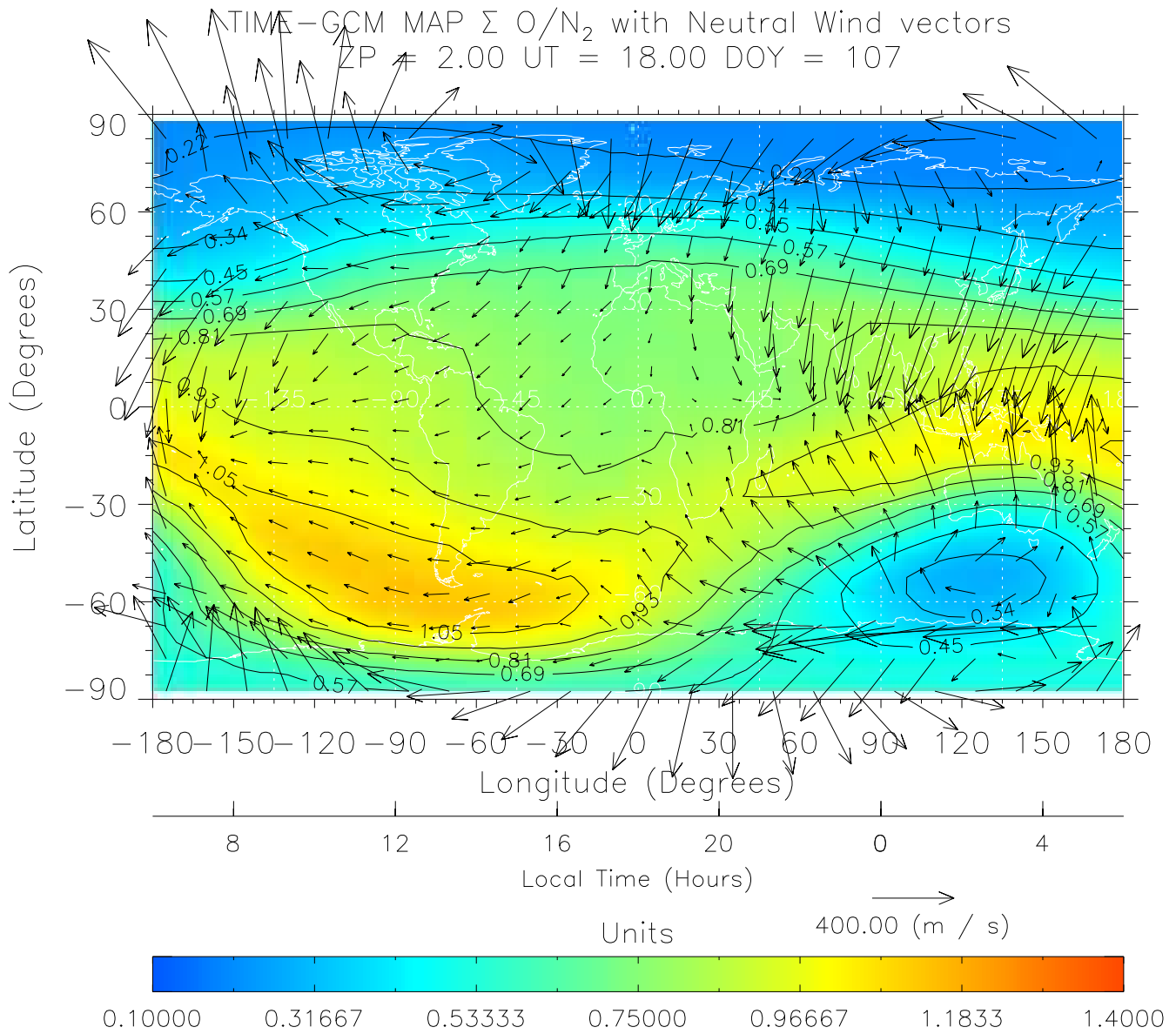
Created: Thu Mar 10 15:04:31 2005

From: /tgcm/histories/secondary/April2002/April2002_ASPENV1.6_v1/17_12.nc



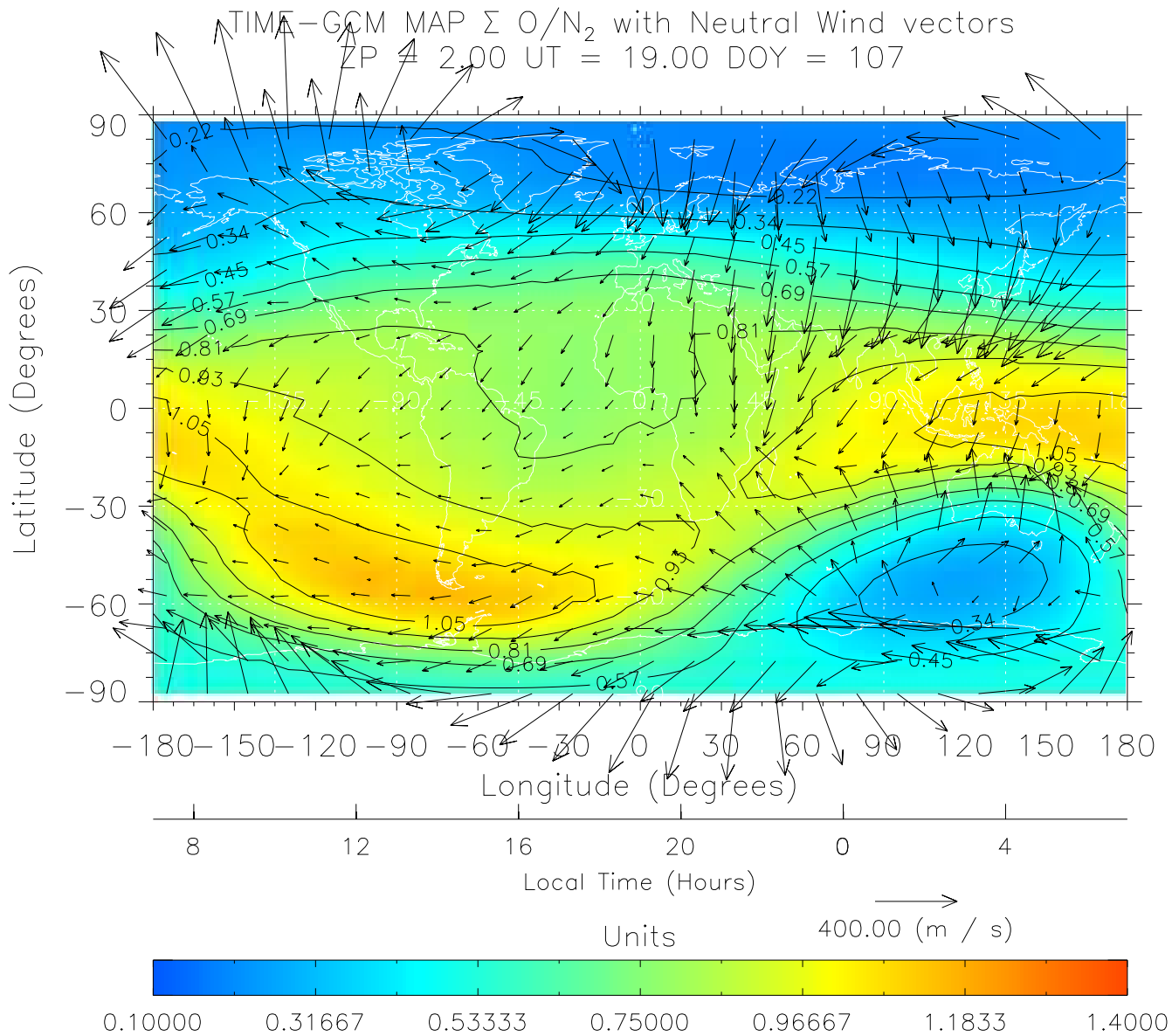
Created: Thu Mar 10 15:04:32 2005

From: /tgcm/histories/secondary/April2002/April2002_ASPENV1.6_v1/17_12.nc



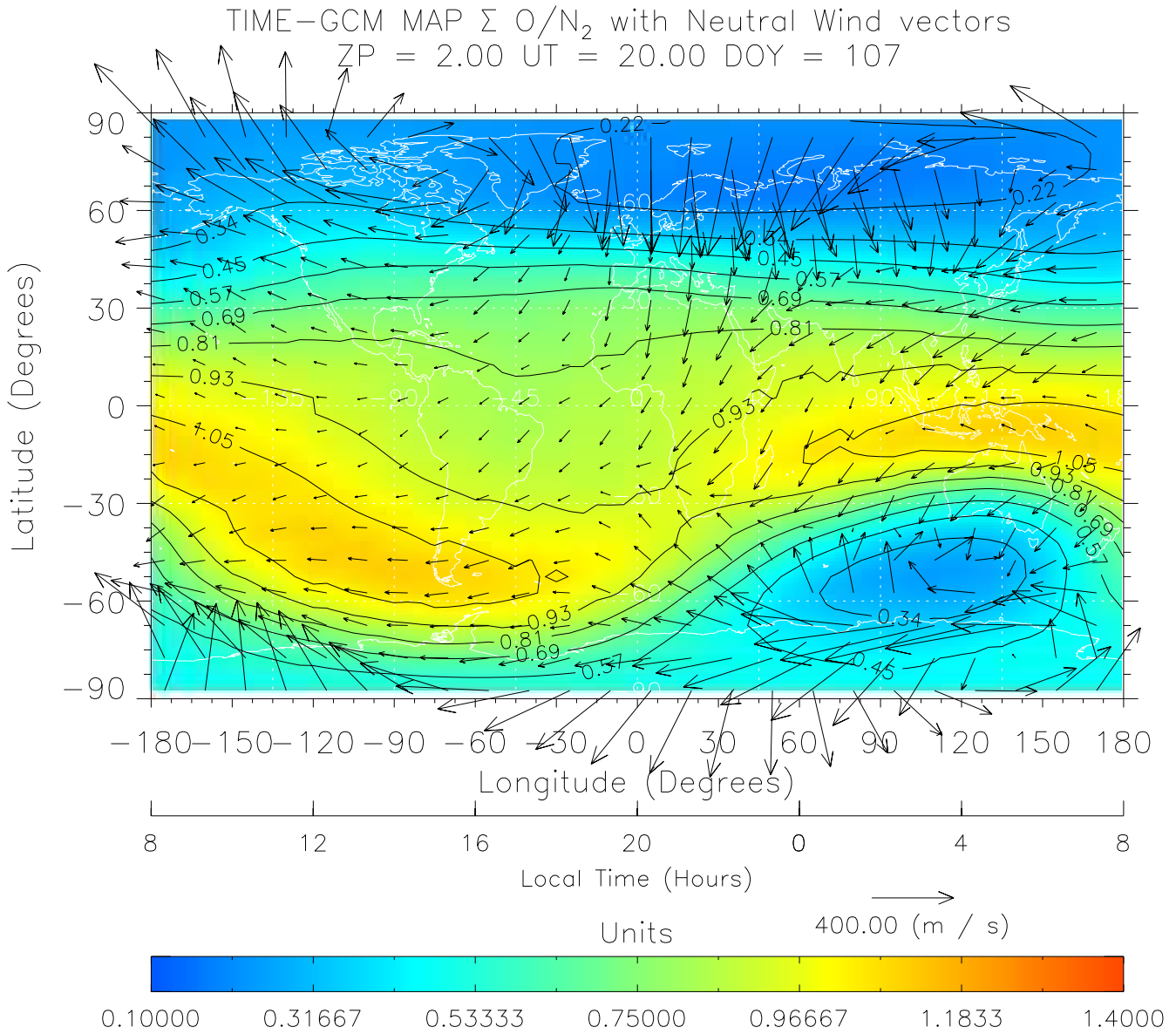
Created: Thu Mar 10 15:04:32 2005

From: /tgcm/histories/secondary/April2002/April2002_ASPENV1.6_v1/17_12.nc



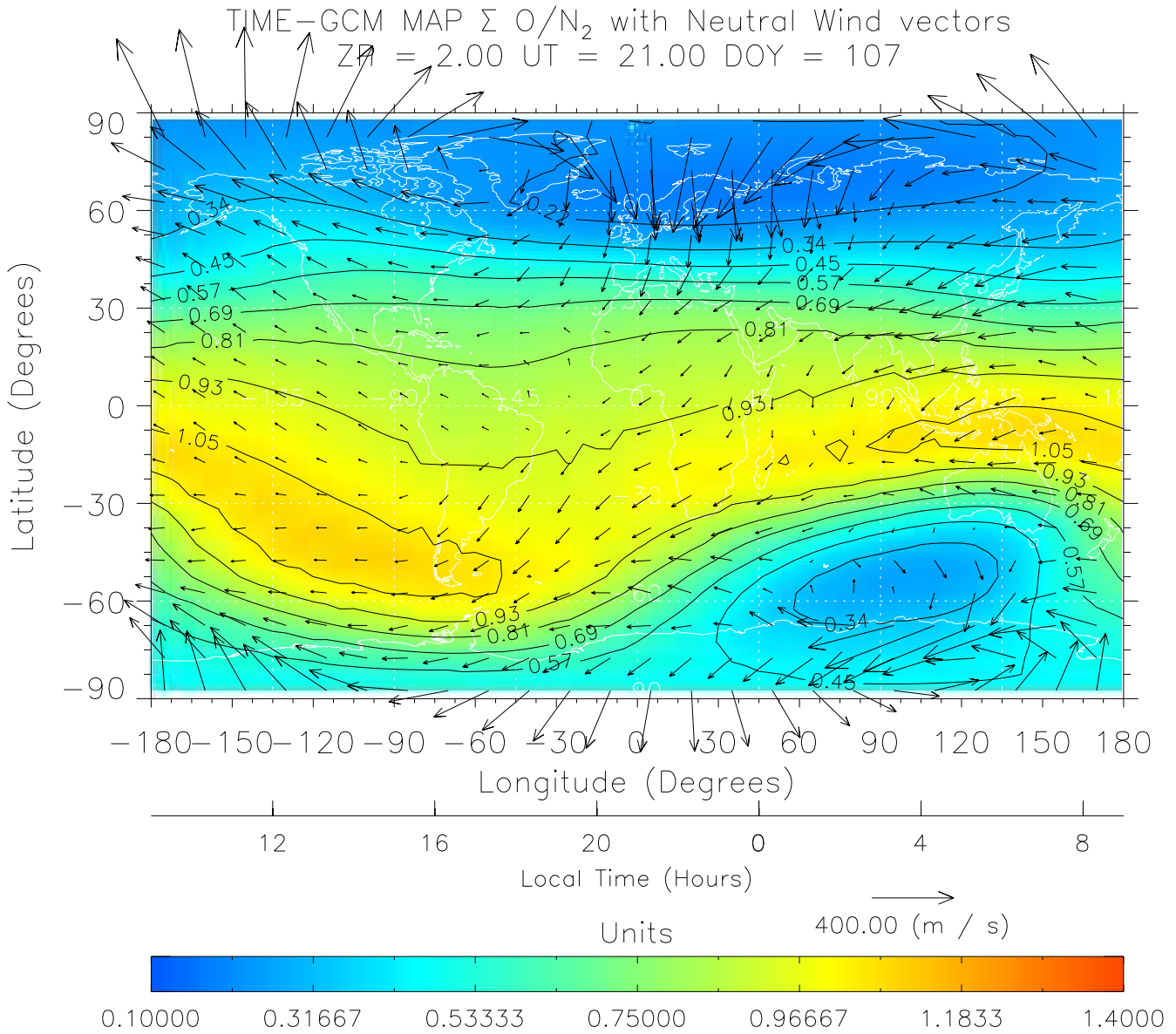
Created: Thu Mar 10 15:04:32 2005

From: /tgcm/histories/secondary/April2002/April2002_ASPENV1.6_v1/17_12.nc



Created: Thu Mar 10 15:04:33 2005

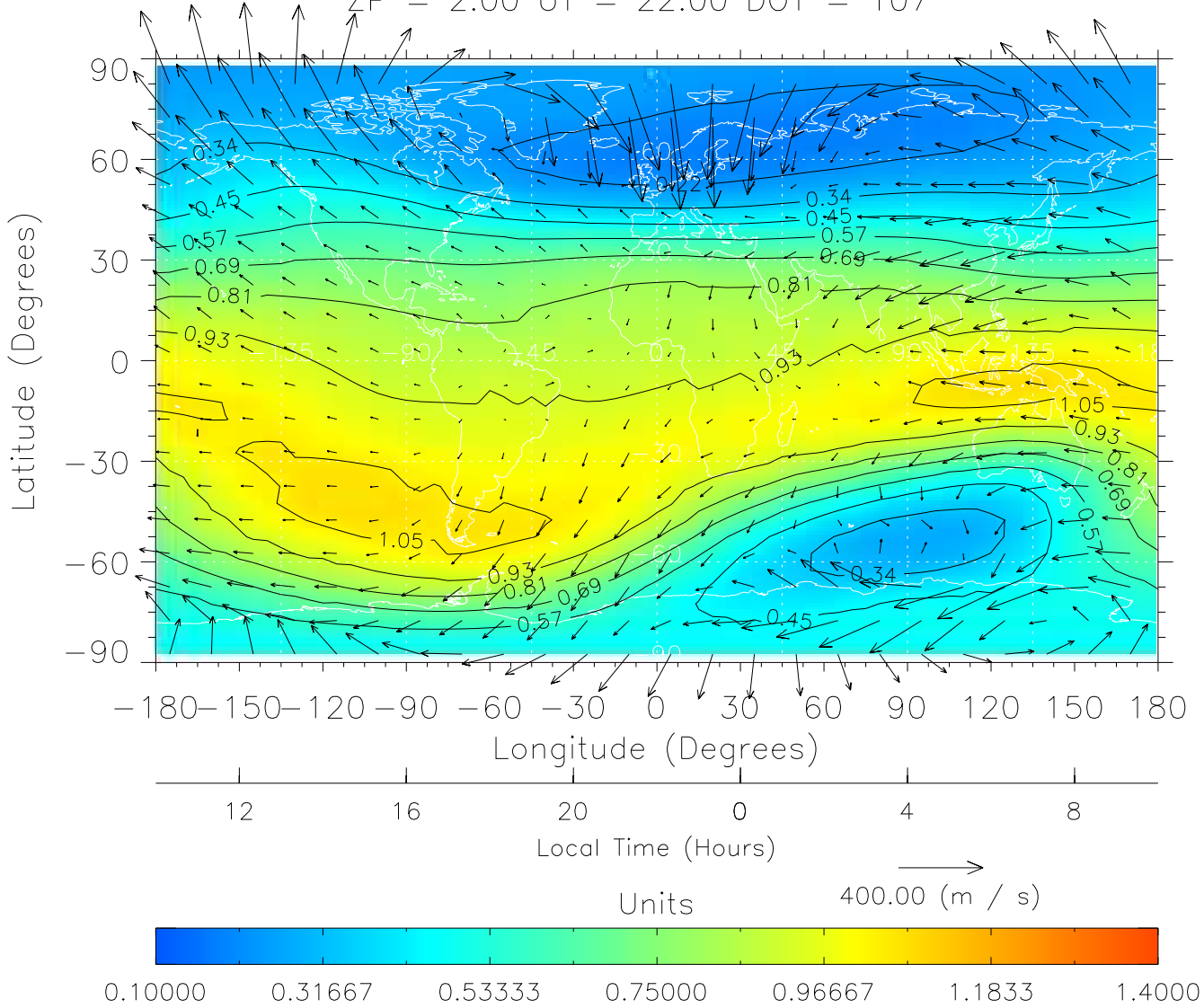
From: /tgcm/histories/secondary/April2002/April2002_ASPENV1.6_v1/17_12.nc



Created: Thu Mar 10 15:04:33 2005

From: /tgcm/histories/secondary/April2002/April2002_ASPENV1.6_v1/17_12.nc

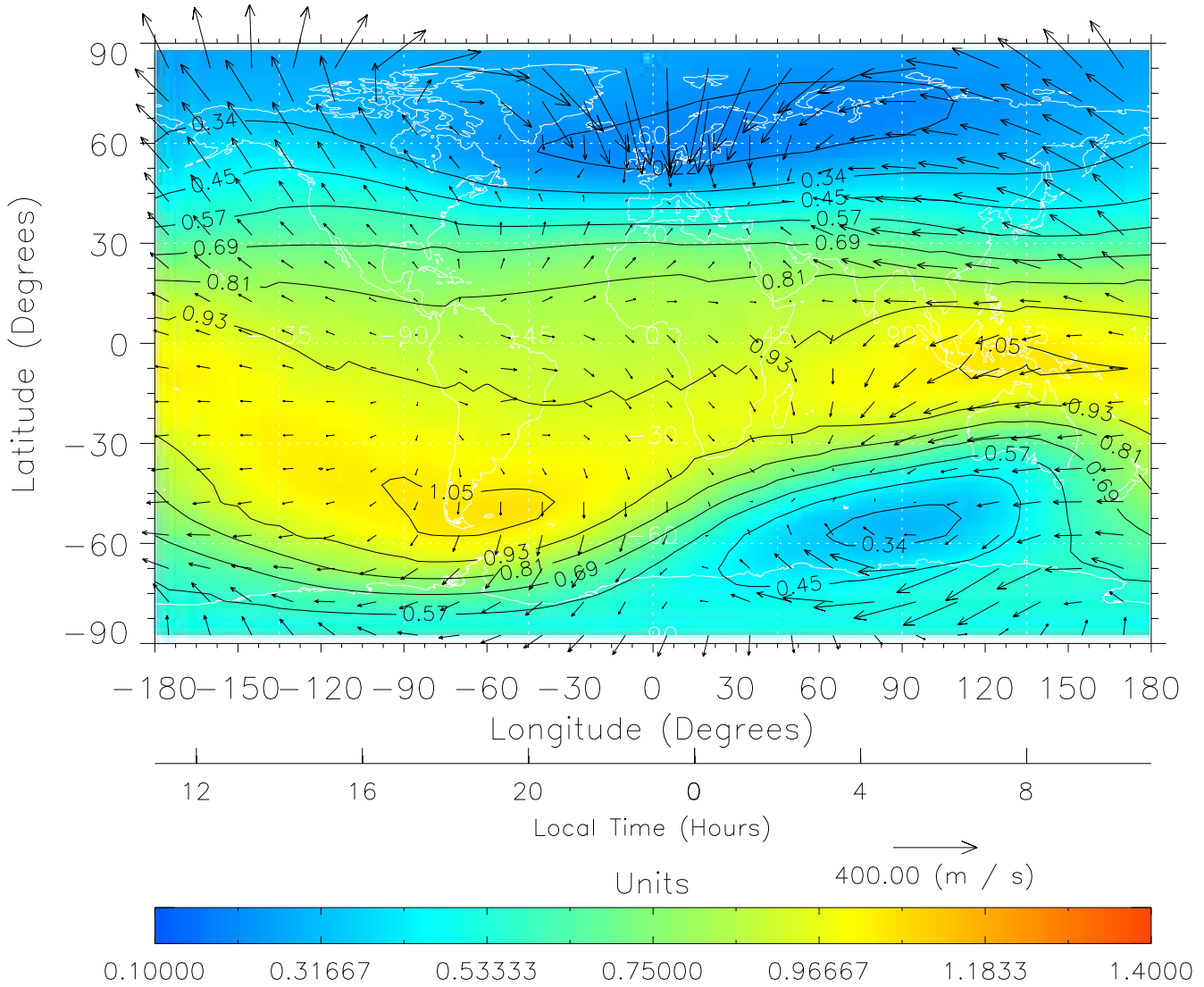
TIME-GCM MAP $\Sigma O/N_2$ with Neutral Wind vectors
ZP = 2.00 UT = 22.00 DOY = 107



Created: Thu Mar 10 15:04:33 2005

From: /tgcm/histories/secondary/April2002/April2002_ASPENV1.6_v1/17_12.nc

TIME-GCM MAP $\Sigma O/N_2$ with Neutral Wind vectors
ZP = 2.00 UT = 23.00 DOY = 107



Created: Thu Mar 10 15:04:34 2005

From: /tgcm/histories/secondary/April2002/April2002_ASPENV1.6_v1/17_12.nc